

GENERAL

The RP970A is a direct acting, proportional relay suitable for use in HVAC systems to increase the capacity of a branchline signal to a pneumatic valve or damper operator. The RP970A provides a 1:1 pressure ratio.

FEATURES

- In-line, wall, or panel mounted
- Sharp barb air connections
- Molded plastic construction

RP970A Capacity Relay

DESCRIPTION

The RP970A is a direct acting, proportional relay suitable for use in HVAC systems to increase the capacity of a branchline signal to a pneumatic valve or damper operator. The RP970A provides a 1:1 pressure ratio.

SPECIFICATIONS

Model:
RP970A

Operating Range:
0 to 18 psi (0 to 124 kPa)

Maximum Safe Air Pressure:
30 psi (205 kPa)

Ambient Operating Limits:
Temperature: 0 to 140F (-18 to 60C)
Humidity: 5 to 95%

Operating Air Pressures:
Pilot: 3 to 15 psi (21 to 103 kPa)
Main: 18 psi (124 kPa)

Air Handling Capacity:
0.039 scfm at 1 psi differential (18 ml/s at 5 kPa differential)

Air Consumption:
0.0017 scfm (0.8 ml/s)

Mounting:
In-line, wall, or panel mounted

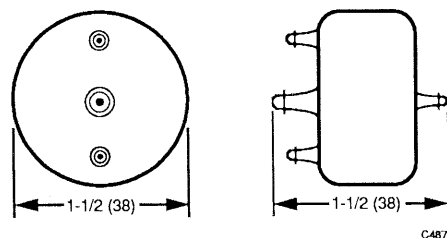
Port Identification:
Port 1: Main
Port 2: Branch
Port 3: Pilot
Port 4: Exhaust

Air Connection:
Sharp barb type for 1/4-in. (6-mm) O.D. plastic tubing for Port 1 and 5/32-in. (4-mm) O.D. plastic tubing for Ports 2, 3, and 4

Construction:
Molded plastic with neoprene diaphragm, brass valve seats, and 100-mesh stainless steel filters in main and branch ports

Accessories:
14003030-001 Mounting Clip (1-1/2 in.)
801629S Cable Clamp (1-1/2 in.)

Dimensions In Inches (Millimeters):



Honeywell

In the USA: Honeywell Plaza, Minneapolis, Minnesota 55408
In Canada: Scarborough, Ontario M1P 2V9
Subsidiaries and Affiliates Around the World

77-9850
Commercial Bldg Group
MLF TAB: II. C. 5.

Printed in USA

Rev. 6-90