

REPAIR PARTS

WMH Series Remote Heat Pumps

WMH12-1
WMH12-2
WMH18-1
WMH18-2
WMH24-1
WMH24-2



Goodman Manufacturing Company, L.P.
5151 San Felipe, Suite 500
Houston, TX 77056

www.goodmanmfg.com



RP-206
May 2008

Important Information

Index

Functional Parts List	3
Illustration and Parts	4 - 7

Views shown are for parts illustrations only, not servicing procedures.

Text Codes:

AR - As Required

NA - Not Available

NS - Not Shown

00000000 - See Note

QTY - Quantity Example (QTY 3) (If Quantity not shown, Quantity = 1)

M - Model Example (M1) (If M Code not shown, then part is used on all Models)

Expanded Model Nomenclature:

Example M1 - Model#1 M2 - Model#2 M3 - Model#3

Goodman Manufacturing Company, L.P. is not responsible for personal injury or property damage resulting from improper service. Review all service information before beginning repairs.

Warranty service must be performed by an authorized technician, using authorized factory parts. If service is required after the warranty expires, Goodman Manufacturing Company, L.P. also recommends contacting an authorized technician and using authorized factory parts.

Goodman Manufacturing Company, L.P. reserves the right to discontinue, or change at any time, specifications or designs without notice or without incurring obligations.

For assistance within the U.S.A. contact:
Consumer Affairs Department
Goodman Manufacturing Company, L.P.
7401 Security Way
Houston, Texas 77040
877-254-4729-Telephone
713-863-2382-Facsimile

For assistance outside the U.S.A. contact:
International Division
Goodman Manufacturing Company, L.P.
7401 Security Way
Houston, Texas 77040
713-861-2500-Telephone
713-863-2382-Facsimile

Functional Parts

Part

No: Description:

B1100075	FAN CAPACITOR 50 HZ (M1, M2)
B1100074	FAN CAPACITOR 60 HZ (M1, M2)
B1100124	FAN MOTOR (18 / 50 HZ), (S3A003VT6) (M3, M4, M5, M6)
B1100138	FAN MOTOR (18 / 60 HZ), (S3A003CT6) (M3, M4, M5, M6)
B1100139	FAN MOTOR (24 / 50 HZ), (S3A003U15) (M3, M4, M5, M6)
B1100125	FAN MOTOR (24 / 60 HZ), (S3A010CE4) (M3, M4, M5, M6)
B1100137	FAN MOTOR 50 HZ (T-05A4P10W) (M1, M2)
B1100103	FAN MOTOR 60 HZ (T-05B4P10) (M1, M2)
B1100141	LOW VOLTAGE TRANSFORMER (M1, M2)
B1100135	PCB (SET OF 3) (S3E047E96) (M1, M2)
B1100136	PCB (SET OF 3) (S3E047F96) (M3, M4, M5, M6)
B1100072	STEPPING MOTOR 50/60 HZ (M1, M2)

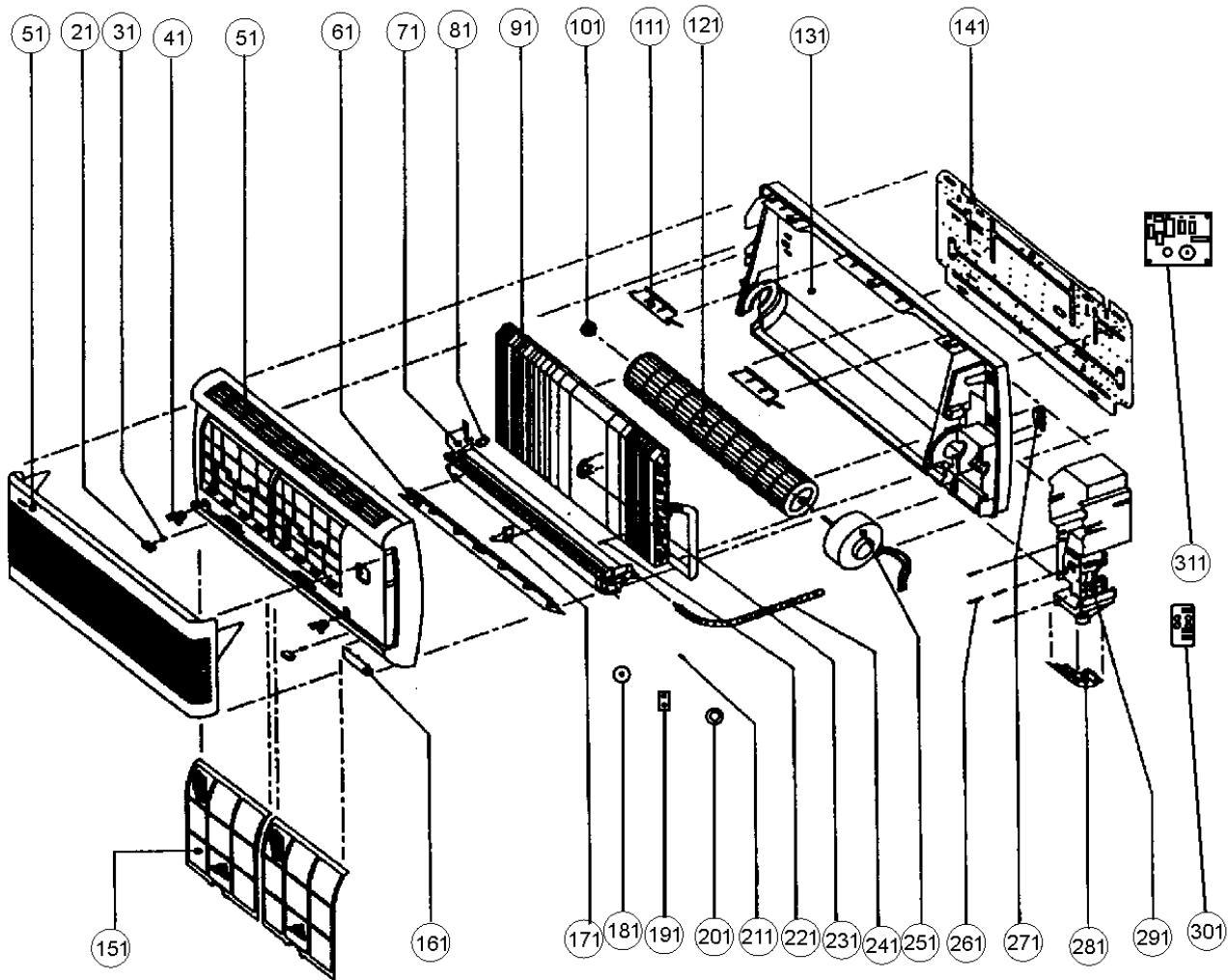
SPECIAL PARTS

B1100073	GOODMAN LOGO (M1, M2)
RP-206	REPAIR PARTS MANUAL

Expanded Model Nomenclature

M1 - WMH12-1
M2 - WMH12-2
M3 - WMH18-1
M4 - WMH18-2
M5 - WMH24-1
M6 - WMH24-2

WMH12-1/2



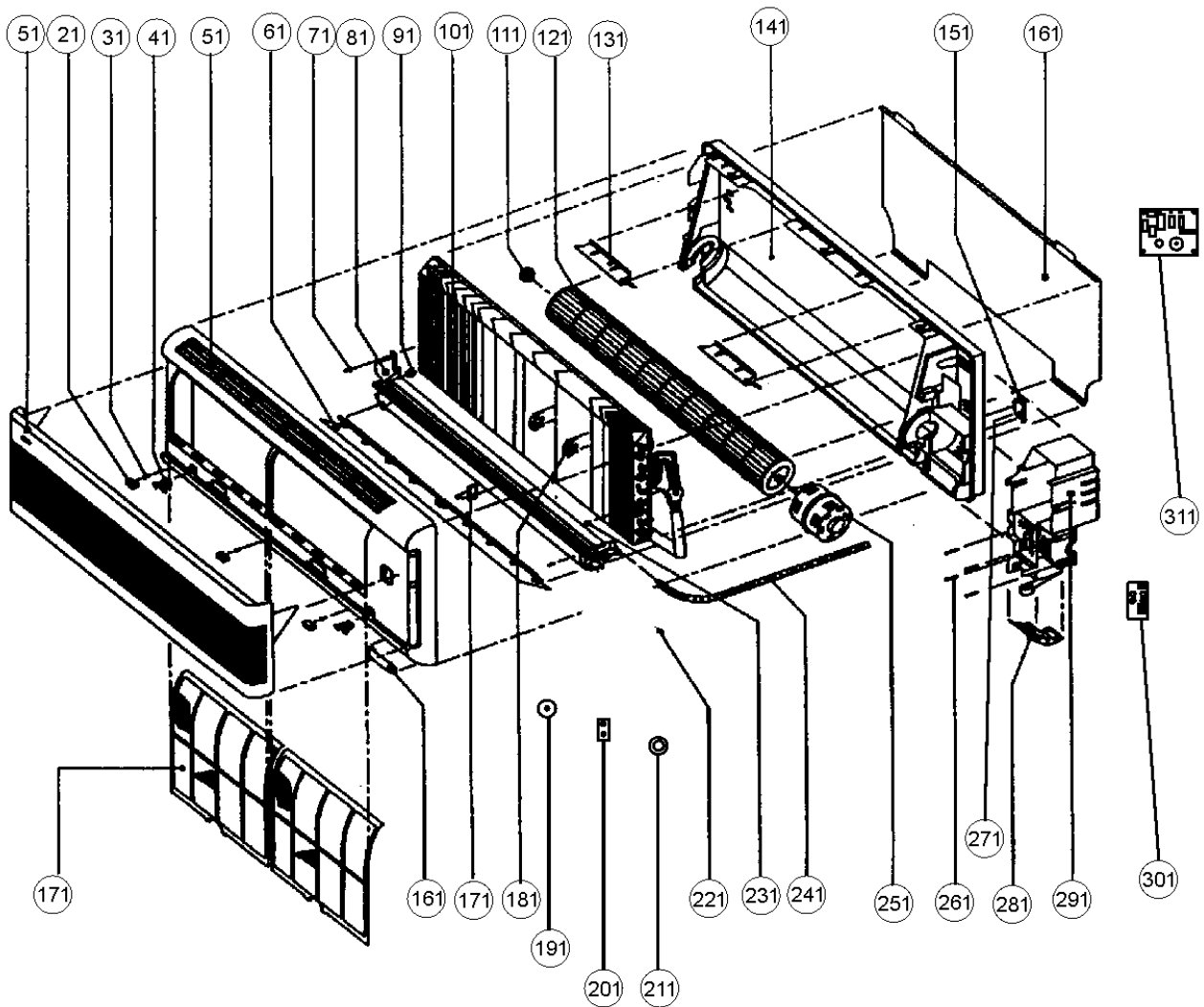
WMH12-1/2

Ref. Part No:	Ref. Part No:	Description:	Description:
<i>Image 1:</i>			
21	B1100081	SCREW CAP (S3G093BR4) (M1, M2)	
31	B1100082	FRONT FRAME SCREW (M1, M2)	
41	B1100083	PRESS LOCK (M1, M2)	
51	B1100080	FRONT FRAME / GRILLE (M1, M2)	
61	B1100084	AIR DISCHARGE LOUVER (M1, M2)	
71	B1100085	AIR DISCHARGE HOUSING ASSY (M1, M2)	
81	B1100086	DRAIN PIPE CAP (M1, M2)	
91	B1100087	COIL ASSY (M1, M2)	
101	B1100088	BLOWER BEARING ASSY (M1, M2)	
111	B1100089	BACK HOUSING COVER (M1, M2)	
121	B1100090	CROSSFLOW FAN (M1, M2)	
131	B1100091	BACK HOUSING (M1, M2)	
141	B1100092	MOUNTING PLATE (M1, M2)	
151	B1100093	FILTER (M1, M2)	
161	B1100094	LED DISPLAY CAP (M1, M2)	
171	B1100095	AIR DISCHARGE LOUVER CLIP (M1, M2)	
181	B1100072	STEPPING MOTOR 50/60 HZ (M1, M2)	
191	B1100141	LOW VOLTAGE TRANSFORMER (M1, M2)	
201	B1100075	FAN CAPACITOR 50 HZ (M1, M2)	
201	B1100074	FAN CAPACITOR 60 HZ (M1, M2)	
211	B1100099	STEPPING SCREW (C3F069AQ6) (M1, M2)	
221	B1100100	EARTH WIRE SCREW (M1, M2)	
231	B1100101	THERMISTOR HOLDER (M1, M2)	
241	B1100102	DRAIN HOLE ASSY (M1, M2)	
251	B1100137	FAN MOTOR 50 HZ (T-05A4P10W) (M1, M2)	
251	B1100103	FAN MOTOR 60 HZ (T-05B4P10) (M1, M2)	
261	B1100104	CONTROL BOX SCREW (M1, M2)	
271	B1100105	PIPING CLAMP (M1, M2)	
281	B1100106	LED DISPLAY HOLDER (M1, M2)	
291	B1100107	CONTROL BOX CASING (M1, M2)	
301	B1100130	HANDSET CONTROL (S3E047J96) (M1, M2)	
311	B1100135	PCB (SET OF 3) (S3E047E96) (M1, M2)	
NS	B1100073	GOODMAN LOGO (M1, M2)	

Expanded Model Nomenclature

M1 - WMH12-1
M2 - WMH12-2
M3 - WMH18-1
M4 - WMH18-2
M5 - WMH24-1
M6 - WMH24-2

WMH18-1/2 and WMH24-1/2



WMH18-1/2 and WMH24-1/2

Ref. Part No:	No:	Description:	Ref. Part No:	No:	Description:
<i>Image 1:</i>			Expanded Model Nomenclature		
21	B11000140	SCREW CAP (S3G093A78) (M3, M4, M5, M6)	M1	-	WMH12-1
31	B1100082	FRONT FRAME SCREW (M3, M4, M5, M6)	M2	-	WMH12-2
41	B1100083	PRESS LOCK (M3, M4, M5, M6)	M3	-	WMH18-1
51	B1100118	FRONT FRAME / GRILLE (M3, M4, M5, M6)	M4	-	WMH18-2
61	B1100117	AIR DISCHARGE LOUVER (M3, M4, M5, M6)	M5	-	WMH24-1
71	B1100104	A/D HOUSING SCREW (M3, M4, M5, M6)	M6	-	WMH24-2
81	B1100116	A/D HOUSING ASSY (M3, M4, M5, M6)			
91	B1100086	DRAIN PIPE CAP (M3, M4, M5, M6)			
101	B1100114	COIL ASSY (WMH18) (M3, M4, M5, M6)			
101	B1100115	COIL ASSY (WMH24) (M3, M4, M5, M6)			
111	B1100088	BLOWER BEARING ASSY (M3, M4, M5, M6)			
121	B1100113	CROSSFLOW FAN ASSY (M3, M4, M5, M6)			
131	B1100112	BACK HOUSING COVER (M3, M4, M5, M6)			
141	B1100111	BACK HOUSING (M3, M4, M5, M6)			
151	B1100105	PIPING CLAMP (M3, M4, M5, M6)			
161	B1100110	MOUNTING PLATE (M3, M4, M5, M6)			
171	B1100119	FILTER (M3, M4, M5, M6)			
181	B1100120	LED DISPLAY CAP (M3, M4, M5, M6)			
191	B1100121	AIR DISCHARGE LOUVER CLIP (M3, M4, M5, M6)			
201	B1100122	THERMISTOR HOLDER (M3, M4, M5, M6)			
211	B1100072	STEPPING MOTOR 50/60 HZ (M3, M4, M5, M6)			
221	B1100141	LOW VOLTAGE TRANSFORMER (M3, M4, M5, M6)			
231	B1100075	FAN CAPACITOR 50 HZ (M3, M4, M5, M6)			
231	B1100074	FAN CAPACITOR 60 HZ (M3, M4, M5, M6)			
241	B1100099	STEPPING SCREW (C3F069AQ6) (M3, M4, M5, M6)			
251	B1100100	EARTH WIRE SCREW (M3, M4, M5, M6)			
261	B1100123	DRAIN HOLE ASSY (M3, M4, M5, M6)			
271	B1100124	FAN MOTOR (18 / 50 HZ), (S3A003VT6) (M3, M4, M5, M6)			
271	B1100138	FAN MOTOR (18 / 60 HZ), (S3A003CT6) (M3, M4, M5, M6)			
271	B1100139	FAN MOTOR (24 / 50 HZ), (S3A003U15) (M3, M4, M5, M6)			
271	B1100125	FAN MOTOR (24 / 60 HZ), (S3A010CE4) (M3, M4, M5, M6)			
281	B1100104	CONTROL BOX SCREW (M3, M4, M5, M6)			
291	B1100106	LED DISPLAY HOLDER (M3, M4, M5, M6)			
301	B1100126	CONTROL BOX CASING (M3, M4, M5, M6)			
311	B1100130	HANDSET CONTROL (S3E047J96) (M3, M4, M5, M6)			
321	B1100136	PCB (SET OF 3) (S3E047F96) (M3, M4, M5, M6)			
NS	B1100073	GOODMAN LOGO (M3, M4, M5, M6)			