

## PGJ Series (2 - 4 ton) Rooftop Package Units

PGJ024050-1A  
PGJ024050-1B  
PGJ024075-1A  
PGJ024075-1B  
PGJ030050-1A  
PGJ030050-1B  
PGJ030075-1A  
PGJ030075-1B  
PGJ036075-1A  
PGJ036075-1B  
PGJ036100-1  
PGJ036100-1A  
PGJ036100-1B  
PGJ042075-1A  
PGJ042075-1B  
PGJ042100-1A  
PGJ042100-1B  
PGJ048075-1  
PGJ048100-1



This manual is to be used by qualified technicians only.

This manual replaces RP-197K.

© 2003-2008 Goodman Manufacturing Company, L.P. ♦ 5151 San Felipe, Suite 500 ♦ Houston, TX 77056

# Important Information

---

## Index

Functional Parts List .....	3
Illustration and Parts .....	4 - 11

*Views shown are for parts illustrations only, not servicing procedures.*

Rev. L: Added model PGJ036100-1. Added notes to pages 4 and 8.  
[03/01/09]: Added note to inshot burner assy.

### Text Codes:

- AR - As Required
- NA - Not Available
- NS - Not Shown
- 00000000 - See Note
- QTY - Quantity Example (QTY 3) (If Quantity not shown, Quantity = 1)
- M - Model Example (M1) (If M Code not shown, then part is used on all Models)

### Expanded Model Nomenclature:

Example M1 - Model#1 M2 - Model#2 M3 - Model#3
---

Goodman Manufacturing Company, L.P. is not responsible for personal injury or property damage resulting from improper service. Review all service information before beginning repairs.

Warranty service must be performed by an authorized technician, using authorized factory parts. If service is required after the warranty expires, Goodman Manufacturing Company, L.P. also recommends contacting an authorized technician and using authorized factory parts.

Goodman Manufacturing Company, L.P. reserves the right to discontinue, or change at any time, specifications or designs without notice or without incurring obligations.

For assistance within the U.S.A. contact:  
Consumer Affairs Department  
Goodman Manufacturing Company, L.P.  
7401 Security Way  
Houston, Texas 77040  
877-254-4729-Telephone  
713-863-2382-Facsimile

For assistance outside the U.S.A. contact:  
International Division  
Goodman Manufacturing Company, L.P.  
7401 Security Way  
Houston, Texas 77040  
713-861-2500-Telephone  
713-863-2382-Facsimile

# Functional Parts

## Part

## No: Description:

B1370113	AUXILIARY LIMIT SWITCH 120°F
B13400803PAS	BLOWER MOTOR 1 HP PROGRAMMED ECM (M9, M10, M11, M12, M13, M14, M15, M16, M17, M18, M19)
B13400802PAS	BLOWER MOTOR 1/2 HP PROGRAMMED ECM (M1, M2, M3, M4, M5, M6, M7, M8)
CAP050300370RSS	CAPACITOR 5/30/370V (M1, M2, M3, M4)
CAP050350440RSS	CAPACITOR 5/35/440V (M5, M6, M7, M8, M10, M13, M18, M19)
CAP050400370RSS	CAPACITOR 5/40/370V (M9, M11, M12)
CAP050450370RSS	CAPACITOR 5/45/370V (M14, M16)
CAP050500440RTS	CAPACITOR 5/50/440V (M15, M17)
CR20K6PFV960	COMPRESSOR 19600, 208/230/60/1 (M1, M3)
CR21K7PFV930	COMPRESSOR 21000, 208/230/60/1 (M2, M4)
CR24K7PFV970	COMPRESSOR 24300, 208/230/60/1 (M6, M8)
CR31K7PFV970	COMPRESSOR 30700, 208/230/60/1 (M10, M13)
CR35K6PFV960	COMPRESSOR 35000, 208/230/60/1 (M9, M11, M12)
ZR36K3PFV930	COMPRESSOR 36900, 208/230/60/1 (M15, M17)
ZR42K3PFV930	COMPRESSOR 42800, 208/230/60/1 (M18, M19)
B9266833AS	COMPRESSOR H27B24QCBCA (M5, M7)
B9266838AS	COMPRESSOR H29A383CBCA (M14, M16)
0131M00008PS	COND MOTOR 1/3 HP, 1 SP, 6 PL (M18, M19)
0131M00007PS	COND MOTOR 1/4 HP, 1 SP, 6 PL (M1, M2, M3, M4, M5, M6, M7, M8, M9, M10, M11, M12, M13, M14, M15, M16, M17)
CONT2P025024VS	CONTACTOR 25 AMP, 2P, 24V (M1, M2, M3, M4, M5, M6, M7, M8, M9, M10, M11, M12, M13)
CONT2P030024VS	CONTACTOR 30 AMP, 2P, 24V (M14, M15, M16, M17, M18, M19)
B1401012	DIRECT SPARK IGNITOR*
	Units w/serial codes 9401 thru 9606, order ignitor B1401011S.
0130F00010	FLAME SENSOR
B1282628	GAS VALVE (36G)*
	Units w/serial codes 9401 thru 9606, order gas valve B1282619.
PCBAG123S	IGNITION BOARD, DSI INTEGRATED*
	Units w/serial codes 9401 thru 9503, order board B1809904S; Units w/serial codes 9504 thru 9606 order B1809911S.
1370901S	LIMIT CONTROL 180° (M7, M8, M16, M17, M19)
1370902S	PRIMARY LIMIT SWITCH 210°F (M3, M4, M11, M12, M13, M14, M15, M18)
1370903S	PRIMARY LIMIT SWITCH 240°F (M1, M2, M5, M6, M9, M10)
13500803PAS	PROGRAMMED ECM MODULE, 1 HP (M9, M10, M11, M12, M13, M14, M15, M16, M17, M18, M19)
13500802PAS	PROGRAMMED ECM MODULE, 1/2 HP (M1, M2, M3, M4, M5, M6, M7, M8)

B1370154	ROLL OUT SWITCH, 350° W/O BRKT.
B1141670	START ASSIST 305C20A CERA-MITE (M9, M11, M12, M14, M16)
B1368260	TERMINAL BOARD
B1141643	TRANSFORMER 208/230, 24V
B2959000S	VENT MOTOR

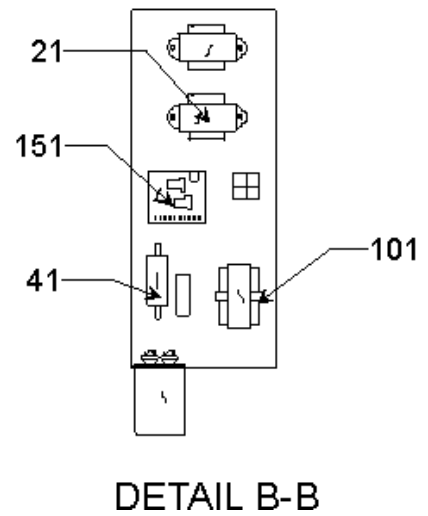
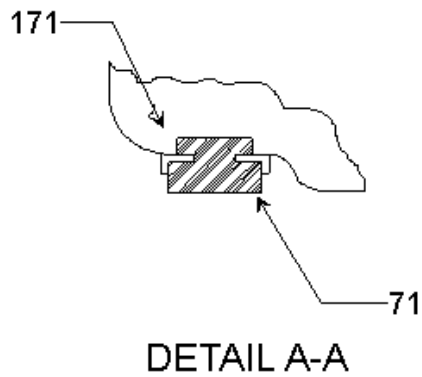
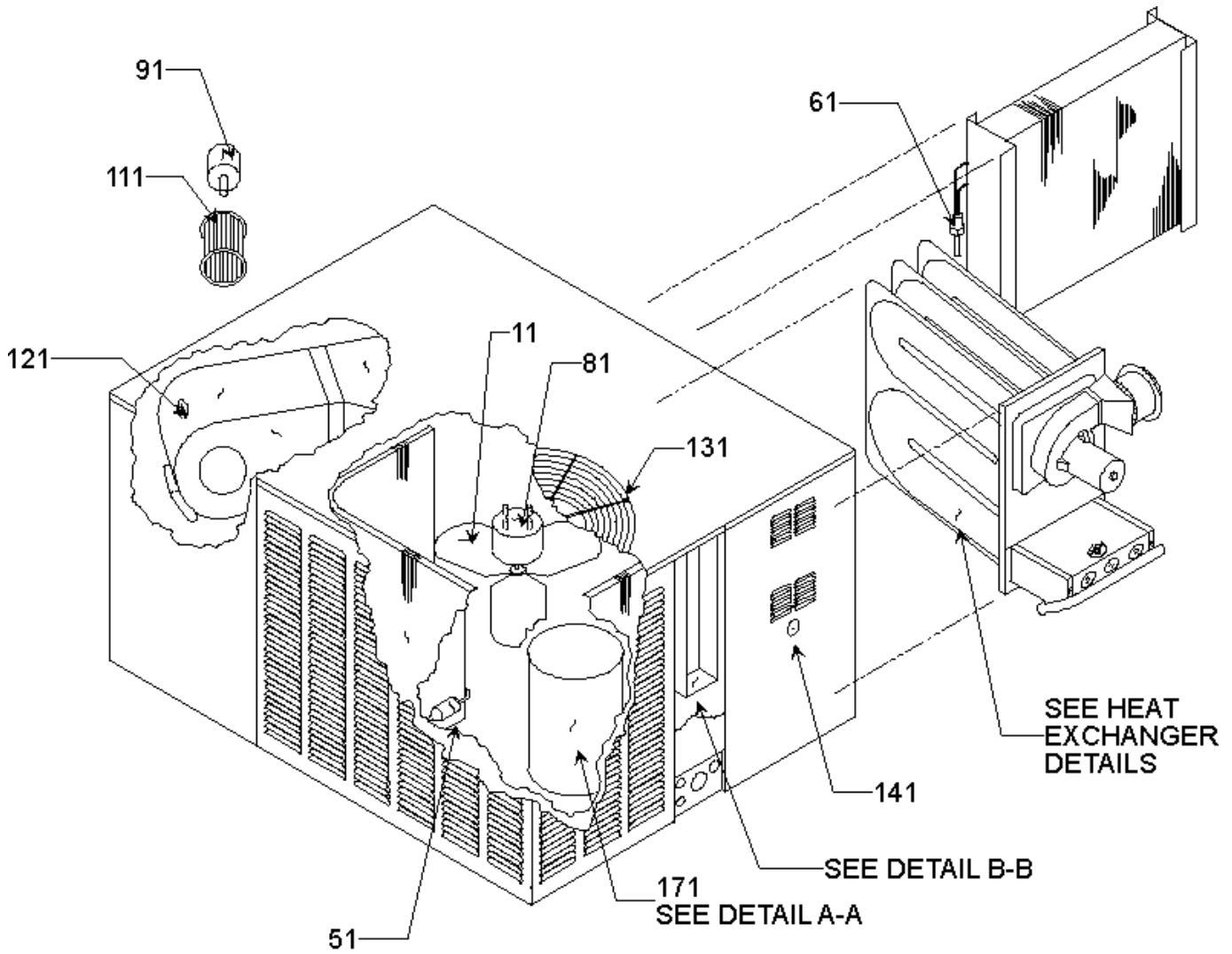
### SPECIAL PARTS

IO-148D	INSTALLATION INSTRUCTIONS
RP-197L	REPAIR PARTS MANUAL

### Expanded Model Nomenclature

M1 - PGJ024050-1A
M2 - PGJ024050-1B
M3 - PGJ024075-1A
M4 - PGJ024075-1B
M5 - PGJ030050-1A
M6 - PGJ030050-1B
M7 - PGJ030075-1A
M8 - PGJ030075-1B
M9 - PGJ036075-1A
M10 - PGJ036075-1B
M11 - PGJ036100-1
M12 - PGJ036100-1A
M13 - PGJ036100-1B
M14 - PGJ042075-1A
M15 - PGJ042075-1B
M16 - PGJ042100-1A
M17 - PGJ042100-1B
M18 - PGJ048075-1
M19 - PGJ048100-1

# Motor, Coil, and Control

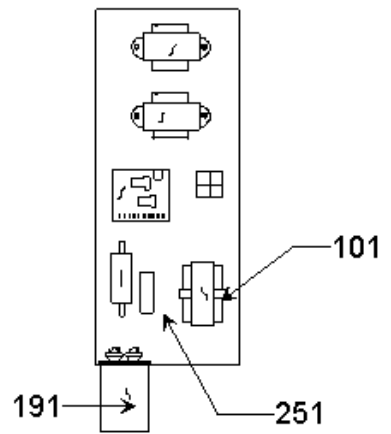
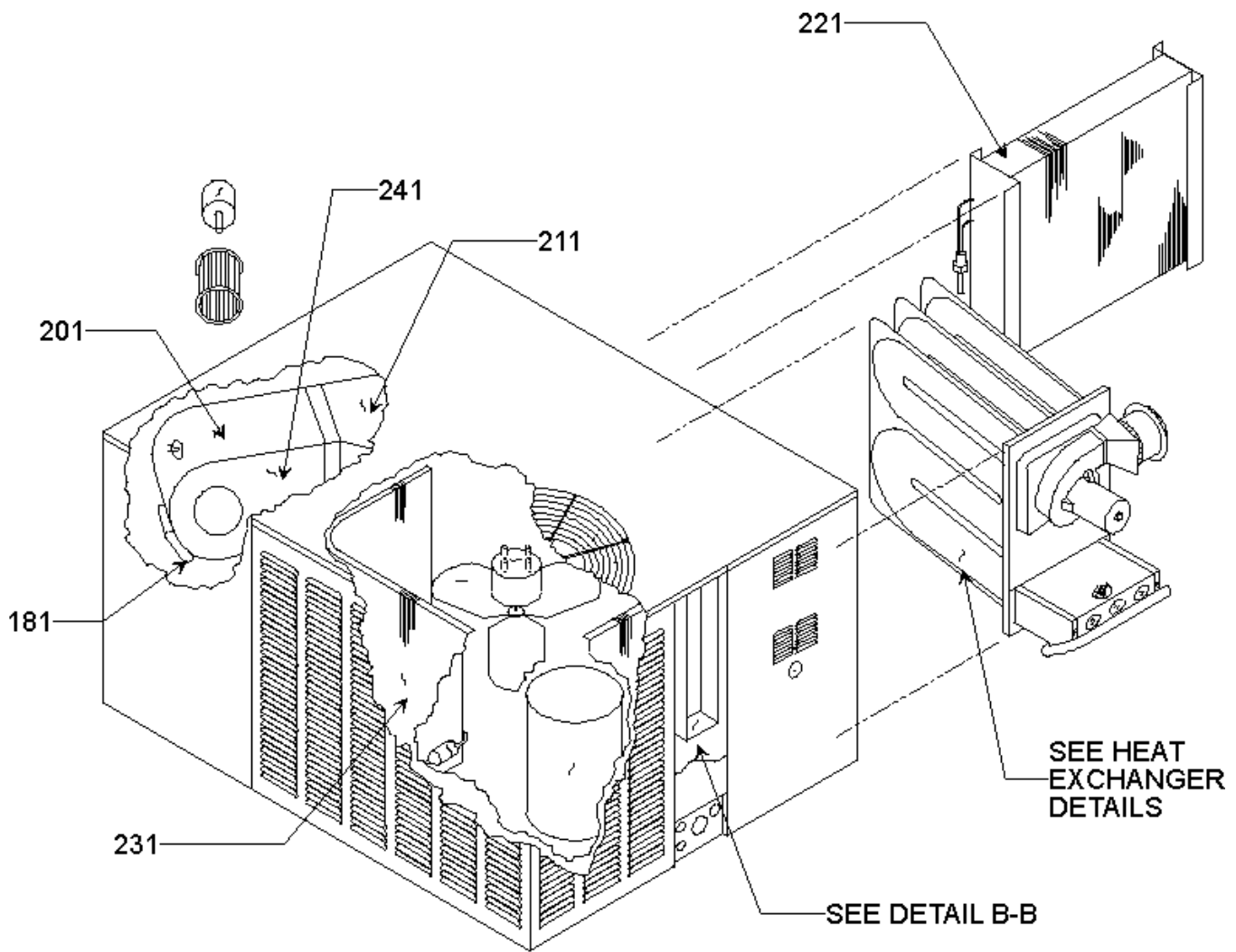


# Motor, Coil, and Control

Ref. Part No:	No:	Description:	Ref. Part No:	No:	Description:
<i>Image 1:</i>			<i>Image 1:</i>		
11	B1086749	FAN BLADE 20", 3 BLADE, 30° (M1, M2, M3, M4, M5, M6, M7, M8)	171	ZR36K3PFV930	COMPRESSOR 36900, 208/230/60/1 (M15, M17)
11	B1086750S	FAN BLADE 22", 3 BLADE, 24° (M9, M10, M11, M12, M13, M14, M15, M16, M17)	171	ZR42K3PFV930	COMPRESSOR 42800, 208/230/60/1 (M18, M19)
11	B1086748S	FAN BLADE 22", 3 BLADE, 30° (M18, M19)	171	B9266833AS	COMPRESSOR H27B24QCBCA (M5, M7)
21	B1141643	TRANSFORMER 208/230, 24V	171	B9266838AS	COMPRESSOR H29A383CBCA (M14, M16)
41	B1141670	START ASSIST 305C20A CERA-MITE (M9, M11, M12, M14, M16)	<b>Expanded Model Nomenclature</b>		
51	B1219212	SINGLE-FLOW FILTER DRIER, STEEL (M1, M2, M3, M4, M5, M6, M7, M8, M9, M10, M11, M12, M13, M14, M15, M16, M17)	<div style="border: 1px solid black; padding: 5px;"> M1 - PGJ024050-1A  M2 - PGJ024050-1B  M3 - PGJ024075-1A  M4 - PGJ024075-1B  M5 - PGJ030050-1A  M6 - PGJ030050-1B  M7 - PGJ030075-1A  M8 - PGJ030075-1B  M9 - PGJ036075-1A  M10 - PGJ036075-1B  M11 - PGJ036100-1  M12 - PGJ036100-1A  M13 - PGJ036100-1B  M14 - PGJ042075-1A  M15 - PGJ042075-1B  M16 - PGJ042100-1A  M17 - PGJ042100-1B  M18 - PGJ048075-1  M19 - PGJ048100-1 </div>		
51	B1219225	SINGLE-FLOW FILTER DRIER, STEEL (M18, M19)			
61	B2114878	FLOWRATOR (M14, M16)			
61	B1314459	FLOWRATOR .059 (M1, M2, M3, M4)			
61	B1314462	FLOWRATOR .062 (M5, M6, M7, M8)			
61	B2114671	FLOWRATOR .071 (M9, M10, M11, M12, M13)			
61	B2114876	FLOWRATOR .076 (M15, M17)			
61	B2114882	FLOWRATOR .082 (M18, M19)			
71	B1339530	COMPRESSOR GROMMET [QTY 4] (M1, M2, M3, M4, M5, M6, M7, M8, M10, M13)			
71	B1339533	COMPRESSOR GROMMET [QTY 4] (M9, M11, M12, M14, M15, M16, M17, M18, M19)			
81	0131M00008PS	COND MOTOR 1/3 HP, 1 SP, 6 PL (M18, M19)			
81	0131M00007PS	COND MOTOR 1/4 HP, 1 SP, 6 PL (M1, M2, M3, M4, M5, M6, M7, M8, M9, M10, M11, M12, M13, M14, M15, M16, M17)			
91	B13400803PAS	BLOWER MOTOR 1 HP PROGRAMMED ECM (M9, M10, M11, M12, M13, M14, M15, M16, M17, M18, M19)			
91	B13400802PAS	BLOWER MOTOR 1/2 HP PROGRAMMED ECM (M1, M2, M3, M4, M5, M6, M7, M8)			
101	CONT2P025024VS	CONTACTOR 25 AMP, 2P, 24V (M1, M2, M3, M4, M5, M6, M7, M8, M9, M10, M11, M12, M13)			
101	CONT2P030024VS	CONTACTOR 30 AMP, 2P, 24V (M14, M15, M16, M17, M18, M19)			
111	B1368016S	BLOWER WHEEL 10 X 8 (M1, M2, M3, M4, M5, M6, M7, M8)			
111	B1368000S	BLOWER WHEEL 11 X 10 (M9, M10, M11, M12, M13, M14, M15, M16, M17, M18, M19)			
121	B1370113	AUXILIARY LIMIT SWITCH 120°F			
131	0152G00002S	FAN GRILLE (M9, M10, M11, M12, M13, M14, M15, M16, M17, M18, M19)			
131	B1376914	FAN GRILLE 20" (M1, M2, M3, M4, M5, M6, M7, M8)			
141	B1392136	VIEW PORT BUSHING-BLOWER DOOR 2"			
151	PCBAG123S	IGNITION BOARD, DSI INTEGRATED* Units w/serial codes 9401 thru 9503, order board B1809904S; Units w/serial codes 9504 thru 9606 order B1809911S.			
171	CR20K6PFV960	COMPRESSOR 19600, 208/230/60/1 (M1, M3)			
171	CR21K7PFV930	COMPRESSOR 21000, 208/230/60/1 (M2, M4)			
171	CR24K7PFV970	COMPRESSOR 24300, 208/230/60/1 (M6, M8)			
171	CR31K7PFV970	COMPRESSOR 30700, 208/230/60/1 (M10, M13)			
171	CR35K6PFV960	COMPRESSOR 35000, 208/230/60/1 (M9, M11, M12)			

\*Units with serial codes 9607 thru present.

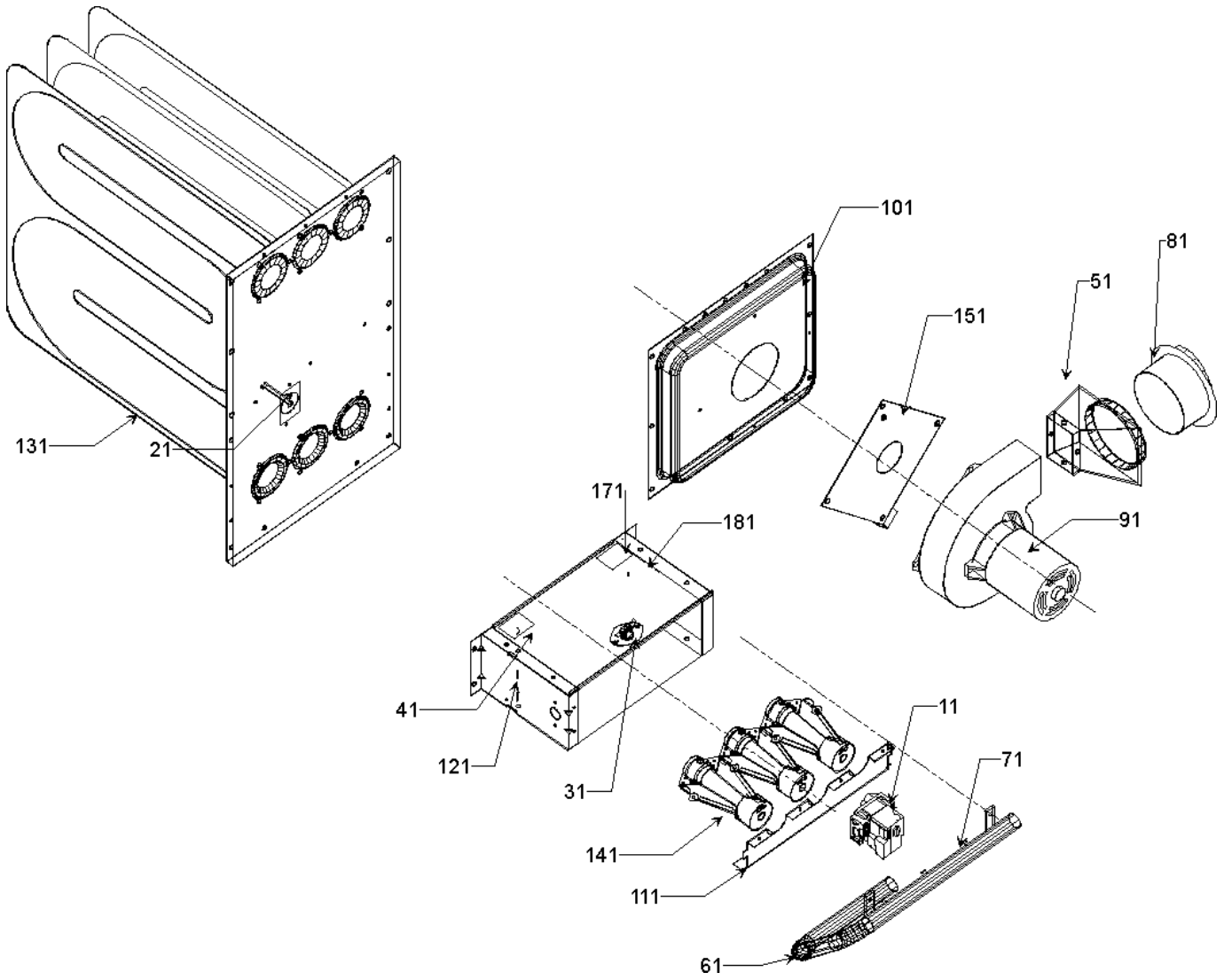
# Motor, Coil, and Control



# Motor, Coil, and Control

Ref. Part No:	No:	Description:	Ref. Part No:	No:	Description:
<i>Image 1:</i>			Expanded Model Nomenclature		
181	1887600	CONTROL BOX 4 X 4	M1 -	PGJ024050-1A	
191	CAP050300370RSS	CAPACITOR 5/30/370V (M1, M2, M3, M4)	M2 -	PGJ024050-1B	
191	CAP050350440RSS	CAPACITOR 5/35/440V (M5, M6, M7, M8, M10, M13, M18, M19)	M3 -	PGJ024075-1A	
191	CAP050400370RSS	CAPACITOR 5/40/370V (M9, M11, M12)	M4 -	PGJ024075-1B	
191	CAP050450370RSS	CAPACITOR 5/45/370V (M14, M16)	M5 -	PGJ030050-1A	
191	CAP050500440RTS	CAPACITOR 5/50/440V (M15, M17)	M6 -	PGJ030050-1B	
201	2539302S	BLOWER HOUSING 11 X 10 (M9, M10, M11, M12, M13, M14, M15, M16, M17, M18, M19)	M7 -	PGJ030075-1A	
201	2939303	BLOWER HOUSING ASSY 10 X 8 (M1, M2, M3, M4, M5, M6, M7, M8)	M8 -	PGJ030075-1B	
211	2912310S	BLOWER CHUTE ASSY 2 CELL (MED) (M1, M2, M5, M6)	M9 -	PGJ036075-1A	
211	2922304S	BLOWER CHUTE ASSY 3 CELL (LRG) (M9, M10, M14, M15, M18)	M10 -	PGJ036075-1B	
211	2912306S	BLOWER CHUTE ASSY 3 CELL (MED) (M3, M4, M7, M8)	M11 -	PGJ036100-1	
211	2922305S	BLOWER CHUTE ASSY 4 CELL (LRG) (M11, M12, M13, M16, M17, M19)	M12 -	PGJ036100-1A	
221	1262602	SERVICE EVAP. COIL W/DRIER (M1, M2, M3, M4)	M13 -	PGJ036100-1B	
221	1262604	SERVICE EVAP. COIL W/DRIER (M5, M6, M7, M8)	M14 -	PGJ042075-1A	
221	1262606	SERVICE EVAP. COIL W/DRIER (M14, M15, M16, M17, M18, M19)	M15 -	PGJ042075-1B	
221	1262642	SERVICE EVAP. COIL W/DRIER (M9, M10, M11, M12, M13)	M16 -	PGJ042100-1A	
231	1262502	TUBING ASSY, COND COIL LRG (M9, M10, M11, M12, M13, M14, M15, M16, M17, M18, M19)	M17 -	PGJ042100-1B	
231	1262501	TUBING ASSY, COND COIL MED (M1, M2, M3, M4, M5, M6, M7, M8)	M18 -	PGJ048075-1	
241	2968227S	BLOWER ASSY (10 X 8) [OBSOLETE] (M1, M2, M3, M4, M5, M6, M7, M8)	M19 -	PGJ048100-1	
241	2968217S	BLOWER ASSY (11 X 10) [OBSOLETE] (M9, M10, M11, M12, M13, M14, M15, M16, M17, M18, M19)			
251	B1368260	TERMINAL BOARD			
NS	B1376853	MOTOR MOUNT ARM (M1, M2, M3, M4, M5, M6, M7, M8)			
NS	B1376857	MOTOR MOUNT ARM (M9, M10, M11, M12, M13, M14, M15, M16, M17, M18, M19)			
NS	B1376851	MOTOR MOUNT BAND			
NS	13500803PAS	PROGRAMED ECM MODULE, 1 HP (M9, M10, M11, M12, M13, M14, M15, M16, M17, M18, M19)			
NS	13500802PAS	PROGRAMED ECM MODULE, 1/2 HP (M1, M2, M3, M4, M5, M6, M7, M8)			
NS	B1378701	WIRE HARNESS, HIGH VOLTAGE (5-PIN ECM)			
NS	B1378700	WIRE HARNESS, LOW VOLTAGE (16-PIN ECM)			

# Heat Exchanger, Gas Valve, and Manifold

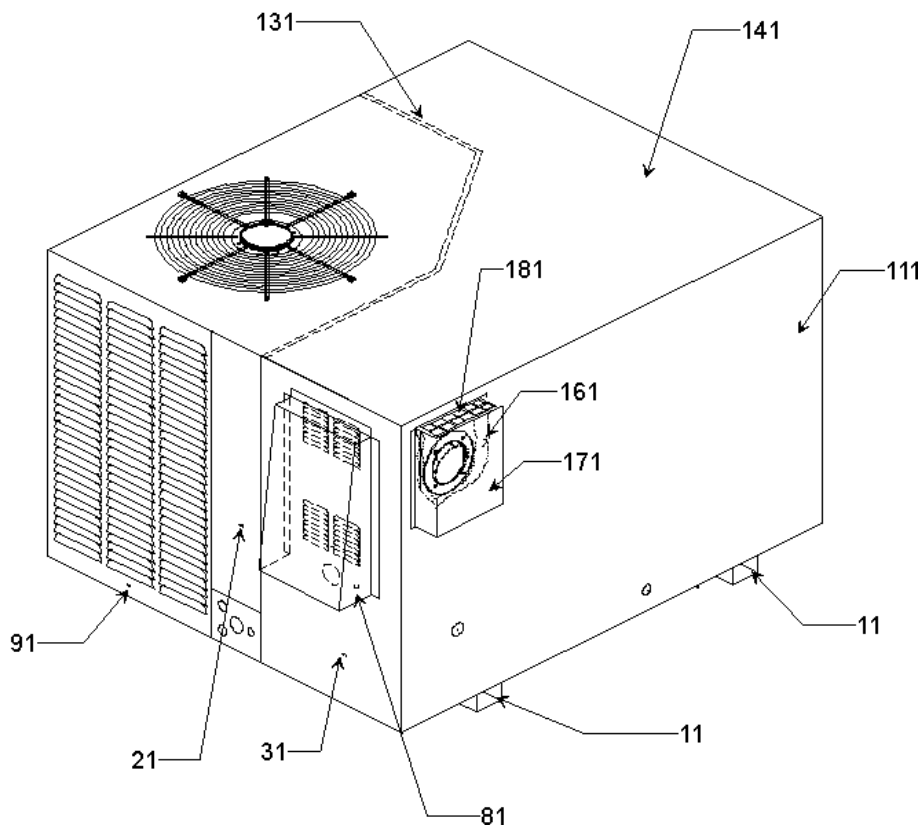
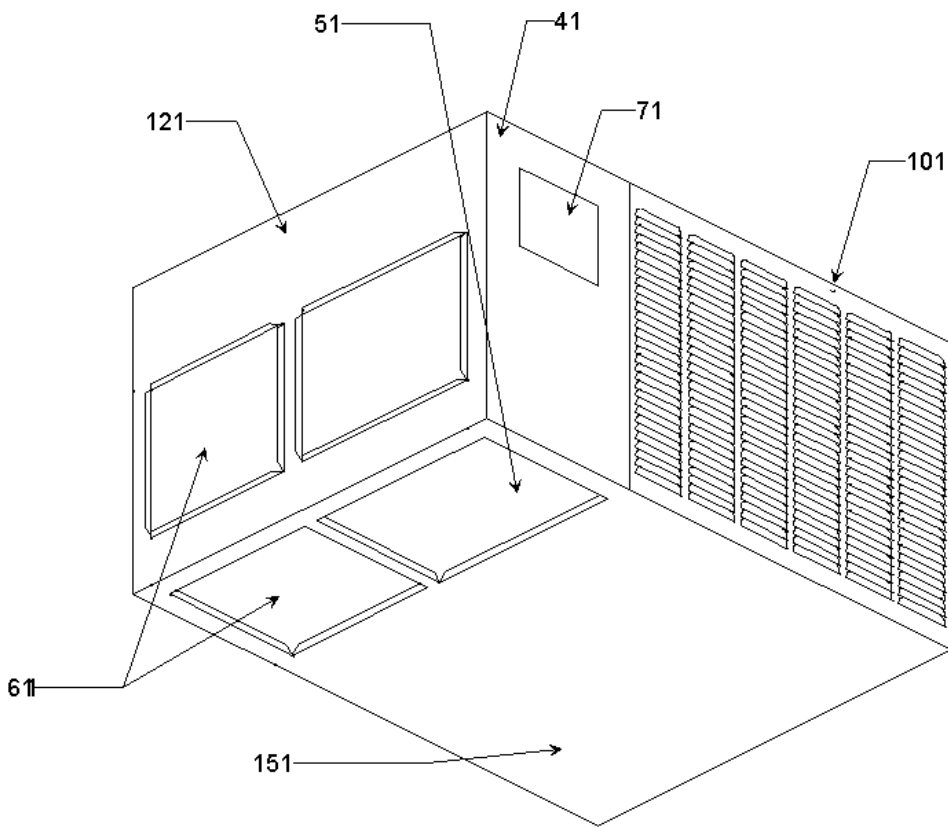


# Heat Exchanger, Gas Valve, and Manifold

Ref. Part No:	No:	Description:	Ref. Part No:	No:	Description:
<i>Image 1:</i>			<i>Image 1:</i>		
11	B1282628	GAS VALVE (36G)* <small>Units w/serial codes 9401 thru 9606, order gas valve B1282619.</small>	181	4013006	BURNER BOX TOP 3 CELL (M3, M4, M7, M8, M9, M10, M14, M15, M18)
21	1370901S	LIMIT CONTROL 180° (M7, M8, M16, M17, M19)	181	4013007	BURNER BOX TOP 4 CELL (M11, M12, M13, M16, M17, M19)
21	1370902S	PRIMARY LIMIT SWITCH 210°F (M3, M4, M11, M12, M13, M14, M15, M18)	<b>Expanded Model Nomenclature</b>		
21	1370903S	PRIMARY LIMIT SWITCH 240°F (M1, M2, M5, M6, M9, M10)	<div style="border: 1px solid black; padding: 5px;"> M1 - PGJ024050-1A  M2 - PGJ024050-1B  M3 - PGJ024075-1A  M4 - PGJ024075-1B  M5 - PGJ030050-1A  M6 - PGJ030050-1B  M7 - PGJ030075-1A  M8 - PGJ030075-1B  M9 - PGJ036075-1A  M10 - PGJ036075-1B  M11 - PGJ036100-1  M12 - PGJ036100-1A  M13 - PGJ036100-1B  M14 - PGJ042075-1A  M15 - PGJ042075-1B  M16 - PGJ042100-1A  M17 - PGJ042100-1B  M18 - PGJ048075-1  M19 - PGJ048100-1 </div>		
31	B1370154	ROLL OUT SWITCH, 350° W/O BRKT.			
41	B1401012	DIRECT SPARK IGNITOR* <small>Units w/serial codes 9401 thru 9606, order ignitor B1401011S.</small>			
51	4053501S	CHIMNEY			
61	B2526000	MANIFOLD - 3 BRNR (M1, M2, M5, M6)			
61	B2526001	MANIFOLD - 3 BRNR (M3, M4, M7, M8, M9, M10, M14, M15, M18)			
61	B2526002	MANIFOLD - 4 BRNR (M11, M12, M13, M16, M17, M19)			
71	B2589343	#43 ORIFICE (QTY AR)			
81	B2913601	CHIMNEY EXTENSION (LRG) (M9, M10, M11, M12, M13, M14, M15, M16, M17, M18, M19)			
81	B2913600	CHIMNEY EXTENSION (SML & MED) (M1, M2, M3, M4, M5, M6, M7, M8)			
91	B2959000S	VENT MOTOR			
101	2510001S	FLUE COLLECTOR BOX 17.5"			
111	2513500	BURNER BRACKET 2B (M1, M2, M5, M6)			
111	2513501	BURNER BRACKET 3B (M3, M4, M7, M8, M9, M10, M14, M15, M18)			
111	2513502	BURNER BRACKET 4B (M11, M12, M13, M16, M17, M19)			
121	2932605	BURNER BOX ASSY, 2 CELL, 350°F (M1, M2, M5, M6)			
121	2932606	BURNER BOX ASSY, 3 CELL, 350°F (M3, M4, M7, M8, M9, M10, M14, M15, M18)			
121	2932607	BURNER BOX ASSY, 4 CELL, 350°F (M11, M12, M13, M16, M17, M19)			
131	2921302S	SUB-ASSY, HEAT EXCHANGER 2 CELL (M1, M2, M5, M6)			
131	2921303S	SUB-ASSY, HEAT EXCHANGER 3 CELL (M3, M4, M7, M8)			
131	2921305S	SUB-ASSY, HEAT EXCHANGER 3 CELL (M9, M10, M14, M15, M18)			
131	2921306S	SUB-ASSY, HEAT EXCHANGER 4 CELL (M11, M12, M13, M16, M17, M19)			
141	B4022700	INSHOT BURNER ASSY 3" (QTY AR) <small>Units w/serial codes prior to 0101, see service bulletin SF-019.</small>			
151	2528011	FLUE RESTRICTOR PLATE 1.125" DIA (M1, M2, M5, M6)			
151	2528009	FLUE RESTRICTOR PLATE 1.375" DIA (M3, M4, M7, M8, M9, M10, M14, M15, M18)			
151	2528007S	FLUE RESTRICTOR PLATE 1.688" DIA (M11, M12, M13, M16, M17, M19)			
171	0130F00010	FLAME SENSOR			
181	4013005	BURNER BOX TOP 2 CELL (M1, M2, M5, M6)			

\*Units with serial codes 9607 thru present.

# Cabinet Assembly



# Cabinet Assembly

Ref. Part No:	No:	Description:	Ref. Part No:	No:	Description:
<i>Image 1:</i>			<i>Image 1:</i>		
11	1900806	BASE PAN CHANNEL ASSY [QTY 2] (M1, M2, M3, M4, M5, M6, M7, M8)	161	2937000	SIDE INTERNAL SHIELD
11	1900807	BASE PAN CHANNEL ASSY [QTY 2] (M9, M10, M11, M12, M13, M14, M15, M16, M17, M18, M19)	171	2937001P	SIDE EXTERNAL SHIELD
21	1901700P	CONTROL BOX PANEL (M1, M2, M3, M4, M5, M6, M7, M8)	181	2937002P	TOP SHIELD, TOP
21	1901701P	CONTROL BOX PANEL (M9, M10, M11, M12, M13, M14, M15, M16, M17, M18, M19)	Expanded Model Nomenclature		
31	2913300P	GAS ACCESS PANEL (M1, M2, M3, M4, M5, M6, M7, M8)	<div style="border: 1px solid black; padding: 5px;"> M1 - PGJ024050-1A  M2 - PGJ024050-1B  M3 - PGJ024075-1A  M4 - PGJ024075-1B  M5 - PGJ030050-1A  M6 - PGJ030050-1B  M7 - PGJ030075-1A  M8 - PGJ030075-1B  M9 - PGJ036075-1A  M10 - PGJ036075-1B  M11 - PGJ036100-1  M12 - PGJ036100-1A  M13 - PGJ036100-1B  M14 - PGJ042075-1A  M15 - PGJ042075-1B  M16 - PGJ042100-1A  M17 - PGJ042100-1B  M18 - PGJ048075-1  M19 - PGJ048100-1 </div>		
31	2923300P	GAS ACCESS PANEL (M9, M10, M11, M12, M13, M14, M15, M16, M17, M18, M19)			
41	2922400S	INDOOR FAN PANEL (M9, M10, M11, M12, M13, M14, M15, M16, M17, M18, M19)			
41	2912400S	INDOOR FAN PANEL [OBSOLETE] (M1, M2, M3, M4, M5, M6, M7, M8)			
51	2923000S	RETURN DUCT BLOCK OFF [OBSOLETE] (M9, M10, M11, M12, M13, M14, M15, M16, M17, M18, M19)			
51	2913000S	RETURN DUCT BLOCK-OFF (M1, M2, M3, M4, M5, M6, M7, M8)			
61	2913001S	SUPPLY DUCT BLOCK OFF (M1, M2, M3, M4, M5, M6, M7, M8)			
61	2923001S	SUPPLY DUCT BLOCK OFF (M9, M10, M11, M12, M13, M14, M15, M16, M17, M18, M19)			
71	1903012S	DAMPER BLOCK-OFF			
81	2907002S	WINDSHIELD FRONT (M1, M2, M3, M4, M5, M6, M7, M8)			
81	2907003S	WINDSHIELD FRONT (M9, M10, M11, M12, M13, M14, M15, M16, M17, M18, M19)			
91	2913400P	FRONT LOUVERED PANEL (M1, M2, M3, M4, M5, M6, M7, M8)			
91	2923400P	LOUVER PANEL, FRONT (M9, M10, M11, M12, M13, M14, M15, M16, M17, M18, M19)			
101	2913500P	LOUVERED SIDE PANEL (M1, M2, M3, M4, M5, M6, M7, M8)			
101	2923500P	LOUVERED SIDE PANEL (M9, M10, M11, M12, M13, M14, M15, M16, M17, M18, M19)			
111	2913800S	REAR PANEL (M1, M2, M3, M4, M5, M6, M7, M8)			
111	2923800S	REAR PANEL (M9, M10, M11, M12, M13, M14, M15, M16, M17, M18, M19)			
121	2923801S	DUCT PANEL LRG (M9, M10, M11, M12, M13, M14, M15, M16, M17, M18, M19)			
121	2913801S	DUCT PANEL MED (M1, M2, M3, M4, M5, M6, M7, M8)			
131	2923900S	PARTITION PANEL (M9, M10, M11, M12, M13, M14, M15, M16, M17, M18, M19)			
131	2913900S	PARTITION PANEL MED (M1, M2, M3, M4, M5, M6, M7, M8)			
141	2924201P	TOP PANEL [OBSOLETE] (M9, M10, M11, M12, M13, M14, M15, M16, M17, M18, M19)			
141	2914200S	TOP PANEL MED (M1, M2, M3, M4, M5, M6, M7, M8)			
151	2914501S	BASE PAN (M1, M2, M3, M4, M5, M6, M7, M8)			
151	2924501S	BASE PAN [OBSOLETE] (M9, M10, M11, M12, M13, M14, M15, M16, M17, M18, M19)			

