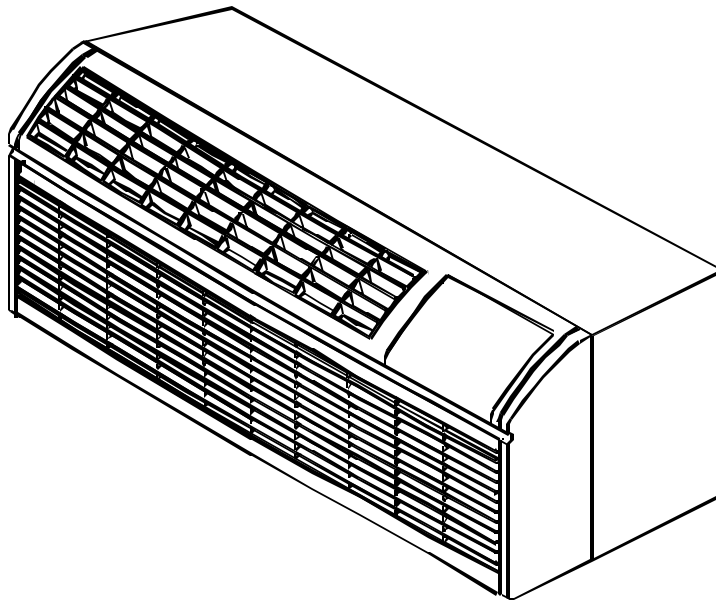


Parts

Package Terminal Heat Pump



Models and manufacturing numbers in this manual

NTP07A25A3B	P1232829R
NTP07A25A4B	P1232843R
NTP07A35A3B	P1232830R
NTP07A35A4B	P1232844R
NTP07A35C3B	P1232831R
NTP07A35C4B	P1232845R
NTP09A25A3B	P1232832R
NTP09A25A4B	P1232846R
NTP09A35A3B	P1232833R
NTP09A35A4B	P1232847R
NTP09A35C3B	P1232834R
NTP09A35C4B	P1232848R
NTP09A50A3B	P1232857R
NTP12A25A3B	P1232835R
NTP12A25A4B	P1232849R
NTP12A35A3B	P1232836R
NTP12A35A4B	P1232850R
NTP12A35C3B	P1232837R
NTP12A35C4B	P1232851R
NTP12A50A3B	P1232838R
NTP15A25A3B	P1232839R
NTP15A25A4B	P1232853R
NTP15A35A3B	P1232840R
NTP15A35A4B	P1232854R
NTP15A35C3B	P1232841R
NTP15A35C4B	P1232855R
NTP15A50A3B	P1232842R
NTP15A50A4B	P1232856R

This manual is to be used by qualified appliance technicians only. Amana does not assume any responsibility for property damage or personal injury for improper service procedures performed by an unqualified person.



RP4220027 (1)
Revision 0
September 2001

Important Information

Amana is not responsible for personal injury or property damage resulting from improper service. Review all service information before beginning repairs.

Warranty service must be performed by an authorized technician, using authorized factory parts. If service is required after the warranty expires, Amana also recommends contacting an authorized technician and using authorized factory parts.

For assistance within the U.S.A. contact:

Consumer Affairs Department
Amana Heating and Air Conditioning
1810 Wilson Parkway
Fayetteville, TN 37334
877-254-4729-Telephone
931-438-2922-Facsimile

For assistance outside the U.S.A. contact:

International Division
Amana Heating and Air Conditioning
1810 Wilson Parkway
Fayetteville, TN 37334
931-438-3632-Telephone
931-438-2922-Facsimile

Index

Functional Parts List	4 - 5
Illustration and Parts	6 - 19

Views shown are for parts illustrations only, not servicing procedures.

Text Codes:

AR - As Required

NA - Not Available

NS - Not Shown

00000000 - See Note

QTY - Quantity Example (QTY 3) (If Quantity not shown, Quantity = 1)

M - Model Example (M1) (If M Code not shown, then part is used on all Models)

Expanded Model and Color Nomenclature:

Example	
M1 - Model#1	P _____
M2 - Model#2	P _____
M3 - Model#3	P _____

Functional Parts

Part

No: Description:

D6789051	CAPACITOR (M7, M13, M14, M15)
D6789025	CAPACITOR-METAL (M4, M25, M26, M27)
D6789049	CAPACITOR-POLY (M8, M16, M17, M18)
D6789054	CAPACITOR-ROUND (M5, M6, M9, M10, M11, M12, M28)
D6789060	CAPACITOR-ROUND (M3, M23, M24)
D6789063	CAPACITOR-ROUND (M1, M2, M19, M20, M21, M22)
D6926116	COMP 2K21S3R236A-7A (M8, M16, M17, M18)
D6926117	COMP-PN 2K21S3R276A (M4, M25, M26, M27)
D6985807	COMP-PN 2P17S3R236A (M7, M13, M14, M15)
D6985810	COMP-PN 2P17S3R276A (M3, M23, M24)
D6887709	COMP-PN 2R10S3R236A (M5, M9, M10)
D6887710	COMP-PN 2R10S3R276A (M1, M19, M20)
D6887711	COMP-PN 2R13S3R236A (M6, M11, M12, M28)
D6887712	COMP-PN 2R13S3R276A (M2, M21, M22)
20007504	COND ASSY (M3, M4, M7, M8, M13, M14, M15, M16, M17, M18, M23, M24, M25, M26, M27)
20007702	COND ASSY (M1, M5, M9, M10, M19, M20)
20007503	COND ASSY (M2, M6, M11, M12, M21, M22, M28)
11114401	CORD-250V 15A (M9, M10, M11, M12, M13, M14, M15, M16, M17, M18)
11114501	CORD-250V 20A (M5, M6, M7, M8)
11114601	CORD-250V 30A (M28)
11114801	CORD-277V 30A (M27)
11114701	CORD-277V-20A (M1, M2, M3, M4, M19, M20, M21, M22, M23, M24, M25, M26)
11165603	EVAP ASSY (M3, M4, M7, M8, M13, M14, M15, M16, M17, M18, M23, M24, M25, M26, M27)
11165703	EVAP ASSY (M2, M6, M11, M12, M21, M22, M28)
11165803	EVAP ASSY (M1, M5, M9, M10, M19, M20)
20284908	FILTER-DRIER (M2, M5, M11, M12, M21, M22, M28)
20284910	FILTER-DRIER (M3, M7, M13, M14, M15, M23, M24)
20284912	FILTER-DRIER (M6, M8, M16, M17, M18, M25, M26, M27)
20284907	FILTER-DRIER (M1, M4, M9, M10, M19, M20)
A3410402	FUSE-15A (M19, M21, M23, M25)
A3410403	FUSE-20A (M1, M2, M3, M4, M20, M22, M24, M26)
A3410404	FUSE-25 AMP (M27)
20252002	HTR 3 2.5KW ASSY (M9, M11, M13, M16)
20252003	HTR 3 3.5KW ASSY (M5, M6, M7, M8, M10, M12, M14, M17)
11177801	HTR 3 5.0 KW ASSY (M28)
20252005	HTR 3 5.0KW ASSY (M15, M18)
20252007	HTR 4 2.5KW ASSY (M19, M21, M23, M25)
20252008	HTR 4 3.7KW ASSY (M1, M2, M3, M4, M20, M22, M24, M26)
20252010	HTR 4 5.0KW ASSY (M27)
11114909	MOTOR-FAN (M7, M8, M13, M14, M15, M16, M17, M18)
11114907	MOTOR-FAN (M5, M6, M9, M10, M11, M12)
11114910	MOTOR-FAN (M3, M4, M23, M24, M25, M26, M27)
11114908	MOTOR-FAN (M1, M2, M19, M20, M21, M22)
11114902	MOTOR-FAN (M28)
20295602	PC BOARD
20329802	REV VLV ASSY (M1, M2, M3, M4, M19, M20, M21, M22, M23, M24, M25, M26, M28)
20329801	REV VLV ASSY (M5, M6, M7, M8, M9, M10, M11, M12, M13, M14, M15, M16, M17, M18)
20295704	THERMISTOR
20295701	THERMISTOR
11044101	WHEEL-BLOWER

Functional Parts

Part

No: Description:

SPECIAL PARTS

11113305 MANUAL-OWNERS
RP4220027 PARTS MANUAL
RS4200003 SERVICE MANUAL
20286101 WARRANTY

Expanded Model and Color Nomenclature

M1 - NTP07A35C4B	P1232845R
M2 - NTP09A35C4B	P1232848R
M3 - NTP12A35C4B	P1232851R
M4 - NTP15A35C4B	P1232855R
M5 - NTP07A35C3B	P1232831R
M6 - NTP09A35C3B	P1232834R
M7 - NTP12A35C3B	P1232837R
M8 - NTP15A35C3B	P1232841R
M9 - NTP07A25A3B	P1232829R
M10 - NTP07A35A3B	P1232830R
M11 - NTP09A25A3B	P1232832R
M12 - NTP09A35A3B	P1232833R
M13 - NTP12A25A3B	P1232835R
M14 - NTP12A35A3B	P1232836R
M15 - NTP12A50A3B	P1232838R
M16 - NTP15A25A3B	P1232839R
M17 - NTP15A35A3B	P1232840R
M18 - NTP15A50A3B	P1232842R
M19 - NTP07A25A4B	P1232843R
M20 - NTP07A35A4B	P1232844R
M21 - NTP09A25A4B	P1232846R
M22 - NTP09A35A4B	P1232847R
M23 - NTP12A25A4B	P1232849R
M24 - NTP12A35A4B	P1232850R
M25 - NTP15A25A4B	P1232853R
M26 - NTP15A35A4B	P1232854R
M27 - NTP15A50A4B	P1232856R
M28 - NTP09A50A3B	P1232857R

Front/Chassis

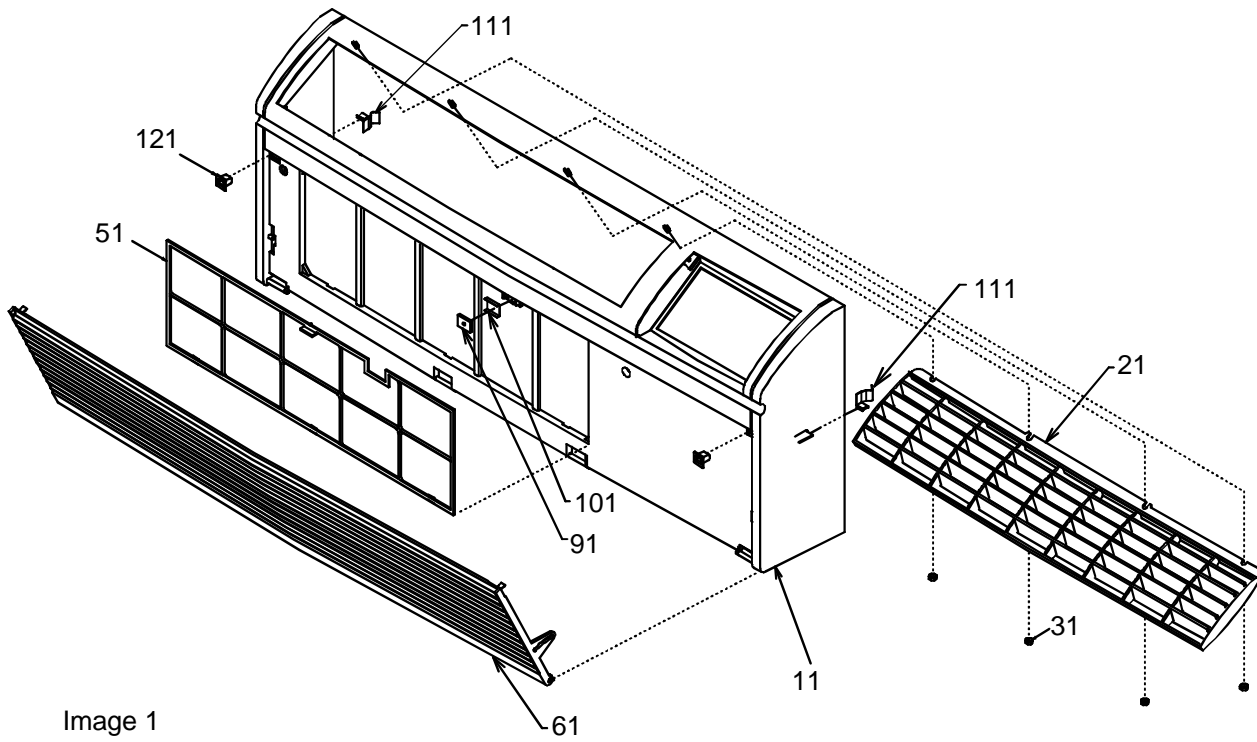
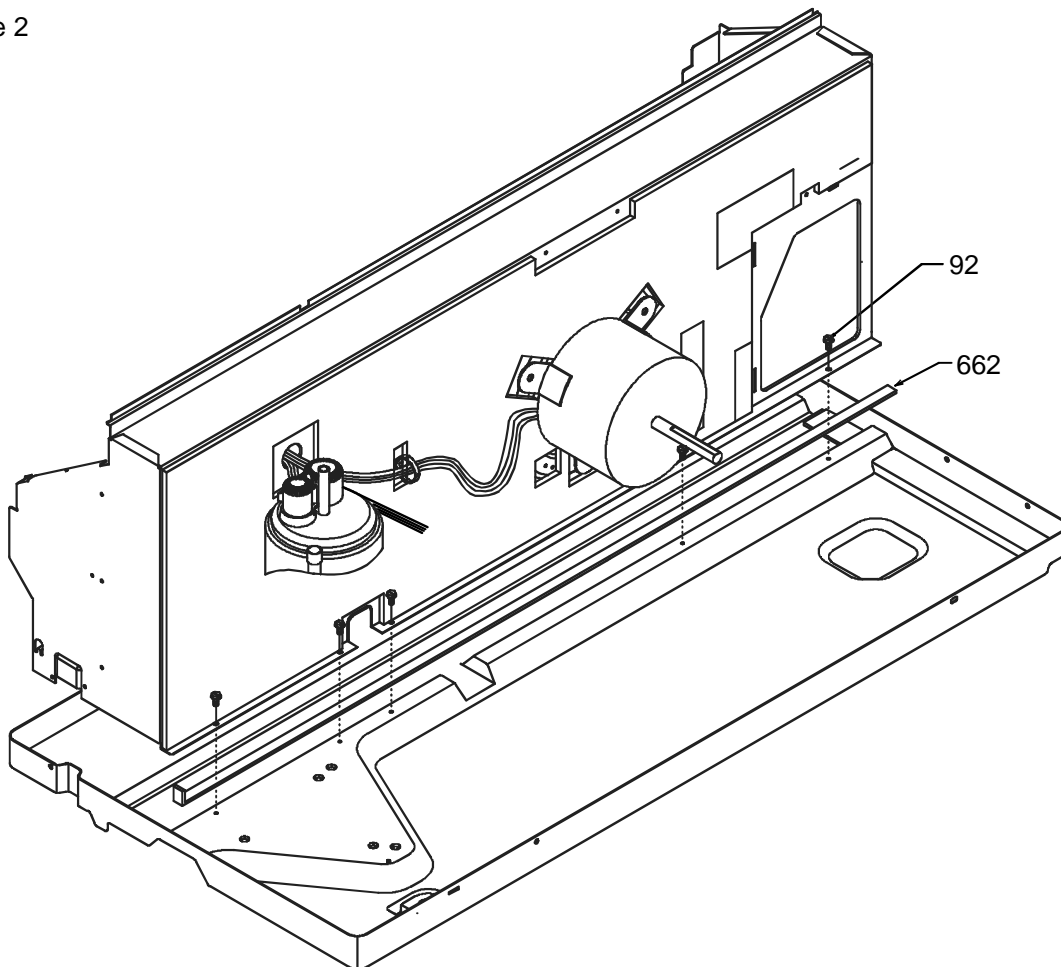


Image 1

Image 2



Front/Chassis

Ref. Part No:	Part No:	Description:	Ref. Part No:	Part No:	Description:
---------------	----------	--------------	---------------	----------	--------------

Image 1:

11	11042701A	FRONT
21	11167401	GRILLE-DISCHARGE
31	M0293604	PALNUT (QTY 4)
51	11045201	FILTER
61	20282501	GRILLE ASSY
91	11047301	MAGNET
101	11047201	HOLDER-MAGNET
111	11045102	CLIP-SIDE (QTY 2)
121	10690002	DOOR CATCH ASSY (QTY 2)

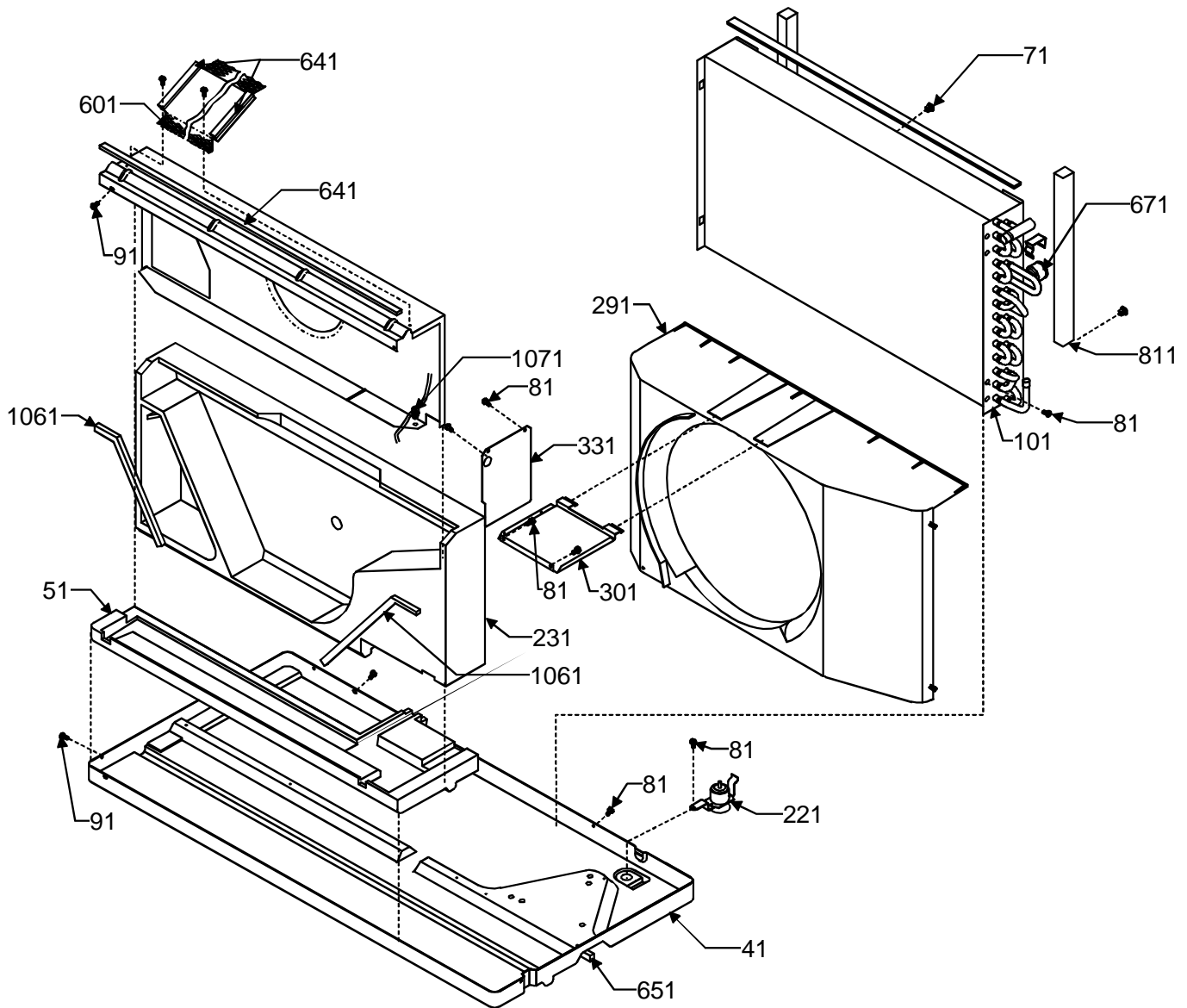
Image 2:

92	M0216716	SCREW-SM (QTY AR)
662	10839823	GASKET-.12X.50X41

Expanded Model and Color Nomenclature

M1 - NTP07A35C4B	P1232845R
M2 - NTP09A35C4B	P1232848R
M3 - NTP12A35C4B	P1232851R
M4 - NTP15A35C4B	P1232855R
M5 - NTP07A35C3B	P1232831R
M6 - NTP09A35C3B	P1232834R
M7 - NTP12A35C3B	P1232837R
M8 - NTP15A35C3B	P1232841R
M9 - NTP07A25A3B	P1232829R
M10 - NTP07A35A3B	P1232830R
M11 - NTP09A25A3B	P1232832R
M12 - NTP09A35A3B	P1232833R
M13 - NTP12A25A3B	P1232835R
M14 - NTP12A35A3B	P1232836R
M15 - NTP12A50A3B	P1232838R
M16 - NTP15A25A3B	P1232839R
M17 - NTP15A35A3B	P1232840R
M18 - NTP15A50A3B	P1232842R
M19 - NTP07A25A4B	P1232843R
M20 - NTP07A35A4B	P1232844R
M21 - NTP09A25A4B	P1232846R
M22 - NTP09A35A4B	P1232847R
M23 - NTP12A25A4B	P1232849R
M24 - NTP12A35A4B	P1232850R
M25 - NTP15A25A4B	P1232853R
M26 - NTP15A35A4B	P1232854R
M27 - NTP15A50A4B	P1232856R
M28 - NTP09A50A3B	P1232857R

Chassis



Chassis

Ref. Part No: No:	Description:	Ref. Part No: No:	Description:
-------------------	--------------	-------------------	--------------

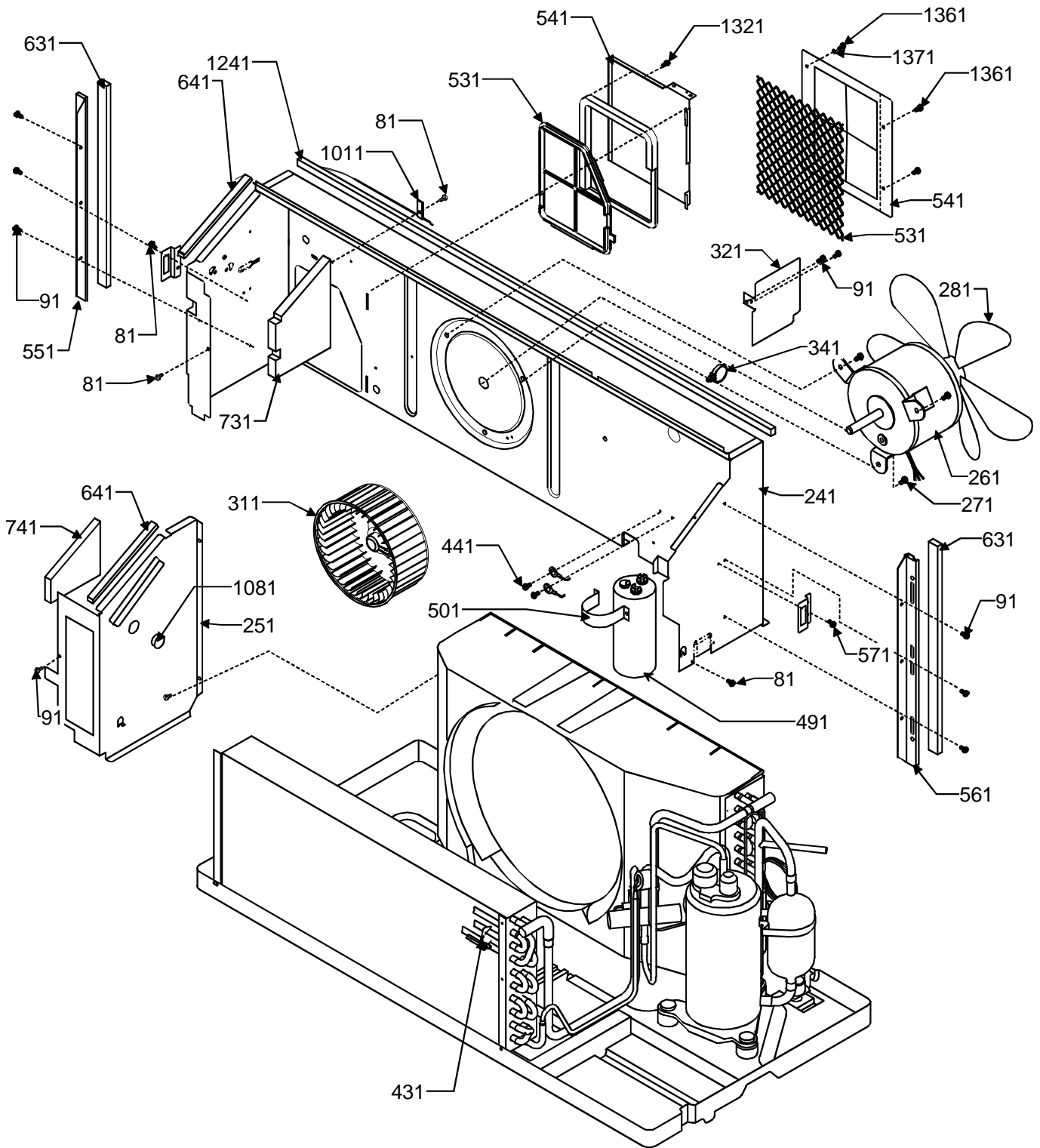
Image 1:

41	11042510	BASEPAN-PNT (M9, M10, M11, M12, M13, M14, M15, M16, M17, M18, M19, M20, M21, M22, M23, M24, M25, M26, M27, M28)
41	11042511	BASEPAN-PNT (M1, M2, M3, M4, M5, M6, M7, M8)
51	11044702	PAD-EVAP
71	A3315701	GROMMET (QTY 4)
81	M0211216	SCREW-SM (QTY AR)
91	M0216716	SCREW-SM (QTY AR)
101	20007503	COND ASSY (M2, M6, M11, M12, M21, M22, M28)
101	20007504	COND ASSY (M3, M4, M7, M8, M13, M14, M15, M16, M17, M18, M23, M24, M25, M26, M27)
101	20007702	COND ASSY (M1, M5, M9, M10, M19, M20)
221	11043402	VALVE-DRAIN PAN
231	11045802	SCROLL-BLOWER
291	11167301	SHROUD-COND
301	11044201	BRACE-TIE
331	11046502	BAFFLE-PNT TOP (M1, M2, M3, M4, M5, M6, M7, M8)
331	11046501	BAFFLE-TOP (M9, M10, M11, M12, M13, M14, M15, M16, M17, M18, M19, M20, M21, M22, M23, M24, M25, M26, M27, M28)
601	11123904	SCREEN-PNT DISCH
641	10839705	GASKET .50X.25 (QTY AR)
651	10839808	GASKET-.37X.50 (QTY AR)
671	20295701	OUTDOOR THERMISTOR
811	10839712	GASKET .62X.75 (QTY AR)
1051	11167602	COVER-ACCESS
1061	10839706	GASKET .50X.50 (QTY AR)
1071	M0120801	CLIP-GUIDE

Expanded Model and Color Nomenclature

M1 - NTP07A35C4B	P1232845R
M2 - NTP09A35C4B	P1232848R
M3 - NTP12A35C4B	P1232851R
M4 - NTP15A35C4B	P1232855R
M5 - NTP07A35C3B	P1232831R
M6 - NTP09A35C3B	P1232834R
M7 - NTP12A35C3B	P1232837R
M8 - NTP15A35C3B	P1232841R
M9 - NTP07A25A3B	P1232829R
M10 - NTP07A35A3B	P1232830R
M11 - NTP09A25A3B	P1232832R
M12 - NTP09A35A3B	P1232833R
M13 - NTP12A25A3B	P1232835R
M14 - NTP12A35A3B	P1232836R
M15 - NTP12A50A3B	P1232838R
M16 - NTP15A25A3B	P1232839R
M17 - NTP15A35A3B	P1232840R
M18 - NTP15A50A3B	P1232842R
M19 - NTP07A25A4B	P1232843R
M20 - NTP07A35A4B	P1232844R
M21 - NTP09A25A4B	P1232846R
M22 - NTP09A35A4B	P1232847R
M23 - NTP12A25A4B	P1232849R
M24 - NTP12A35A4B	P1232850R
M25 - NTP15A25A4B	P1232853R
M26 - NTP15A35A4B	P1232854R
M27 - NTP15A50A4B	P1232856R
M28 - NTP09A50A3B	P1232857R

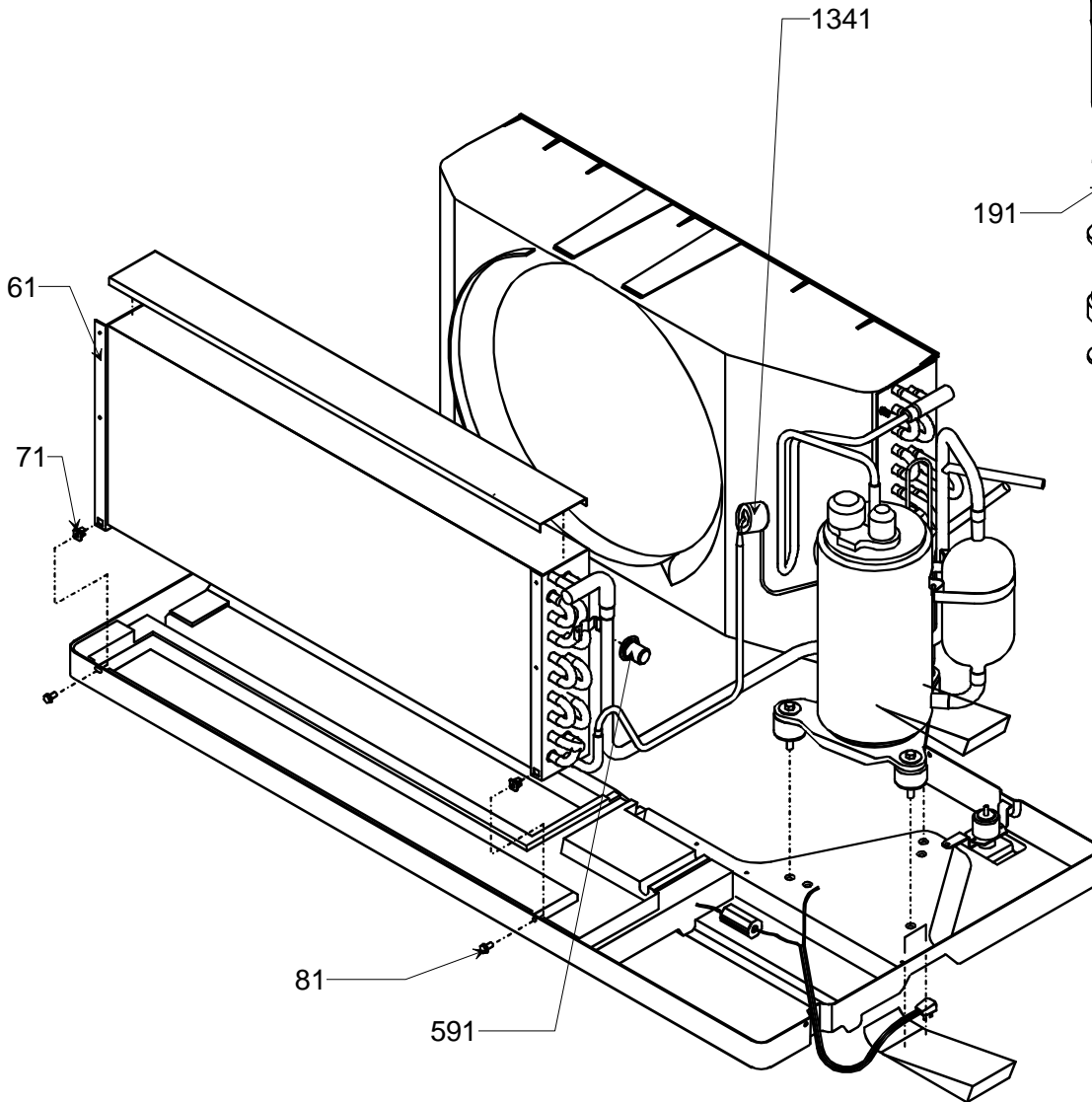
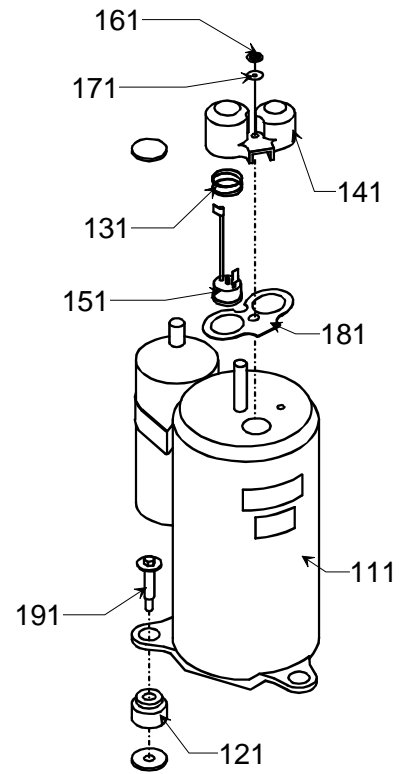
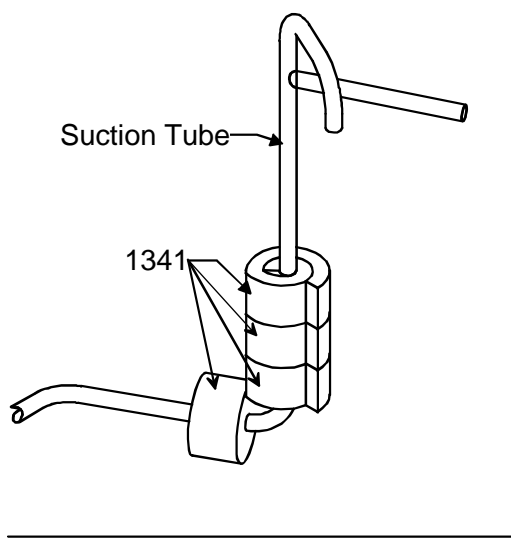
Chassis



Chassis

Ref. Part No:	Part No:	Description:	Ref. Part No:	Part No:	Description:
<i>Image 1:</i>			Expanded Model and Color Nomenclature		
81	M0211216	SCREW-SM (QTY AR)	M1 - NTP07A35C4B		P1232845R
91	M0216716	SCREW-SM (QTY AR)	M2 - NTP09A35C4B		P1232848R
241	11045509	PANEL-PTN PNT (M1, M2, M3, M4, M5, M6, M7, M8)	M3 - NTP12A35C4B		P1232851R
251	11167504	PANEL-MID PART	M4 - NTP15A35C4B		P1232855R
261	11114902	MOTOR-FAN (M28)	M5 - NTP07A35C3B		P1232831R
261	11114907	MOTOR-FAN (M5, M6, M9, M10, M11, M12)	M6 - NTP09A35C3B		P1232834R
261	11114908	MOTOR-FAN (M1, M2, M19, M20, M21, M22)	M7 - NTP12A35C3B		P1232837R
261	11114909	MOTOR-FAN (M7, M8, M13, M14, M15, M16, M17, M18)	M8 - NTP15A35C3B		P1232841R
261	11114910	MOTOR-FAN (M3, M4, M23, M24, M25, M26, M27)	M9 - NTP07A25A3B		P1232829R
271	M0224956	SCREW-TAP R (QTY 3)	M10 - NTP07A35A3B		P1232830R
281	20046501	FAN-PL. COND.	M11 - NTP09A25A3B		P1232832R
311	11044101	WHEEL-BLOWER	M12 - NTP09A35A3B		P1232833R
321	20245401	BAFFLE-COND INLT	M13 - NTP12A25A3B		P1232835R
341	M0118702	CLIP-GUIDE	M14 - NTP12A35A3B		P1232836R
431	20075601	CLIP-T'STAT (QTY 2)	M15 - NTP12A50A3B		P1232838R
441	M0227803	SCREW-TC (QTY 2)	M16 - NTP15A25A3B		P1232839R
491	D6789051	CAPACITOR (M7, M13, M14, M15)	M17 - NTP15A35A3B		P1232840R
491	D6789025	CAPACITOR-METAL (M4, M25, M26, M27)	M18 - NTP15A50A3B		P1232842R
491	D6789049	CAPACITOR-POLY (M8, M16, M17, M18)	M19 - NTP07A25A4B		P1232843R
491	D6789054	CAPACITOR-ROUND (M5, M6, M9, M10, M11, M12, M28)	M20 - NTP07A35A4B		P1232844R
491	D6789060	CAPACITOR-ROUND (M3, M23, M24)	M21 - NTP09A25A4B		P1232846R
491	D6789063	CAPACITOR-ROUND (M1, M2, M19, M20, M21, M22)	M22 - NTP09A35A4B		P1232847R
501	C6300502	STRAP-CAP CO (M1, M2, M3, M5, M6, M7, M8, M9, M10, M11, M12, M13, M14, M15, M16, M17, M18, M19, M20, M21, M22, M23, M24, M28)	M23 - NTP12A25A4B		P1232849R
501	C6300503	STRAP-CAP CO (M4, M25, M26, M27)	M24 - NTP12A35A4B		P1232850R
531	20304002	SHIELD-PNT PROT (M1, M2, M3, M4, M5, M6, M7, M8)	M25 - NTP15A25A4B		P1232853R
541	20295302	DOOR-PNT IOP VNT (M1, M2, M3, M4, M5, M6, M7, M8)	M26 - NTP15A35A4B		P1232854R
541	20295301	DOOR-VENT IOP (M9, M10, M11, M12, M13, M14, M15, M16, M17, M18, M19, M20, M21, M22, M23, M24, M25, M26, M27, M28)	M27 - NTP15A50A4B		P1232856R
551	11044902	SEAL-L SIDE	M28 - NTP09A50A3B		P1232857R
561	11044901	SEAL-R SIDE			
571	11191702	BRACKET-PTN PNL (QTY 2)			
631	10839807	GASKET-.37X.75 (QTY AR)			
641	10839705	GASKET .50X.25 (QTY AR)			
731	11122901	INSUL-LEFT			
741	11123001	INSUL-RIGHT			
1011	M0108103	CLAMP-TUBE			
1081	A4554801	BUSHING-SNAP			
1241	10839814	GASKET-.50X.50 (QTY AR)			
1321	M0238833	SCREW-SHLDR			
1361	M0211016	SCREW-SM #8-3/8LG (QTY 4)			
1371	M0270544	WASHER-FLAT (QTY 2)			

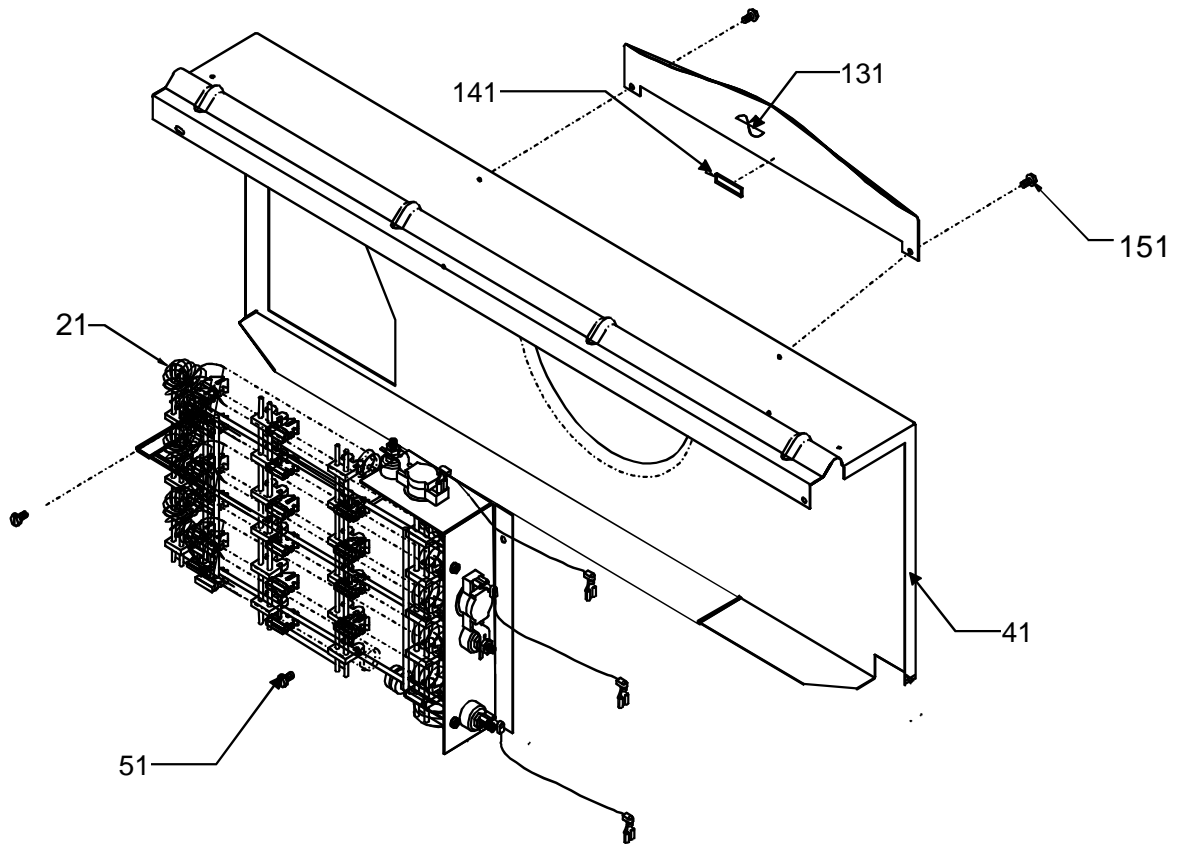
Compressor/Tubing



Compressor/Tubing

Ref. Part No:	No:	Description:	Ref. Part No:	No:	Description:
<i>Image 1:</i>			Expanded Model and Color Nomenclature		
31	20042003	TUBE-SUCTION (M1, M5, M9, M10, M19, M20)	M1 - NTP07A35C4B		P1232845R
31	20210802	TUBE-SUCTION	M2 - NTP09A35C4B		P1232848R
31	20042203	TUBE-SUCTION SRV (M2, M6, M11, M12, M21, M22, M28)	M3 - NTP12A35C4B		P1232851R
61	11165603	EVAP ASSY (M3, M4, M7, M8, M13, M14, M15, M16, M17, M18, M23, M24, M25, M26, M27)	M4 - NTP15A35C4B		P1232855R
61	11165703	EVAP ASSY (M2, M6, M11, M12, M21, M22, M28)	M5 - NTP07A35C3B		P1232831R
61	11165803	EVAP ASSY (M1, M5, M9, M10, M19, M20)	M6 - NTP09A35C3B		P1232834R
71	A3315701	GROMMET (M1, M2, M3, M4)	M7 - NTP12A35C3B		P1232837R
81	M0211216	SCREW-SM (QTY AR)	M8 - NTP15A35C3B		P1232841R
111	D6926116	COMP 2K21S3R236A-7A (M8, M16, M17, M18)	M9 - NTP07A25A3B		P1232829R
111	D6926117	COMP-PN 2K21S3R276A (M4, M25, M26, M27)	M10 - NTP07A35A3B		P1232830R
111	D6985807	COMP-PN 2P17S3R236A (M7, M13, M14, M15)	M11 - NTP09A25A3B		P1232832R
111	D6985810	COMP-PN 2P17S3R276A (M3, M23, M24)	M12 - NTP09A35A3B		P1232833R
111	D6887709	COMP-PN 2R10S3R236A (M5, M9, M10)	M13 - NTP12A25A3B		P1232835R
111	D6887710	COMP-PN 2R10S3R276A (M1, M19, M20)	M14 - NTP12A35A3B		P1232836R
111	D6887711	COMP-PN 2R13S3R236A (M6, M11, M12, M28)	M15 - NTP12A50A3B		P1232838R
111	D6887712	COMP-PN 2R13S3R276A (M2, M21, M22)	M16 - NTP15A25A3B		P1232839R
121	A4622801	GROMMET (M1, M2, M5, M6, M9, M10, M11, M12, M19, M20, M21, M22, M28)	M17 - NTP15A35A3B		P1232840R
131	A3436901	SPRING-OVERLOAD	M18 - NTP15A50A3B		P1232842R
141	20120102	COVER-TERM	M19 - NTP07A25A4B		P1232843R
151	D6961607	OVERLOAD (M8, M16, M17, M18)	M20 - NTP07A35A4B		P1232844R
151	D6961612	OVERLOAD (M7, M13, M14, M15)	M21 - NTP09A25A4B		P1232846R
151	D6961636	OVERLOAD (M5, M9, M10)	M22 - NTP09A35A4B		P1232847R
151	D6961637	OVERLOAD (M1, M19, M20)	M23 - NTP12A25A4B		P1232849R
151	D6961639	OVERLOAD (M6, M11, M12, M28)	M24 - NTP12A35A4B		P1232850R
151	D6961642	OVERLOAD (M2, M21, M22)	M25 - NTP15A25A4B		P1232853R
151	D6961643	OVERLOAD (M3, M23, M24)	M26 - NTP15A35A4B		P1232854R
151	D6961657	OVERLOAD (M4, M25, M26, M27)	M27 - NTP15A50A4B		P1232856R
161	A3436601	NUT-TERM COVER	M28 - NTP09A50A3B		P1232857R
171	A3436801	GASKET-NUT			
181	A3436701	GASKET-TERM COVER			
191	M0253610	SCREW-SHLDR (M3, M4, M7, M8, M13, M14, M15, M16, M17, M18, M23, M24, M25, M26, M27)			
191	M0253661	SCREW-SHLDR (M1, M2, M5, M6, M9, M10, M11, M12, M19, M20, M21, M22, M28)			
591	20295701	OUTDOOR THERMISTOR			
1341	11154803	SEALER-RUBBER BASED			

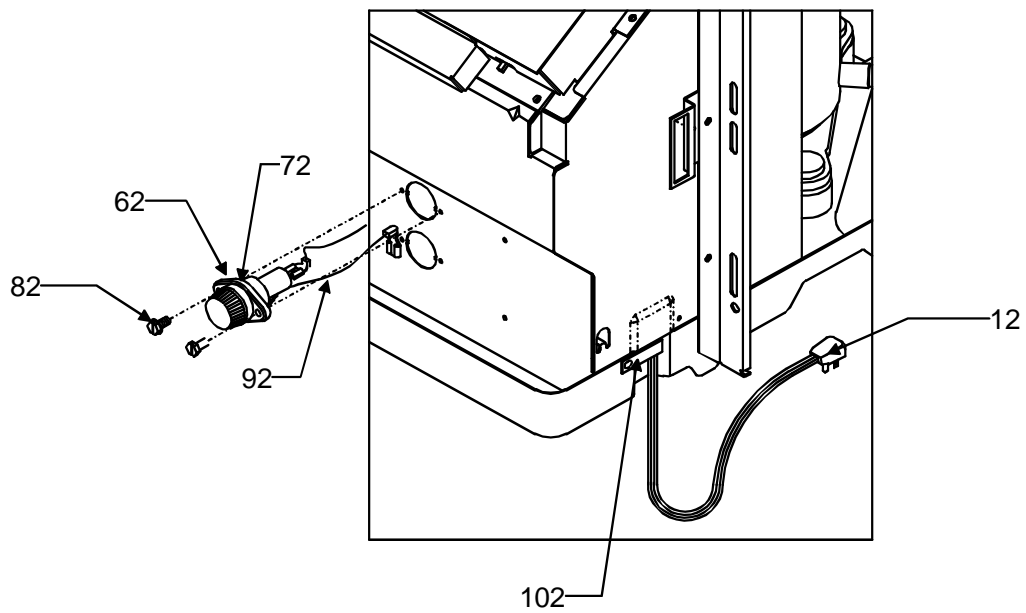
Heater



2 STAGE HEAT

Image 1

Image 2



Heater

Ref. Part No: No:	Description:	Ref. Part No: No:	Description:
-------------------	--------------	-------------------	--------------

Image 1:

21	20252002	HTR 3 2.5KW ASSY (M9, M11, M13, M16)
21	20252003	HTR 3 3.5KW ASSY (M5, M6, M7, M8, M10, M12, M14, M17)
21	11177801	HTR 3 5.0 KW ASSY (M28)
21	20252005	HTR 3 5.0KW ASSY (M15, M18)
21	20252007	HTR 4 2.5KW ASSY (M19, M21, M23, M25)
21	20252008	HTR 4 3.7KW ASSY (M1, M2, M3, M4, M20, M22, M24, M26)
21	20252010	HTR 4 5.0KW ASSY (M27)
41	11044304	BLOWER-INT PNT
51	M0216716	SCREW-SM (QTY 2)
131	11043902	BLOWER-INT PNT
141	10839722	GASKET .25X.06
151	M0216716	SCREW-SM (QTY 2)

Image 2:

12	11114401	CORD-250V 15A (M9, M10, M11, M12, M13, M14, M15, M16, M17, M18)
12	11114501	CORD-250V 20A (M5, M6, M7, M8)
12	11114601	CORD-250V 30A (M28)
12	11114801	CORD-277V 30A (M27)
12	11114701	CORD-277V-20A (M1, M2, M3, M4, M19, M20, M21, M22, M23, M24, M25, M26)
62	C6476001	HOLDER-BAYONET FUSE (M19, M21, M23, M25)
62	C6476002	HOLDER-BAYONET FUSE (M1, M2, M3, M4, M20, M22, M24, M26)
62	C6476003	HOLDER-BAYONET FUSE* (M27)
72	A3410402	FUSE-15A (M19, M21, M23, M25)
72	A3410403	FUSE-20A (M1, M2, M3, M4, M20, M22, M24, M26)
72	A3410404	FUSE-25 AMP (M27)
82	M0213817	SCREW-SM (M1, M2, M3, M4, M19, M20, M21, M22, M23, M24, M25, M26, M27)
92	10618850	WIRE-JUMPER BK18 (M1, M2, M3, M4, M19, M20, M21, M22, M23, M24, M25, M26, M27)
102	M0103905	CLAMP-SPEED (M9, M11, M13, M16)
102	M0103906	CLAMP-SPEED (M1, M2, M3, M4, M5, M6, M7, M8, M10, M12, M14, M15, M17, M18)

Expanded Model and Color Nomenclature

M1 - NTP07A35C4B	P1232845R
M2 - NTP09A35C4B	P1232848R
M3 - NTP12A35C4B	P1232851R
M4 - NTP15A35C4B	P1232855R
M5 - NTP07A35C3B	P1232831R
M6 - NTP09A35C3B	P1232834R
M7 - NTP12A35C3B	P1232837R
M8 - NTP15A35C3B	P1232841R
M9 - NTP07A25A3B	P1232829R
M10 - NTP07A35A3B	P1232830R
M11 - NTP09A25A3B	P1232832R
M12 - NTP09A35A3B	P1232833R
M13 - NTP12A25A3B	P1232835R
M14 - NTP12A35A3B	P1232836R
M15 - NTP12A50A3B	P1232838R
M16 - NTP15A25A3B	P1232839R
M17 - NTP15A35A3B	P1232840R
M18 - NTP15A50A3B	P1232842R
M19 - NTP07A25A4B	P1232843R
M20 - NTP07A35A4B	P1232844R
M21 - NTP09A25A4B	P1232846R
M22 - NTP09A35A4B	P1232847R
M23 - NTP12A25A4B	P1232849R
M24 - NTP12A35A4B	P1232850R
M25 - NTP15A25A4B	P1232853R
M26 - NTP15A35A4B	P1232854R
M27 - NTP15A50A4B	P1232856R
M28 - NTP09A50A3B	P1232857R

Control Panel

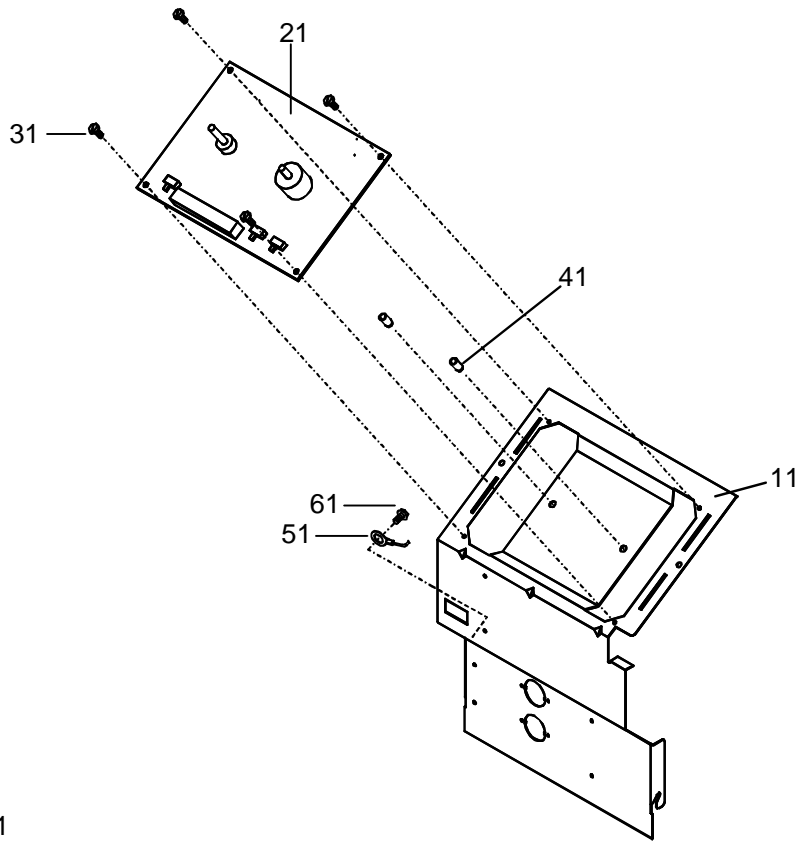
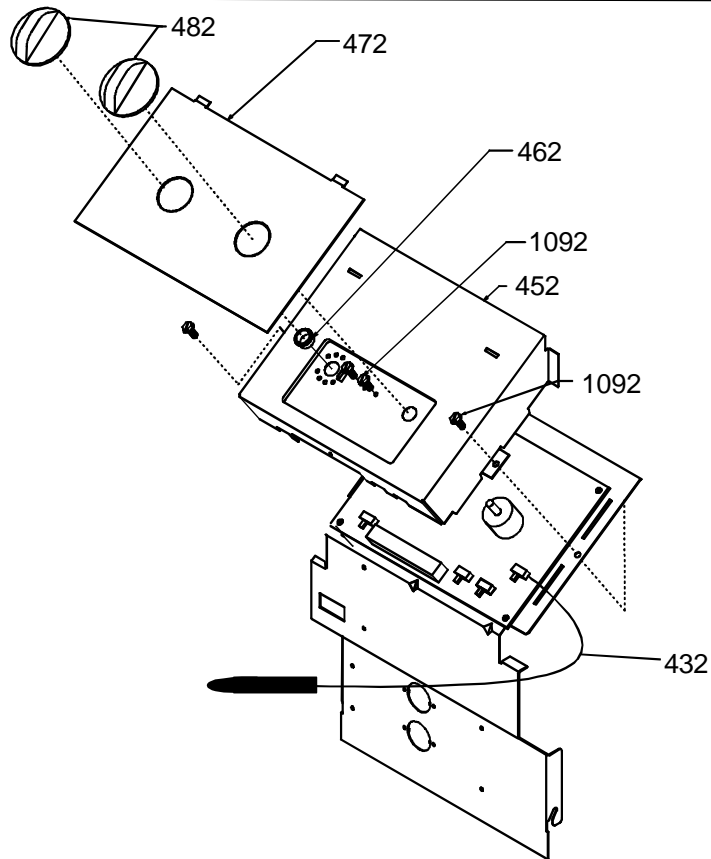


Image 1

Image 2



Control Panel

Ref. Part No:	Part No:	Description:	Ref. Part No:	Part No:	Description:
---------------	----------	--------------	---------------	----------	--------------

Image 1:

11	11044504	PANEL-CONTROL
21	20295602	PC BOARD
31	M0216529	SCREW-SM (QTY 4)
41	M0590702	SUPPORT (QTY 2)
51	10618849	WIRE-JUMPER GN1
61	M0227803	SCREW-TC
9991	C8873917	RELAY (M28)

Image 2:

432	20295701	THERMISTOR
452	11044403	COVER-CONT PNL
462	M0117902	CLIP-TUBULAR
472	20005701	PLATE-ESC
482	11042902	KNOB-CONTROL (QTY 2)
1092	M0216529	SCREW-SM (QTY 4)

Expanded Model and Color Nomenclature

M1 - NTP07A35C4B	P1232845R
M2 - NTP09A35C4B	P1232848R
M3 - NTP12A35C4B	P1232851R
M4 - NTP15A35C4B	P1232855R
M5 - NTP07A35C3B	P1232831R
M6 - NTP09A35C3B	P1232834R
M7 - NTP12A35C3B	P1232837R
M8 - NTP15A35C3B	P1232841R
M9 - NTP07A25A3B	P1232829R
M10 - NTP07A35A3B	P1232830R
M11 - NTP09A25A3B	P1232832R
M12 - NTP09A35A3B	P1232833R
M13 - NTP12A25A3B	P1232835R
M14 - NTP12A35A3B	P1232836R
M15 - NTP12A50A3B	P1232838R
M16 - NTP15A25A3B	P1232839R
M17 - NTP15A35A3B	P1232840R
M18 - NTP15A50A3B	P1232842R
M19 - NTP07A25A4B	P1232843R
M20 - NTP07A35A4B	P1232844R
M21 - NTP09A25A4B	P1232846R
M22 - NTP09A35A4B	P1232847R
M23 - NTP12A25A4B	P1232849R
M24 - NTP12A35A4B	P1232850R
M25 - NTP15A25A4B	P1232853R
M26 - NTP15A35A4B	P1232854R
M27 - NTP15A50A4B	P1232856R
M28 - NTP09A50A3B	P1232857R

Filter-Drier

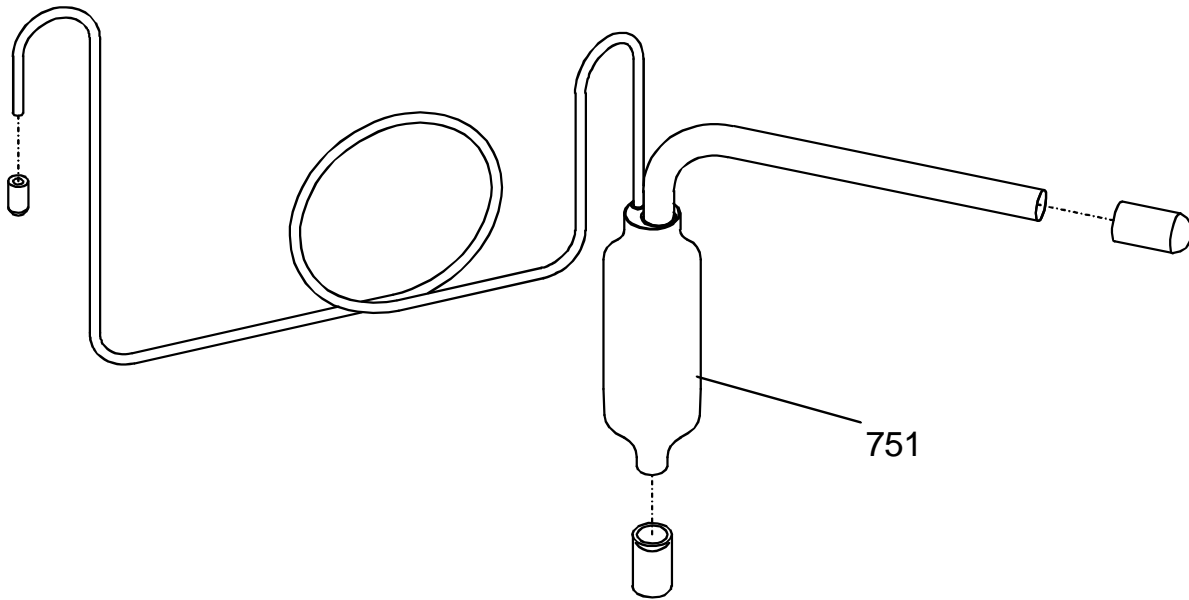
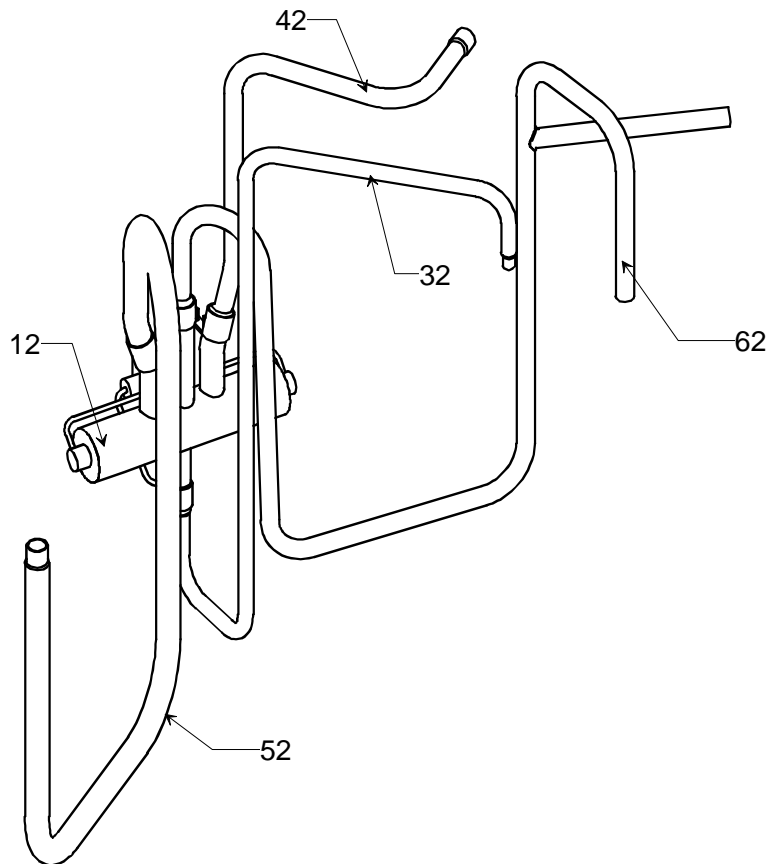


Image 1

Image 2



Filter-Drier

Ref. Part No:	Part No:	Description:	Ref. Part No:	Part No:	Description:
---------------	----------	--------------	---------------	----------	--------------

Image 1:

751	20284907	FILTER-DRIER (M1, M4, M9, M10, M19, M20)
751	20284908	FILTER-DRIER (M2, M5, M11, M12, M21, M22, M28)
751	20284910	FILTER-DRIER (M3, M7, M13, M14, M15, M23, M24)
751	20284912	FILTER-DRIER (M6, M8, M16, M17, M18, M25, M26, M27)

Image 2:

12	20329801	REV VLV ASSY (M5, M6, M7, M8, M9, M10, M11, M12, M13, M14, M15, M16, M17, M18)
12	20329802	REV VLV ASSY (M1, M2, M3, M4, M19, M20, M21, M22, M23, M24, M25, M26, M28)
32	11116902	TUBE-DISCH (M2, M6, M11, M12, M21, M22, M28)
32	11177902	TUBE-DISCH (M3, M4, M7, M8, M13, M14, M15, M16, M17, M18, M23, M24, M25, M26, M27)
32	11192202	TUBE-DISCH (M1, M5, M9, M10, M19, M20)
42	20329201	TUBE-COND (M1, M5, M9, M10, M19, M20)
42	20329202	TUBE-COND (M1, M2, M5, M6, M9, M10, M11, M12, M19, M20, M21, M22)
42	20329301	TUBE-COND (M3, M4, M7, M8, M13, M14, M15, M16, M17, M18, M23, M24, M25, M26, M27)
52	20329101	TUBE-EVAP (M1, M5, M9, M10, M19, M20)
52	20329102	TUBE-EVAP
62	11192703	TUBE WELD-SUCT (M2, M3, M4, M6, M7, M8, M11, M12, M13, M14, M15, M16, M17, M18, M21, M22, M23, M24, M25, M26, M27, M28)
62	20042103	TUBE WELD-SUCT (M1, M5, M9, M10, M19, M20)
62	20042303	TUBE WELD-SUCT (M1, M5, M9, M10, M19, M20)

Expanded Model and Color Nomenclature

M1 - NTP07A35C4B	P1232845R
M2 - NTP09A35C4B	P1232848R
M3 - NTP12A35C4B	P1232851R
M4 - NTP15A35C4B	P1232855R
M5 - NTP07A35C3B	P1232831R
M6 - NTP09A35C3B	P1232834R
M7 - NTP12A35C3B	P1232837R
M8 - NTP15A35C3B	P1232841R
M9 - NTP07A25A3B	P1232829R
M10 - NTP07A35A3B	P1232830R
M11 - NTP09A25A3B	P1232832R
M12 - NTP09A35A3B	P1232833R
M13 - NTP12A25A3B	P1232835R
M14 - NTP12A35A3B	P1232836R
M15 - NTP12A50A3B	P1232838R
M16 - NTP15A25A3B	P1232839R
M17 - NTP15A35A3B	P1232840R
M18 - NTP15A50A3B	P1232842R
M19 - NTP07A25A4B	P1232843R
M20 - NTP07A35A4B	P1232844R
M21 - NTP09A25A4B	P1232846R
M22 - NTP09A35A4B	P1232847R
M23 - NTP12A25A4B	P1232849R
M24 - NTP12A35A4B	P1232850R
M25 - NTP15A25A4B	P1232853R
M26 - NTP15A35A4B	P1232854R
M27 - NTP15A50A4B	P1232856R
M28 - NTP09A50A3B	P1232857R