

# Service Parts

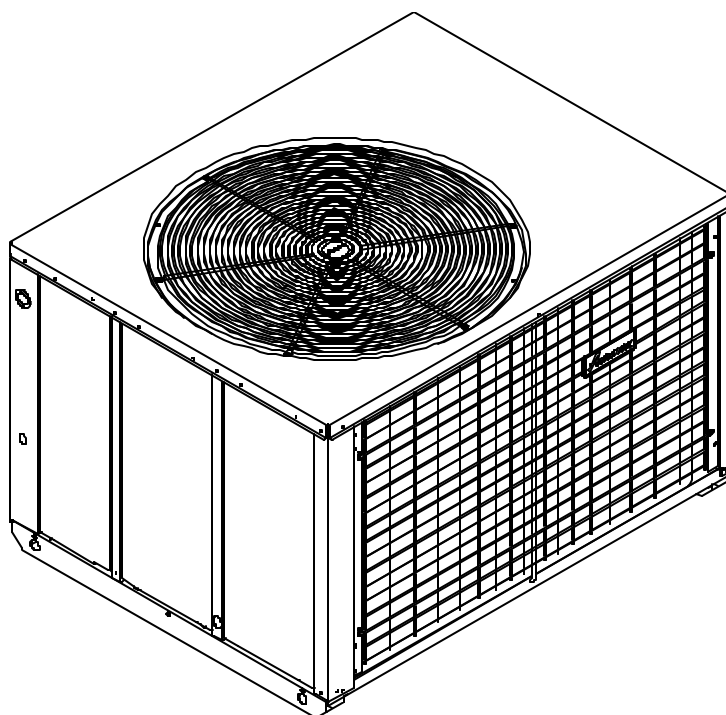
## PCC Series Package Units

This manual replaces RP6340012.

This manual is to be used by qualified appliance technicians only.

Models and manufacturing numbers in this manual

PCC24C02E	P1231101C
PCC24C02F	P1231107C
PCC30C02E	P1231102C
PCC30C02F	P1231108C
PCC36C02E	P1231103C
PCC36C02F	P1231109C
PCC42C02E	P1231104C
PCC42C02F	P1231110C
PCC48C02E	P1231105C
PCC48C02F	P1231111C
PCC60C02E	P1231106C
PCC60C02F	P1231112C



**Heating & Air Conditioning**  
**Amana**  
LASTS AND LASTS AND LASTS.™

Amana is a trademark of Maytag Corporation and used under license to Goodman Company, L.P. All rights reserved.

RP6340012  
Revision 1  
November 2004

Copyright © 2004 Goodman Company, L.P.

## Important Information

---

Goodman Company, L.P. is not responsible for personal injury or property damage resulting from improper service. Review all service information before beginning repairs.

Warranty service must be performed by an authorized technician, using authorized factory parts. If service is required after the warranty expires, Goodman Company, L.P. also recommends contacting an authorized technician and using authorized factory parts.

For assistance within the U.S.A. contact:

Consumer Affairs Department  
Goodman Company, L.P.  
7401 Security Way  
Houston, Texas 77040  
877-254-4729-Telephone  
713-863-2382-Facsimile

For assistance outside the U.S.A. contact:

International Division  
Goodman Company, L.P.  
7401 Security Way  
Houston, Texas 77040  
713-861-2500-Telephone  
713-863-2382-Facsimile

# Index

Functional Parts List .....	4 - 5
Illustration and Parts .....	6 - 17

*Views shown are for parts illustrations only, not servicing procedures.*

Revision 1: Adds MFG # P1231107C, P1231108C, P1231109C, P1231110C, P1231111C, and P1231112C.

## Text Codes:

AR - As Required

NA - Not Available

NS - Not Shown

00000000 - See Note

QTY - Quantity Example (QTY 3) (If Quantity not shown, Quantity = 1)

M - Model Example (M1) (If M Code not shown, then part is used on all Models)

## Expanded Model Nomenclature:

Example	
M1 - Model#1	P _____
M2 - Model#2	P _____
M3 - Model#3	P _____

# Functional Parts

## Part

## No: Description:

---

20158901	BOARD-INTERFACE (M6, M12)
D6879747	CAPACITOR, 10-370 (M1, M2, M3, M7, M8, M9)
D6879739	CAPACITOR, 15-370 (M4, M5, M10, M11)
D6789034	CAPACITOR-METAL, 35/7.5, 440 (M2, M8)
D6789027	CAPACITOR-METAL, 40/7.5, 440 (M4, M10)
D6789041	CAPACITOR-METAL, 60/7.5, 440 (M5, M11)
D6789042	CAPACITOR-METAL, 80/7.5, 440 (M6, M12)
D6789062	CAPACITOR-ROUND, 35/7.5, 3740 (M1, M7)
D6789057	CAPACITOR-ROUND, 40/7.5, 370 (M3, M9)
ZR22KCPFV930	COMPRESSOR, ZR22KC-PFV-230 (M1, M7) OLD PN# 10289221
ZR28KCPFV930	COMPRESSOR, ZR28KC-PFV-230 (M2, M8) OLD PN# 10289222
ZR34KCPFV930	COMPRESSOR, ZR34KC-PFV-230 (M3, M9) OLD PN# 10289223
ZR40KCPFV930	COMPRESSOR, ZR40KC-PFV-230 (M4, M10) OLD PN# 11012513
ZR47K3PFV935	COMPRESSOR, ZR47K3-PFV-235 (M5, M11) OLD PN# 11012512
ZR57K3PFV950	COMPRESSOR, ZR57K3-PFV-250 (M6, M12) OLD PN# 10289208
20253601	CONDENSER ASSY (M1, M2, M7, M8)
20266602	CONDENSER ASSY (M4, M5, M6, M10, M11, M12)
20253901	CONDENSER ASSY (M3, M9)
C6453318	CUTOUT-LOW PRESSURE, CUTOUT 10 PSI, CUT IN, 40 PSI
11067529	DIST ASSY (M6, M12)
11067521	DIST ASSY (M2, M8)
11067528	DIST ASSY (M5, M11)
11067514	DISTRIBUTOR (M1, M7)
11067527	DISTRIBUTOR (M4, M10)
11067512	DISTRIBUTOR (M3, M9)
B1370735	ELECT BLWR TIME DELAY (M1, M2, M3, M4, M5, M7, M8, M9, M10, M11)
20268001	EVAPORATOR ASSY (M4, M10)
20268002	EVAPORATOR ASSY (M5, M11)
20155401	EVAPORATOR ASSY (M3, M9)
20155303	EVAPORATOR ASSY (M1, M7)
20155403	EVAPORATOR ASSY (M2, M8)
20268003	EVAPORATOR ASSY (M6, M12)
11182906	FAN-CONDENSER CW
20001001	HARNESS-BLOWER (M1, M2, M3, M4, M5, M7, M8, M9, M10, M11)
20217003	HARNESS-BLOWER (M6, M12)
20204001	HARNESS-COMP (M6, M12)
20001401	HARNESS-COMP (M1, M2, M3, M7, M8, M9)
20203901	HARNESS-COMP (M4, M5, M10, M11)
20217304	HARNESS-CONTROL (M6, M12)
20016303	HARNESS-CONTROL (M1, M2, M3, M4, M5, M7, M8, M9, M10, M11)
11112806	MOTOR-COND 1/3 HP, 1100 RPM, 208/230 V (M6, M12)
11112805	MOTOR-COND 1/5 HP, 825 RPM, 208/230 V (M1, M2, M3, M4, M5, M7, M8, M9, M10, M11)
20509408	MOTOR-ECM AND END BELL 3/4 HP (M6, M12)
20028601	MOTOR-EVAP 3/4 HP, 1100 RPM (M4, M5, M10, M11)
20013001	MOTOR-EVAP, 1/3 HP, 950 RPM (M1, M2, M3, M7, M8, M9)
20171401	ORIFICE-COND
20510108	PROGRAMED END BELL FOR ECM (M6, M12)
11120302	TRANSFORMER

# Functional Parts

## Part

**No:**            **Description:**

---

D6723302	WHEEL-BLOWER
10382327	WIRE ASSEMBLY (M3, M9)
10382327	WIRE ASSEMBLY (M1, M2, M4, M5, M6, M7, M8, M10, M11, M12)
11118705	WIRING HARNESS (M6, M12)

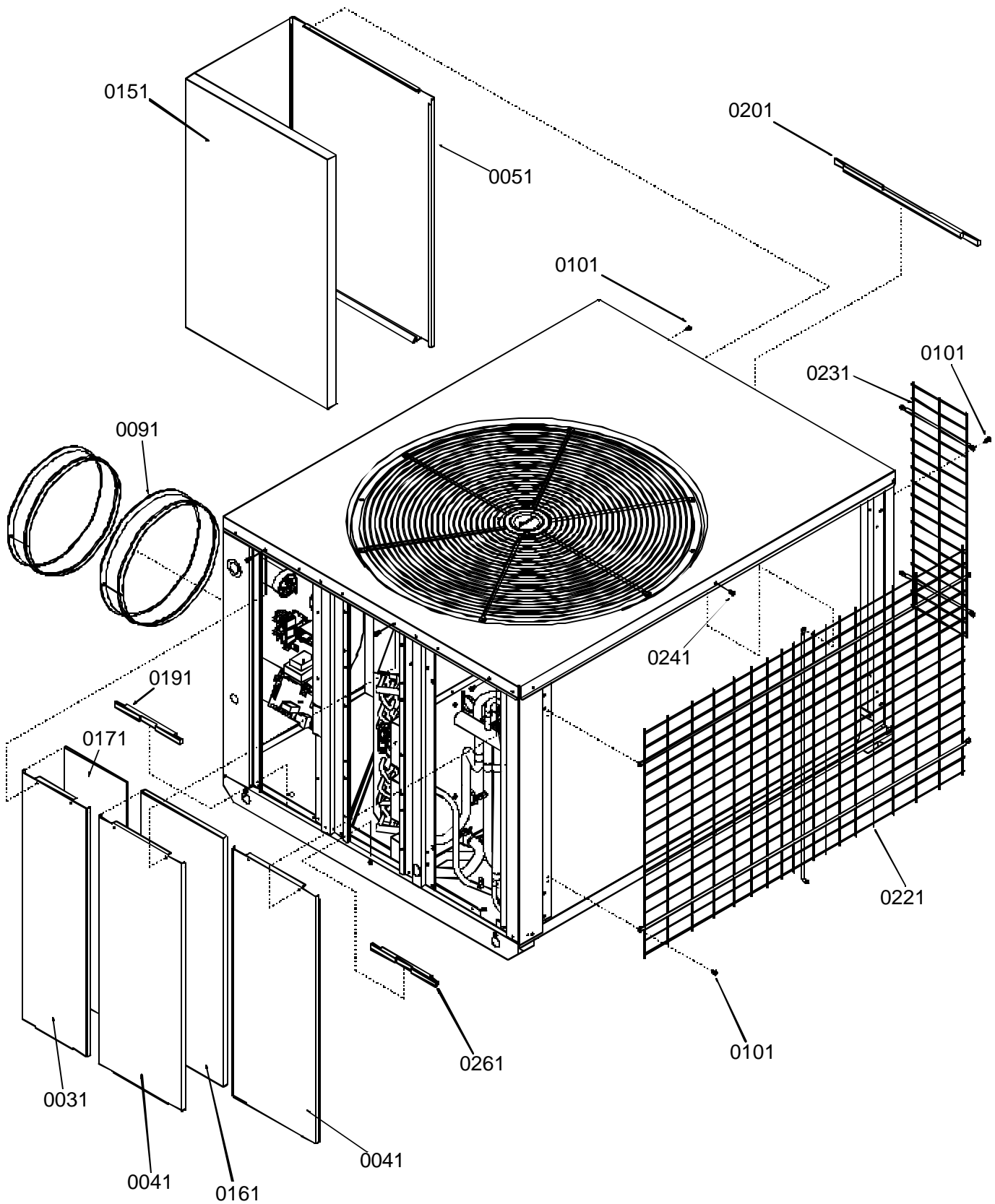
## SPECIAL PARTS

20490505	CERT-WARRANTY AMANA
RP6340012	MANUAL, REPAIR PARTS
10730421	MANUAL-INSTALL
10500222	MANUAL-USERS
20187902A	NAMEPLATE-AMANA

## Expanded Model Nomenclature

M1 - PCC24C02E	P1231101C
M2 - PCC30C02E	P1231102C
M3 - PCC36C02E	P1231103C
M4 - PCC42C02E	P1231104C
M5 - PCC48C02E	P1231105C
M6 - PCC60C02E	P1231106C
M7 - PCC24C02F	P1231107C
M8 - PCC30C02F	P1231108C
M9 - PCC36C02F	P1231109C
M10 - PCC42C02F	P1231110C
M11 - PCC48C02F	P1231111C
M12 - PCC60C02F	P1231112C

# Outer Cabinet



# Outer Cabinet

Ref. Part No:	Part No:	Description:	Ref. Part No:	Part No:	Description:
---------------	----------	--------------	---------------	----------	--------------

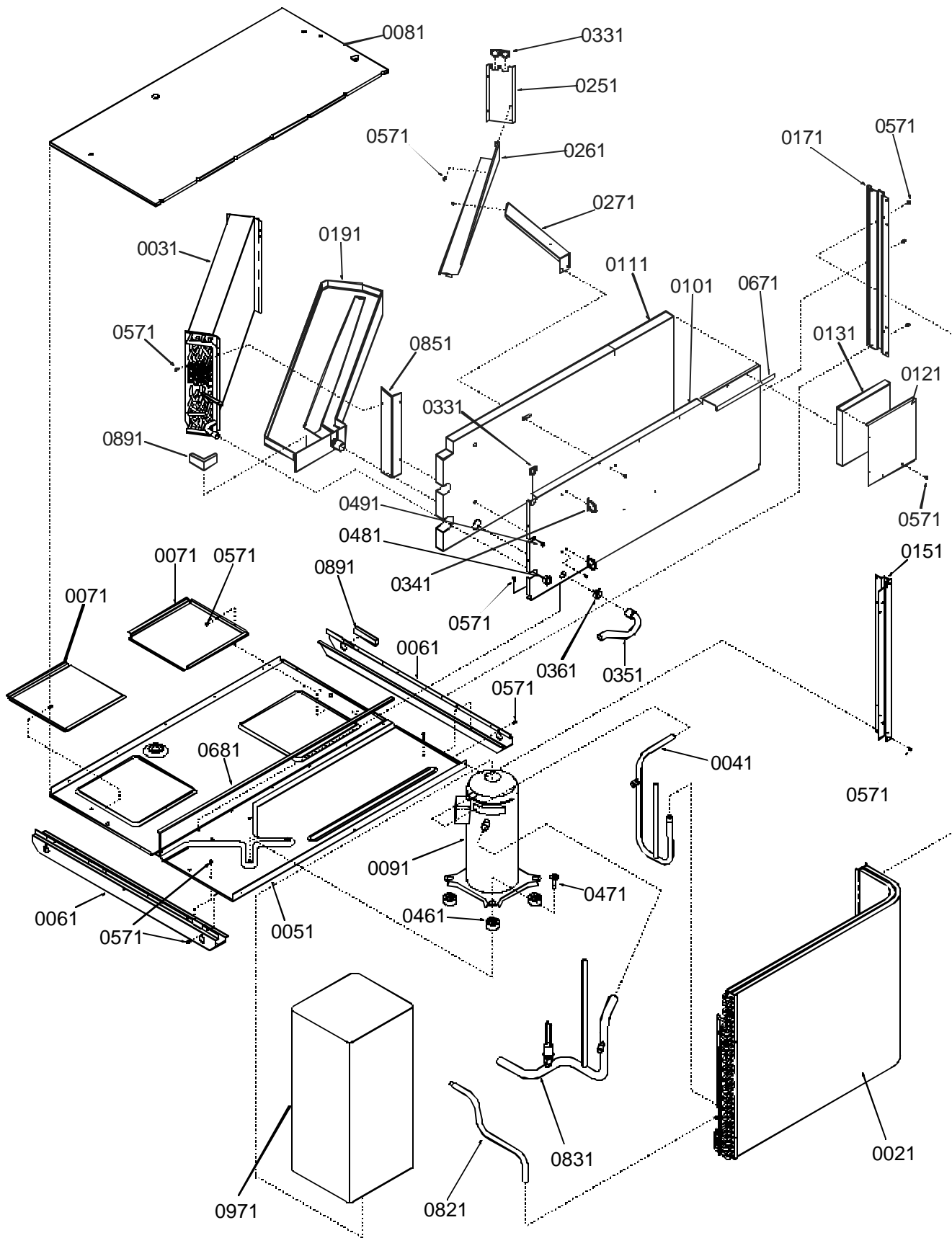
*Image 1:*

0031	11099009	DOOR-CAB (M1, M2, M3)
0031	11099013	DOOR-CAB (M4, M5, M6)
0031	11099017PDG	DOOR-CAB (M7, M8, M9)
0031	11099021PDG	DOOR-CAB (M10, M11, M12)
0041	11099010	DOOR-CAB (M1, M2, M3)
0041	11099014	DOOR-CAB (M4, M5, M6)
0041	11099018PDG	DOOR-CAB (M7, M8, M9)
0041	11099022PDG	DOOR-CAB (M10, M11, M12)
0051	11099011	DOOR-CAB (M1, M2, M3)
0051	11099015	DOOR-CAB (M4, M5, M6)
0051	11099019PDG	DOOR-CAB (M7, M8, M9)
0051	11099023PDG	DOOR-CAB (M10, M11, M12)
0091	20014201	TRANSITION-DUCT (M1, M2, M3, M4, M5, M7, M8, M9, M10, M11)
0101	M0221817	SCREW-SM (QTY 16)
0151	11130116	INSULATION (M1, M2, M3, M7, M8, M9)
0151	11130118	INSULATION (M4, M5, M6, M10, M11, M12)
0161	11131111	INSULATION (M4, M5, M6, M10, M11, M12)
0161	11131110	INSUL-DOOR (M1, M2, M3, M7, M8, M9)
0171	20014701	INSULATION (M1, M2, M3, M7, M8, M9)
0171	20014702	INSULATION (M4, M5, M6, M10, M11, M12)
0191	20412002	GASKET-FOAM
0201	20412001	GASKET-FOAM
0221	20199703	GRILLE-FLAT (M1, M2, M3)
0221	20199704	GRILLE-FLAT (M4, M5, M6)
0221	20199711	GRILLE-FLAT LT GRAY (M7, M8, M9)
0221	20199712	GRILLE-FLAT LT GRAY (M10, M11, M12)
0231	11184705	GRILLE-FLAT (M1, M2, M3)
0231	11184706	GRILLE-FLAT (M4, M5, M6)
0231	11184709	GRILLE-FLAT LT GRAY (M7, M8, M9)
0231	11184710	GRILLE-FLAT LT GRAY (M10, M11, M12)
0241	M0229130	SCREW-SD
0261	20412003	GASKET-FOAM
NS	20229401	BRKT-DUCT COVER (M6, M12)
NS	20212901	FLANGE (M1, M2, M3, M4, M5, M7, M8, M9, M10, M11)
NS	20187902A	NAMEPLATE-AMANA

Expanded Model Nomenclature

M1 - PCC24C02E	P1231101C
M2 - PCC30C02E	P1231102C
M3 - PCC36C02E	P1231103C
M4 - PCC42C02E	P1231104C
M5 - PCC48C02E	P1231105C
M6 - PCC60C02E	P1231106C
M7 - PCC24C02F	P1231107C
M8 - PCC30C02F	P1231108C
M9 - PCC36C02F	P1231109C
M10 - PCC42C02F	P1231110C
M11 - PCC48C02F	P1231111C
M12 - PCC60C02F	P1231112C

# Internal Components



# Internal Components

Ref. Part No:	Ref. Part No:	Description:	Description:
<i>Image 1:</i>			
0021	20253601	CONDENSER ASSY (M1, M2, M7, M8)	0831 20321004 SUCTION TUBE WELD (M5, M6, M11, M12)
0021	20253901	CONDENSER ASSY (M3, M9)	0851 20247105 FILLER-EVAP (M1, M2, M3, M7, M8, M9)
0021	20266602	CONDENSER ASSY (M4, M5, M6, M10, M11, M12)	0851 20247106 FILLER-EVAP (M4, M5, M6, M10, M11, M12)
0031	20155303	EVAPORATOR ASSY (M1, M7)	0891 10839807 GASKET-.37X.75
0031	20155401	EVAPORATOR ASSY (M3, M9)	0971 20254101 BLANKET-SOUND (M1, M2, M3, M4, M7, M8, M9, M10)
0031	20155403	EVAPORATOR ASSY (M2, M8)	0971 20254103 BLANKET-SOUND (M5, M6, M11, M12)
0031	20268001	EVAPORATOR ASSY (M4, M10)	Expanded Model Nomenclature
0031	20268002	EVAPORATOR ASSY (M5, M11)	M1 - PCC24C02E P1231101C
0031	20268003	EVAPORATOR ASSY (M6, M12)	M2 - PCC30C02E P1231102C
0041	20255910	DISCHARGE WELD (M1, M2, M7, M8)	M3 - PCC36C02E P1231103C
0041	20255911	DISCHARGE WELD (M3, M9)	M4 - PCC42C02E P1231104C
0041	20255912	DISCHARGE WELD (M4, M10)	M5 - PCC48C02E P1231105C
0041	20255913	DISCHARGE WELD (M5, M11)	M6 - PCC60C02E P1231106C
0051	20001202	BASEPAN	M7 - PCC24C02F P1231107C
0061	20000503	RAIL-BASEPAN (QTY 2)	M8 - PCC30C02F P1231108C
0071	20001101	COVER-DUCT (QTY 2)	M9 - PCC36C02F P1231109C
0081	20012902	INSUL-BASEPAN	M10 - PCC42C02F P1231110C
0091	ZR22KCPFV930	COMPRESSOR, ZR22KC-PFV-230 (M1, M7) QLD PN# 10289221	M11 - PCC48C02F P1231111C
0091	ZR28KCPFV930	COMPRESSOR, ZR28KC-PFV-230 (M2, M8) QLD PN# 10289222	M12 - PCC60C02F P1231112C
0091	ZR34KCPFV930	COMPRESSOR, ZR34KC-PFV-230 (M3, M9) QLD PN# 10289223	
0091	ZR40KCPFV930	COMPRESSOR, ZR40KC-PFV-230 (M4, M10) QLD PN# 11012513	
0091	ZR47K3PFV935	COMPRESSOR, ZR47K3-PFV-235 (M5, M11) QLD PN# 11012512	
0091	ZR57K3PFV950	COMPRESSOR, ZR57K3-PFV-250 (M6, M12) QLD PN# 10289208	
0101	20013505	PART-COND (M1, M2, M3, M7, M8, M9)	
0101	20013506	PART-COND (M4, M5, M6, M10, M11, M12)	
0111	20013601	INSUL-COND (M1, M2, M3, M7, M8, M9)	
0111	20013602	INSUL-COND (M4, M5, M6, M10, M11, M12)	
0121	20000901	PLATE-COND	
0131	11130114	INSUL-PLATE	
0151	20001804	POST-CORNER (M1, M2, M3)	
0151	20001805	POST-CORNER (M4, M5, M6)	
0151	20001806PDG	POST-CORNER PKG PNT (M7, M8, M9)	
0151	20001807PDG	POST-CORNER PKG PNT (M10, M11, M12)	
0171	11098719	POST-SIDE (M1, M2, M3)	
0171	11098721	POST-SIDE (M4, M5, M6)	
0171	11098723PDG	POST-SIDE PKG PNT (M7, M8, M9)	
0171	11098725PDG	POST-SIDE PKG PNT (M10, M11, M12)	
0191	20000601	PAN-DRIP	
0251	11197101	PART-EVAP	
0261	20014401	COIL-BAFFLE	
0271	20013901	SUPPORT-MOTOR	
0331	A4568804	GROMMET-D	
0341	M0118702	CLIP-GUIDE	
0351	20295401	DRAIN ASSY	
0361	M0117605	CLAMP-TUBE (QTY 2)	
0461	10107301	GROMMET-COMP FOOT (QTY 4)	
0471	M0221641	SCREW-SHOULDER TF (QTY 4)	
0481	A4554820	BUSHING-SNAP (QTY 2)	
0491	A4554821	BUSHING-SNAP	
0571	M0221817	SCREW-SM (QTY 105)	
0671	10839803	GASKET-.12X.50 (QTY 6)	
0821	20254705	TUBE-LIQUID (M1, M2, M7, M8)	
0821	20254706	TUBE-LIQUID (M3, M9)	
0821	20266502	TUBE-LIQUID (M4, M5, M6, M10, M11, M12)	
0831	20254609	SUCTION TUBE WELD (M1, M2, M7, M8)	
0831	20254610	SUCTION TUBE WELD (M3, M9)	
0831	20254611	SUCTION TUBE WELD (M4, M10)	

# Discharge/Suction Weldment

Image 1

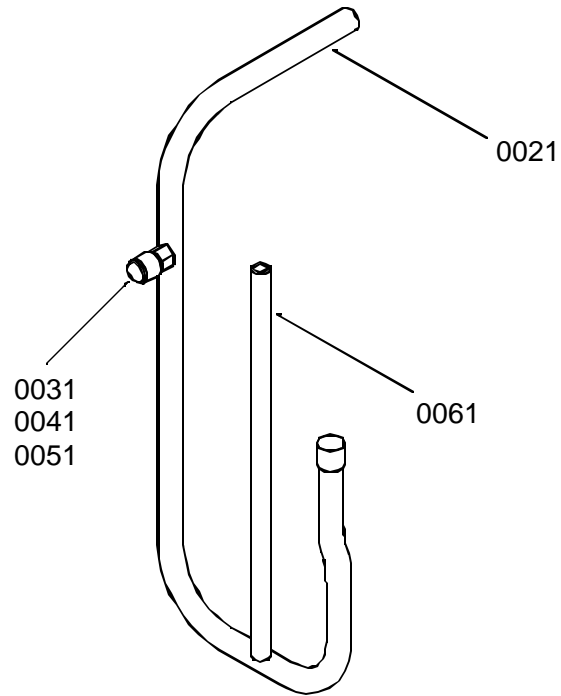
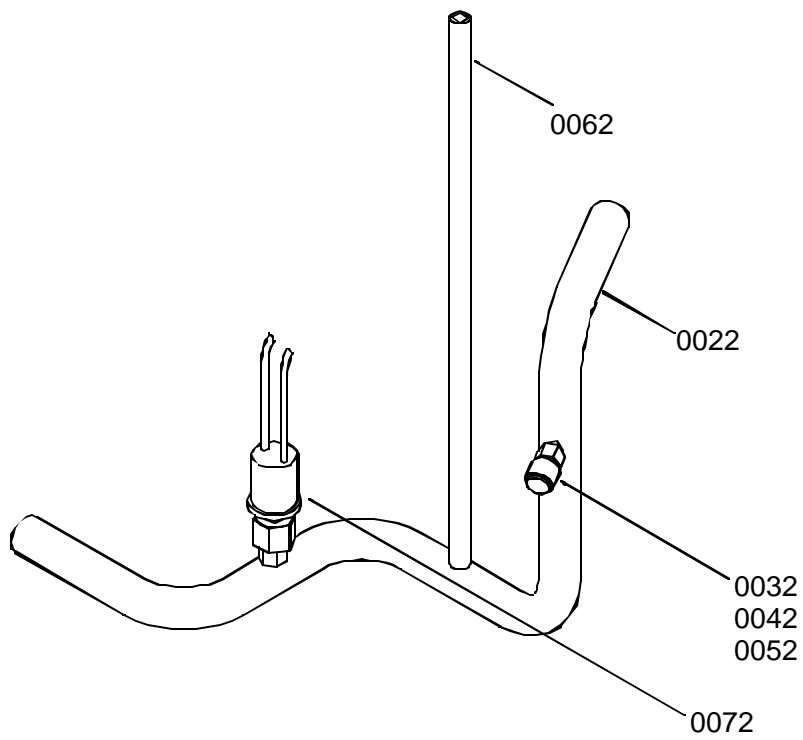


Image 2



# Discharge/Suction Weldment

Ref. Part No:	Part No:	Description:	Ref. Part No:	Part No:	Description:
---------------	----------	--------------	---------------	----------	--------------

*Image 1:*

0021	20254910	TUBE-DISCHARGE (M1, M2, M7, M8)
0021	20254911	TUBE-DISCHARGE (M3, M9)
0021	20254912	TUBE-DISCHARGE (M4, M10)
0021	20254913	TUBE-DISCHARGE (M5, M11)
0021	20294201	TUBE-DISCHARGE (M6, M12)
0031	A4692702	VALVE-DILL
0041	A4692801	VALVE-CORE
0051	A4692602	NUT-CAP
0061	20370704	TUBE-PROCESS DISCHARGE
NS	A3029601	TEE-REDUCING (M6, M12)
NS	A3029603	TEE-REDUCING (M3, M9)

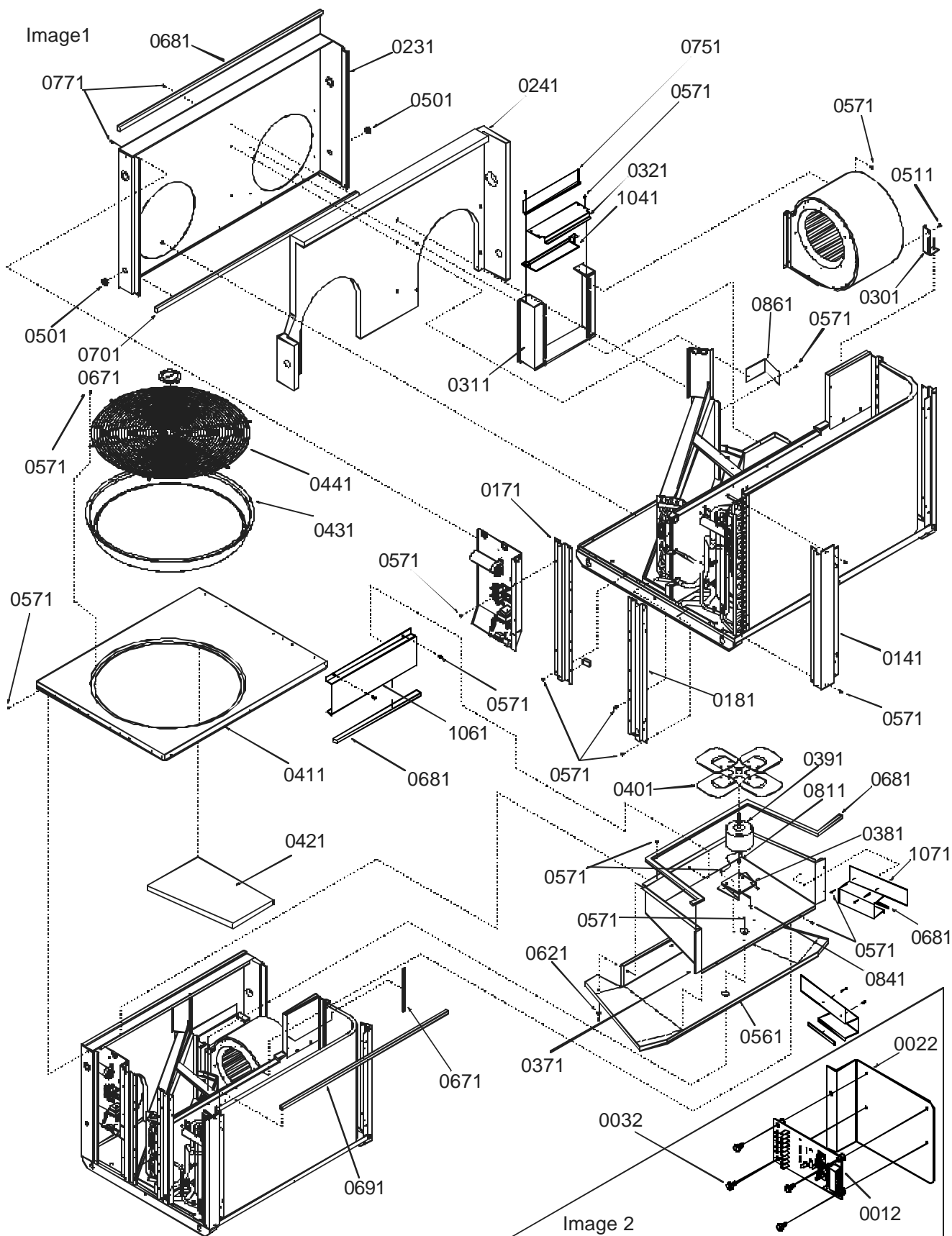
*Image 2:*

0022	20254509	TUBE-SUCTION (M1, M2, M7, M8)
0022	20254510	TUBE-SUCTION (M3, M9)
0022	20254511	TUBE-SUCTION (M4, M10)
0022	20346902	TUBE-SUCTION (M5, M6, M11, M12)
0032	A4692702	VALVE-DILL
0042	A4692801	VALVE-CORE
0052	A4692602	NUT-CAP
0062	D9873904	TUBE-PROCESS SUCTION
0072	C6453318	CUTOUT-LOW PRESSURE, CUTOUT 10 PSI, CUT IN, 40 PSI

Expanded Model Nomenclature

M1 - PCC24C02E	P1231101C
M2 - PCC30C02E	P1231102C
M3 - PCC36C02E	P1231103C
M4 - PCC42C02E	P1231104C
M5 - PCC48C02E	P1231105C
M6 - PCC60C02E	P1231106C
M7 - PCC24C02F	P1231107C
M8 - PCC30C02F	P1231108C
M9 - PCC36C02F	P1231109C
M10 - PCC42C02F	P1231110C
M11 - PCC48C02F	P1231111C
M12 - PCC60C02F	P1231112C

# Internal Components



# Internal Components

Ref. Part No:	Ref. Part No:	Description:
<i>Image 1:</i>		
0141	20001704	POST CORNER (M4, M5, M6)
0141	20001703	POST-CORNER (M1, M2, M3)
0141	20001705PDG	POST-CORNER PNT (M7, M8, M9)
0141	20001706PDG	POST-CORNER PNT (M10, M11, M12)
0171	11098719	POST-SIDE (M1, M2, M3)
0171	11098721	POST-SIDE (M4, M5, M6)
0171	11098723PDG	POST-SIDE (M7, M8, M9)
0171	11098725PDG	POST-SIDE (M10, M11, M12)
0181	11098720	POST-SIDE (M1, M2, M3)
0181	11098722	POST-SIDE (M4, M5, M6)
0181	11098724PDG	POST-SIDE (M7, M8, M9)
0181	11098726PDG	POST-SIDE (M10, M11, M12)
0231	20001304	PANEL-BACK (M1, M2, M3)
0231	20001305	PANEL-BACK (M6)
0231	20001306	PANEL-BACK (M4, M5)
0231	20001307PDG	PANEL-BACK (M7, M8, M9)
0231	20001308PDG	PANEL-BACK (M10, M11)
0231	20001309PDG	PANEL-BACK (M12)
0241	20013801	INSUL-BACK (M1, M2, M3, M7, M8, M9)
0241	20013802	INSUL-BACK (M4, M5, M10, M11)
0241	20013803	INSUL-BACK (M6, M12)
0301	20013202	BRACKET-BLWR
0311	20020701	HEATER BOX (M1, M2, M3, M7, M8, M9)
0311	20207501	HEATER BOX (M4, M5, M10, M11)
0311	20237801	HEATER BOX (M6, M12)
0321	20237601	TOP-HEATER BOX (M6, M12)
0321	20020601	TOP-HTR BOX (M1, M2, M3, M4, M5, M7, M8, M9, M10, M11)
0371	11098304	PART-FAN
0381	11099501	MOUNT-COND MTR
0391	11112806	MOTOR-COND 1/3 HP, 1100 RPM, 208/230 V (M6, M12)
0391	11112805	MOTOR-COND 1/5 HP, 825 RPM, 208/230 V (M1, M2, M3, M4, M5, M7, M8, M9, M10, M11)
0401	11182906	FAN-CONDENSER CW
0411	20000704	COVER-TOP (M1, M2, M3, M4, M5, M6)
0411	20000705PDG	COVER-TOP (M7, M8, M9, M10, M11, M12)
0421	11182501	INSUL-TOP
0431	20171401	ORIFICE-COND
0441	11112003	GRILLE-FAN (M1, M2, M3, M4, M5, M6)
0441	11112004	GRILLE-FAN (M7, M8, M9, M10, M11, M12)
0501	A4603801	GROMMET (QTY 2)
0511	M0250558	SCREW-TC
0561	11197402	INSUL-FAN PART
0571	M0221817	SCREW-SM (QTY 105)
0621	11197701	WASHER-RETAINER (QTY 2)
0671	10839803	GASKET-.12X.50 (QTY 6)
0681	10839801	GASKET-.25X.50 (QTY 13)
0691	10839712	GASKET .62X.75 (QTY 3)
0701	10839810	GASKET-.18X.38 (QTY 4)
0751	20237501	BAFFLE-HEATER BX (M6, M12)
0751	20207602	BAFFLE-HTR BOX (M4, M5, M10, M11)
0751	20037201	HEATER BOX-BAF (M1, M2, M3, M7, M8, M9)
0771	M0220819	SCREW-SM (QTY 9)
0811	20042802	GROMMET-ISLR (QTY 4)
0841	M0280801	NUT-HEX (QTY 4)
0861	20247001	BRACKET-EVAP
1041	20192101	INTERFACE ASSY (M6, M12)
1051	20237701	BRKT-COVER (M6, M12)
1061	20248501	BAFFLE-SOUND (M1, M2, M3, M7, M8, M9)
1061	20248502	BAFFLE-SOUND (M4, M5, M6, M10, M11, M12)
NS	20248401	BAFFLE-SOUND (M1, M2, M3, M7, M8, M9)
NS	20248402	BAFFLE-SOUND (M4, M5, M6, M10, M11, M12)

Ref. Part No:	Ref. Part No:	Description:
<i>Image 2:</i>		
0012	20158901	BOARD-INTERFACE (M6, M12)
0022	20191902	BRACKET-INTFC (M6, M12)
0032	M0216519	SCREW-SM (M6, M12)
Expanded Model Nomenclature		

M1 - PCC24C02E	P1231101C
M2 - PCC30C02E	P1231102C
M3 - PCC36C02E	P1231103C
M4 - PCC42C02E	P1231104C
M5 - PCC48C02E	P1231105C
M6 - PCC60C02E	P1231106C
M7 - PCC24C02F	P1231107C
M8 - PCC30C02F	P1231108C
M9 - PCC36C02F	P1231109C
M10 - PCC42C02F	P1231110C
M11 - PCC48C02F	P1231111C
M12 - PCC60C02F	P1231112C

# Blower/Control Panel

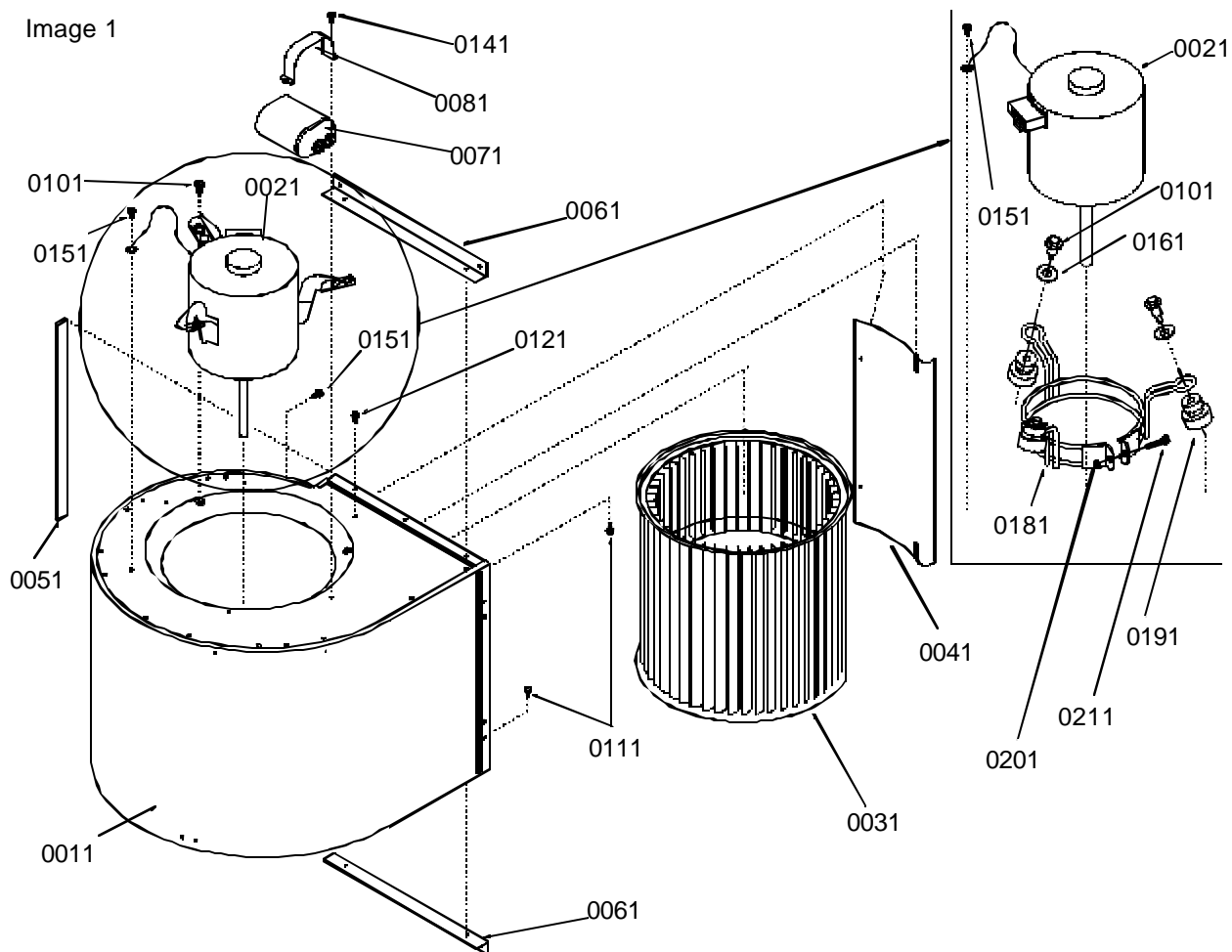
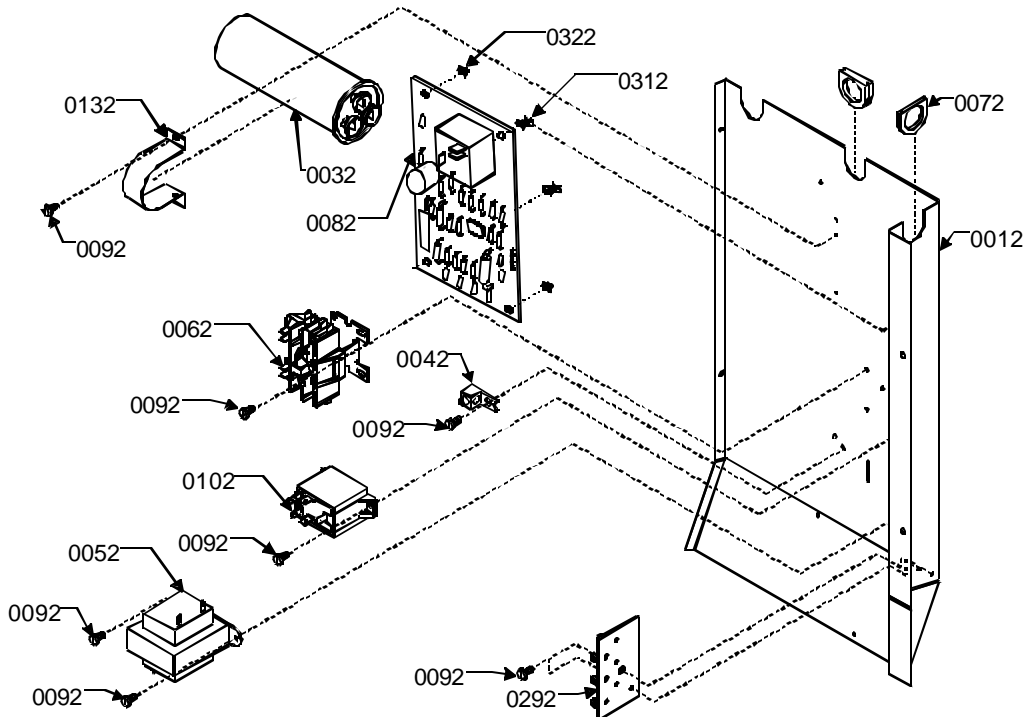


Image 2



# Blower/Control Panel

## Ref. Part

No: No: Description:

### Image 1:

0011	20162503	BLOWER HSG WELD
0021	20509408	MOTOR-ECM AND END BELL 3/4 HP (M6, M12)
0021	20028601	MOTOR-EVAP 3/4 HP, 1100 RPM (M4, M5, M10, M11)
0021	20013001	MOTOR-EVAP, 1/3 HP, 950 RPM (M1, M2, M3, M7, M8, M9)
0031	D6723302	WHEEL-BLOWER
0041	C6121810	CUTOFF
0061	20021101	RAIL-BLOWER (QTY 2)
0071	D6879747	CAPACITOR, 10-370 (M1, M2, M3, M7, M8, M9)
0071	D6879739	CAPACITOR, 15-370 (M4, M5, M10, M11)
0081	A3410501	STRAP-CAPACITOR (M4, M5, M10, M11)
0081	A4055402	STRAP-CAPACITOR (M1, M2, M3, M7, M8, M9)
0101	M0211017	SCREW-SM #8-1/2LG (QTY 3)
0111	M0250558	SCREW-TC (M1, M2, M3, M7, M8, M9)
0121	M0211020	SCREW-SM #8-7/8 (QTY 2)
0141	M0233716	SCREW-SD (M1, M2, M3, M4, M5, M7, M8, M9, M10, M11)
0161	M0274008	WASHER-FLAT (M4, M5, M6, M10, M11, M12)
0171	M0221461	SCREW-TC (M4, M5, M6, M10, M11, M12)
0181	C9443702	BRKT-MOTOR MT (M4, M5, M6, M10, M11, M12)
0191	A4002701	GROMMET (M4, M5, M6, M10, M11, M12)
0201	M0282015	NUT-KEPS (M4, M5, M6, M10, M11, M12)
0211	M0267144	SCREW-MACH (M4, M5, M6, M10, M11, M12)

### Image 2:

0012	20014105	CONTROL BOX (M6, M12)
0012	20014106	CONTROL BOX (M3, M9)
0012	20014106	CONTROL BOX (M1, M2, M4, M5, M7, M8, M10, M11)
0032	D6789034	CAPACITOR-METAL, 35/7.5, 440 (M2, M8)
0032	D6789027	CAPACITOR-METAL, 40/7.5, 440 (M4, M10)
0032	D6789041	CAPACITOR-METAL, 60/7.5, 440 (M5, M11)
0032	D6789042	CAPACITOR-METAL, 80/7.5, 440 (M6, M12)
0032	D6789062	CAPACITOR-ROUND, 35/7.5, 3740 (M1, M7)
0032	D6789057	CAPACITOR-ROUND, 40/7.5, 370 (M3, M9)
0042	A9015201	LUG-GROUND
0052	11120302	TRANSFORMER
0062	22308301	CONTACTOR-30A (M1, M2, M3, M4, M5, M7, M8, M9, M10, M11)
0062	22308302	CONTACTOR-40A (M6, M12)
0072	M0335307	CONNECTOR-MALE
0082	B1370735	ELECT BLWR TIME DELAY (M1, M2, M3, M4, M5, M7, M8, M9, M10, M11)
0092	M0211017	SCREW-SM #8-1/2LG (QTY AR)
0102	10135601	RELAY (M1, M2, M3, M4, M5, M7, M8, M9, M10, M11)
0132	C6300502	STRAP-CAPACITOR (M1, M3, M7, M9)
0132	C6300503	STRAP-CAPACITOR (M2, M4, M5, M6, M8, M10, M11, M12)
0292	20244002	BOARD-TERMINAL
0312	B1393802	SUPPORT, 2-WING BOA (M1, M2, M3, M4, M5, M7, M8, M9, M10, M11)
0322	B1393803	SUPPORT, SINGLE-WING (M1, M2, M3, M4, M5, M7, M8, M9, M10, M11)

## Ref. Part

No: No: Description:

### Expanded Model Nomenclature

M1 - PCC24C02E	P1231101C
M2 - PCC30C02E	P1231102C
M3 - PCC36C02E	P1231103C
M4 - PCC42C02E	P1231104C
M5 - PCC48C02E	P1231105C
M6 - PCC60C02E	P1231106C
M7 - PCC24C02F	P1231107C
M8 - PCC30C02F	P1231108C
M9 - PCC36C02F	P1231109C
M10 - PCC42C02F	P1231110C
M11 - PCC48C02F	P1231111C
M12 - PCC60C02F	P1231112C

# Coils/Gasket

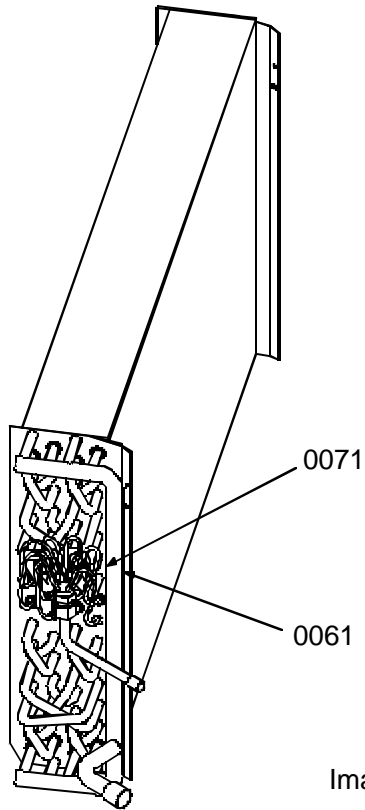


Image 1

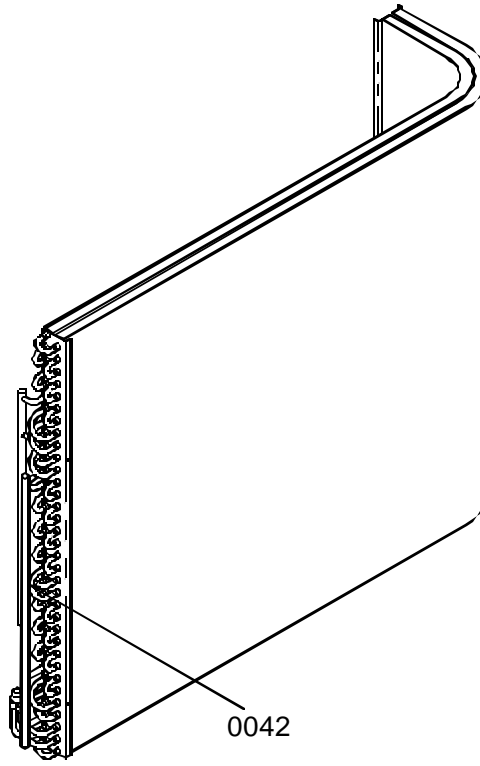
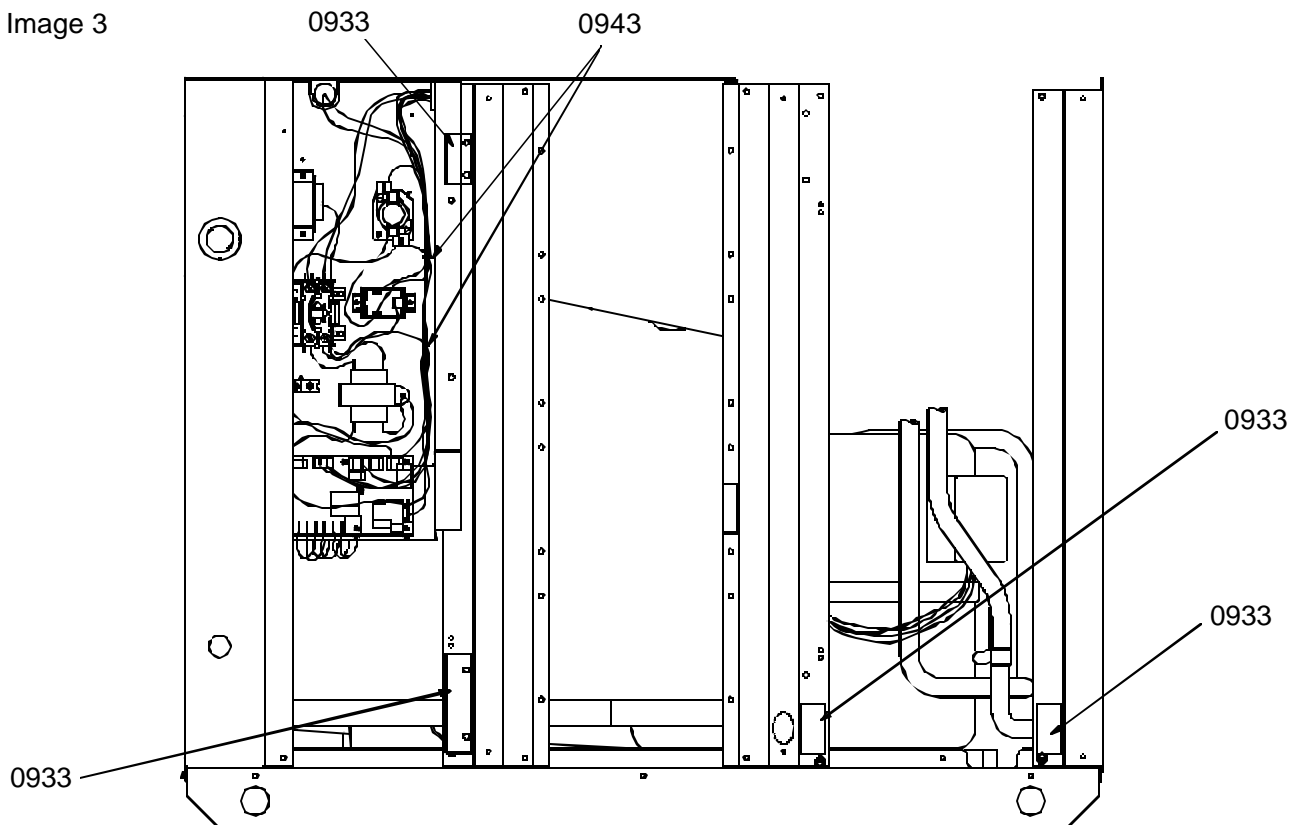


Image 2

Image 3



# Coils/Gasket

Ref. Part No:	Part No:	Description:	Ref. Part No:	Part No:	Description:
---------------	----------	--------------	---------------	----------	--------------

*Image 1:*

0061	20014802	MANIFOLD (M1, M7)
0061	20014803	MANIFOLD (M2, M3, M8, M9)
0061	20207301	MANIFOLD (M4, M5, M6, M10, M11, M12)
0071	11067521	DIST ASSY (M2, M8)
0071	11067528	DIST ASSY (M5, M11)
0071	11067529	DIST ASSY (M6, M12)
0071	11067512	DISTRIBUTOR (M3, M9)
0071	11067514	DISTRIBUTOR (M1, M7)
0071	11067527	DISTRIBUTOR (M4, M10)

*Image 2:*

0042	20253701	MANIFOLD (M1, M2, M7, M8)
0042	20254001	MANIFOLD (M3, M9)
0042	20266202	MANIFOLD (M4, M5, M6, M10, M11, M12)
NS	M0321202	TIE-ELEC LG

*Image 3:*

0933	10839811	GASKET-.12X1.0
0943	M0321204	TIE-ELEC SM (M3, M4, M5, M6, M9, M10, M11, M12)

Expanded Model Nomenclature

M1 - PCC24C02E	P1231101C
M2 - PCC30C02E	P1231102C
M3 - PCC36C02E	P1231103C
M4 - PCC42C02E	P1231104C
M5 - PCC48C02E	P1231105C
M6 - PCC60C02E	P1231106C
M7 - PCC24C02F	P1231107C
M8 - PCC30C02F	P1231108C
M9 - PCC36C02F	P1231109C
M10 - PCC42C02F	P1231110C
M11 - PCC48C02F	P1231111C
M12 - PCC60C02F	P1231112C