

Models and manufacturing numbers in this manual

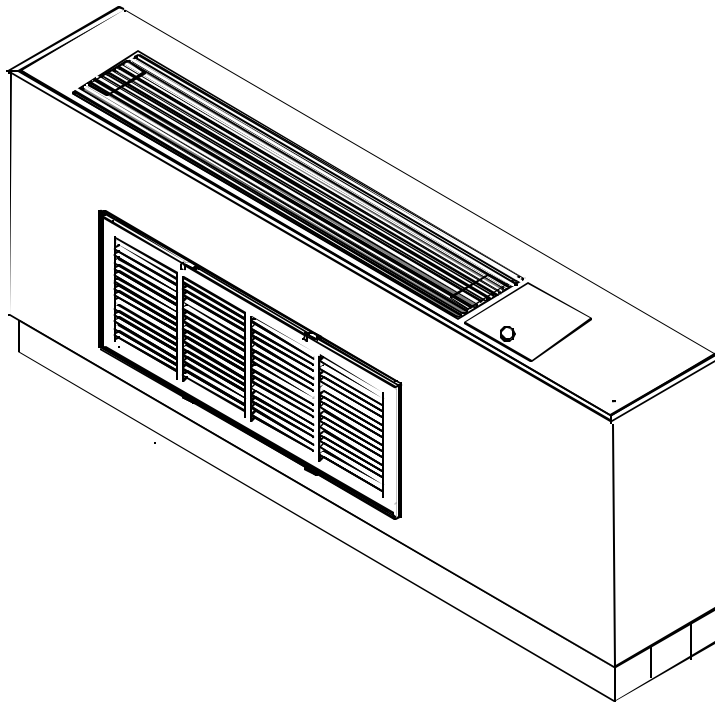
PTC073A00GC	P1225428R
PTC073A00HC	P1225427R
PTC093A00FC	P1225422R
PTC093A00GC	P1225423R
PTC093A00HC	P1225421R
PTC123A00FC	P1225425R
PTC123A00GC	P1225426R
PTC123A00HC	P1225424R
PTC153A00FC	P1225430R
PTC153A00FC	P1225443R
PTC153A00GC	P1225431R
PTC153A00GC	P1225444R
PTC153A00HC	P1225429R
PTC153A00HC	P1225442R
PTC153A00NC	P1225441R
PTC153A00NC	P1225445R

Service Parts

Package Terminal Air Conditioner Hydronic Units

This manual replaces RP4210019 Rev. 1.

This manual is to be used by qualified appliance technicians only.



Amana is a trademark of Maytag Worldwide N.V. and used under license to Goodman Company, L.P. All rights reserved.

RP4210019
Revision 2
July 2003

Copyright © 2003 Goodman Company, L.P.

Important Information

Goodman Company, L.P. is not responsible for personal injury or property damage resulting from improper service. Review all service information before beginning repairs.

Warranty service must be performed by an authorized technician, using authorized factory parts. If service is required after the warranty expires, Goodman Company, L.P. also recommends contacting an authorized technician and using authorized factory parts.

For assistance within the U.S.A. contact:

Consumer Affairs Department
Goodman Company, L.P.
7401 Security Way
Houston, Texas 77040
877-254-4729-Telephone
713-863-2382-Facsimile

For assistance outside the U.S.A. contact:

International Division
Goodman Company, L.P.
7401 Security Way
Houston, Texas 77040
713-861-2500-Telephone
713-863-2382-Facsimile

Index

Functional Parts List	4 - 5
Illustration and Parts	6 - 17

Views shown are for parts illustrations only, not servicing procedures.

Revision 1 adds manufacturing numbers P1225441R, P1225442R, P1225443R, and P1225444R.
Revision 2 adds manufacturing number P1225445R.

Text Codes:

AR - As Required

NA - Not Available

NS - Not Shown

00000000 - See Note

QTY - Quantity Example (QTY 3) (If Quantity not shown, Quantity = 1)

M - Model Example (M1) (If M Code not shown, then part is used on all Models)

Expanded Model Nomenclature:

Example	
M1 - Model#1	P _____
M2 - Model#2	P _____
M3 - Model#3	P _____

Functional Parts

Part

No: Description:

B1160701	BOARD-TERM (M2, M3, M5, M6, M8, M10, M11, M12, M14, M15, M16)
D6789051	CAPACITOR (M4, M5, M6)
D6789024	CAPACITOR-DUAL (M13, M14, M15, M16)
D6789049	CAPACITOR-POLY (M9, M10, M11, M12)
D6789054	CAPACITOR-ROUND (M1, M2, M3, M7, M8)
D6926120	COMP 2K21S236C-7A (M13, M14, M15, M16)
D6926116	COMP 2K21S3R236A-7A (M9, M10, M11, M12)
D6985807	COMP-PN 2P17S3R236A (M4, M5, M6)
D6887709	COMP-PN 2R10S3R236A (M7, M8)
D6887711	COMP-PN 2R13S3R236A (M1, M2, M3)
20007503	COND ASSY (M1, M2, M3, M4, M5, M6, M9, M10, M11, M12, M13, M14, M15, M16)
20007702	COND ASSY (M7, M8)
11114401	CORD-250V 15A
20284906	DRYER-FILTER (M9, M10, M11, M12, M13, M14, M15, M16)
20284902	DRYER-FILTER (M1, M2, M3)
20284901	DRYER-FILTER (M7, M8)
20284904	DRYER-FILTER (M4, M5, M6)
11165803	EVAP ASSY (M7, M8)
11165703	EVAP ASSY (M1, M2, M3)
11165603	EVAP ASSY (M4, M5, M6, M9, M10, M11, M12, M13, M14, M15, M16)
20008301	HARNESS-HYDR HT PTC (M16)
11114907	MOTOR-FAN (M1, M2, M3, M7, M8)
11114909	MOTOR-FAN (M4, M5, M6, M9, M10, M11, M12, M13, M14, M15, M16)
11172801	MOTOR-POWER-VENT/DOOR (M12, M13, M14, M15, M16)
D6961639	OVERLOAD (M1, M2, M3)
D6961636	OVERLOAD (M7, M8)
D6961612	OVERLOAD (M4, M5, M6, M12)
D6961607	OVERLOAD (M9, M10, M11)
20295502	PC BOARD
C8873932	RELAY (M2, M3, M5, M6, M8, M10, M11, M12, M13, M14, M15, M16)
C8873917	RELAY
11045802	SCROLL-BLOWER
20295701	THERMISTOR
20295702	THERMISTOR
B1378501	TRANSFORMER (M1, M2, M3, M4, M5, M6, M7, M8, M9, M10, M11, M12, M13, M14, M15)
11044101	WHEEL-BLOWER

Functional Parts

Part

No: **Description:**

SPECIAL PARTS

11113303 MANUAL-OWNERS (M1, M2, M3, M4, M5, M6, M7, M8, M9, M10, M11)
11113306 MANUAL-OWNERS (M12, M13, M14, M15, M16)
RP4210019 PARTS MANUAL
RS4200001 SERVICE MANUAL
11046401 WARRANTY

Expanded Model Nomenclature

M1 - PTC093A00HC	P1225421R
M2 - PTC093A00FC	P1225422R
M3 - PTC093A00GC	P1225423R
M4 - PTC123A00HC	P1225424R
M5 - PTC123A00FC	P1225425R
M6 - PTC123A00GC	P1225426R
M7 - PTC073A00HC	P1225427R
M8 - PTC073A00GC	P1225428R
M9 - PTC153A00HC	P1225429R
M10 - PTC153A00FC	P1225430R
M11 - PTC153A00GC	P1225431R
M12 - PTC153A00NC	P1225441R
M13 - PTC153A00HC	P1225442R
M14 - PTC153A00FC	P1225443R
M15 - PTC153A00GC	P1225444R
M16 - PTC153A00NC	P1225445R

Shroud/Inside Front

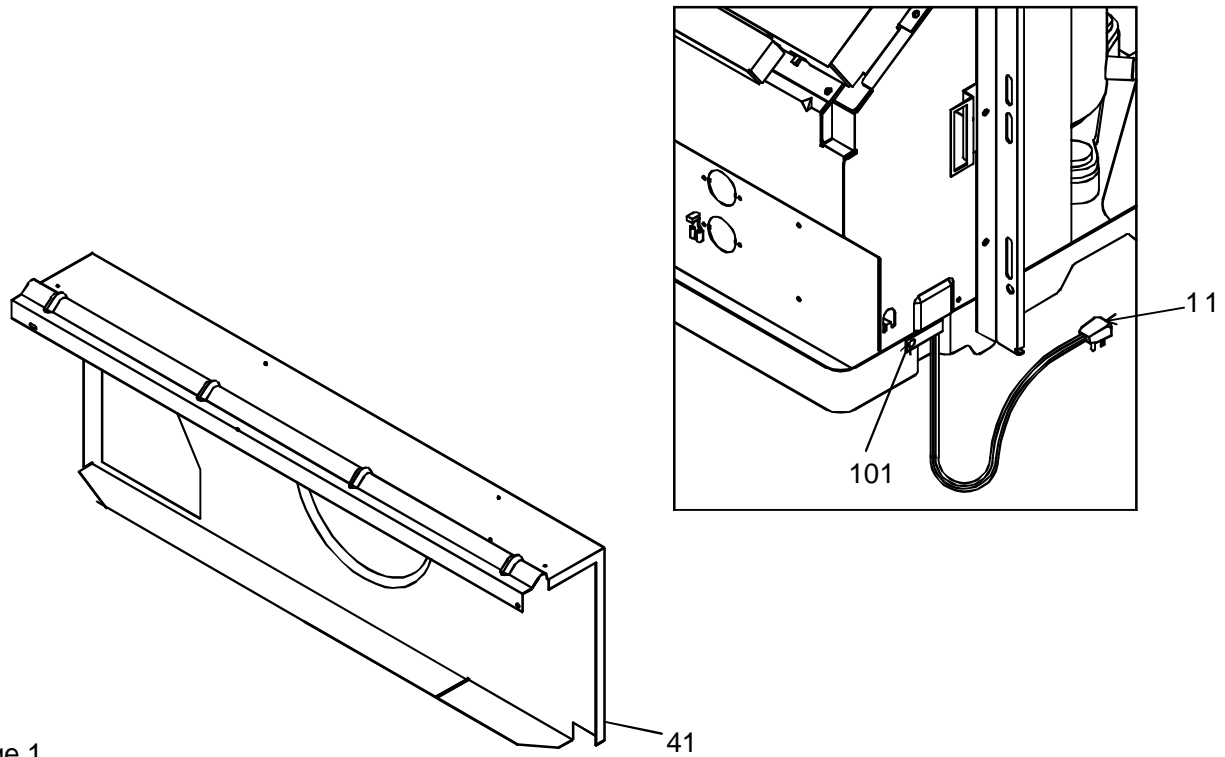
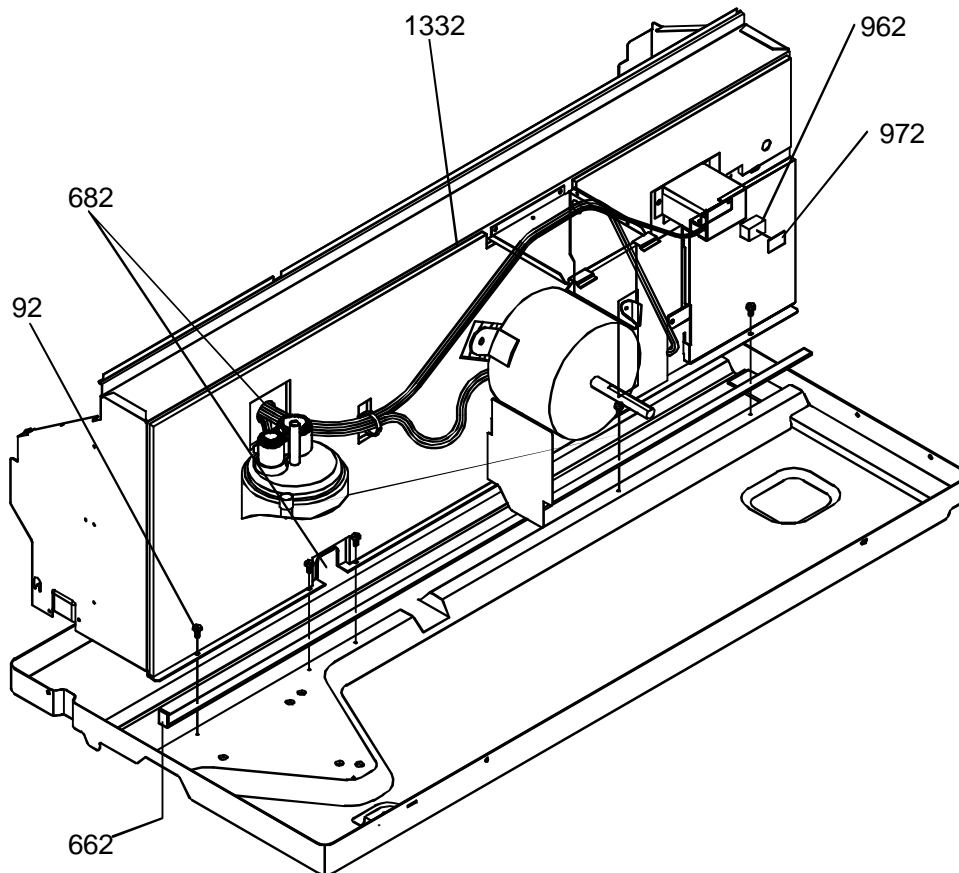


Image 1

Image 2



Shroud/Inside Front

Ref. Part No:	Part No:	Description:	Ref. Part No:	Part No:	Description:
---------------	----------	--------------	---------------	----------	--------------

Image 1:

11	11114401	CORD-250V 15A
41	11042511	BASEPAN-PNT PTC
41	11044302	BLOWER INTAKE-PNT (M1, M2, M3, M4, M5, M6, M7, M8, M9, M10, M11)
41	11044304	BLOWER-INT PNT PTC (M12, M13, M14, M15, M16)
101	M0103905	CLAMP-SPEED

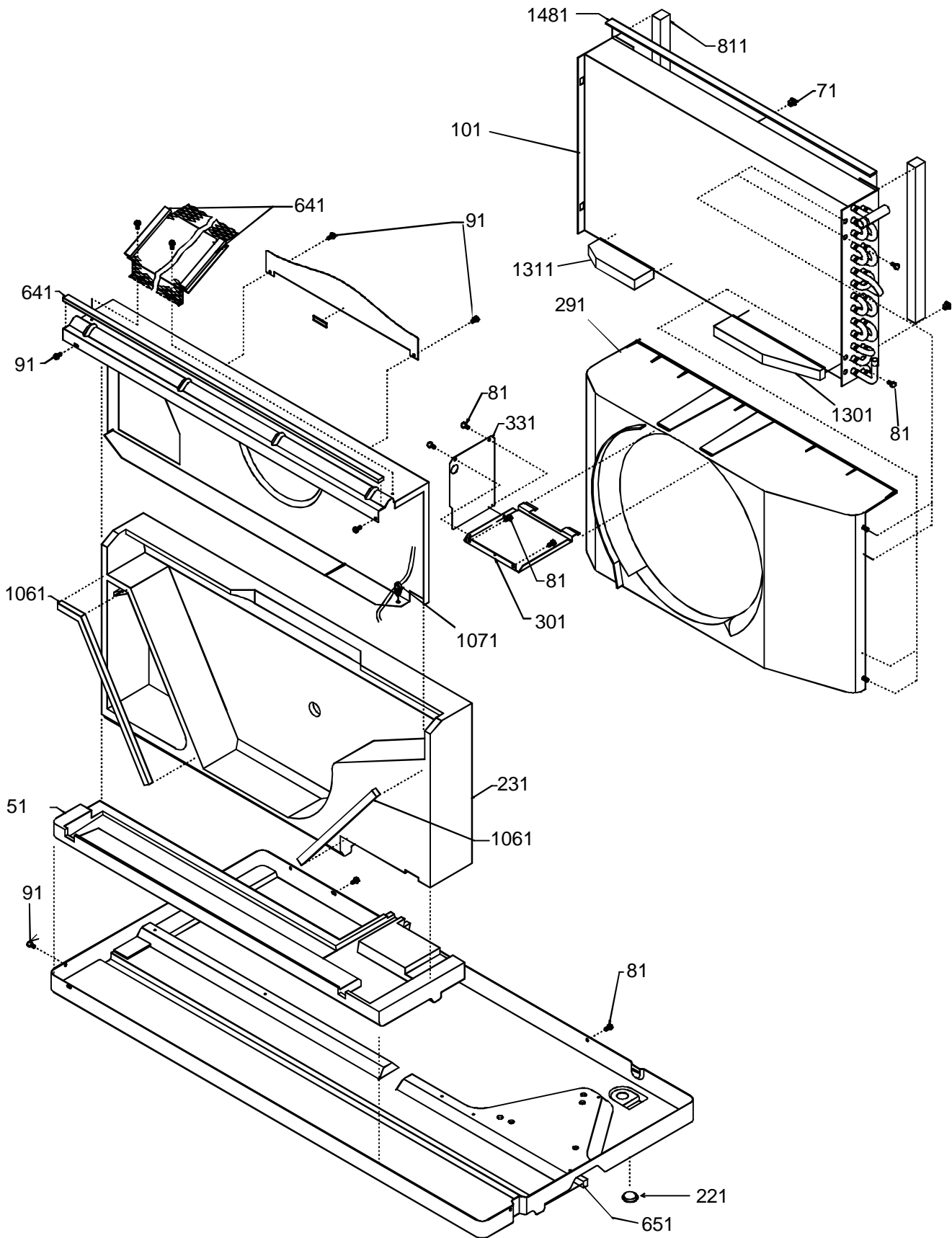
Image 2:

92	M0216716	SCREW-SM (M1, M4, M7, M9)
662	10839823	GASKET 41.00X.50
682	M0275521	SEALER-PLASTIC (QTY AR)
962	11178201	INSUL (M2, M3, M5, M6, M8, M10, M11, M12, M14, M15, M16)
972	11178301	BUMPER (M2, M3, M5, M6, M8, M10, M11, M12, M14, M15, M16)
1332	20208601	INSUL-PARTITION PNL

Expanded Model Nomenclature

M1 - PTC093A00HC	P1225421R
M2 - PTC093A00FC	P1225422R
M3 - PTC093A00GC	P1225423R
M4 - PTC123A00HC	P1225424R
M5 - PTC123A00FC	P1225425R
M6 - PTC123A00GC	P1225426R
M7 - PTC073A00HC	P1225427R
M8 - PTC073A00GC	P1225428R
M9 - PTC153A00HC	P1225429R
M10 - PTC153A00FC	P1225430R
M11 - PTC153A00GC	P1225431R
M12 - PTC153A00NC	P1225441R
M13 - PTC153A00HC	P1225442R
M14 - PTC153A00FC	P1225443R
M15 - PTC153A00GC	P1225444R
M16 - PTC153A00NC	P1225445R

Chassis



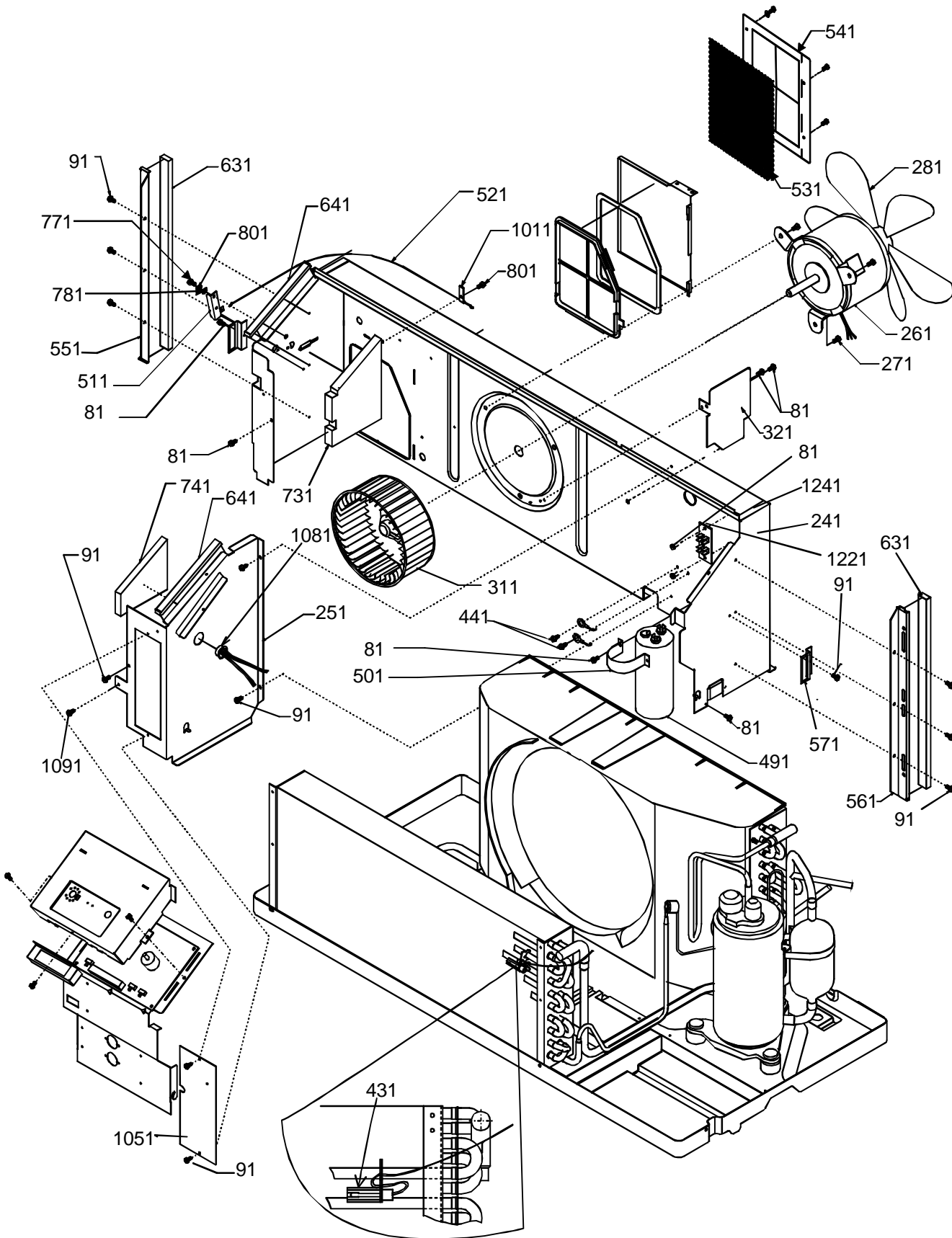
Chassis

Ref. Part No:	No:	Description:	Ref. Part No:	No:	Description:
<i>Image 1:</i>					
51	11044702	PAD-EVAPORATOR			
71	A3315701	GROMMET (QTY 4)			
81	M0211216	SCREW-SM (QTY AR)			
91	M0216716	SCREW-SM (QTY AR)			
101	20007503	COND ASSY (M1, M2, M3, M4, M5, M6, M9, M10, M11, M12, M13, M14, M15, M16)			
101	20007702	COND ASSY (M7, M8)			
221	A3080003	PLUG-BUTTON			
231	11045802	SCROLL-BLOWER			
291	11167301	SHROUD-CONDENSER			
301	11044201	BRACE-TIE (M1, M2, M3, M4, M5, M6, M7, M8, M9, M10, M11, M13, M14, M15, M16)			
331	11046501	BAFFLE-TOP			
641	10839705	GASKET .500 X .250 (QTY AR)			
651	10839808	GASKET-CROSS LINK (QTY AR)			
811	10839712	GASKET .625 X .750 (QTY AR)			
1061	10839706	GASKET .500 X .500 (QTY AR)			
1071	M0120801	CLIP-GUIDE			
1301	20189701	INSUL-COND RH			
1311	20189801	INSUL-COND LH			
1481	10839822	GASKET 24.25X.50			

Expanded Model Nomenclature

M1 - PTC093A00HC	P1225421R
M2 - PTC093A00FC	P1225422R
M3 - PTC093A00GC	P1225423R
M4 - PTC123A00HC	P1225424R
M5 - PTC123A00FC	P1225425R
M6 - PTC123A00GC	P1225426R
M7 - PTC073A00HC	P1225427R
M8 - PTC073A00GC	P1225428R
M9 - PTC153A00HC	P1225429R
M10 - PTC153A00FC	P1225430R
M11 - PTC153A00GC	P1225431R
M12 - PTC153A00NC	P1225441R
M13 - PTC153A00HC	P1225442R
M14 - PTC153A00FC	P1225443R
M15 - PTC153A00GC	P1225444R
M16 - PTC153A00NC	P1225445R

Chassis



Chassis

**Ref. Part
No: No:**

Description:

**Ref. Part
No: No:**

Description:

Image 1:

81	M0211216	SCREW-SM (QTY AR)
91	M0216716	SCREW-SM (QTY AR)
241	11045508	PARTITION PANEL
251	11167504	PANEL-MID PART
261	11114907	MOTOR-FAN (M1, M2, M3, M7, M8)
261	11114909	MOTOR-FAN (M4, M5, M6, M9, M10, M11, M12, M13, M14, M15, M16)
271	M0224956	SCREW-TAP R (QTY 3)
281	20046501	FAN-PL. COND.
311	11044101	WHEEL-BLOWER
321	20245401	BAFFLE-COND INLET (M1, M2, M3, M4, M5, M6, M7, M8, M9, M10, M11, M12, M13, M14, M15)
321	20245402	BAFFLE-PNT COND PTC (M16)
421	11045601	COVER-TERM BLOCK (M1, M2, M3, M4, M5, M6, M7, M8, M9, M10, M11, M12, M13, M14, M15)
431	20075601	CLIP-T'STAT (QTY AR)
441	M0227803	SCREW-TC (QTY 2)
451	11044403	COVER-CONT PANEL
491	D6789051	CAPACITOR (M4, M5, M6)
491	D6789024	CAPACITOR-DUAL (M13, M14, M15, M16)
491	D6789049	CAPACITOR-POLY (M9, M10, M11, M12)
491	D6789054	CAPACITOR-ROUND (M1, M2, M3, M7, M8)
501	C6300503	STRAP-CAP CO PTC (M13, M14, M15, M16)
501	C6300502	STRAP-CAPACITOR CO (M1, M2, M3, M4, M5, M6, M7, M8, M9, M10, M11, M12)
511	11046302	LEVER ARM (M1, M4, M7, M9, M13)
521	11115401	CABLE (M1, M4, M7, M9, M13)
531	11046201	FILTER-VENT
541	11046106	DOOR-PNT VENT PTC (M16)
541	11046105	DOOR-VENT (M1, M2, M3, M4, M5, M6, M7, M8, M9, M10, M11, M12, M13, M14, M15)
551	11044902	SEAL-L SIDE
561	11044901	SEAL-R SIDE
571	11191702	BRKT-PART PAN (QTY 2)
631	10839807	GASKET-CROSS LINK (QTY AR)
641	10839705	GASKET .500 X .250 (QTY AR)
731	11122901	INSUL-LEFT
741	11123001	INSUL-RIGHT
771	M0220757	SCREW-SHLDR (M1, M4, M7, M9, M13)
781	M0273701	WASHER-SPRING (M1, M4, M7, M9, M13)
801	M0270529	WASHER-FLAT (M1, M4, M7, M9, M13)
1011	M0108103	CLAMP-TUBE (M1, M4, M7, M9, M13)
1051	11167602	COVER-ACCESS
1081	A4554801	BUSHING-SNAP (M1, M2, M3, M4, M5, M6, M7, M8, M9, M10, M11, M12, M13, M14, M15)
1081	A4554812	BUSHING-SNAP (M16)
1091	M0216529	SCREW-SM (QTY 2)
1221	B1160701	BOARD-TERM (M2, M3, M5, M6, M8, M10, M11, M12, M14, M15, M16)
1241	10839814	GASKET-CROSS LINK (QTY AR)

Expanded Model Nomenclature

M1 - PTC093A00HC	P1225421R
M2 - PTC093A00FC	P1225422R
M3 - PTC093A00GC	P1225423R
M4 - PTC123A00HC	P1225424R
M5 - PTC123A00FC	P1225425R
M6 - PTC123A00GC	P1225426R
M7 - PTC073A00HC	P1225427R
M8 - PTC073A00GC	P1225428R
M9 - PTC153A00HC	P1225429R
M10 - PTC153A00FC	P1225430R
M11 - PTC153A00GC	P1225431R
M12 - PTC153A00NC	P1225441R
M13 - PTC153A00HC	P1225442R
M14 - PTC153A00FC	P1225443R
M15 - PTC153A00GC	P1225444R
M16 - PTC153A00NC	P1225445R

Compressor/Tubing

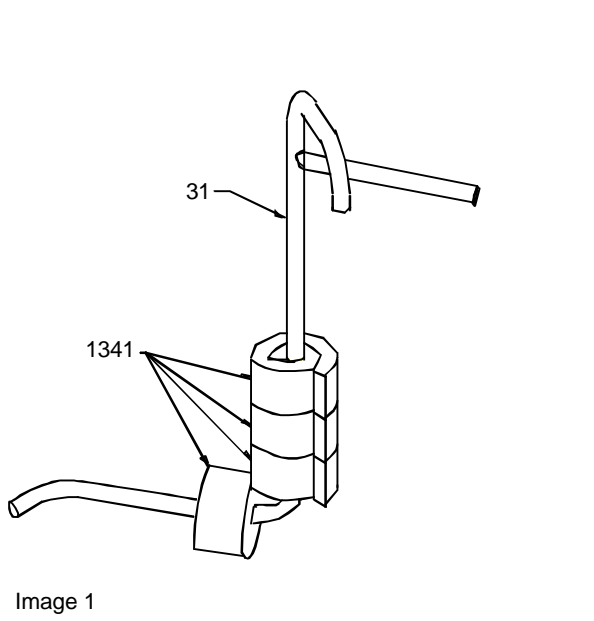
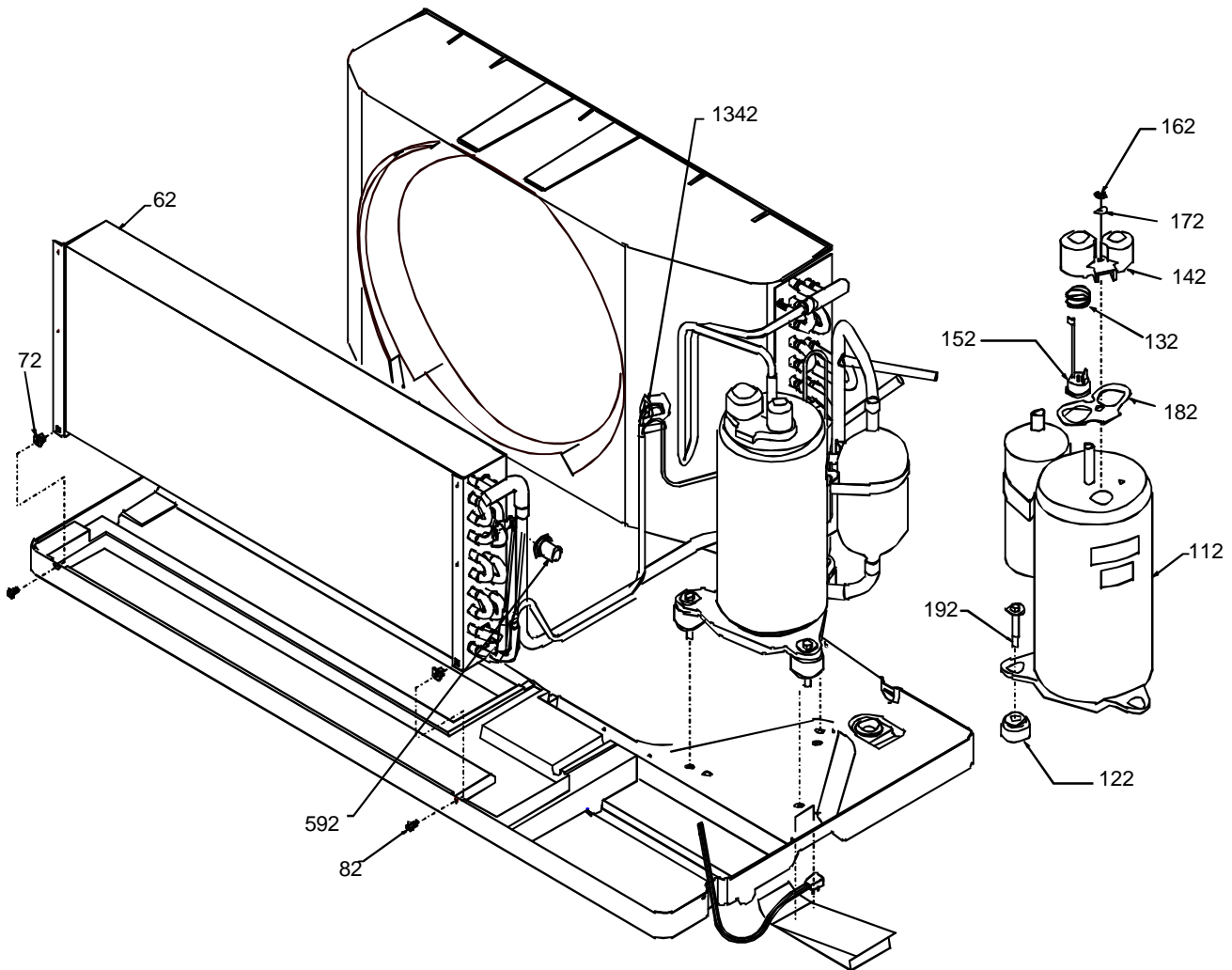


Image 2



Compressor/Tubing

Ref. Part No:	No:	Description:
<i>Image 1:</i>		
31	11144601	TUBE-SUCTION (M4, M5, M6, M9, M10, M11, M12, M13, M14, M15, M16)
31	11194101	TUBE-SUCTION (M7, M8)
31	11194301	TUBE-SUCTION (M1, M2, M3)
71	A3315701	GROMMET (QTY 4)
1341	11154803	SEALER-RUBBER BASED (M1, M2, M3, M7, M8)

Ref. Part No:	No:	Description:
<i>Image 2:</i>		
62	11165603	EVAP ASSY (M4, M5, M6, M9, M10, M11, M12, M13, M14, M15, M16)
62	11165703	EVAP ASSY (M1, M2, M3)
62	11165803	EVAP ASSY (M7, M8)
72	A3315701	GROMMET (QTY 4)
82	M0211216	SCREW-SM (QTY AR)
112	D6926120	COMP 2K21S236C-7A (M13, M14, M15, M16)
112	D6926116	COMP 2K21S3R236A-7A (M9, M10, M11, M12)
112	D6985807	COMP-PN 2P17S3R236A (M4, M5, M6)
112	D6887709	COMP-PN 2R10S3R236A (M7, M8)
112	D6887711	COMP-PN 2R13S3R236A (M1, M2, M3)
122	A3448601	GROMMET (M4, M5, M6, M9, M10, M11, M12, M13, M14, M15, M16)
122	A4622801	GROMMET (M1, M2, M3, M7, M8)
132	A3436901	SPRING-OVERLOAD
142	20120101	CAP-COMP TERM COVER (M1, M2, M3, M4, M5, M6, M7, M8, M9, M10, M11)
142	20120103	COVER-TERM (M12, M13, M14, M15, M16)
152	D4976682	OVERLOAD (M13, M14, M15, M16)
152	D6961607	OVERLOAD (M9, M10, M11)
152	D6961612	OVERLOAD (M4, M5, M6, M12)
152	D6961636	OVERLOAD (M7, M8)
152	D6961639	OVERLOAD (M1, M2, M3)
162	A3436601	NUT-TERM COVER
172	A3436801	GASKET-NUT
182	A3436701	GASKET-TERM COVER
192	M0253610	SCREW-SHLDR (M4, M9, M10, M11, M16)
192	M0253610	SCREW-SHLDR (M5, M6, M12, M13, M14, M15)
192	M0253661	SCREW-SHLDR (M1, M2, M3, M7, M8)
592	20295702	THERMISTOR
1342	11154803	SEALER-RUBBER BASED (M4, M5, M6, M9, M10, M11, M12, M13, M14, M15, M16)

Ref. Part No:	No:	Description:
Expanded Model Nomenclature		
M1 - PTC093A00HC		P1225421R
M2 - PTC093A00FC		P1225422R
M3 - PTC093A00GC		P1225423R
M4 - PTC123A00HC		P1225424R
M5 - PTC123A00FC		P1225425R
M6 - PTC123A00GC		P1225426R
M7 - PTC073A00HC		P1225427R
M8 - PTC073A00GC		P1225428R
M9 - PTC153A00HC		P1225429R
M10 - PTC153A00FC		P1225430R
M11 - PTC153A00GC		P1225431R
M12 - PTC153A00NC		P1225441R
M13 - PTC153A00HC		P1225442R
M14 - PTC153A00FC		P1225443R
M15 - PTC153A00GC		P1225444R
M16 - PTC153A00NC		P1225445R

Power Vent/Door & Control Panel

Ref. Part

No: No: Description:

Ref. Part

No: No: Description:

Image 1:

81	M0211216	SCREW-SM (QTY AR)
91	M0216716	SCREW-SM (QTY AR)
191	B1378501	XFMR
531	11046201	FILTER-VENT
541	11046106	DOOR-PNT VENT PTC (M16)
541	11046105	DOOR-VENT (M1, M2, M3, M4, M5, M6, M7, M8, M9, M10, M11, M12, M13, M14, M15)
551	11044902	SEAL-L SIDE
851	11135801	BRKT-R FAN PTC (M14)
861	11145801	BRKT-L FAN PTC (M14)
871	11149201	FAN-MUFFIN (M14)
881	M0272802	WASHER-LOCK (M14)
891	M0211011	SCREW-SM (M14)
901	11166302	BRKT-PNT PWR VNT PTC (M12, M16)
901	11166301	BRKT-PWR VENT PTC (M14, M15, M16)
911	M0370005	RELIEF-STRAIN (M14)
921	11166101	BRKT-MOTOR PTC (M14, M15, M16)
921	11166102	BRKT-PNT MOTOR PTC (M12, M16)
931	11172801	MOTOR-POWER-VENT/DOOR (M12, M13, M14, M15, M16)
941	11166201	BRKT-COVER PTC (M14, M15, M16)
941	11166202	BRKT-PNT COVER PTC (M12, M16)
981	11166401	SPRING-EXTENSION (M12, M14, M15, M16)

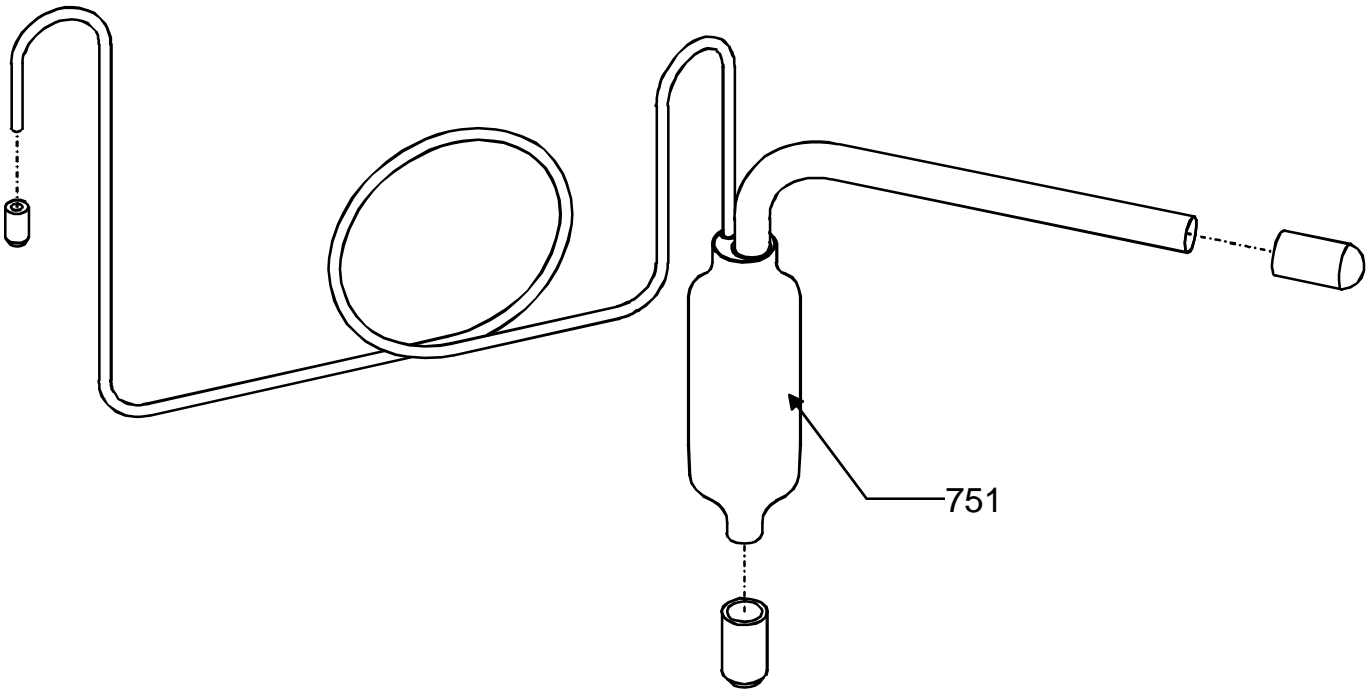
Image 2:

12	11044504	PANEL-CONTROL (M1, M2, M3, M4, M5, M6, M7, M8, M9, M10, M11, M13, M14, M15)
12	11044505	PANEL-CONTROL PTC (M16)
22	20295502	PC BOARD
32	M0216529	SCREW-SM (QTY 4)
42	M0590702	SUPPORT (QTY 2)
52	10618849	WIRE-JUMPER GN1
62	M0227803	SCREW-TC
82	C8873917	RELAY
132	M0282005	NUT-KEPS (QTY AR)
142	M0216716	SCREW-SM (QTY AR)
142	B1378501	TRANSFORMER (M1, M2, M3, M4, M5, M6, M7, M8, M9, M10, M11, M12, M13, M14, M15)
252	B1337701	SWITCH-PADDLE (M2, M3, M5, M6, M8, M10, M11, M12, M14, M15, M16)
262	C8873932	RELAY (M2, M3, M5, M6, M8, M10, M11, M12, M13, M14, M15, M16)
592	20295701	THERMISTOR

Expanded Model Nomenclature

M1 - PTC093A00HC	P1225421R
M2 - PTC093A00FC	P1225422R
M3 - PTC093A00GC	P1225423R
M4 - PTC123A00HC	P1225424R
M5 - PTC123A00FC	P1225425R
M6 - PTC123A00GC	P1225426R
M7 - PTC073A00HC	P1225427R
M8 - PTC073A00GC	P1225428R
M9 - PTC153A00HC	P1225429R
M10 - PTC153A00FC	P1225430R
M11 - PTC153A00GC	P1225431R
M12 - PTC153A00NC	P1225441R
M13 - PTC153A00HC	P1225442R
M14 - PTC153A00FC	P1225443R
M15 - PTC153A00GC	P1225444R
M16 - PTC153A00NC	P1225445R

Capillary Tubing



Capillary Tubing

Ref. Part

No: No:

Description:

Ref. Part

No: No:

Description:

Image 1:

751	20284901	DRYER-FILTER (M7, M8)
751	20284902	DRYER-FILTER (M1, M2, M3)
751	20284904	DRYER-FILTER (M4, M5, M6)
751	20284906	DRYER-FILTER (M9, M10, M11, M12, M13, M14, M15, M16)

Expanded Model Nomenclature

M1 - PTC093A00HC	P1225421R
M2 - PTC093A00FC	P1225422R
M3 - PTC093A00GC	P1225423R
M4 - PTC123A00HC	P1225424R
M5 - PTC123A00FC	P1225425R
M6 - PTC123A00GC	P1225426R
M7 - PTC073A00HC	P1225427R
M8 - PTC073A00GC	P1225428R
M9 - PTC153A00HC	P1225429R
M10 - PTC153A00FC	P1225430R
M11 - PTC153A00GC	P1225431R
M12 - PTC153A00NC	P1225441R
M13 - PTC153A00HC	P1225442R
M14 - PTC153A00FC	P1225443R
M15 - PTC153A00GC	P1225444R
M16 - PTC153A00NC	P1225445R