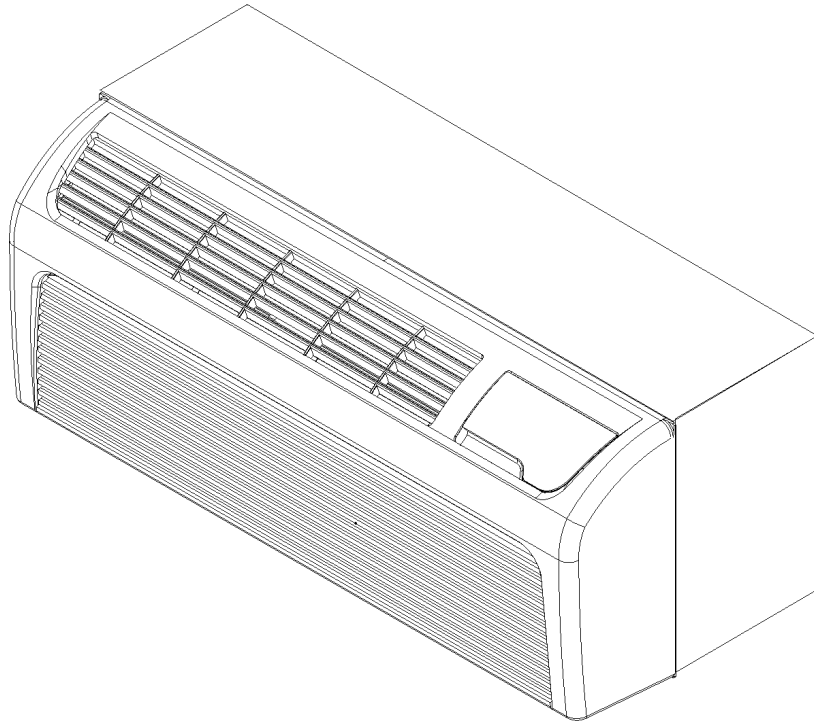


DRYC*AB ActivDry™ PTAC

DRYC073B25AMAB
DRYC073B25CMAB
DRYC073B35AMAB
DRYC073B35CMAB
DRYC074B25AMAB
DRYC074B25CMAB
DRYC074B35AMAB
DRYC074B35CMAB
DRYC093B00CMAB
DRYC093B25AMAB
DRYC093B25CMAB
DRYC093B35AMAB
DRYC093B35AWAB
DRYC093B35CMAB
DRYC094B25CMAB
DRYC094B35AMAB
DRYC094B35CMAB
DRYC123B25AMAB
DRYC123B25CMAB
DRYC123B35AMAB
DRYC123B35CMAB
DRYC124B25AMAB
DRYC124B25CMAB
DRYC124B35AMAB
DRYC124B35CMAB



Amana is a registered trademark of Maytag Corporation or its related companies and is used under license to Goodman Company, L.P., Houston, TX. All rights reserved.

This manual is to be used by qualified technicians only.

This manual replaces RP-469C.

© 2007-2009 Goodman Company, L.P. ♦ 5151 San Felipe, Suite 500 ♦ Houston, TX 77056

Important Information

Index

Functional Parts List	3
Illustration and Parts	4 - 9

Views shown are for parts illustrations only, not servicing procedures.

Rev.D: Added model DRYC093B00CMAB.

Text Codes:

AR - As Required

NA - Not Available

NS - Not Shown

00000000 - See Note

QTY - Quantity Example (QTY 3) (If Quantity not shown, Quantity = 1)

M - Model Example (M1) (If M Code not shown, then part is used on all Models)

Expanded Model Nomenclature:

Example M1 - Model#1 M2 - Model#2 M3 - Model#3

Goodman Company, L.P. is not responsible for personal injury or property damage resulting from improper service. Review all service information before beginning repairs.

Warranty service must be performed by an authorized technician, using authorized factory parts. If service is required after the warranty expires, Goodman Company, L.P. also recommends contacting an authorized technician and using authorized factory parts.

Goodman Company, L.P. reserves the right to discontinue, or change at any time, specifications or designs without notice or without incurring obligations.

For assistance within the U.S.A. contact:

Consumer Affairs Department
Goodman Company, L.P.
7401 Security Way
Houston, Texas 77040
877-254-4729-Telephone
713-863-2382-Facsimile

For assistance outside the U.S.A. contact:

International Division
Goodman Company, L.P.
7401 Security Way
Houston, Texas 77040
713-861-2500-Telephone
713-863-2382-Facsimile

Functional Parts

Part

No: Description:

Expanded Model Nomenclature

CAP050150370RSS	CAPACITOR 5/15/370V (M1, M2, M3, M4)
CAP050150440RSS	CAPACITOR 5/15/440V (M5, M6, M7, M8)
CAP050250440RSS	CAPACITOR 5/25/440V (M15, M17)
CAP050250440RSS	CAPACITOR 5/25/440V (M16)
CAP050300440RSS	CAPACITOR 5/30/370V (M22, M23, M24, M25)
CAP050300370RSS	CAPACITOR 5/30/370V (M9, M10, M11, M12, M13, M14, M18, M19, M20, M21)
2P19S3R276A-1AS	COMPRESSOR 12000, 265/277/60 (M22, M23, M24, M25)
2P19S3R236A-1AS	COMPRESSOR 13K, 208/230/60 (M18, M19, M20, M21)
2R11S3R236A-6AS	COMPRESSOR 7000, 208/230/60 (M1, M2, M3, M4)
2R11S3R276A-6AS	COMPRESSOR 7000, 265/60 (M5, M6, M7, M8)
2P14S3R236A-1AS	COMPRESSOR 9000, 208/230/60 (M9, M10, M11, M12, M13, M14)
2P14S3R276A-1AS	COMPRESSOR 9000, 265/277/60 (M15, M16, M17)
RSKP0010	CONTROL BOARD, M61 WIRELESS KIT
1261401	DIGITENNA (M13)
0131P00003S	FAN MOTOR 100 W, 2 SP, 6 PL (M22, M23, M24, M25)
0131P00002S	FAN MOTOR 100 W, 2 SP, 6 PL (M18, M19, M20, M21)
0131P00001S	FAN MOTOR 40 W, 2 SP, 8 PL (M5, M6, M7, M8, M15, M16, M17)
0131P00000S	FAN MOTOR 40 W, 2 SP, 8 PL (M1, M2, M3, M4, M9, M10, M11, M12, M13, M14)
22312902	HEATER 3 2.5 KW ASSY (M1, M2, M10, M11, M18, M19)
22312903	HEATER 3 3.5 KW ASSY (M3, M4, M12, M13, M14, M20, M21)
22312906	HEATER 4 2.5 KW ASSY (M5, M6, M15, M22, M23)
22312907	HEATER 4 3.7 KW ASSY (M7, M8, M16, M17, M24, M25)
0130P00038	THERMISTOR-DISCHARGE
0130P00047	THERMISTOR-INDOOR AMBIENT
0130P00033	THERMISTOR-INDOOR COIL
0130P00039	THERMISTOR-OUTDOOR AMBIENT (M13)
20512501	TRANSFORMER

M1 - DRYC073B25AMAB
M2 - DRYC073B25CMAB
M3 - DRYC073B35AMAB
M4 - DRYC073B35CMAB
M5 - DRYC074B25AMAB
M6 - DRYC074B25CMAB
M7 - DRYC074B35AMAB
M8 - DRYC074B35CMAB
M9 - DRYC093B00CMAB
M10 - DRYC093B25AMAB
M11 - DRYC093B25CMAB
M12 - DRYC093B35AMAB
M13 - DRYC093B35AWAB
M14 - DRYC093B35CMAB
M15 - DRYC094B25CMAB
M16 - DRYC094B35AMAB
M17 - DRYC094B35CMAB
M18 - DRYC123B25AMAB
M19 - DRYC123B25CMAB
M20 - DRYC123B35AMAB
M21 - DRYC123B35CMAB
M22 - DRYC124B25AMAB
M23 - DRYC124B25CMAB
M24 - DRYC124B35AMAB
M25 - DRYC124B35CMAB

SPECIAL PARTS

IO-266	CHASSIS TO WALL SLEEVE INSERT PAGE
IO-692A	CONFIGURATION SETTINGS
20490201	INSPECTION SHEET-SLEEVE/DRAIN
IO-293C	INSTALLATION INSTRUCTIONS
RP-469D	REPAIR PARTS MANUAL

Front Assy/Chassis/Cap Weld/Compressor

Image 1

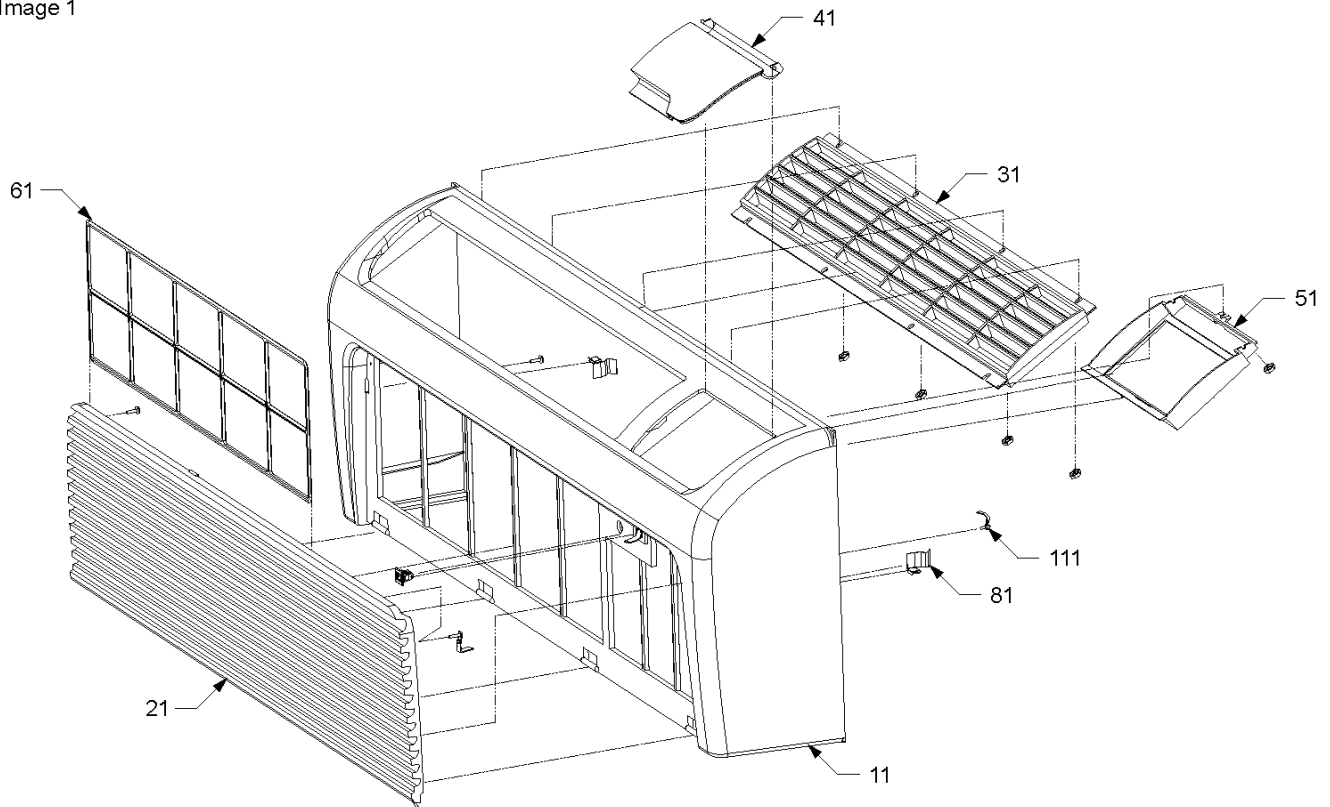
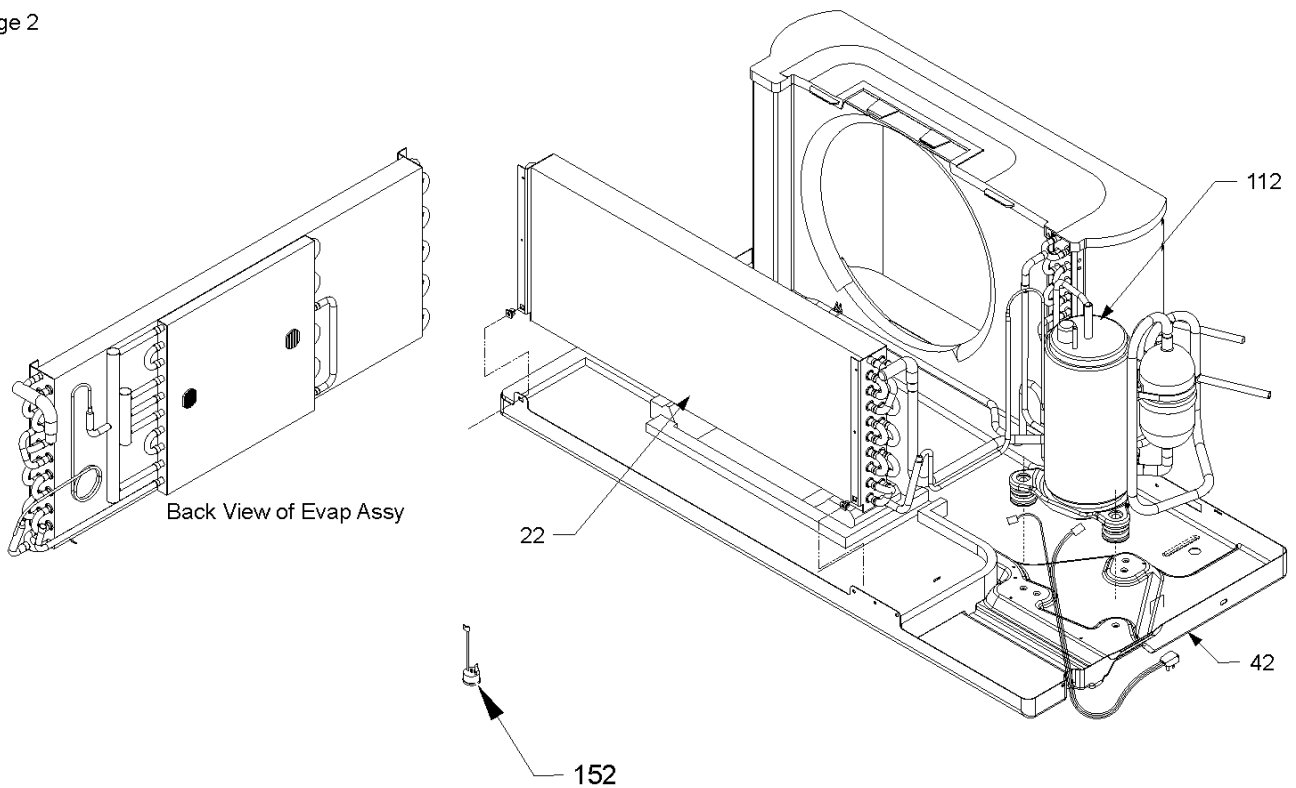


Image 2



Front Assy/Chassis/Cap Weld/Compressor

Ref. Part No:	No:	Description:	Ref. Part No:	No:	Description:
<i>Image 1:</i>			Expanded Model Nomenclature		
11	0261P00000A	FRONT FRAME	M1	-	DRYC073B25AMAB
21	20415402	INTAKE GRILLE	M2	-	DRYC073B25CMAB
31	20415301	EXHAUST GRILLE	M3	-	DRYC073B35AMAB
41	20415901	DOOR ASSY	M4	-	DRYC073B35CMAB
51	20415601	CONTROL HOUSING	M5	-	DRYC074B25AMAB
61	20415801	FILTER	M6	-	DRYC074B25CMAB
81	11045102	SIDE CLIP (QTY 2)	M7	-	DRYC074B35AMAB
111	0161P00002P	STRAP-INLET GRILLE RESTRAINT (QTY 2)	M8	-	DRYC074B35CMAB
<i>Image 2:</i>			M9	-	DRYC093B00CMAB
22	0202P00014S	TUBING ASSY, EVAP COIL (M18, M19, M20, M21, M22, M23, M24, M25)	M10	-	DRYC093B25AMAB
22	0202P00022S	TUBING ASSY, EVAP COIL (M9, M10, M11, M12, M13, M14, M15, M16, M17)	M11	-	DRYC093B25CMAB
22	0202P00026S	TUBING ASSY, EVAP COIL (M1, M2, M3, M4, M5, M6, M7, M8)	M12	-	DRYC093B35AMAB
42	20403508	BASE PAN	M13	-	DRYC093B35AWAB
112	2P19S3R276A-1AS	COMPRESSOR 12000, 265/277/60 (M22, M23, M24, M25)	M14	-	DRYC093B35CMAB
112	2P19S3R236A-1AS	COMPRESSOR 13K, 208/230/60 (M18, M19, M20, M21)	M15	-	DRYC094B25CMAB
112	2R11S3R236A-6AS	COMPRESSOR 7000, 208/230/60 (M1, M2, M3, M4)	M16	-	DRYC094B35AMAB
112	2R11S3R276A-6AS	COMPRESSOR 7000, 265/60 (M5, M6, M7, M8)	M17	-	DRYC094B35CMAB
112	2P14S3R236A-1AS	COMPRESSOR 9000, 208/230/60 (M9, M10, M11, M12, M13, M14)	M18	-	DRYC123B25AMAB
112	2P14S3R276A-1AS	COMPRESSOR 9000, 265/277/60 (M15, M16, M17)	M19	-	DRYC123B25CMAB
152	0130P00031	OVERLOAD (M22, M23, M24, M25)	M20	-	DRYC123B35AMAB
152	D6961603	OVERLOAD (M18, M19, M20, M21)	M21	-	DRYC123B35CMAB
152	D6961637	OVERLOAD (M5, M6, M7, M8)	M22	-	DRYC124B25AMAB
152	D6961641	OVERLOAD (M9, M10, M11, M12, M13, M14)	M23	-	DRYC124B25CMAB
152	D6961642	OVERLOAD (M1, M2, M3, M4, M15, M16, M17)	M24	-	DRYC124B35AMAB
NS	A3448602	COMPRESSOR GROMMET (M9, M10, M11, M12, M13, M14, M15, M16, M17, M18, M19, M20, M21, M22, M23, M24, M25)	M25	-	DRYC124B35CMAB
NS	A4622801	COMPRESSOR GROMMET (M1, M2, M3, M4, M5, M6, M7, M8)			
NS	M0253610	SHOULDER SCREW (M9, M10, M11, M12, M13, M14, M15, M16, M17, M18, M19, M20, M21, M22, M23, M24, M25)			
NS	M0253661	SHOULDER SCREW (M1, M2, M3, M4, M5, M6, M7, M8)			

Chassis/Control Panel

Image 1

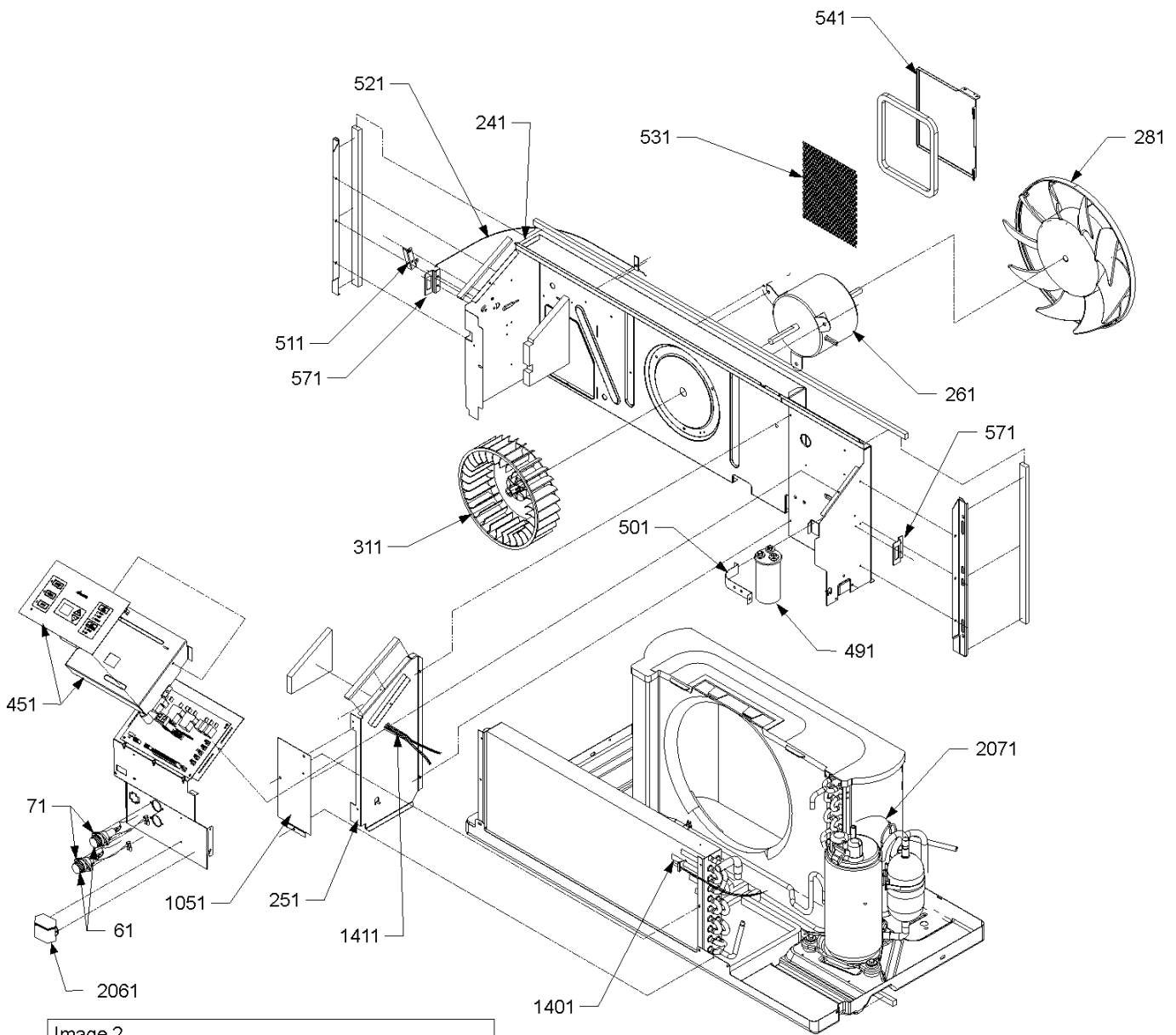
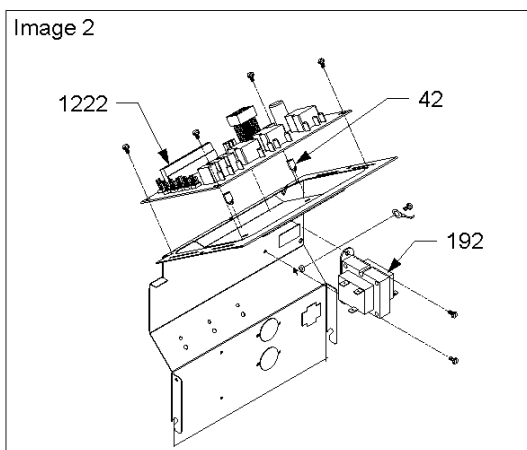


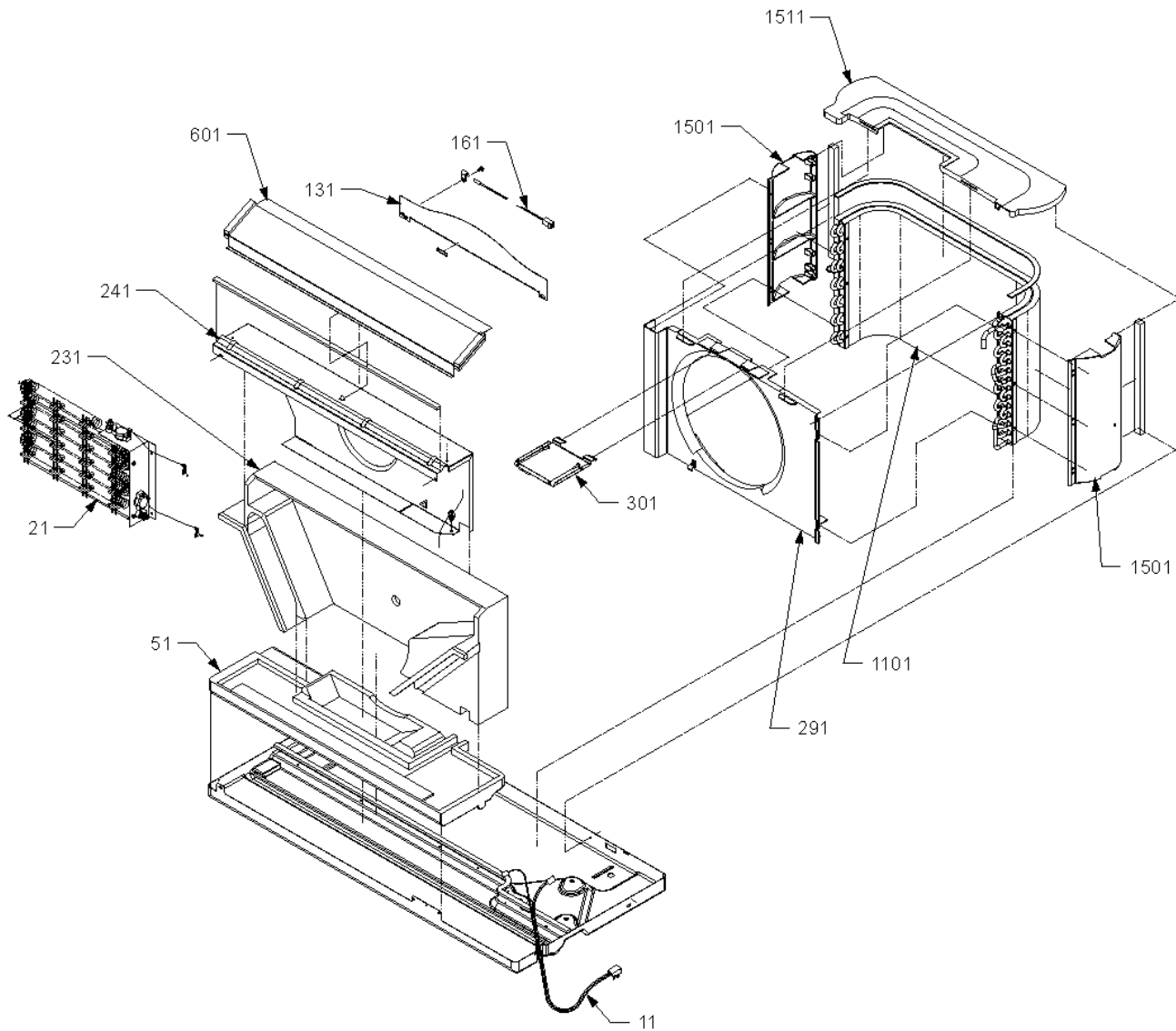
Image 2



Chassis/Control Panel

Ref. Part No:	No:	Description:	Ref. Part No:	No:	Description:
<i>Image 1:</i>			Expanded Model Nomenclature		
61	C6476001	BAYONET FUSE HOLDER (M5, M6, M15, M22, M23)	M1 - DRYC073B25AMAB		
61	C6476002	BAYONET FUSE HOLDER (M7, M8, M16, M17, M24, M25)	M2 - DRYC073B25CMAB		
71	A3410402	FUSE 15A (M5, M6, M15, M22, M23)	M3 - DRYC073B35AMAB		
71	A3410403	FUSE 20A (M7, M8, M16, M17, M24, M25)	M4 - DRYC073B35CMAB		
241	0121P00041DG	PARTITION PANEL	M5 - DRYC074B25AMAB		
251	20403301	MID PARTITION PANEL	M6 - DRYC074B25CMAB		
261	0131P00002S	FAN MOTOR 100 W, 2 SP, 6 PL (M18, M19, M20, M21)	M7 - DRYC074B35AMAB		
261	0131P00003S	FAN MOTOR 100 W, 2 SP, 6 PL (M22, M23, M24, M25)	M8 - DRYC074B35CMAB		
261	0131P00000S	FAN MOTOR 40 W, 2 SP, 8 PL (M1, M2, M3, M4, M9, M10, M11, M12, M13, M14)	M9 - DRYC093B00CMAB		
261	0131P00001S	FAN MOTOR 40 W, 2 SP, 8 PL (M5, M6, M7, M8, M15, M16, M17)	M10 - DRYC093B25AMAB		
281	20414601	CONDENSER FAN	M11 - DRYC093B25CMAB		
311	11044101	BLOWER WHEEL	M12 - DRYC093B35AMAB		
451	RSKP0005	CONTROL PANEL COVER AND MEMBRANE	M13 - DRYC093B35AWAB		
491	CAP050150370RSS	CAPACITOR 5/15/370V (M1, M2, M3, M4)	M14 - DRYC093B35CMAB		
491	CAP050150440RSS	CAPACITOR 5/15/440V (M5, M6, M7, M8)	M15 - DRYC094B25CMAB		
491	CAP050250440RSS	CAPACITOR 5/25/440V (M15, M17)	M16 - DRYC094B35AMAB		
491	CAP050250440RSS	CAPACITOR 5/25/440V (M16)	M17 - DRYC094B35CMAB		
491	CAP050300370RSS	CAPACITOR 5/30/370V (M9, M10, M11, M12, M13, M14, M18, M19, M20, M21)	M18 - DRYC123B25AMAB		
491	CAP050300440RSS	CAPACITOR 5/30/370V (M22, M23, M24, M25)	M19 - DRYC123B25CMAB		
501	C6300502	CAPACITOR STRAP	M20 - DRYC123B35AMAB		
511	11046302	LEVER ARM	M21 - DRYC123B35CMAB		
521	11115401	CABLE	M22 - DRYC124B25AMAB		
531	20304003	PROTECTION SHIELD	M23 - DRYC124B25CMAB		
541	11046105PDG	VENT DOOR	M24 - DRYC124B35AMAB		
571	11191703	PARTITION PANEL BRACKET (QTY 2)	M25 - DRYC124B35CMAB		
1051	20410801	ACCESS COVER			
1401	0130P00047	THERMISTOR-INDOOR AMBIENT			
1411	0130P00033	THERMISTOR-INDOOR COIL			
2061	1261401	DIGITENNA (M13)			
2071	0130P00039	THERMISTOR-OUTDOOR AMBIENT (M13)			
<i>Image 2:</i>					
42	M0590702	SUPPORT (QTY 2)			
192	20512501	TRANSFORMER			
1222	RSKP0010	CONTROL BOARD, M61 WIRELESS KIT			

Chassis/Heater



Chassis/Heater

Ref. Part No:	No:	Description:	Ref. Part No:	No:	Description:
<i>Image 1:</i>			Expanded Model Nomenclature		
11	0130P00006S	CORD 250 VAC, 15A (LCDI) (M1, M2, M9, M10, M11, M15, M16, M17, M18, M19, M22, M23, M24, M25)	M1 -	DRYC073B25AMAB	
11	0130P00007S	CORD 250 VAC, 20A (LCDI) (M3, M4)	M2 -	DRYC073B25CMAB	
11	11114701	CORD 277 VAC, 20A (M5, M6, M7, M8, M12, M13, M14, M20, M21)	M3 -	DRYC073B35AMAB	
21	22312902	HEATER 3 2.5 KW ASSY (M1, M2, M10, M11, M18, M19)	M4 -	DRYC073B35CMAB	
21	22312903	HEATER 3 3.5 KW ASSY (M3, M4, M12, M13, M14, M20, M21)	M5 -	DRYC074B25AMAB	
21	22312906	HEATER 4 2.5 KW ASSY (M5, M6, M15, M22, M23)	M6 -	DRYC074B25CMAB	
21	22312907	HEATER 4 3.7 KW ASSY (M7, M8, M16, M17, M24, M25)	M7 -	DRYC074B35AMAB	
51	B20403802	EVAPORATOR PAD	M8 -	DRYC074B35CMAB	
131	20515304	BLOWER EXTERNAL INTAKE	M9 -	DRYC093B00CMAB	
161	0130P000038	THERMISTOR-DISCHARGE	M10 -	DRYC093B25AMAB	
231	B20356703	BLOWER SCROLL	M11 -	DRYC093B25CMAB	
241	20515301	EXTERNAL BLOWER INTAKE	M12 -	DRYC093B35AMAB	
291	20401301	CONDENSER SHROUD	M13 -	DRYC093B35AWAB	
301	11044201PDG	TIE BRACE	M14 -	DRYC093B35CMAB	
601	11123911	DISCHARGE SCREEN	M15 -	DRYC094B25CMAB	
1101	0201P00004BND	TUBING ASSY, COND COIL (M1, M3, M5, M7, M10, M12, M13, M16)	M16 -	DRYC094B35AMAB	
1101	0201P00006BND	TUBING ASSY, COND COIL (M18, M20, M22, M24)	M17 -	DRYC094B35CMAB	
1101	0201P00017DGS	TUBING ASSY, COND COIL (M2, M4, M6, M8, M9, M11, M14, M15, M17)	M18 -	DRYC123B25AMAB	
1101	0201P00018DGS	TUBING ASSY, COND COIL (M19, M21, M23, M25)	M19 -	DRYC123B25CMAB	
1501	20357001	CONDENSER SIDE COVER (QTY 2)	M20 -	DRYC123B35AMAB	
1511	20396701	CONDENSER TOP COVER	M21 -	DRYC123B35CMAB	
			M22 -	DRYC124B25AMAB	
			M23 -	DRYC124B25CMAB	
			M24 -	DRYC124B35AMAB	
			M25 -	DRYC124B35CMAB	

