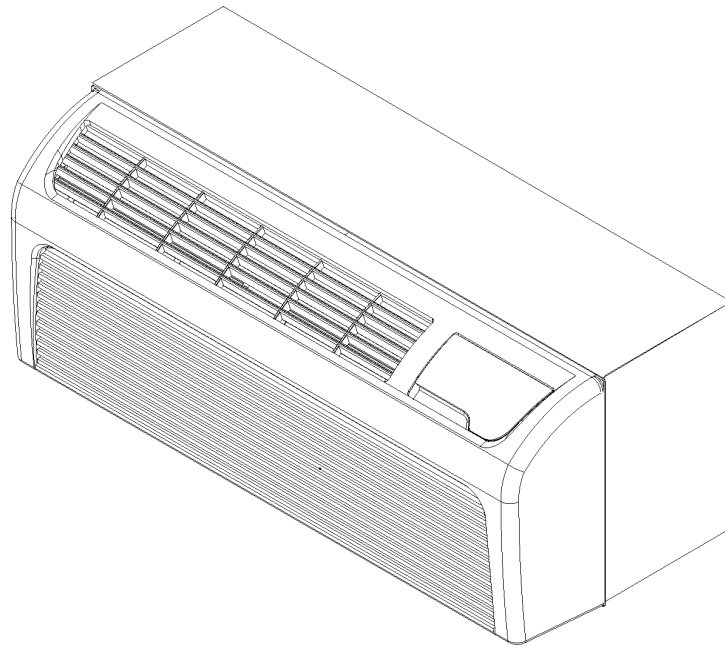


DRYC* ActivDry™ Packaged Terminal Air Conditioners

DRYC073B25AMAA
DRYC073B25CMAA
DRYC073B35AMAA
DRYC073B35CMAA
DRYC093B25AMAA
DRYC093B25CMAA
DRYC093B35AMAA
DRYC093B35CMAA
DRYC094B25CMAA
DRYC094B35AMAA
DRYC094B35CMAA
DRYC123B25AMAA
DRYC123B25CMAA
DRYC123B35AMAA
DRYC123B35CMAA
DRYC124B25AMAA
DRYC124B25CMAA
DRYC124B35AMAA
DRYC124B35CMAA



Important Information

Index

Functional Parts List	3
Illustration and Parts	4 - 9

Views shown are for parts illustrations only, not servicing procedures

Rev. B: Added 094 & 124 models.

Text Codes:

AR - As Required

NA - Not Available

NS - Not Shown

00000000 - See Note

QTY - Quantity Example (QTY 3) (If Quantity not shown, Quantity = 1)

M - Model Example (M1) (If M Code not shown, then part is used on all Models)

Expanded Model Nomenclature:

Example M1 - Model#1 M2 - Model#2 M3 - Model#3

Goodman Company, L.P. is not responsible for personal injury or property damage resulting from improper service. Review all service information before beginning repairs.

Warranty service must be performed by an authorized technician, using authorized factory parts. If service is required after the warranty expires, Goodman Company, L.P. also recommends contacting an authorized technician and using authorized factory parts.

Goodman Company, L.P. reserves the right to discontinue, or change at any time, specifications or designs without notice or without incurring obligations.

For assistance within the U.S.A. contact:

Consumer Affairs Department
Goodman Company, L.P.
7401 Security Way
Houston, Texas 77040
877-254-4729-Telephone
713-863-2382-Facsimile

For assistance outside the U.S.A. contact:

International Division
Goodman Company, L.P.
7401 Security Way
Houston, Texas 77040
713-861-2500-Telephone
713-863-2382-Facsimile

Functional Parts

Part

No: Description:

Part No:	Description:	Part No:	Description:
0201P00004DGS	ASSY, COND (M2, M4, M6, M8, M9, M11)	D6961642	OVERLOAD (M1, M2, M3, M4, M9, M10, M11)
0201P00006DGS	ASSY, COND (M13, M15, M17, M19)	20295708	THERMISTOR-DISCHARGE
0201P00004S	ASSY, COND BENT (M1, M2, M3, M4, M5, M6, M7, M8, M9, M10, M11)	20295706	THERMISTOR-INDOOR AMBIENT (M1, M2, M3, M4, M5, M6, M7, M8, M9, M10, M11, M12, M13, M14, M15)
0201P00006DGS	ASSY, COND BENT (M12, M13, M14, M15, M16, M17, M18, M19)	0130P00032	THERMISTOR-INDOOR AMBIENT (M16, M17, M18, M19)
0202P00014S	ASSY, EVAP DRY 12K (M12, M13, M14, M15, M16, M17, M18, M19)	20295707	THERMISTOR-INDOOR COIL
0202P00019S	ASSY, EVAP DRY 7K (M1, M2, M3, M4)	20512501	TRANSFORMER
0202P00015S	ASSY, EVAP DRY 9K (M5, M6, M7, M8, M9, M10, M11)		
CAP050150370RS	CAPACITOR 5/15/370V (M1, M2, M3, M4)		
CAP050250370RS	CAPACITOR 5/25/370V (M9, M10, M11)		
CAP050300370RS	CAPACITOR 5/30/370V (M5, M6, M7, M8, M12, M13, M14, M15)		
CAP050300440RS	CAPACITOR 5/30/440V (M16, M17, M18, M19)		
0210P00012	CAPILLARY WELD (M12, M13, M14, M15, M16, M17, M18, M19)		
0210P00014	CAPILLARY WELD (M5, M6, M7, M8, M9, M10, M11)		
0210P00024	CAPILLARY WELD (M1, M2, M3, M4)		
2P19S3R276A-1AS	COMPRESSOR 12K, 265/277V, 60HZ, R22 (M16, M17, M18, M19)		
2P19S3R236A-1AS	COMPRESSOR 13K, 208/230V, 60HZ, R22 (M12, M13, M14, M15)		
2R11S3R236A-6AS	COMPRESSOR 7K, 208/230V, 60HZ, R22 (M1, M2, M3, M4)		
2P14S3R236A-1AS	COMPRESSOR 9K, 208/230V, 60HZ, R22 (M5, M6, M7, M8)		
2P14S3R276A-1AS	COMPRESSOR 9K, 265/277V, 60HZ, R22 (M9, M10, M11)		
RSKP0004	CONTROL BOARD-M61 WIRELESS		
A3410402	FUSE-15A (M9, M16, M17)		
A3410403	FUSE-20A (M10, M11, M18, M19)		
22312902	HEATER 3 2.5 KW ASSY (M1, M2, M5, M6, M12)		
22312903	HEATER 3 3.5 KW ASSY (M3, M4, M7, M8, M13, M14, M15)		
22312906	HEATER 4 2.5 KW ASSY (M9, M16, M17)		
22312907	HEATER 4 3.7 KW ASSY (M10, M11, M18, M19)		
0131P00002S	MOTOR 100 W, 2 SP, 6 PL (M12, M13, M14, M15)		
0131P00003S	MOTOR 100 W, 2 SP, 6 PL (M16, M17, M18, M19)		
0131P00001S	MOTOR 40 W, 2 SP, 8 PL (M9, M10, M11)		
0131P00000S	MOTOR 40 W, 2 SP, 8 PL (M1, M2, M3, M4, M5, M6, M7, M8)		
0130P00031	OVERLOAD (M16, M17, M18, M19)		
D6961641	OVERLOAD (M5, M6, M7, M8)		
D6961603	OVERLOAD (M12, M13, M14, M15)		

SPECIAL PARTS

20228101	CONFIGURATION SETTINGS
20490201	INSPECTION SHEET-SLEEVE/DRAIN
RP-394A	REPAIR PARTS MANUAL
IO-293B	USER'S MANUAL

Expanded Model Nomenclature

M1 - DRYC073B25AMAA
M2 - DRYC073B25CMAA
M3 - DRYC073B35AMAA
M4 - DRYC073B35CMAA
M5 - DRYC093B25AMAA
M6 - DRYC093B25CMAA
M7 - DRYC093B35AMAA
M8 - DRYC093B35CMAA
M9 - DRYC094B25CMAA
M10 - DRYC094B35AMAA
M11 - DRYC094B35CMAA
M12 - DRYC123B25AMAA
M13 - DRYC123B25CMAA
M14 - DRYC123B35AMAA
M15 - DRYC123B35CMAA
M16 - DRYC124B25AMAA
M17 - DRYC124B25CMAA
M18 - DRYC124B35AMAA
M19 - DRYC124B35CMAA

Front Assy/Chassis/Cap Weld/Compressor

Image 1

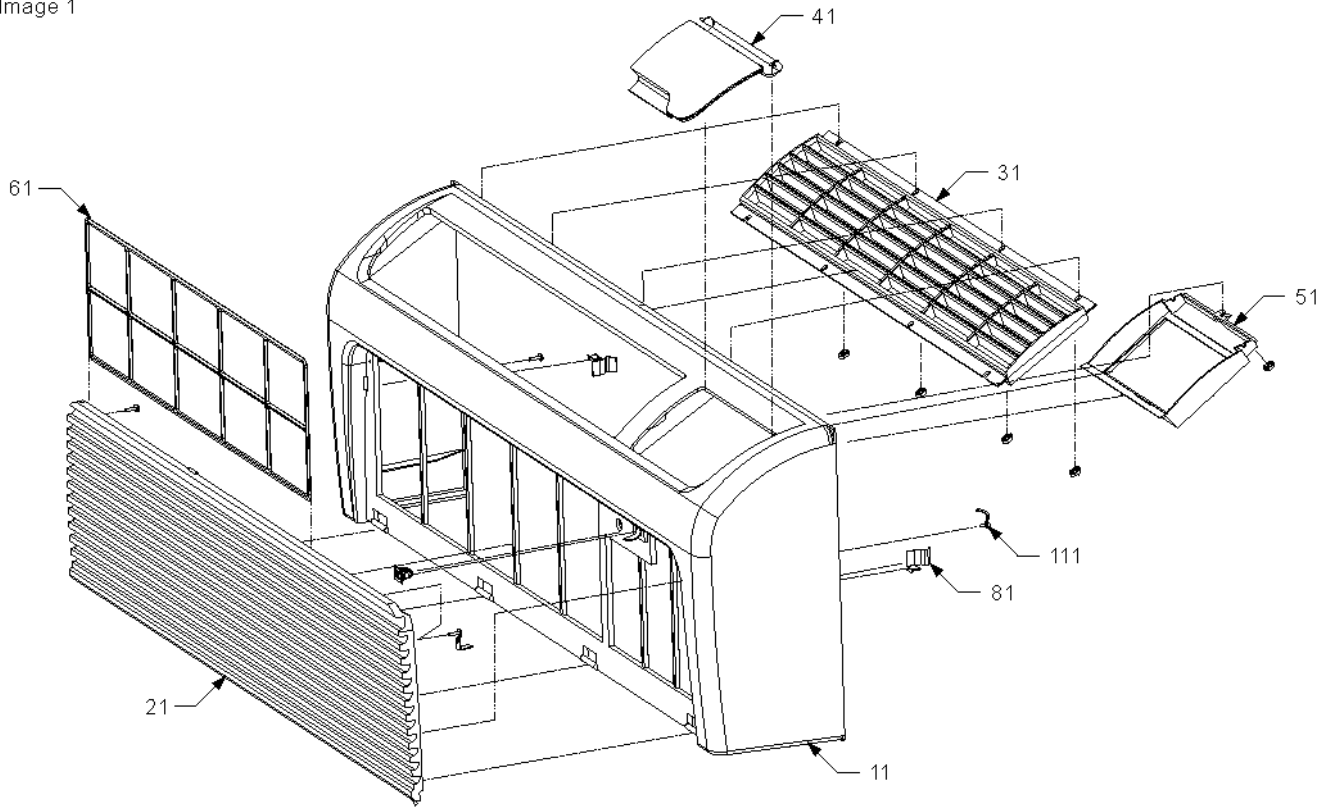
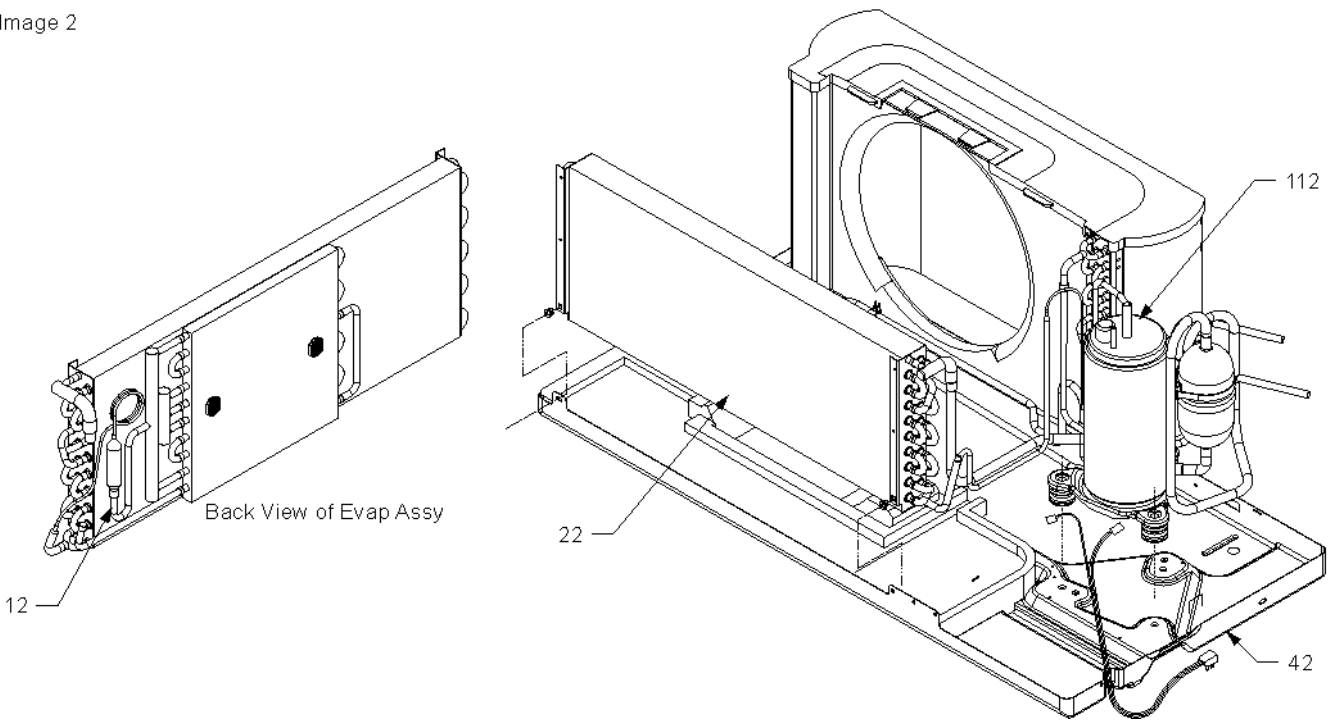


Image 2



Front Assy/Chassis/Cap Weld/Compressor

Ref Part No:	Description:	Ref. Part No:	Description:
<i>Image 1:</i>		Expanded Model Nomenclature	
11	0261P00000A FRONT FRAME	M1	- DRYC073B25AMAA
21	20415402 INTAKE GRILLE	M2	- DRYC073B25CMAA
31	20415301 EXHAUST GRILLE	M3	- DRYC073B35AMAA
41	20415901 DOOR ASSY	M4	- DRYC073B35CMAA
51	20415601 CONTROL HOUSING	M5	- DRYC093B25AMAA
61	20415801 FILTER	M6	- DRYC093B25CMAA
91	11045102 CLIP-SIDE (QTY 2)	M7	- DRYC093B35AMAA
111	0161P00002P STRAP-INLET GRILLE RESTRAINT (QTY 2)	M8	- DRYC093B35CMAA
<i>Image 2:</i>		M9	- DRYC094B25CMAA
12	0210P00012 CAPILLARY WELD (M12, M13, M14, M15, M16, M17, M18, M19)	M10	- DRYC094B35AMAA
12	0210P00014 CAPILLARY WELD (M5, M6, M7, M8, M9, M10, M11)	M11	- DRYC094B35CMAA
12	0210P00024 CAPILLARY WELD (M1, M2, M3, M4)	M12	- DRYC123B25AMAA
22	0202P00014S ASSY, EVAP DRY 12K (M12, M13, M14, M15, M16, M17, M18, M19)	M13	- DRYC123B25CMAA
22	0202P00019S ASSY, EVAP DRY 7K (M1, M2, M3, M4)	M14	- DRYC123B35AMAA
22	0202P00015S ASSY, EVAP DRY 9K (M5, M6, M7, M8, M9, M10, M11)	M15	- DRYC123B35CMAA
42	20403506 BASEPAN	M16	- DRYC124B25AMAA
112	2P19S3R276A-1AS COMPRESSOR 12K, 265/277V, 60HZ, R22 (M16, M17, M18, M19)	M17	- DRYC124B25CMAA
112	2P19S3R236A-1AS COMPRESSOR 13K, 208/230V, 60HZ, R22 (M12, M13, M14, M15)	M18	- DRYC124B35AMAA
112	2R11S3R236A-6AS COMPRESSOR 7K, 208/230V, 60HZ, R22 (M1, M2, M3, M4)	M19	- DRYC124B35CMAA
112	2P14S3R236A-1AS COMPRESSOR 9K, 208/230V, 60HZ, R22 (M5, M6, M7, M8)		
112	2P14S3R276A-1AS COMPRESSOR 9K, 265/277V, 60HZ, R22 (M9, M10, M11)		
NS	A3448602 GROMMET (M9, M10, M11, M12, M13, M14, M15, M16, M17, M18, M19)		
NS	A4622801 GROMMET (M1, M2, M3, M4, M5, M6, M7, M8)		
NS	0130P00031 OVERLOAD (M16, M17, M18, M19)		
NS	D6961603 OVERLOAD (M12, M13, M14, M15)		
NS	D6961641 OVERLOAD (M5, M6, M7, M8)		
NS	D6961642 OVERLOAD (M1, M2, M3, M4, M9, M10, M11)		
NS	M0253610 SHOULDER SCREW (M9, M10, M11, M12, M13, M14, M15, M16, M17, M18, M19)		
NS	M0253661 SHOULDER SCREW (M1, M2, M3, M4, M5, M6, M7, M8)		

Chassis/Control Panel

Image 1

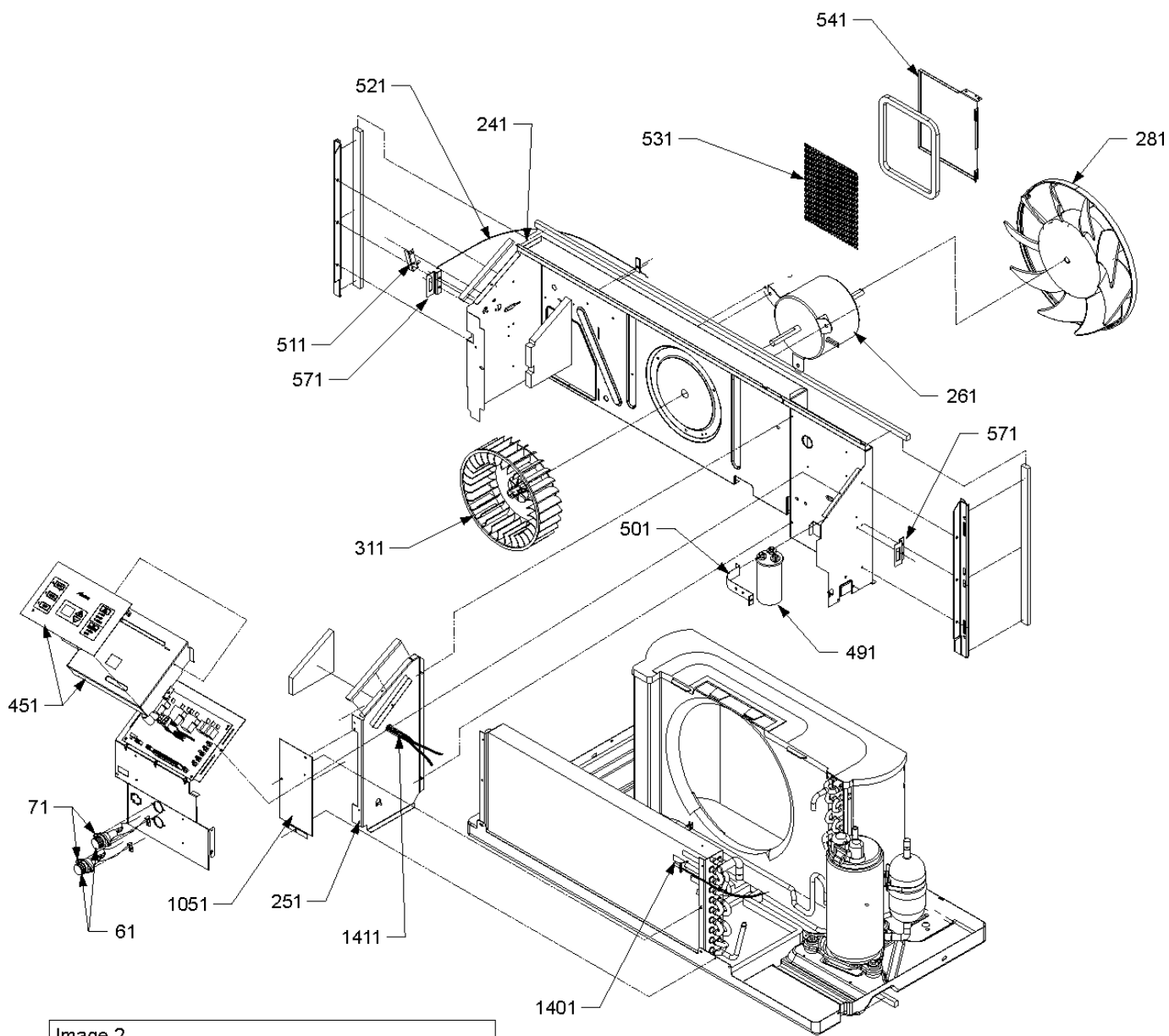
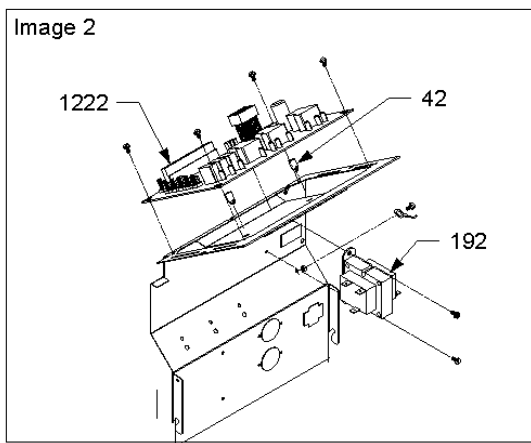


Image 2



Chassis/Control Panel

Ref Part

No: Description:

Image 1:

61	C6476001	FUSE HOLDER-BAYONET (M9, M16, M17)
61	C6476002	FUSE HOLDER-BAYONET (M10, M11, M18, M19)
71	A3410402	FUSE-15A (M9, M16, M17)
71	A3410403	FUSE-20A (M10, M11, M18, M19)
241	20403106PDG	PARTITION PANEL
251	20403301	PANEL-MID PARTITION
261	0131P00002S	MOTOR 100 W, 2 SP, 6 PL (M12, M13, M14, M15)
261	0131P00003S	MOTOR 100 W, 2 SP, 6 PL (M16, M17, M18, M19)
261	0131P00000S	MOTOR 40 W, 2 SP, 8 PL (M1, M2, M3, M4, M5, M6, M7, M8)
261	0131P00001S	MOTOR 40 W, 2 SP, 8 PL (M9, M10, M11)
281	20414601	CONDENSER FAN
311	11044101	BLOWER WHEEL
451	RSKP0005	CONTROL PANEL COVER AND MEMBRANE
491	CAP050150370RS	CAPACITOR 5/15/370V (M1, M2, M3, M4)
491	CAP050250370RS	CAPACITOR 5/25/370V (M9, M10, M11)
491	CAP050300370RS	CAPACITOR 5/30/370V (M5, M6, M7, M8, M12, M13, M14, M15)
491	CAP050300440RS	CAPACITOR 5/30/440V (M16, M17, M18, M19)
501	C6300502	CAPACITOR STRAP
511	11046302	LEVER ARM
521	11115401	CABLE
531	20304003	PROTECTION SHIELD
541	11046105PDG	VENT DOOR
571	11191703	BRACKET-PARTITION PANEL (QTY 2)
1051	20410801	ACCESS COVER
1401	0130P00032	THERMISTOR-INDOOR AMBIENT (M16, M17, M18, M19)
1401	20295706	THERMISTOR-INDOOR AMBIENT (M1, M2, M3, M4, M5, M6, M7, M8, M9, M10, M11, M12, M13, M14, M15)
1411	20295707	THERMISTOR-INDOOR COIL

Image 2:

42	M0590702	SUPPORT (QTY 2)
192	20512501	TRANSFORMER
1222	RSKP0004	CONTROL BOARD-M61 WIRELESS

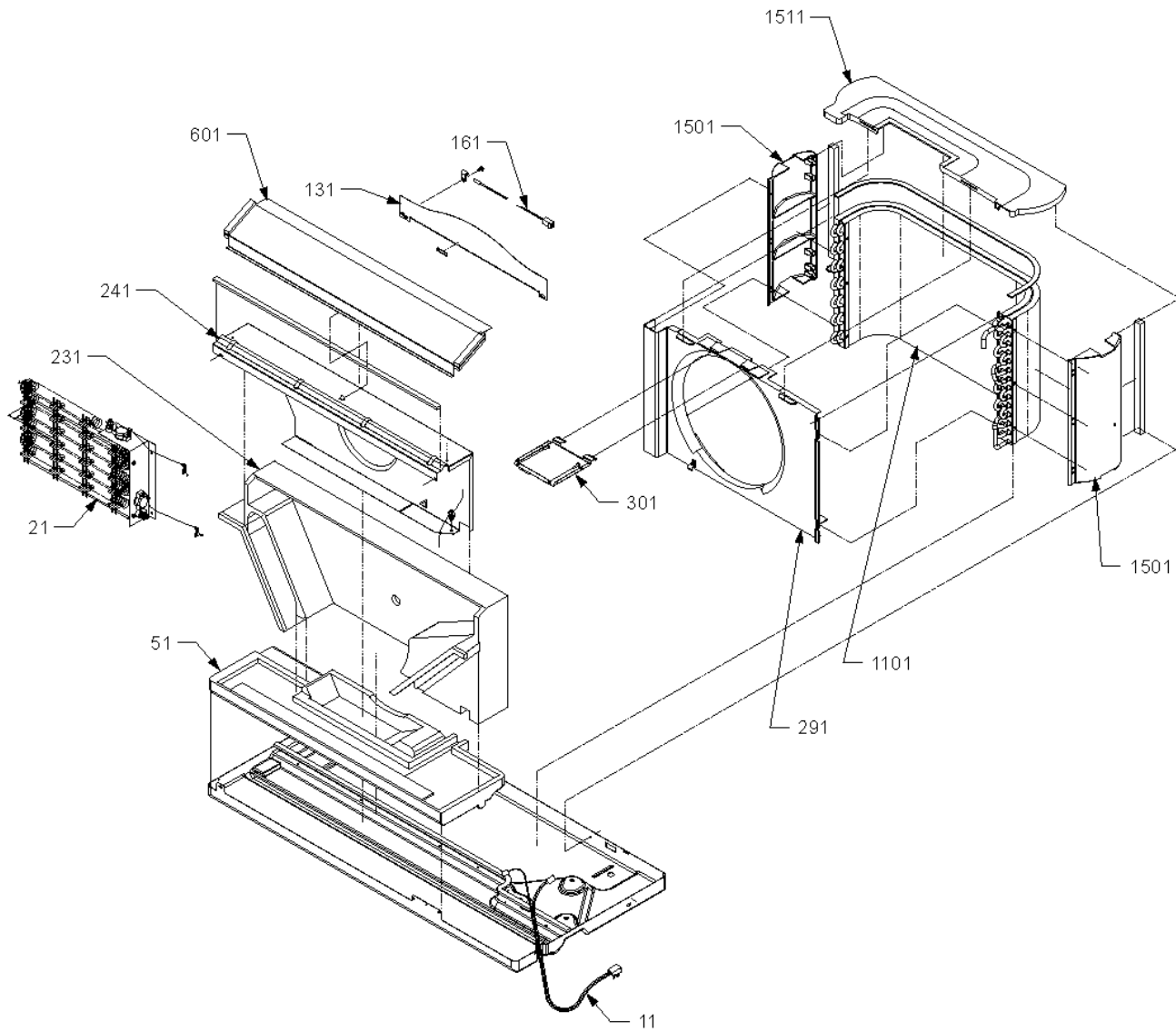
Ref. Part

No: No: Description:

Expanded Model Nomenclature

M1 - DRYC073B25AMAA
M2 - DRYC073B25CMAA
M3 - DRYC073B35AMAA
M4 - DRYC073B35CMAA
M5 - DRYC093B25AMAA
M6 - DRYC093B25CMAA
M7 - DRYC093B35AMAA
M8 - DRYC093B35CMAA
M9 - DRYC094B25CMAA
M10 - DRYC094B35AMAA
M11 - DRYC094B35CMAA
M12 - DRYC123B25AMAA
M13 - DRYC123B25CMAA
M14 - DRYC123B35AMAA
M15 - DRYC123B35CMAA
M16 - DRYC124B25AMAA
M17 - DRYC124B25CMAA
M18 - DRYC124B35AMAA
M19 - DRYC124B35CMAA

Chassis/Heater



Chassis/Heater

Ref Part No:	Description:	Ref. Part No:	Description:
<i>Image 1:</i>			
11 0130P00006	CORD 250 VAC, 15A (LCDI) (M1, M2, M5, M6, M12)		
11 0130P00007	CORD 250 VAC, 20A (LCDI) (M3, M4, M7, M8, M13, M14, M15)		
11 11114701	CORD 277 VAC, 20A (M9, M10, M11, M16, M17, M18, M19)		
21 22312902	HEATER 3 2.5 KW ASSY (M1, M2, M5, M6, M12)		
21 22312903	HEATER 3 3.5 KW ASSY (M3, M4, M7, M8, M13, M14, M15)		
21 22312906	HEATER 4 2.5 KW ASSY (M9, M16, M17)		
21 22312907	HEATER 4 3.7 KW ASSY (M10, M11, M18, M19)		
51 B20403802	EVAPORATOR PAD		
131 20515301	EXTERNAL BLOWER INTAKE		
161 20295708	THERMISTOR-DISCHARGE		
231 B20356703	BLOWER SCROLL		
241 20364804	BLOWER INTAKE		
291 20401301	CONDENSER SHROUD		
301 11044201PDG	TIE BRACE		
601 11123911	DISCHARGE SCREEN		
1101 0201P00004DGS	ASSY, COND (M2, M4, M6, M8, M9, M11)		
1101 0201P00006DGS	ASSY, COND (M13, M15, M17, M19)		
1101 0201P00004S	ASSY, COND BENT (M1, M2, M3, M4, M5, M6, M7, M8, M9, M10, M11)		
1101 0201P00006DGS	ASSY, COND BENT (M12, M13, M14, M15, M16, M17, M18, M19)		
1501 20357001	SIDE COVER-CONDENSER (QTY 2)		
1511 20396701	TOP COVER-CONDENSER		

Expanded Model Nomenclature

- M1 - DRYC073B25AMAA
- M2 - DRYC073B25CMAA
- M3 - DRYC073B35AMAA
- M4 - DRYC073B35CMAA
- M5 - DRYC093B25AMAA
- M6 - DRYC093B25CMAA
- M7 - DRYC093B35AMAA
- M8 - DRYC093B35CMAA
- M9 - DRYC094B25CMAA
- M10 - DRYC094B35AMAA
- M11 - DRYC094B35CMAA
- M12 - DRYC123B25AMAA
- M13 - DRYC123B25CMAA
- M14 - DRYC123B35AMAA
- M15 - DRYC123B35CMAA
- M16 - DRYC124B25AMAA
- M17 - DRYC124B25CMAA
- M18 - DRYC124B35AMAA
- M19 - DRYC124B35CMAA