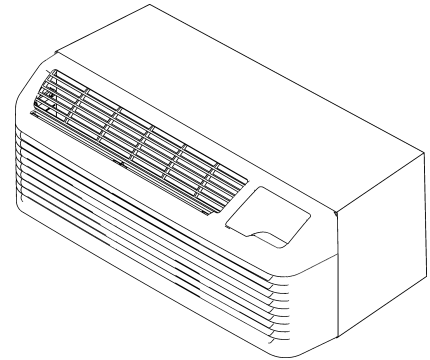


DCP/DHP Package Terminal Air Conditioner/Heat Pump

DCP073A35AA
DCP093A35AA
DCP123A35AA
DCP153A35AA
DHP073A35AA
DHP074A35AA
DHP093A35AA
DHP094A35AA
DHP123A35AA
DHP124A35AA
DHP153A35AA
DHP153A50AA
DHP154A35AA
DHP154A50AA



Amana® is a registered trademark of Maytag Corporation or its related companies and is used under license. All rights reserved.

This manual is to be used by qualified technicians only.

This manual replaces RP-A5356

© 2020 Goodman Company, L.P. ♦ 5151 San Felipe St, Suite 500 ♦ Houston, TX 77056

Important Information

Index

Functional Parts List	3
Illustration and Parts	4 - 7

Views shown are for parts illustrations only, not servicing procedures

Text Codes:

AR - As Required

NA - Not Available

NS - Not Shown

00000000 - See Note

QTY - Quantity Example (QTY 3) (If Quantity not shown, Quantity = 1)

M - Model Example (M1) (If M Code not shown, then part is used on all Models)

Expanded Model Nomenclature:

Example M1 - Model#1 M2 - Model#2 M3 - Model#3

Goodman Company, L.P. is not responsible for personal injury or property damage resulting from improper service. Review all service information before beginning repairs.

Warranty service must be performed by an authorized technician, using authorized factory parts. If service is required after the warranty expires, Goodman Company, L.P. also recommends contacting an authorized technician and using authorized factory parts.

Goodman Company, L.P. reserves the right to discontinue, or change at any time, specifications or designs without notice or without incurring obligations.

For assistance within the U.S.A. contact:

Homeowner Support
Goodman Company, L.P.
19001 Kermier Road
Waller, Texas 77484
877-254-4729-Telephone
713-863-2382-Facsimile

For assistance outside the U.S.A. contact:

International Division
Goodman Company, L.P.
19001 Kermier Road
Waller, Texas 77484
713-861-2500-Telephone
713-863-2382-Facsimile

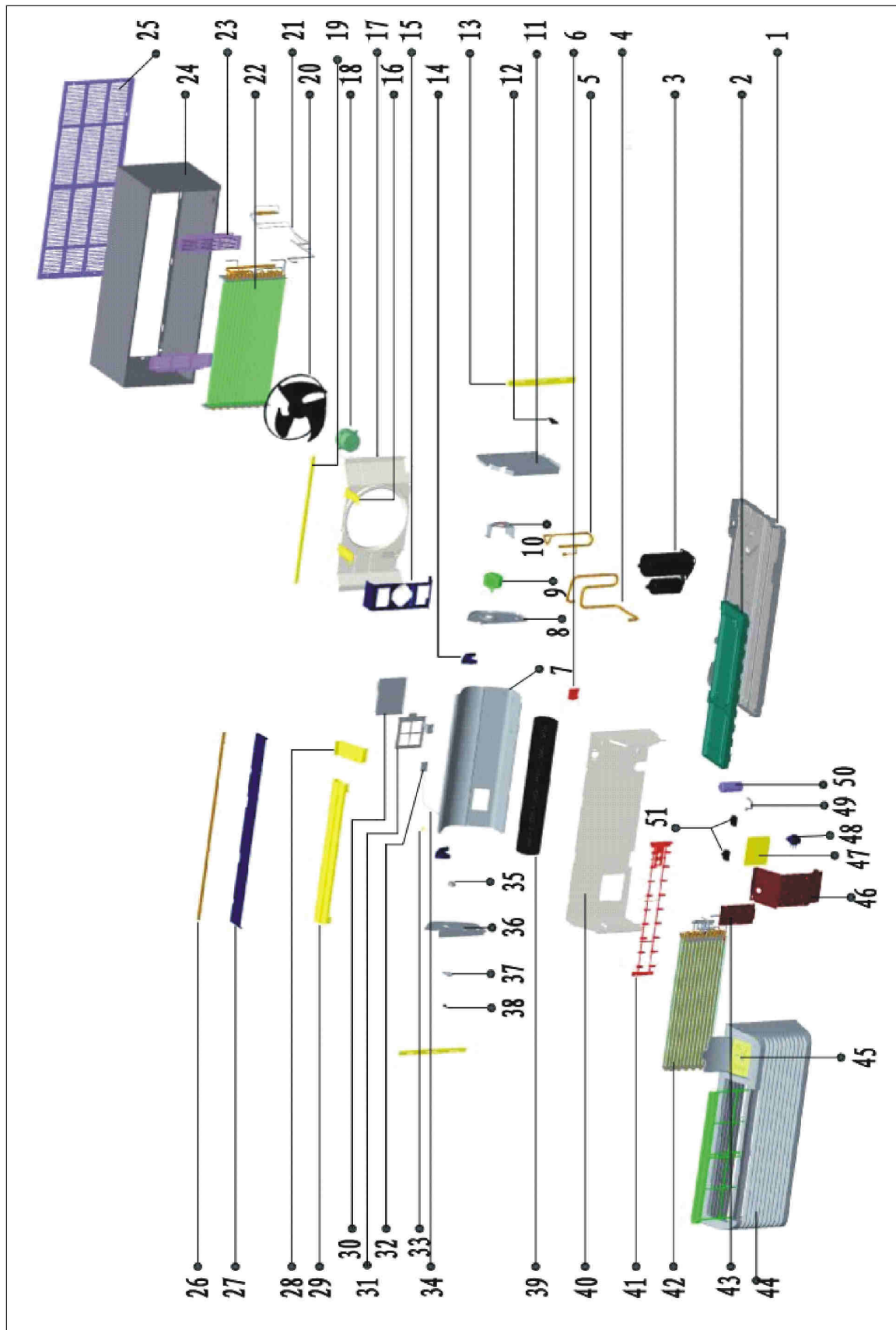
Functional Parts

Part

No: Description:

Part No:	Description:	Part No:	Description:
802420890085	20Amp non-LCDI power cord(with plug) (M6, M8, M10)	801620390259	Reversing Valve Assembly (M6)
8024205A0001	25 Amp non-LCDI power cord(with plug) (M13, M14)	801620890491	Reversing Valve Assy (M8, M10)
802300400129	Air return temp. sensor	801620890495	Reversing Valve Assy (M9)
801520590172	Check Valve (M7, M8)	801621190284	Reversing Valve Assy (M13, M14)
801600300055	Check Valve (M5, M13)	801621190376	Reversing Valve Assy (M11, M12)
801600300054	Check Valve (M6, M11)	802401600614	Reversing valve coil(AC208-240V 60Hz) (M9, M11, M12)
801401400144	Compressor (M4)	802401600844	Reversing valve coil(AC208-240V 60Hz) (M5, M7)
801401100059	Compressor (M2)	802300200040	voltage transformer-Transformer (M14)
801401600004	Compressor (M13, M14)	802300200089	voltage transformer-Transformer (M12)
801401600005	Compressor (M10)	Expanded Model Nomenclature	
801401600006	Compressor (M8)	M1 - DCP073A35AA M2 - DCP093A35AA M3 - DCP123A35AA M4 - DCP153A35AA M5 - DHP073A35AA M6 - DHP074A35AA M7 - DHP093A35AA M8 - DHP094A35AA M9 - DHP123A35AA M10 - DHP124A35AA M11 - DHP153A35AA M12 - DHP153A50AA M13 - DHP154A35AA M14 - DHP154A50AA	
801401600007	Compressor (M6)		
801401400136	Compressor (M3, M9)		
801401400148	Compressor (M7)		
801401400186	Compressor (M1, M5)		
801401600034	Compressor (M11, M12)		
802401000034	Compressor capacitor (M4)		
802401000039	Compressor capacitor (M8, M13, M14)		
802401000040	Compressor capacitor (M10, M11, M12)		
802401000059	Compressor capacitor (M1, M2, M5, M7)		
802420490009	Compressor capacitor (M3, M9)		
802401000057	Compressor capacitor (M6)		
803300400018	Control board (M1, M2, M3, M4, M5, M6, M7, M8, M9, M10, M11, M13)		
802400400495	Indoor Motor (M8)		
802400400493	Indoor Motor (M10, M13, M14)		
802400300054	Indoor Motor (M3, M4, M9, M11, M12)		
802400400706	Indoor Motor (M6)		
802400300024	Indoor Motor (M1, M2, M5, M7)		
802401100050	Indoor motor capacitor (M6, M8)		
802419900166	Indoor motor capacitor (M1, M2, M3, M4, M5, M7, M9, M11, M12)		
802401100049	Indoor motor capacitor (M10, M13, M14)		
802300400088	Indoor temp. sensor		
802420690015	LCDI power cord(240V/20A) (M1, M2, M3, M5, M7, M9)		
802420690014	LCDI power cord(240V/30A) (M4, M11, M12)		
802400400771	Outdoor Motor (M2, M3, M4, M9, M11, M12)		
802400400651	Outdoor Motor (M1, M5, M7)		
802400400706	Outdoor Motor (M6, M8)		
802400400687	Outdoor Motor (M10, M13, M14)		
802401100066	Outdoor motor capacitor (M1, M2, M3, M4, M5, M7, M9, M11, M12)		
802401100086	Outdoor motor capacitor (M6, M8, M10, M13, M14)		
802300400077	Outdoor temp. sensor		
803300301100	PCB (M1, M2, M3, M4, M5, M7, M9, M11, M12)		
802301700451	PCB (M6, M8, M10, M13, M14)		
802420390020	Power cord (Hardwire Kit) (M14)		
802420590013	Reversing valve coil(AC265-277V 60Hz) (M8, M10, M13, M14)		
801600100027	Reversing Valve (M9, M10, M11, M12, M13, M14)		
801600100023	Reversing Valve (M5, M6, M7, M8)		
801620390303	Reversing Valve Assembly (M5, M7)		

DCP MODELS



DCP MODELS

Ref. Part No:	Description:	Ref. Part No:	Description:
Image 1:		Image 1:	
1	801220390279 Base Pan (M1, M2, M3, M4)	37	801120890012 Fresh air inlet rail (M1, M2, M3, M4)
2	802220890006 Foam tray (M1, M2, M3, M4)	38	801120890011 Fresh air inlet lever (M1, M2, M3, M4)
3	801401100059 Compressor (M2)	39	802920890005 Blower wheel (M1, M2, M3, M4)
3	801401400136 Compressor (M3)	40	801220890506 Partition Panel (M1, M2, M3, M4)
3	801401400144 Compressor (M4)	41	802402000104 Electric heater (M4)
3	801401400186 Compressor (M1)	41	802402000111 Electric heater (M1, M3)
4	801620390307 Inlet Line (M1)	41	802402000250 Electric heater (M2)
4	801620590793 Inlet Line (M2)	42	801520390057 Evaporator assembly (M1, M2)
4	801620890503 Inlet Line (M3)	42	801520890043 Evaporator assembly (M3)
4	801621190068 Inlet Line (M4)	42	801521190048 Evaporator assembly (M4)
5	801620590487 Discharge Tube (M1)	43	801220890175 Seal board 1 (M1, M2, M3, M4)
5	801620590792 Discharge Tube (M2)	44	801120790001 Panel assembly (M1, M2, M3, M4)
5	801620890501 Discharge Tube (M3)	45	803320590193 Control board assembly (M3, M4)
5	801621190258 Discharge Tube (M4)	45	NA Control board assembly (M1, M2)
6	801120890051 Line press plate (M1, M2, M3, M4)	46	801220590684 Electrical Box Cover (M1, M2, M3, M4)
7	801220590678 Blower Scroll (M1, M2, M3, M4)	47	803300301100 PCB (M1, M2, M3, M4)
8	801220590681 Right End Plate (M1, M2, M3, M4)	48	802300200089 Transformer (M1, M2, M3, M4)
9	802400300024 Indoor Motor (M1, M2)	49	801200100002 Capacitor clamp (M1, M2, M3, M4)
9	802400300054 Indoor Motor (M3, M4)	50	802401000034 Compressor capacitor (M4)
10	801220890158 Indoor motor support (M1, M2, M3, M4)	50	802401000059 Compressor capacitor (M1, M2)
11	801220890395 E-box left side board assembly (M1, M2, M3, M4)	50	802420490009 Compressor capacitor (M3)
12	801120890050 Wire buckle (M1, M2, M3)	51	802419900166 Indoor motor capacitor (M1, M2, M3, M4)
12	801121190013 Wire buckle (M4)	51	802401100066 Outdoor motor capacitor (M1, M2, M3, M4)
13	801220590405 Left fixing clamp components (M1, M2, M3, M4)	NS	801120890024 Air outlet grille (M1, M2, M3, M4)
13	801220590406 Right fixing clamp components (M1, M2, M3, M4)	NS	802920590006 Air outlet protection grid (M1, M2, M3, M4)
14	801120890013 Left parts of air duct (M1, M2, M3, M4)	NS	802300400129 Air return temp. sensor (M1, M2, M3, M4)
14	801120890014 Right parts of air duct (M1, M2, M3, M4)	NS	801220690019 Back grille (M1, M2, M3, M4)
15	801220890144 Outdoor motor support (M1, M2, M3, M4)	NS	801120690007 Back grille installation clamp (M1, M2, M3, M4)
16	801220890166 Tie Brace (M1, M2, M3, M4)	NS	802420390053 Compressor connecting wire (M1, M2, M3, M4)
17	801120890019 Shroud (M1, M2, M3, M4)	NS	803300400018 Control board (M1, M2, M3, M4)
18	802400400651 Outdoor Motor (M1)	NS	802020790004 Control panel mask (M1, M2, M3, M4)
18	802400400771 Outdoor Motor (M2, M3, M4)	NS	801120890026 Electrical box (M1, M2, M3, M4)
19	801220890190 Top Shroud (M1, M2, M3, M4)	NS	801120890022 Filter net (M1, M2, M3, M4)
20	801120890009 Outdoor Fan Blade (M1, M2, M3, M4)	NS	801120890023 Filter net rail (M1, M2, M3, M4)
21	801620890505 Capillary assembly (M3)	NS	801220890192 Fixing panel clamp (M1, M2, M3, M4)
21	801620390310 Capillary Weldment (M1)	NS	801120890021 Front panel (M1, M2, M3, M4)
21	801620590771 Capillary Weldment (M2)	NS	802300400088 Indoor temp. sensor (M1, M2, M3, M4)
21	801621190397 Capillary Weldment (M4)	NS	802420690015 LCD1 power cord(240V/20A) (M1, M2, M3)
22	801520590092 Condenser assembly (M3)	NS	802420690014 LCD1 power cord(240V/30A) (M4)
22	801520590172 Condenser assembly (M1, M2)	NS	802300400077 Outdoor temp. sensor (M1, M2, M3, M4)
22	801521190098 Condenser assembly (M4)	NS	P0000306367 Panel cover (M1, M2, M3, M4)
23	801220890146 Grille (M1, M2, M3, M4)	NS	800500100004 Refridgerant (M1, M2, M3, M4)
24	801220890441 Wall sleeve (M1, M2, M3, M4)		
25	801220690038 Back grille assembly (M1, M2, M3, M4)		
26	801220890165 Panel board support (M1, M2, M3, M4)		
27	801220890179 Top cover (M1, M2, M3, M4)		
28	801220590692 Seal board 2 (M1, M2, M3, M4)		
29	801220590690 Air outlet assembly (M1, M2, M3, M4)		
30	801220890225 Fresh Air Vent Door (M1, M2, M3, M4)		
31	801120890010 Fresh Air Filter (M1, M2, M3, M4)		
32	801220890151 Fresh air inlet support (M1, M2, M3, M4)		
33	801120890017 Fresh air inlet wire buckle (M1, M2, M3, M4)		
34	802920890004 Fresh air inlet spring (M1, M2, M3, M4)		
34	801120890028 Fresh air inlet tube (M1, M2, M3, M4)		
35	801220890156 Bearing (M1, M2, M3, M4)		
35	802720890002 Bearing (M1, M2, M3, M4)		
36	801220590679 Left End Plate (M1, M2, M3, M4)		

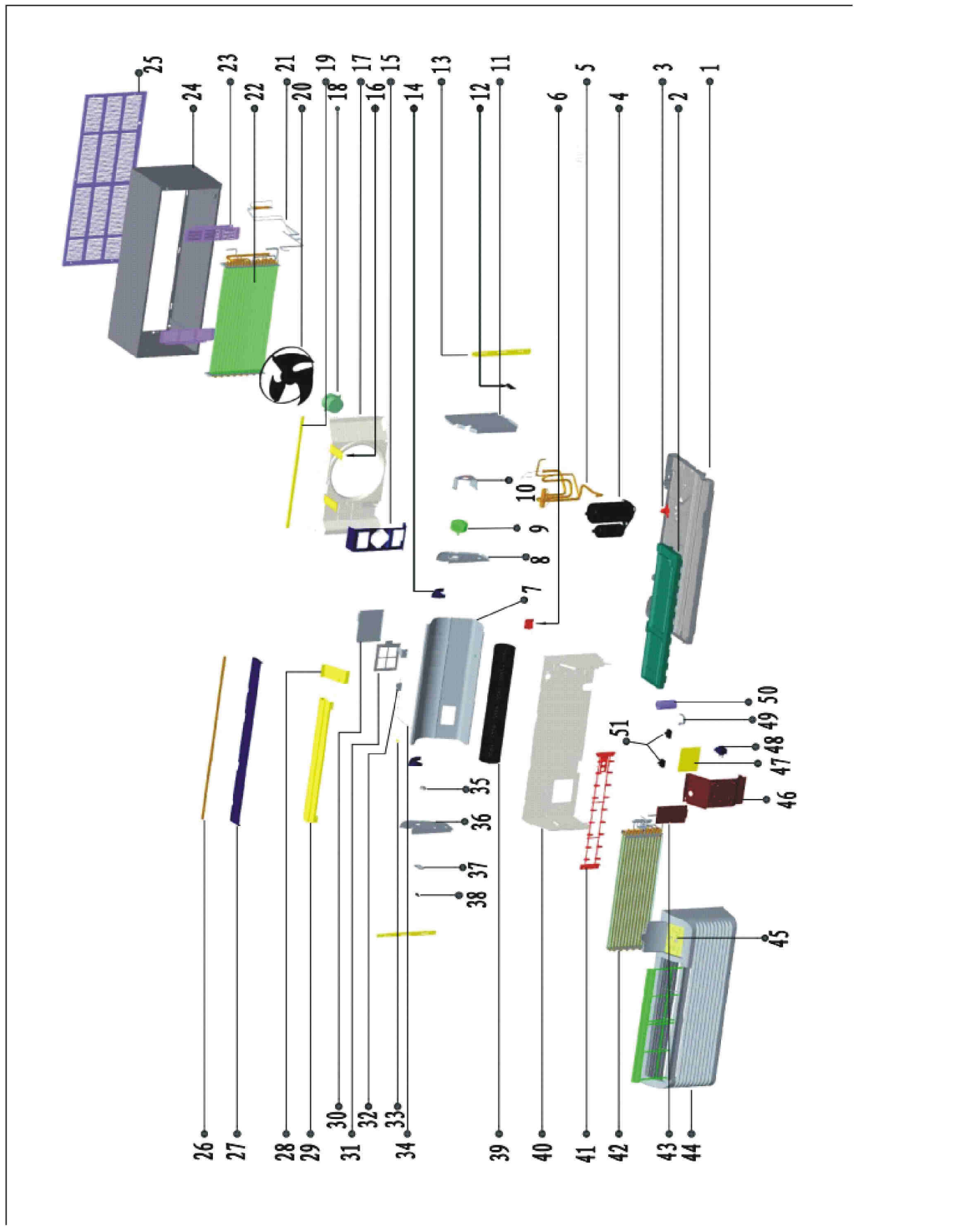
DCP MODELS

Ref. Part No:	No:	Description:	Ref. Part No:	No:	Description:
---------------	-----	--------------	---------------	-----	--------------

Expanded Model Nomenclature

- M1 - DCP073A35AA
- M2 - DCP093A35AA
- M3 - DCP123A35AA
- M4 - DCP153A35AA
- M5 - DHP073A35AA
- M6 - DHP074A35AA
- M7 - DHP093A35AA
- M8 - DHP094A35AA
- M9 - DHP123A35AA
- M10 - DHP124A35AA
- M11 - DHP153A35AA
- M12 - DHP153A50AA
- M13 - DHP154A35AA
- M14 - DHP154A50AA

DHP MODELS



DHP MODELS

Ref. Part No:	Ref. Part No:	Description:	Description:	
Image 1:		Image 1:		
1	801220390278	Base Pan (M5, M6, M7, M8, M9, M10, M11, M12)	14 801120890014	Right parts of air duct (M5, M6, M7, M8, M9, M10, M11, M12, M13, M14)
1	801221190269	Base Pan (M13, M14)	15 801220890144	Outdoor motor support (M5, M6, M7, M8, M9, M10, M11, M12, M13, M14)
2	802220890006	Base Tray -Plastic Drain (M12, M14)	16 801220890166	Tie Brace (M5, M6, M7, M8, M9, M10, M11, M12, M13, M14)
2	801600900095	Drain valve of P TAC (M5, M6, M7, M8, M9, M10, M11, M13)	17 801120890019	Shroud (M5, M6, M7, M8, M9, M10, M11, M12, M13, M14)
3	802220890006	Foam tray (M5, M6, M7, M8, M9, M10, M11, M13)	18 802400400651	Outdoor Motor (M5, M7)
3	801600900095	PTAC Drain Valve-Base Pan Drain Valve (M12, M14)	18 802400400687	Outdoor Motor (M10, M13, M14)
4	801401400136	Compressor (M9)	18 802400400706	Outdoor Motor (M6, M8)
4	801401400148	Compressor (M7)	18 802400400771	Outdoor Motor (M9, M11, M12)
4	801401400186	Compressor (M5)	19 801220890190	Top Shroud (M5, M6, M7, M8, M9, M10, M11, M12, M13, M14)
4	801401600004	Compressor (M14)	20 801120890009	Outdoor Fan Blade (M5, M6, M7, M8, M9, M10, M11, M12, M13, M14)
4	801401600004	Compressor (M13)	21 801621190079	Capillary Weldment (M13)
4	801401600005	Compressor (M10)	21 801621190385	Capillary Weldment (M11, M12)
4	801401600006	Compressor (M8)	21 801620890493	Capillary assembly (M10)
4	801401600007	Compressor (M6)	21 801620890499	Capillary assembly (M9)
4	801401600034	Compressor (M11, M12)	21 801620590768	Capillary Weldment (M7)
5	801620390259	Reversing Valve Assembly (M6)	21 801620590799	Capillary Weldment (M8)
5	801620390303	Reversing Valve Assembly (M5, M7)	21 801620390260	Capillary Weldment Assy (M6)
5	801620890491	Reversing Valve Assy (M8, M10)	21 801620390306	Capillary Weldment Assy (M5)
5	801620890495	Reversing Valve Assy (M9)	21 801621190394	One-way Valve assembly-Capillary Weldment (M14)
5	801621190284	Reversing Valve Assy (M13, M14)	22 801520390061	Condenser assembly (M6)
5	801621190376	Reversing Valve Assy (M11, M12)	22 801520590092	Condenser assembly (M9)
6	801120890051	Line press plate (M5, M6, M7, M8, M9, M10, M11, M12, M13, M14)	22 801520590172	Condenser assembly (M5, M7, M8)
7	801220590678	Blower Scroll (M5, M6, M7, M8, M9, M10, M11, M12, M13, M14)	22 801521190098	Condenser assembly (M10, M11, M12, M13, M14)
8	801220590681	Right End Plate (M5, M6, M7, M8, M9, M10, M11, M12, M13, M14)	23 801220890146	Grille (M5, M6, M7, M8, M9, M10, M11, M12, M13, M14)
9	802400300024	Indoor Motor (M5, M7)	24 801220890441	Wall sleeve (M5, M6, M7, M8, M9, M10, M11, M12, M13, M14)
9	802400300054	Indoor Motor (M9, M11, M12)	25 801220690038	Back grille assembly (M5, M6, M7, M8, M9, M10, M11, M12, M13, M14)
9	802400400493	Indoor Motor (M10, M13, M14)	26 801220890165	Panel board support (M5, M6, M7, M8, M9, M10, M11, M12, M13, M14)
9	802400400495	Indoor Motor (M8)	27 801220890179	Top cover (M5, M6, M7, M8, M9, M10, M11, M12, M13, M14)
9	802400400706	Indoor Motor (M6)	28 801220590692	Seal board 2 (M5, M6, M7, M8, M9, M10, M11, M12, M13, M14)
10	801220890158	Indoor motor support (M5, M6, M7, M8, M9, M10, M11, M12, M13, M14)	29 801220590690	Air outlet assembly (M5, M6, M7, M8, M9, M10, M11, M12, M13, M14)
11	801220890395	E-box left side board assembly (M5, M6, M7, M8, M9, M10, M11, M12, M13, M14)	30 801220890225	Fresh Air Vent Door (M5, M6, M7, M8, M9, M10, M11, M12, M13, M14)
12	801120890036	Wire buckle (M6, M8, M10)	31 801120890010	Fresh Air Filter (M5, M6, M7, M8, M9, M10, M11, M12, M13, M14)
12	801120890050	Wire buckle (M5, M7, M9, M13)	32 801220890151	Fresh air inlet support (M5, M6, M7, M8, M9, M10, M11, M12, M13, M14)
12	801121190013	Wire buckle (M11, M12, M14)	33 801120890017	Fresh air inlet wire buckle (M5, M6, M7, M8, M9, M10, M11, M12, M13, M14)
13	801220590405	Left fixing clamp components (M5, M6, M8, M9, M10, M11, M13)	34 801120890028	Fresh air inlet tube (M5, M6, M7, M8, M9, M10, M11, M12, M13, M14)
13	801220890167	Left fixing clamp components (M7, M12, M14)		
13	801220590406	Right fixing clamp components (M10)		
13	801220590406	Right fixing clamp components (M11)		
13	801220590406	Right fixing clamp components (M13)		
13	801220590406	Right fixing clamp components (M9)		
13	801220590406	Right fixing clamp components (M8)		
13	801220590406	Right fixing clamp components (M5, M6, M8, M9, M10, M11, M13)		
13	801220590406	Right fixing clamp components (M6)		
13	801220890170	Right fixing clamp components (M7, M12, M14)		
14	801120890013	Left parts of air duct (M5, M6, M7, M8, M9, M10, M11, M12, M13, M14)		

DHP MODELS

Ref. Part No:	Ref. Part No:	Description:	Description:
Image 1:		Image 1:	
34	802920890004	Fresh air inlet spring (M5, M6, M7, M8, M9, M10, M11, M12, M13, M14)	NS 801120890024 air outlet grid (M5, M6, M7, M8, M9, M10, M11, M12, M13, M14)
35	801220890156	Bearing (M5, M6, M7, M8, M9, M10, M11, M12, M13, M14)	NS 802920590006 Air outlet protection grid (M5, M6, M7, M8, M9, M10, M11, M12, M13, M14)
35	802720890002	Bearing (M5, M6, M7, M8, M9, M10, M11, M12, M13, M14)	NS 802300400129 Air return temp. sensor (M5, M6, M7, M8, M9, M10, M11, M12, M13, M14)
36	801220590679	Left End Plate (M5, M6, M7, M8, M9, M10, M11, M12, M13, M14)	NS 801220690019 Back grille (M5, M6, M7, M8, M9, M10, M11, M12, M13, M14)
37	801120890012	Fresh air inlet rail (M5, M6, M7, M8, M9, M10, M11, M12, M13, M14)	NS 801120690007 Back grille installation clamp (M5, M6, M7, M8, M9, M10, M11, M12, M13, M14)
38	801120890011	Fresh air inlet lever (M5, M6, M7, M8, M9, M10, M11, M12, M13, M14)	NS 801600300054 Check Valve (M6, M11, M12, M14)
39	802920890005	Blower Wheel (M5, M6, M7, M8, M9, M10, M11, M12, M13, M14)	NS 801600300055 Check Valve (M5, M13)
40	801220890506	Foam component (M5, M6, M7, M8, M9, M10, M11, M12, M13)	NS 802420390053 Compressor connecting wire (M5, M6, M7, M8, M9, M10, M11, M12, M13, M14)
40	801220890507	Foam component (M14)	NS 803300400018 Control board (M5, M6, M7, M8, M9, M10, M11, M12, M13, M14)
41	802402000107	Electric heater (M13)	NS 801120890026 control panel box (M5, M6, M7, M8, M9, M10, M11, M12, M13, M14)
41	802402000111	Electric heater (M5, M7, M9)	NS P0000306367 Control Panel cover (M5, M6, M7, M8, M9, M10, M11, M13)
41	802402000113	Electric heater (M6, M8, M10)	NS 802020590467 Control panel mask (M12, M14)
41	802402000251	Electric heater (M11, M12)	NS 802020790004 Control panel mask (M5, M6, M7, M8, M9, M10, M11, M13)
41	802402000254	Electric heater (M14)	NS 801120890022 filter (M5, M6, M7, M8, M9, M10, M11, M12, M13, M14)
42	801520390057	Evaporator assembly (M5, M7)	NS 801120890023 Filter net rail (M5, M6, M7, M8, M9, M10, M11, M12, M13, M14)
42	801520890043	Evaporator assembly (M6, M8, M9, M10)	NS 801220890192 Fixing panel clamp (M5, M6, M7, M8, M9, M10, M11, M12, M13, M14)
42	801521190048	Evaporator assembly (M11, M12, M13, M14)	NS 801600100027 Four-Way Valve-Reversing Valve (M9, M10, M11, M12, M13, M14)
43	801220890175	Seal board 1 (M5, M6, M7, M8, M9, M10, M11, M12, M13, M14)	NS 801120890021 Front cover (M5, M6, M7, M8, M9, M10, M11, M12, M13, M14)
44	801120790001	Panel components (M5, M6, M7, M8, M9, M10, M11, M13)	NS 802300400088 Indoor temp. sensor (M5, M6, M7, M8, M9, M10, M11, M12, M13, M14)
44	801120890020	Panel components (M12, M14)	NS 802420690015 LCDI power cord(240V/20A) (M5, M7, M9)
45	NA	Control board assembly (M5, M6, M7, M8, M9, M10, M13)	NS 802420690014 LCDI power cord(240V/30A) (M11, M12)
45	803320590193	Control board assy (M11, M12, M14)	NS 802300400077 Outdoor temp. sensor (M5, M6, M7, M8, M9, M10, M11, M12, M13, M14)
46	801220590684	Electrical Box Cover (M5, M6, M7, M8, M9, M10, M11, M12, M13, M14)	NS 802420390020 Power cord (Hardwire Kit) (M14)
47	802301700451	control board (M6, M8, M10, M13, M14)	NS 8024205A0001 Power cord (with 277V/25A plug) (M13, M14)
47	803300301100	control board (M5, M7, M9, M11, M12)	NS 800500100004 Refrigerant (M5, M6, M7, M8, M9, M10, M11, M12, M13, M14)
48	802300200040	Transformer (M6, M8, M10, M13, M14)	NS 802401600844 Reversing valve coil(AC208-240V 60Hz) (M5, M7)
48	802300200089	Transformer (M5, M7, M9, M11, M12)	NS 802420590013 Reversing valve coil(AC265-277V 60Hz) (M6, M8, M10, M13, M14)
49	801200100002	Capacitor clamp (M5, M6, M7, M8, M9, M10, M11, M12, M13, M14)	NS 801600100023 Reversing Valve (M5, M6, M7, M8)
50	802401000039	Compressor capacitor (M8, M13, M14)	NS 802401600614 Reversing valve coil(AC208-240V 60Hz) (M9, M11, M12)
50	802401000040	Compressor capacitor (M10, M11, M12)	NS 801120890025 touchpad cover (M12, M14)
50	802401000057	Compressor capacitor (M6)	
50	802401000059	Compressor capacitor (M5, M7)	
50	802420490009	Compressor capacitor (M9)	
51	802401100049	Indoor motor capacitor (M10, M13, M14)	
51	802401100050	Indoor motor capacitor (M6, M8)	
51	802419900166	Indoor motor capacitor (M5, M7, M9, M11, M12)	
51	802401100066	Outdoor motor capacitor (M5, M7, M9, M11, M12)	
51	802401100086	Outdoor motor capacitor (M6, M8, M10, M13, M14)	
NS	802420890085	20Amp non-LCDI power cord(with plug) (M6, M8, M10)	

DHP MODELS

Ref. Part

No: No:

Description:

Ref. Part

No: No:

Description:

Expanded Model Nomenclature

M1 - DCP073A35AA

M2 - DCP093A35AA

M3 - DCP123A35AA

M4 - DCP153A35AA

M5 - DHP073A35AA

M6 - DHP074A35AA

M7 - DHP093A35AA

M8 - DHP094A35AA

M9 - DHP123A35AA

M10 - DHP124A35AA

M11 - DHP153A35AA

M12 - DHP153A50AA

M13 - DHP154A35AA

M14 - DHP154A50AA