



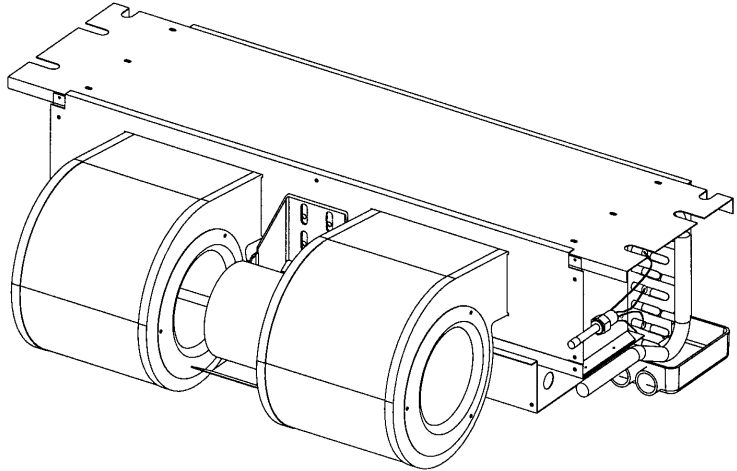
REPAIR PARTS

Models covered
in this manual

- AC18-00C
- AC18-00C A
- AC18-05C
- AC18-05C A
- AC18-05C B
- AC18-06C
- AC18-06C A
- AC18-06C B
- AC18-08C
- AC18-08C A
- AC18-08C B
- AC24-00C
- AC24-00C A
- AC24-05C
- AC24-05C A
- AC24-05C B
- AC24-06C
- AC24-06C A
- AC24-06C B
- AC24-08C
- AC24-08C A
- AC24-08C B
- AC24-10C
- AC24-10C A
- AC24-10C B
- AC30-00C
- AC30-00C A
- AC30-05C
- AC30-05C A
- AC30-05C B
- AC30-08C
- AC30-08C A
- AC30-08C B
- AC30-10C
- AC30-10C A
- AC30-10C B
- AC36-00C
- AC36-00C A
- AC36-05C
- AC36-05C A
- AC36-05C B
- AC36-08C
- AC36-08C A
- AC36-08C B
- AC36-10C
- AC36-10C A
- AC36-10C B

AC* Series Ceiling Mount Air Handlers

The last letter of the model number
represents the revision level;
example: AC18-00C A is AC18-00C rev. A.



This manual is to be used by qualified technicians only.

Made in the USA by:
Goodman Manufacturing Company, L.P.
2550 North Loop West, Suite 400
Houston Texas 77092

RP - 217F
July 2003

This manual replaces RP-217E.
Copyright © 2003 Goodman Manufacturing Company, L.P.

Important Information

Goodman is not responsible for personal injury or property damage resulting from improper service. Review all service information before beginning repairs.

Warranty service must be performed by an authorized technician, using authorized factory parts. If service is required after the warranty expires, Goodman also recommends contacting an authorized technician and using authorized factory parts.

For assistance within the U.S.A. contact:
Consumer Affairs Department
Goodman Manufacturing Company, L.P.
7401 Security Way
Houston, Texas 77040
877-254-4729-Telephone
713-863-2382-Facsimile

For assistance outside the U.S.A. contact:
International Division
Goodman Manufacturing Company, L.P.
7401 Security Way
Houston, Texas 77040
713-861-2500-Telephone
713-863-2382-Facsimile

Index

Functional Parts List 4 - 5
Illustration and Parts 6 - 13

Views shown are for parts illustrations only, not servicing procedures.

Revision F: Updates

Text Codes:

- AR - As Required
- NA - Not Available
- NS - Not Shown
- 00000000 - See Note
- QTY - Quantity Example (QTY 3) (If Quantity not shown, Quantity = 1)
- M - Model Example (M1) (If M Code not shown, then part is used on all Models)

Expanded Model Nomenclature:

Example
M1 - Model#1
M2 - Model#2
M3 - Model#3

Functional Parts

Part

No: Description:

BT13680-11	BLOWER WHEEL, 5.75 X 6.75 (M1, M2, M3, M4, M5, M6, M7, M8, M9, M10, M11)
BT13680-12	BLOWER WHEEL, 6.31 X 8.25 (M12, M13, M14, M15, M16, M17, M18, M19, M20, M21, M22, M23, M24, M25)
BT13680-13	BLOWER WHEEL, 6.75 X 8.25 (M26, M27, M28, M29, M30, M31, M32, M33, M34, M35, M36)
BT13680-14	BLOWER WHEEL, 6.75 X 9.25 (M37, M38, M39, M40, M41, M42, M43, M44, M45, M46, M47)
B1370735	BOARD, TIME DELAY (M2, M5, M8, M11, M13, M16, M19, M22, M25, M27, M30, M33, M36, M38, M41, M44, M47)
BT94580-00	CAPACITOR, 5/370
36960-00S	COIL TUBING ASM. AC18 (M1, M2, M3, M4, M5, M6, M7, M8, M9, M10, M11)
36960-01S	COIL TUBING ASM. AC24 (M12, M13, M14, M15, M16, M17, M18, M19, M20, M21, M22, M23, M24, M25)
36960-02S	COIL TUBING ASM. AC30 (M26, M27, M28, M29, M30, M31, M32, M33, M34, M35, M36)
36960-03S	COIL TUBING ASM. AC36 (M37, M38, M39, M40, M41, M42, M43, M44, M45, M46, M47)
BT1753509	DISCONNECT 60 AMP W/O CLIP
BT13690-04	FLOWRATOR, .052 (M1, M2, M3, M4, M5, M6, M7, M8, M9, M10, M11)
BT13690-01	FLOWRATOR, .059 (M12, M13, M14, M15, M16, M17, M18, M19, M20, M21, M22, M23, M24, M25)
BT13690-05	FLOWRATOR, .065 (M26, M27, M28, M29, M30, M31, M32, M33, M34, M35, M36)
BT13690-06	FLOWRATOR, .071 (M37, M38, M39, M40, M41, M42, M43, M44, M45, M46, M47)
BT14200-12	HEATER, 10KW (M24, M25, M35, M36, M46, M47)
BT14200-10	HEATER, 5KW (M4, M5, M15, M16, M29, M30, M40, M41)
BT14200-13	HEATER, 6KW (M7, M8, M18, M19)
BT14200-11	HEATER, 8KW (M1, M10, M11, M22, M23, M33, M34, M43, M44)
3600008	KIT, HTR (INCL. HTR & CTRL BTM) (M42)
3600007	KIT, HTR (INCL. HTR & CTRL BTM) (M39)
3600006	KIT, HTR (INCL. HTR & CTRL BTM) (M34)
3600009	KIT, HTR (INCL. HTR & CTRL BTM) (M45)
3600005	KIT, HTR (INCL. HTR & CTRL BTM) (M31)
3600004	KIT, HTR (INCL. HTR & CTRL BTM) (M28)
3600003	KIT, HTR (INCL. HTR & CTRL BTM) (M23)
3600002	KIT, HTR (INCL. HTR & CTRL BTM) (M9, M20)
3600001	KIT, HTR (INCL. HTR & CTRL BTM) (M6, M17)
3600000	KIT, HTR (INCL. HTR & CTRL BTM) (M3, M14)
BT13400-16	MOTOR, 1/3 HP (M37, M38, M39, M40, M41, M42, M43, M44, M45, M46, M47)
BT13400-15	MOTOR, 1/4 HP (M12, M13, M14, M15, M16, M17, M18, M19, M20, M21, M22, M23, M24, M25, M26, M27, M28, M29, M30, M31, M32, M33, M34, M35, M36)
BT13400-14	MOTOR, 1/8 HP (M1, M2, M3, M4, M5, M6, M7, M8, M9, M10, M11)
BT1370700	RELAY, TIME DELAY (M1, M3, M4, M6, M7, M9, M10, M12, M14, M15, M17, M18, M20, M21, M23, M24, M26, M28, M29, M31, M32, M34, M35, M37, M39, M40, M42, M43, M45, M46)
BT12565-00	SEQUENCER, 5KW (M3, M4, M5, M14, M15, M16, M28, M29, M30, M39, M40, M41)
BT12565-01	SEQUENCER, 8-10KW (M6, M7, M8, M9, M10, M11, M17, M18, M19, M20, M21, M22, M23, M24, M25, M31, M32, M33, M34, M35, M36, M42, M43, M44, M45, M46, M47)
BT12437-22	THERMOSTAT (M3, M6, M9, M14, M17, M20, M23, M28, M31, M34, M39, M42, M45)
BT11416-01	TRANSFORMER, 230 TO 24V

The last letter of the model number represents the revision level; example: AC18-05C A is AC18-05C rev. A.

Functional Parts

Part

No: Description:

SPECIAL PARTS

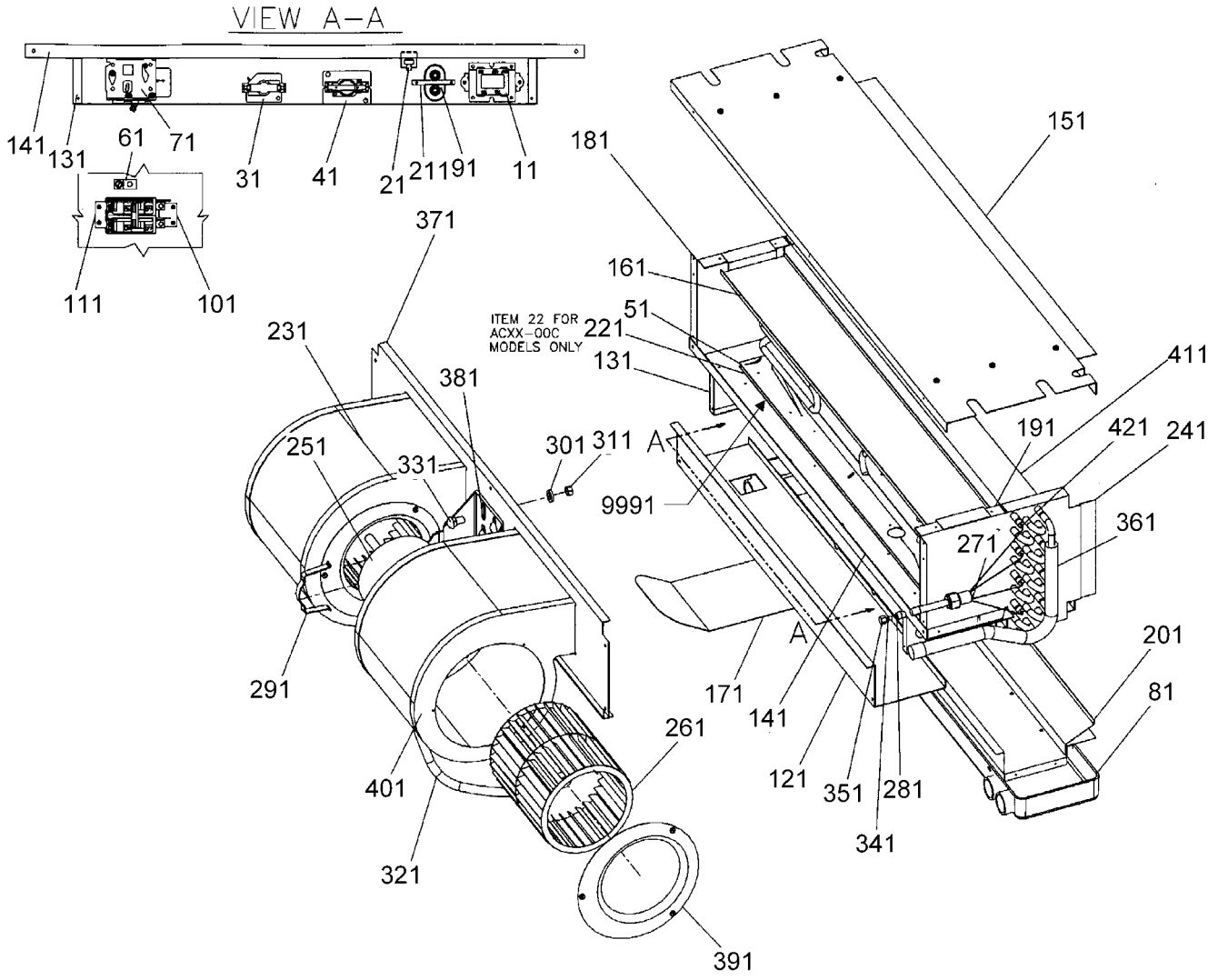
IO-162C I & O MANUAL
 RP-217F REPAIR PARTS MANUAL

Expanded Model Nomenclature

M1 - AC18-00C	M46 - AC36-10C A
M2 - AC18-00C A	M47 - AC36-10C B
M3 - AC18-05C	
M4 - AC18-05C A	
M5 - AC18-05C B	
M6 - AC18-06C	
M7 - AC18-06C A	
M8 - AC18-06C B	
M9 - AC18-08C	
M10 - AC18-08C A	
M11 - AC18-08C B	
M12 - AC24-00C	
M13 - AC24-00C A	
M14 - AC24-05C	
M15 - AC24-05C A	
M16 - AC24-05C B	
M17 - AC24-06C	
M18 - AC24-06C A	
M19 - AC24-06C B	
M20 - AC24-08C	
M21 - AC24-08C A	
M22 - AC24-08C B	
M23 - AC24-10C	
M24 - AC24-10C A	
M25 - AC24-10C B	
M26 - AC30-00C	
M27 - AC30-00C A	
M28 - AC30-05C	
M29 - AC30-05C A	
M30 - AC30-05C B	
M31 - AC30-08C	
M32 - AC30-08C A	
M33 - AC30-08C B	
M34 - AC30-10C	
M35 - AC30-10C A	
M36 - AC30-10C B	
M37 - AC36-00C	
M38 - AC36-00C A	
M39 - AC36-05C	
M40 - AC36-05C A	
M41 - AC36-05C B	
M42 - AC36-08C	
M43 - AC36-08C A	
M44 - AC36-08C B	
M45 - AC36-10C	

The last letter of the model number represents the revision level; example: AC18-05C A is AC18-05C rev. A.

AC* Model Air Handlers



AC* Model Air Handlers

Ref. Part

No: No: Description:

Ref. Part

No: No: Description:

Image 1:

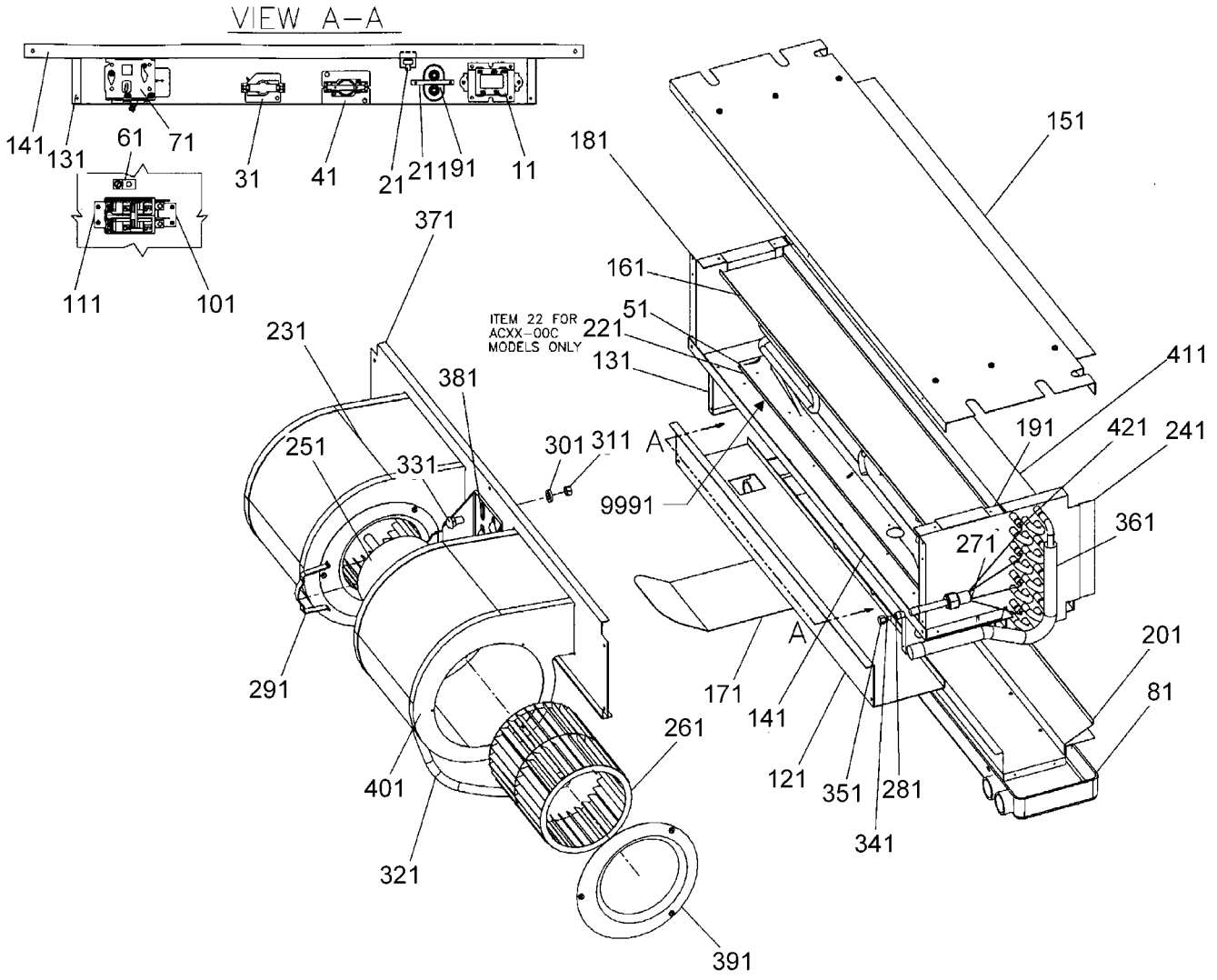
11	BT11416-01	TRANSFORMER, 230 TO 24V
21	BT12437-22	THERMOSTAT (M3, M6, M9, M14, M17, M20, M23, M28, M31, M34, M39, M42, M45)
31	BT12565-00	SEQUENCER, 5KW (M3, M4, M5, M14, M15, M16, M28, M29, M30, M39, M40, M41)
31	BT12565-01	SEQUENCER, 8-10KW (M6, M7, M8, M9, M10, M11, M17, M18, M19, M20, M21, M22, M23, M24, M25, M31, M32, M33, M34, M35, M36, M42, M43, M44, M45, M46, M47)
41	B1370735	BOARD, TIME DELAY (M2, M5, M8, M11, M13, M16, M19, M22, M25, M27, M30, M33, M36, M38, M41, M44, M47)
41	BT1370700	RELAY, TIME DELAY (M1, M3, M4, M6, M7, M9, M10, M12, M14, M15, M17, M18, M20, M21, M23, M24, M26, M28, M29, M31, M32, M34, M35, M37, M39, M40, M42, M43, M45, M46)
51	3600000	KIT, HTR (INCL. HTR & CTRL BTM) (M3, M14)
51	3600001	KIT, HTR (INCL. HTR & CTRL BTM) (M6, M17)
51	3600002	KIT, HTR (INCL. HTR & CTRL BTM) (M9, M20)
51	3600003	KIT, HTR (INCL. HTR & CTRL BTM) (M23)
51	3600004	KIT, HTR (INCL. HTR & CTRL BTM) (M28)
51	3600005	KIT, HTR (INCL. HTR & CTRL BTM) (M31)
51	3600006	KIT, HTR (INCL. HTR & CTRL BTM) (M34)
51	3600007	KIT, HTR (INCL. HTR & CTRL BTM) (M39)
51	3600008	KIT, HTR (INCL. HTR & CTRL BTM) (M42)
51	3600009	KIT, HTR (INCL. HTR & CTRL BTM) (M45)
61	BT13715-00	GROUND LUG
71	BT1753509	DISCONNECT 60 AMP W/O CLIP
81	36700-02	DRAIN PAN, SERVICE KIT (LG.) (M37, M38, M39, M40, M41, M42, M43, M44, M45, M46, M47)
81	36700-01	DRAIN PAN, SERVICE KIT (MED.) (M26, M27, M28, M29, M30, M31, M32, M33, M34, M35, M36)
81	36700-00	DRAIN PAN, SERVICE KIT (SM) (M1, M2, M3, M4, M5, M6, M7, M8, M9, M10, M11, M12, M13, M14, M15, M16, M17, M18, M19, M20, M21, M22, M23, M24, M25)

Expanded Model Nomenclature

M1 - AC18-00C	M46 - AC36-10C A
M2 - AC18-00C A	M47 - AC36-10C B
M3 - AC18-05C	
M4 - AC18-05C A	
M5 - AC18-05C B	
M6 - AC18-06C	
M7 - AC18-06C A	
M8 - AC18-06C B	
M9 - AC18-08C	
M10 - AC18-08C A	
M11 - AC18-08C B	
M12 - AC24-00C	
M13 - AC24-00C A	
M14 - AC24-05C	
M15 - AC24-05C A	
M16 - AC24-05C B	
M17 - AC24-06C	
M18 - AC24-06C A	
M19 - AC24-06C B	
M20 - AC24-08C	
M21 - AC24-08C A	
M22 - AC24-08C B	
M23 - AC24-10C	
M24 - AC24-10C A	
M25 - AC24-10C B	
M26 - AC30-00C	
M27 - AC30-00C A	
M28 - AC30-05C	
M29 - AC30-05C A	
M30 - AC30-05C B	
M31 - AC30-08C	
M32 - AC30-08C A	
M33 - AC30-08C B	
M34 - AC30-10C	
M35 - AC30-10C A	
M36 - AC30-10C B	
M37 - AC36-00C	
M38 - AC36-00C A	
M39 - AC36-05C	
M40 - AC36-05C A	
M41 - AC36-05C B	
M42 - AC36-08C	
M43 - AC36-08C A	
M44 - AC36-08C B	
M45 - AC36-10C	

The last letter of the model number represents the revision level; example: AC18-05C A is AC18-05C rev. A.

AC* Model Air Handlers

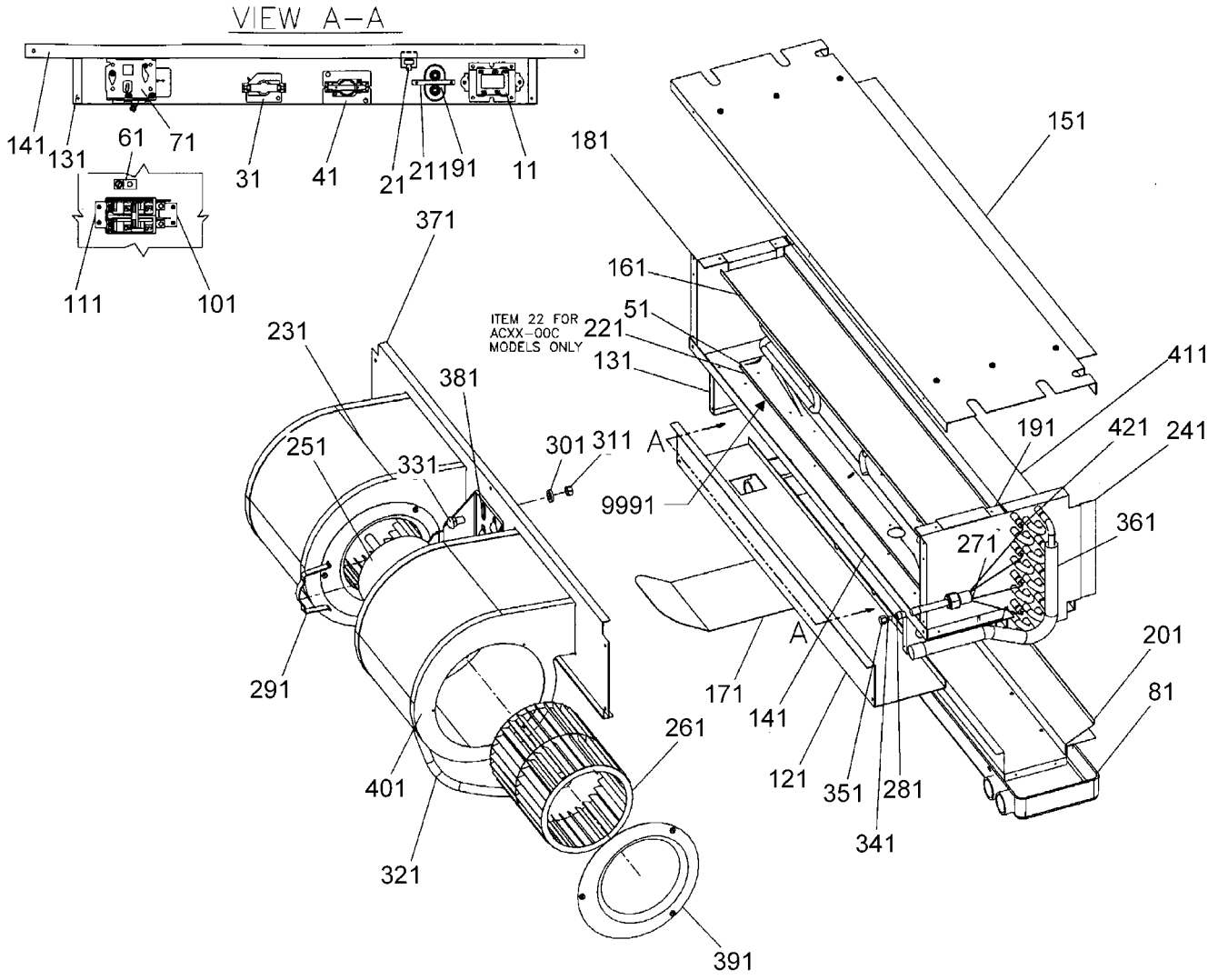


AC* Model Air Handlers

Ref. Part No:	Ref. Part No:	Description:	Description:
<i>Image 1:</i>		Expanded Model Nomenclature	
91	BT94580-00	CAPACITOR, 5/370	M1 - AC18-00C
101	17536-02	BREAKER, SUPPORT	M2 - AC18-00C A
111	17536-03	BREAKER, SUPPORT	M3 - AC18-05C
121	36100-00	CONTROL BOX TOP	M4 - AC18-05C A
131	36110-03	CONTROL BOX, WRAPPER (M1, M3, M4, M6, M7, M9, M10, M12, M14, M15, M17, M18, M20, M21, M23, M24, M26, M28, M29, M31, M32, M34, M35, M37, M39, M40, M42, M43, M45, M46)	M5 - AC18-05C B
131	36110-05	CONTROL BOX, WRAPPER (M2, M5, M8, M11, M13, M16, M19, M22, M25, M27, M30, M33, M36, M38, M41, M44, M47)	M6 - AC18-06C
141	36120-02	CONTROL BOX BOTTOM (LARGE) (M37, M38, M39, M40, M41, M42, M43, M44, M45, M46, M47)	M7 - AC18-06C A
141	36120-01	CONTROL BOX BOTTOM (MED.) (M26, M27, M28, M29, M30, M31, M32, M33, M34, M35, M36)	M8 - AC18-06C B
141	36120-00	CONTROL BOX BOTTOM (SMALL) (M1, M2, M3, M4, M5, M6, M7, M8, M9, M10, M11, M12, M13, M14, M15, M16, M17, M18, M19, M20, M21, M22, M23, M24, M25)	M9 - AC18-08C
151	36130-02	EVAP. TOP PANEL (LARGE) (M37, M38, M39, M40, M41, M42, M43, M44, M45, M46, M47)	M10 - AC18-08C A
151	36130-01	EVAP. TOP PANEL (MED) (M26, M27, M28, M29, M30, M31, M32, M33, M34, M35, M36)	M11 - AC18-08C B
151	36130-00	EVAP. TOP PANEL (SMALL) (M1, M2, M3, M4, M5, M6, M7, M8, M9, M10, M11, M12, M13, M14, M15, M16, M17, M18, M19, M20, M21, M22, M23, M24, M25)	M12 - AC24-00C
161	36150-02	EVAP. COIL BLOCK-OFF (LG) (M37, M38, M39, M40, M41, M42, M43, M44, M45, M46, M47)	M13 - AC24-00C A
161	36150-01	EVAP. COIL BLOCK-OFF (MED) (M26, M27, M28, M29, M30, M31, M32, M33, M34, M35, M36)	M14 - AC24-05C
161	36150-00	EVAP. COIL BLOCK-OFF (SMALL) (M1, M2, M3, M4, M5, M6, M7, M8, M9, M10, M11, M12, M13, M14, M15, M16, M17, M18, M19, M20, M21, M22, M23, M24, M25)	M15 - AC24-05C A
171	36170-00	MOTOR SHIELD	M16 - AC24-05C B
181	36220-00	ENDPLATE, BRACKET	M17 - AC24-06C
191	36220-01	ENDPLATE, BRACKET	M18 - AC24-06C A
201	36300-05	SPOTWELD ASM., EVAP. (LARGE) (M37, M38, M39, M40, M41, M42, M43, M44, M45, M46, M47)	M19 - AC24-06C B
201	36300-04	SPOTWELD ASM., EVAP. (MED.) (M26, M27, M28, M29, M30, M31, M32, M33, M34, M35, M36)	M20 - AC24-08C
201	36300-03	SPOTWELD ASM., EVAP. (SMALL) (M1, M2, M3, M4, M5, M6, M7, M8, M9, M10, M11, M12, M13, M14, M15, M16, M17, M18, M19, M20, M21, M22, M23, M24, M25)	M21 - AC24-08C A
211	36300-07	MOUNTING BRACKET, CAP.	M22 - AC24-08C B
221	36300-08	BLOCK-OFF, CONTROL BOX (M1, M2, M12, M13, M26, M27, M37, M38)	M23 - AC24-10C
			M24 - AC24-10C A
			M25 - AC24-10C B
			M26 - AC30-00C
			M27 - AC30-00C A
			M28 - AC30-05C
			M29 - AC30-05C A
			M30 - AC30-05C B
			M31 - AC30-08C
			M32 - AC30-08C A
			M33 - AC30-08C B
			M34 - AC30-10C
			M35 - AC30-10C A
			M36 - AC30-10C B
			M37 - AC36-00C
			M38 - AC36-00C A
			M39 - AC36-05C
			M40 - AC36-05C A
			M41 - AC36-05C B
			M42 - AC36-08C
			M43 - AC36-08C A
			M44 - AC36-08C B
			M45 - AC36-10C
			M46 - AC36-10C A
			M47 - AC36-10C B

The last letter of the model number represents the revision level; example: AC18-05C A is AC18-05C rev. A.

AC* Model Air Handlers

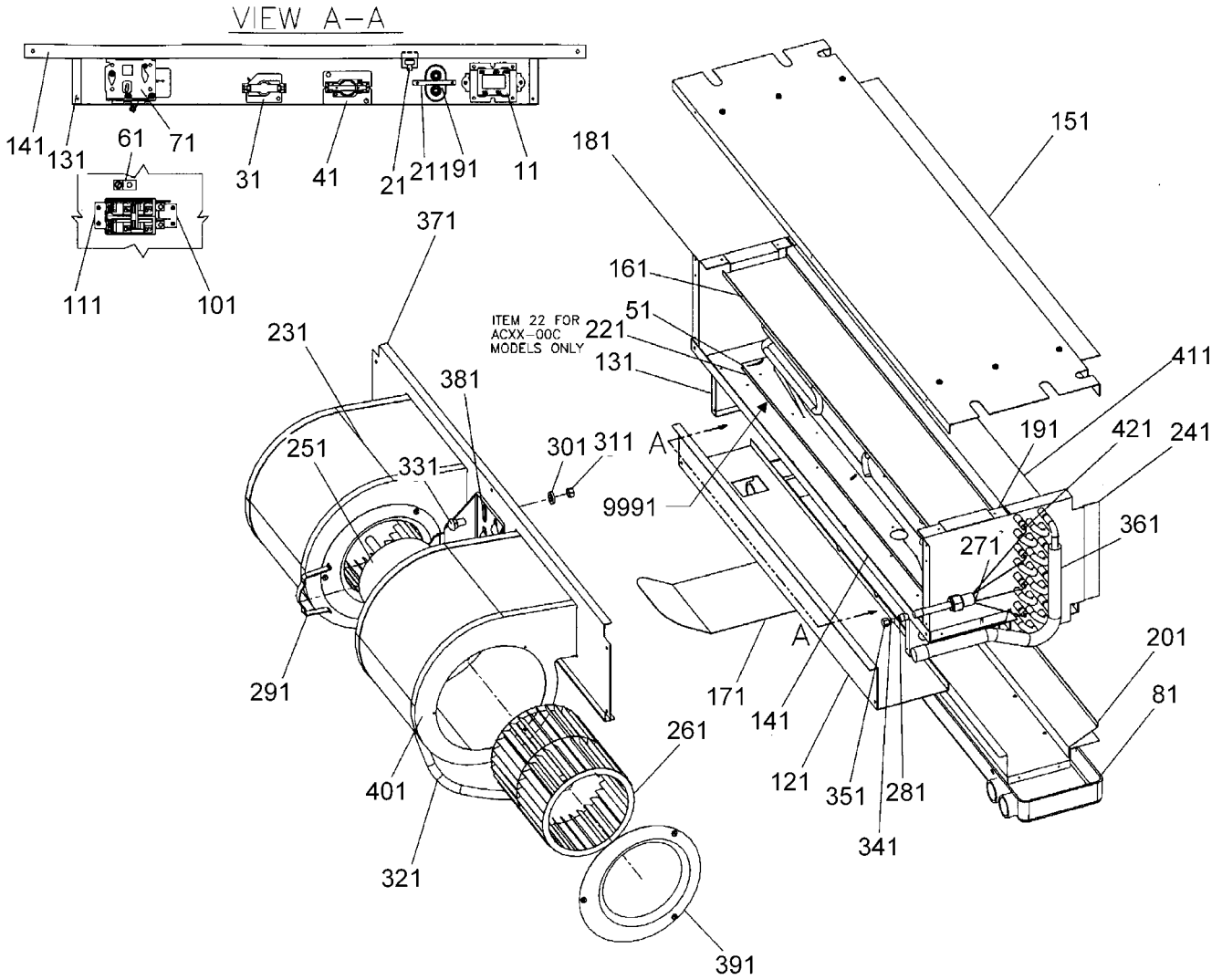


AC* Model Air Handlers

Ref. Part No:	Description:	Ref. Part No:	Description:
<i>Image 1:</i>		Expanded Model Nomenclature	
231 36501-00S	BLOWER ASM. AC18 (COMPLETE) (M1, M2, M3, M4, M5, M6, M7, M8, M9, M10, M11)	M1 - AC18-00C	M46 - AC36-10C A
231 36501-01S	BLOWER ASM. AC24 (COMPLETE) (M12, M13, M14, M15, M16, M17, M18, M19, M20, M21, M22, M23, M24, M25)	M2 - AC18-00C A	M47 - AC36-10C B
231 36501-02S	BLOWER ASM. AC30 (COMPLETE) (M26, M27, M28, M29, M30, M31, M32, M33, M34, M35, M36)	M3 - AC18-05C	
231 36501-03S	BLOWER ASM. AC36 (COMPLETE) (M37, M38, M39, M40, M41, M42, M43, M44, M45, M46, M47)	M4 - AC18-05C A	
241 36960-00S	COIL TUBING ASM. AC18 (M1, M2, M3, M4, M5, M6, M7, M8, M9, M10, M11)	M5 - AC18-05C B	
241 36960-01S	COIL TUBING ASM. AC24 (M12, M13, M14, M15, M16, M17, M18, M19, M20, M21, M22, M23, M24, M25)	M6 - AC18-06C	
241 36960-02S	COIL TUBING ASM. AC30 (M26, M27, M28, M29, M30, M31, M32, M33, M34, M35, M36)	M7 - AC18-06C A	
241 36960-03S	COIL TUBING ASM. AC36 (M37, M38, M39, M40, M41, M42, M43, M44, M45, M46, M47)	M8 - AC18-06C B	
251 RT13400-16	MOTOR, 1/3 HP (M37, M38, M39, M40, M41, M42, M43, M44, M45, M46, M47)	M9 - AC18-08C	
251 RT13400-15	MOTOR, 1/4 HP (M12, M13, M14, M15, M16, M17, M18, M19, M20, M21, M22, M23, M24, M25, M26, M27, M28, M29, M30, M31, M32, M33, M34, M35, M36)	M10 - AC18-08C A	
251 BT13400-14	MOTOR, 1/8 HP (M1, M2, M3, M4, M5, M6, M7, M8, M9, M10, M11)	M11 - AC18-08C B	
261 BT13680-11	BLOWER WHEEL, 5.75 X 6.75 (M1, M2, M3, M4, M5, M6, M7, M8, M9, M10, M11)	M12 - AC24-00C	
261 BT13680-12	BLOWER WHEEL, 6.31 X 8.25 (M12, M13, M14, M15, M16, M17, M18, M19, M20, M21, M22, M23, M24, M25)	M13 - AC24-00C A	
261 BT13680-13	BLOWER WHEEL, 6.75 X 8.25 (M26, M27, M28, M29, M30, M31, M32, M33, M34, M35, M36)	M14 - AC24-05C	
261 BT13680-14	BLOWER WHEEL, 6.75 X 9.25 (M37, M38, M39, M40, M41, M42, M43, M44, M45, M46, M47)	M15 - AC24-05C A	
271 BT13690-04	FLOWRATOR, .052 (M1, M2, M3, M4, M5, M6, M7, M8, M9, M10, M11)	M16 - AC24-05C B	
271 BT13690-01	FLOWRATOR, .059 (M12, M13, M14, M15, M16, M17, M18, M19, M20, M21, M22, M23, M24, M25)	M17 - AC24-06C	
271 BT13690-05	FLOWRATOR, .065 (M26, M27, M28, M29, M30, M31, M32, M33, M34, M35, M36)	M18 - AC24-06C A	
271 BT13690-06	FLOWRATOR, .071 (M37, M38, M39, M40, M41, M42, M43, M44, M45, M46, M47)	M19 - AC24-06C B	
281 BT13733-00	ACCESS FITTING	M20 - AC24-08C	
291 BT13925-00	CLAMP, MOTOR MOUNT (QTY 2)	M21 - AC24-08C A	
301 BT13929-04	FENDER WASHER (QTY 4)	M22 - AC24-08C B	
311 BT13930-07	NYLON LOCKNUT (QTY 4)	M23 - AC24-10C	
321 BT1393410	FLEX CONDUIT (QTY AR)	M24 - AC24-10C A	
331 BT13937-06	CARRIAGE BOLT (QTY 4)	M25 - AC24-10C B	
341 BT17870-00	CORE, VALVE	M26 - AC30-00C	
351 BT91020-00	CAP W/O-RING	M27 - AC30-00C A	
		M28 - AC30-05C	
		M29 - AC30-05C A	
		M30 - AC30-05C B	
		M31 - AC30-08C	
		M32 - AC30-08C A	
		M33 - AC30-08C B	
		M34 - AC30-10C	
		M35 - AC30-10C A	
		M36 - AC30-10C B	
		M37 - AC36-00C	
		M38 - AC36-00C A	
		M39 - AC36-05C	
		M40 - AC36-05C A	
		M41 - AC36-05C B	
		M42 - AC36-08C	
		M43 - AC36-08C A	
		M44 - AC36-08C B	
		M45 - AC36-10C	

The last letter of the model number represents the revision level; example: AC18-05C A is AC18-05C rev. A.

AC* Model Air Handlers



AC* Model Air Handlers

Ref. Part No:	Description:	Ref. Part No:	Description:
<i>Image 1:</i>		Expanded Model Nomenclature	
361 30937-29	MANIFOLD ASM.	M1 - AC18-00C	M46 - AC36-10C A M47 - AC36-10C B
371 36140-00	BLOWER DECK AC18 (M1, M2, M3, M4, M5, M6, M7, M8, M9, M10, M11)	M2 - AC18-00C A	
371 36140-01	BLOWER DECK AC24 (M12, M13, M14, M15, M16, M17, M18, M19, M20, M21, M22, M23, M24, M25)	M3 - AC18-05C	
371 36140-02	BLOWER DECK AC30 (M26, M27, M28, M29, M30, M31, M32, M33, M34, M35, M36)	M4 - AC18-05C A	
371 36140-03	BLOWER DECK AC36 (M37, M38, M39, M40, M41, M42, M43, M44, M45, M46, M47)	M5 - AC18-05C B	
381 36160-00	MOTOR MOUNT BRACKET	M6 - AC18-06C	
391 36420-00	VENTURI, 5.000 DIA. (M1, M2, M3, M4, M5, M6, M7, M8, M9, M10, M11)	M7 - AC18-06C A	
391 36420-01	VENTURI, 5.500 DIA (M12, M13, M14, M15, M16, M17, M18, M19, M20, M21, M22, M23, M24, M25, M26, M27, M28, M29, M30, M31, M32, M33, M34, M35, M36, M37, M38, M39, M40, M41, M42, M43, M44, M45, M46, M47)	M8 - AC18-06C B	
401 36602-01	BLOWER HOUSING, 10.75 (M12, M13, M14, M15, M16, M17, M18, M19, M20, M21, M22, M23, M24, M25, M26, M27, M28, M29, M30, M31, M32, M33, M34, M35, M36, M37, M38, M39, M40, M41, M42, M43, M44, M45, M46, M47)	M9 - AC18-08C	
401 36602-00	BLOWER HOUSING, 8" (M1, M2, M3, M4, M5, M6, M7, M8, M9, M10, M11)	M10 - AC18-08C A	
411 36649-02	COIL ASM. (LG.) (M37, M38, M39, M40, M41, M42, M43, M44, M45, M46, M47)	M11 - AC18-08C B	
411 36649-01	COIL ASM. (MED) (M26, M27, M28, M29, M30, M31, M32, M33, M34, M35, M36)	M12 - AC24-00C	
411 36649-00	COIL ASM. (SMALL) (M1, M2, M3, M4, M5, M6, M7, M8, M9, M10, M11, M12, M13, M14, M15, M16, M17, M18, M19, M20, M21, M22, M23, M24, M25)	M13 - AC24-00C A	
421 37405-00	REDUCER	M14 - AC24-05C	
9991 BT14200-12	HEATER, 10KW (M24, M25, M35, M36, M46, M47)	M15 - AC24-05C A	
9991 BT14200-10	HEATER, 5KW (M4, M5, M15, M16, M29, M30, M40, M41)	M16 - AC24-05C B	
9991 BT14200-13	HEATER, 6KW (M7, M8, M18, M19)	M17 - AC24-06C	
9991 BT14200-11	HEATER, 8KW (M1, M10, M11, M22, M23, M33, M34, M43, M44)	M18 - AC24-06C A	
		M19 - AC24-06C B	
		M20 - AC24-08C	
		M21 - AC24-08C A	
		M22 - AC24-08C B	
		M23 - AC24-10C	
		M24 - AC24-10C A	
		M25 - AC24-10C B	
		M26 - AC30-00C	
		M27 - AC30-00C A	
		M28 - AC30-05C	
		M29 - AC30-05C A	
		M30 - AC30-05C B	
		M31 - AC30-08C	
		M32 - AC30-08C A	
		M33 - AC30-08C B	
		M34 - AC30-10C	
		M35 - AC30-10C A	
		M36 - AC30-10C B	
		M37 - AC36-00C	
		M38 - AC36-00C A	
		M39 - AC36-05C	
		M40 - AC36-05C A	
		M41 - AC36-05C B	
		M42 - AC36-08C	
		M43 - AC36-08C A	
		M44 - AC36-08C B	
		M45 - AC36-10C	

The last letter of the model number represents the revision level; example: AC18-05C A is AC18-05C rev. A.