

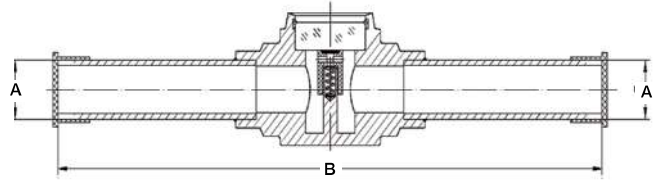
ANCILLARY PRODUCTS

ODM products are compatible with RLS fittings.

ODM Sight Glasses



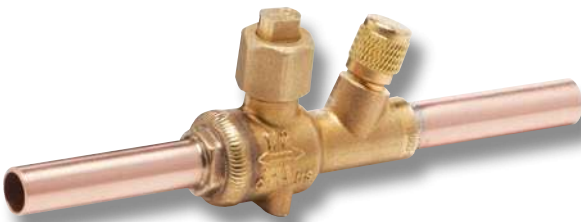
DIMENSIONS



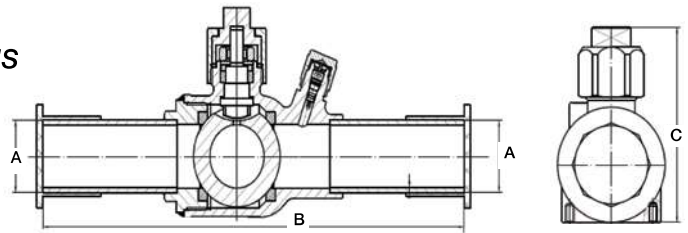
Size (Inch)	Part Number	Dimensions (Inches)		Box Quantity	Carton Quantity
		A	B		
1/4	3781040400111	0.25	4.02	1	100
3/8	3781060600111	0.37	4.69	1	100
1/2	3781080800111	0.50	6.10	1	100
5/8	3781101000111	0.63	6.14	1	50
3/4	3781121200111	0.75	6.34	1	50
7/8	3781141400111	0.88	6.57	1	50
1-1/8	3781181800111	1.13	7.56	1	30

ODM Ball Valves

(Bi-Directional with Schrader valves)



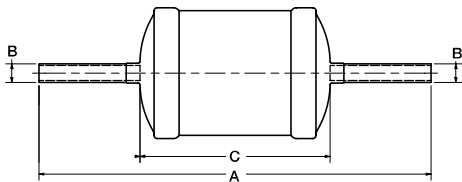
DIMENSIONS



Size (Inch)	Part Number	Dimensions (Inches)			Box Quantity	Carton Quantity
		A	B	C		
1/4	3791040400111	0.25	6.75	2.02	1	40
3/8	3791060600111	0.37	6.34	2.02	1	40
1/2	3791080800111	0.50	6.56	2.02	1	40
5/8	3791101000111	0.63	6.77	2.30	1	40
3/4	3791121200111	0.75	6.99	2.60	1	30
7/8	3791141400111	0.88	7.24	2.60	1	30
1-1/8	3791181800111	1.13	8.16	3.27	1	30
1-3/8	3791222200111	1.37	9.00	3.88	1	24

ODM Filter Driers

DIMENSIONS



Size (Inch)	Part Number	Desiccant (Cubic Inches)	Dimensions (Inches)			Box Quantity	Carton Quantity
			A	B	C		
3/8 Liquid Line	3821060600111	8	7.95	0.38	3.90	1	30
3/8 Liquid Line	3831060600111	16	8.86	0.38	4.80	1	30
1/2 Liquid Line	3831080800111	16	8.94	0.50	4.80	1	30
3/8 Liquid Line Bi-Directional	3921060600111	8	7.87	0.38	3.82	1	30
3/8 Liquid Line Bi-Directional	3931060600111	16	8.66	0.38	4.61	1	30

Part Number	Connections Inlet/Outlet	Flow Capacity Ton @ 1psi ΔP (For kw Multiply Ton By 3.5)				Water Capacity Drops of Water									
		R134a	R22 & R410A	R407C	R404A & R507	R134a		R22		R407c		R410A		R404A & R507	
						75°F	125°F	75°F	125°F	75°F	125°F	75°F	125°F	75°F	125°F
3821060600111	3/8" ODM	5.42	6.0	6.0	4.0	265	245	250	225	205	165	170	130	275	260
3831060600111	3/8" ODM	6.2	6.8	6.8	4.57	396	366	271	336	306	246	256	196	406	286
3831080800111	1/2" ODM	8.5	9.4	9.4	6.2	396	366	271	336	306	246	256	196	406	286
3921060600111	3/8" ODM	4.8	5.1	5.0	3.33	265	245	250	225	205	165	170	130	275	260
3931060600111	3/8" ODM	4.9	5.2	5.2	3.49	359	341	360	307	361	333	327	302	392	365

All ratings are in accordance with ANSI/AHRI standard 710-2009.