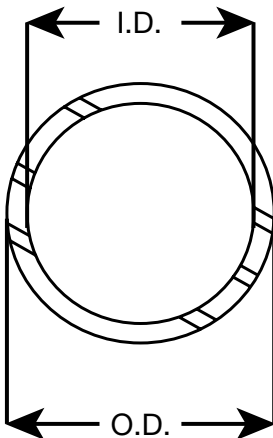


# Dimensional Documentation

**viega**

## ProPress® Stainless 1/2" - 2"

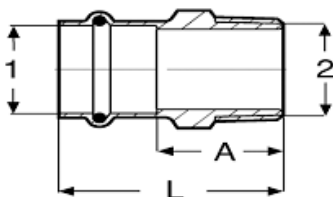
### ProPress Stainless Steel 304 ECO-Pipe ASTM A554



Catalog No.	Size	O.D. (in)	I.D. (in)	Wall Thickness	Length (ft)
87050	1/2"	0.63	0.55	0.04	20
87055	3/4"	0.88	0.78	0.05	20
87060	1"	1.13	1.04	0.05	20
87065	1-1/4"	1.38	1.27	0.06	20
87070	1-1/2"	1.63	1.52	0.06	20
87075	2"	2.13	2.02	0.06	20

### ProPress Stainless Steel 304 & 316 Pipe ASTM A312

Catalog No.		Size	O.D. (in)	I.D. (in)	Wall Thickness	Length (ft)
S/S 304	S/S 316					
87000	82000	1/2"	0.63	0.49	0.07	20
87005	82005	3/4"	0.88	0.07	0.07	20
87010	82010	1"	1.13	0.99	0.07	20
87015	82015	1-1/4"	1.38	1.24	0.07	20
87020	82020	1-1/2"	1.63	1.49	0.07	20
87025	82025	2"	2.13	1.99	0.07	20



### Adapter P x M NPT w/ EPDM Seals Model - 0111 / 4011

Catalog No.		Size	A (in)	L (in)
S/S 304	S/S 316	1 2		
85010	80010	1/2" x 1/2" NPT	1.260	2.010
85015	80015	1/2" x 3/4" NPT	1.339	2.090
85020	80020	3/4" x 1/2" NPT	1.398	2.300
85025	80025	3/4" x 3/4" NPT	1.437	2.340
85030	80030	3/4" x 1" NPT	1.693	2.600
85035	80035	1" x 3/4" NPT	1.457	2.360
85040	80040	1" x 1" NPT	1.732	2.640
85045	80045	1-1/4" x 1-1/4" NPT	1.880	2.910
85050	80050	1-1/2" x 1-1/2" NPT	1.949	3.370
85055	80055	2" x 2" NPT	2.106	3.680

**Viega... Your Connection to Innovation.**

301 N. Main, 9th Floor • Wichita, KS 67202 • Ph: 800-976-9819 • Fax: 800-976-9817 • E-Mail: insidesales@viega.com • www.viega.com

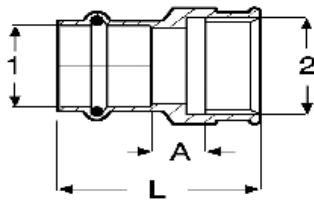
# Dimensional Documentation

**viega**

## Adapter P x M NPT w/ FKM Seals Model - 6011

Catalog No.	Size		A (in)	L (in)
	1	2		
S/S 304				
85012	1/2" x 1/2" NPT		1.260	2.010
85017	1/2" x 3/4" NPT		1.339	2.090
85022	3/4" x 1/2" NPT		1.398	2.300
85027	3/4" x 3/4" NPT		1.437	2.340
85032	3/4" x 1" NPT		1.693	2.600
85037	1" x 3/4" NPT		1.457	2.360
85042	1" x 1" NPT		1.732	2.640
85047	1-1/4" x 1-1/4" NPT		1.880	2.910
85052	1-1/2" x 1-1/2" NPT		1.949	3.370
85057	2" x 2" NPT		2.106	3.680

## Adapter P x F NPT w/ EPDM Seals Model - 0112 / 4012



Catalog No.	S/S 304	S/S 316	Size		A (in)	L (in)
			1	2		
85080		80080	1/2" x 1/2" NPT		1.024	1.772
85085		80085	3/4" x 1/2" NPT		1.240	2.146
85090		80090	3/4" x 3/4" NPT		1.181	2.087
85092		80092	1" x 1/2" NPT		1.161	2.067
85095		80095	1" x 3/4" NPT		1.240	2.146
85100		80100	1" x 1" NPT		1.299	2.205
85105		80105	1-1/4" x 1-1/4" NPT		1.329	2.362
85110		80110	1-1/2" x 1-1/4" NPT		1.407	2.835
85115		80115	1-1/2" x 1-1/2" NPT		1.407	2.835
85075		80075	2" x 1" NPT		1.604	3.189
85120		80120	2" x 1-1/2" NPT		1.447	3.031
85125		80125	2" x 2" NPT		1.489	3.071

## Adapter P x F NPT w/ FKM Seals Model - 6012

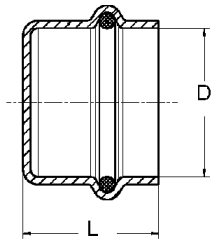
Catalog No.	Size		A (in)	L (in)
	1	2		
S/S 304				
85082	1/2" x 1/2" NPT		1.024	1.772
85087	3/4" x 1/2" NPT		1.240	2.146
85096	3/4" x 3/4" NPT		1.181	2.087
85094	1" x 1/2" NPT		1.161	2.067
85097	1" x 3/4" NPT		1.240	2.146
85102	1" x 1" NPT		1.299	2.205
85107	1-1/4" x 1-1/4" NPT		1.329	2.362
85117	1-1/2" x 1-1/2" NPT		1.407	2.835
85077	2" x 1" NPT		1.604	3.189
85122	2" x 1-1/2" NPT		1.447	3.031
85127	2" x 2" NPT		1.489	3.071

**Viega... Your Connection to Innovation.**

301 N. Main, 9th Floor • Wichita, KS 67202 • Ph: 800-976-9819 • Fax: 800-976-9817 • E-Mail: insidesales@viega.com • www.viega.com

# Dimensional Documentation

**viega**

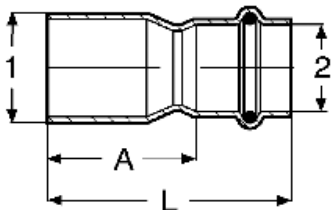


Cap P w/ EPDM Seals Model - 0156 / 4056

Catalog No.		Size	L	D
S/S 304	S/S 316		(in)	(in)
85355	80355	1/2"	0.819	0.693
85360	80360	3/4"	1.043	0.925
85365	80365	1"	1.063	0.945
85370	80370	1-1/4"	1.200	1.043
85375	80375	1-1/2"	1.594	1.435
85380	80380	2"	1.744	1.585

Cap P w/ FKM Seals Model - 6056

Catalog No.		Size	L	D
S/S 304			(in)	(in)
85357		1/2"	0.819	0.693
85362		3/4"	1.043	0.925
85367		1"	1.063	0.945
85372		1-1/4"	1.200	1.043
85377		1-1/2"	1.594	1.435
85382		2"	1.744	1.585



Reducer FTG x P w/ EPDM Seals Model - 01151 / 40151

Catalog No.		Size	A	L
S/S 304	S/S 316	1	(in)	(in)
85160	80160	3/4" x 1/2"	1.535	2.283
85165	80165	1" x 1/2"	1.831	2.579
85170	80170	1" x 3/4"	1.555	2.461
85175	80175	1-1/4" x 1/2"	2.244	2.992
85180	80180	1-1/4" x 3/4"	1.929	2.835
85185	80185	1-1/4" x 1"	1.811	2.717
85190	80190	1-1/2" x 1/2"	3.051	3.799
85195	80195	1-1/2" x 3/4"	2.618	3.524
85200	80200	1-1/2" x 1"	2.500	3.406
85205	80205	1-1/2" x 1-1/4"	2.256	3.287
85210	80210	2" x 1/2"	3.740	4.488
85215	80215	2" x 3/4"	3.465	4.370
85220	80220	2" x 1"	3.091	3.996
85225	80225	2" x 1-1/4"	2.827	3.858
85230	80230	2" x 1-1/2"	2.598	4.016

**Viega... Your Connection to Innovation.**

301 N. Main, 9th Floor • Wichita, KS 67202 • Ph: 800-976-9819 • Fax: 800-976-9817 • E-Mail: insidesales@viega.com • www.viega.com

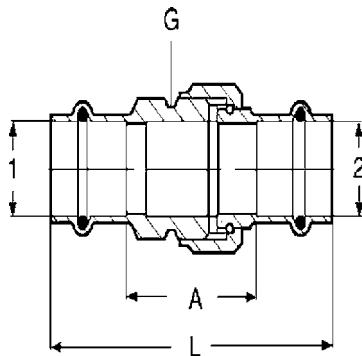
# Dimensional Documentation



## Reducer FTG x P w/ FKM Seals Model - 6015.1

Catalog No.	Size	A (in)	L (in)
<b>S/S 304</b>	<b>1</b>		
85162	3/4" x 1/2"	1.535	2.283
85167	1" x 1/2"	1.831	2.579
85172	1" x 3/4"	1.555	2.461
85177	1-1/4" x 1/2"	2.244	2.992
85182	1-1/4" x 3/4"	1.929	2.835
85187	1-1/4" x 1"	1.811	2.717
85192	1-1/2" x 1/2"	3.051	3.799
85197	1-1/2" x 3/4"	2.618	3.524
85202	1-1/2" x 1"	2.500	3.406
85212	2" x 1/2"	3.740	4.488
85217	2" x 3/4"	3.465	4.370
85222	2" x 1"	3.091	3.996
85232	2" x 1-1/2"	2.598	4.016

## Union P x P w/ EPDM Seals Model - 0160 / 4060



Catalog No.	Size	A (in)	L (in)	G	
<b>S/S 304</b>	<b>S/S 316</b>				
86005	81005	1/2"	1.858	3.354	3/4"
86010	81010	3/4"	1.850	3.661	1"
86015	81015	1"	2.224	4.035	1-1/4"
86020	81020	1-1/4"	2.224	4.291	1-1/2"
86025	81025	1-1/2"	2.677	5.531	2"
86030	81030	2"	2.953	6.122	2-1/2"

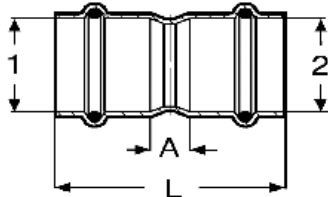
## Union P x P w/ FKM Seals Model - 6060

Catalog No.	Size	A (in)	L (in)	G
<b>S/S 304</b>				
86007	1/2"	1.858	3.354	3/4"
86012	3/4"	1.850	3.661	1"
86017	1"	2.224	4.035	1-1/4"
86022	1-1/4"	2.224	4.291	1-1/2"
86027	1-1/2"	2.677	5.531	2"
86032	2"	2.953	6.122	2-1/2"

**Viega... Your Connection to Innovation.**

301 N. Main, 9th Floor • Wichita, KS 67202 • Ph: 800-976-9819 • Fax: 800-976-9817 • E-Mail: insidesales@viega.com • www.viega.com

# Dimensional Documentation

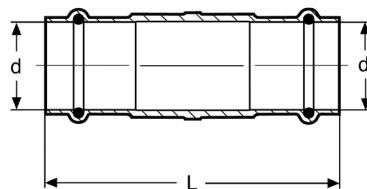


**Coupling P x P w/ Stop w/ EPDM Seals Model - 0115 / 4015**

Catalog No.		Size	A	L
S/S 304	S/S 316	1	(in)	(in)
85265	80265	1/2"	0.354	1.850
85270	80270	3/4"	0.433	2.244
85275	80275	1"	0.374	2.185
85280	80280	1-1/4"	0.461	2.528
85285	80285	1-1/2"	0.335	3.189
85290	80290	2"	0.453	3.642

**Coupling P x P w/ Stop w/ FKM Seals Model - 6015**

Catalog No.		Size	A	L
S/S 304	S/S 316	1	(in)	(in)
85267	80267	1/2"	0.354	1.850
85272	80272	3/4"	0.433	2.244
85277	80277	1"	0.374	2.185
85282	80282	1-1/4"	0.461	2.528
85287	80287	1-1/2"	0.335	3.189
85292	80292	2"	0.453	3.642



**Slip Coupling P x P w/ EPDM Seals Model - 01155 / 40155**

Catalog No.		Size	L
S/S 304	S/S 316	1	(in)
85310	80310	1/2"	1.850
85315	80315	3/4"	2.272
85320	80320	1"	2.185
85325	80325	1-1/4"	2.520
85330	80330	1-1/2"	3.189
85335	80335	2"	3.642

**Slip Coupling P x P w/ FKM Seals Model - 6015.5**

Catalog No.		Size	L
S/S 304	S/S 316	1	(in)
85312	80312	1/2"	1.850
85317	80317	3/4"	2.272
85322	80322	1"	2.185
85327	80327	1-1/4"	2.520
85332	80332	1-1/2"	3.189
85337	80337	2"	3.642

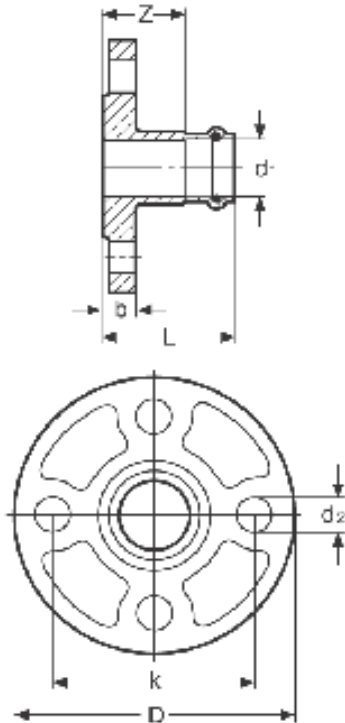
**Viega... Your Connection to Innovation.**

301 N. Main, 9th Floor • Wichita, KS 67202 • Ph: 800-976-9819 • Fax: 800-976-9817 • E-Mail: insidesales@viega.com • www.viega.com

# Dimensional Documentation

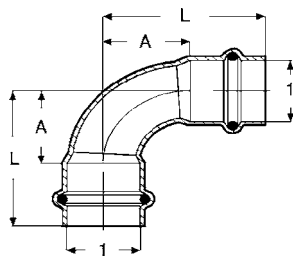
**viega**

## Flange P x Flange w/ EPDM Seals Model - 0159 / 4059



Catalog No.		Size	L	Z	b	d2	D	k
S/S 304	S/S 316	d1	(in)	(in)	(in)	(in)	(in)	(in)
86035	81035	1/2"	2.465	1.717	0.457	0.630	3.543	2.348
86040	81040	3/4"	2.587	1.681	0.520	0.630	3.937	2.756
86045	81045	1"	2.528	1.622	0.579	0.630	4.331	3.110
86050	81050	1-1/4"	2.709	1.675	0.642	0.630	4.528	3.504
86055	81055	1-1/2"	2.850	1.423	0.705	0.630	4.921	3.858
86060	81060	2"	3.878	2.293	0.768	0.748	5.906	4.764

## Elbow 90° P x P w/ EPDM Seals Model - 0116 / 4016



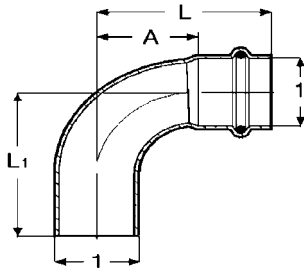
Catalog No.		Size	A	L
S/S 304	S/S 316	1	(in)	(in)
85400	80400	1/2"	1.122	1.870
85405	80405	3/4"	1.732	2.638
85410	80410	1"	1.323	2.228
85415	80415	1-1/4"	1.654	2.687
85420	80420	1-1/2"	1.984	3.413
85425	80425	2"	2.551	4.138

## Elbow 90° P x P w/ FKM Seals Model - 6016

Catalog No.		Size	A	L
S/S 304		1	(in)	(in)
85402		1/2"	1.122	1.870
85407		3/4"	1.732	2.638
85412		1"	1.323	2.228
85417		1-1/4"	1.654	2.687
85422		1-1/2"	1.984	3.413
85427		2"	2.551	4.138

**Viega... Your Connection to Innovation.**

# Dimensional Documentation

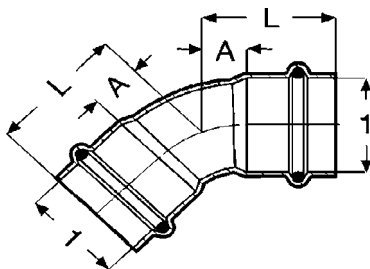


**Elbow 90° FTG x P w/ EPDM Seals Model - 01161 / 40161**

Catalog No.		Size	A	L	L1
S/S 304	S/S 316	1	(in)	(in)	(in)
85490	80490	1/2"	1.122	1.870	1.988
85495	80495	3/4"	1.449	2.354	3.031
85500	80500	1"	1.323	2.228	2.268
85505	80505	1-1/4"	1.654	2.689	2.756
85510	80510	1-1/2"	1.984	3.413	3.480
85515	80515	2"	2.551	4.138	4.205

**Elbow 90° FTG x P w/ FKM Seals Model - 6016.1**

Catalog No.		Size	A	L	L1
S/S 304		1	(in)	(in)	(in)
85492		1/2"	1.122	1.870	1.988
85497		3/4"	1.449	2.354	3.031
85502		1"	1.323	2.228	2.268
85512		1-1/2"	1.984	3.413	3.480
85517		2"	2.551	4.138	4.205



**Elbow 45° P x P w/ EPDM Seals Model - 0126 / 4026**

Catalog No.		Size	A	L
S/S 304	S/S 316	1	(in)	(in)
85445	80445	1/2"	0.571	1.319
85450	80450	3/4"	0.866	1.772
85455	80455	1"	0.547	1.453
85460	80460	1-1/4"	0.685	1.717
85465	80465	1-1/2"	0.823	2.248
85470	80470	2"	1.055	2.642

**Elbow 45° P x P w/ EPDM Seals Model - 6026**

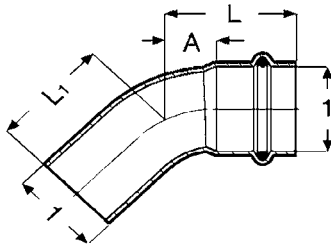
Catalog No.		Size	A	L
S/S 304		1	(in)	(in)
85447		1/2"	0.571	1.319
85452		3/4"	0.866	1.772
85457		1"	0.547	1.453
85462		1-1/4"	0.685	1.717
85467		1-1/2"	0.823	2.248
85472		2"	1.055	2.642

**Viega... Your Connection to Innovation.**

301 N. Main, 9th Floor • Wichita, KS 67202 • Ph: 800-976-9819 • Fax: 800-976-9817 • E-Mail: insidesales@viega.com • www.viega.com

# Dimensional Documentation

**viega**

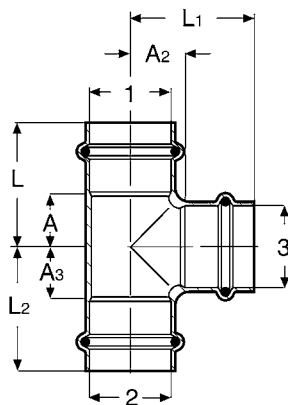


**Elbow 45° FTG x P w/ EPDM Seals Model - 01261 / 40261**

Catalog No.		Size	A	L	L1
S/S 304	S/S 316	1	(in)	(in)	(in)
85535	80535	1/2"	0.571	1.319	1.457
85540	80540	3/4"	0.685	1.591	2.272
85545	80545	1"	0.547	1.453	1.492
85550	80550	1-1/4"	0.685	1.717	1.787
85555	80555	1-1/2"	0.822	2.248	2.319
85560	80560	2"	1.055	2.642	2.709

**Elbow 45° FTG x P w/ FKM Seals Model - 6026.1**

Catalog No.		Size	A	L	L1
S/S 304		1	(in)	(in)	(in)
85537		1/2"	0.571	1.319	1.457
85542		3/4"	0.685	1.591	2.272
85547		1"	0.547	1.453	1.492
85557		1-1/2"	0.822	2.248	2.319
85562		2"	1.055	2.642	2.709



**Tee P x P x P w/ EPDM Seals Model - 0118 / 4018**

Catalog No.		Size	A	A2	A3	L	L1	L2
S/S 304	S/S 316	d1	(in)	(in)	(in)	(in)	(in)	(in)
85580	80580	1/2"	0.748	0.748	0.748	1.496	1.496	1.496
85585	80585	3/4"	0.965	0.965	0.965	1.870	1.870	1.870
85590	80590	1"	1.122	1.122	1.122	2.028	2.028	2.028
85595	80595	1-1/4"	1.033	1.033	1.033	2.067	2.067	2.067
85600	80600	1-1/2"	1.250	1.250	1.250	2.677	2.677	2.677
85605	80605	2"	1.528	1.528	1.528	3.110	3.110	3.110

**Tee P x P x P w/ FKM Seals Model - 6018**

Catalog No.		Size	A	A2	A3	L	L1	L2
S/S 304		d1	(in)	(in)	(in)	(in)	(in)	(in)
85582		1/2"	0.748	0.748	0.748	1.496	1.496	1.496
85587		3/4"	0.965	0.965	0.965	1.870	1.870	1.870
85592		1"	1.122	1.122	1.122	2.028	2.028	2.028
85597		1-1/4"	1.033	1.033	1.033	2.067	2.067	2.067
85602		1-1/2"	1.250	1.250	1.250	2.677	2.677	2.677
85607		2"	1.528	1.528	1.528	3.110	3.110	3.110

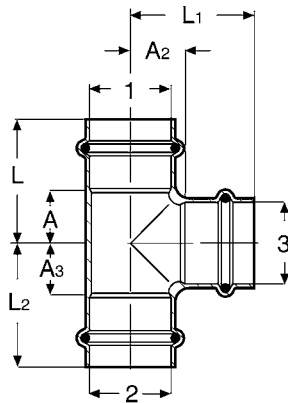
**Viega... Your Connection to Innovation.**

301 N. Main, 9th Floor • Wichita, KS 67202 • Ph: 800-976-9819 • Fax: 800-976-9817 • E-Mail: insidesales@viega.com • www.viega.com



# Dimensional Documentation

**viega**



**Reducing Tee P x P x P w/ EPDM Seals Model - 0118 / 4018**

Catalog No.		Size	A	A2	A3	L	L1	L2
S/S 304	S/S 316	d1	(in)	(in)	(in)	(in)	(in)	(in)
85630	80630	3/4" x 3/4" x 1/2"	0.965	0.925	0.965	1.870	1.673	1.870
85640	80640	1" x 1" x 1/2"	1.122	1.046	1.122	2.028	1.780	2.028
85650	80650	1" x 1" x 3/4"	1.122	1.070	1.122	2.028	1.976	2.028
85660	80660	1-1/4" x 1-1/4" x 1/2"	1.033	1.161	1.033	2.067	1.909	2.067
85670	80670	1-1/4" x 1-1/4" x 3/4"	1.033	1.220	1.033	2.067	2.126	2.067
85680	80680	1-1/4" x 1-1/4" x 1"	1.033	1.272	1.033	2.067	2.177	2.067
85690	80690	1-1/2" x 1-1/2" x 1/2"	1.250	1.315	1.250	2.677	2.063	2.677
85700	80700	1-1/2" x 1-1/2" x 3/4"	1.250	1.374	1.250	2.677	2.280	2.677
85710	80710	1-1/2" x 1-1/2" x 1"	1.250	1.425	1.250	2.677	2.330	2.677
85720	80720	2" x 2" x 1/2"	1.528	1.535	1.528	3.110	2.283	3.110
85730	80730	2" x 2" x 3/4"	1.528	1.614	1.528	3.110	2.519	3.110
85740	80740	2" x 2" x 1"	1.528	1.665	1.528	3.110	2.571	3.110
85750	80750	2" x 2" x 1-1/2"	1.528	1.488	1.528	3.110	2.913	3.110

**Reducing Tee P x P x P w/ FKM Seals Model - 6018**

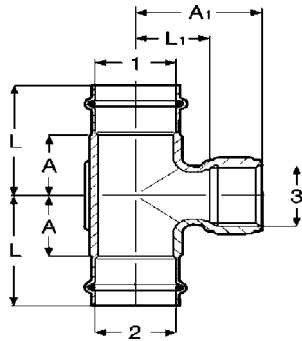
Catalog No.		Size	A	A2	A3	L	L1	L2
S/S 304		d1	(in)	(in)	(in)	(in)	(in)	(in)
85632		3/4" x 3/4" x 1/2"	0.965	0.925	0.965	1.870	1.673	1.870
85642		1" x 1" x 1/2"	1.122	1.046	1.122	2.028	1.780	2.028
85652		1" x 1" x 3/4"	1.122	1.070	1.122	2.028	1.976	2.028
85662		1-1/4" x 1-1/4" x 1/2"	1.033	1.161	1.033	2.067	1.909	2.067
85672		1-1/4" x 1-1/4" x 3/4"	1.033	1.220	1.033	2.067	2.126	2.067
85682		1-1/4" x 1-1/4" x 1"	1.033	1.272	1.033	2.067	2.177	2.067
85692		1-1/2" x 1-1/2" x 1/2"	1.250	1.315	1.250	2.677	2.063	2.677
85702		1-1/2" x 1-1/2" x 3/4"	1.250	1.374	1.250	2.677	2.280	2.677
85712		1-1/2" x 1-1/2" x 1"	1.250	1.425	1.250	2.677	2.330	2.677
85722		2" x 2" x 1/2"	1.528	1.535	1.528	3.110	2.283	3.110
85732		2" x 2" x 3/4"	1.528	1.614	1.528	3.110	2.519	3.110
85742		2" x 2" x 1"	1.528	1.665	1.528	3.110	2.571	3.110
85752		2" x 2" x 1-1/2"	1.528	1.488	1.528	3.110	2.913	3.110

**Viega... Your Connection to Innovation.**

301 N. Main, 9th Floor • Wichita, KS 67202 • Ph: 800-976-9819 • Fax: 800-976-9817 • E-Mail: insidesales@viega.com • www.viega.com

# Dimensional Documentation

**viega**



**Reducing Tee P x P x F NPT w/ EPDM Seals Model - 01172 / 40172**

Catalog No.		Size	A	A1	L	L1
S/S 304	S/S 316	d1	(in)	(in)	(in)	(in)
85820	80820	3/4" x 3/4" x 1/2" NPT	0.963	0.980	1.868	1.546
85830	80830	3/4" x 3/4" x 3/4" NPT	0.963	0.902	1.868	1.457
85840	80840	1" x 1" x 1/2" NPT	1.122	10.870	2.028	1.622
85850	80850	1" x 1" x 3/4" NPT	1.122	1.008	2.028	1.563
85860	80860	1-1/4" x 1-1/4" x 1/2" NPT	1.033	1.236	2.067	1.772
85870	80870	1-1/4" x 1-1/4" x 3/4" NPT	1.033	1.157	2.067	1.713
85880	80880	1-1/4" x 1-1/4" x 1" NPT	1.033	1.130	2.067	1.791
85890	80890	1-1/2" x 1-1/2" x 1/2" NPT	1.250	1.388	2.677	1.924
85900	80900	1-1/2" x 1-1/2" x 3/4" NPT	1.250	1.309	2.677	1.865
85910	80910	1-1/2" x 1-1/2" x 1" NPT	1.250	1.282	2.677	1.943
85920	80920	2" x 2" x 1/2" NPT	1.528	1.610	3.110	2.146
85930	80930	2" x 2" x 3/4" NPT	1.528	1.531	3.110	2.087
85940	80940	2" x 2" x 1" NPT	1.528	1.504	3.110	2.165

**Reducing Tee P x P x F NPT w/ FKM Seals Model - 6017.2**

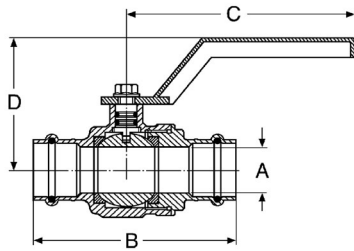
Catalog No.		Size	A	A1	L	L1
S/S 304		d1	(in)	(in)	(in)	(in)
85822		3/4" x 3/4" x 1/2" NPT	0.963	0.980	1.868	1.546
85832		3/4" x 3/4" x 3/4" NPT	0.963	0.902	1.868	1.457
85842		1" x 1" x 1/2" NPT	1.122	10.870	2.028	1.622
85852		1" x 1" x 3/4" NPT	1.122	1.008	2.028	1.563
85862		1-1/4" x 1-1/4" x 1/2" NPT	1.033	1.236	2.067	1.772
85872		1-1/4" x 1-1/4" x 3/4" NPT	1.033	1.157	2.067	1.713
85882		1-1/4" x 1-1/4" x 1" NPT	1.033	1.130	2.067	1.791
85892		1-1/2" x 1-1/2" x 1/2" NPT	1.250	1.388	2.677	1.924
85902		1-1/2" x 1-1/2" x 3/4" NPT	1.250	1.309	2.677	1.865
85912		1-1/2" x 1-1/2" x 1" NPT	1.250	1.282	2.677	1.943
85922		2" x 2" x 1/2" NPT	1.528	1.610	3.110	2.146
85932		2" x 2" x 3/4" NPT	1.528	1.531	3.110	2.087
85942		2" x 2" x 1" NPT	1.528	1.504	3.110	2.165

**Viega... Your Connection to Innovation.**

301 N. Main, 9th Floor • Wichita, KS 67202 • Ph: 800-976-9819 • Fax: 800-976-9817 • E-Mail: insidesales@viega.com • www.viega.com

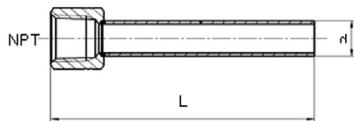
# Dimensional Documentation

**viega**



**316 Stainless Steel Ball Valve P x P w/ EPDM Seals Model - 4070**

Catalog No.	Size	A (in)	B (in)	C (in)	D (in)
S/S 316					
81080	1/2"	0.650	3.543	4.331	2.382
81085	3/4"	0.787	4.193	4.331	2.461
81090	1"	0.984	4.567	4.823	2.795
81095	1-1/4"	1.260	5.217	4.823	3.228
81100	1-1/2"	1.575	6.496	5.315	3.661
81105	2"	1.969	7.323	5.315	3.976



**Instrument Adapter Model - 40125**

Catalog No.	Size	L (in)	d (in)
S/S 316	NPT		
80126	1/2"	4.000	1.870
80127	3/4"	4.000	2.354

**Viega... Your Connection to Innovation.**

301 N. Main, 9th Floor • Wichita, KS 67202 • Ph: 800-976-9819 • Fax: 800-976-9817 • E-Mail: insidesales@viega.com • www.viega.com