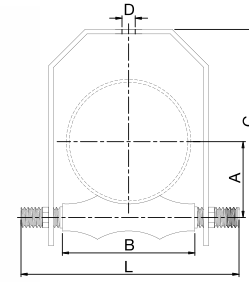




# CLEVIS ROLLER HANGER



Designed for suspending pipe with vertical adjustment

- Maximum temperature 450° F
- Complies with Federal Specification A-A-1192A Type 43, WW-H-171-E Type 44, ANSI/MSS SP-69 and MSS SP-58 Type 43
- Non conductive, corrosion resistant Pipe Rollers for protection against severe weather conditions and moderate corrosive conditions such as marine atmospheres.

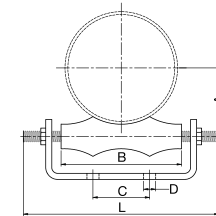
Sizes: 2" - 16"

Material: Steel

Finish: Hot Dipped Galvanized

Approvals: Complies with ANSI/MSS SP-69 MSS SP-58 Type 43, A-A-1192A Type 43, WW-H-171-E Type44

SIZE INCHES	ITEM GALVANIZED	MAX LOAD	WEIGHT	A	B	C	D	L	EACH	PALLET QTY
2"	HRYA-HD02	150	0.98	1-5/8	2-7/8	4-3/8	7/16	4	1	1300
3"	HRYA-HD03	310	1.61	1-1/4	3-3/4	6-3/8	9/16	5	1	730
4"	HRYA-HD04	475	2.61	2-3/4	4-3/4	7-1/2	11/16	6	1	440
5"	HRYA-HD05	685	4.42	3-1/2	5-3/4	8-5/8	13/16	8	1	200
6"	HRYA-HD06	780	5.86	4	6-7/8	10-1/4	13/16	9	1	150
8"	HRYA-HD08	780	12.08	5-1/8	8-7/8	12-3/4	13/16	12	1	80
10"	HRYA-HD10	965	18.34	6-3/8	11	15	15/16	14-1/2	1	70
12"	HRYA-HD12	1,200	25.3	7-1/2	12-1/2	17-3/8	15/16	16-1/2	1	50
14"	HRYA-HD14	1,200	36.01	8-3/8	14-3/8	18-7/8	1-1/16	18	1	30
16"	HRYA-HD16	1,200	43.68	9-1/2	16-3/8	20-3/4	1-1/16	20-1/2	1	20



# PIPE ROLLER CHAIR

Designed for supporting pipe in horizontal applications

- Maximum temperature 450° F
- Complies with Federal Specification A-A-1192A Type 44, WW-H-171-E Type 45, ANSI/MSS SP-69 and MSS SP-58 Type 44
- Non conductive, corrosion resistant Pipe Rollers for protection against severe weather conditions and moderate corrosive conditions such as marine atmospheres.

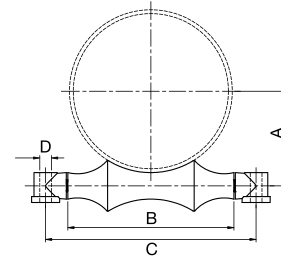
Sizes: 2" - 16"

Material: Steel

Finish: Hot Dipped Galvanized

Approvals: Complies with ANSI/MSS SP-69 MSS SP-58 Type 44, A-A-1192A Type 44, WW-H-171-E Type45

SIZE INCHES	ITEM GALVANIZED	MAX LOAD	WEIGHT	A	B	C	D	L	EACH	PALLET QTY
2"	HRC-HD02	600	0.82	1-5/8	2-7/8	1-1/4	0.42	4	1	2600
3"	HRC-HD03	700	1.4	2-1/4	3-3/4	2	0.42	5	1	1500
4"	HRC-HD04	750	2.64	2-3/4	4-3/4	2	0.54	6	1	800
5"	HRC-HD05	750	3.02	3-1/2	5-3/4	3	0.54	8	1	700
6"	HRC-HD06	1,070	5.29	4	6-7/8	3-1/8	0.54	9	1	400
8"	HRC-HD08	1,350	7.58	5-1/8	8-7/8	3-3/8	0.67	12	1	280
10"	HRC-HD10	1,730	13	6-3/8	11	5-1/4	0.67	14-1/2	1	160
12"	HRC-HD12	2,400	19	7-1/2	12-1/2	5-1/2	0.67	16-1/2	1	110
14"	HRC-HD14	3,130	28.04	8-3/8	14-3/8	6-1/2	0.67	18	1	70
16"	HRC-HD16	3,970	37.61	9-1/2	16-3/8	8-1/4	0.67	20-1/2	1	50



## PIPE ROLLER W/ SOCKET

Designed for suspension of pipe from two rods

- Maximum temperature 450° F
- Complies with Federal Specification A-A-1192A Type 41, WW-H-171-E Type 42, ANSI/MSS SP-69 and MSS SP-58 Type 41
- Provides for vertical adjustment; nut at bottom of hanger rod fits into the socket preventing loosening or turning due to vibration.

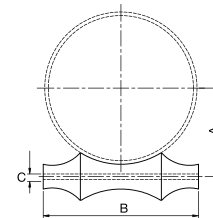
Sizes: 2" - 16"

Material: Steel

Finish: Hot Dipped Galvanized

Approvals: Complies with ANSI/MSS SP-69  
MSS SP-58 Type 41, A-A-1192A  
Type 41, WW-H-171-E Type 42

SIZE INCHES	ITEM GALVANIZED	MAX LOAD	WEIGHT	A	B	C	D	EACH	PALLET QTY
2"	HRSA-HD02	600	0.55	1-5/8	2-7/8	4-1/2	1/2	1	3850
3"	HRSA-HD03	700	1.09	2-1/4	3/3/4	5-9/16	5/8	1	1950
4"	HRSA-HD04	750	1.6	3-3/4	4-3/4	6-3/4	3/4	1	1300
5"	HRSA-HD05	750	2.34	3-1/2	5-3/4	8-3/8	13/16	1	900
6"	HRSA-HD06	1,070	3.99	4	6-7/8	9-7/8	7/8	1	520
8"	HRSA-HD08	1,350	5.95	5-1/8	8-7/8	12	1	1	350
10"	HRSA-HD10	1,730	8.49	6-3/8	11	14	1	1	250
12"	HRSA-HD12	2,400	13.23	7-1/2	12-1/2	16-1/5	1	1	160
14"	HRSA-HD14	3,130	21.77	8-3/8	14-3/8	17-3/4	1-1/8	1	80
16"	HRSA-HD16	3,970	29.99	9-1/2	16-3/8	20-3/4	1-1/8	1	70



## PIPE ROLLER REPLACEMENT

Replacement Pipe Roller Coupling

- Maximum temperature 450° F
- Complies with Federal Specification A-A-1192A, WW-H-171-E, ANSI/MSS SP-69 and MSS SP-58
- For use to replace Roller on Clevis Roller Hangers, Pipe Roller Chairs, & Pipe Rollers with Socket.

Sizes: 2" - 16"

Material: Steel

Finish: Hot Dipped Galvanized

Approvals: Complies with ANSI/MSS SP-69  
MSS SP-58, A-A-1192A  
WW-H-171-E

SIZE INCHES	ITEM GALVANIZED	MAX LOAD	WEIGHT	A	B	C	EACH	PALLET QTY
2"	HRSP-HD02	200	0.2	1-5/8	2-7/8	7/16	1	10500
3"	HRSP-HD03	200	0.4	2-1/4	3-3/4	9/16	1	5090
4"	HRSP-HD04	300	0.6	2-3/4	4-3/4	9/16	1	2520
5"	HRSP-HD05	300	0.95	3-1/2	5-3/4	11/16	1	1820
6"	HRSP-HD06	300	1.32	4	6-7/8	13/16	1	1200
8"	HRSP-HD08	300	2.71	4	8-7/8	15/16	1	650
10"	HRSP-HD10	400	4.64	6-3/8	11	15/16	1	360
12"	HRSP-HD12	400	8.38	7-1/2	12-1/2	1-1/16	1	230
14"	HRSP-HD14	450	13.13	8-3/8	14-3/8	1-1/4	1	130
16"	HRSP-HD16	550	16.51	9-1/2	16-3/8	1-3/8	1	100

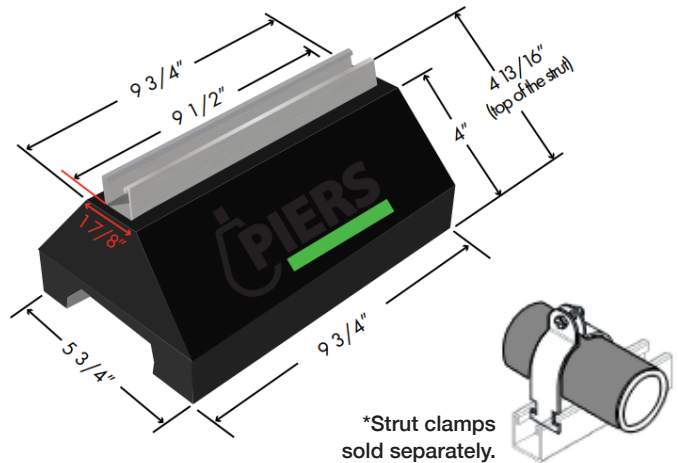
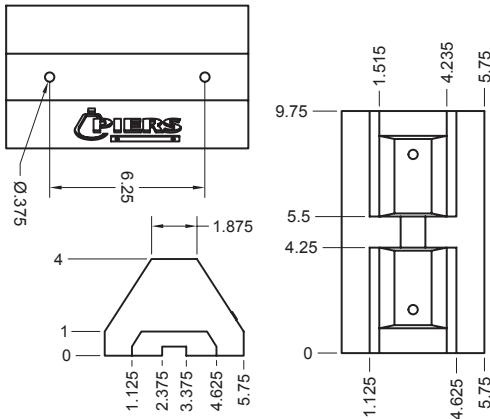


# ROOFTOP SUPPORT BLOCK



**MADE FROM 100%  
RECYCLED RUBBER  
ENVIRONMENTALLY FRIENDLY**

Support Block is designed for superior support of piping systems, cable tray, electrical conduit, HVAC equipment and many other applications. It is UV resistant and suitable for installation on most types of roofing material or other flat surfaces. Can be used as a curb (sleeper) replacement.



## Rooftop Support Block

### Features

- Made from High Grade Recycled Rubber
- Green Reflector for High Visibility and Safety
- Available with and without strut
- Screw fasteners can be used to attach one or two hole pipe straps or a piece of strut
- UV resistant
- Dampens vibrations

**Sizes:** 1-5/8" x 13/16"

**Block Material:** Recycled Rubber

**Strut Material:** Pregalvanized Steel

**Weight (lbs):** 5.2

**Static Load Capacity (lbs):** 750

ITEM	DESCRIPTION	HEIGHT	LENGTH	WIDTH	INNER QTY	PALLET QTY	TRUCKLOAD QTY
RSB-10S	10" Rooftop Support Block with Strut	4-13/16"	9-3/4"	5-3/4"	1	352	8448
RSB-10	10" Rooftop Support Block without Strut	4"	9-3/4"	5-3/4"	1	360	8640