

Date:	For: <input type="checkbox"/> File <input type="checkbox"/> Resubmit
PO No.:	<input type="checkbox"/> Approval <input type="checkbox"/> Other _____
Architect:	GC:
Engr:	Mech:
Rep:	
<small>(Company)</small>	<small>(Project Manager)</small>



PMBD3630
3-Port Branch Distribution Unit (BD Unit)



Performance:

Max Port Capacity Btu/h (each port)	24,000
Max Unit Capacity Btu/h (sum of ports)	72,000
Power Input (W)	10

Electrical:

Power Supply (V ¹ /Hz/∅)	208-230/60/1
Rated Amps (A)	0.1

Piping:

Piping Connection to Outdoor Unit:

Liquid Line (in, OD)	3/8
Vapor Line (in, OD)	3/4

Piping Connection to Indoor Unit:

Liquid Line (in, OD)	1/4 (Qty 3)
Vapor Line (in, OD)	3/8 (Qty 3)

Standard Features:

- Distributes refrigerant to indoor units
- Internal components are insulated
- Flare joints provided for easy installation
- Compact design

Unit Data:

Net Weight (lbs)	15
Shipping Weight (lbs)	17
Communication Cable to IDUs ² (No x AWG)	4 x 18
Communication Cable to ODUs ² (No x AWG)	4 x 16

IDU - Indoor Unit ODU - Outdoor Unit

Notes:

1. Acceptable operating voltage: 187V-253V.
2. All communication cable to be minimum 18 AWG, 2-conductor, stranded, shielded and must comply with applicable local and national code.
3. Piping lengths:
 - Maximum height difference between BD unit and indoor units - 32.8 ft
 - Maximum height difference between BD unit and BD unit - 49.2 ft.
 - Maximum piping length between BD unit and indoor units - 49.2 ft
4. The BD unit should be installed inside of a building.
5. Must follow installation instructions in the applicable LG installation manual.
6. Power wiring cable size must comply with the applicable local and national code.



PMBD3630

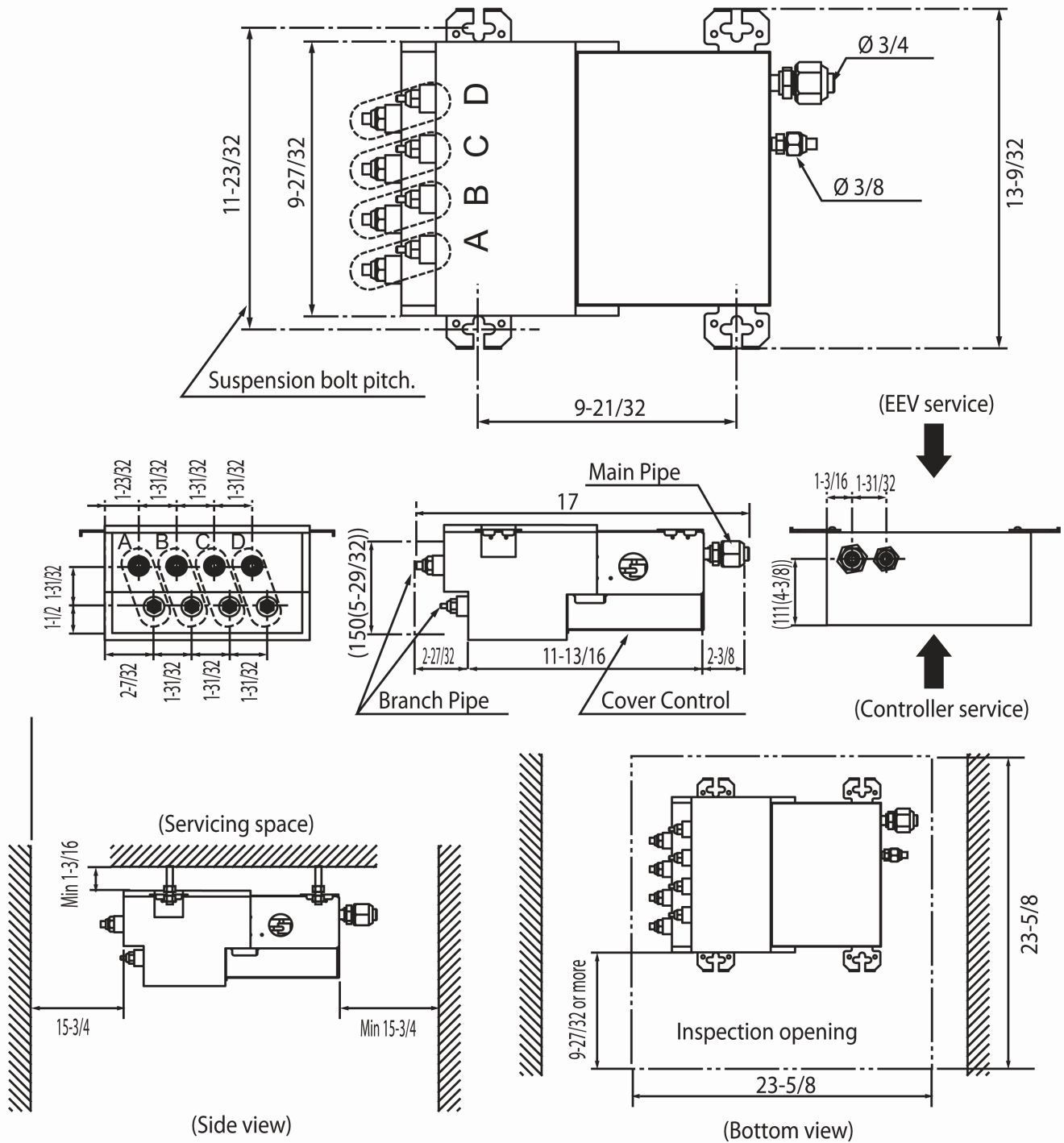
3-Port Branch Distribution Unit (BD Unit)



Tag #:

Date:

PO No.:



(EEV service)

(Controller service)

(Side view)

(Bottom view)

Unit: inch

Notes

1. For PMBD3620 unit, ports A & B are available.
2. For PMBD3630 unit, ports A, B & C are available.
3. For PMBD3640 unit, ports A, B, C & D are available.