



# MODA™ WASHING MACHINE OUTLET BOX (SINGLE) TECHNICAL SPECIFICATION

Job Name _____	Item # _____
Location _____	
Engineer _____	Contractor _____
PO # _____	Tag _____
Representative _____	

## SPECIFICATIONS

Oatey MODA™ washing machine outlet boxes shall be used in residential or commercial applications requiring supply valves and a waste drain recessed in the wall. The MODA™ washing machine assembly contains two supply valves and a drain connection, with inter-locking wing flanges on each side. Box shall be manufactured of PVC, allowing solvent welded joints to be prepared in accordance with ASTM D2855 for PVC drainage systems (without the use of specialty cements). The wing flanges shall allow installation on a single stud, or between two studs in combination with the included side brackets. No additional components shall be required for a between stud installation. Valves shall be a two-piece design, permitting field replacement, and shall be secured with a stainless steel retention clip. Valves are available with or without water hammer arrestors and shall be installed in an inverted configuration. The assembly shall include a knockout cap for DWV testing.

## APPROVALS & LISTINGS

Valves	ASME A112.18.1 / CSA B125.1 / ANSI 61 + 372
Water Hammer Arrestors	ASSE 1010
Boxes	IAPMO-Listed, PS-54



## FEATURES & MATERIALS

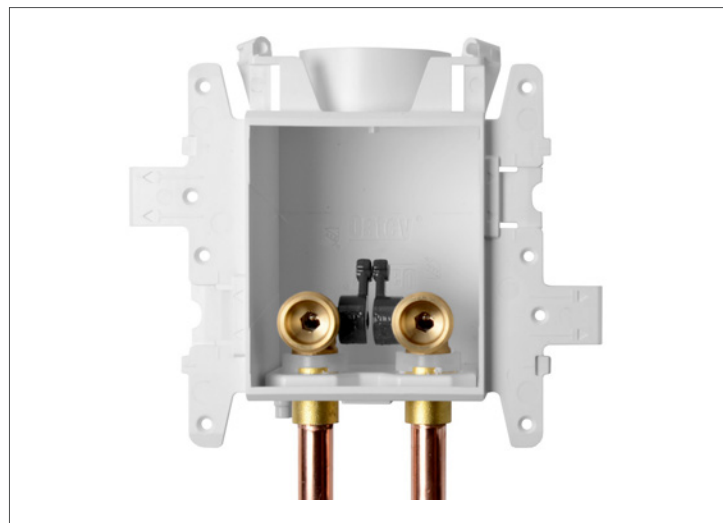
Outlet Box & Brackets	PVC
Valve Body	Forged Brass C37700
Valve Retention Clip	Stainless Steel
Valve O-Rings	NSF/FDA Approved EPDM (2)

## PERFORMANCE SPECIFICATIONS

Temperature Rating (Valve)	250° F / 121° C
Max Testing Pressure (Valve)	100 psi (Air) / 250 psi (Water)

## DIMENSIONS

[A]:	Box Width	8.00"	[E]:	Bracket Length	8.00"
[B]:	Box Depth	3.38"	[F]:	Faceplate Width	6.00"
[C]:	Box Height	4.85"	[G]:	Faceplate Height	6.45"
[D]:	Bracket Width	4.00"	[H]:	Faceplate Depth	1.25"



## Accessory Components Included:



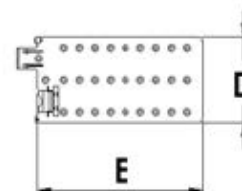
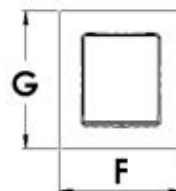
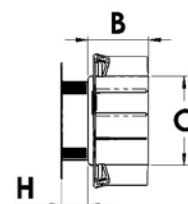
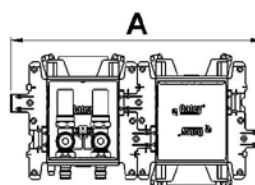
Side Brackets (2)



Faceplate



Sticker Cover  
(For Debris Protection)



Access BIM/Revit content through [www.oatey.com](http://www.oatey.com)



**MODA™ WASHING MACHINE  
OUTLET BOX (SINGLE)  
TECHNICAL SPECIFICATION**

**PRODUCT SELECTOR**

NO HAMMER ARRESTORS				HAMMER ARRESTORS			
✓	Product Number	Description	Ctn. Qty.	✓	Product Number	Description	Ctn. Qty.
	37540	MODA Washing Machine, Copper (Male), Standard	12		37550	MODA Washing Machine, Copper (Male), Standard	12
	37541	MODA Washing Machine, F1807 PEX (Brass) Standard	12		37551	MODA Washing Machine, F1807 PEX (Brass) Standard	12
	37542	MODA Washing Machine, F2159 PEX (PPSU) Standard	12		37552	MODA Washing Machine, F2159 PEX (PPSU) Standard	12
	37543	MODA Washing Machine, F1960 PEX (Brass) Standard	12		37553	MODA Washing Machine, F1960 PEX (Brass) Standard	12
	37544	MODA Washing Machine, F1960 PEX (PPSU) Standard	12		37554	MODA Washing Machine, F1960 PEX (PPSU) Standard	12
	37545	MODA Washing Machine, CPVC (Male) Standard	12		37555	MODA Washing Machine, CPVC (Male) Standard	12
	37546	MODA Washing Machine, Push Connect Standard	12		37556	MODA Washing Machine, Push Connect Standard	12