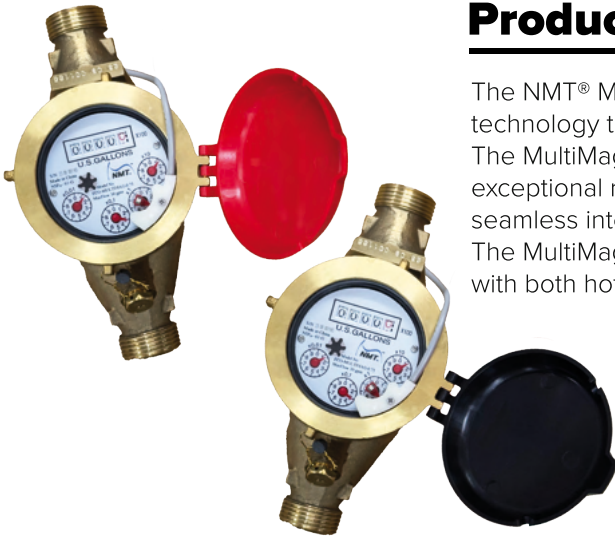


MultiMag™



Product Summary



The NMT® MultiMag™ series water meters are engineered using advanced multijet technology to deliver precise water measurement with exceptional reliability and durability. The MultiMag™ is tested to the most recent AWWA C708 accuracy standards while having exceptional reliability and durability. With pulse output capabilities, these meters offer seamless integration for remote reading applications, enhancing flexibility and ease of use. The MultiMag™ is optimized for horizontal installation and is available in a range of sizes, with both hot and cold water models to suit diverse operational needs.

Features

- Meets AWWA C708 Accuracy.
- Hot and Cold meter models.
- Pulse output.
- NSF61 and NSF372 approved.
- Gallons or cubic meter register.



Technical Characteristics

Temperature. 105°F, 41°C (Cold). 194°F, 90°C (Hot).
 Max pressure. 105 psi.
 Materials. ECO brass - no lead (body). Thermoplastic (internals).
 Pulse output. 6 mA @ 12 VDC.
 Pulse value. 1/1 gal (1/1 L) or 1/10 gal (1/10 L).

MultiMag™ Flow Rate

Flow Rate: gpm/(m ³ /hr)					
GPM	3/4" (19 mm)	1" (25 mm)	1 1/2" (38 mm)	2" (50 mm)	% Error
Min	0.5 (0.11)	0.75 (0.17)	1.5 (0.34)	2 (0.45)	3
Max	30 (6.8)	50 (11.4)	100 (22.7)	160 (36)	1.5
Continuous	15 (3.4)	25 (5.7)	50 (11.4)	80 (18)	
Range	2 - 30 (0.45 - 6.8)	3 - 50 (0.68 - 11.4)	5 - 100 (11.1 - 22.7)	8 - 160 (1.18 - 36)	

MultiMag™



MultiMag™ Dimensions

Dimensions: inches/(mm)				
	3/4" (19 mm)	1" (25 mm)	1 1/2" (38 mm)	2" (50 mm)
A	11.5" (292)	15.6" (396)	17.8" (452)	21.0" (533)
B	7.5" (190.5)	10.75" (273)	12.625" (320)	15.25" (387)
C	5.3" (134.6)	5.3" (134.6)	6.8" (172.7)	6.8" (172.7)
D	3.9" (99)	3.9" (99)	4.8" (122)	4.8" (122)
Weight	4 lb. (1.8 kg)	5 lb. (2.3 kg)	10 lb. (4.5 kg)	14 lb. (6.4 kg)

