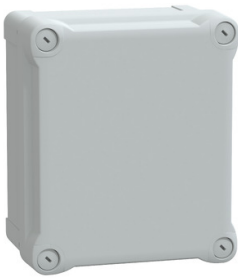


Product data sheet

Specifications



PC box IP66 IK08 RAL7035
Int.H175W150D100
Ext.H193W164D105 opaque PC
cover H40

NSYTBP191610H

Main

Range	Thalassa
Product name	Thalassa TBP
Device application	Multi-purpose
Category	Industrial box
Height	192 mm
Width	164 mm
Depth	105 mm
Internal height	175 mm
Internal width	150 mm
Internal depth	100 mm
Enclosure mounting	Wall mounted
Device composition	1 body 1 cover 4 cover screw
Body type	One piece moulded
Type of front cover	High plain cover
Cover fixing	Plastic screws
Lock type	Captive screw flat outside sealed area
Removable parts	Cover by captive screws

Complementary

Material	Polycarbonate
Colour	Grey (RAL 7035)
Standards	UL 508 A IEC 62208
Product certifications	TÜV UL
Electrical insulation class	Class II
Mounting location	Outdoor (with canopy or shelter and anticondensation valve)
Net weight	0.62 kg

Environment

IP degree of protection	IP66 conforming to NEMA 4.4X
-------------------------	------------------------------

IK degree of protection	IK08 conforming to IEC 62262
Fire resistance	960 °C
Ambient air temperature for storage	-15...60 °C
Operating temperature	-25...80 °C

Packing Units

Unit Type of Package 1	PCE
Number of Units in Package 1	1
Package 1 Height	12.000 cm
Package 1 Width	17.000 cm
Package 1 Length	20.500 cm
Package 1 Weight	597.000 g
Unit Type of Package 2	CAR
Number of Units in Package 2	17
Package 2 Height	40.000 cm
Package 2 Width	41.000 cm
Package 2 Length	61.000 cm
Package 2 Weight	10.940 kg
Unit Type of Package 3	P12
Number of Units in Package 3	204
Package 3 Height	137.000 cm
Package 3 Width	80.000 cm
Package 3 Length	120.000 cm
Package 3 Weight	141.000 kg

Contractual warranty

Warranty	18 months
-----------------	-----------

Environmental Data

Schneider Electric aims to achieve Net Zero status by 2050 through supply chain partnerships, lower impact materials, and circularity via our ongoing “Use Better, Use Longer, Use Again” campaign to extend product lifetimes and recyclability.

[How this information helps you >](#)

Environmental footprint

[Environmental Disclosure](#)

[Product Environmental Profile](#)

Use Better

Materials and Substances

Packaging made with recycled cardboard **No**

Packaging without single use plastic **No**

[EU RoHS Directive](#)

**Pro-active compliance
(Product out of EU RoHS legal scope)**

REACH Regulation

[REACH Declaration](#)

China RoHS Regulation

[China RoHS declaration](#)

Use Again

Repack and remanufacture

[Circularity Profile](#)

[End of Life Information](#)

Take-back **No**

Image of product / Alternate images

Alternative

