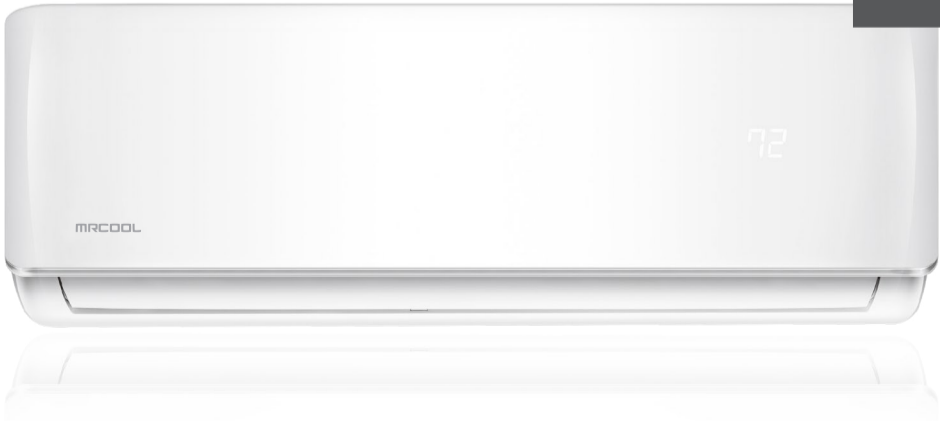




# QUICK STEP Setup Guide for MRCOOL DIY Series [GEN2]

WiFi

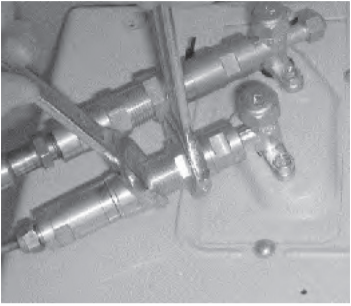
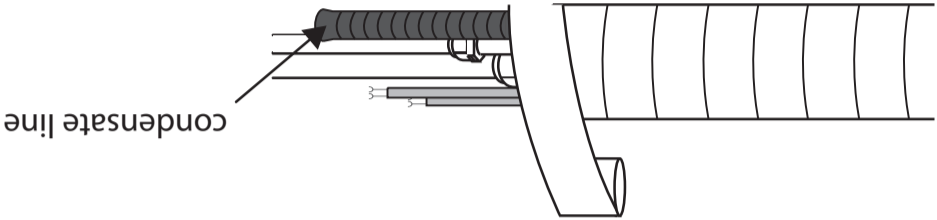


www.mrcool.com



## STEP 4

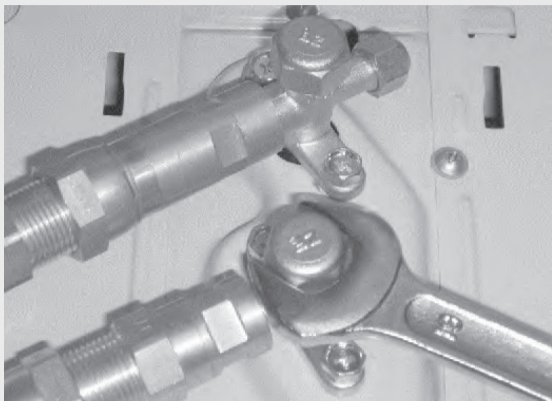
- Place the outside condenser unit firmly on the ground outside or attach it to a secure metal wall bracket or pad.
- Carefully roll the excess tubing and place it behind the condenser.
- Attach the bundle connections to the outside condenser.



- Using the 2 open wrenches, screw the quick connect components together. One will tighten the connection and the other will hold the copper from twisting. Failing to use the appropriate tools during installation may void the warranty.
- Take care and ensure you use two wrenches for this task. If you use only one open wrench, the connection to the outside condenser will fail to be sufficiently tight. This may cause the soft copper to bend and leak.

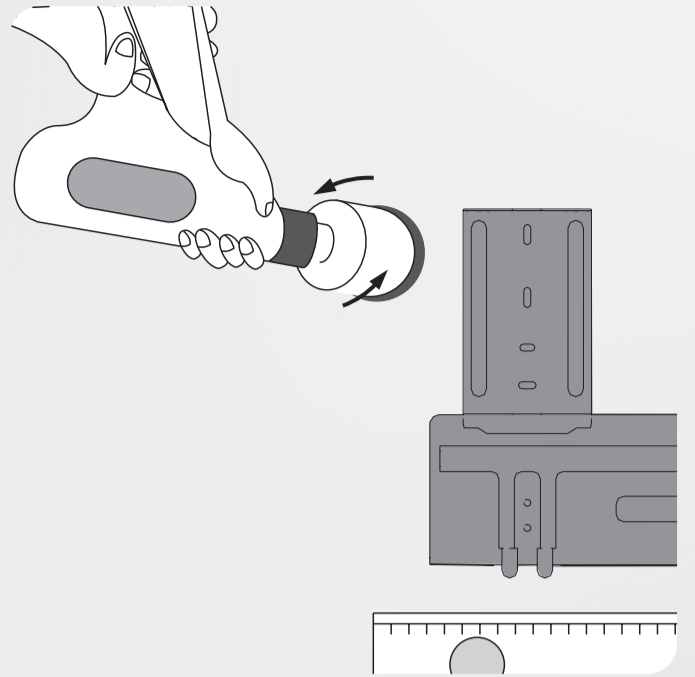
## STEP 6

- Remove the electrical cover.
- CAUTION: At this point, be sure you know if your unit is the 110 volt or the 220 volt. Connecting incorrect voltage to the unit will cause serious damage to the system and void the warranty.
- Allow a certified electrician to supply power to the unit in accordance with all municipal, state, and federal regulations that may apply.
- If the unit is the 110 volt system, hook to terminal L1 and N, and ground.
- If the unit is the 220 volt system, attach to terminals L1 and L2, and ground.
- Attach the air handler plug to the communication plug on the system.
- Push firmly over the wire harness on the condenser to ensure the quick connect is solid.
- You will need a Phillips screwdriver to attach the green ground wire to the condenser.



- Remove the brass caps from the valves on the exterior condenser unit.
- Use an allen wrench to open the valve until it fails to turn any further. Be sure not to exert excessive force on the valve. During this activity, you may hear a soft hissing sound as a slight amount of R-410a refrigerant exits the condenser.
- Apply soapy water or leak detection spray to the quick connect fittings. If you see bubbles, this indicates there is a leak. Tighten the connection accordingly until the bubbles disappear.

## STEP 7

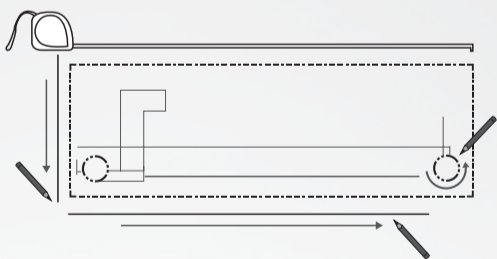


- Drill through the wall to accommodate the copper lineset, condensate drain, and wire connection to the exterior condenser.
- Insert the protective wall sleeve.
- Bundle the copper lineset, condensate drain, and wire connection. The condensate drain MUST be on the bottom of the bundle.
- Push the bundled lineset, drain, and wire through the wall hole.
- Snap the air handler into place on the previously mounted metal wall bracket.

## STEP 3

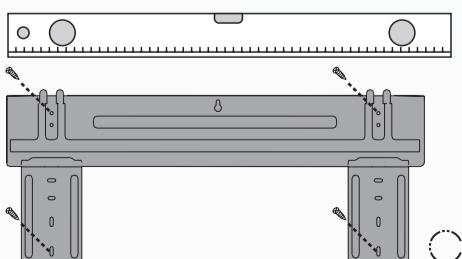
## STEP 1

- Locate the wall template.
- Place the template on the wall at the installation location.
- Leave sufficient space for the wall hole
- Use the template to mark the indicated drill points and wall hole site.
- Remove the wall template.



## STEP 2

- Drill screw holes at the indicated points into studs.
- Remove the metal bracket from the rear of the interior air handler.
- Screw the metal bracket to the wall in accordance with the template outline.
- Use a level and Ensure the mounting plate is flush with the wall.



## STEP 8

- Place the provided batteries in the remote control.
- Press the Power button on the remote control.
- The MrCool DIY Series unit should activate automatically.
- If you wish to use your smartphone, refer to the SMART CONTROLLER Manual, located in the SMART CONTROLLER box for setting up **WiFi control** via the **MRCOOL app**

Enjoy!

WiFi

