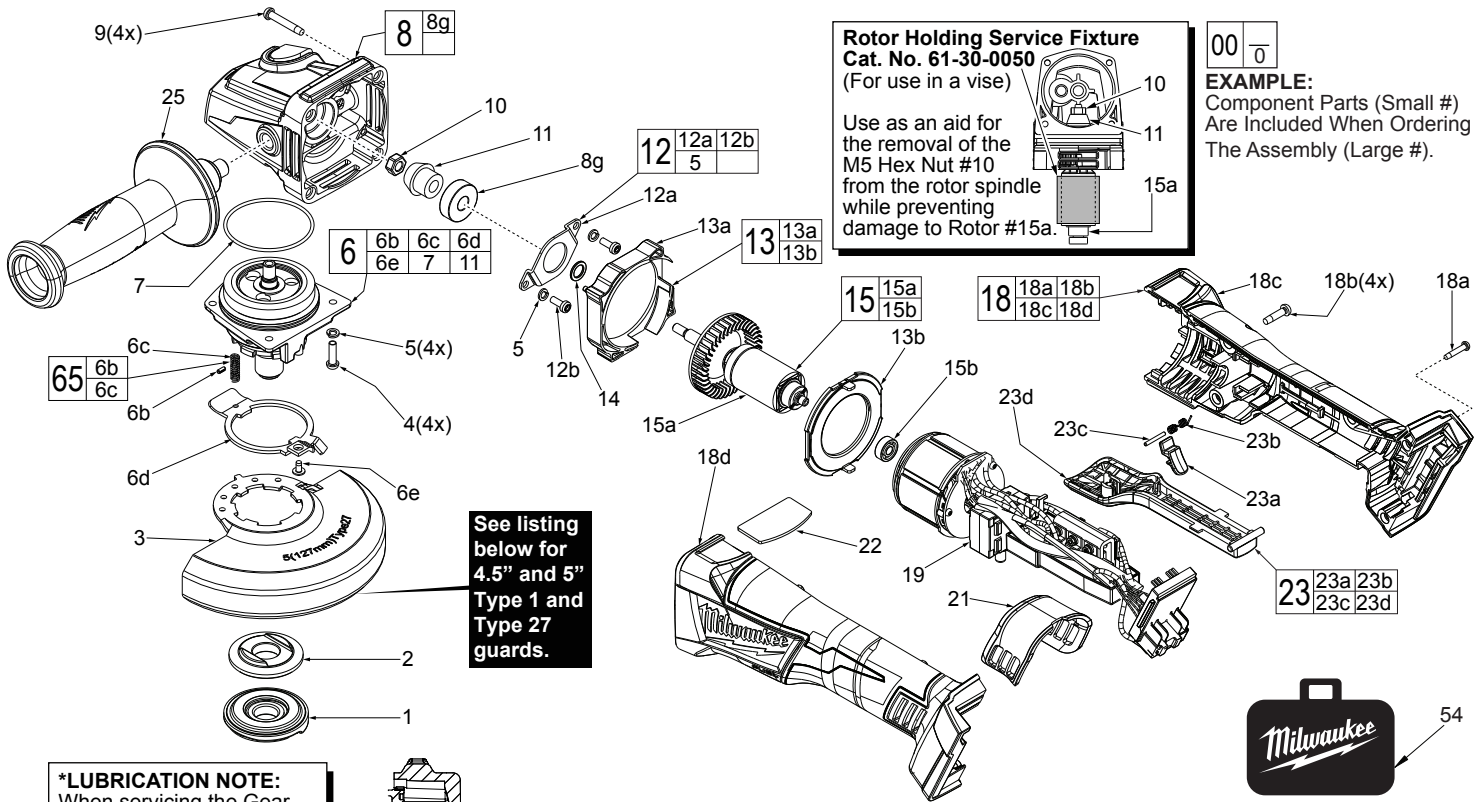




SERVICE PARTS LIST

BULLETIN NO.
54-38-7021

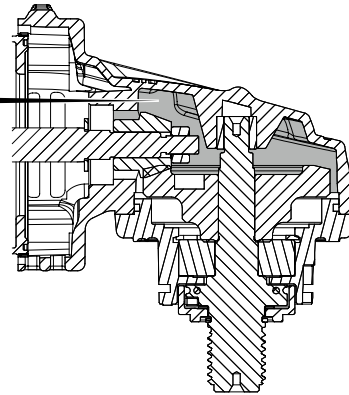
SPECIFY CATALOG NO. AND SERIAL NO. WHEN ORDERING PARTS		REVISED BULLETIN 54-38-7020	DATE Jan. 2017
M18 FUEL™ Braking Grinder w/ Paddle Switch & Lock-Off			
CATALOG NO. 2783-20	STARTING SERIAL NO.	G48B	
		WIRING INSTRUCTION SEE PAGE 2	



***LUBRICATION NOTE:**
When servicing the Gear Case Assembly, 90-95% of the old grease must be removed prior to new grease being added.

FIG. 6,11 LUBRICATION*
Type "Y" Grease, No. 49-08-5270, Must Be Applied To All Gear Teeth.

8 Place 19g ± 0.5 (approx. 5/8 oz) of "Y" grease in gear cavity of gearcase.

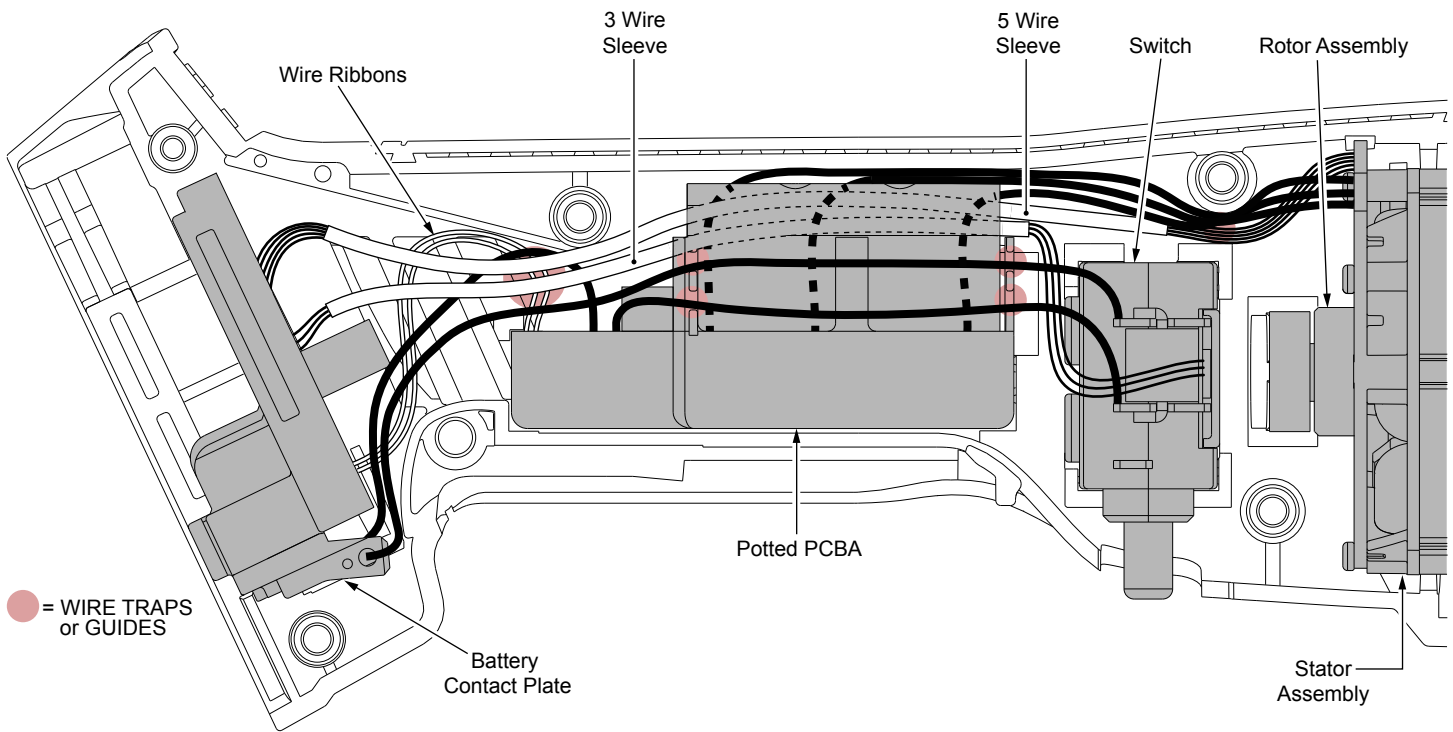


★ = Part number change from previous service parts list.

FIG.	PART NO.	DESCRIPTION OF PART	NO. REQ.
1	05-59-0015	5/8"-11 Fixtec Nut	1
2	43-34-0935	Flange Disc	1
★ 3	43-54-1220	5" Type 27 Guard (Standard Equip., Shown)	1
★ 3	43-54-1200	4.5" Type 27 Guard (Optional, Not Shown)	1
★ 3	43-54-1230	5" Type 1 Guard (Optional, Not Shown)	1
★ 3	43-54-1210	4.5" Type 1 Guard (Optional, Not Shown)	1
4	05-78-5316	M4 x 14mm Pan Hd. Tapt. T-20 Screw	4
5	05-90-0225	Spring Washer	6
★ 6	14-73-0490	5/8"-11 Spindle Hub Assembly	1
★ 6b	-----	Steel Pin	1
★ 6c	-----	Spring	1
★ 6d	44-20-0155	Guard Locking Tang	1
★ 6e	05-81-0020	M3 x 5mm Pan Hd. ST T-8 Screw	1
7	34-40-0180	O-Ring	1
8	14-30-0161	Gearcase Assembly	1
8g	02-04-0620	Ball Bearing	1
★ 9	05-88-1300	M4 x 28mm Pan Hd. ST T-20 Screw	4
10	05-55-0620	M5 Hex Nut	1
★ 11	-----	Pinion Gear	1
12	44-86-0195	Bearing Retaining Plate Assembly	1
12a	44-66-0450	Bearing Retainer	1
12b	05-78-0105	M4 x 10mm Pan Hd. Tapt. T-20 Screw	2

FIG.	PART NO.	DESCRIPTION OF PART	NO. REQ.
13	42-14-0040	Baffle Assembly	1
13a	-----	Fan Baffle	1
13b	-----	Fan Baffle Foot	1
14	45-88-0406	Washer	1
15	16-07-2690	Rotor Assembly	1
15a	-----	Rotor	1
15b	02-04-0033	Ball Bearing	1
18	31-44-1415	Housing Kit	1
18a	06-82-7236	4-20 x 5/8" Pan Hd. Plastite T-10 Screw	1
18b	05-88-1200	M4 x 16mm Pan Hd. Plastite T-20 Screw	4
18c	-----	Housing Cover - Right Housing Halve	1
18d	-----	Housing Support - Left Housing Halve	1
19	14-20-2783	Electronics Assembly Consisting of: Stator, Switch, PCBA and Battery Terminal Connector Block	1
21	31-15-0275	Dust Cover	1
22	43-84-0205	Logo Plate	1
23	14-78-0530	Paddle Trigger Assembly	1
23a	-----	Lock-Off Lever	1
23b	-----	Lock-Off Spring	1
23c	-----	Lock-Off Pin	1
23d	-----	Paddle Trigger	1
25	42-62-0125	Side Handle Assembly	1
27	12-20-2685	Service Nameplate (Not Shown)	1
54	42-55-2683	Blow Molded Carrying Case	1
★ 65	14-46-0241	Spring/Pin Kit	1

WIRE ROUTING AND TRAPPING for the ELECTRONICS KIT in the HANDLE SUPPORT (Left Handle Halve)



AS AN AID TO REASSEMBLY, TAKE NOTICE OF WIRE ROUTING AND POSITION IN WIRE GUIDES AND TRAPS WHILE DISMANTLING TOOL.

BE SURE THAT ALL COMPONENTS OF THE ELECTRONICS KIT ARE SEATED FIRMLY AND SQUARELY IN THE HANDLE RECESSES.

AVOID PINCHED WIRES, BE SURE THAT ALL WIRES AND SLEEVES ARE PRESSED COMPLETELY DOWN IN WIRE GUIDES AND TRAPS.

PRIOR TO INSTALLING THE HANDLE COVER ONTO THE HANDLE SUPPORT, BE SURE THAT THERE ARE NO INTERFERENCES.

SCREW TORQUE SPECIFICATIONS				
FIG.	PART NO.	WHERE USED	SEAT TORQUE	
			(KG/CM)	(IN/LBS)
4	05-88-1210	Spindle Hub Assembly	20-26	17-22
9	05-88-1300	Gear Case	13-19	11-16
10	05-55-0620	Pinion Gear	100	86
18a	06-82-7236	Housing Kit	13-19	11-16
18b	05-88-1200	Housing Kit	6-12	5-10