



SERVICE PARTS LIST

BULLETIN NO.
54-38-7012

SPECIFY CATALOG NO. AND SERIAL NO. WHEN ORDERING PARTS		REVISED BULLETIN 54-38-7011	DATE Jan. 2017
M18 FUEL™ Angle Grinder with Paddle Switch & Lock-Off			
CATALOG NO. 2780-20	STARTING SERIAL NO.	F33C	
		WIRING INSTRUCTION SEE PAGE 2	

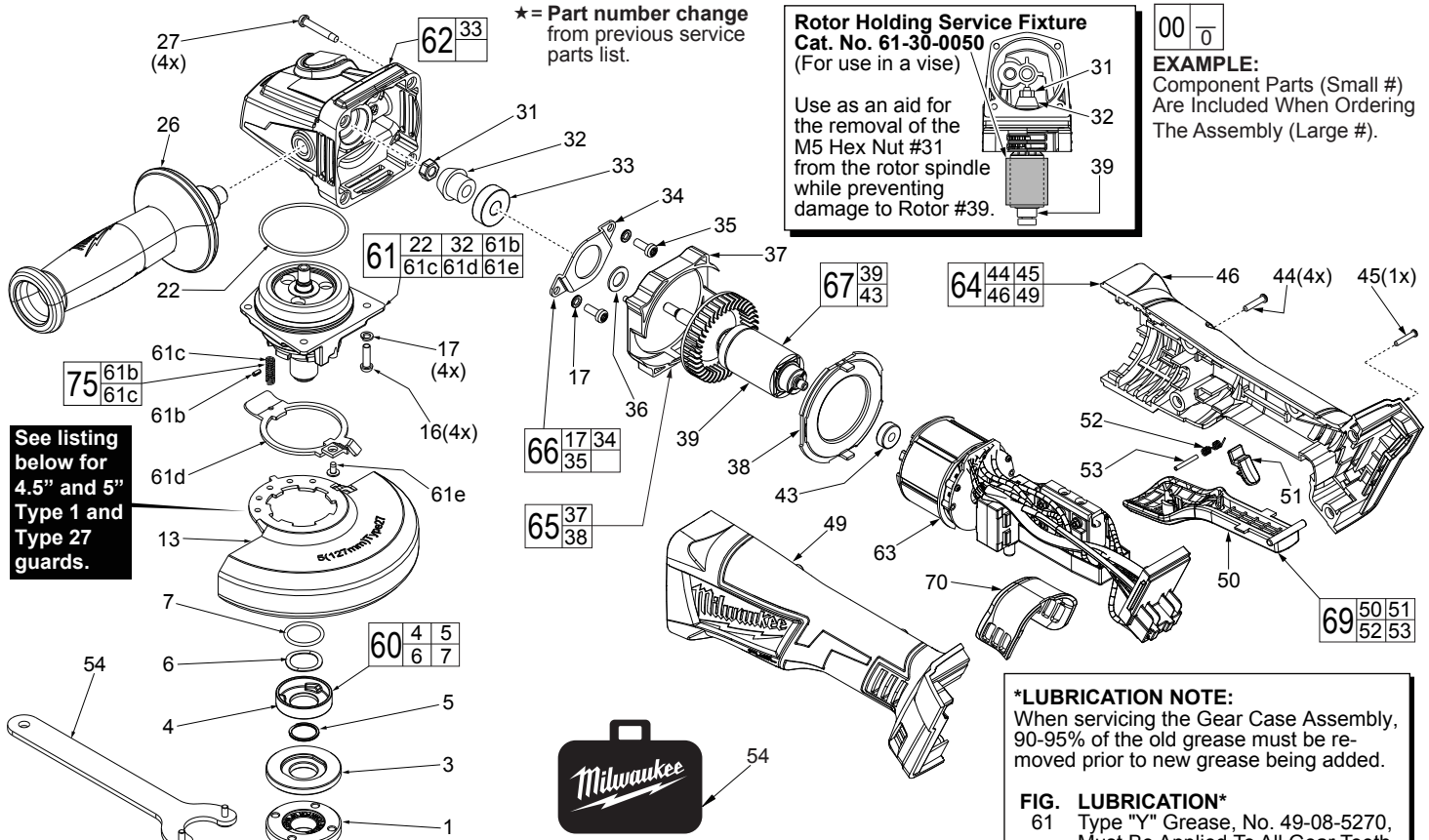
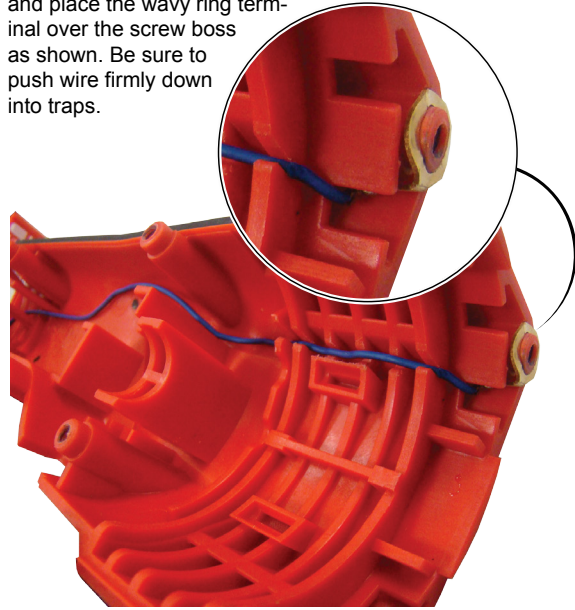


FIG.	PART NO.	DESCRIPTION OF PART	NO. REQ.	FIG.	PART NO.	DESCRIPTION OF PART	NO. REQ.
1	44-40-0035	Flange Nut	1	52	-----	Lock-Off Spring	1
3	43-34-0935	Flange Disc	1	53	-----	Lock-Off Pin	1
4	-----	Flange with Ramps	1	★ 54	49-96-7215	Spanner Wrench	1
5	-----	Retaining Ring	1	55	12-20-2685	Service Nameplate (Not Shown)	1
6	-----	Wave Spring	1	56	42-55-2684	Carrying Case	1
7	-----	O-Ring	1	60	14-46-6105	Flange with Ramps Assembly	1
★ 13	43-54-1220	5" Type 27 Guard (Standard Equip., Shown)	1	★ 61	14-73-0485	5/8-11 Spindle Hub Assembly	1
★ 13	43-54-1230	5" Type 1 Guard (Standard Equip., Not Shown)	1	★ 61b	-----	Steel Pin	1
★ 13	43-54-1200	4.5" Type 27 Guard (Optional, Not Shown)	1	★ 61c	-----	Spring	1
★ 13	43-54-1210	4.5" Type 1 Guard (Optional, Not Shown)	1	★ 61d	44-20-0155	Guard Locking Tang	1
16	05-78-5316	M4 x 14mm Pan Hd. Tapt. T-20 Screw	4	★ 61e	05-81-0020	M3 x 5mm Pan Hd. ST T-8 Screw	1
17	05-90-0225	Spring Washer	6	★ 62	14-30-1167	Gearcase Assembly	1
22	34-40-0180	O-Ring	1	63	14-20-2690	Electronics Kit	1
26	42-62-0125	Side Handle	1	64	31-44-0895	Housing Kit	1
★ 27	05-88-1300	M4 x 28mm Pan Hd. ST T-20 Screw	4	65	42-14-0040	Baffle Assembly	1
31	05-55-0620	M5 Hex Nut	1	66	44-86-0195	Bearing Retaining Plate Assembly	1
★ 32	-----	Pinion	1	67	16-07-2690	Rotor Assembly	1
33	02-04-0620	Ball Bearing	1	69	14-78-0575	Paddle Trigger Assembly	1
34	44-66-0450	Bearing Retainer	1	70	31-15-0275	Dust Cover	1
35	05-78-0105	M4 x 10mm Pan Hd. Tapt. T-20 Screw	2	★ 75	14-46-0241	Spring/Pin Kit	1
36	45-88-0406	Washer	1				
37	-----	Fan Baffle	1				
38	-----	Fan Baffle Foot	1				
39	-----	Rotor	1				
43	02-04-0033	Ball Bearing	1				
44	05-88-1200	M4 x 16mm Pan Hd. Plastite T-20 Screw	4				
45	06-82-7236	4-20 x 5/8" Pan Hd. Plastite T-10 Screw	1				
46	-----	Handle Cover - Right Side	1				
49	-----	Handle Support - Left Side	1				
50	-----	Paddle Trigger	1				
51	-----	Lock-Off Lever	1				

Route the voltage protection ground wire from the PCBA, through the traps in the left housing halve and place the wavy ring terminal over the screw boss as shown. Be sure to push wire firmly down into traps.



WIRE ROUTING AND TRAPPING for the ELECTRONICS KIT in the HANDLE SUPPORT (Left Handle Halve)

