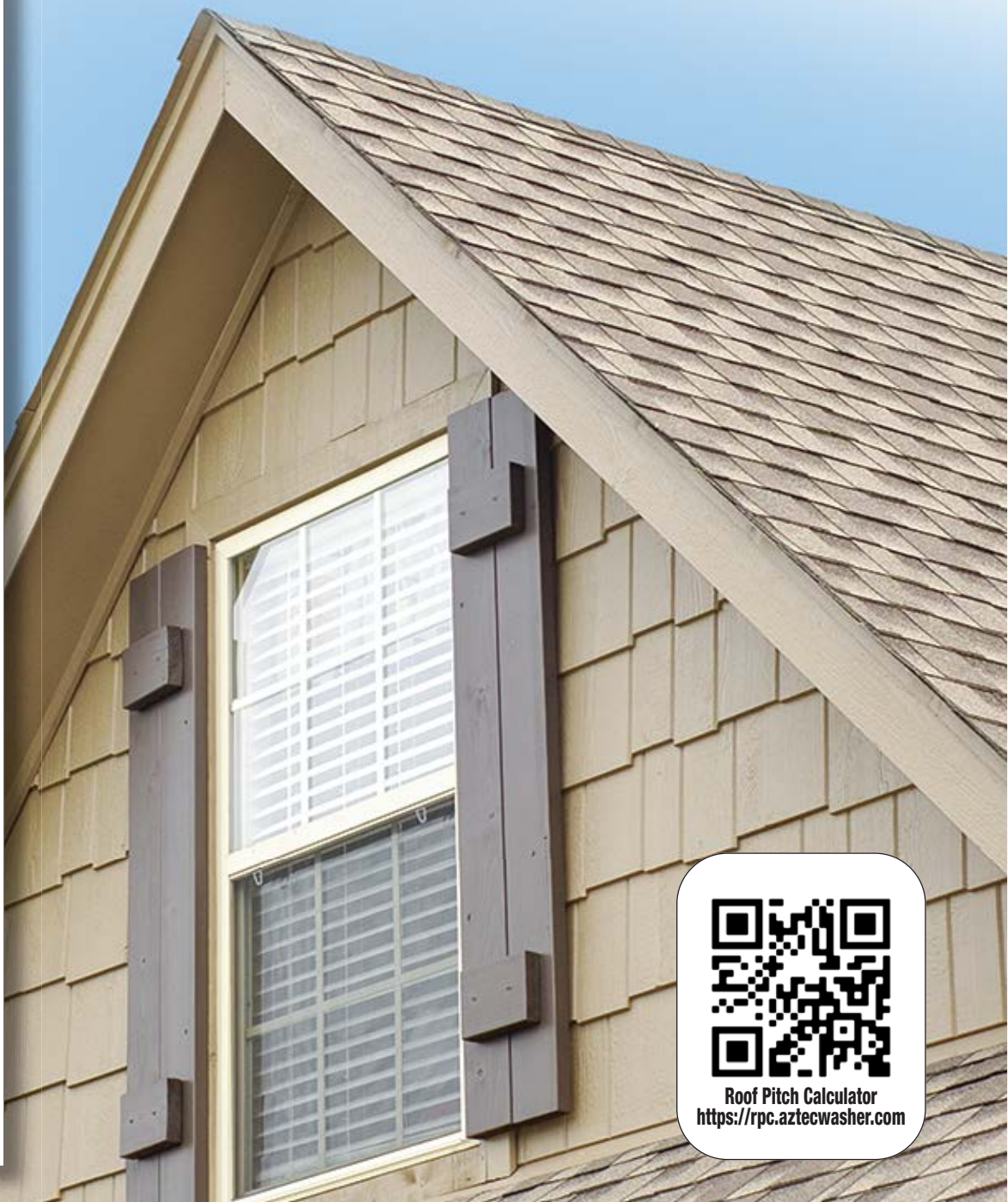


Master Flash®

Residential Applications

2/2022

Metal • Shake • Shingle • Tile Roofing



Roof Pitch Calculator
<https://rpc.aztecwasher.com>



Aztec Washer Company: 13821 Danielson St., Poway, CA 92064 1-800 WASHER 5 (927-4375)
Ph: 858 513-4350 • Fax: 858 513-4305 • info@aztecwasher.com • www.aztecwasher.com

Electrical Mast Connection Master Flash®

Specifically designed for the **Residential Roofing Industry.**

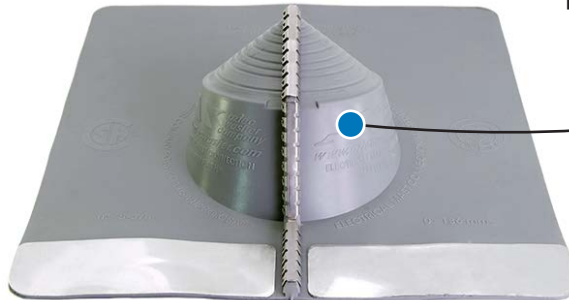
Two Compounds: EPDM / High Temp Red & Gray Silicone



Advanced Ozone Resistance tested to...		EPDM 70 hour @ 500 pphm	HIGH TEMP RED OR GREY SILICONE 70 hour @ 500 pphm
High Temperature Resistance Tested to	Intermittent	+135°C (+275°F)	+260°C (+500°F)
	Continuous	+100°C (+212°F)	+225°C (+437°F)
Low Temperature Resistance tested to...		- 55°C (-67°F)	- 74°C (-101°F)
Compression Set Maximum...		25%	50%

*Complete specification data and testing methods are available upon request.

The built in 20° pitch allows adaptability to almost any roof pitch including 45° Stainless steel grippers included



No hassle stainless steel gripper to secure retrofit application

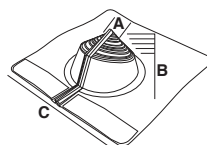


Available in Red or Gray High Temp Silicone



Name	Part #	Compound	Pipe Range	Base
Electrical Mast Connection	EMC101BS	Black EPDM	Closed - 5-3/8" (0 - 136mm)	15" (381mm)
	EMC102RS	Red Silicone		
	EMC102GX	Gray Silicone		

Aztec Washer Reference Part #: EMC101BS (Black)



Electrical Mast Connection Flashing Details

A-Top Opening	Closed
B-Pull to suit pipe size	0-5-3/8" (0-136mm)
C-Base	15" (381mm)



Modification Made Simple
Easy to see pipe diameters make for painless on-site installation.

Solar Multi-Port - CT (Clay Tile) Master Flash®

No Fasteners Required! Just WeatherMaster™ Sealant



One Compound:
Black and Terra Cotta EPDM Rubber



SMP-CT Pipe Range: Closed - 1-15/16" (0 - 49mm) • Small Port Range: 1/64"-3/8" (1-9mm) • Medium Port Range: 3/16"- 15/16" (4-23mm)
Top opening diameter: Closed • Overall height: 2-1/2" (63mm) • Base: 4-1/2" (114mm)

Aztec Washer Reference Part #:SMP-MR101BA (Black)

Solar Flash Master Flash®

Specifically designed for solar applications

Two Compounds: EPDM / High Temp Red or Gray Silicone



The pitch canal allows for maximum flexibility, easily accommodating up to a 60° degree pitch without affecting performance.



#1 Pipe Range: 3/4"-1-1/8" (19 - 28mm)
Top opening: 3/4" (19mm) • Overall height: 2-1/4" (57mm) • Base: 4" (101mm)

Aztec Washer Reference Part #:SF101BA (Black)

Solar Multi-Port - AL (Aluminum) or LD (Lead) Master Flash®

"Environmentally safe" lead free aluminum base • Powder coated Safe-Lead metal base."

Two Compounds: EPDM / High Temp Red Silicone



Two Compounds:
EPDM / High Temp Red Silicone



Aztec Washer's products such as specialty sealing hardware and standard flashings comply with California's Proposition 65 also known as the Safe Drinking Water and Toxic Enforcement Act of 1986.

SMP-AL / LD Pipe Range: Center port: Closed - 1-15/16" (0 - 49mm) Pipe • small ports: 1/64"- 3/8" (1-9mm) medium ports: 3/16"- 15/16" (4-23mm)
Top opening diameter: Closed • Overall height: 2-1/2" (63mm) • Base: AL 17-3/4" x 24" (450 x 600mm) • LD 16" X 19-1/4" (410 X 490mm)

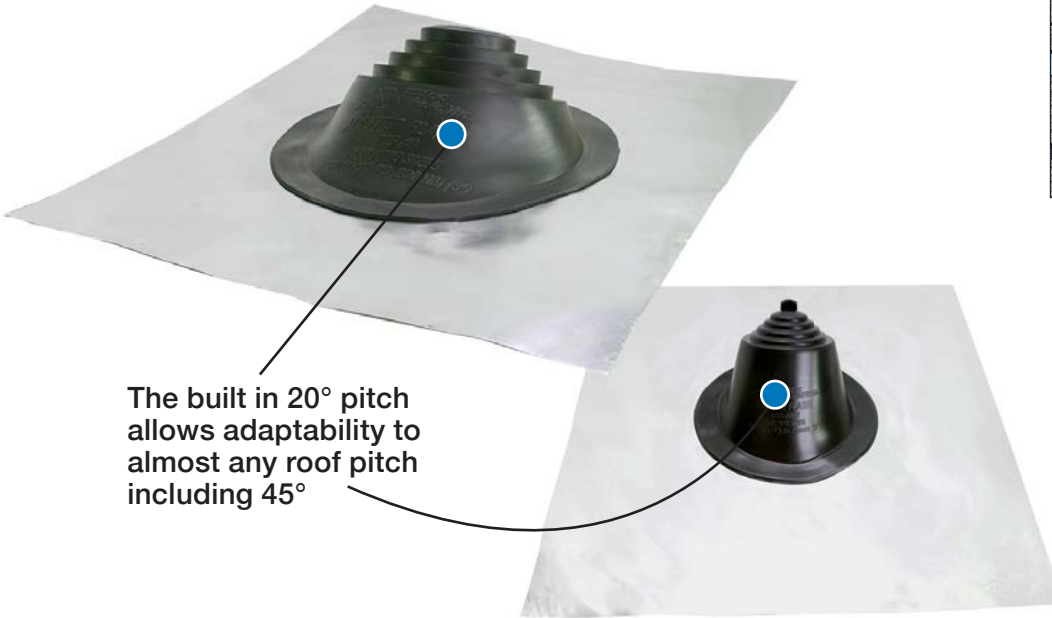
Aztec Washer Reference Part #:SMP-RS101BA (Aluminum) (Black) • Aztec Washer Reference Part #:SMP-RL101BA (Lead) (Black)

RESIDENTIAL Master Flash®

“Environmentally Safe” Aluminum Base.

A “C20” ASTM additional requirement was added to assure conformance to the most stringent ozone/weathering specifications available. This addition allows the rubber a 20 year life.

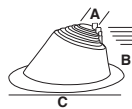
The addition of fire retarding agents milled directly into the rubber compound creates a self extinguishing feature which enables it to be used with type “B” vents. Listed with IAPMO certification No.3121



The built in 20° pitch allows adaptability to almost any roof pitch including 45°



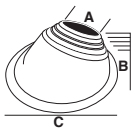
The pull tab design and easy smooth tear grooving is intended to eliminate razor knives and allow for a circular hole



Mini Residential Flashing Details

A-Top Opening	Closed
B-Pull to suit pipe size	Closed-3-1/4" (0-82mm)
C-Base	16"x19-1/4" (410x490mm)

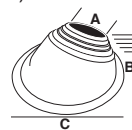
* Part # RS051BA (Black)



#1 Residential Flashing Details

A-Top Opening	2-3/4" (69mm)
B-Pull to suit pipe size	2-3/4" - 8" (69-203mm)
C-Base	20" x 24" (508x609mm)

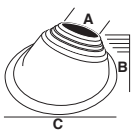
* Part # RS101BA (Black)



#2 Residential Flashing Details

A-Top Opening	7" (177mm)
B-Pull to suit pipe size	7" - 11-1/2" (177-292mm)
C-Base	26" x 30" (660x762mm)

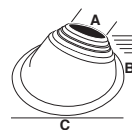
* Part # RS201BA (Black)



#1.5 Residential Flashing Details

A-Top Opening	6" (150mm)
B-Pull to suit pipe size	6" - 8" (150-200mm)
C-Base	24" x 27-3/4" (609x702mm)

* Part # RS151BA (Black) **ALL NEW**



#3 Residential Flashing Details

A-Top Opening	11" (279mm)
B-Pull to suit pipe size	11" - 18-1/2" (279-469mm)
C-Base	35" x 35" (889x889mm)

* Part # RS301BA (Black)

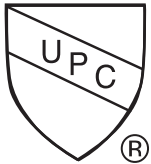
Mini Pipe Range: Closed- 3-1/4" (0 - 82mm) Top opening diameter: Closed • Pull to suit pipe size: Closed - 3-1/4" (0-82mm) • Base: 16"X19-1/4" (406X488mm)
#1 Pipe Range: 2-3/4" - 8"(69 - 203mm) Top opening diameter: 2-3/4" (69mm) • Pull to suit pipe size: 2-3/4" -8" (69- 203mm) • Base: 20"X24" (410X609mm)
#1.5 Pipe Range: 6" - 8"(150 - 200mm) ALL NEW Top opening diameter: 6" (150mm) • Pull to suit pipe size: 6" -8" (150- 200mm) • Base: 24"X27-3/4" (609X704mm)
#2 Pipe Range: 7" - 11-1/2" (177 - 292mm) Top opening diameter: 7" (177mm) • Pull to suit pipe size: 7" - 11-1/2" (177- 292mm) • Base: 26"X30" (660X762mm)
#3 Pipe Range: 11" - 18-1/2" (279 - 469mm) Top opening diameter: 11" (27mm 9) • Pull to suit pipe size: 11" - 18-1/2" (279 - 469mm) • Base: 35"X35" (889X889mm)

Two Compounds: EPDM / High Temp Red & Gray Silicone

Advanced Ozone Resistance tested to...		EPDM 70 hour @ 500 pphm	HIGH TEMP RED OR GREY SILICONE 70 hour @ 500 pphm
High Temperature Resistance Tested to	Intermittent Continuous	+135°C (+275°F) +100°C (+212°F)	+260°C (+500°F) +225°C (+437°F)
Low Temperature Resistance tested to...		- 55°C (-67°F)	- 74°C (-101°F)
Compression Set Maximum...		25%	50%



*Complete specification data and testing methods are available upon request.



“UPC approved, why buy anything else?”

Commercial • Residential • Industrial • UPC • Buy American Act Listings

APPLICATIONS



Accommodate flues & vents from closed top diameter through 18-1/2” diameter

A “C20” ASTM additional requirement was added to assure conformance to the most stringent ozone/weathering specifications available. This addition allows the rubber a 20 year life.

5 Easy Steps

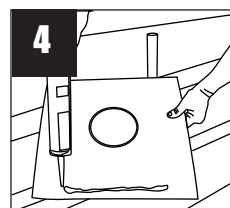
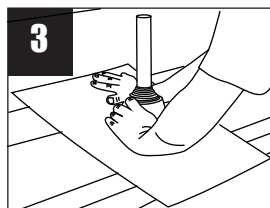
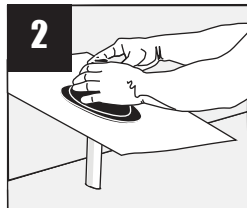
Measure & Trim

SLIDE

Form

Seal

Complete



The Low-Profile Master Flash®

Specifically designed for Sidewall or Low Profile Applications



Available In:

3 Sizes • Standard Applications • Retrofit Application



Applications:

- Drywall
- Stucco Walls
- Roof Penetrations
- Sidewall Applications
- Corrugated Metal Sides



Standard Pipe Ranges from Closed to 12-1/2" (0-317mm) • Overall height: 5/16" (7mm) • Base Ranges from 6-1/4" to 16-1/2" (158-419mm)

Retrofit Pipe Ranges from Closed to 12-1/2" (0-317mm) • Overall height: 5/16" (7mm) • Base Ranges from 6-1/4" to 16-1/2" (158-419mm)

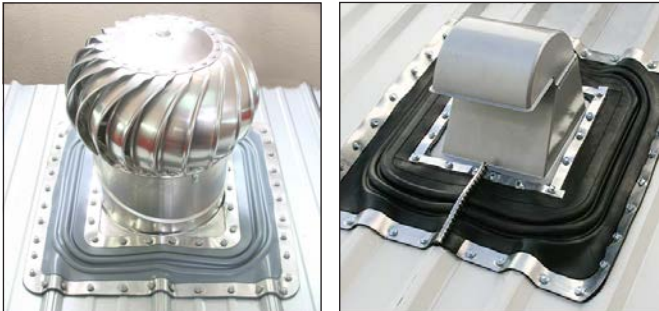
Aztec Washer Reference Part #:LP101BA (#1) (Standard Black) • Aztec Washer Reference Part #:LP101BA-G (#1) (Retrofit Black)

Roof Vent Sealing Adapter Master Flash®

Specifically designed for Metal Roofing Industry



Available In: Standard Applications • Retrofit Applications



US Patent # 10,161,135,B2



Compound EPDM
Black, Light & Dark Gray

Stainless Steel Gripper & Termination Strips for
Retrofit Applications Included

Open Top Opening: 11-3/4" X 11-3/4" (298 X 298mm) • Overall height: 1/4" (6mm) • Base: 24" (609mm)

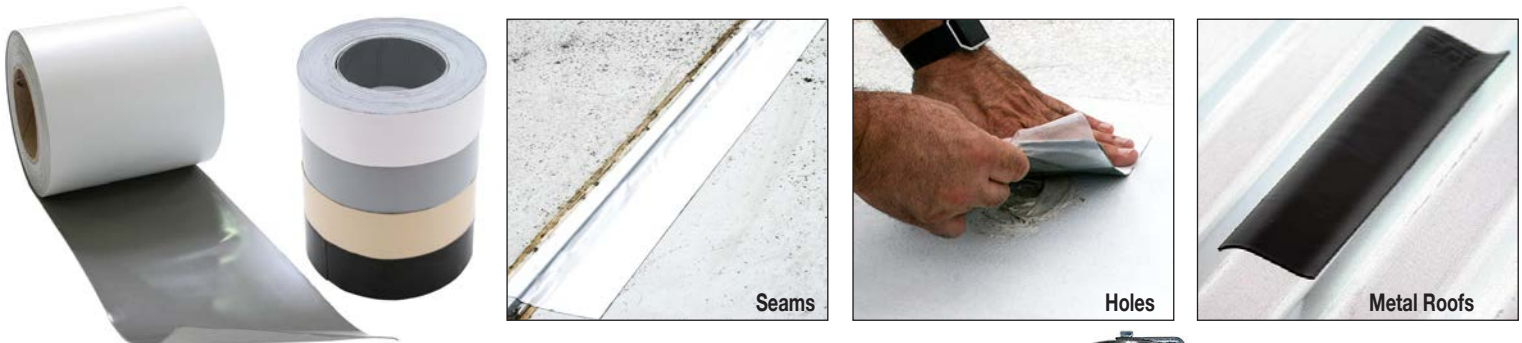
Retrofit Closed Top: Square or Rectangles: Closed-12" (0- 355mm) • Overall height: 1/4" (6mm) Base: 24" (609mm)

Aztec Washer Reference Part #:RVA101BA (Standard Black) • Aztec Washer Reference Part #:RVA101BA-MF (Retrofit Black)

Master Flash® Metal Roof Sealing Tape

Sealing Joints, Seams, Holes and More!

Use on: EPDM, TPO, Hypalon, Aged PVC, Modifies, and All Metals.



2", 4", 6", & 9 inch widths 50 foot lengths • Available in Black, Gray, White, and Tan

Aztec Washer Reference Part #:MRT2X50-BA (2 Inch Wide - 50 Foot Long (Black)



MRTR101-ST

*Heavy Duty Steel Roller NOT Included

RES-LEAD Master Flash[®]

Available in Protective Coated Safe Lead Base.

Two Compounds: EPDM / High Temp Red Silicone



Advanced Ozone Resistance tested to...		EPDM 70 hour @ 500 pphm	HIGH TEMP RED OR GREY SILICONE 70 hour @ 500 pphm
High Temperature Resistance Tested to	Intermittent	+135°C (+275°F)	+260°C (+500°F)
	Continuous	+100°C (+212°F)	+225°C (+437°F)
Low Temperature Resistance tested to...		- 55°C (-67°F)	- 74°C (-101°F)
Compression Set Maximum...		25%	50%

*Complete specification data and testing methods are available upon request.

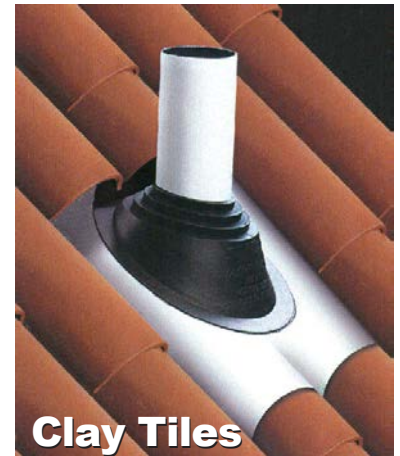
Weather Protection

Made of EPDM or Red Silicone, these flashings are compounded specifically for maximum resistance to weathering due to ozone and ultraviolet light.

A "C20" ASTM

additional requirement was added to assure conformance to the most stringent ozone/weathering specifications available. This addition allows the rubber a 20 year life. Self extinguishing feature enables use with type "B" vents

Self extinguishing feature enables use with type "B" vents



Name	Part #	Compound	Pipe Range	Base
Mini	RL051BA	Black EPDM	Closed-3-1/4" (0-82mm)	16"X19-1/4" (410X490mm)
	RL051GA	Gray EPDM		
	RL052RA	Red Silicone		
#1	RL101BA	Black EPDM	2-3/4"-8" (69-203mm)	20"X24" (508X609mm)
	RL101GA	Gray EPDM		
	RL102RA	Red Silicone		
#2	RL201BA	Black EPDM	8"- 11-1/2" (203 - 292mm)	26"X30" (660X762mm)
	RL202RA	Red Silicone		
#3	RL301BA	Black EPDM	11"- 18" (279 - 457mm)	35"X35" (889X889mm)
	RL301GA	Gray EPDM		
	RL302RA	Red Silicone		

Aztec Washer Reference Part #:RL051BA (Mini) (Black)

Aztec Washer's products such as specialty sealing hardware and standard flashings comply with California's Proposition 65 also known as the Safe Drinking Water and Toxic Enforcement Act of 1986.

Aztec Washer Company

Quality and Service **Worldwide**

Since 1968



INTERNATIONAL HEADQUARTERS

13821 Danielson Street, Poway, CA 92064

1-800-WASHER 5 (927-4375) • Ph: 1-858-513-4350 • Fax: 1-858-513-4305 • e-mail: sales@aztecwasher.com

www.aztecwasher.com



AZTEC (UK) LTD.

Unit 55, Enterprise Trading Estate Hurst Lane, Pedmore Brierley Hill,
West Midlands DY5 1TX, United Kingdom

Tel: +44 1384 573444 • Fax: +44 1384 572029 • e-mail: sales@aztec-midlands.co.uk

www.aztecmaster-flash.co.uk



AZTEC INTERNATIONAL S.A.,

ul. Sowia 13C, 62-080 Tarnowo Podgórne, Poland

Tel: +48 61 867 60 84 • Fax: +48 61 867 34 44 • e-mail: sales@aztec-international.eu

www.aztec-international.eu • www.master-flash.eu



AZTEC MEXICO

Serv.y Maqs.Intls.SAdeCV.

Ph:+52 665 6542571 • Fax: +52 665 6550796 e-mail: soto@smimx.net

www.aztecwasher.mx



AZTEC AUSTRALASIA

15 Mickle Street Dandenong South Victoria, 3175

Tel: +03 9768 2394 • Fax: +03 9768 2580 • e-mail: info@aztecau.com.au

www.aztecau.com.au

To see our complete product line go to: www.aztecwasher.com



Installation Videos:

www.aztecwasher.com/installationvideos/



Master Flash®, Universal Master Flash®, Multi-Flash®, Master Flash® and Master Seal® are trademarks of Aztec Washer Company, Inc.
For Technical Support Call: 1-800-WASHER 5 (927-4375) (Outside California Only), California Callers: (858) 513-4350

Master Flash® and Master Seal® are registered trademarks of Aztec Washer Company, Inc., 2/2022 Aztec Washer Company