

Multi-Flash Master Flash®

Retrofit Applications

For the Metal Roofing Industry
“Two Flashings In One”
One Design • Multiple Functions



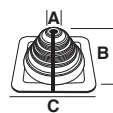
Advanced Ozone Resistance tested to...		EPDM 70 hour @ 500 pphm	HIGH TEMP GRAY SILICONE 70 hour @ 500 pphm
High Temperature Resistance Tested to	Intermittent	+135°C (+275°F)	+260°C (+500°F)
	Continuous	+100°C (+212°F)	+225°C (+437°F)
Low Temperature Resistance tested to...		- 55°C (-67°F)	- 74°C (-101°F)
Compression Set Maximum...		25%	50%

*Complete specification data and testing methods are available upon request.

Name	Part #	Compound	Pipe Range	Base
#2	MF201BA-G	Black EPDM	Standard 5/8" - 4" (15 - 101mm)	6" (152mm)
	MF202GX-G	Gray Silicone	Retrofit 1-1/8" - 3-7/8" (28 - 98mm)	
#3	MF301BA-G	Black EPDM	Standard Closed - 5-3/4" (0-146mm) Retrofit 2" - 5" (50 - 127mm)	8" (203mm)
	MF302GX-G	Gray Silicone		
#4	MF401BA-G	Black EPDM	Standard 2-3/4" - 7" (69 - 177mm) Retrofit 3" - 6-1/2" (76 - 165mm)	10" (254mm)
	MF402GX-G	Gray Silicone		
#5	MF501BA-G	Black EPDM	Standard 4" - 8-1/4" (101 - 203mm) Retrofit 3-3/4" - 7" (95 - 177mm)	11" (279mm)
	MF502GX-G	Gray Silicone		
#6	MF601BA-G	Black EPDM	Standard 4-3/4" - 10" (121 - 254mm) Retrofit 4-1/2" - 8-1/2" (114 - 215mm)	12" (304mm)
	MF602GX-G	Gray Silicone		
#7	MF701BA-G	Black EPDM	Standard 6" - 11" (152 - 279mm) Retrofit 5-1/4" - 10" (133 - 254mm)	14" (355mm)
	MF702GX-G	Gray Silicone		
#8	MF801BA-G	Black EPDM	Standard 6-3/4" - 12" (171 - 304mm) Retrofit 6-1/2" - 12-3/4" (165 - 323mm)	17" (431mm)
	MF802GX-G	Gray Silicone		
#9	MF901BA-G	Black EPDM	Standard 9-1/2" - 20-1/2" (241 - 520mm) Retrofit 9-1/4" - 20-1/2" (234 - 520mm)	25" (635mm)
	MF902GX-G	Gray Silicone		
Maxi	MF951BA-G	Black EPDM	Standard 12" - 28-1/2" (304 - 723mm) Retrofit 11" - 28" (279 - 711mm)	34" (863mm)
	MF952GX-G	Gray Silicone		

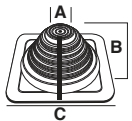


20
YEAR
WARRANTY



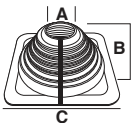
#2 Multi-Flash Flashing Details

A-Top Opening	5/8" (15mm)
B-Overall Height	2-3/4" (70mm)
C-Base	6" (152mm)



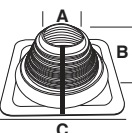
#3 Multi-Flash Flashing Details

A-Top Opening	Closed
B-Overall Height	3" (76mm)
C-Base	8" (203mm)



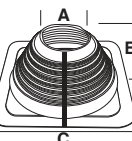
#4 Multi-Flash Flashing Details

A-Top Opening	2-3/4" (69mm)
B-Overall Height	4-3/4" (120mm)
C-Base	10" (254mm)



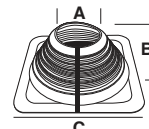
#5 Multi-Flash Flashing Details

A-Top Opening	4" (101mm)
B-Overall Height	4-1/2" (114mm)
C-Base	11" (279mm)



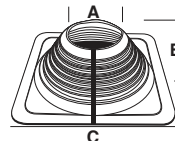
#6 Multi-Flash Flashing Details

A-Top Opening	4-3/4" (120mm)
B-Overall Height	4-1/2" (114mm)
C-Base	12" (304mm)



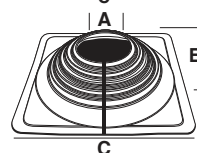
#7 Multi-Flash Flashing Details

A-Top Opening	6" (152mm)
B-Overall Height	5-1/2" (140mm)
C-Base	14" (355mm)



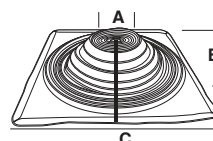
#8 Multi-Flash Flashing Details

A-Top Opening	6-3/4" (171mm)
B-Overall Height	5-3/4" (146mm)
C-Base	17" (431mm)



#9 Multi-Flash Flashing Details

A-Top Opening	9-1/2" (241mm)
B-Overall Height	5-3/4" (146mm)
C-Base	25" (635mm)



Maxi Multi-Flash Flashing Details

A-Top Opening	12" (304mm)
B-Overall Height	7-1/2" (190mm)
C-Base	34" (863mm)

Multi-Flash Master Flash®

Retrofit Applications

Multi-Flash Size and Trimming

Multi-Flash Pipe Range	#1/Multi-Port	#2	#3	#4	#5	#6	#7	#8	#9	Maxi
Closed Top	Closed Top	Closed Top	Closed Top							
1 2" (50mm)	1 1-1/4" (31mm)	1 1-1/8" (28mm)	1 2" (50mm)	1 3" (76mm)	1 3-3/4" (95mm)	1 4-1/2" (114mm)	1 5-1/4" (138mm)	1 6-1/2" (165mm)	1 9-1/4" (254mm)	1 11" (279mm)
2 2-1/2" (63mm)	2 1-5/8" (41mm)	2 2-1/4" (57mm)	2 2-1/2" (63mm)	2 3-3/4" (95mm)	2 4-1/2" (114mm)	2 5-1/2" (139mm)	2 7" (177mm)	2 8" (203mm)	2 12-1/2" (317mm)	2 13-1/4" (336mm)
3 3-1/4" (82mm)	3 2-1/4" (57mm)	3 2-1/2" (63mm)	3 3-1/4" (82mm)	3 4-1/2" (116mm)	3 5" (127mm)	3 6" (152mm)	3 7-3/4" (196mm)	3 8-3/4" (222mm)	3 14-1/2" (368mm)	3 14-1/2" (368mm)
4 4" (101mm)	4 2-1/2" (63mm)	4 3" (76mm)	4 4" (101mm)	4 5-1/4" (133mm)	4 5-1/2" (139mm)	4 6-3/4" (171mm)	4 8-1/4" (209mm)	4 9-3/4" (247mm)	4 16-1/2" (419mm)	4 16-1/2" (419mm)
5 4-1/2" (114mm)	5 3-1/2" (88mm)	5 3-7/8" (98mm)	5 4-1/2" (114mm)	5 5-7/8" (148mm)	5 6" (152mm)	5 7-1/4" (184mm)	5 9-1/4" (234mm)	5 10-3/4" (273mm)	5 18-1/2" (470mm)	5 19-1/2" (495mm)
6 5" (127mm)	6 3-7/8" (98mm)	6 5" (127mm)	6 5" (127mm)	6 6-1/2" (165mm)	6 6-1/2" (165mm)	6 8" (203mm)	6 10" (254mm)	6 11-3/4" (296mm)	6 20-1/2" (521mm)	6 22" (556mm)
				7 7" (177mm)	7 8-1/2" (215mm)	7 8-1/2" (215mm)	7 12-3/4" (323mm)	7 12-3/4" (323mm)	7 23-1/4" (590mm)	7 23-1/4" (590mm)
									8 25" (635mm)	8 25" (635mm)
									9 28" (711mm)	9 28" (711mm)

****Base Dimension: #1/Multi-Port 4-1/2" (114mm) | #2 6" (152mm) | #3 8" (203mm) | #4 10" (254mm) | #5 11" (279mm) | #6 12" (304mm) | #7 14" (355mm) | #8 17" (431mm) | #9 25" (635mm) | Maxi 34" (863mm)**

* Note This is the #3 Multi-Flash For Reference

Retrofit Applications

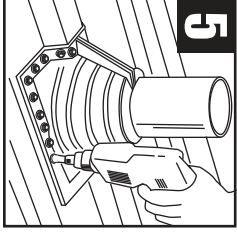
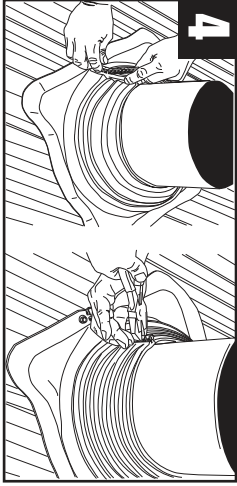
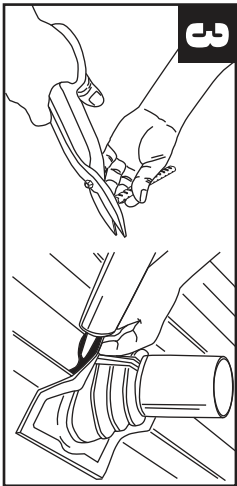
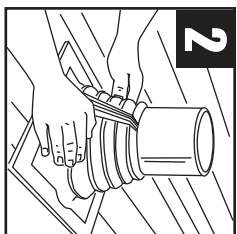
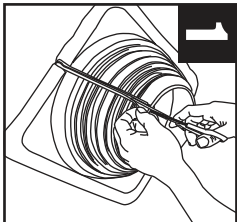
5 Easy Steps Installation Materials: Multi-Flash Master Flash® | Gripper | Fasteners | Washers | Snips/Scissors Measuring Tape | Marker/Pencil | Sealant

Measure & Trim
Wraparound
& Form

Cut gripper to fit.
Apply Sealant

Slide gripper.
Crimp gripper with pliers.

Complete



Roof Pitch Calculator
<https://rpc.aztecwasher.com>

* Find pipe size in table and trim Multi-Flash Master Flash® as shown on outline. • Use one size larger Multi-Flash Master Flash® on steep roofs or deep corrugation.
* Cut the flashing at least 10% less than the pipe Outer Diameter
Note: Properly install the base with Master Seal® Bonded Washers and fasteners. Fasteners should be 1" - 1-1/2" apart around the entire base for a tight secure seal.



Installation Video: <http://www.aztecwasher.com/installationvideos>

Multi-Flash Master Flash® is a product of Aztec Washer Company 4/2020