

<b>Part No.</b>	<b>Reference No.</b>	<b>Quantity</b>	<b>Description</b>
75013544#M4AH6UP2~S	*		AC & HP NOMENCLATURE
75013532#M4AH6UP2~S	*		E-PART BOX ASSEMBLY
75013529#M4AH6UP2~S	*		GENERAL ASSEMBLY
M4AH6UP2_M4AH6UP2_181334 ~P	*		M4AH6UP2 PARTS LIST
75013545#M4AH6UP2~S	*		TXV-ORIFICE CHART

NO GRAPHIC AVAILABLE

75013702

REV  
A

**NO  
GRAPHIC  
AVAILABLE**

NOMENCLATURE

75013544

REV.  
A

AMERISTAR AC CONDENSING & HP HEAT PUMP UNITS

Model Number Example

**M 4 H P 6 0 6 0 B 1 0 0 0 A A**  
**1 2 3 4 5 6 7 8 9 10 11 12 13 14 15**

Digit 1 = Brand Name  
M = Ameristar

Digit 2 = Refrigerant  
2 = R22  
4 = R410A

Digit 3-4 = Unit Type  
AC = Condensing  
HP = Heat Pump

Digit 5 = Efficiency Tier  
3 - 13 SEER  
4 - 14 SEER  
6 = 16 SEER

Digit 6,7,8 = Tonnage  
018 = 1.5 ton  
024 = 2.0 ton  
030 = 2.5 ton  
036 = 3.0 ton  
042 = 3.5 ton  
048 = 4.0 ton  
060 = 5.0 ton

Digit 9 = Major Development Sequence  
Alphabet Letter; "A" through "Z"

Digit 10 = Electric Power Supply Characteristics  
1 = 200-230V/1PH/60Hz or 208-230V/1PH/60Hz

Digit 11,12,13 = Secondary Function  
000 = No Secondary Function

Digit 14,15 = Minor Design Sequence - Design Change  
Alphabet Letter; "A" through "Z"

All orderable Service Parts are identified for this product.

Parts that are not identified, will not be available to order.

This is a typical illustration. The unit in the field may not appear exactly as shown.

Parts List Number :M4AH6UP2#M4AH6UP2

Model Number :M4AC6042B1000AA

Part No.	Reference No.	Quantity	Description
75013544_M4AH6UP2_181338-P	*		AC & HP NOMENCLATURE PARTS LIST

NOMENCLATURE

75013544

REV.  
A

AMERISTAR AC CONDENSING & HP HEAT PUMP UNITS

Model Number Example

**M 4 H P 6 0 6 0 B 1 0 0 0 A A**  
**1 2 3 4 5 6 7 8 9 10 11 12 13 14 15**

Digit 1 = Brand Name  
M = Ameristar

Digit 2 = Refrigerant  
2 = R22  
4 = R410A

Digit 3-4 = Unit Type  
AC = Condensing  
HP = Heat Pump

Digit 5 = Efficiency Tier  
3 - 13 SEER  
4 - 14 SEER  
6 = 16 SEER

Digit 6,7,8 = Tonnage  
018 = 1.5 ton  
024 = 2.0 ton  
030 = 2.5 ton  
036 = 3.0 ton  
042 = 3.5 ton  
048 = 4.0 ton  
060 = 5.0 ton

Digit 9 = Major Development Sequence  
Alphabet Letter; "A" through "Z"

Digit 10 = Electric Power Supply Characteristics  
1 = 200-230V/1PH/60Hz or 208-230V/1PH/60Hz

Digit 11,12,13 = Secondary Function  
000 = No Secondary Function

Digit 14,15 = Minor Design Sequence - Design Change  
Alphabet Letter; "A" through "Z"

All orderable Service Parts are identified for this product.

Parts that are not identified, will not be available to order.

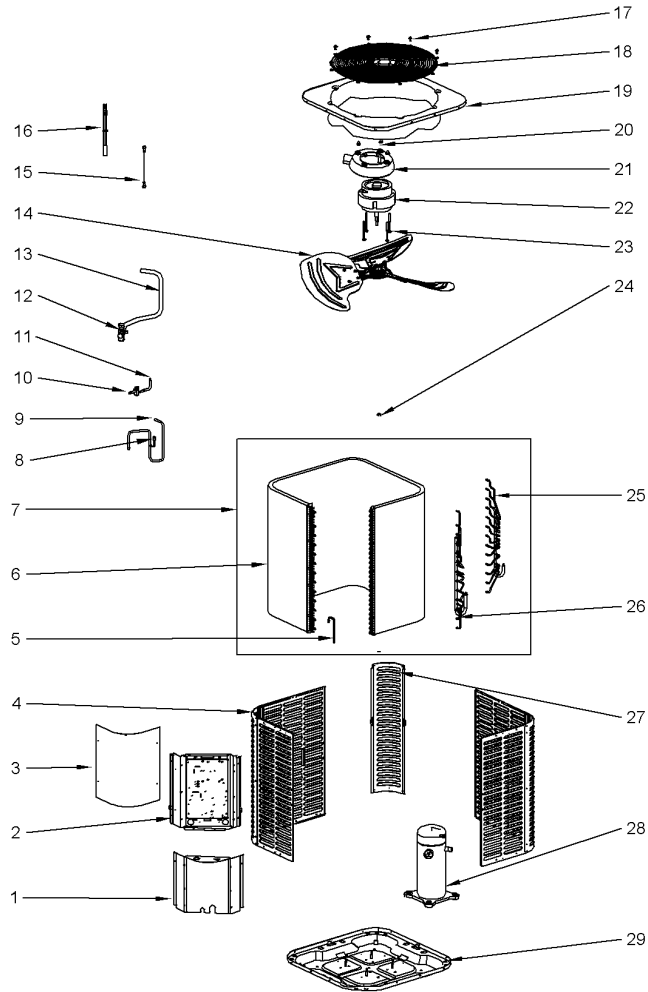
This is a typical illustration. The unit in the field may not appear exactly as shown.

AMERISTAR 16 SEER CONDENSING UNITS

75013529

REV.  
A

GENERAL ASSEMBLY  
3.5 & 4.0 TON



All orderable Service Parts are identified for this product.

Parts that are not identified, will not be available to order.

This is a typical illustration. The unit in the field may not appear exactly as shown.

Parts List Number :M4AH6UP2#M4AH6UP2

Model Number :M4AC6042B1000AA

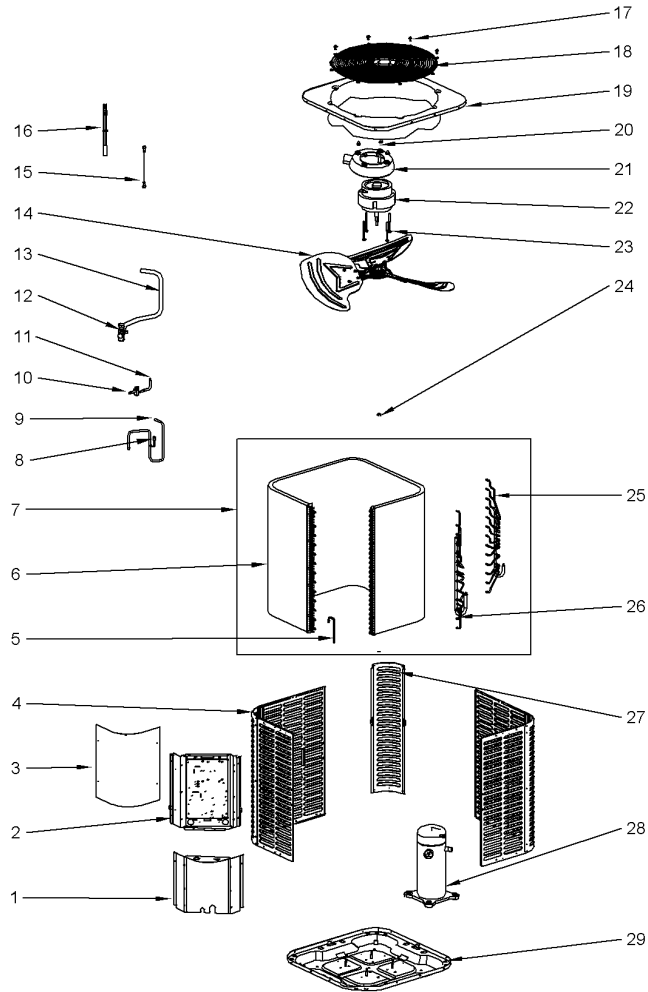
Part No.	Reference No.	Quantity	Description
75013529_M4AH6UP2_211132-P	*		GENERAL ASSEMBLY PARTS LIST

AMERISTAR 16 SEER CONDENSING UNITS

75013529

REV.  
A

GENERAL ASSEMBLY  
3.5 & 4.0 TON



All orderable Service Parts are identified for this product.

Parts that are not identified, will not be available to order.

This is a typical illustration. The unit in the field may not appear exactly as shown.

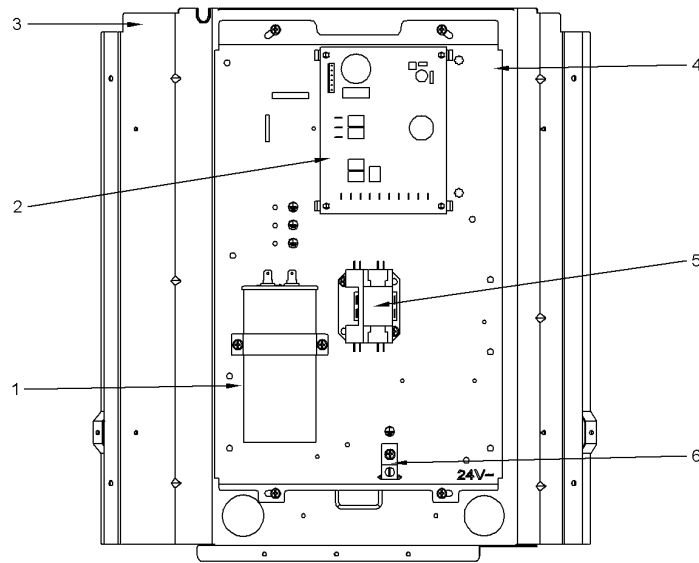
Part No.	Reference No.	Quantity	Description
PNL33872	1	1	PANEL; BELOW SIDE BOARD ASSEMBLY
BOX03894	2	1	BOX; E-PART BOX ASSEMBLY
PNL33848	3	1	PANEL; UPWARD SIDE BOARD
PNL33854	4	2	PANEL; SIDE BOARD ASSEMBLY
PIP02900	5	1	TUBE; COIL EVAPORATOR TUBE ASSEMBLY
COL29125	6	1	COIL; CONDENSER
COL25525	7	1	COIL; ASSEMBLY
SWT04049	8	1	SWITCH; HIGH PRESSURE
PIP02914	9	1	LINE; DISCHARGE
VAL12511	10	1	VALVE; LIQUID SERVICE VALVE
VAL12457	11	1	TUBE; LIQUID ASSEMBLY
VAL12456	12	1	VALVE; SUCTION SERVICE VALVE, LIQUID VALVE
VAL19361	13	1	VALVE; SUCTION SERVICE VALVE ASSEMBLY
FAN05659	14	1	FAN; FAN BLADE ASSEMBLY
WIR09213	15	1	WIRE; GROUND, GREEN
WIR08471	16	1	HARNESS; COMPRESSOR
BLT01037	17	8	BOLT ;M5X20MM ; GASKET, DIAMETER 18MM, ASSY (STAINLESS STEEL)
GRL02054	18	1	GRILLE; FAN
PNL33908	19	1	PANEL; TOP COVER ASSEMBLY
NUT01382	20	4	NUT; CAP NUT
BRD07022	21	1	FAN MOTOR MOUNT
MOT19247	22	1	MOTOR; FAN; BRUSHLESS DC
BLT01066	23	4	BOLT; MOTOR MOUNT
NUT01379	24	1	NUT;
COL29117	25	1	ASSEMBLY; COIL OUTLET TUBE
COL29120	26	1	ASSEMBLY; COIL INLET TUBE
PNL33847	27	1	PANEL; SUPPORTING BOARD
COM11972	28	1	COMPRESSOR; SCROLL
BAS02847	29	1	BASE; ASSEMBLY

AMERISTAR 16 SEER CONDENSING UNITS

75013532

REV.  
A

E-PART BOX ASSEMBLY  
3.5, 4.0 & 5.0 TON



All orderable Service Parts are identified for this product.

Parts that are not identified, will not be available to order.

This is a typical illustration. The unit in the field may not appear exactly as shown.

Parts List Number :M4AH6UP2#M4AH6UP2

Model Number :M4AC6042B1000AA

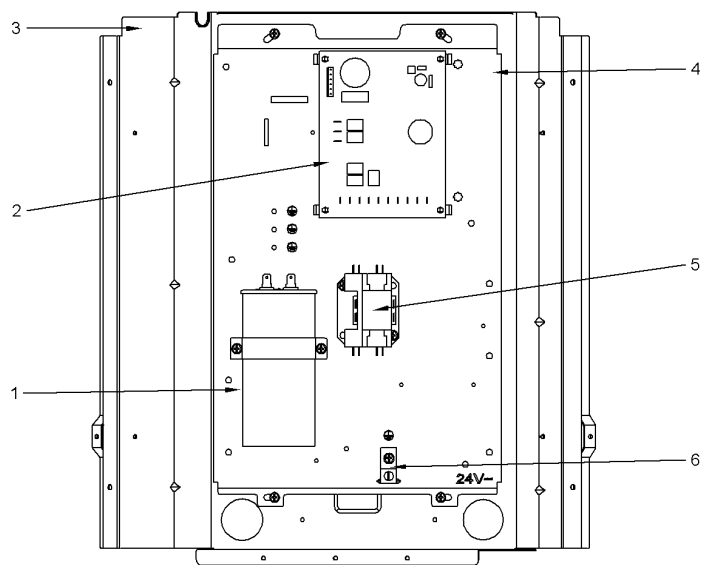
Part No.	Reference No.	Quantity	Description
75013532_M4AH6UP2_211133-P	*		E-PART BOX ASSEMBLY PARTS LIST

AMERISTAR 16 SEER CONDENSING UNITS

75013532

REV.  
A

E-PART BOX ASSEMBLY  
3.5, 4.0 & 5.0 TON



All orderable Service Parts are identified for this product.

Parts that are not identified, will not be available to order.

This is a typical illustration. The unit in the field may not appear exactly as shown.

<b>Part No.</b>	<b>Reference No.</b>	<b>Quantity</b>	<b>Description</b>
CPT02522	1	1	CAPACITOR; RUN; 45UF/450V-P2(2000H)
BRD07023	2	1	BOARD; OUTDOOR MAIN CONTROL BOARD ASSEMBLY
PLT06397	3	1	PLATE; INSTALLATION PLATE OF ELECTRIC PARTS SUBASSEMBLY
BOX03894	4	1	BOX; E-PART BOX ASSEMBLY
CTR02987	5	1	CONTACTOR; AC, 24V
TER01703	6	1	LUG; GROUND LUG

		M4AC6 / M4HP6 Ameristar Orifice / TXV Chart													
Outdoor	Indoor	Orifice Kit								TXV Kit					
		MAYORACHP0052	MAYORACHP0058	MAYORACHP0065	MAYORACHP0070	MAYORACHP0072	MAYORACHP0075	MAYORACHP0078	MAYORACHP0080	4AYTXVH3G2436A	4AYTXVH3G4248A	4AYTXVH3G6000A			
AC	M4AC6018B1000AA	M4AH4E37B1B00A	X												
		4GXCA001AC6HUA+TXV									X				
		4GXCB002AC6HUA+TXV									X				
	M4AC6024B1000AA	M4AH4E37B1B00A		X											
		4GXCA001AC6HUA+TXV										X			
		4GXCB002AC6HUA+TXV										X			
	M4AC6030B1000AA	M4AH4E37B1B00A			X										
		4GXCB016AC6HUA+TXV										X			
		4GXCC017AC6HUA				X									
	M4AC6036B1000AA	M4AH4E61B1C00A					X								
		4GXCB016AC6HUA+TXV										X			
		4GXCC017AC6HUA+TXV										X			
M4AC6042B1000AA	M4AH4E61B1C00A						X								
	4GXCC009AC6HUA							X							
	4GXCD010AC6HUA								X						
M4AC6048B1000AA	M4AH4E61B1C00A								X						
	4GXCC009AC6HUA+TXV											X			
	4GXCD010AC6HUA+TXV											X			
M4AC6060A1000AA	M4AH4E61B1C00A+TXV													X	
	4GXCC009AC6HUA+TXV													X	
	4GXCD010AC6HUA+TXV													X	
Heat Pump	M4HP6018B1000AA	M4AH4E37B1B00A						X							
	M4HP6024B1000AA	M4AH4E37B1B00A								X					
	M4HP6030B1000AA	M4AH4E37B1B00A+TXV												X	
	M4HP6036B1000AA	M4AH4E61B1C00A					X								
	M4HP6042B1000AA	M4AH4E61B1C00A+TXV											X		
	M4HP6048B1000AA	M4AH4E61B1C00A+TXV											X		
	M4HP6060B1000AA	M4AH6E60A1C00A+TXV												X	

Note: See indoor installation guide to see factory-installed orifice size. Since the manufacturer has a policy of continuous product and product data improvement, if the system combination you are looking for is not listed, check the latest version of the installation guides.

Parts List Number :M4AH6UP2#M4AH6UP2

Model Number :M4AC6042B1000AA

Part No.	Reference No.	Quantity	Description
75013545_M4AH6UP2_181339-P	*		TXV-ORIFICE CHART PARTS LIST

		M4AC6 / M4HP6 Ameristar Orifice / TXV Chart													
Outdoor	Indoor	Orifice Kit								TXV Kit					
		MAYORACHP0052	MAYORACHP0058	MAYORACHP0065	MAYORACHP0070	MAYORACHP0072	MAYORACHP0075	MAYORACHP0078	MAYORACHP0080	4AYTXVH3G2436A	4AYTXVH3G4248A	4AYTXVH3G6000A			
AC	M4AC6018B1000AA	M4AH4E37B1B00A	X												
		4GXCA001AC6HUA+TXV									X				
		4GXCB002AC6HUA+TXV									X				
	M4AC6024B1000AA	M4AH4E37B1B00A		X											
		4GXCA001AC6HUA+TXV										X			
		4GXCB002AC6HUA+TXV										X			
	M4AC6030B1000AA	M4AH4E37B1B00A			X										
		4GXCB016AC6HUA+TXV										X			
		4GXCC017AC6HUA				X									
	M4AC6036B1000AA	M4AH4E61B1C00A					X								
		4GXCB016AC6HUA+TXV										X			
		4GXCC017AC6HUA+TXV										X			
	M4AC6042B1000AA	M4AH4E61B1C00A						X							
		4GXCC009AC6HUA							X						
4GXCD010AC6HUA									X						
M4AC6048B1000AA	M4AH4E61B1C00A								X						
	4GXCC009AC6HUA+TXV											X			
	4GXCD010AC6HUA+TXV											X			
M4AC6060A1000AA	M4AH4E61B1C00A+TXV													X	
	4GXCC009AC6HUA+TXV													X	
	4GXCD010AC6HUA+TXV													X	
Heat Pump	M4HP6018B1000AA	M4AH4E37B1B00A						X							
	M4HP6024B1000AA	M4AH4E37B1B00A								X					
	M4HP6030B1000AA	M4AH4E37B1B00A+TXV												X	
	M4HP6036B1000AA	M4AH4E61B1C00A					X								
	M4HP6042B1000AA	M4AH4E61B1C00A+TXV											X		
	M4HP6048B1000AA	M4AH4E61B1C00A+TXV											X		
	M4HP6060B1000AA	M4AH6E60A1C00A+TXV												X	

Note: See indoor installation guide to see factory-installed orifice size. Since the manufacturer has a policy of continuous product and product data improvement, if the system combination you are looking for is not listed, check the latest version of the installation guides.

