



Lochinvar®

HIGH EFFICIENCY BOILERS & WATER HEATERS

**COMMERCIAL GAS
WATER HEATER**

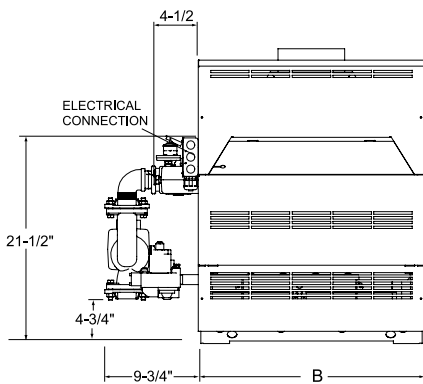
Submittal Sheet

CWA-CA

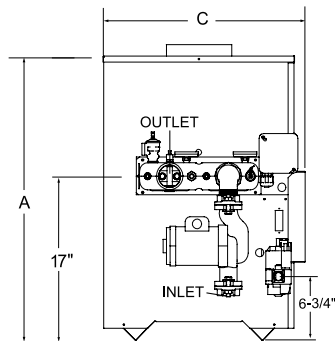
COMMERCIAL GAS WATER HEATERS

Job Name: _____ Model No. _____
 Location: _____ Type Gas _____ BTU/Hr _____
 Engineer: _____ Recovery Rate in GPH _____ @ _____ °F Rise
 Agent/Wholesaler: _____ Equipment Tag(s): _____
 Contractor: _____

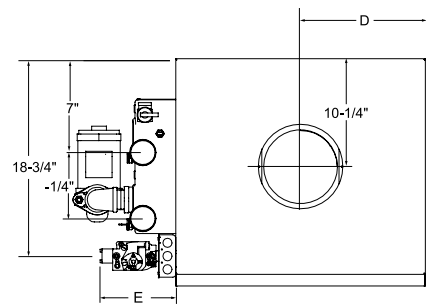
NOTES:



Front View



Side View



Top View

Model Number	Input MBH	GPH @ 100°F Rise	A	B	C	D	E	Vent Size	Gas Conn.	Ship. Weight
CWN090PM*	90,000	87	29-1/2"	15-1/2"	21-1/2"	7-3/4"	6-1/4"	5"	1/2"	175
CWN135PM*	135,000	131	29-1/2"	19-1/2"	21-1/2"	9-3/4"	6-1/4"	6"	1/2"	195
CWN180PM*	180,000	175	29-1/2"	23-1/2"	21-1/2"	11-3/4"	7-1/4"	7"	3/4"	220
CWN199PM*	199,000	193	29-1/2"	26-1/2"	21-1/2"	13-1/4"	7-1/4"	7"	3/4"	230
CWN201PM	201,000	193	29-1/2"	26-1/2"	21-1/2"	13-1/4"	7-1/4"	7"	3/4"	230
CWN225PM	225,000	218	29-1/2"	26-1/2"	21-1/2"	13-1/4"	7-1/4"	7"	3/4"	235
CWN270PM	270,000	262	29-1/2"	29-1/2"	21-1/2"	14-3/4"	7-1/4"	8"	3/4"	240
CWN315PM	315,000	305	29-1/2"	32-1/2"	21-1/2"	16-1/4"	6-1/4"	8"	3/4"	250
CWN360PM	360,000	349	29-1/2"	35-1/2"	21-1/2"	17-3/4"	8-1/4"	9"	1"	270
CWN399PM	399,000	387	29-1/2"	44-1/2"	22"	22-1/4"	5-1/2"	10"	1"	340
CWN500PM	500,000	485	34-1/2"	52-1/2"	22"	26-1/4"	9-1/2"	10"	1"	365

Notes: Change 'N' to 'L' to denote L.P. gas models

No deration for L.P. models.

Water Connections are 2" NPT on 6-1/4" centers.

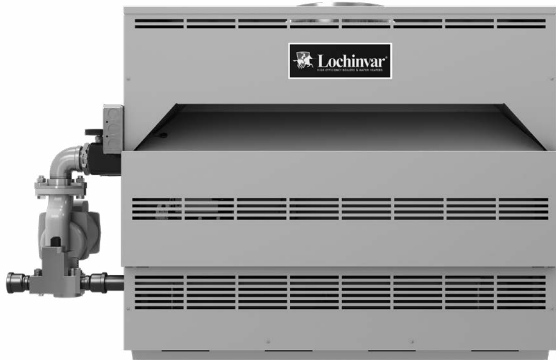
Performance data is based on manufacturer test results.

*Canada Only

Certified for Potable Water and Space Heating Applications

This water heater is suitable for water heating and space heating. Toxic chemicals, such as those used for boiler water treatment shall NEVER be introduced into this system. This water heater may NEVER be connected to any existing heating system or components previously used with non-potable water heating appliances.

Copper-Fin®



Firing Codes

- F1 - Standing Pilot
(Standard CW 90-270)
- F9 - Intermittent Spark Ignition
(Standard CW 315-500)
- F13 - GE GAP/FM/IRI
- F7 - California Code
(CW 225-500)

Standard Features

- › Built-In Draft Diverter
- › Stainless Steel Burners
- › ASME Copper Finned Tube Heat Exchanger
- › 160 psi Working Pressure
- › Gasketless Heat Exchanger Design
- › All Bronze Circulating Pump
- › Pump Delay/Freeze Protection
- › Remote Tank Thermostat
- › Glass-Lined Water Surfaces
- › Loch-Heat Ceramic Tile Combustion Chamber
- › ASME Temperature & Pressure Relief Valve
- › Terminal Strip
- › Automatic Reset High Limit
- › Manual Reset High Limit
- › Self-Diagnostic Indicator Lights
- › 24 Volt Control System
- › CSA Design Certified for Alcove Installation
- › CSA Design Certified for Installation on Combustible Floors
- › 3-Year Limited Warranty on Heat Exchanger

Optional Equipment

- Adjustable High Limit w/Manual Reset
- Contacts on Any Failure
(CW 315-500)
- Contacts for Air Louvers
(CW315-500)
- Cupro-Nickel Heat Exchanger
- Flow Switch
- Low Water Cut Off
- Stack Frame
- PVC Venting Kit (CW90-135)