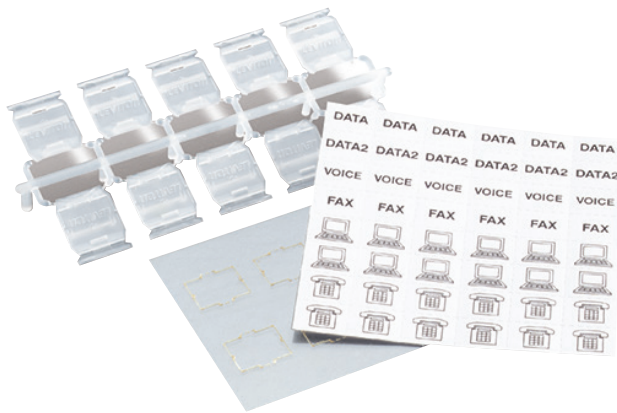


QuickPort® Shutters and Label Kits

APPLICATION

Leviton easy-to-use QuickPort Shutters are compatible with any Leviton CAT 5, CAT 5e, CAT 6, or CAT 6A workstation connector and feature a unique, hinged door that protects against dust and contamination. The Shutters come with a port identification window and pre-printed labels.



SPECIFICATION

QuickPort Shutters shall protect any Leviton CAT 5, CAT 5e, CAT 6, or CAT 6A connector. They shall be cULus listed, meet NOM and ACA requirements. The shutters shall be compatible with ANSI/TIA-606-B standards. The shutters shall be made of natural polypropylene featuring a single-piece hinge; the identification window shall be made of polycarbonate. The shutters shall come with a port identification window and preprinted labels.

FEATURES

- Alignment and snap-in feature for easy installation
- Port identification window
- Includes two sheets of white, pre-printed labels (96 icons)
- Includes a tree of shutters (50 shutters)
- Includes five window sheets (50 windows)

DESIGN CONSIDERATIONS

- Compatible with any Leviton QuickPort wallplates and housings with ID windows
- Compatible with any Leviton CAT 5, CAT 5e, CAT 6, or CAT 6A connector
- Single-piece hinged door protects against dust and contamination

STANDARDS COMPLIANCE

- ANSI/TIA-606-B

PHYSICAL SPECIFICATIONS

Dimensions: See page two
Materials: Window: polycarbonate
Shutter: natural polypropylene

COUNTRY OF ORIGIN

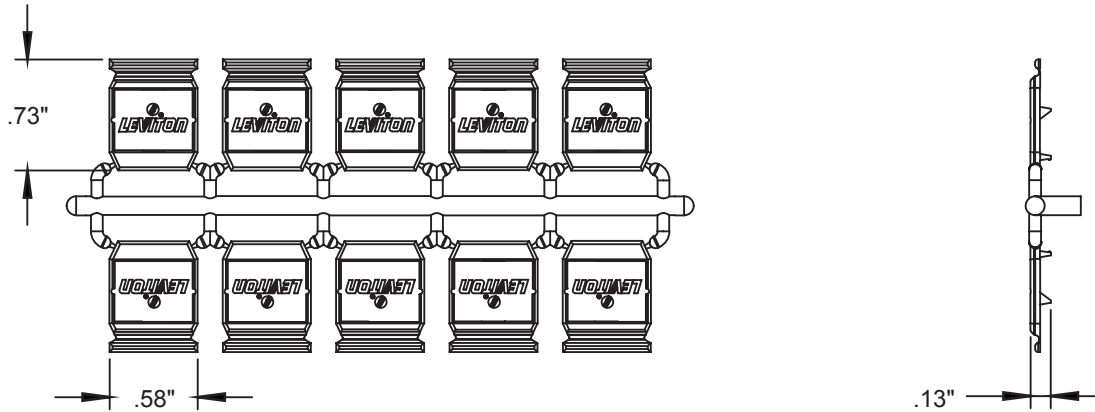
USA

WARRANTY INFORMATION

For a copy of Leviton product warranties, visit www.leviton.com/warranty.

ELECTRONIC FILES

For CAD files, typical specs, or technical drawings (.DXF, .DWG), visit www.leviton.com.



51084-ICN

PART NUMBERS

Description	Part No.
QuickPort® Shutter and Label Kit	51084-ICN