

Job Name/Location:

Tag #:

Date:

For:  File  Resubmit  
 Approval  Other \_\_\_\_\_

PO No.:

Architect: \_\_\_\_\_ GC: \_\_\_\_\_

Engr: \_\_\_\_\_ Mech: \_\_\_\_\_

Rep: \_\_\_\_\_  
 (Company) (Project Manager)

**LC367HV**  
 Ceiling Cassette Single Zone  
 Outdoor Unit (ODU) - LUU367HV Indoor Unit (IDU) - LCN367HV



**Performance:**

**Cooling:**

Cooling Capacity (Btu/h)	36,000
SEER	19
EER	13.5

SEER - Seasonal Energy Efficiency Ratio EER - Energy Efficiency Ratio

**Heating:**

Heating Capacity (Btu/h)	40,000
HSPF	9.50

HSPF - Heating Seasonal Performance Factor

**Electrical:**

Power Supply (V <sup>1</sup> /Hz/Ø)	208-230/60/1
MOP (A)	40
MCA (A)	24.5
Cooling Rated Amps (A)	20.2
Heating Rated Amps (A)	20.8
Compressor (A)	18.6
Fan (A)	1.2
Cooling Power Input (kW)	2.97
Heating Power Input (kW)	3.20

MOP - Maximum Overcurrent Protection MCA - Minimum Circuit Ampacity

**Piping:**

Liquid Line (in, OD)	3/8
Suction Line (in, OD)	5/8
Additional Refrigerant (oz/ft)	0.43
Max Pipe Length (ft) <sup>2</sup>	246
Pipe Length (no add'l Refrigerant, ft)	25
Max Elevation (ft)	98

**Features:**

- Inverter (Variable speed compressor)
- Internal condensate pump
- Swirl Wind
- Jet Cool
- Independent vane control
- Evaporator frost control
- Auto restart
- Auto changeover
- Ultra-quiet turbo fan
- Built-in low ambient standard, down to 5°F (cooling mode)
- Night quiet operation

**Included Accessories:**

- Wireless Handheld Remote Controller - PQWRHDF0

**Required Accessories (sold separately):**

- Cassette Grille (PT-UMC1)

**Optional Accessories (sold separately):**

- LG Programmable Thermostat - PREMTB10U
- Plasma Kit - PTPKMO
- Ventilation<sup>3</sup> Kit - PTVK410+PTVK420
- Auto Elevation Kit - PTEGMO

For continual product development, LG reserves the right to change specifications without notice.

© LG Electronics U.S.A., Inc., Englewood Cliffs, NJ. All rights reserved. "LG Life's Good" is a registered trademark of LG Corp. /www.lgvac.com

**Operating Range:**

**Outdoor Unit:**

Cooling (°F DB)	5-118
Heating (°F WB)	0-64

**Indoor Unit:**

Cooling (°F WB)	57-77
Heating (°F DB)	59-81

**Unit Data:**

Refrigerant Type	R410A
Refrigerant Control	EEV
Refrigerant Charge (lbs)	7.49
IDU Sound Pressure (H/M/L) ±3 dB(A) <sup>4</sup>	46/44/43
ODU Sound Pressure Max (Cool/Heat) ±3 dB(A) <sup>4</sup>	52/54
ODU Net Unit Weight (lbs)	203
ODU Shipping Weight (lbs)	227
IDU Net Unit Weight (lbs)	55
IDU Shipping Weight (lbs)	65
Grille Weight (lbs)	11
Grille Shipping Weight (lbs)	20

**Fan:**

ODU Type	Propeller
IDU Fan Type	Turbo
Fan Speeds (Fan/Cooling/Heating)	4/5/4
Fan Quantity (ODU + IDU)	(2 + 1)
Motor/Drive	Brushless Digitally Controlled/Direct
ODU Air Circulation (CFM)	1,942 x 2
IDU Air Circulation (CFM H/M/L)	1,060/989/918
Dehumidification (pts/hr)	7.7

**Notes:**

1. Acceptable operating voltage: 187V - 253V.
2. Piping lengths are equivalent.
3. Must comply with applicable codes for fire isolation dampers.
4. Sound pressure levels are tested in an anechoic chamber under ISO Standard 1996.
5. All communication/power cable to be minimum 18 American wire gauge (AWG), 4-conductor, stranded, shielded and must comply with applicable local and national code.
6. This unit comes with a dry helium charge.
7. Nominal data is rated 0 ft above sea level, with 25 ft of refrigerant line and a 0 ft level difference between outdoor and indoor units.
8. Power wiring cable size must comply with the applicable local and national code.
9. Must follow installation instructions in the applicable LG installation manual.



# Outdoor Unit (ODU) - LUU367HV

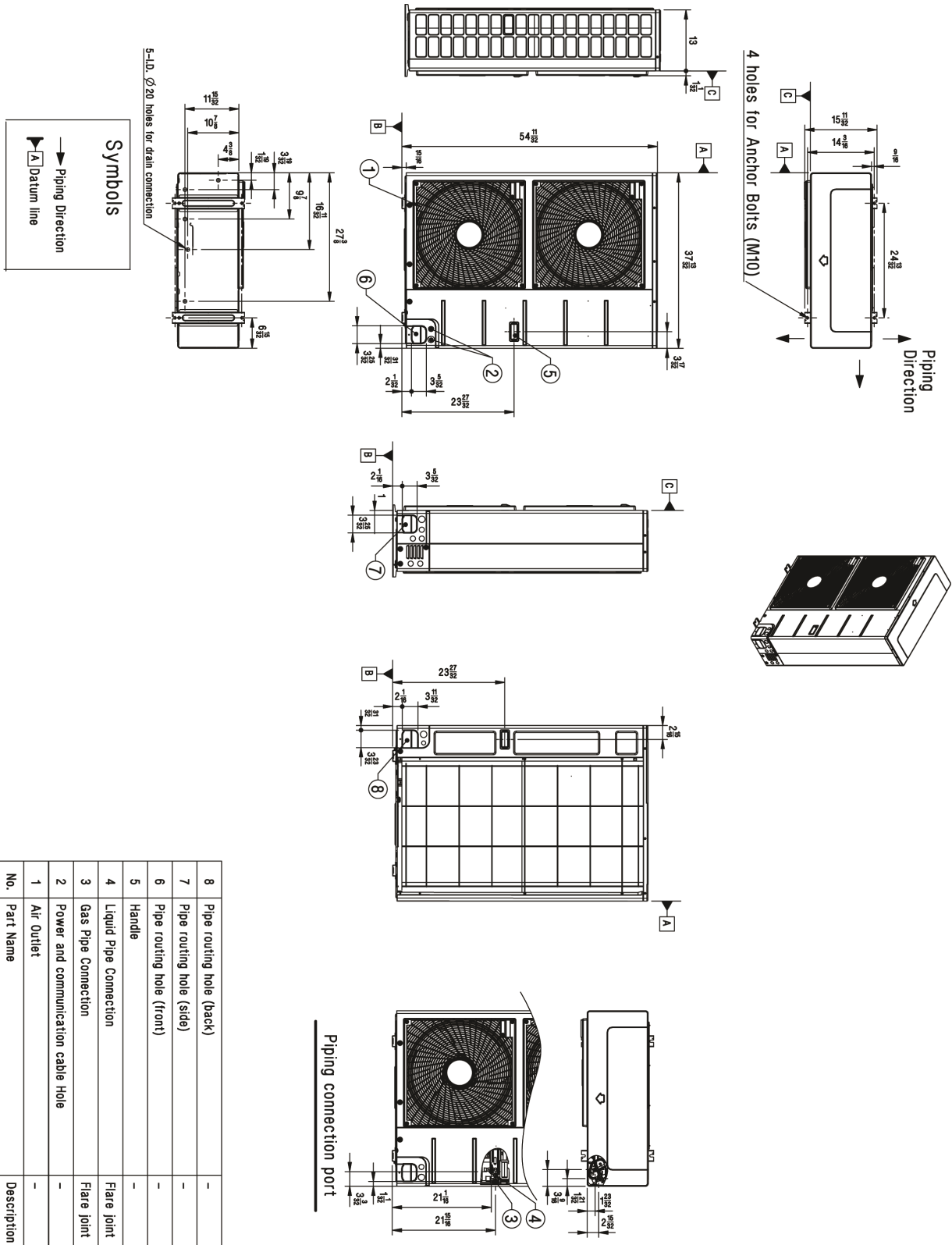
## Ceiling Cassette Single Zone



Tag #: \_\_\_\_\_

Date: \_\_\_\_\_

PO No.: \_\_\_\_\_



No.	Part Name	Description
8	Pipe routing hole (back)	-
7	Pipe routing hole (side)	-
6	Pipe routing hole (front)	-
5	Handle	-
4	Liquid Pipe Connection	Flare joint
3	Gas Pipe Connection	Flare joint
2	Power and communication cable hole	-
1	Air Outlet	-

# Indoor Unit (IDU) - LCN367HV

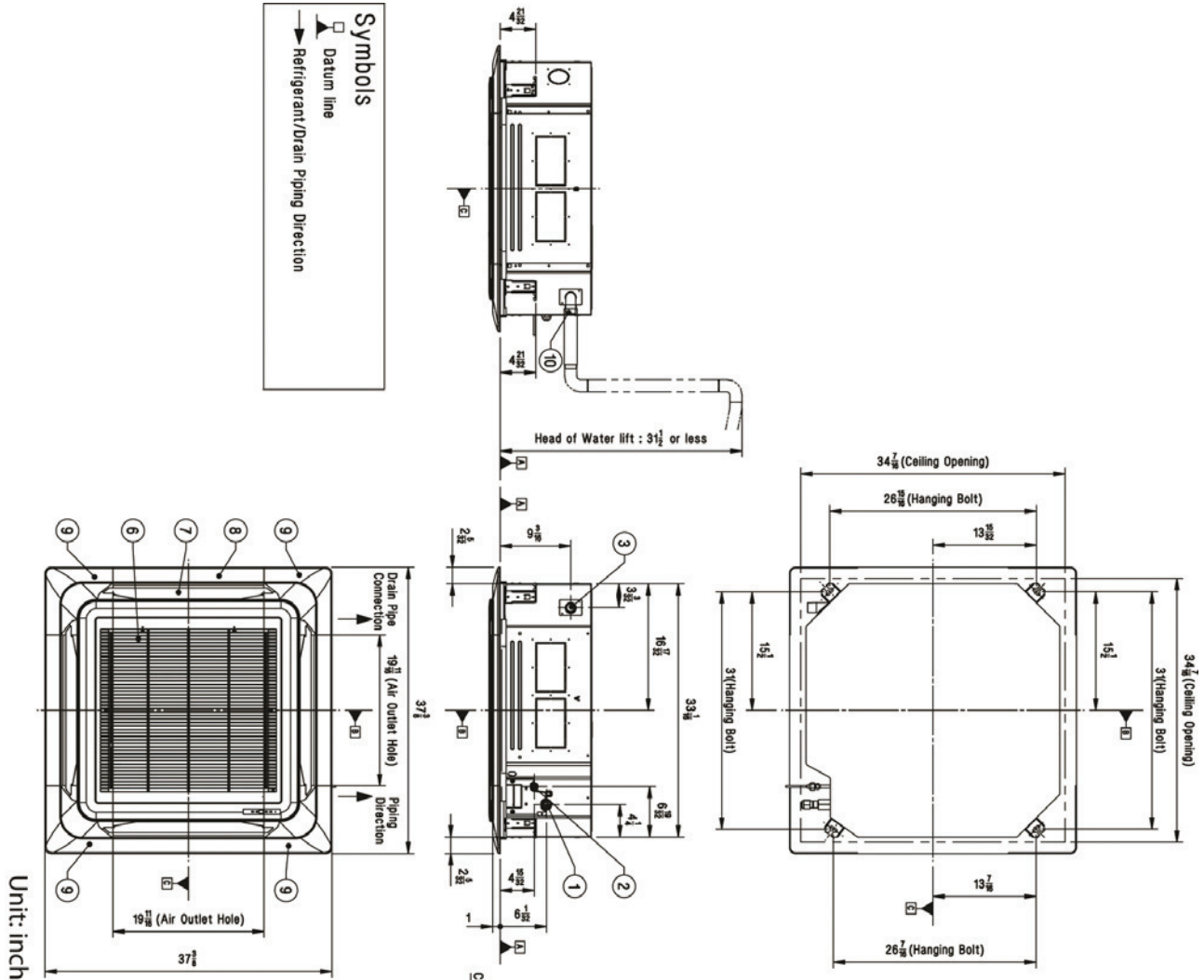
## Ceiling Cassette Single Zone



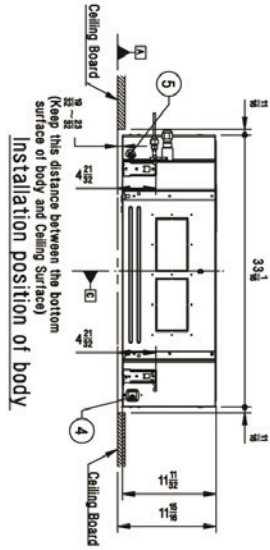
Tag #: \_\_\_\_\_

Date: \_\_\_\_\_

PO No.: \_\_\_\_\_



Unit: inch



Installation position of body

No.	Part Name	Description
10	Flexible Drain Hose	Supplied with product
9	Decoration Corner Cover	Supplied with panel
8	Decoration Panel (Accessory)	PT-JMC1
7	Air Outlet	-
6	Air Inlet	-
5	Wired remote controller wire routing hole	-
4	Power and communication cable routing hole	-
3	Drain Pipe Connection	-
2	Liquid Pipe Connection	-
1	Gas Pipe Connection	-