

# The World's Fastest Pipe Repair™



Made in Scotland, UK.

# Coming soon!

Introducing the **NEW Kibosh Eco Pack**, which will replace our standard plastic blister



# Put a Kibosh on it™



Kibosh is committed to making environmentally friendly solutions for a sustainable future

# Contents

1. Welcome
2. History/Kibosh story
3. History/Kibosh story
4. **Introducing New Professional Kits**
5. **Rapid Pipe Repair Clamp**
6. *How it works*
7. *Frequently asked questions*
8. *Frequently asked questions cont.*
9. *Rapid Pipe & Leak Repair Kit*
10. **New** - *Rapid Pipe & Leak Repair Kit PLUS*
11. **New** - *Professional Rapid Repair and FASTFREEZE Kits*
12. **New** - *Professional Rapid Repair and FASTFREEZE Kits cont.*
13. **New** - *Secure blister & Countertop display unit*
14. **The Kibosh FASTFREEZE™ range**
15. *How it works*
16. *Frequently asked questions*
17. **Product Details** - *Rapid Pipe Repair Clamps, Standard Blister*
18. **Product Details** - *Rapid Pipe Repair Clamps, Secure Blisters & CDU's*
19. **Product Details** - *Rapid Pipe & Leak Repair Kit*
20. **Product Details** - *New Rapid Pipe & Leak Repair Kit PLUS*
21. **Product Details** - *New Professional Maintenance Kits*
22. **Product Details** - *Kibosh FASTFREEZE Essentials Range*
23. **Product Details** - *Kibosh FASTFREEZE Essentials, Cont.*
24. **Product Details** - *Kibosh FASTFREEZE Essentials, Cont.*
25. *Accreditations and Awards*

# Welcome to Kibosh™

We are an ISO 9001 Certified Scottish company with a global business. We were founded by time-served plumber, Ross Dickinson who is driven by a passion for developing simple solutions to pipe repair and pipeline sector related problems.

We have a growing range of innovative and efficient pipe repair and maintenance products, including our new pipe freezing system – the Kibosh FASTFREEZE™ range.

Kibosh has a proven track record in the professional trades, DIY sectors, and is evolving with our industrial pipe repair clamps and high efficiency pipe freeze clamps with The Net Zero Technology Centre and The University of Strathclyde's Advanced Forming Research Centre as well as world renowned industry partners Harbour Energy, Total and Hydratight.

We are passionate about what we do, and we would love you to try our products and see for yourself the difference they make. Please let us know how you get on using our products. Please get in touch with any feedback. We would love to hear from you.



**Ross Dickinson**  
Founder, CEO & CTO

[r.dickinson@kiboshinnovation.com](mailto:r.dickinson@kiboshinnovation.com)



**Keith Gibson**  
Kibosh Chairman



**Jill Notman**  
COO & Finance

[j.notman@kiboshinnovation.com](mailto:j.notman@kiboshinnovation.com)



**Lauren Flockhart**  
Sales & Marketing

[lflockhart@kiboshinnovation.com](mailto:lflockhart@kiboshinnovation.com)

# Kibosh™ History

Plumber Ross Dickinson was called out to fix a burst pipe in the winter of 2007. The homeowner could not turn the water off to the burst pipe because the shut-off valve was hidden in the garage. By the time Ross traced the pipe back and was able to turn the water off, there was already a significant amount of very costly water damage...



Ross got home and asked himself why there was no product widely available to stop the leak and get the situation under control. Then he had his eureka moment. The **Kibosh Rapid Pipe Repair Clamp** was born. Ross then took it upon himself to develop and patent the product. Kibosh Ltd was incorporated in 2009.

Ross developed prototypes of a pipe repair clamp with local tool making and injection moulding company, Cademuir Engineering. He developed the product which was tested by the British Standards Institute (BSI), and he patented the design, both in the UK and internationally.

Initially Ross sold the product himself and he used the success of wins from innovation awards and Kibosh social media platforms to build awareness of the **Kibosh Rapid Pipe Repair Clamp**.



# Kibosh™ History

Sales of the **Kibosh Rapid Pipe Repair Clamps** quickly grew, and Kibosh also started to produce pipe freezing clamps, using the same IP.

As international interest and sales grew, Ross also saw the opportunity to develop pipe repair and freezing products for the Oil & Gas and industrial markets. In 2015 Ross secured funding to start phase 1 of this development with the Oil and Gas Innovation Centre (OGIC) and Heriot Watt University.

In 2018 Ross secured further funding for a Phase 2 of development of Kibosh clamps for up to 6" pipes, again with OGIC and with the University of Strathclyde's Advanced Forming Research Centre (AFRC). This development was completed in 2019.

In 2019, Ross secured private equity funding for Kibosh from Par Equity, an Edinburgh based investment syndicate. This allowed Ross to work full time at Kibosh.

We are currently working with The Net Zero Technology Centre (NZTC) in Aberdeen for the final development phase of our industrial pipe repair and high efficiency pipe freezing clamps. In this project we are supported by world renowned Industry Partners, Harbour Energy, Total and Hydratight.

In February 2021, we launched the new Kibosh brand, bringing to market our full range of pipe repair clamps and the NEW **FASTFREEZE** pipe freezing range.



# Introducing our **new** Kibosh Professional Kit Collection...



Made in Scotland, UK.



# The **Kibosh**<sup>TM</sup> Rapid Pipe Repair Clamp

**The #1 insurance claim in the UK and the US is for water damage, usually from burst or leaking pipes. According to the Association of British Insurers (ABI), the average claim for water damage from a burst pipe is £10,000\*.**

Pipes leak and burst for many reasons: freezing in winter, DIY accidents, accidental perforation by trades people when doing other tasks, poor fittings etc.

Whatever the cause, when a pipe bursts or starts leaking, damage starts immediately, and the longer it takes to stop the leak, the more costly the damage.

You may know where the mains water shut off-valve is located, but it is not always possible to access this valve, and often the valve does not work. If the leaking pipe is a central heating or tank fed pipe, the main shut off will have no effect.

Even if you are able to turn the water off, there is a new problem – no water for the house or even for a whole apartment block. The great benefit of Kibosh is that once it is fitted to a pipe and sealed, the water can be turned back on, allowing the pipe system to continue functioning at normal pressure, hot or cold, until a permanent repair can be arranged.

The **Kibosh Rapid Pipe Repair Clamp** is very simple and quick to use. It can stop leaks immediately, limiting and avoiding water damage and disruption, saving precious water and getting the situation under control.



# How it works

## Kibosh Rapid Pipe Repair Clamp

# 2



**1** Open the **Kibosh Rapid Repair Clamp** and fit it round the pipe, even over fittings.

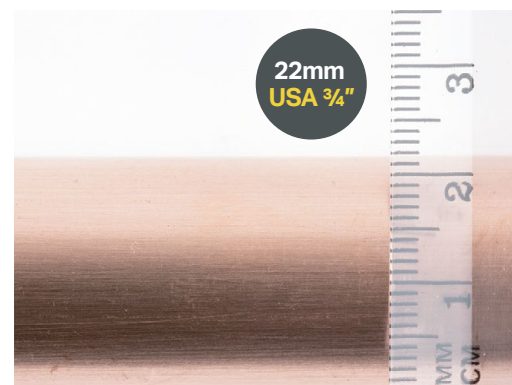
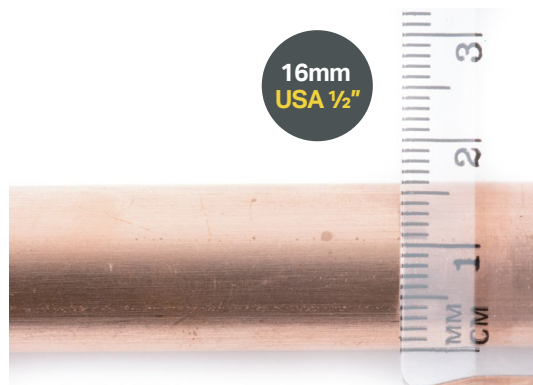
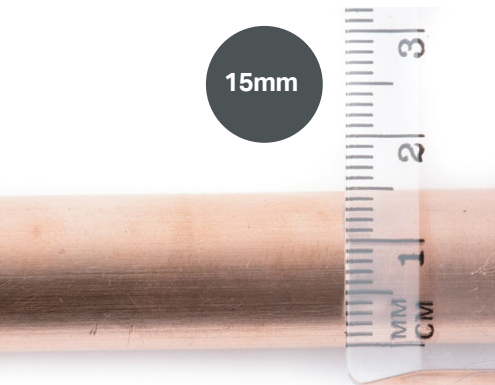


Close the clamp using the handle to snap it shut on metal, plastic and multi-layer pipes.

**Bish, Bash, Kibosh**  
- job done.

## Available sizes

The **Kibosh Rapid Pipe Repair Clamp** comes in three sizes.



# Frequently asked questions



## Which pipes does it work on?

The **Kibosh Rapid Pipe Repair Clamp** works on most types of pipe – metal, plastic, and multi-layer pipes.

## Does it fit clipped pipes?

Yes. Just open the clamp, place the housing not attached to latch behind the clipped pipe, then slide it over the leak and clamp shut.

## Can I turn the water or heating back on after it is fitted?

Yes, once fitted you can leave your water or heating pipe functioning at normal pressures, hot or cold.

## Who should use the Kibosh?

The **Kibosh Rapid Pipe Repair Clamp** is ideal for anyone who could perforate a pipe accidentally with a nail, drill, jigsaw or any other sharp power or hand tool.

- It is an essential toolbox item for trades people: plumbers, joiners, builders, electricians, carpet fitters...
- It is perfect for maintenance and janitorial companies.
- It is ideal for DIY enthusiasts, some of whom have been known to damage pipes unintentionally.
- It is also a "must have" for all homeowners as the pipes in their house may leak or burst.

## How long can I leave it on for?

The **Kibosh Rapid Pipe Repair Clamp** is a temporary pipe repair, not a permanent or semi-permanent repair. Although it can last longer, we recommend you arrange a permanent repair within 1 week.

## What about swollen burst pipes and leaky fittings?

Kibosh can accommodate swollen burst pipes with large splits and some leaking pipe fittings, in the cavity of the clamp.





## Does it work in confined spaces e.g. the notch of a joist?

Yes it does. Just partially close the Kibosh on the pipe, slide it into the joist notch, then fully clamp it shut. You may need to widen the notch in the joist to enable this. (See demo video)

## Is it reusable?

Yes it is. As long as the clamp and seal are still in good condition, the **Kibosh Rapid Pipe Repair Clamp** can be reused. Just unclip it from the pipe and put it back in your tool kit. When you store your Kibosh in your toolbox or top drawer, keep it open and in its packaging, not clamped shut, otherwise you may flatten and damage the seal.



## What pressure can the Kibosh Rapid Pipe Repair Clamp withstand?

The **Kibosh Rapid Pipe Repair Clamp** has been tested to withstand up to 10 bar/150 PSI. This is significantly more pressure than in any domestic system, where the average pressure is c.2-3 Bar/29-43 PSI.



## Has the Kibosh Rapid Pipe Repair Clamp been tested independently?

Yes. The **Kibosh Rapid Pipe Repair Clamp** has been tested by the British Standards Institute (BSI).

## Is it safe to use on domestic water pipes?

The **Kibosh Rapid Pipe Repair Clamp** is made from non-toxic materials.



## Can it be used on Central heating pipes?

Yes, it can be used on central heating pipes at high and low temperatures.



# Rapid Pipe & Leak Repair Kit

UK, Metric System  
and North America



This kit comes in a bright robust orange case complete with a Kibosh of each size, for the two most common pipe sizes in the UK & EU (1 x 15mm & 1 x 22mm) or North America (16mm/US 1/2" & 22mm/US 3/4").

The kit also comes with 2 x rolls of PTFE tape as an added extra, handy for leaky threaded fittings, valves etc.



# Kibosh Rapid Pipe Repair Kit PLUS<sup>+</sup>

UK, Metric System  
and North America

**New!**



**Our new repair kit comes by request, with two clamps of each size, for the two most common pipe sizes in the UK & EU (2 x 15mm and 2 x 22mm) or North America (2 x 16mm/US-CAN 1/2" and 2 x 22mm/US-CAN 3/4")**

**Ensuring you always have a spare when that emergency happens. Ideal for all trades and DIY.**

**Stop a leak becoming a flood, put a Kibosh on it™**

New!

# Our NEW Professional FASTFREEZE and Rapid Repair Kits in robust carry cases are a great evolution to the Kibosh range.

Kits give the ability to repair and isolate the most common pipe sizes in the UK, EU & North America, saving time, money and water.

Please see the Product Details pages for full product information...\*



# New Professional Maintenance kits

UK, Metric System and North America

**New!**

## Professional Rapid Repair and FASTFREEZE Kit

- 4 x reusable FASTFREEZE clamps allow freezing from 8mm to 22mm pipes including US-CAN 1/2" & 3/4"\*
- 2 x large cans of FASTFREEZE spray
- A reusable Kibosh Rapid Pipe Repair clamp of each size
- 2 x rolls of PTFE tape for leaky valves, threaded fittings and if pipe is kinked or damaged prior to freezing.
- User instruction and important information guide



## FASTFREEZE Professional Pipe Freezing Kit

- 4 x reusable FASTFREEZE clamps allow freezing from 8mm to 22mm pipes including US-CAN 1/2" & 3/4"\*
- 2 x large cans of FASTFREEZE spray
- 2 x spaces for a FASTFREEZE or Rapid Pipe Repair clamp of each size
- 2 x rolls of PTFE tape for leaky valves, threaded fittings and if pipe is kinked or damaged prior to freezing.
- User instructions and important information guide



New!

# New Secure Blister with increased POS

Our NEW, recyclable blister packaging stands out in any crowded retail environment, with the added security of lockable tabs.



# Kibosh Repair Countertop Display Unit (CDU)

## Containing x 6 Clamps

NEW and reusable, with all the Kibosh USP's featured on this striking display.



# The Kibosh™ FASTFREEZE™ range

The Kibosh FASTFREEZE™ is an extremely fast and efficient pipe freezing system which requires less freezing gas than foam sleeves to achieve and maintain an isolating ice plug.

Pipe freezing can be frustrating, expensive or both with variable success. High-end kits are very expensive and are a big investment for something which you may not need to use very often.

Basic freeze kits are available but the foam sleeves which go round the pipes are very inefficient and awkward to use.

The Kibosh FASTFREEZE™ range use the patented clamps to deliver a faster, simpler and more efficient freeze.

The freeze gas is injected into this sealed cavity containing contact foam, resulting in a very focused freeze. This system uses less gas than other methods, because the sealed clamp ensures no gas is wasted.

As a result, you will get a much faster freeze and can fully freeze a 15mm copper pipe within 3-5 minutes.



# How it works

## Kibosh FASTFREEZE™ system



**1** Open the clamp and fit it round the pipe.



**2** Make sure the inlet hole is below the vent hole.

**3**

Attach the straw to the FASTFREEZE spray nozzle.



**5**

Gently spray the freeze gas into the clamp, not full bursts!

**6**

Once frozen sufficiently, work can commence.



**4** Insert the straw into the inlet hole, again making sure the inlet hole is BELOW the exit hole.



**Bish, Bash, Kibosh™ - job done**

## Freezing guide

For the **Kibosh FASTFREEZE™** pipe freezing system

Pipe size	Freeze spray required	Ice plug formation	Ice plug life
15mm/US-CAN 1/2" Copper/steel	90g	3-5 mins	20 mins
22mm/US-CAN 3/4" Copper/steel	145g	5-7 mins	25 mins

### Available Sizes

The **Kibosh FASTFREEZE™** clamps can accommodate 8-10mm, 14-16mm which includes USA/CAN ½" and 21-22mm pipes which includes USA/CAN ¾" and ½" steel pipes.

# Frequently asked questions

## Which pipes does Kibosh FASTFREEZE™ work on?

The **Kibosh FASTFREEZE™** Clamp works on most types of pipe – copper, steel, plastic\*, iron. (\*plastic pipe requires at least 50% more freeze spray).

## Can the Kibosh FASTFREEZE™ clamps be used with other available pipe freezing sprays?

Yes, **Kibosh FASTFREEZE™** clamps can be used with and have the same inlet straw size as other leading pipe freeze sprays on the UK & US market.

**FASTFREEZE** spray can also be used with other pipe freezing products in the market.

*\*Compatible for use with most freezing solutions- designed for use with R-1234ze & R-134a.*

## Does it work in tight spaces and on clipped pipes?

Yes it does. The **Kibosh FASTFREEZE™** clamps are designed for use on clipped pipes and can be fitted in tight confined spaces.

## Is it reusable?

Yes it is. The **Kibosh FASTFREEZE™** Clamps are designed to be re-used. The contact foam is also suitable for multiple uses. Just follow the user instructions that come with every kit and on [www.kiboshpiperepair.com](http://www.kiboshpiperepair.com)

## What temperature will the FASTFREEZE kit achieve?

The **Kibosh FASTFREEZE™** spray can achieve -30°C.

## Is FASTFREEZE spray bad for the environment?

**Kibosh FASTFREEZE™** spray is the new more environmentally friendly R-1234ze with Low Global Warming Potential.



Low Global Warming Potential



# Kibosh Rapid Pipe Repair Clamps



## Product Details

For the full User Guides and all other important information, please go to [www.kiboshpiperepair.com](http://www.kiboshpiperepair.com)



Product	US/Canada equivalent	Product code	EAN number	Weight	Dimensions Closed clamp as in picture (L x W x D)	Packaging dimensions (L x W x D)
---------	----------------------	--------------	------------	--------	--	-------------------------------------



n/a

**KIB15BK-R**

5060295  
120147

**140g**

60mm x  
70mm x  
52mm

190mm x  
95mm x  
25mm

### Kibosh Rapid Repair Clamp in Standard Blister (15mm)



1/2"

**KIB16BK-R**

5060295  
120154

**140g**

60mm x  
70mm x  
52mm

190mm x  
95mm x  
25mm

### Kibosh Rapid Repair Clamp in Standard Blister (16mm | US/Canada 1/2")



3/4"

**KIB22BK-R**

5060295  
120161

**160g**

63mm x  
70mm x  
62mm

190mm x  
95mm x  
25mm

### Kibosh Rapid Repair Clamp in Standard Blister (22mm | US/Canada 3/4")

Product	US/Canada equivalent	Product code	EAN number	Weight	Dimensions Closed clamp as in picture (L x W x D)	Packaging dimensions (L x W x D)
---------	----------------------	--------------	------------	--------	--	-------------------------------------



n/a

**KIB15BK-RS**

5060295  
120147

**155g**

60mm x  
70mm x  
52mm

112mm x  
233mm x  
35mm

**Kibosh Rapid Repair Clamp in Secure Blister, with increased POS (15mm)**



1/2"

**KIB16BK-RS**

5060295  
120154

**155g**

60mm x  
70mm x  
62mm

112mm x  
233mm x  
35mm

**Kibosh Rapid Repair Clamp in Secure Blister, with increased POS (16mm | US/CANADA 1/2")**



3/4"

**KIB22BK-RS**

5060295  
120161

**175g**

60mm x  
70mm x  
52mm

112mm x  
233mm x  
35mm

**Kibosh Rapid Repair Clamp in Secure Blister, with increased POS (22mm | US/CANADA 3/4")**



n/a

**KIBCDU15-R**

n/a

**1195g**

270mm x  
125mm x  
375mm

285mm x  
130mm x  
240mm

**6 x Secure Blister Kibosh Pipe Repair Clamps in Countertop Display Unit (15mm)**



1/2"

**KIBCDU16-R**

n/a

**1195g**

270mm x  
125mm x  
375mm

285mm x  
130mm x  
240mm

**6 x Secure Blister Kibosh Pipe Repair Clamps in Countertop Display Unit (16mm | US/CANADA 1/2")**



3/4"

**KIBCDU22-R**

n/a

**1330g**

270mm x  
125mm x  
375mm

285mm x  
130mm x  
240mm

**6 x Secure Blister Kibosh Pipe Repair Clamps in Countertop Display Unit (22mm | US/CANADA 3/4")**

# Kibosh Rapid Pipe Repair Clamp Kits



## Product Details

For the full User Guides and all other important information, please go to [www.kiboshpiperepair.com](http://www.kiboshpiperepair.com)



Product	US/Canada equivalent	Product code	EAN number	Weight	Dimensions Closed clamp as in picture (L x W x D)	Packaging dimensions (L x W x D)
---------	----------------------	--------------	------------	--------	--	----------------------------------



3/4"

KIBKITO-R

5060295  
120178

**470g**  
with contents

60mm x  
70mm x  
52mm  
  
63mm x  
70mm x  
62mm

230mm x  
190mm x  
45mm

### Rapid Pipe & Leak Repair Kit - UK and Metric System (1 x 15mm & 1 x 22mm + 2 rolls of PTFE Tape)



1/2"  
3/4"

KIBKITO-RNA

5060295  
120178

**470g**  
with contents

60mm x  
70mm x  
52mm  
  
63mm x  
70mm x  
62mm

230mm x  
190mm x  
45mm

### Rapid Pipe & Leak Repair Kit - North American System (1 x 16mm/US 1/2" & 1 x 22mm/US 3/4" + 2 rolls of PTFE Tape)

# Rapid Pipe Repair Kit PLUS<sup>+</sup>

**New!**



Product	US/Canada equivalent	Product code	EAN number	Weight	Dimensions Closed clamp as in picture (L x W x D)	Packaging dimensions (L x W x D)
---------	----------------------	--------------	------------	--------	--	-------------------------------------



3/4"

**KIBKITO-R2**

5060295  
120208

**690g**

60mm x  
70mm x  
52mm  
  
63mm x  
70mm x  
62mm

230mm x  
190mm x  
45mm

**Kibosh Rapid Pipe Repair Kit PLUS - UK and Metric System (2 x 15mm & 2 x 22mm)**



1/2"  
3/4"

**KIBKITO-RNA2**

5060295  
120208

**690g**

60mm x  
70mm x  
52mm  
  
63mm x  
70mm x  
62mm

230mm x  
190mm x  
45mm

**Kibosh Rapid Pipe Repair Kit PLUS - North American System (2 x 16mm/US-CAN 1/2" & 2 x 22mm/US-CAN 3/4")**

# New Professional Maintenance Kits

## Product Details

For the full User Guides and all other important information, please go to [www.kiboshpiperepair.com](http://www.kiboshpiperepair.com)



Product	US/Canada equivalent	Product code	EAN number	Weight	Dimensions Closed clamp as in picture (L x W x D)	Packaging dimensions (L x W x D)
---------	----------------------	--------------	------------	--------	--	----------------------------------



1/2"  
3/4"  
Freezing

3/4"  
Repair

**KIBKIT6-RF**

5060295  
120192

**2100g**  
total weight

**586g**  
fluid weight

60mm x  
70mm x  
52mm

63mm x  
70mm x  
62mm

330mm x  
280mm x  
80mm

**Kibosh Professional Rapid Repair & FASTFREEZE Kit - UK and Metric System:** 2 x 15mm, 2 x 22mm FASTFREEZE clamps, 1 x 15mm, 1 x 22mm Rapid Repair clamps, 2 x large FASTFREEZE sprays, 2 x rolls of PTFE tape, instructions and important information manual (8-22mm\* pipes)



1/2"  
3/4"  
Freezing

1/2"  
3/4"  
Repair

**KIBKIT6-RFNA**

5060295  
120192

**2100g**  
total weight

**586g**  
fluid weight

60mm x  
70mm x  
52mm

63mm x  
70mm x  
62mm

330mm x  
280mm x  
80mm

**Kibosh Professional Rapid Repair & FASTFREEZE Kit - North American System:** 2 x 15mm/US-CAN 1/2", 2 x 22mm/US-CAN 3/4" FASTFREEZE clamps, 1 x 16mm/US-CAN 1/2", 1 x 22mm/US-CAN 3/4" Rapid Repair clamps, 2 x large FASTFREEZE sprays, 2 x rolls of PTFE tape, instructions and important information manual (8-22mm\* | US-CAN 1/2" & 3/4" pipes)



1/2"  
3/4"

**KIBKIT6-F2**

5060295  
120185

**1860g**  
total weight

**586g**  
fluid weight

60mm x  
70mm x  
52mm

63mm x  
70mm x  
62mm

330mm x  
280mm x  
80mm

**Kibosh Professional FASTFREEZE Kit - UK, Metric & North American System:** 2 x 15mm/US-CAN 1/2", 2 x 22mm/US-CAN 3/4" FASTFREEZE clamps, 2 x large FASTFREEZE sprays, 2 x rolls of PTFE tape, instructions and important information manual (8-22mm\* | US-CAN 1/2" & 3/4" pipes). Kit includes two extra spaces for an additional Repair or Freeze clamp of each size.

# Kibosh FASTFREEZE™ Essentials Range



## Product Details

For the full User Guides and all other important information, please go to [www.kiboshpiperepair.com](http://www.kiboshpiperepair.com)



Name	US/Canada equivalent	Product code	EAN number	Weight	Product Dimensions closed clamp (L x W x D)	Packaging dimensions (L x W x D)
------	----------------------	--------------	------------	--------	---	----------------------------------



1/2"

KIB15BE-F

n/a

105g  
clamp only

60mm x  
70mm x  
52mm

n/a

Kibosh FASTFREEZE™ 15mm clamp only (14-16mm | US/Canada 1/2")



3/4"

KIB22BE-F

n/a

125g  
clamp only

63mm x  
70mm x  
62mm

n/a

Kibosh FASTFREEZE™ 22mm clamp only (21-22mm | US/Canada 3/4")

twenty three

Product	US/Canada equivalent	Product code	EAN number	Weight	Dimensions Closed clamp as in picture (L x W x D)	Packaging dimensions (L x W x D)
---------	----------------------	--------------	------------	--------	--	--



1/2"

**KIB15FF-F**

5060295  
120123

**135g**

60mm x  
70mm x  
52mm

190mm x  
95mm x  
25mm

**Kibosh FASTFREEZE™ 15mm clamp in Blister including reducers, contact foam & straw (8-16mm | US/Canada 1/2")**



3/4"

**KIB22FF-F**

5060295  
120130

**145g**

63mm x  
70mm x  
62mm

190mm x  
95mm x  
25mm

**Kibosh FASTFREEZE™ 22mm clamp in Blister including contact foam & straw (21-22mm | US/Canada 3/4")**



n/a

**KIBTPV-F**

n/a

n/a

15mm x  
7mm x  
10mm

n/a

**Kibosh FASTFREEZE™ 8-10mm reducing inserts for 15mm clamp**



n/a

**KIBSP176-F**

5060295  
120116

**275g**  
total weight

**176g**  
fluid weight

163mm x  
65mm x  
65mm

n/a

**Kibosh FASTFREEZE™ spray small (176g)**



n/a

**KIBSP293-F**

5060295  
120109

**410g**  
total weight

**293g**  
fluid weight

223mm x  
65mm x  
65mm

n/a

**Kibosh FASTFREEZE™ spray large (293g)**

Product	US/Canada equivalent	Product code	EAN number	Weight	Dimensions Closed clamp as in picture (L x W x D)	Packaging dimensions (L x W x D)
---------	----------------------	--------------	------------	--------	---	-------------------------------------



1/2"

**KIBKIT1-F**

5060295  
120048

**435g**  
total weight

180mm x  
120mm x  
80mm

180mm x  
120mm x  
80mm

**176g**  
fluid weight

**Kibosh FASTFREEZE™ kit 1 - 1 x 15mm FASTFREEZE clamp, 1 x small FASTFREEZE spray (8-16mm | US/Canada 1/2")**



3/4"

**KIBKIT2-F**

5060295  
120055

**450g**  
total weight

180mm x  
120mm x  
80mm

180mm x  
120mm x  
80mm

**176g**  
fluid weight

**Kibosh FASTFREEZE™ kit 2 - 1 x 22mm FASTFREEZE clamp, 1 x small FASTFREEZE spray (21 - 22mm | US/Canada 3/4")**



1/2"  
3/4"

**KIBKIT3-F**

5060295  
120062

**700g**  
total weight

225mm x  
120mm x  
80mm

225mm x  
120mm x  
80mm

**293g**  
fluid weight

**Kibosh FASTFREEZE™ kit 3 - 1 x 15mm, 1 x 22mm FASTFREEZE clamps, 1 x large FASTFREEZE spray (8-22mm | US/Canada 1/2" & 3/4")**



1/2"

**KIBKIT4-F**

5060295  
120079

**685g**  
total weight

225mm x  
120mm x  
80mm

225mm x  
120mm x  
80mm

**293g**  
fluid weight

**Kibosh FASTFREEZE™ kit 4 - 2 x 15mm FASTFREEZE clamps, 1 x large FASTFREEZE spray (8-16mm | US/Canada 1/2")**



3/4"

**KIBKIT5-F**

5060295  
120086

**720g**  
total weight

225mm x  
120mm x  
80mm

225mm x  
120mm x  
80mm

**293g**  
fluid weight

**Kibosh FASTFREEZE™ kit 5 - 2 x 22mm FASTFREEZE clamps, 1 x large FASTFREEZE spray (21 - 22mm | US/Canada 3/4")**



1/2"  
3/4"

**KIBKIT6-F**

5060295  
120093

**1365g**  
total weight

225mm x  
195mm x  
80mm

225mm x  
195mm x  
80mm

**586g**  
fluid weight

**Kibosh FASTFREEZE™ kit 6 - 2 x 15mm, 2 x 22mm FASTFREEZE clamps, 2 x large FASTFREEZE sprays (8-22mm | US/Canada 1/2" & 3/4")**

# Accreditations and Awards

[www.kiboshpiperepair.com](http://www.kiboshpiperepair.com)



British Plastics Federation and Horner's Fellowship  
Highly Commended Certificate for Innovation 2012



Australian International  
Design Awards  
Good Design Award 2013



Made in Scotland, UK



SCAN  
for demo videos









# Contact

[www.kiboshpiperepair.com](http://www.kiboshpiperepair.com)

## Kibosh Ltd

Unit 9 Huddersfield Street  
Galashiels  
Scotland  
United Kingdom  
TD1 3BF

**Tel:** +44 (0)1896 753571

**Mob:** +44 (0)7515 449515

**Email:** [sales@kiboshinnovation.com](mailto:sales@kiboshinnovation.com)

