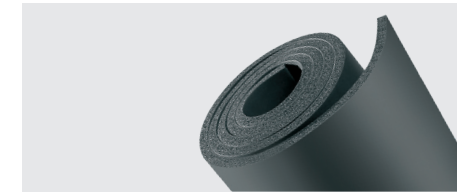


INSUL-SHEET ► NBR/PVC (CLOSED CELL)

ASTM D1056 Class	2B1
Density	3 - 6 lb/ft ³
25% Compression Resist.	2 - 4 psi
50% Compression Set	35% max
Tensile Strength	30 psi min.
Elongation	100% min.
Tear Strength	4.5 lb/in min.

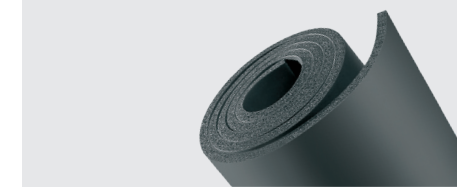
Thermal Conductivity	0.24 btu-in/hr-ft ² -°F
Flammability	25/50 (2"), UL 94 5VA, NFPA 130
Service Temperature	-40°F to +220°F
Water Vapor Permeability	<0.01 perm-in
Maximum Thickness	2"
Specs	ASTM C534 Grade 1, Mil-P-15280J



HT ► EPDM (CLOSED CELL)

ASTM D1056 Class	2A1
Density	3 - 6 lb/ft ³
25% Compression Resist.	2 - 4 psi
50% Compression Set	35% max
Tensile Strength	30 psi min.
Elongation	125% min.
Tear Strength	6.0 lb/in min.

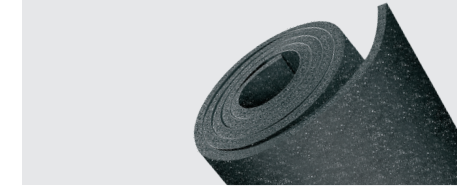
Thermal Conductivity	0.26 btu-in/hr-ft ² -°F
Flammability	25/50 (1"), UL 94 5VA
Service Temperature	-65°F to +300°F
Water Vapor Permeability	<0.1 perm-in
Maximum Thickness	1-1/4"
Specs	ASTM C534 Grade 2



ECO ► NBR (CLOSED CELL, HALOGEN-FREE)

ASTM D1056 Class	2B1
Density	3 - 5 lb/ft ³
25% Compression Resist.	2 - 4 psi
50% Compression Set	35% max
Tensile Strength	25 psi min.
Elongation	75% min.
Tear Strength	3.8 lb/in min.

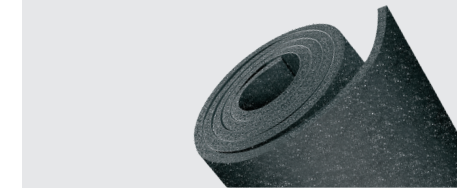
Thermal Conductivity	0.30 btu-in/hr-ft ² -°F
Flammability	25/50 (3/4"), UL 94 5VA
Service Temperature	-40°F to +250°F
Water Vapor Permeability	<0.1 perm-in
Maximum Thickness	1"
Specs	ASTM C534 Grade 3, EB 4013, IMO



K 41-PA ► NBR/PVC (CLOSED CELL)

ASTM D1056 Class	2B1
Density	3 - 5 lb/ft ³
25% Compression Resist.	2 - 4 psi
50% Compression Set	30% max
Tensile Strength	40 psi min.
Elongation	100% min.
Tear Strength	8.0 lb/in min.

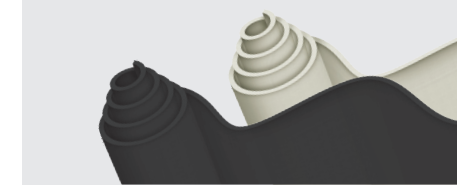
Thermal Conductivity	0.25 btu-in/hr-ft ² -°F
Flammability	UL 94 HF-1
Service Temperature	-40°F to +220°F
Maximum Thickness	1-1/2"
Automotive Specs	GMW 15473 Class 1 Type 4, Chrysler MSAY 516 Type 1, Ford WSK-M2D419-A Type 2, Ford WSS-M99P32-C



K 41-N ► NBR/PVC (CLOSED CELL)

ASTM D1056 Class	2B1
Density	3 - 6 lb/ft ³
25% Compression Resist.	2 - 5 psi
50% Compression Set	25% max
Tensile Strength	50 psi min.
Elongation	100% min.
Tear Strength	9.0 lb/in min.

Thermal Conductivity	0.33 btu-in/hr-ft ² -°F
Flammability	UL 94 HF-1, V-0, 5VA
Service Temperature	-40°F to +200°F
Maximum Thickness	1-1/2"
Automotive Specs	GMW 15473 Class 1 Type 4, Chrysler MSAY 516 Type 1, Ford WSK-M2D419-A Type 2, Ford WSS-M99P32-C



K 42-N ► NBR/PVC (CLOSED CELL)

ASTM D1056 Class	2B2
Density	6 - 8 lb/ft ³
25% Compression Resist.	5 - 9 psi
50% Compression Set	25% max
Tensile Strength	75 psi min.
Elongation	100% min.
Tear Strength	15.0 lb/in min.

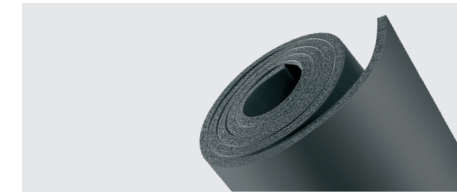
Thermal Conductivity	0.33 btu-in/hr-ft ² -°F
Flammability	UL 94 HF-1, V-0, 5VA
Service Temperature	-40°F to +200°F
Maximum Thickness	1-1/2"
Automotive Specs	GMW 15473 Class 1 Type 4, Chrysler MSAY 516 Type 2, Ford WSK-M2D419-A Type 3, Ford WSS-M99P32-C



K 40-P ► NBR/PVC (CRUSHED, SEMI-CLOSED CELL)

ASTM D1056 Class	1B0
Density	3.5 - 5.5 lb/ft ³
25% Compression Resist.	1 psi max
50% Compression Set	4% max
Tensile Strength	15 psi min.
Elongation	100% min.

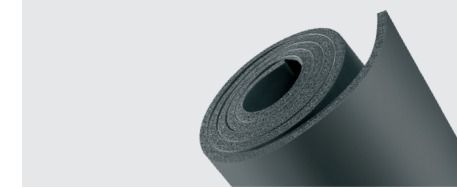
Tear Strength	4.0 lb/in min.
Flammability	UL 94 HF-1, V-0
Service Temperature	-40°F to +200°F
Maximum Thickness	1-1/8"
Automotive Specs	GMW 15473 Class 1 Type 1, Toyota TSK 6505G Class 2A



K 40-E ► EPDM (CRUSHED, SEMI-CLOSED CELL)

ASTM D1056 Class	1A0
Density	4 - 7 lb/ft ³
25% Compression Resist.	1 psi max
50% Compression Set	5% max
Tensile Strength	20 psi min.
Elongation	100% min.
Tear Strength	5.0 lb/in min.

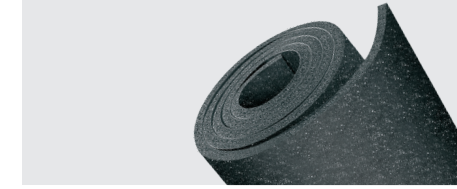
Flammability	UL 94 HF-1, V-0, 5VA
Service Temperature	-65°F to +300°F
Maximum Thickness	1-1/8"
Automotive Specs	GMW 15473 Class 1 Type 1, Chrysler MSAY 430 Type 1, Toyota TSK 6505G Class 2A, Ford WSB-M3G212A



K 20-X ► PE (CLOSED CELL, CHEMICALLY CROSS-LINKED)

Density	2.0 lb/ft ³
25% Compression Resist.	5.5 - 6.5 psi
50% Compression Resist.	13.5 - 14.5 psi
50% Compression Set	30% max
Tensile Strength	45 psi min.
Elongation	80% min.
Tear Strength	12.0 lb/in min.

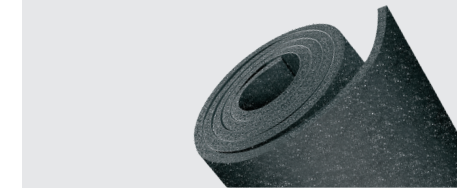
Flammability	UL 94 HF-1
Service Temperature	-65°F to +210°F
Maximum Thickness	5/8"
Automotive Specs	GMW 15063 Type V, Ford WSS-M99P32-D1, Ford ESA-M8G53-A, Chrysler MSAY 551A Grade 1



K 40-X ► PE (CLOSED CELL, CHEMICALLY CROSS-LINKED)

Density	4.0 lb/ft ³
25% Compression Resist.	11.0 psi
50% Compression Resist.	24.0 psi
50% Compression Set	15% max
Tensile Strength	105 psi min.
Elongation	95% min.
Tear Strength	24.0 lb/in min.

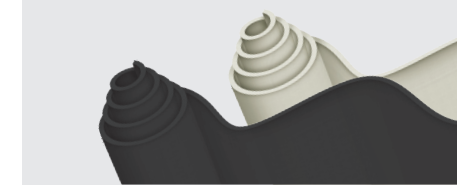
Flammability	FMVSS302
Service Temperature	-65°F to +210°F
Water Absorption	<0.01 lb/sf
Maximum Thickness	3/8"
Automotive Specs	GMW 15063 Type X / XII, Ford WSS-M99P32-D1, Chrysler MSAY 551A Grade 3



GK / GV ► SBR/EVA (SOLID)

Density	125 lb/ft ³
Tensile Strength	300 psi min.
Elongation	25% min.
Tear Strength	50.0 lb/in min.
Flammability	UL 94 HF-1 (GK only)

Service Temperature	-40°F to +158°F
Sound Blocking	0.5 lb/ft ² : 21 dB 1.0 lb/ft ² : 26 dB 1.5 lb/ft ² : 29 dB
GV Marine Specs	IMO A 6553, IMO FTP Code Part 5, Wheelmark - MED 36/98/CE



AB 15 ► NBR/PVC (OPEN CELL, RE-BONDED)

Density	15 lb/ft ³
25% Compression Resist.	6.5 - 7.5 psi
50% Compression Set	8% max
Tensile Strength	10 psi min.
Elongation	25% min.
Thermal Conductivity	0.30 btu-in/hr-ft ² -°F

Flammability	UL 94 HBF
Service Temperature	-40°F to +185°F
Sound Absorption	NRC 0.70 (1")
Sound Blocking	14 dB
Bun Dimensions	19" high x 59" wide x 78" long





CONTACT

K-FLEX USA

100 K-Flex Way Youngsville, NC 27596
Phone (800) 765-6475
E-mail info@kflexusa.com

K-FLEX de México, S. de R.L. de C.V.

1Av. Universal No. 540,
Vynmsa Aeropuerto Apodaca Industrial Park,
Apodaca, Nuevo Leon, México C.P. 66626
Teléfono +52 (81)2 060 0132

www.kflexusa.com

2020

© K-FLEX® US_DOC_K-TEK PRODUCT RANGE_0820; K-FLEX® reserves the right to change data and technical requirements without notice.



K-FLEX® PERFORMANCE FOAM PRODUCT RANGE

2020

AUGUST 2020

**K-FLEX® PERFORMANCE FOAM
PRODUCT RANGE**



www.kflex.com