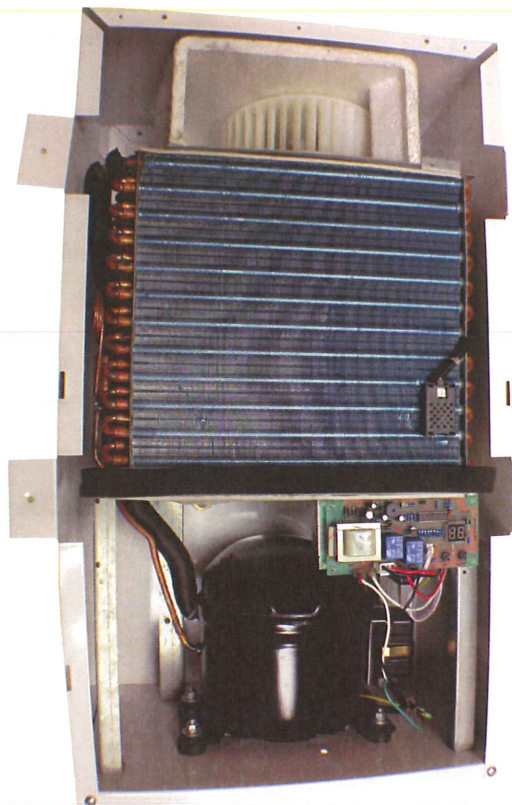


# Innovative Dehumidifier IW-25-1 In-Wall Dehumidifier

## Specification Submittal Data Sheet



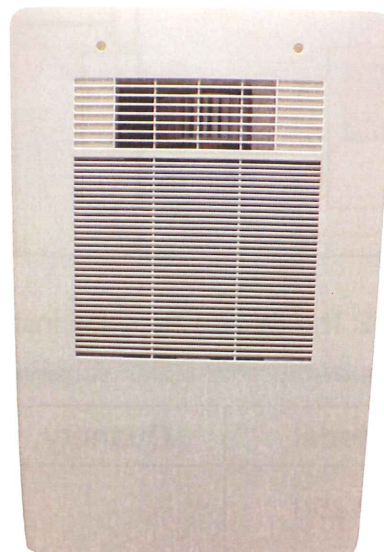
The IW-25-1, In-Wall Dehumidifier by Innovative Dehumidifier Systems is the first compact, self-contained dehumidifier designed to fit between existing 16" O.C. wall studs to control relative humidity (RH) independent of existing mechanical equipment. The unit removes up to 25 pints per day making it ideal for interior spaces up to approximately 1500 square feet.

With sound levels less than 47 dbA, the IW-25-1 operates quietly and efficiently to eliminate excessive internal moisture generated by occupant activities and compounded by tighter construction practices and increased energy code requirements. Since the humidistat is mounted behind a grille cover with tamper-proof screws a property owner or manager can control interior humidity levels regardless of tenant lifestyle or improper mechanical system sizing or usage.

Warranty:  
2 Year Limited Warranty on Parts

Part Number .....	IW-25-1
Rated Average Power Consumption (at 80°F, 60% R.H.) .....	370W
Max Power Consumption (at 90°F, 95 R.H.) .....	450 W
Max Absorbed Current (at 80°F, 60% R.H.) F.L.A. ....	3.9A
Locked Rotor Current L.R.A .....	14.0A
Air Flow (with Clean Air Filter) .....	150CFM
Second Pressure Level (at 3 MTS In Free Field) .....	<47dbA
Refrigerant R134A .....	190G
Defrosting Control System .....	Electrical
Drain Connection .....	1/2" Hose
Functioning Temperature Range .....	50-90°F
Functioning Relative Humidity Range .....	35-95%
Rated Condensation Capacity (at 80°F - 60% R.H.) .....	25ppd
Weight .....	35lbs
Grill/Cover Dimensions WXHXD .....	17.2" X 27.2" X .5"
Rough Opening Dimensions WXHXD .....	14.5" X 25.5" X 9.38"

Specifications subject to change without notice

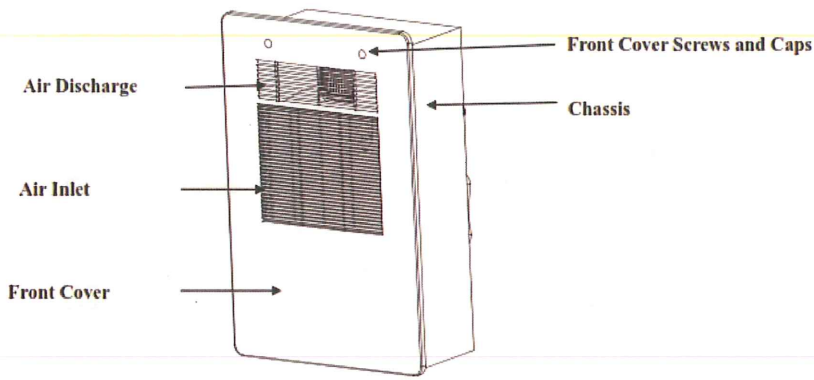


[www.innovatedehu.com](http://www.innovatedehu.com)

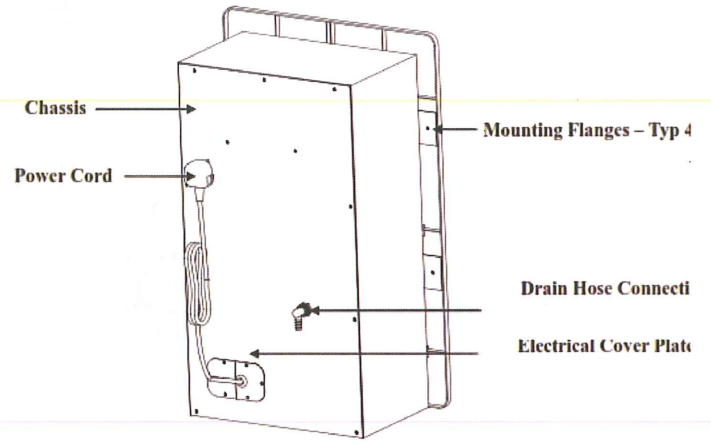
6260 Ocean Hwy West,  
Ocean Isle Beach, NC 28469

(910) 579-3348

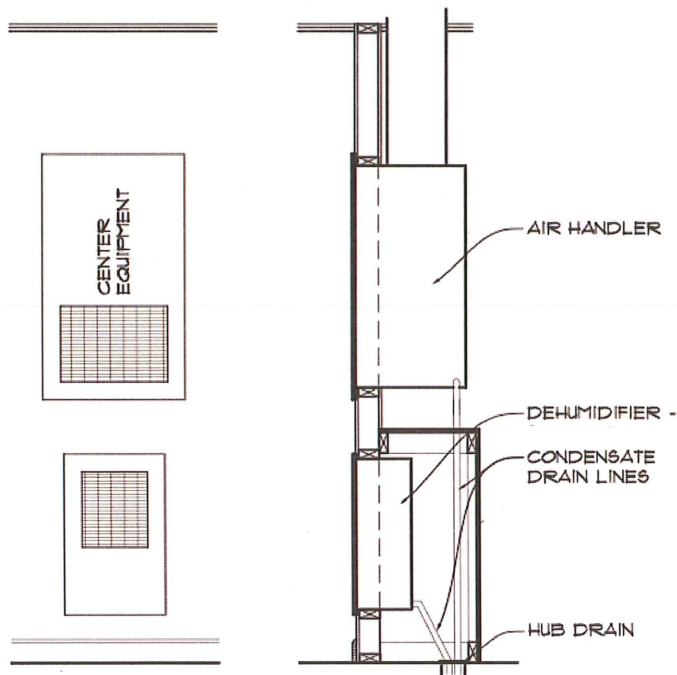
### Front View



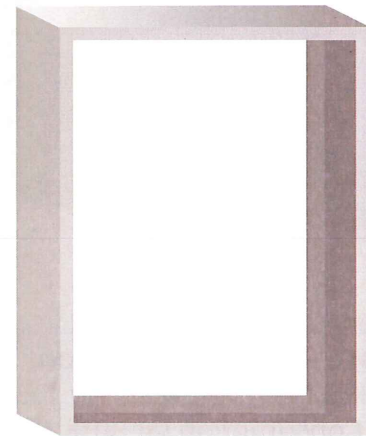
### Rear View



## EXAMPLE OF A TYPICAL INSTALLATION



## OPTIONAL ACCESSORY: Surface Mounting Box



Dimensions  
26 1/2"H x 17 1/4"W x 11"D

NOTE: The IW-25-1 may be installed at any height, the above example is for illustrative purposes only.

Model	Quantity	Comments	Project:
IW-25-1			Location :
			Architect :
			Engineer :
			Contractor :
			Submitted by :
			Date :