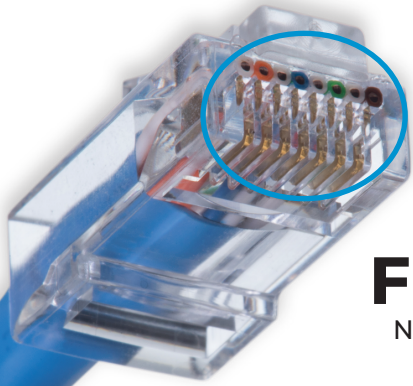
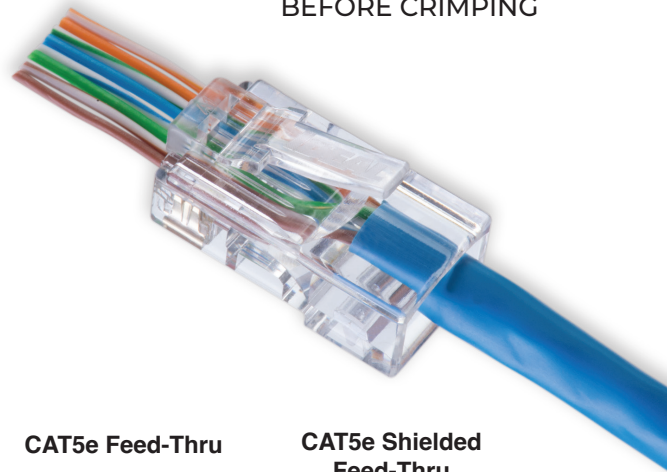


FEED-THRU CONNECTORS

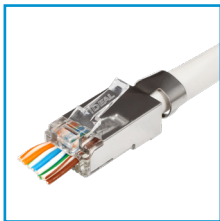
VERIFY
CONDUCTOR ORDER
BEFORE CRIMPING



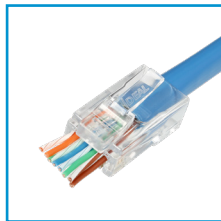
FLUSH CUT
NO EXCESS CONDUCTOR



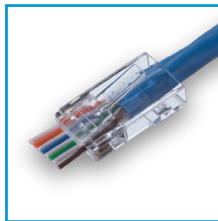
Large Diameter
CAT6A/6/5e
Shielded



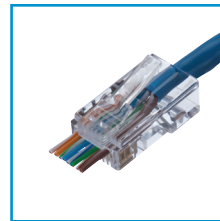
Large Diameter
CAT6A/6/5e
Unshielded



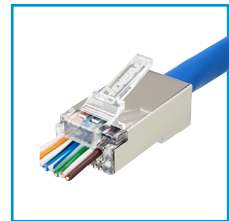
CAT6 Feed-Thru



CAT5e Feed-Thru



CAT5e Shielded
Feed-Thru



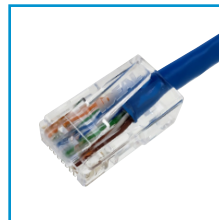
CAT6 Standard
Single Piece



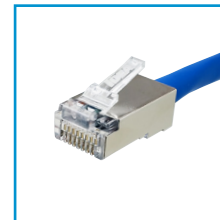
CAT6 Standard
3-Piece



CAT5e Standard



CAT5e Standard
Shielded



33-509
Feed-Thru
Starter Kit



33-510
Twisted Pair/Coax
Termination & Test Kit



SIMPLIFIED MODULAR PLUG TERMINATIONS

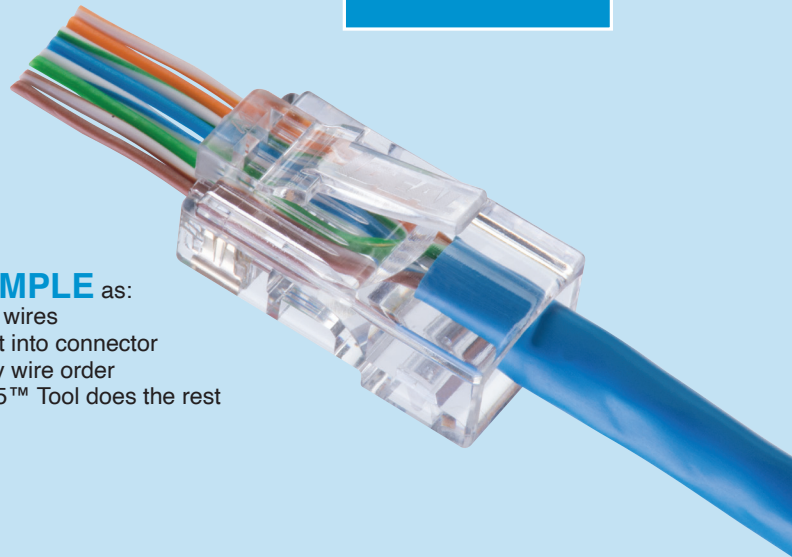


The IDEAL® Feed-Thru RJ-45 Modular Plugs and FT-45™ Crimping Tool are designed to simplify and improve the consistency of cable to connector termination of CAT5e through CAT6A connectors to twisted pair cables.

This system makes it **SIMPLE**

- No more wasted materials
- No more wasted labor
- No sleds or liners

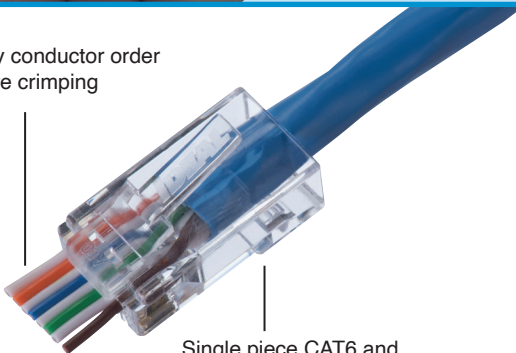
SIMPLE



As **SIMPLE** as:

- Align wires
- Insert into connector
- Verify wire order
- FT-45™ Tool does the rest

Verify conductor order before crimping



Single piece CAT6 and CAT6A/6 connectors. Same preparation as CAT5e connector.

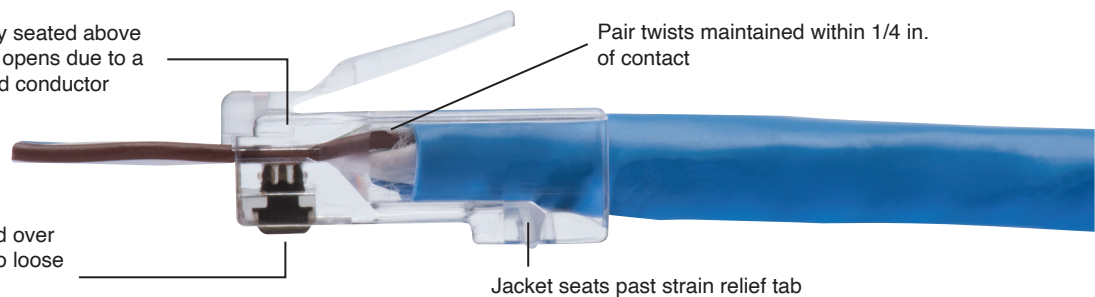
Feed-Thru Modular Plugs

Open-end Feed-Thru connectors offer several advantages over standard closed end connectors. Conductor order can be verified prior to crimping. Conductors that feed-thru the connector are inserted far enough to be pierced by the pin below. The cable can be pushed or pulled into the connector to ensure that the twisted pairs are as close to the pin contacts as possible and that the jacket is seated beyond the primary strain relief for a secure connection. A patented design enables conductors to be cut flush with the end face of the connector when used with the FT-45™ tool. CAT5e, CAT6 and CAT6A connectors are all single piece connectors that use the same assembly process, no special assembly or multiple pieces for CAT6 or CAT6A.

Conductors fully seated above pin contact. No opens due to a short/misaligned conductor

Pair twists maintained within 1/4 in. of contact

3 pin IDC contact, 50μ gold plated over 150μ nickel. Secured in place - no loose pins in the package.

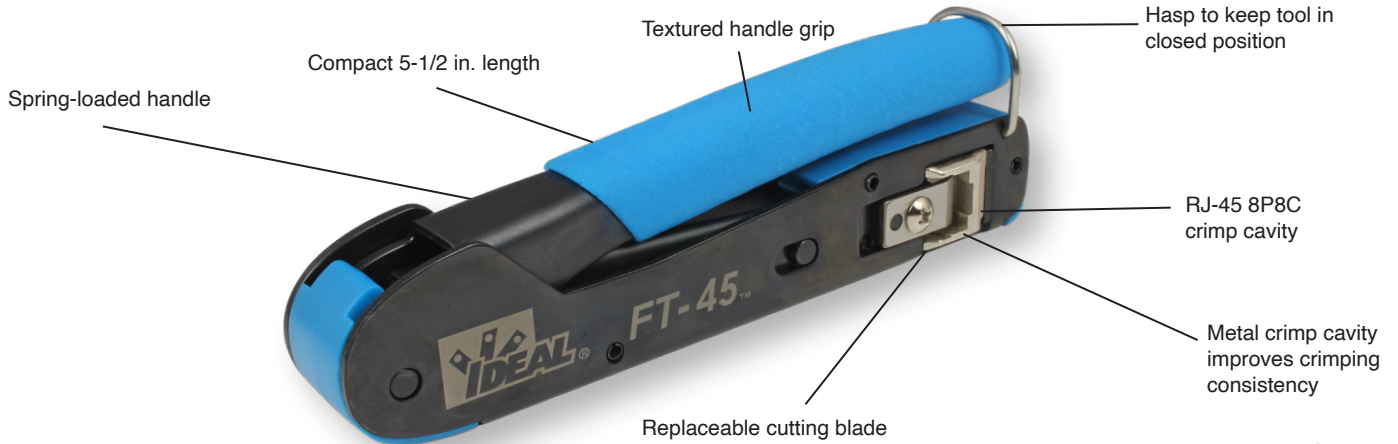


Jacket seats past strain relief tab

Patent Nos: 10,535,969; D824739; D824740; D829178; D829166; D829667

FT-45™ Modular Plug Crimp Tool

Don't let its size fool you. The FT-45™ is a simple, compact and highly effective crimp tool for installers and techs that terminate RJ-45 connectors regularly. Instead of another traditional oversized, heavy, crimp tool style loaded with features that are rarely used or that just don't work well, we took this tool in a new direction. It's built for today and tomorrow, not the past. A single crimp cavity for RJ-45 / 8-position connectors that can be used with Feed-Thru, standard, or shielded connectors for CAT5e through CAT6A. A custom, heavy duty cutting blade that will last for over 2,000 cuts. A mechanical design that requires only 1/3 to 1/2 the hand force of traditional tools to crimp the connector - no ratchet mechanism is needed and one handed crimping is possible. The tool is compact, 5-1/2" in length and weighs just over 1/2 lb., about half the size and weight of bulkier traditional tools. Easily fits in your pocket and lightens the tool bag load. It packs a punch, and does exactly what it's supposed to do.



Flush Cut

During crimping, the FT-45™ cleanly shears the excess conductors and leaves a smooth, flat finish to the end face of the connector. No protrusions or small lengths of conductor remain beyond the plastic face of the connector. This minimizes accidental shorting of conductors or inadvertent contact in plug jacks.



FT-45™ is Compatible with CAT5e/CAT6/CAT6A

Feed-Thru Connectors



Standard RJ-45 Connectors



Shielded Connectors



Large Diameter CAT6A/6/5e



CAT5e



CAT6



MODULAR PLUG INSTALLATION SOLUTIONS

CAT6A/6/5e Shielded and Unshielded Feed-Thru for Large Diameter Conductors

The IDEAL family of Feed-Thru products has expanded. Shielded or unshielded, these single-piece 8P8C RJ-45 connectors are designed to work with cable conductors ranging from 22 to 24 AWG solid with an overall diameter of 0.040" - 0.048" per conductor. The single-piece Feed-Thru design simplifies the challenges faced when assembling and terminating twisted pair cables with larger diameter conductors, over 0.041", when the use of a standard in-line connector is not an option.

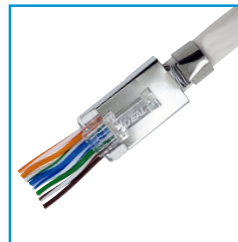
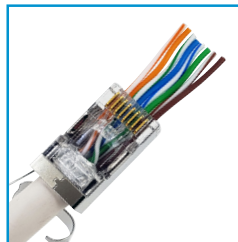
A unique staggered conductor hole layout and multi-length contact pins are incorporated to accommodate the larger conductors. The single-piece housing design helps to funnel the conductors through the connector and out of the Feed-Thru end. No precision length trimming, load bars, or multi-piece assemblies are required. These connectors are then terminated with the FT-45™ Modular Plug Crimp Tool which does not require any adjustments or blade changes.

The shielded connector is designed for 0.040" through 0.048" insulated conductors which are typically found in CAT6A, CAT6, and CAT5e shielded cables. The unshielded connector handles the same range but is used primarily for CAT6A and thicker CAT6 unshielded cables. For twisted pair cables with maximum conductor diameters of 0.41" or less, we recommend using the in-line versions of our CAT5e or CAT6 Feed-Thru connectors.

Shield continuity can be made internally by folding the cable foil over the jacket and contacting the inside of the connector walls or externally by wrapping the cable drain wire around the base of the jacket strain relief clip.

The jacket strain relief clip (shielded model) is pre-positioned in the up position, so cable insertion is simplified. The pre-formed clip can be closed and crimped with standard needle nose or plier-nose device like the IDEAL® 33-719 or other IDEAL® T®-Stripper Wire Strippers.

Pin contacts are a 3-prong design and have 50u" gold-plated contact areas. Both plugs are UL Listed. The FT-45™ crimp tool, (IDEAL® 30-495) is required to properly terminate these connectors.



Datacom Kits

Not only do we have great tools and connectors, we have also carefully put together 4 bundles for your convenience and added value.

33-507 – Feed-Thru RJ-45 Installation Hip Kit – Includes the necessary tools to cut, strip, and terminate RJ-45, 8P8C modular plugs to CAT5e, CAT6, and CAT6A twisted pair cables. Cut, with the included electrician's scissors for cutting old connector ends or trimming the cable and conductors to size. Strip with the PrepPRO® cable stripper which utilizes a fixed depth blade to score the jacket of twisted pair cables. Terminate with the FT-45™ compact crimp tool that provides a flush cut on IDEAL® Feed-Thru Modular Plugs and works with standard (non-Feed-Thru) and shielded IDEAL® connectors.

33-508 – Twisted Pair Termination Hip Kit – Includes everything the 33-507 has but also includes the Punchmaster™ Punch Down Tool with 110 and 66 blades for terminating modular jacks and panels.

33-509 – FT-45™ Feed-Thru Starter Kit – Want to have all your tools and connectors in one place? If so, then this kit is for you. It includes Electrician's scissors to cut, a PrepPRO® cable stripper to strip, and an FT-45™ crimp tool to terminate CAT5e through CAT6A twisted pair cables. All within a plastic carrying case, you have these tools plus 25 strain relief boots, 50 CAT5e, and 50 CAT6 Feed-Thru Modular Plugs. Just grab and go.

33-510 – Twisted Pair & Coax Termination & Test Kit – Providing the most value for the money all within a heavy-duty tool bag which includes: Twisted Pair Termination Hip Kit, OmniSeal™ Pro XL Compression Hip Kit, 33-866 Test-Tone-Trace VDV Test Kit, CAT6 Feed-Thru Modular Plugs (100/Jar), RG-6 RTQ™ XR™ F-Compression Connectors (100/Jar)

33-507 Feed-Thru RJ-45 Installation Hip Kit



33-508 Twisted Pair Termination Hip Kit






33-509 Feed-Thru Starter Kit



33-510 Twisted Pair & Coax Termination & Test Kit



Modular Plugs

	Name	CAT	Type	Feed-Thru	Shielded	Notes	Quantity	Part No.
	CAT6A/6/5e Shielded Feed-Thru	Multi	RJ-45 8P8C	✓	✓	For shielded or unshielded CAT6A, CAT6 or CAT5e with insulated conductor diameter of 0.040" to 0.048", max. jacket diameter of .320"	Card of 10	85-363
							Card of 25	85-368
							Jar of 50	85-369
	CAT6A/6 0.048" Feed-Thru	6A/6	RJ-45 8P8C	✓		For unshielded CAT6A/6 with insulated conductor diameter of 0.040" to 0.048"; max jacket diameter of .320"	Card of 25	85-384
							Card of 50	85-385
	CAT6 Feed-Thru	6	RJ-45 8P8C	✓		For unshielded CAT6 with 23 or 24 AWG conductors with a max. insulated conductor diameter of 0.041", max. jacket diameter of .290"	Card of 25	85-375
							Card of 50	85-376
							Bag of 100	85-377
							Jar of 100	85-377J
	CAT6 Single Piece Standard	6	RJ-45 8P8C			For unshielded CAT6 with 23 or 24 AWG conductors with a max. insulated conductor diameter of 0.041", max jacket diameter of .290"	Card of 25	85-367
							Card of 50	85-362
							Jar of 100	86-367J
	CAT6 3-Piece Standard	6	RJ-45 8P8C			3 piece assembly of body, sled and liner. For unshielded CAT6 with 23 or 24 AWG conductors with a max. insulated conductor diameter of 0.041", max. jacket diameter of .290"	Card of 25	85-366
	CAT5e Feed-Thru	5e	RJ-45 8P8C	✓		For unshielded CAT5e with 23 or 24 AWG conductors with a max. insulated conductor diameter of 0.041", max. jacket diameter of .270"	Card of 25	85-370
							Card of 50	85-371
							Bag of 100	85-372
							Jar of 100	85-372J
	CAT5e Shielded Feed-Thru	5e	RJ-45 8P8C	✓	✓	For shielded CAT5e with 24 AWG conductors with a max. insulated conductor diameter of 0.041", max. jacket diameter of .270"	Card of 25	85-365
	CAT5e Shielded	5e	RJ-45 8P8C		✓	For shielded CAT5e with 24 AWG conductors with a max. insulated conductor diameter of 0.041", max. jacket diameter of .270"	Card of 25	85-361
	CAT5e Standard	5e	RJ-45 8P8C			For unshielded CAT5e with 23 or 24 AWG conductors with a max. insulated conductor diameter of 0.041", max. jacket diameter of .270"	Card of 10	85-147
							Card of 15*	85-379
							Card of 25	85-346
							Card of 50	85-396
							Bag of 100	86-396
							Jar of 100	86-396J
	Snagless Strain Relief Boot	5e/6	RJ-45 8P8C			Blue color, slide on snagless boot, max. cable diameter of 5.5mm/.225"	Card of 25	85-380
	6-Contact Voice Plug	3	RJ-11/12 6P6C			6-position, 6-contact voice grade modular plug, max. 24 AWG conductors	Card of 25	85-345
	4-Contact Voice Plug	3	RJ-11 6P4C			6-position, 4-contact voice grade modular plug, max. 24 AWG conductors	Card of 25	85-344

*Includes 15 Strain Relief Boots



Jar Options for Modular Plugs

Resealable jars of 100 pieces. Includes FREE jacket Stripper.

CAT6 Feed-Thru	85-377J
CAT5e Feed-Thru	85-372J
CAT6 Single Piece Standard	86-367J
CAT5e Standard	86-396J



Modular Plug Termination and Prep Tools

 <p>FT-45™ Feed-Thru Modular Plug Crimp Tool 30-495 FT-45™ Replacement Blade 30-4951</p>	 <p>Twisted Pair Termination Hip Kit 33-508</p>	 <p>Feed-Thru RJ-45 Installation Hip Kit 33-507</p>
 <p>Ratchet Telemaster™ Modular Plug Crimper 30-696</p>	 <p>Telemaster™ Modular Plug Crimper 30-496 Telemaster Starter Kit 33-700</p>	 <p>Data/Voice Modular Plug Crimp Kit 33-396</p>
 <p>PrepPRO® UTP/Coax Cable Stripper 45-605</p>	 <p>Adjustable Ringer Jacket Stripper 45-165</p>	 <p>Electrician's Scissors 35-088</p>

Connector & Tool Compatibility Chart

IDEAL CONNECTOR	30-495 FT-45™	30-696 Ratchet Telemaster™	30-496 Telemaster™	33-396 Data/Voice Crimper
CAT6A/6/5e Shielded Feed-Thru RJ-45	■			
CAT6A/6 Unshielded Feed-Thru RJ-45	■			
CAT6 Feed-Thru RJ-45	■			
CAT6 Single Piece Standard RJ-45	■	■	■	■
CAT6 3-Piece Standard RJ-45	■	■	■	■
CAT5e Feed-Thru RJ-45	■			
CAT5e Shielded RJ-45	■	■	■	■
CAT5e Shielded Feed-Thru RJ-45	■			
CAT5e Standard RJ-45	■	■	■	■
RJ-11/12 Voice Plug		■	■	■
RJ-11 Voice Plug		■	■	■

