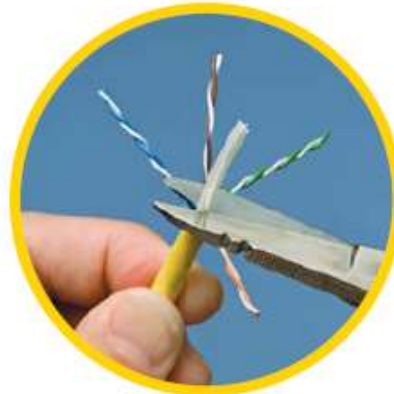


## Instructions for Installing 85-366 CAT 6 RJ-45 Modular Plugs



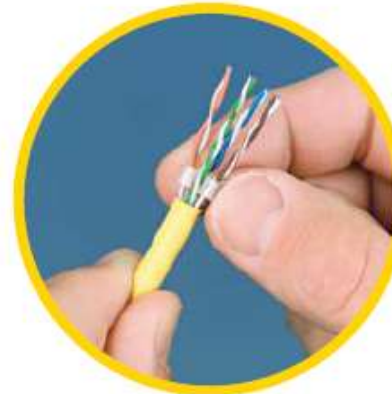
**STEP 1**

Strip and remove 4" of jacket.



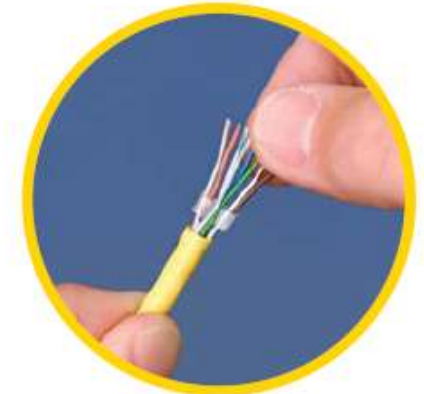
**STEP 2**

Trim cable cross member.



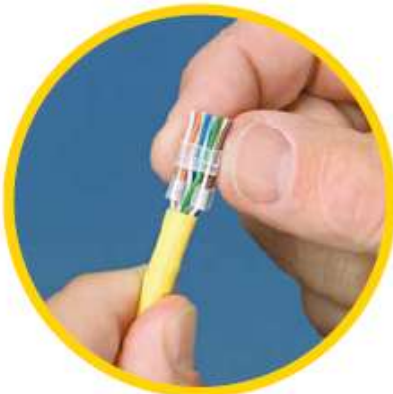
**STEP 3**

Slide sled over pairs.



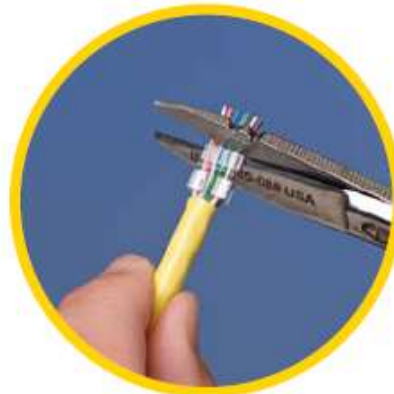
**STEP 4**

Untwist and order pairs.



**STEP 5**

Slide into liner.



**STEP 6**

Trim.



**STEP 7**

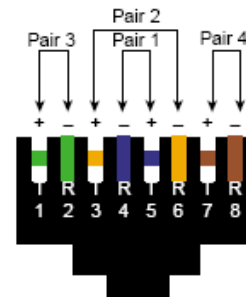
Slide assembly into plug body.



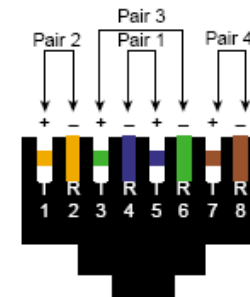
**STEP 8**

Crimp.

**Standard Wiring Diagram for inserting the wires into the modular plug with the tab facing down**



**T568-A**



**T568B (AT&T)**