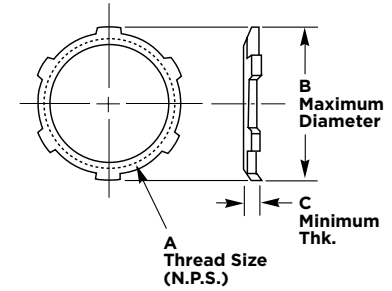


Thread Locknuts

NPT Thread Locknuts

Zinc-Plated Steel

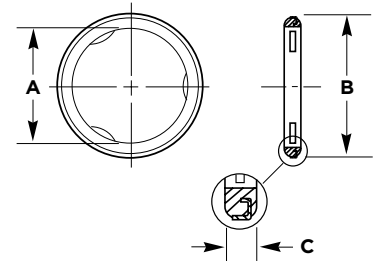
NPT Hub Size	A Inside Diameter		B Outside Dia.		C Thickness		Steel Catalog Number
	Inches	(mm)	Inches	(mm)	Inches	(mm)	
1/2	1/2"-14		1.14"	(29.0)	.09"	(2.3)	00322001LPK50
3/4	3/4"-14		1.43"	(36.3)	.11"	(2.8)	00322002LPK50
1	1"-11-1/2		1.77"	(45.0)	.13"	(3.3)	00322003LPK50
1-1/4	1-1/4"-11-1/2		2.28"	(57.9)	.13"	(3.3)	00322004LPK50
1-1/2	1-1/2"-11-1/2		2.60"	(66.0)	.13"	(3.3)	00322005LPK50



Metal Clad Sealing O-Rings - Sizes 1/2 - 4

Zinc-Plated Steel with Neoprene Ring

NPT Hub Size	A Inside Diameter		B Outside Dia.		C Thickness		Catalog Number
	Inches	(mm)	Inches	(mm)	Inches	(mm)	
1/2	.80"	(20.3)	1.08"	(27.4)	.16"	(3.2)	20509001
3/4	1.00"	(25.4)	1.34"	(34.0)	.16"	(3.2)	20509002
1	1.25"	(31.6)	1.63"	(41.4)	.16"	(3.2)	20509003
1-1/4	1.61"	(40.9)	2.00"	(50.8)	.16"	(3.2)	20509004
1-1/2	1.84"	(46.7)	2.36"	(59.9)	.16"	(3.2)	20509005
2	2.31"	(58.7)	2.83"	(71.9)	.16"	(3.2)	20509006

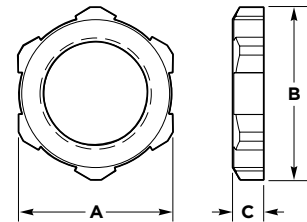


Chrome Plated Steel with Neoprene Ring

2-1/2	2.91"	(73.9)	3.44"	(87.4)	.24"	(6.1)	20509007
3	3.52"	(89.4)	4.08"	(103.6)	.24"	(6.1)	20509008

Nylon PG Thread Locknuts

PG Thread Size	A Inches	(mm)	B Inches	(mm)	C Inches	(mm)	Catalog Number
PG7	.75"	(19.1)	.80"	(20.3)	.22"	(5.6)	LNP7BPK100
PG9	.86"	(21.8)	.91"	(23.2)	.22"	(5.6)	LNP9BPK100
PG11	.94"	(23.9)	1.03"	(26.2)	.22"	(5.6)	LNP11BPK100
PG13.5	1.06"	(26.9)	1.14"	(29.0)	.24"	(6.1)	LNP13BPK100
PG16	1.18"	(30.0)	1.30"	(33.0)	.25"	(6.1)	LNP16BPK100
PG21	1.41"	(35.8)	1.54"	(39.1)	.25"	(6.1)	LNP21BPK100
PG29	1.81"	(46.0)	2.00"	(50.8)	.25"	(6.1)	LNP29BPK25
PG36	2.24"	(56.9)	2.50"	(63.5)	.25"	(6.1)	LNP36BPK25



Nylon Metric Thread Locknuts

PG Thread Size	A Inches	(mm)	B Inches	(mm)	C Inches	(mm)	Catalog Number
M12	.75"	(19.1)	.82"	(20.8)	.22"	(5.6)	LNM12BPK100
M16	.87"	(22.09)	.98"	(25.0)	.22"	(5.6)	LNM16BPK100
M20	1.06"	(27.0)	1.18"	(30.0)	.25"	(6.4)	LNM20BPK100
M25	1.38"	(35.1)	1.54"	(39.1)	.28"	(7.1)	LNM25BPK100
M32	1.61"	(40.9)	1.80"	(45.7)	.28"	(7.1)	LNM32BPK100
M40	1.97"	(50.0)	2.18"	(55.4)	.28"	(7.1)	LNM40BPK100

Dimensions in Inches (mm)