

Products & Solutions Guide



About Us

Carlisle HVAC Brands produces industry-leading solutions that equip HVAC systems to perform at peak efficiency every day, all day, even in tough conditions.

Our energy-efficient products promote sustainability by forming airtight seals around ductwork and ensuring proper air exchange throughout the facility, which are critical for optimal HVAC performance, energy efficiency, occupant health, and indoor comfort.

Backed by exceptional product innovation and customer service, Carlisle offers a comprehensive portfolio of HVAC solutions, including:

- **Hardcast® Duct Sealants, Adhesives and Coatings**

Since 1965, **Hardcast** duct sealants, adhesives and coatings have been formulated and tested to meet and exceed the most rigorous industry standards, helping us become the largest U.S. sealant manufacturer. Our sealant formulations include UL listing, UL GREENGUARD Gold certification, and Low or True Zero VOC.

- **Gripnail® Duct Insulation Fastening Systems**

Since 1966, **Gripnail** has led the market with superior weld pins and highly dependable insulation fastening equipment engineered for smooth, efficient operation.

- **DynAir Duct Airflow Hardware and Accessories**

For more than 40 years, **DynAir** has manufactured high quality airflow duct hardware to promote fast, easy installation and reliable performance.

Carlisle HVAC Brands are trusted by contractors for their proven performance, award-winning industry recognition, and reliable warranty coverage.



Our heritage supercharges our innovation.

Spotlight

Improving Indoor Air Quality (IAQ) and Energy Efficiency

A properly sealed and well-functioning HVAC duct system can significantly improve indoor air quality by removing heating and cooling inconsistencies throughout a building. Sealants must also perform for the life of the duct and must not grow or support mold. Hardcast® water and solvent-based sealants from Carlisle HVAC are below SCAQMD requirements, below the LEED limit, and qualify for LEED credit contribution. All Hardcast sealants are guaranteed to perform. Our formulations include U.L. listing, U.L. GREENGUARD Gold certification, True Zero VOC content and 10 Year Warranties.

In addition, our airflow hardware (DynAir) are engineered to exceed the latest International Energy Conservation Code® and International Mechanical Code® requirements.

Not only do HVAC systems play a role in occupant comfort and indoor air quality, but they also account for nearly 40% of the energy consumed by buildings in the United States. When 77% of the electricity we consume goes just to operate the buildings we live and work in every day, it becomes more important than ever that a properly sealed and functioning ductwork system can help save energy and reduce costs.

Carlisle HVAC takes pride in manufacturing high quality, environmentally friendly products. As an industry leader and pioneer, we offer an extensive line of high-performance solutions specifically designed to enhance indoor air quality, provide optimal thermal comfort and energy efficiency. This product and solutions guide represents the breadth of our portfolio but is not fully exhaustive. Please contact us if you do not see what you are looking for, or with any other questions.

Sealant Specification/Standards Compliance

Property	Method	Results
Freeze Thaw & Heat Cycling	ASTM C731	Pass
Slump Test	ASTM D2202	Pass
VOC Limitation	SCAQMD Rule 1168	Pass
Compounds for use in Construction of Federally Inspected Meat & Poultry Plants	FSIS	Pass
Acceptable Indoor Air Concentrations	Michigan Department of Quality Criteria (Part 201/213)	Pass
City of Los Angeles Approval RR #8069		Pass
Interior Finishes U.S. Coast Guard	46 CFR 164.012	Approved

Industry-Leading HVAC Solutions: Engineered to Perform. Certified to Protect.



Foil-Sealant Duct Sealing System Warranty

The Hardcast Foil-Sealant Duct Sealing System, a system that reduces ductwork air leakage, energy loss and moisture intrusion, is a combination of rolled sealant and mastic. When properly installed, the Hardcast Foil-Sealant Duct Sealing System is eligible for a 10-year material only warranty. This system includes Hardcast's Iron-Grip 601, Spray-Seal or Versa-Grip 181 liquid mastic sealant. Once the liquid sealant has cured completely; the mastic is overlaid with a 4" wide strip of AFT-701 rolled sealant. This non-cracking, flexible, UV resistant Foil-Sealant Duct Sealing System will help meet the ASHRAE 90.1 2012 Duct Construction Handbook requirement of less than 2% air leakage on outside supply, return and exhaust ductwork for years to come if properly installed, maintained and used for the purpose intended by Hardcast.

Liquid Sealants & Accessories

Designed to seal the inside and outside of ductwork, industry-leading water and solvent based liquid sealants from Hardcast® provide long-lasting performance. These sealants are either fiber reinforced or non-reinforced. All water-based sealants are GREENGUARD Gold and fully UL-181 A-M and/or UL-181 B-M certified. Made in the USA.



BEST

Iron-Grip® 601

Water-based, heavy texture, UL 181B-M, up to 20" w.c., USCG approval, enhanced mold/mildew properties, enhanced UV resistance.

Part Numbers:

- 304137 | 1 Case w/ (25) 11-oz. Cartridges (Gray)
- 304135 | 1 Case w/ (4) 1-Gallon Pails (Gray)



BEST

Sure-Grip™ 404

Solvent-based, synthetic-rubber, up to 20" w.c.

Part Numbers:

- 302014 | 1 Case w/ (25) 11-oz. Cartridges (Gray)
- 302009 | 1 Case w/ (4) 1-Gallon Pails (Gray)



BEST

Versa-Grip™ 102

Water-based, heavy texture, fiber-reinforced, UL 181A-M & UL 181B-M, up to 20" w.c., enhanced mold/mildew properties, enhanced UV resistance.

Part Numbers:

- 304152 | 1 Case w/ (25) 11-oz. Cartridges (White)
- 304153 | 1 Case w/ (4) 1-Gallon Pails (White)
- 304155 | (1) 2-Gallon Pail (White)



BETTER

Flex-Grip™ 550

Water-based, heavy texture, UL 181B-M, up to 16" w.c., mold/mildew properties, excellent UV resistance.

Part Numbers:

- 304134 | 1 Case w/ (25) 11-oz. Cartridges (Gray)
- 304132 | 1 Case w/ (4) 1-Gallon Pails (Gray)



BETTER

Versa-Grip™ 181

Water-based, heavy texture, fiber-reinforced, UL 181A-M & UL 181B-M, up to 20" w.c., mold/mildew properties, enhanced UV resistance.

Part Numbers:

- 305056 | 1 Case w/ (25) 11-oz. Cartridges (Gray)
- 305057 | 1 Case w/ (4) 1-Gallon Pails (Gray)
- 304141 | 1 Case w/ (25) 11-oz. Cartridges (White)
- 304138 | 1 Case w/ (4) 1-Gallon Pails (White)
- 304139 | (1) 2-Gallon Pail (White)



GOOD

Duct-Seal™ 321

Water-based, smooth, fiber-reinforced, UL 181B-M, up to 20" w.c., enhanced mold/mildew properties, enhanced UV resistance.

Part Numbers:

- 304159 | 1 Case w/ (25) 11-oz. Cartridges (Gray)
- 304156 | 1 Case w/ (4) 1-Gallon Pails (Gray)
- 304158 | (1) 5-Gallon Pail (Gray)
- 332926 | 1 Case w/ (4) 1-Gallon Pails (White)



Liquid Sealants & Accessories

GOOD



CCWI-181™

Water-based, heavy texture, fiber-reinforced, UL 181A-M & UL 181B-M, up to 16" w.c., mold/mildew properties, excellent UV resistance.

Part Numbers:

340294	1 Case w/ (4) 1-Gallon Pails (Black)	304142	1 Case w/ (25) 11-oz. Cartridges (White)
304146	1 Case w/ (25) 11-oz. Cartridges (Gray)	304144	1 Case w/ (4) 1-Gallon Pails (White)
304148	1 Case w/ (4) 1-Gallon Pails (Gray)	304143	(1) 2-Gallon Pail (White)
304147	(1) 2-Gallon Pail (Gray)	304145	(1) 5-Gallon Pail (White)



BEST



Spray-Seal™

Water-based, spray-applied, 500% elongation, labor and cost savings up to 50%.

Part Numbers:

304133	(1) 5-Gallon Pail (Gray)
305437	(1) 50-Gallon Drum (Gray)



BETTER



Flex-Grip™ 550 Spray Grade

Water-based, spray-applied, labor and cost savings up to 50%.

Part Numbers:

316207	(1) 50-Gallon Drum (Gray)
--------	---------------------------



AB-151 Scrim

All-purpose, self-adhering fiberglass ductwork scrim.

Part Numbers:

310553	1 Case w/ (24) 3" x 150' Rolls
--------	--------------------------------



Multi-Purpose Silicone Sealants

Multi-purpose silicone sealant for a wide variety of industrial sealing and adhesive applications.

Part Numbers:

309980	1 Case w/ (12) 10.1-oz. Cartridges (Aluminum)
309982	1 Case w/ (12) 10.1-oz. Cartridges (Clear)
309981	1 Case w/ (12) 10.1-oz. Cartridges (White)

Also available High-Temp Silicone Sealant:

Part Numbers:

309983	1 Case w/ (12) 10.1-oz. Cartridges (Red)
--------	--



Cartridge Killer™ Extrusion Gun

Applicator to apply a fine bead of duct sealant to boots, wyes, and other fittings.

Part Numbers:

325327	Cartridge Killer Extrusion Kit
--------	--------------------------------



Paint Brushes

2"-wide, multi-purpose paint brushes.

Part Numbers:

304288	1 Case w/ (24) 2" Paint Brushes
357760	1 Case w/ (12) 2" T-Rex Long-Angled Paint Brushes



Mobile Sealant Delivery Systems

Sealant delivery systems for field use.

Part Numbers:

321400	Standard Mobile Sealant Delivery System
315904	Deluxe Mobile Sealant Delivery System



Soudaseal Metalbond

Solvent-free, moisture-curing, high-quality single component HVAC duct sealant.

Part Numbers:

310535	(1) 1-Gallon Pail
--------	-------------------

Rolled Sealants & Accessories

Foil-backed, pressure sensitive, True Zero VOC, rolled mastic sealants from Hardcast® provide superior tack and an airtight seal on galvanized metal, flex duct, PVC coated pipe, coated ductwork. Our code approved rolls with foil facer/butyl adhesive composite, provide excellent UV and water resistance. Made in the USA.



Foil-Grip™ 1404-181BFX

UL 181B-FX listed, pressure-sensitive, 17-mil thick rolled mastic sealant*.

Part Numbers:

- 325803 | 1 Case w/ (24) 2" x 100' Rolls (Printed)
- 329474 | 1 Case w/ (16) 3" x 10M (33 ft.) Rolls (Printed)
- 325804 | 1 Case w/ (16) 3" x 100' Rolls (Printed)
- 325805 | 1 Case w/ (12) 4" x 100' Rolls (Printed)



Foil-Grip™ 1403-181BFX

UL 181B-FX listed, pressure-sensitive, 40-year cycle, 17-mil thick duct joint and general-purpose rolled sealant*.

Part Numbers:

- 309781 | 1 Case w/ (24) 2" x 100' Rolls (Printed)
- 333133 | 1 Case w/ (16) 3" x 10M (33 ft.) Rolls (Printed)
- 309780 | 1 Case w/ (16) 3" x 100' Rolls (Printed)



Foil-Grip™ 1402

UL classified, pressure-sensitive, 40-year cycle, 17-mil thick duct joint and general-purpose rolled mastic sealant. Available with either printed or unprinted foil facer.

Part Numbers:

- 304093 | 1 Case w/ (24) 2" x 100' Rolls (Unprinted)
- 304094 | 1 Case w/ (16) 3" x 100' Rolls (Unprinted)
- 304095 | 1 Case w/ (12) 4" x 100' Rolls (Unprinted)
- 304096 | 1 Case w/ (8) 6" x 100' Rolls (Unprinted)
- 304083 | (1) 36" x 100' Roll (Unprinted)
- 304099 | 1 Case w/ (24) 2" x 100' Rolls (Printed)
- 329473 | 1 Case w/ (16) 3" x 10M (33 ft.) Rolls (Printed)
- 304100 | 1 Case w/ (16) 3" x 100' Rolls (Printed)



Aluma-Grip™ AFT-701

Heavy-duty, pressure-sensitive, 40-year cycle, 30-mil thick duct joint rolled sealant.

Part Numbers:

- 304078 | 1 Case w/ (24) 2" x 50' Rolls (Unprinted)
- 304079 | 1 Case w/ (16) 3" x 50' Rolls (Unprinted)
- 304080 | 1 Case w/ (12) 4" x 50' Rolls (Unprinted)
- 304081 | 1 Case w/ (8) 6" x 50' Rolls (Unprinted)
- 304082 | 1 Case w/ (4) 9" x 50' Rolls (Unprinted)
- 304077 | 1 Case w/ (4) 12" x 50' Rolls (Unprinted)

*Made in Weesp, Holland

Construction/Specialty Tapes & Accessories

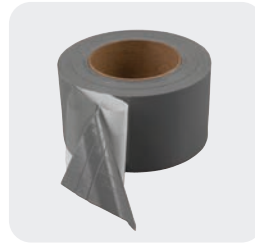


All-Purpose 1602

Pressure-sensitive, duct joint and general-purpose rolled sealant with a white fabric facer.

Part Numbers:

304086	1 Case w/ (24) 2" x 50' Rolls
304087	1 Case w/ (16) 3" x 50' Rolls
304088	1 Case w/ (12) 4" x 50' Rolls
304089	1 Case w/ (8) 6" x 50' Rolls
304085	1 Case w/ (4) 12" x 50' Rolls



TGM-3300

Double-sided adhesive consisting of butyl-based material sandwiched between two release liners.

Part Numbers:

304259	1 Case w/ (24) 2" x 50' Rolls
304260	1 Case w/ (16) 3" x 50' Rolls
304262	1 Case w/ (8) 6" x 50' Rolls
304983	1 Case w/ (4) 12" x 50' Rolls



TPO-2265

Butyl-based material with TPO facer.

Part Numbers:

310684	1 Case w/ (24) 2" x 75' Rolls
310685	1 Case w/ (16) 3" x 75' Rolls
310686	1 Case w/ (12) 4" x 75' Rolls
310687	1 Case w/ (8) 6" x 75' Rolls



TPO Line Set Wrap

Consists of a 6.5 mil TPO membrane laminated to a butyl-adhesive sealant to form a 22 mil composite to cover the line set pipe wrap insulation. Provides superior protection against damage from moisture, landscaping operations, equipment maintenance, and wind.

Part Numbers:

326380	1 Case w/ (8) 6" x 75' Rolls
326381	1 Case w/ (4) 9" x 75' Rolls



BRT-801

Black, U.V.-resistant hip and ridge sealant for under tile and roof applications.

Part Numbers:

304182	1 Case w/ (24) 2" x 50' Rolls
304183	1 Case w/ (16) 3" x 50' Rolls
304184	1 Case w/ (12) 4" x 50' Rolls
304185	1 Case w/ (8) 6" x 50' Rolls
304186	1 Case w/ (4) 9" x 50' Rolls
304181	1 Case w/ (4) 12" x 50' Rolls



FortiFlash® Butyl

Strong, tear-resistant, self-adhering barrier to protect through-wall penetrations from moisture intrusion. Ideal for HVAC contractors in residential new construction to seal off wall/roof penetrations for HVAC duct, exhaust, drains, and line sets.

Part Numbers:

359928	1 Case w/ (12) 4" x 75' Rolls (20 mils.)
--------	--



Rolled Sealant Squeegee

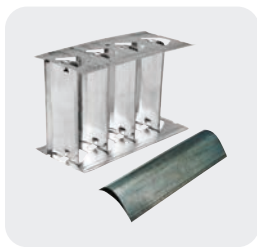
Smooths out wrinkles and bubbles that might form in the application of the rolled mastic sealant.

Part Numbers:

305600	1 Case w/ 25 Blue Squeegees
--------	-----------------------------

Duct Hardware & Accessories

Designed with occupants in mind, duct hardware from DynAir balances airflow effectively while reducing noise and vibration. We engineer our hardware with high quality materials and construction for long-lasting performance and efficiency; meeting and exceeding International Energy Conservation Code® and International Mechanical Code® requirements.



Hollow Vane & Push-On Rail

Snap-lock connection eliminates peening and welding and produces an extremely strong assembly. Nestable rail helps save money on shipping and is easy to store. Available in 2" and 4" nominal widths.

Part Numbers:

317321	1 Bundle w/ (10) 2" x 10' Jr. Hollow Vanes
317322	1 Bundle w/ (10) 2" x 10' Jr. Push-On Rails
317323	1 Bundle w/ (5) 4" x 10' Hollow Vanes
317324	1 Bundle w/ (10) 4" x 10' Push-On Rails

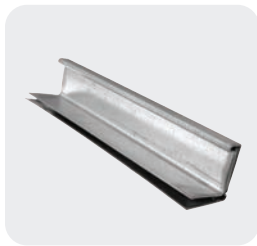


Dyn-O-Rail & Dyn-O-Rail Junior

Made with sturdy 23-gauge steel, embossed for stiffness, and can be used with either single or hollow vanes up to 16 gauge steel.

Part Numbers:

308088	(1) 100' Roll Dyn-O-Rail (4" nominal width)
308089	(2) 100' Rolls Dyn-O-Rail Junior (2" nominal width)
304639	Vane Setter Tool



J Flange

20GA G90 galvanized steel with hollow roll-formed section containing an integral sealant. The sealant has excellent adhesion to metal, is non-flow to 180 °F (82 °C), and retains its sealing properties indefinitely.

Part Numbers:

310497	(400) 10' Lengths
308846	(200) 12' Lengths



J Corner

14GA G90 galvanized steel flanged and embossed for additional strength. Square bolt hole for compatible carriage bolts allows field assembly with a single wrench. Corners are pre-punched with clearance and pilot hole for #10 sheet metal screws.

Part Numbers:

308259	1 Case w/ 200 Corners
--------	-----------------------



Cut Cleats

Manufactured with galvanized steel and designed to be used as a drive cleat or snap-on cleat. Interchangeable and can be used on DynAir J flange as well as shop fabricated TDC/TDF flanges.

Part Numbers:

308263	1 Case w/ (500) 4" Cut Cleats
310430	1 Case w/ (500) 6" Cut Cleats
332793	1 Case w/ (250) 6" Cut Cleats w/ Locking Darts
309640	1 Cleat Installation Tool



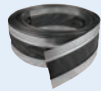
Multi-Matic™ TDC & TDF Corners

TDC/TDF corners designed for use in automatic insertion machines or hand assembly. Flanged and embossed to provide strength and rigidity. Square bolt hole for compatible carriage bolts allows field assembly with a single wrench. Corners are pre-punched to accommodate #10 sheet metal screws that can be used in place of bolts.

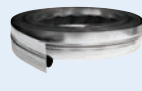
Part Numbers:

322704	1 Case w/ 250 TDC Corners
322705	1 Case w/ 4,000 TDC Corners
322706	1 Case w/ 250 TDF Corners

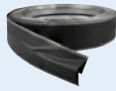
Packaging Options



Flat



Open



Closed

Duct Hardware & Accessories



Flexible Duct Connector 2"-3"-2" (Residential Quality - 28GA)

Flexible duct connector for residential applications. Made with 28GA G90 galvanized steel in a variety of fabrics.

Part Numbers:

307886	(1) 100' White Hypalon Roll, Closed
307889	(1) 100' Black Neoprene Roll, Closed
307892	(1) 100' Black Neoprene Roll, Open
307894	(1) 100' Gray Silicone Roll, Closed
307899	(1) 100' Black Vinylflex Roll, Closed
307902	(1) 100' Black Vinylflex Roll, Flat
307904	(1) 100' Black Vinylflex Roll, Open

Available in Canada:

307896 (1) 100' Yellow Vinylflex Roll, Closed



Flexible Duct Connector 3"-3"-3" (Commercial/Industrial Quality - 24GA)

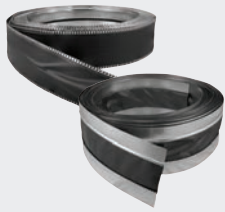
Heavy-duty flexible duct connector for industrial and commercial applications. Made with 24GA G90 galvanized steel in a variety of fabrics.

Part Numbers:

307831	(1) 100' White Hypalon Roll, Closed
307838	(1) 100' Black Neoprene Roll, Closed
307842	(1) 100' Black Neoprene Roll, Open
307843	(1) 100' Gray Silicone Roll, Closed
307851	(1) 100' Black Vinylflex Roll, Closed
307854	(1) 100' Black Vinylflex Roll, Open

Available in Canada:

307849 (1) 100' Yellow Vinylflex Roll, Closed



FabGuard Seam Connector

Made with G90 galvanized steel, available in a variety of fabrics with an extra fold in the seam to protect the fabric during operations.

Part Numbers:

307863	(1) Black Neoprene 2-4-2 28G Roll, Flat
307865	(1) Black Vinylflex 2-4-2 28G Roll, Flat
333146	(1) Black Vinylflex 2-4-2 30G Roll, Flat
307861	(1) Black Vinylflex 3-4-3 28G, Roll, Flat



Flexible Duct Connector 3"-3"-3" (Light Commercial Quality - 28GA)

Flexible duct connector for light commercial applications. Made with 28GA G90 galvanized steel in a variety of fabrics.

Part Numbers:

307872	(1) 100' Black Neoprene Roll, Closed
307881	(1) 100' Black Vinylflex Roll, Closed
307885	(1) 100' Black Vinylflex Roll, Open
336646	(1) 750' Black Vinylflex Roll, Open

Available in Canada:

307879 (1) 100' Yellow Vinylflex Roll, Closed



Flexible Duct Connector 3"-6"-3" (Super Commercial/Industrial Quality - 24GA)

Premium, heavy-duty flexible duct connector for applications that require a wider fabric to accommodate more movement or a larger offset in the connection points. Made with 24GA G90 galvanized steel in a variety of fabrics.

Part Numbers:

307905	(1) 100' White Hypalon Roll, Closed
307908	(1) 100' Black Neoprene Roll, Closed
307916	(1) 100' Black Vinylflex Roll, Closed



Flexible Duct Connector 4"-3"-4" or 4"-4"-4" (For Engel or Lockformer - 24GA)

For Engel or Lockformer machines. Premium, heavy-duty, manufactured connector for applications in which the connector is required to be run through an automatic flanging machine. Made with 24GA G90 galvanized steel in a variety of fabrics.

Part Numbers:

307823	(1) 100' White Hypalon 4-3-4 Roll, Closed
307824	(1) 100' Black Neoprene 4-3-4 Roll, Closed
307829	(1) 100' Black Vinylflex 4-3-4 Roll, Closed
307836	(1) 100' Black Neoprene 4-4-4 Roll, Closed
307837	(1) 100' Black Vinylflex 4-4-4 Roll, Open
336647	(1) 750' Black Vinylflex 4-4-4 Roll, Open

Available in Canada:

307828 (1) 100' Yellow Vinylflex 4-3-4 Roll, Closed

Duct Hardware & Accessories



Individual components available. Please visit our website for details.

Kwiki™ Sets & Parts

Residential regulators designed to allow easy installation onto any factory-made residential-quality damper blade. Special handle can be used on both ends by flipping it from one end to the other.

Part Numbers:

307961	1 Case w/100 Sets
307962	1 Case w/100 Economy Sets
307963	1 Case w/100 Regulators
307964	1 Case w/100 Retracting Bearings
307965	1 Case w/1,000 Retracting Bearings
307966	1 Case w/100 Economy Bearings
307967	1 Case w/1,000 Economy Bearings



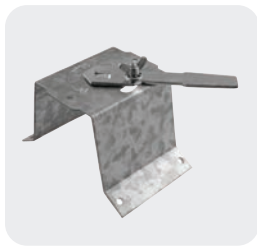
Individual components available. Please visit our website for details.

Dyn-A-Quad™ Damper Regulators

Damper regulators feature a 12GA steel handle and are available in single shear, double shear, and clamping (Clampmatic™) styles.

Part Numbers:

308027	1 Case w/ (50) 3/8" Dyn-A-Quad Single Shear Sets
308024	1 Case w/ (50) 1/2" Dyn-A-Quad Single Shear Sets
308030	1 Case w/ (50) 3/8" Dyn-A-Quad Double Shear Sets
308043	1 Case w/ (50) 1/2" Dyn-A-Quad Round Clampmatic™ Quadrants



Stand-Off Regulator

Provides clearance on externally lined ducts for up to 2" of insulation. Utilizing a reinforced 12GA off-set handle, regulator can be used with 3/8" Square End Bearing and features embossed guide for accurate handle positioning.

Part Numbers:

305520	1 Case w/ 100 Stand Off Regulators with Dial (For 3/8" Shaft)
--------	---



Dyn-A-Grip

Versatile duct hangers that are up to 6 times faster to install than traditional hanging systems. The #2 system supports up to 125 lbs and the #3 system supports up to 250 lbs.

Part Numbers:

357921	1 Spool w/ #2 (5/64") x 500' Cable
357898	1 Case w/ (50) #2 Cable Grips
357899	1 Case w/ (100) #2 Cable Grip Kits
357897	1 Spool w/ #3 (1/8") x 500' Cable
357896	1 Case w/ (50) #3 Cable Grips
357920	1 Case w/ (50) #3 Cable Grip Kits



Duct Strapping Tool

Hand tool for tension fastening of nylon straps in duct installation.

Part Numbers:

305529	1 Duct Strapping Tool
308241	1 Pack of (50) 24" Nylon Straps
308242	1 Pack of (50) 36" Nylon Straps
308243	1 Pack of (50) 48" Nylon Straps



Test Ports

Ideal for doing pressure, flow, and visual inspections of systems while in service.

Part Numbers:

308081	1 Case w/ 25 Test Port Fittings (PTP-1)
--------	---



Gasket Tapes

Gasket tapes with a self-adhesive peel-off backing in a variety of materials.

Part Numbers:

304605	1 Case w/ (24) 1/8" x 1/2" x 50' Neoprene Gasket Tape Rolls	304611	1 Case w/ (16) 3/8" x 3/4" x 25' Urethane Gasket Tape Rolls
304606	1 Case w/ (16) 1/8" x 3/4" x 50' Neoprene Gasket Tape Rolls	308632	1 Case w/ (20) 1/4" x 5/8" x 50' EPDM Gasket Tape Rolls
304607	1 Case w/ (16) 1/4" x 3/4" x 25' Neoprene Gasket Tape Rolls	310705	1 Case w/ (24) 1/8" x 1/2" x 40' A-1104 Butyl Rolls
304608	1 Case w/ (16) 3/8" x 3/4" x 20' Neoprene Gasket Tape Rolls	304271	1 Case w/ (20) 3/16" x 5/8" x 25' A-1104 Butyl Rolls
304609	1 Case w/ (24) 3/16" x 1/2" x 50' Urethane Gasket Tape Rolls		



Swivel-Lok & A-1 Fastener

Features a dependable closure for smaller access doors, panels, heavy, stamped-zinc-plated steel parts, as well as a large-diameter riveted assembly. Can be mounted with a 3/16" rivet or #10 screw and require no tools to operate.

Part Numbers:

308098	1 Case w/ 50 Swivel-Lok Sets
309068	1 Case w/ 100 A1 Quick Release Fasteners
324259	1 Case w/ 100 A5 Quick Release Fasteners



Standard and Heavy Duty Access Door Handles

Standard access door handles for doors/door frames up to 2" thick; heavy-duty access door handles are recommended for doors/door frames up to 4" thick.

Part Numbers:

308100	1 Case w/ (25) 1/2" Shaft Standard Access Door Handle Sets (For 2" Doors)	308102	1 Case w/ (10) 1/2" x 4" Heavy Duty Access Door Handle Sets (For 3" & 4" Doors)
308101	1 Case w/ (10) 1/2" x 2" Heavy Duty Access Door Handle Sets (For 2" Doors)	308321	1 Case w/ (10) 1/2" x 4" Nickel-Plated Heavy Duty Access Door Handle Sets (For 3" & 4" Doors)
308320	1 Case w/ (10) 2" Nickel-Plated Heavy Duty Access Door Handle Sets (For 2" Doors)		



Duct Protection Film

Temporary closure to protect uninstalled and partially installed ductwork.

Part Numbers:

326151	(1) 24" x 200' Roll (Medium Tack)	318443	(1) 24" x 200' Roll (High Tack)
326153	(1) 36" x 200' Roll (Medium Tack)	318444	(1) 36" x 200' Roll (High Tack)
326154	(1) 48" x 200' Roll (Medium Tack)	318445	(1) 48" x 200' Roll (High Tack)

Insulation Adhesives & Accessories

Water and solvent based adhesive manufactured by Hardcast® for attaching insulation to sheet metal, provide instant-tack, exceptional coverage and long-lasting performance. Our line of products includes adhesives in liquid and spray-applied formats, as well as select products with ASTM C 916, UL 723 or ASTM E 84 Flame and Smoke classifications. Made in the USA.



Speed-Tack™

Fast-tack, water-based insulation adhesive.

Part Numbers:

- | | |
|--------|----------------------------|
| 308589 | (1) 5-Gallon Pail (Cream) |
| 308590 | (1) 50-Gallon Drum (Cream) |



Booth-Tack™

Quick-tack, antimicrobial, non-flammable, water-based insulation adhesive for spray booth applications.

Part Numbers:

- | | |
|--------|----------------------------|
| 308585 | (1) 5-Gallon Pail (Black) |
| 308587 | (1) 50-Gallon Drum (Black) |



Roto-Tack™

Mid-tack, non-flammable, water-based insulation adhesive for roll coating applications.

Part Numbers:

- | | |
|--------|----------------------------|
| 308574 | (1) 5-Gallon Pail (Clear) |
| 308573 | (1) 50-Gallon Drum (Clear) |



Coil-Tack™

Low-tack, non-flammable, water-based insulation adhesive for coil line operations.

Part Numbers:

- | | |
|--------|----------------------------|
| 308582 | (1) 5-Gallon Pail (Black) |
| 308584 | (1) 50-Gallon Drum (Black) |
| 308580 | (1) 5-Gallon Pail (White) |
| 308581 | (1) 50-Gallon Drum (White) |



Insta-Grip™

Instant-tacking, solvent-based insulation adhesive.

Part Numbers:

- | | |
|--------|------------------------------------|
| 335509 | (1) 5-Gallon Pail (Black) |
| 335508 | (1) 50-Gallon Drum (Black) |
| 335501 | 1 Case w/ (4) 1-Gallon Pails (Red) |
| 335502 | (1) 5-Gallon Pail (Red) |
| 335507 | (1) 50-Gallon Drum (Red) |



Insta-Tack™ LV

Instant-tack, low-VOC, solvent-based insulation adhesive.

Part Numbers:

- | | |
|--------|------------------------------------|
| 316785 | 1 Case w/ (4) 1-Gallon Pails (Red) |
| 316786 | (1) 5-Gallon Pail (Red) |



Insulation Adhesives & Accessories



Low-VOC Travel-Tack™

Self-contained, low-VOC, instant-tacking portable spray system.

Part Numbers:

- 308605 | (1) #40 Cylinder
- 341635 | (1) #187 Torpedo Cylinder
- 341636 | (1) #375 Jumbo Cylinder



Seal-Tack™

Engineered to seal cut ends of fibrous glass duct liner or to coat foam insulation.

Part Numbers:

- 318903 | 1 Case w/ (4) 1-Gallon Pails (Black)
- 318902 | (1) 5-Gallon Pail (Black)
- 308609 | 1 Case w/ (4) 1-Gallon Pails (White)
- 308608 | (1) 5-Gallon Pail (White)



Edge Sealer

Engineered to coat the cut ends of fiberglass duct liner, wrapped insulation, rigid fiberglass duct board, and foam insulation.

Part Numbers:

- 323822 | 1 Case w/ (12) 12-oz. Spray Cans



Travel-Tack™ Spray Cans

Low-VOC, 50-state compliant, instant-tacking adhesive.

Part Numbers:

- 308599 | 1 Case w/ (12) 12-oz. Spray Cans



Low-VOC Un-Tack™ Adhesive Remover and Cleaner

Removes adhesives and sealants from a variety of surfaces.

Part Numbers:

- 330793 | (1) #8 Cylinder



Spray Station Accessories

Portable adhesive system spray gun, hoses, and tips to be used with TRAVEL-TACK product line.

Part Numbers:

- 307490 | 1 Adjustable Spray Gun
- 304302 | (1) 6' Adhesive Hose
- 304303 | (1) 12' Adhesive Hose
- 304304 | (1) 18' Adhesive Hose

Insulation Pinning Equipment

Insulation pinning equipment manufactured by Gripnail® brings reliability, speed, and efficiency to a new level. Our solutions boast the highest speeds on the market and are designed to withstand the toughest conditions (we seal critical components to resist dirt, airborne particles, and temperature). Ergonomically designed, easy to use. Made in the USA.



PowerPinner™ 7310

Heavy-duty, benchtop CD welding unit.

Part Numbers:

342921	Heavy-Duty C Clamp Bench Top CD Welder with Guide (7310-1)
342922	Heavy-Duty Painted S Clamp Bench Top CD Welder with Guide (7310-2)
342923	Heavy-Duty Bare S Clamp Bench Top CD Welder with Guide (7310-3)
342924	Heavy-Duty C Clamp Bench Top CD Welder without Guide (7310-4)
342926	Heavy-Duty Bare S Clamp Bench Top CD Welder without Guide (7310-6)



PowerPinner™ 7300

Light-weight, field-duty CD welder.

Part Numbers:

358866	Field-Duty Portable CD Welder (7300)
--------	--------------------------------------



Gripnailer 660

Fixed-head impact fastening machine with programmable logic controller. Features a 5 foot throat and large capacity feeder bowl to fasten large duct sections, reducing material handling.

Part Numbers:

358887	Gripnailer Auto-Fastening Machine (660)
--------	---



Gripnail® Hammer

Magnetic hand hammer features a cast steel head with embedded magnets that securely holds Gripnails or roofing fasteners during application.

Part Numbers:

307540	Gripnail Hammer (200)
--------	-----------------------

Insulation Pinning Equipment



PowerPinner™ 50

Multi-head pinner can weld up to 50' of duct per minute. Split track system allows for easy clear out and switching pin sizes. This system links up with a variety of industry leading manufacturers such as Engel Industries, Iowa Precision, and Vicon.

Part Numbers:

358938 | 5-Head Coil Line Welder (7500)
358937 | 6-Head Coil Line Welder (7600)



PowerPinner™ 7105HSG

Moving-head, pin welding floor machine is the industry's fastest at 83 cycles per minute. Moving head allows for longer duct to be handled as the welder head rolls along a fixed track.

Part Numbers:

358882 | High-Speed Moving-Head Welder (7105HSG)



PowerPinner™ 7005HSG

Fixed-head, pin welding floor machine is the industry's fastest at 83 cycles per minute. Double-acting load cylinder loads pins efficiently with less wear and tear.

Part Numbers:

358879 | High-Speed Fixed-Head Welder (7005HSG)



PowerPinner™ 7200

Solid-state resistance welder designed for mobility with same transformer output as the automated floor machines.

Part Numbers:

341633 | Heavy-Duty Portable Hand Welder (7200)



PowerPinner™ 7250

Heavy-duty benchtop welder with same transformer output as the automated floor machines.

Part Numbers:

341699 | Heavy-Duty Bench Top Hand Welder (7250)



PowerPinner™ 7100

Light-duty benchtop welder.

Part Numbers:

304644 | Light-Duty Portable Hand Welder (7100)

Insulation Fasteners



Gripnails

Weld pins for resistance machines available in sizes to accommodate insulation thicknesses up to 1".

Part Numbers:

308239	4 Pails w/ (1,000) 1/2" Gripnails (50S)	1/2" Insulation (All Densities)
308233	1 Pail w/ (5,000) 1/2" Gripnails (50B)	1/2" Insulation (All Densities)
308235	4 Pails w/ (1,000) 5/8" Gripnails (100S)	1" Insulation (1-1/2 lb. Density)
308229	1 Pail w/ (5,000) 5/8" Gripnails (100B)	1" Insulation (1-1/2 lb. Density)
308230	1 Pail w/ (5,000) 3/4" Gripnails (120B)	1" Insulation (3 lb. Density)



Insulated pins also available. Please visit our website for details.

PowerPoint™ Weld Pins

Weld pins for resistance machines available in sizes to accommodate insulation thicknesses ranging from 1/2" to 4".

Part Numbers:

308119	1 Pail w/ (5,000) 1/2" Cupped Head Pins (57B)	1/2" Insulation (All Densities)
308120	1 Pail w/ (5,000) 3/4" Cupped Head Pins (107B)	1" Insulation (1-1/2 lb. Density)
342045	1 Pail w/ (5,000) 1" Cupped Head Pins (117B)	1" Rubber/Foam
308121	1 Pail w/ (5,000) 1" Cupped Head Pins (127B)	1" Insulation (3 lb. Density)
308122	1 Pail w/ (3,000) 1-1/8" Cupped Head Pins (137B)	1.5" Insulation (All Densities)
307099	1 Pail w/ (3,000) 1-1/2" Cupped Head Pins (157B)	2" Insulation (1.5-2 lb. Density)
308125	1 Pail w/ (3,000) 2" Cupped Head Pins (207B)	2" Insulation (3 lb. Density)
342143	1 Pail w/ (3,000) 2" Cupped Head Pins (217B)	2" Rubber/Foam
342144	1 Pail w/ (2,500) 2-1/2" Cupped Head Pins (257B)	3" R12 Insulation
342046	1 Pail w/ (2,000) 2-3/4" Cupped Head Pins (307B)	3" Insulation
343153	1 Pail w/ (2,000) 3" Cupped Head Pins (317B)	3" Insulation
342145	1 Pail w/ (1,500) 3-3/4" Cupped Head Pins (407B)	4" Insulation



Flat Cap Weld Pins

Flat-cap weld pins for resistance machines available in sizes to accommodate insulation thicknesses ranging from 1/2" to 2".

Part Numbers:

308141	1 Pail w/ (5,000) 1/2" Flat Cap Pins (56DAFB)	1/2" Insulation (All Densities)
308142	1 Pail w/ (5,000) 3/4" Flat Cap Pins (106DAFB)	1" Insulation (1-1/2 lb. Density)
308143	1 Pail w/ (5,000) 1" Flat Cap Pins (126DAFB)	1" Insulation (3 lb. Density)
308144	1 Pail w/ (3,000) 1-1/8" Flat Cap Pins (136DAFB)	1.5" Insulation (All Densities)
307097	1 Pail w/ (3,000) 1-1/2" Flat Cap Pins (156DAFB)	2" Insulation (1.5-2 lb. Density)
304973	1 Pail w/ (3,000) 2" Flat Cap Pins (206DAFB)	2" Insulation (3 lb. Density)



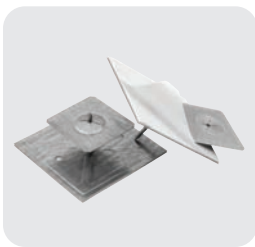
Mini-Cup CD Weld Pins

Available in 1" and 1-1/2" pin lengths.

Part Numbers:

- | | |
|--------|---|
| 342147 | 1 Case w/ (2,000) 1" Mini-Cup Pins (MC-1000-12-G-C) |
| 342149 | 1 Case w/ (2,000) 1-1/2" Mini-Cup Pins (MC-1500-12-G-C) |

Insulated pins also available. Please visit our website for details.



Insulation Hangers

Insulations hangers with a sticker backing and self-locking washers available in pin lengths ranging from 3/4" to 3-1/2".

Part Numbers:

- | | |
|--------|---|
| 308155 | 1 Pack w/ (500) 3/4" Insulation Hangers with Washers (IH-0750-12-G-C) |
| 342093 | 1 Pack w/ (500) 3/4" Insulation Hangers without Washers (IH-0750-12-G-C-NW) |
| 308156 | 1 Pack w/ (500) 1-1/4" Insulation Hangers with Washers (IH-1250-12-G-C) |
| 342076 | 1 Pack w/ (500) 1-5/8" Insulation Hangers with Washers (IH-1625-12-G-C) |
| 308158 | 1 Pack w/ (500) 1-3/4" Insulation Hangers with Washers (IH-1750-12-G-C) |
| 308159 | 1 Pack w/ (500) 2" Insulation Hangers with Washers (IH-2000-12-G-C) |
| 308160 | 1 Pack w/ (500) 2-1/2" Insulation Hangers with Washers (IH-2500-12-G-C) |
| 358893 | 1 Pack w/ (500) 3" Insulation Hangers with Washers (IH-3000-12-G-C) |
| 342074 | 1 Pack w/ (500) 3-1/2" Insulation Hangers with Washers (IH-3500-12-G-C) |



Spindle Anchor

Available in pin lengths ranging from 1-5/8" to 3-1/2".

Part Numbers:

- | | |
|--------|---|
| 342085 | 1 Pack w/ (500) 1-5/8" Spindle Anchors (SA-1625-12-G-C) |
| 342086 | 1 Pack w/ (500) 2" Spindle Anchors (SA-2000-12-G-C) |
| 342087 | 1 Pack w/ (500) 2-1/2" Spindle Anchors (SA-2500-12-G-C) |
| 342088 | 1 Pack w/ (500) 3-1/2" Spindle Anchors (SA-3500-12-G-C) |



We are extremely pleased with the performance and consistency of the equipment. The speed of the pinning process along with the holding power of the pins is very impressive!



**- Ken Jablonski, Sheet Metal Shop Superintendent
John W. Danforth Company, NY**

Restoration Products



RE-500

Complete one-coat coverage, high-performance, spray-applied insulation encapsulant and coating for use inside HVAC ductwork. Produced with EPA-registered chemicals to resist microbial growth.

Part Numbers:

319024 | (1) 5-Gallon Pail (Black)
319023 | (1) 5-Gallon Pail (White)



RS-100

Water-based spray sealant engineered to seal joints, penetrations, and seams from inside of the HVAC ductwork. Produced with EPA-registered chemicals to resist microbial growth.

Part Numbers:

319025 | (1) 5-Gallon Pail (Dark Blue)



RC-300

Spray-applied coating resists microbial growth, locks down offensive particles, and removes odors from the airstream.

Part Numbers:

329544 | (1) 5-Gallon Pail (Black)
349545 | (1) 5-Gallon Pail (Clear)
329742 | (1) 5-Gallon Pail (White)



Edge Sealer

Engineered to coat the cut ends of fiberglass duct liner, wrapped insulation, rigid fiberglass duct board, and foam insulation.

Part Numbers:

323822 | 1 Case w/ (12) 12-oz. Spray Cans



Pan-Grip™

Multicomponent novolac-based epoxy product to seal and repair corroded and leaking drain pans and surfaces.

Part Numbers:

331332 | 1 Case w/ (12) 9-oz. Burst Bags
331330 | (1) 1-Gallon Kit



Pan-Grip™ Flex

Multicomponent novolac-based elastomeric epoxy product to seal and repair corroded and leaking drain pans and surfaces where slight movement is expected.

Part Numbers:

331333 | (1) 2-Gallon Kit



Restoration Snapshot



Since the early 1930s, the Duke University Chapel has stood on the highest ridge of Duke's West Campus. For many decades, this chapel has been the site of thousands of services. With its rich history and architectural grandeur, Duke University kicked off restoration project to rehabilitate the interior and exterior of the Chapel. Pur-Vent, a full-service HVAC cleaning and sealing Company, based out of Cary, NC was tasked with restoring the entire HVAC system based on their experience with historic restoration.

Duke University was replacing the existing air handling units, and Pur-Vent was responsible for cleaning all the remaining ductwork and grills. The project's scope was eventually expanded to include 100 feet of underground fresh-air ducts that had previously been taken out of service. "They decided to put them back in service, and they wanted to coat them, so we suggested using **Hardcast's RE-500** (low-VOC spray insulation coating)," said Henry Baker, President of Pur-Vent.

Pur-Vent's immediate priority was to preserve its historic elements, including the brass grills, limestone walls, and woodwork. As duct cleaning is extremely important for a healthy and efficient airflow system, Pur-Vent's technicians first cleaned the ductwork with vacuums, then they performed a more thorough cleaning using whips and air-washing. Afterwards, Pur-Vent technicians hand-applied RE-500 using an airless sprayer. "Crews really like the RE-500 because it flows through the airless sprayer well and doesn't clog it up, and it provides a nice, even coat," said Baker. Coating the fiberglass liner or duct board with RE-500 increases the equipment's service life at a fraction of the cost of replacement. In addition, it is a low-VOC product that can be used inside an HVAC system, unlike many other products.

"It works better and costs less," said Baker.
"How can you beat that?"

Project Profile: Duke University Chapel

Applicator: Pur-Vent, LCC

Job Location: Durham, North Carolina

Product: Hardcast® RE-500

“

Architects and engineers are starting to realize that you can't just replace an air handling unit and not clean the existing ductwork and the air distribution, especially if you put new ductwork downstream.

- Henry Baker, *President of Pur-Vent*

”

Appendix: Product Specifications

	Iron-Grip 601	Flex-Grip 550	Versa-Grip 102	Versa-Grip 181
Grade	Best	Better	Best	Better
Type	Water-Based	Water-Based	Water-Based	Water-Based
Color	Gray	White/Gray	White	White/Gray
Fiber	Non-reinforced	Non-reinforced	Reinforced	Reinforced
Texture	Heavy	Heavy	Heavy	Heavy
Viscosity	>300K cps	>300K cps	>300K cps	>300K cps
Max Pressure	20"	16"	20"	20"
% Solids	63%	69%	73%	73%
Touch	Cure Time (hrs.)	1-2 hrs.	1-2 hrs.	1-2 hrs.
Test		24 hrs.	24 hrs.	24 hrs.
Through		24 hrs.	24 hrs.	24 hrs.
Base	Synthetic Latex	Synthetic Latex	Synthetic Latex	Synthetic Latex
Warranty	10-year indoor, 10-year outdoor w/ 701	N/A	N/A	5-year indoor, 10-year outdoor w/ 701
MFG	USA	USA	USA	USA
VOC	49 g/l	49 g/l	38 g/l	38 g/l
GreenGuard	Gold	Standard	Gold	Gold
UL 181A-M	N	N	Y	Y
UL 181B-M	Y	Y	Y	Y
ASTM E84	0/0	0/0	0/0	0/0
CDPH	Method v1.2	Method v1.2	Method v1.2	Method v1.2
Packaging	C,1	AC,1	C,1,2	C,1,2
Indoor/ Outdoor	I/O	I/O	I/O	I/O
Freeze/Thaw	Passed 5	Passed 5	Passed 5	Passed 5
DHS, USCG Approval	Approved	N/A	N/A	N/A
Mold/ Mildew	ASTM G21, ASTM D3273	ASTM G21	ASTM G21, ASTM D3273	ASTM G21
UV Weathering	Aging Effects of Artificial Weathering ASTM C732 Passed @ 1,500 Hour Exposure	Excellent UV resistance	Aging Effects of Artificial Weathering ASTM C732 Passed @ 1,500 Hour Exposure	Aging Effects of Artificial Weathering ASTM C732 Passed @ 1,500 Hour Exposure

Appendix: Product Specifications

	CCWI-181	Duct-Seal 321	Sure-Grip 404
Grade	Good	Good	Best
Type	Water-Based	Water-Based	Solvent-Based
Color	White/Gray/Black	White/Gray	Gray
Fiber	Reinforced	Reinforced	Non-reinforced
Texture	Heavy	Smooth	Heavy
Viscosity	>300K cps	>250K cps	250-650K cps
Max Pressure	16"	20"	20"
% Solids	73%	65%	65%
Touch	Cure Time (hrs.)	1-2 hrs.	1-2 hrs.
Test		24 hrs.	12 hr.
Through		24 hrs.	24 hrs.
Base	Synthetic Latex	Synthetic Latex	Synthetic Rubber Resin
Warranty	N/A	N/A	N/A
MFG	USA	USA	USA
VOC	38 g/l	92 g/l	395 g/l
GreenGuard	Standard	Gold	CDPH
UL 181A-M	Y	N	N
UL 181B-M	Y	Y	Y
ASTM E84	0/0	0/0	10/5
CDPH	Method v1.2	Method v1.2	Method v1.2
Packaging	C,1,2,5	C,1,5	C,1
Indoor/ Outdoor	I/O	I/O	I/O
Freeze/Thaw	Passed 5	Passed 5	Passed 5
DHS, USCG Approval	N/A	Approved	N/A
Mold/ Mildew	ASTM G21	ASTM G21, ASTM D3273	N/A
UV Weathering	Excellent UV resistance	Aging Effects of Artificial Weathering ASTM C732 Passed @ 1,500 Hour Exposure	N/A

Appendix: LEED Credit Information

Product	Product Type	Manufacturing Location	Post-Consumer Recycled Content	Pre-Consumer Recycled Content	VOC Content
A-1104 Butyl Gasket Sealer	Rolled Elastomeric Sealant	St. Louis, MO	0%	0%	N/A
Aluma-Grip AFT-701	Rolled Elastomeric Sealant	Wylie, TX	0%	0%	N/A
All-Purpose 1602	Construction Tape	Wylie, TX	0%	0%	N/A
Booth-Tack	Adhesive	Wylie, TX	0%	0%	72 g/L
BRT-801	Construction Tape	Wylie, TX	0%	0%	N/A
CCWI-181	Mastic Duct Sealant	Wylie, TX	0%	0%	38 g/L
Coil-Tack	Adhesive	Wylie, TX	0%	0%	71 g/L
Cold-Seal	Mastic Duct Sealant	Wylie, TX	0%	0%	198 g/L
Duct-Seal 321	Mastic Duct Sealant	Wylie, TX	0%	0%	93 g/L
Edge Sealer	Insulation Sealant	Omaha, NE	0%	0%	73 g/L
Flex-Grip 550	Mastic Duct Sealant	Wylie, TX	0%	0%	49 g/L
Foil-Grip 1402	Rolled Elastomeric Sealant	Wylie, TX	0%	0%	N/A
Foil-Grip 1403-181BFX	Rolled Elastomeric Sealant	Weesp, Holland	0%	0%	N/A
Foil-Grip 1404-181BFX	Rolled Elastomeric Sealant	Weesp, Holland	0%	0%	N/A
High-Temperature Silicone	Silicone Sealant	Mentor, OH	0%	0%	Not Determined
Iron-Grip 601	Mastic Duct Sealant	Wylie, TX	0%	0%	49 g/L
Insta-Grip	Adhesive	Carlisle, PA	0%	0%	471 g/L
Insta-Tack LV	Adhesive	Carlisle, PA	0%	0%	250 g/L
Low-VOC Travel-Tack	Adhesive	St. Louis, MO	0%	0%	<61 g/L
Low-VOC Un-Tack	Adhesive Remover	St. Louis, MO	0%	0%	33 g/l 100% by volume

Appendix: LEED Credit Information

Product	Product Type	Manufacturing Location	Post-Consumer Recycled Content	Pre-Consumer Recycled Content	VOC Content
Metalbond MS	Adhesive	Mannassas, VA	0%	0%	2% by volume
Multi-Purpose Silicone	Silicone Sealant	Mentor, OH	0%	0%	Not Determined
Pan-Grip	Epoxy Pan Coating	Wylie, TX	0%	0%	0%
Pan-Grip Flex	Epoxy Pan Coating	Wylie, TX	0%	0%	0%
RC-300	Insulation Encapsulator	Wylie, TX	0%	0%	13 g/L
RE-500	Insulation Encapsulator	Wylie, TX	0%	0%	13 g/L
Roto-Tack	Adhesive	Wylie, TX	0%	0%	73 g/L
RS-100	Duct Sealant	Wylie, TX	0%	0%	48 g/L
Seal-Tack	Insulation Sealer	Wylie, TX	0%	0%	13 g/L
Seam Sealer	Mastic Duct Sealant	Wylie, TX	0%	0%	49 g/L
Speed-Tack	Adhesive	Wylie, TX	0%	0%	70 g/L
Spray-Seal	Mastic Duct Sealant	Wylie, TX	0%	0%	48 g/L
Sure-Grip 404	Mastic Duct Sealant	Carlisle, PA	0%	0%	395 g/L
TGM-3300	Construction Tape	Wylie, TX	0%	0%	N/A
TPO-2265	Construction Tape	Wylie, TX	0%	0%	N/A
Travel-Tack Spray Cans	Adhesive	Omaha, NE	0%	0%	54.1 g/L
Versa-Grip 102	Mastic Duct Sealant	Wylie, TX	0%	0%	38 g/L
Versa-Grip 181	Mastic Duct Sealant	Wylie, TX	0%	0%	38 g/L

Superior Solutions

Delivering Maximum Efficiency and Sustainability for Commercial and Residential Installations, Change Outs and Restoration Projects.

Commercial Structures | Residential Structures | Hospitals | Historical Buildings | Schools



Carlisle HVAC Brands are trusted by professionals for their proven performance, award-winning industry recognition, and reliable warranty coverage. We support HVAC sheet metal fabricators and mechanical contractors every step of the process with unmatched training and support designed to maximize productivity, system performance, and customer satisfaction.

Carlisle HVAC Brands is part of Carlisle Weatherproofing Technologies (CWT), a leading supplier of integrated building envelope solutions that ensure superior building performance across both commercial and residential applications. CWT is a wholly owned subsidiary of Carlisle Companies (NYSE: CSL).



CarlisleHVAC.com

USA: 900 Hensley Lane, Wylie, TX 75098 • (877) 495-4822

97 Dexter Road, East Providence, RI 02914 • (401) 216-7900

CANADA: 2055 Hymus Boulevard, Dorval, QC H9P 1J8 • (800) 544-5535

©2025 Carlisle. 521.7US.E862 (10/25)

LEED is a registered trademark of the United States Green Building Council. Carlisle is a trademark of Carlisle. Hardcast, Iron-Grip, Versa-Grip, Flex-Grip, Duct-Seal, Spray-Seal, Coil-Tack, Roto-Tack, Speed-Tack, Travel-Tack, Foil-Grip, Aluma-Grip, Seal-Tack, Circu-Flex, Booth-Tack, Insta-Tack, Clampmatic, Kwiki, and Cartridge Killer are trademarks of Hardcast. Sure-Grip is a trademark of Carlisle Coatings & Waterproofing. Gripnail is a registered trademark of Carlisle. DynAir is a Trademark of DynAir.