

PRODUCT SPECIFICATION SHEET

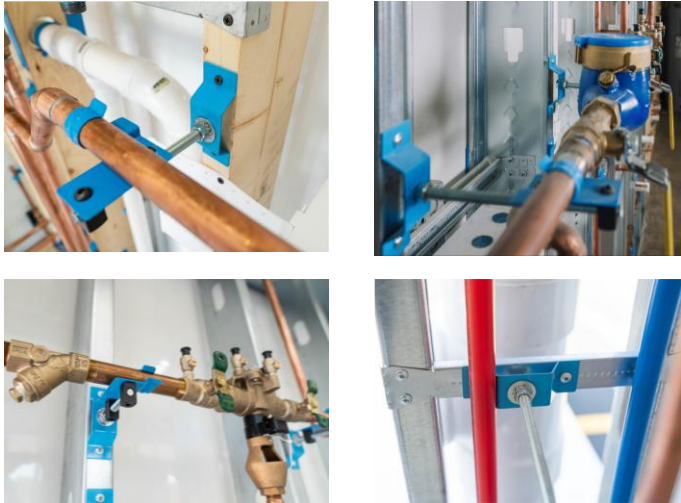
HAP CARRIER BRIDGE

HAP CARRIER BRIDGE

Model Number: PL-1111-CB1



Model PL-1111-CB1 examples of installation application



Model PL-1111-CB1

Dimensional and Performance Data	
Length	4.25"
Width	1.375"
Height	.75"
Material	16G Spring Steel
Finish	Powder Coated

- HAP Carrier Bridge is made from tempered spring steel with a durable powder coated finish for indoor or outdoor applications.
- Installs with two screws using a cordless drill/driver.
- Designed to accept a 3/8" threaded rod that is secured to the Carrier Bridge using lock washers and nuts.
- No sharp edges for safe installation and use.
- HAP product to purchase for use with the Carrier Bridge are:
 - **HAP Bullet** PL-1111-BTR1 or PL-1111-BTR4
 - **Mounting Brace** PL-1111-MB1 or MB-1111-MB10
 - **Small HAP Hangers:**
 - PL-1111-1/2, PL-1111-3/4, PL-1111-1
 - PL-1111-B1/2, PL-1111-B3/4, PL-1111-B1
 - **Medium HAP Hangers:**
 - PL-1111-7, PL-1111-15, PL-1111-23
 - PL-1111B5, PL-1111-B10, PL-1111-B20
- **Other items needed:**
 - 3/8" Threaded Rod(s)
 - 3/8" lock washers and nuts

Product Submittal	
Date:	
Job Name:	
Model Number	Quantity
Architect / Owner:	
Contractor:	
Notes	

