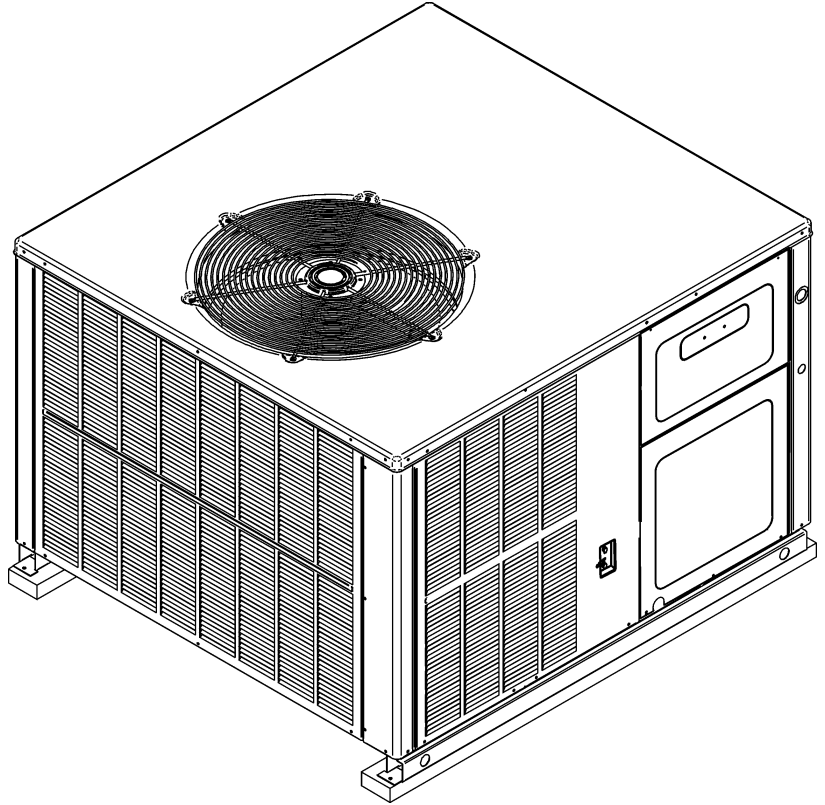


REPAIR PARTS

A/GPH15 "M" Series Heat Pump

APH1524M41AC
APH1524M41AD
APH1530M41AC
APH1530M41AD
APH1536M41AC
APH1536M41AD
APH1543M41AC
APH1549M41AC
APH1549M41AD
APH1560M41AD
GPH1524M41AC
GPH1524M41AD
GPH1530M41AC
GPH1530M41AD
GPH1536M41AC
GPH1536M41AD
GPH1543M41AC
GPH1549M41AC
GPH1549M41AD
GPH1560M41AC
GPH1560M41AD



This manual is to be used by qualified technicians only.

This manual replaces RP-700C..

© 2012-2013,2015 Goodman Company, L.P. ♦ 5151 San Felipe St., Suite 500 ♦ Houston, TX 77056

Important Information

Index

Functional Parts List	3
Illustration and Parts	4 - 11

Views shown are for parts illustrations only, not servicing procedures

- 3.2.15: Updated condenser coil assy part number
- 6.23.15: Removed excess motor 0130M00497

Text Codes:

- AR - As Required
- NA - Not Available
- NS - Not Shown
- 00000000 - See Note
- QTY - Quantity Example (QTY 3) (If Quantity not shown, Quantity = 1)
- M - Model Example (M1) (If M Code not shown, then part is used on all Models)

Expanded Model Nomenclature:

Example M1 - Model#1 M2 - Model#2 M3 - Model#3

Goodman Company, L.P. is not responsible for personal injury or property damage resulting from improper service. Review all service information before beginning repairs.

Warranty service must be performed by an authorized technician, using authorized factory parts. If service is required after the warranty expires, Goodman Company, L.P. also recommends contacting an authorized technician and using authorized factory parts.

Goodman Company, L.P. reserves the right to discontinue, or change at any time, specifications or designs without notice or without incurring obligations.

For assistance within the U.S.A. contact:
Consumer Affairs Department
Goodman Company, L.P.
7401 Security Way
Houston, Texas 77040
877-254-4729-Telephone
713-863-2382-Facsimile

For assistance outside the U.S.A. contact:
International Division
Goodman Company, L.P.
7401 Security Way
Houston, Texas 77040
713-861-2500-Telephone
713-863-2382-Facsimile

Cabinet Assembly

Image 1

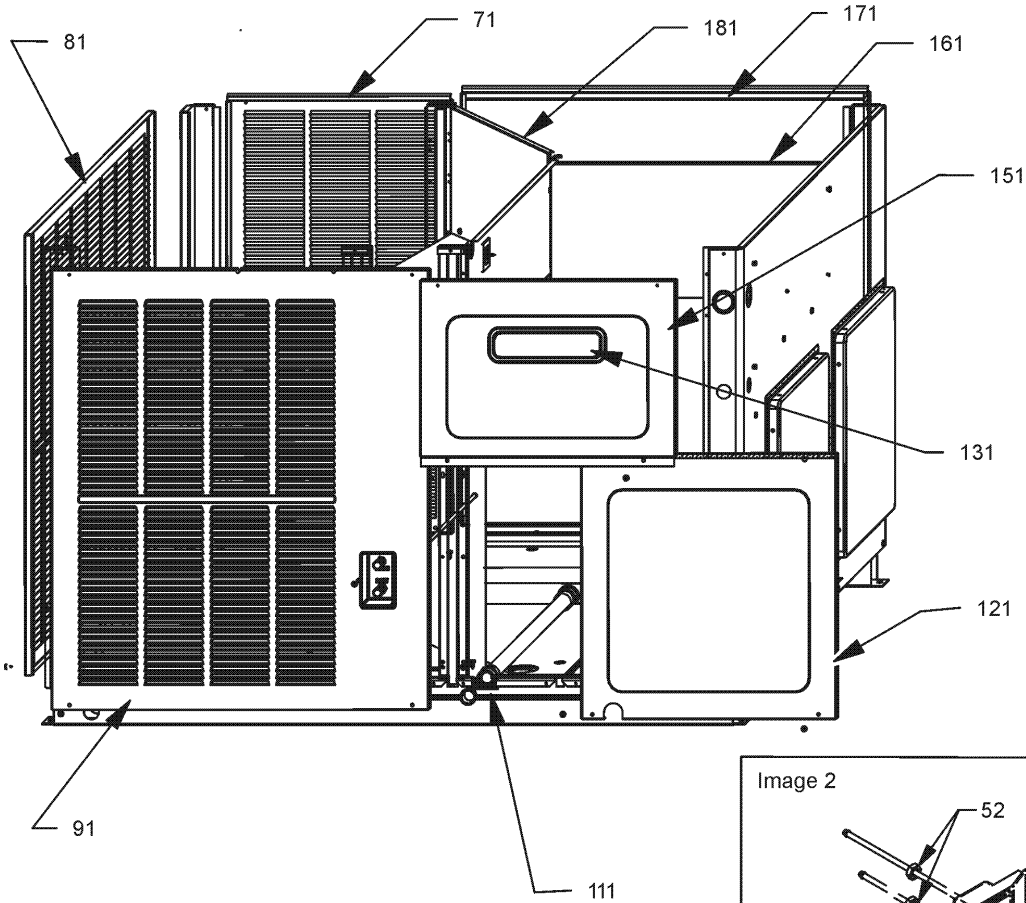
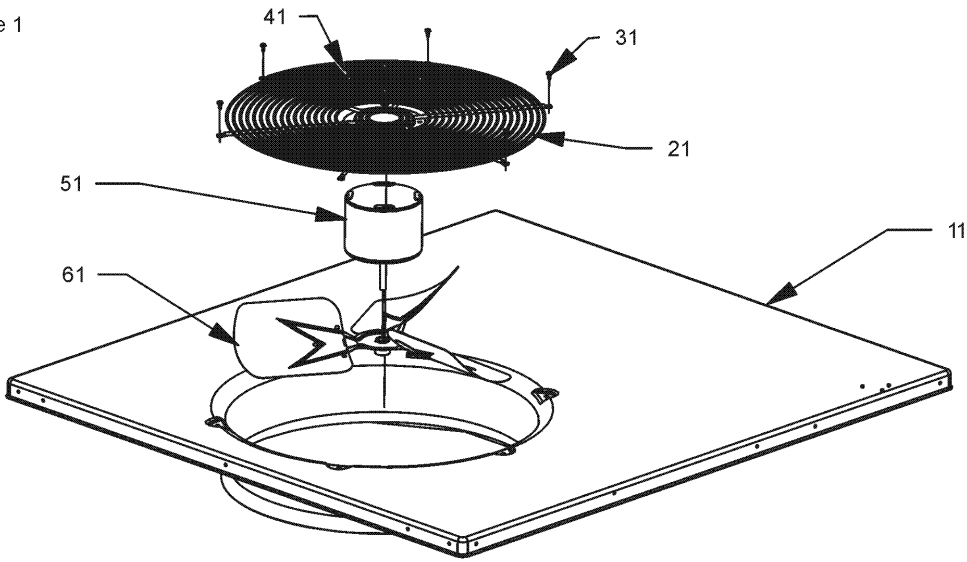
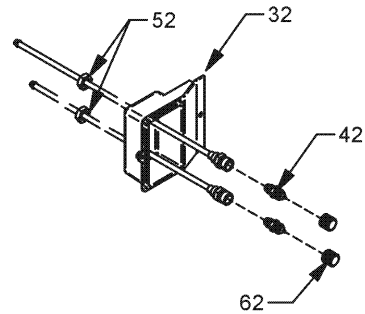


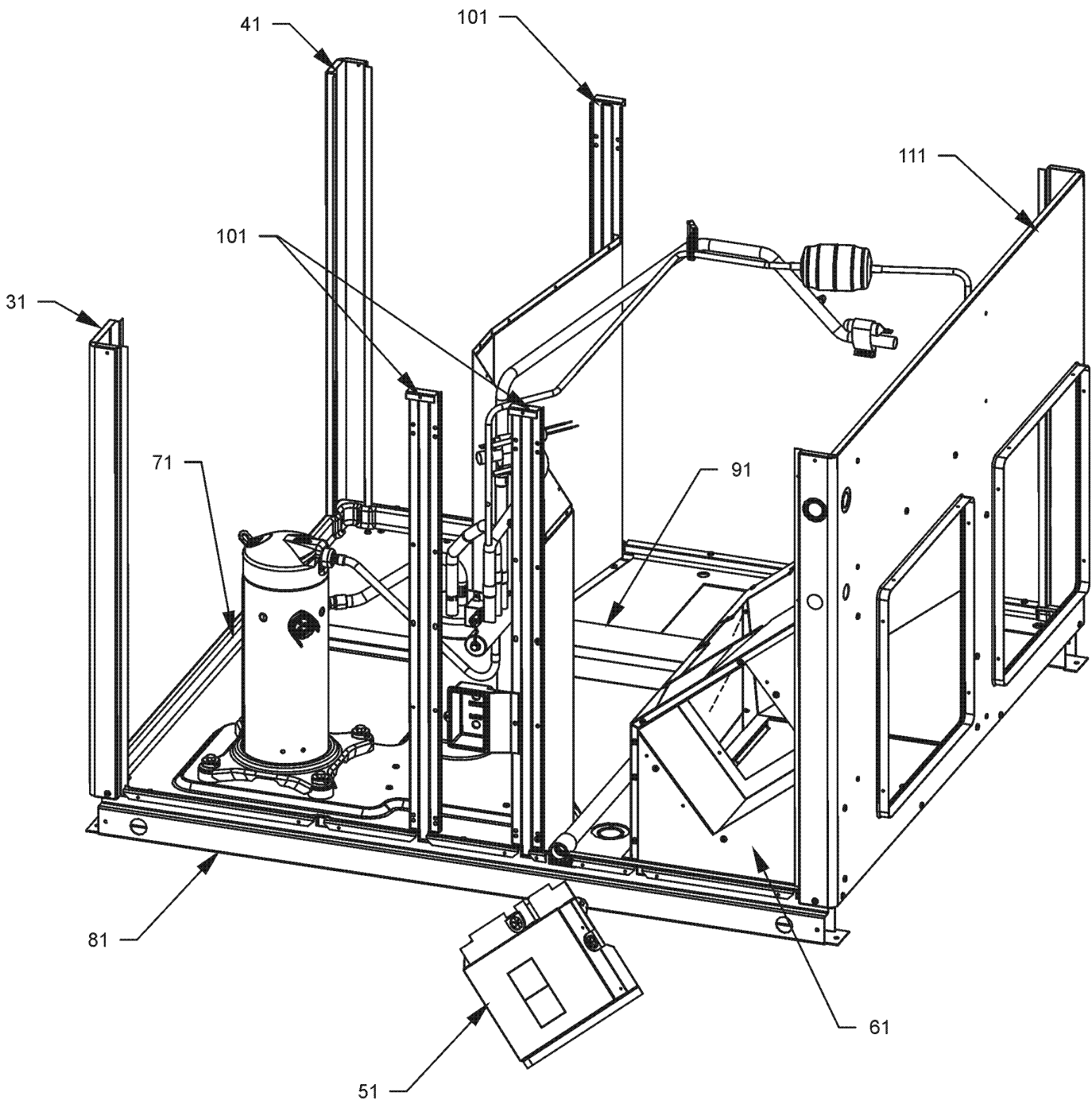
Image 2



Cabinet Assembly

Ref. Part No: No:	Description:	Ref. Part No: No:	Description:																					
Image 1:		Image 1:																						
11	0121G00156PDG PNL, TOP, PNT	171	0121G00168PDG PNL, BLO, CNVRT, 40", PNT (M7, M8, M9, M10, M17, M18, M19, M20, M21)																					
21	0152G00000 FAN GRILLE, RAISED	181	0221G00013P ASSY, SHRD, FAN																					
31	B1393530 SCREW HWH,10 X 1/2, A, YZD, SLOT, SR (M7, M8, M9, M10, M17, M18, M19, M20, M21)	NS	0121G00235 FAN BAFFLE																					
31	M0221817 SMALL SCREW (M1, M2, M3, M4, M5, M6, M11, M12, M13, M14, M15, M16)	NS	17788000083F PVC CONDUIT 8.25"																					
41	0163M00006P ACORN NUT 5/16 HEX BLACK (QTY 4)	Image 2:																						
51	0131M00430 COND MOTOR 1/3 HP, 1 SP, 6 PL (M10, M20, M21)	32	0161G00008 ACCESS-FITTING BOX																					
51	0131M00061 COND MOTOR 1/4 HP, 1 SP, 8 PL (M1, M2, M3, M4, M5, M6, M11, M12, M13, M14, M15, M16)	42	B1373315 ACCESS FITTING (QTY 2)																					
51	0131M00429 COND MOTOR 1/4 HP, 1 SP,6 PL (M7, M8, M9, M17, M18, M19)	52	0163G00000P FASTEST FITTING NUT (QTY 2)																					
61	0150G00002 FAN BLADE SWEEP-WING (M1, M2, M3, M4, M5, M6, M7, M8, M9, M11, M12, M13, M14, M15, M16, M17, M18, M19)	62	0163M00175 CAP WITH O-RING (QTY 2)																					
61	0150M00011 FAN BLADE SWEEP-WING (M10, M20, M21)	Expanded Model Nomenclature																						
71	20464401PDG LOUVERED PANEL, COND SIDE 32" (M11, M12, M13, M14, M15, M16)	<table border="1"> <tr><td>M1 - APH1524M41AC</td></tr> <tr><td>M2 - APH1524M41AD</td></tr> <tr><td>M3 - APH1530M41AC</td></tr> <tr><td>M4 - APH1530M41AD</td></tr> <tr><td>M5 - APH1536M41AC</td></tr> <tr><td>M6 - APH1536M41AD</td></tr> <tr><td>M7 - APH1543M41AC</td></tr> <tr><td>M8 - APH1549M41AC</td></tr> <tr><td>M9 - APH1549M41AD</td></tr> <tr><td>M10 - APH1560M41AD</td></tr> <tr><td>M11 - GPH1524M41AC</td></tr> <tr><td>M12 - GPH1524M41AD</td></tr> <tr><td>M13 - GPH1530M41AC</td></tr> <tr><td>M14 - GPH1530M41AD</td></tr> <tr><td>M15 - GPH1536M41AC</td></tr> <tr><td>M16 - GPH1536M41AD</td></tr> <tr><td>M17 - GPH1543M41AC</td></tr> <tr><td>M18 - GPH1549M41AC</td></tr> <tr><td>M19 - GPH1549M41AD</td></tr> <tr><td>M20 - GPH1560M41AC</td></tr> <tr><td>M21 - GPH1560M41AD</td></tr> </table>		M1 - APH1524M41AC	M2 - APH1524M41AD	M3 - APH1530M41AC	M4 - APH1530M41AD	M5 - APH1536M41AC	M6 - APH1536M41AD	M7 - APH1543M41AC	M8 - APH1549M41AC	M9 - APH1549M41AD	M10 - APH1560M41AD	M11 - GPH1524M41AC	M12 - GPH1524M41AD	M13 - GPH1530M41AC	M14 - GPH1530M41AD	M15 - GPH1536M41AC	M16 - GPH1536M41AD	M17 - GPH1543M41AC	M18 - GPH1549M41AC	M19 - GPH1549M41AD	M20 - GPH1560M41AC	M21 - GPH1560M41AD
M1 - APH1524M41AC																								
M2 - APH1524M41AD																								
M3 - APH1530M41AC																								
M4 - APH1530M41AD																								
M5 - APH1536M41AC																								
M6 - APH1536M41AD																								
M7 - APH1543M41AC																								
M8 - APH1549M41AC																								
M9 - APH1549M41AD																								
M10 - APH1560M41AD																								
M11 - GPH1524M41AC																								
M12 - GPH1524M41AD																								
M13 - GPH1530M41AC																								
M14 - GPH1530M41AD																								
M15 - GPH1536M41AC																								
M16 - GPH1536M41AD																								
M17 - GPH1543M41AC																								
M18 - GPH1549M41AC																								
M19 - GPH1549M41AD																								
M20 - GPH1560M41AC																								
M21 - GPH1560M41AD																								
71	20464401PLG LOUVERED PANEL, COND SIDE 32" (M1, M2, M3, M4, M5, M6)																							
71	20464402PDG LOUVERED PANEL, COND SIDE 40" (M17, M18, M19, M20, M21)																							
71	20464402PLG LOUVERED PANEL, COND SIDE 40" (M7, M8, M9, M10)																							
81	20467701PDG LOUVERED PANEL, COND SIDE 32" (M11, M12, M13, M14, M15, M16)																							
81	20467701PLG LOUVERED PANEL, COND SIDE 32" (M1, M2, M3, M4, M5, M6)																							
81	20467702PDG LOUVERED PANEL, COND SIDE 40" (M17, M18, M19, M20, M21)																							
81	20467702PLG LOUVERED PANEL, COND SIDE 40" (M7, M8, M9, M10)																							
91	0121G00146LG LOUVERED PANEL 4 BANK 32.5", COMP SIDE (M1, M2, M3, M4, M5, M6)																							
91	0121G00146PDG LOUVERED PANEL 4 BANK 32.5", COMP SIDE (M11, M12, M13, M14, M15, M16)																							
91	0121G00147LG LOUVERED PANEL 4 BANK 40", COMP SIDE (M7, M8, M9, M10)																							
91	0121G00147PDG LOUVERED PANEL 4 BANK 40", COMP SIDE (M17, M18, M19, M20, M21)																							
111	0261G00000 DRAIN PIPE																							
121	20464801PDG BLOWER DOOR 32" (M1, M2, M3, M4, M5, M6, M11, M12, M13, M14, M15, M16)																							
121	20464806PDG BLOWER DOOR 40" (M7, M8, M9, M10, M17, M18, M19, M20, M21)																							
131	B10259253 AMANA LABEL (M1, M2, M3, M4, M5, M6, M7, M8, M9, M10)																							
131	B10259251 GOODMAN LABEL (M11, M12, M13, M14, M15, M16, M17, M18, M19, M20, M21)																							
151	0121G00137 PL, LV BARRIER																							
161	0121G00591 BLK-OFF, EVAP, TOP, CNVRT (M7, M8, M9, M10, M17, M18, M19, M20, M21)																							
161	0121G00592 BLK-OFF, EVAP, TOP, CNVRT (M1, M2, M3, M4, M5, M6, M11, M12, M13, M14, M15, M16)																							
171	0121G00165PDG PNL, BLO, CNVRT, 32.5", PNT (M1, M2, M3, M4, M5, M6, M11, M12, M13, M14, M15, M16)																							

Panels and Supports



Panels and Supports

Ref. Part No:	Ref. Part No:	Description:	Description:
Image 1:			
31	20464201PDG	CORNER POST-COMP END 32" (M1, M2, M3, M4, M5, M6, M11, M12, M13, M14, M15, M16)	
31	20464202PDG	CORNER POST-COMP END 40" (M7, M8, M9, M10, M17, M18, M19, M20, M21)	
41	20464301PDG	CORNER POST-HAIRPIN END 32" (M1, M2, M3, M4, M5, M6, M11, M12, M13, M14, M15, M16)	
41	20464302PDG	CORNER POST-HAIRPIN END 40" (M7, M8, M9, M10, M17, M18, M19, M20, M21)	
51	0121G00528	HEATER KIT COVER (QTY 2)	
61	0221G00014	BLOWER TRANSITION ASSY	
71	0121G00290	BASE PAN RAIL (QTY 2)	
81	0121G00444	BASEPAN, PACKAGE	
91	0161G00003	PLASTIC DRIP PAN	
101	0121G00460	SUPPORT POST 32" (M1, M2, M3, M4, M5, M6, M11, M12, M13, M14, M15, M16)	
101	0121G00462	SUPPORT POST 40" (M7, M8, M9, M10, M17, M18, M19, M20, M21)	
111	0121G00440DG	PNL, DUCT, CNVRT, 32.5" PNT (M1, M2, M3, M4, M5, M6, M11, M12, M13, M14, M15, M16)	
111	0121G00441DG	PNL, DUCT, CNVRT, 40" PNT (M7, M8, M9, M10, M17, M18, M19, M20, M21)	

Expanded Model Nomenclature

M1 - APH1524M41AC
M2 - APH1524M41AD
M3 - APH1530M41AC
M4 - APH1530M41AD
M5 - APH1536M41AC
M6 - APH1536M41AD
M7 - APH1543M41AC
M8 - APH1549M41AC
M9 - APH1549M41AD
M10 - APH1560M41AD
M11 - GPH1524M41AC
M12 - GPH1524M41AD
M13 - GPH1530M41AC
M14 - GPH1530M41AD
M15 - GPH1536M41AC
M16 - GPH1536M41AD
M17 - GPH1543M41AC
M18 - GPH1549M41AC
M19 - GPH1549M41AD
M20 - GPH1560M41AC
M21 - GPH1560M41AD

Tubing / Coil Assemblies

Image 1

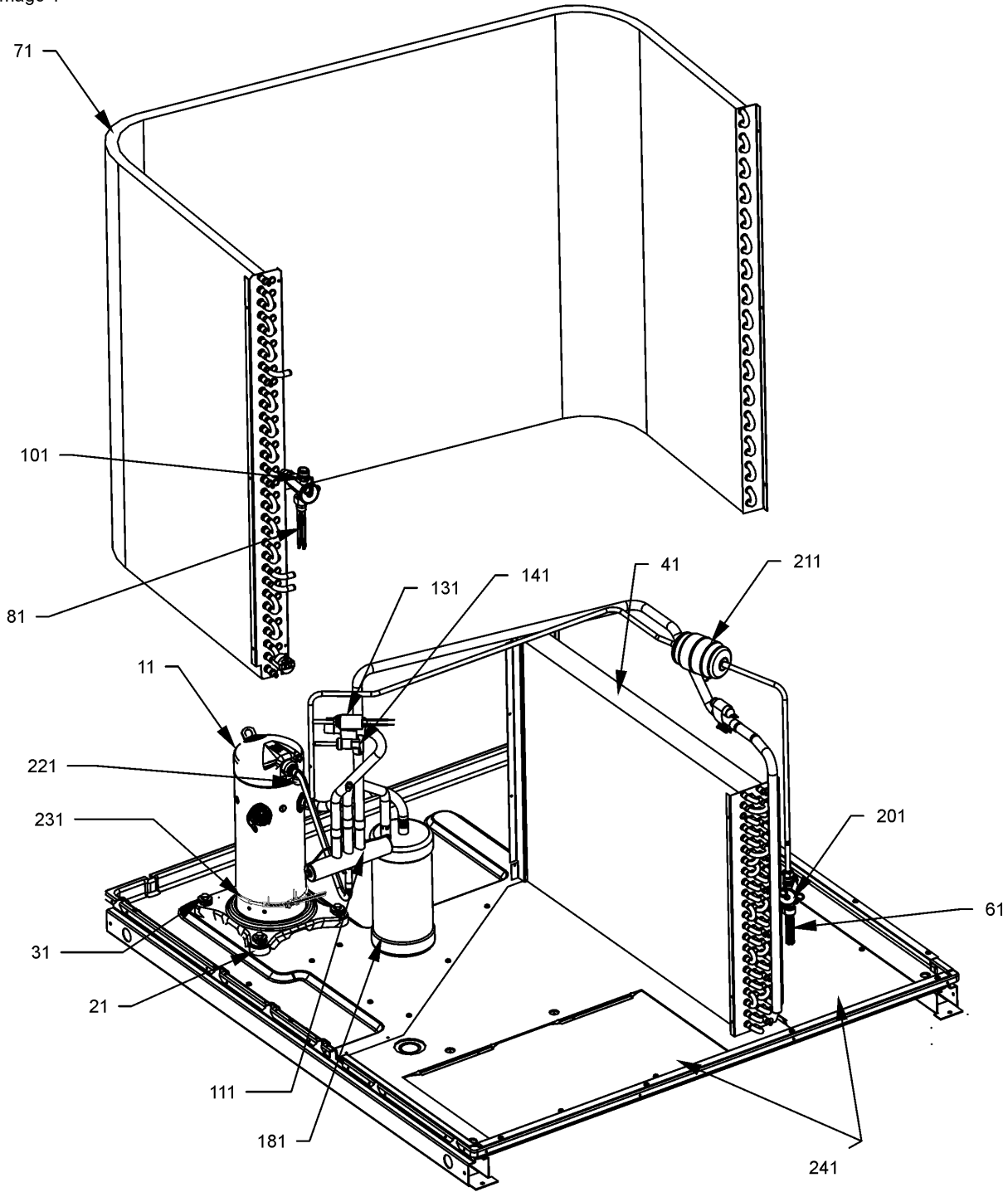
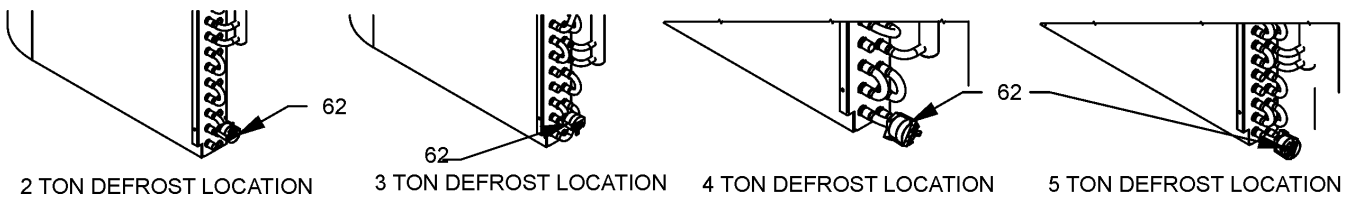


Image 2



Tubing / Coil Assemblies

Ref. Part No: No:	Description:	Ref. Part No: No:	Description:
Image 1:		Image 1:	
11	ZPS51K5EPFV130 COMP, 51900/208/230/60/1 (M10, M21)	221	0230G00005 CRANKCASE HEATER SWITCH (M5, M6, M7, M8, M9, M10, M15, M16, M17, M18, M19, M20, M21)
11	ZP21K5EPFV130 COMPRESSOR 21300, 208/230/60/1 (M1, M2, M11, M12)	231	0130L00017 CRANK CASE HEATER-70W 240V (M10, M20, M21)
11	ZP25K5EPFV130 COMPRESSOR 25200, 208/230/60/1 (M3, M4, M13, M14)	231	0163R00003 HEATER, CRANKCASE 230V 40W (M7, M8, M9, M17, M18, M19)
11	ZP31K5EPFV130 COMPRESSOR 31100, 208/230/60/1 (M5, M6, M15, M16)	231	0163R00002 HEATER, CRANKCASE 230V, 40W (M5, M6, M15, M16)
11	ZP34K5EPFV130 COMPRESSOR 34500, 208/230/60/1 (M7, M17)	241	0121G00148 SINGLE COVER, DOWN DISCHARGE (QTY 2)
11	ZPS40K4EPFV230 COMPRESSOR 40000, 208/230/60/1/2STG (M8, M18)	NS	0259G00063 COMPRESSOR HARNESS (M8, M18, M20)
11	ZPS40K5EPFV130 COMPRESSOR 41100, 208/230/60/1 (M9, M19)	NS	0159G00002 COMPRESSOR SCROLL HARNESS (M1, M2, M3, M4, M5, M6, M11, M12, M13, M14, M15, M16)
11	ZPS51K4EPFV230 COMPRESSOR 52000, 208/230/60/1/2STG (M20)	NS	0159G00004 COMPRESSOR SCROLL HARNESS (M9, M10, M19, M21)
21	B1339533 COMPRESSOR GROMMET (QTY 4)	NS	0159R00003P COMPRESSOR SCROLL HARNESS (M7, M17)
31	M0221641 TF SHOULDER SCREW (QTY 4)	NS	0159G00001 COMPRESSOR SOLENOID CABLE (M8, M9, M10, M18, M19, M20, M21)
41	0202G00110 TUBING ASSY, EVAP COIL (M1, M2, M3, M4, M11, M12, M13, M14)	NS	0130M00106 DISC THERMOSTAT CRNKCS HTR SW (M5, M6, M7, M8, M9, M10, M15, M16, M17, M18, M19, M20, M21)
41	0202G00111 TUBING ASSY, EVAP COIL (M5, M6, M15, M16)	NS	B1225022 SOLENOID COIL
41	0202G00317 TUBING ASSY, EVAP COIL (M7, M17)	Image 2:	
41	0202G00321 TUBING ASSY, EVAP COIL (M8, M9, M10, M18, M19, M20, M21)	62	0130M00101 CONTROL, DEFROST
61	0162M00154 FLOWRATOR [EVAP] (M7, M17)	Expanded Model Nomenclature	
61	B2114600 FLOWRATOR [EVAP] (M1, M2, M3, M4, M5, M6, M11, M12, M13, M14, M15, M16)	<div style="border: 1px solid black; padding: 5px;"> M1 - APH1524M41AC M2 - APH1524M41AD M3 - APH1530M41AC M4 - APH1530M41AD M5 - APH1536M41AC M6 - APH1536M41AD M7 - APH1543M41AC M8 - APH1549M41AC M9 - APH1549M41AD M10 - APH1560M41AD M11 - GPH1524M41AC M12 - GPH1524M41AD M13 - GPH1530M41AC M14 - GPH1530M41AD M15 - GPH1536M41AC M16 - GPH1536M41AD M17 - GPH1543M41AC M18 - GPH1549M41AC M19 - GPH1549M41AD M20 - GPH1560M41AC M21 - GPH1560M41AD </div>	
61	B2114800 FLOWRATOR [EVAP] (M8, M9, M10, M18, M19, M20, M21)		
71	0201G00173 CONDENSER COIL ASSY (M8, M9, M18, M19)		
71	0201G00255 CONDENSER COIL ASSY (M7, M17)		
71	0201G00276 CONDENSER COIL ASSY (M2, M4, M12, M14)		
71	0201G00277 CONDENSER COIL ASSY (M6, M16)		
71	0201G00094 TUBING ASSY, COND COIL 32" (M1, M3, M11, M13)		
71	0201G00095 TUBING ASSY, COND COIL 32" (M5, M15)		
71	0201G00096 TUBING ASSY, COND COIL 40" (M10, M20, M21)		
81	B2114657 FLOWRATOR .057 [COND] (M6, M16)		
81	0162M00086 FLOWRATOR .072 [COND] (M7, M17)		
81	0162M00055 FLOWRATOR [COND] (M8, M9, M10, M18, M19, M20, M21)		
81	B2114400 FLOWRATOR [COND] (M1, M3, M11, M13)		
101	0151M00049 VALVE, NXT (M5, M6, M15, M16)		
101	0151M00050 VALVE, NXT (M8, M9, M10, M18, M19, M20, M21)		
101	0151G00005 VALVE, NXT R-410A (M1, M2, M3, M4, M11, M12, M13, M14)		
111	0151M00019 REVERSING VALVE (M1, M3, M11, M13)		
111	0151R00069 REVERSING VALVE (M2, M4, M12, M14)		
111	0151R00071 REVERSING VALVE (M5, M6, M7, M8, M9, M10, M15, M16, M17, M18, M19, M20, M21)		
131	0130M00074 CUT-OUT SWITCH, HIGH PRESSURE		
141	0130M00075 CUT-OUT SWITCH, LOW PRESSURE		
181	B1226206 ACCUMULATOR (M1, M2, M3, M4, M11, M12, M13, M14)		
181	B1226207 ACCUMULATOR .875 (M5, M6, M7, M8, M9, M10, M15, M16, M17, M18, M19, M20, M21)		
201	0151M00049 VALVE, NXT (M5, M6, M15, M16)		
201	0151M00050 VALVE, NXT (M8, M9, M10, M18, M19, M20, M21)		
201	0151G00005 VALVE, NXT R-410A (M1, M2, M3, M4, M11, M12, M13, M14)		
211	20485201 BI-FLOW FILTER DRIER		

Control Panel / Blower Assembly

Image 1

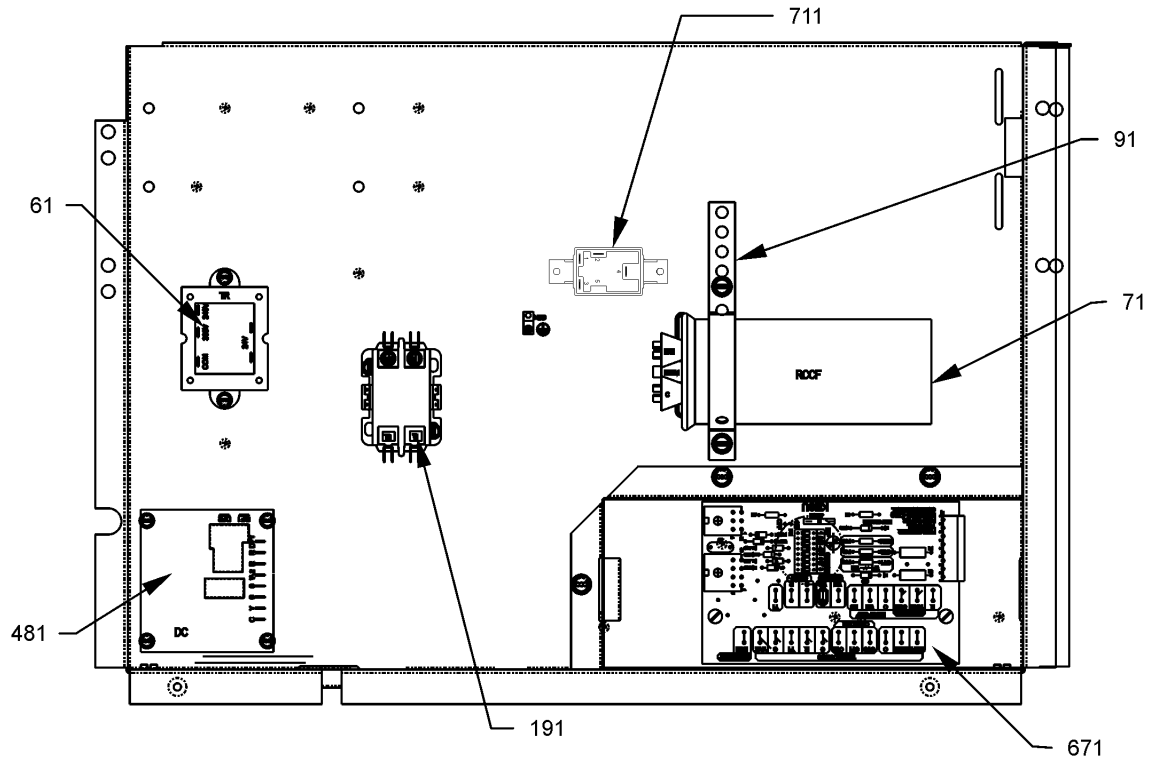
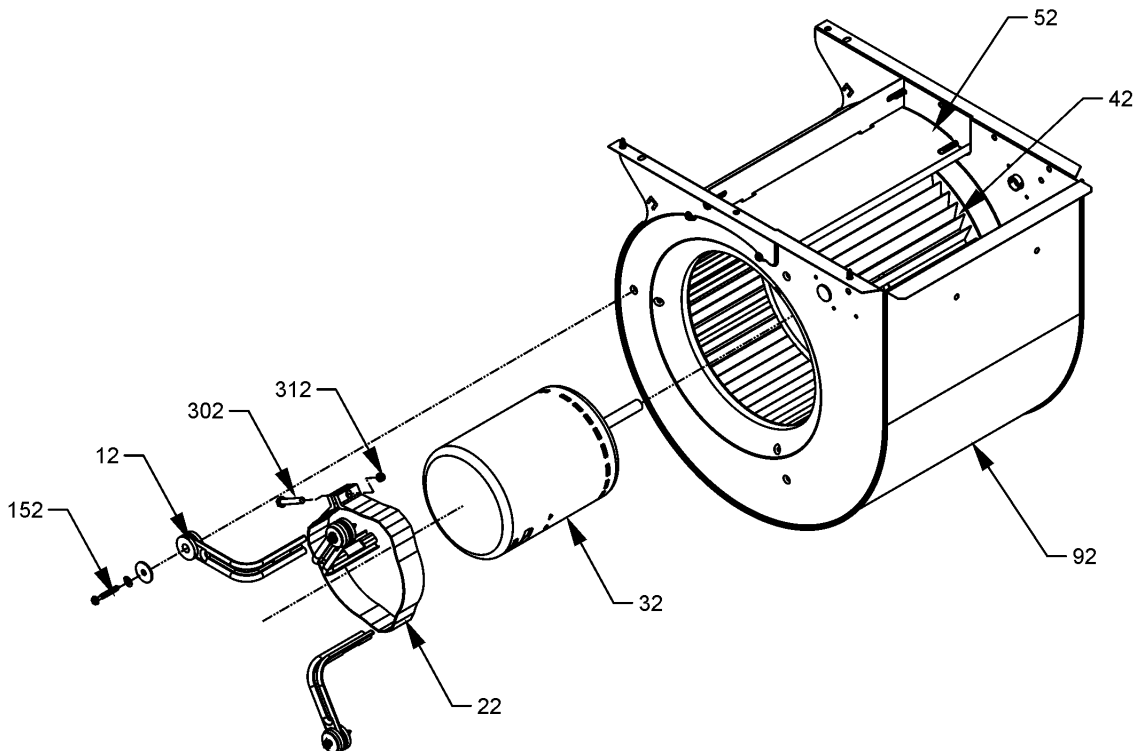


Image 2



Control Panel / Blower Assembly

Ref. Part

No: No: Description:

Ref. Part

No: No: Description:

Image 1:

61	0130M00138	TRANSFORMER 208/230, 24V
71	CAP050300440CS	CAP.5/30MFD/440V/DUAL RD (M9, M19)
71	CAP050400440CT	CAPACITOR 5/40/440V/DUAL RD (M1, M2, M3, M4, M10, M11, M12, M13, M14, M21)
71	CAP050450440CT	CAPACITOR 5/45/440V/DUAL RD (M5, M6, M7, M8, M15, M16, M17, M18)
71	CAP050800440RT	CAPACITOR 5/80/440V (M20)
91	20520901	CAPACITOR STRAP
191	CONT1P025024V	CONTACTOR 25 AMP, 1P, 24V (M1, M2, M3, M4, M5, M6, M11, M12, M13, M14, M15, M16)
191	CONT1P030024V	CONTACTOR 30 AMP, 1P, 24V (M7, M17)
191	CONT2P040024V	CONTACTOR 40 AMP, 2P, 24V (M8, M9, M10, M19, M21)
481	PCBDM133	DEFROST CONTROL BOARD
671	PCBEM102	PCB, ECM PRIMARY, VSTB (M1, M2, M3, M4, M5, M6, M7, M8, M9, M10)
711	B1370751	24V RELAY (M8, M9, M10, M18, M19, M20, M21)
NS	0259G00065	BLOWER HARNESS (M11, M12, M13, M14, M15, M16, M17)
NS	0259G00122	BLOWER HARNESS (M18, M19, M20, M21)
NS	BT1256505	RELAY, WCK (M18, M19, M20, M21)
NS	0259G00070	WIRE HARNESS, ELECTRIC HEAT (M11, M12, M13, M14, M15, M16, M17, M18, M19, M20, M21)
NS	0259G00071	WIRE HARNESS, ELECTRIC HEAT (M1, M2, M3, M4, M5, M6, M7, M8, M9, M10)
NS	B1378701	WIRE HARNESS, HIGH VOLTAGE (5-PIN ECM) (M1, M2, M3, M4, M5, M6, M7, M8, M9, M10)
NS	B1378700	WIRE HARNESS, LOW VOLTAGE (16-PIN ECM) (M1, M2, M3, M4, M5, M6, M7, M8, M9, M10)

Expanded Model Nomenclature

M1 - APH1524M41AC
M2 - APH1524M41AD
M3 - APH1530M41AC
M4 - APH1530M41AD
M5 - APH1536M41AC
M6 - APH1536M41AD
M7 - APH1543M41AC
M8 - APH1549M41AC
M9 - APH1549M41AD
M10 - APH1560M41AD
M11 - GPH1524M41AC
M12 - GPH1524M41AD
M13 - GPH1530M41AC
M14 - GPH1530M41AD
M15 - GPH1536M41AC
M16 - GPH1536M41AD
M17 - GPH1543M41AC
M18 - GPH1549M41AC
M19 - GPH1549M41AD
M20 - GPH1560M41AC
M21 - GPH1560M41AD

Image 2:

12	B1376857	MOTOR MOUNT ARM (QTY 3)
22	0121M00038	MOTOR MOUNT BAND
32	0131M00525	MOTOR - 1 HP PROGRAMMED SELEC (M20, M21)
32	0131M00534	MOTOR - 3/4 HP PROGRAMMED SELE (M18, M19)
32	0131M00536	MOTOR - 3/4 HP PROGRAMMED SELE (M17)
32	0131M00637	MOTOR-1 HP PROGRAMMED EON (M10)
32	0131M00632	MOTOR-1/2 HP PROGRAMMED EON (M3, M4, M5, M6)
32	0131M00633	MOTOR-1/2 HP PROGRAMMED EON (M1, M2)
32	0131M00542	MOTOR-1/2 HP PROGRAMMED SELEC (M15, M16)
32	0131M00543	MOTOR-1/2 HP PROGRAMMED SELEC (M11, M12)
32	0131M00544	MOTOR-1/2 HP PROGRAMMED SELEC (M13, M14)
32	0131M00635	MOTOR-3/4 HP PROGRAMMED EON (M7, M8, M9)
42	D6723303	BLOWER WHEEL
52	764742	BLOWER BLOCK-OFF
92	0271G00024	BLOWER HOUSING ASSY 10 X 9
152	M0250565	TC SCREW 1.25" (QTY 5)
302	B1393323	MACHINE SCREW HWH 1/4-20 X 1-1/2 BZ
312	B1393800	LOCKNUT, NYLON, INSERT 1/4, 20