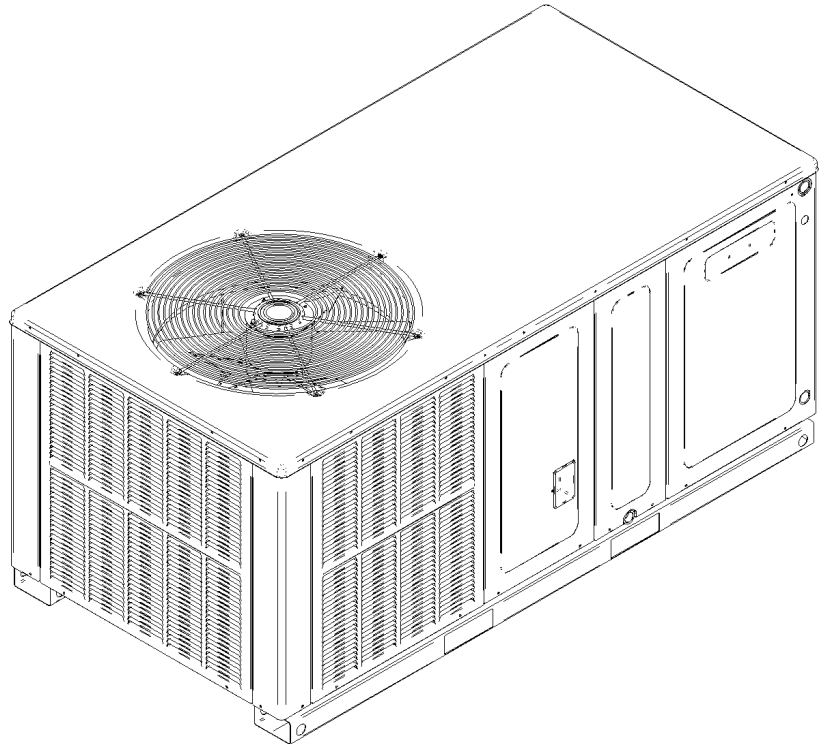


GPC14 "H" Series Package Cooling Unit

GPC1424H41AB
GPC1424H41AC
GPC1424H41BA
GPC1424H41CA
GPC1424H41DA
GPC1430H41AB
GPC1430H41AC
GPC1430H41BA
GPC1430H41CA
GPC1430H41DA
GPC1436H41AB
GPC1436H41BA
GPC1436H41CA
GPC1436H41DA
GPC1436H41DB
GPC1442H41AB
GPC1442H41AC
GPC1442H41BA
GPC1442H41CA
GPC1442H41DA
GPC1448H41AB
GPC1448H41AC
GPC1448H41BA
GPC1448H41CA
GPC1448H41DA
GPC1460H41AB
GPC1460H41BA
GPC1460H41CA
GPC1460H41DA



This manual is to be used by qualified technicians only.

This manual replaces RP-622D.

© 2010,2012-2014 Goodman Company, L.P. ♦ 5151 San Felipe St., Suite 500 ♦ Houston, TX 77056

Important Information

Index

Functional Parts List	3
Illustration and Parts	4 - 13

Views shown are for parts illustrations only, not servicing procedures

Rev E: GPC1436H41 DB Heater Kit Updates

Text Codes:

AR - As Required

NA - Not Available

NS - Not Shown

00000000 - See Note

QTY - Quantity Example (QTY 3) (If Quantity not shown, Quantity = 1)

M - Model Example (M1) (If M Code not shown, then part is used on all Models)

Expanded Model Nomenclature:

Example M1 - Model#1 M2 - Model#2 M3 - Model#3

Goodman Company, L.P. is not responsible for personal injury or property damage resulting from improper service. Review all service information before beginning repairs.

Warranty service must be performed by an authorized technician, using authorized factory parts. If service is required after the warranty expires, Goodman Company, L.P. also recommends contacting an authorized technician and using authorized factory parts.

Goodman Company, L.P. reserves the right to discontinue, or change at any time, specifications or designs without notice or without incurring obligations.

For assistance within the U.S.A. contact:

Consumer Affairs Department

Goodman Company, L.P.

7401 Security Way

Houston, Texas 77040

877-254-4729-Telephone

713-863-2382-Facsimile

For assistance outside the U.S.A. contact:

International Division

Goodman Company, L.P.

7401 Security Way

Houston, Texas 77040

713-861-2500-Telephone

713-863-2382-Facsimile

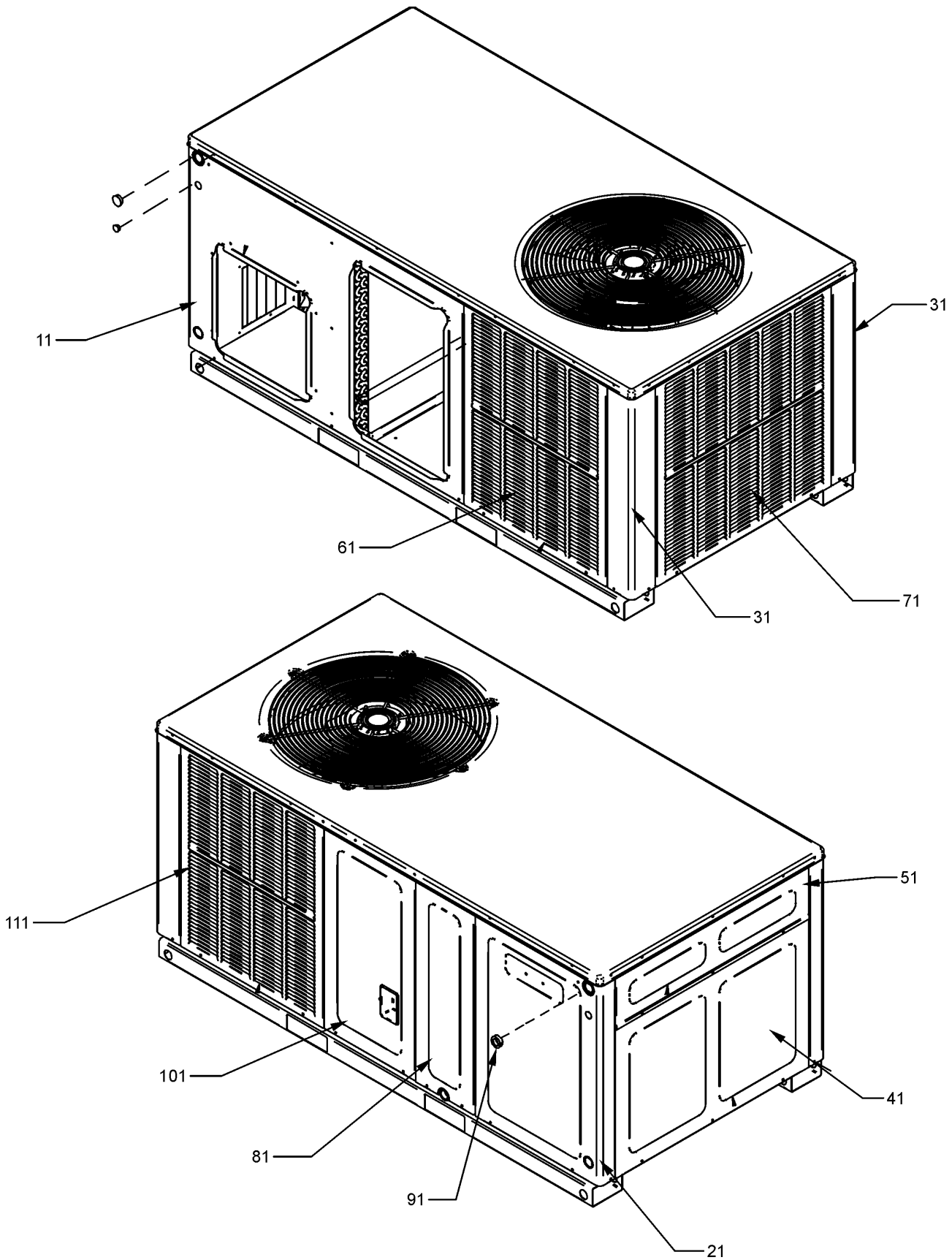
Functional Parts

Part

No: Description:

Part No:	Description:	Part No:	Description:
50N492ZV-ZAKM	2.0TONRECHI COMPR.4 LEGS (M4, M5)	0131M00485	PROGRAMMED MOTOR (M25)
B1368016	BLOWER WHEEL 10 X 8 (M1, M2, M3, M4, M5, M6, M7, M8, M9, M10, M11, M12, M13, M14, M15, M16, M17, M18, M19, M20, M21, M22, M23, M24, M25)	0131M00414	PROGRAMMED MOTOR (M4)
B1368054	BLOWER WHEEL 11 X 8 (M26, M27, M28, M29)	0131M00489	PROGRAMMED MOTOR (M10)
CAP050450440CT	CAP, 5/45 MFD/440V/DUAL RD (M4, M5, M11, M12, M13, M14, M15, M16, M17, M18, M19, M20, M21, M22, M23, M24, M25)	0131M00491	PROGRAMMED MOTOR (M20)
CAP050350440CS	CAPACITOR 5/35/440V (M1, M2, M3)	0131M00596	PROGRAMMED MOTOR (M14, M15)
CAP050400440CT	CAPACITOR 5/40/440V/DUAL RD (M6, M7, M8, M9, M10)	0131M00416	PROGRAMMED MOTOR (M9)
CAP050700440CT	CAPACITOR 5/70/440V/DUAL RD (M26, M27, M28, M29)	0130M00138	TRANSFORMER 208/230, 24V
ZP20K5EPFV130	COMPRESSOR 20000, 208/230/60/1 (M1, M2, M3)	Expanded Model Nomenclature	
ZP24K5EPFV130	COMPRESSOR 24000, 208/230/60/1 (M6, M7, M8, M9, M10)	M1 - GPC1424H41AB	
ZP31K5EPFV130	COMPRESSOR 31100, 208/230/60/1 (M11, M12, M13, M14, M15)	M2 - GPC1424H41AC	
ZP34K5EPFV130	COMPRESSOR 34500, 208/230/60/1 (M16, M17, M18, M19, M20)	M3 - GPC1424H41BA	
ZP39K5EPFV130	COMPRESSOR 39000, 208/230/60/1 (M21, M22, M23, M24, M25)	M4 - GPC1424H41CA	
ZP51K5EPFV130	COMPRESSOR 51000, 208/230/60/1 (M26, M27, M28, M29)	M5 - GPC1424H41DA	
0131M00061	COND MOTOR 1/4 HP, 1 SP, 8 PL (M11, M12, M13, M14, M15)	M6 - GPC1430H41AB	
0131M00429	COND MOTOR 1/4 HP, 1 SP, 6 PL (M16, M17, M18, M19, M20, M21, M22, M23, M24, M25, M26, M27, M28, M29)	M7 - GPC1430H41AC	
0131M00009P	COND MOTOR 1/6 HP, 1 SP, 8 PL (M1, M2, M3, M4, M5, M6, M7, M8, M9, M10)	M8 - GPC1430H41BA	
CONT1P025024V	CONTACTOR 25 AMP, 1P, 24V (M1, M2, M3, M4, M5, M6, M7, M8, M9, M10, M11, M12, M13, M14, M15)	M9 - GPC1430H41CA	
CONT1P030024V	CONTACTOR 30 AMP, 1P, 24V (M16, M17, M18, M19, M20, M21, M22, M23, M24, M25)	M10 - GPC1430H41DA	
CONT2P040024V	CONTACTOR 40 AMP, 2P, 24V (M26, M27, M28, M29)	M11 - GPC1436H41AB	
0130M00074	CUT-OUT SWITCH, HIGH PRESSURE (M4, M5, M26, M27, M28, M29)	M12 - GPC1436H41BA	
0150G00004	FAN BLADE (M16, M17, M18, M19, M20, M21, M22, M23, M24, M25, M26, M27, M28, M29)	M13 - GPC1436H41CA	
0150G00005	FAN BLADE (M1, M2, M3, M4, M5, M6, M7, M8, M9, M10)	M14 - GPC1436H41DA	
B1086765	FAN BLADE, TYPE 3 (M11, M12, M13, M14, M15)	M15 - GPC1436H41DB	
0131M00533	MOTOR - 3/4 HP PROGRAMMED SELE (M26, M27)	M16 - GPC1442H41AB	
0131M00532	MOTOR - 3/4 HP PROGRAMMED SELE (M21, M22, M23)	M17 - GPC1442H41AC	
0131M00549	MOTOR-1/2 HP PROGRAMMED SELEC (M16, M17, M18)	M18 - GPC1442H41BA	
0131M00546	MOTOR-1/2 HP PROGRAMMED SELEC (M1, M2, M3)	M19 - GPC1442H41CA	
0131M00547	MOTOR-1/2 HP PROGRAMMED SELEC (M6, M7, M8)	M20 - GPC1442H41DA	
0131M00548	MOTOR-1/2 HP PROGRAMMED SELEC (M11, M12)	M21 - GPC1448H41AB	
0131M00487	PROGRAMMED MOTOR (M5)	M22 - GPC1448H41AC	
0131M00423	PROGRAMMED MOTOR (M28)	M23 - GPC1448H41BA	
0131M00422	PROGRAMMED MOTOR (M24)	M24 - GPC1448H41CA	
0131M00495	PROGRAMMED MOTOR (M29)	M25 - GPC1448H41DA	
0131M00420	PROGRAMMED MOTOR (M19)	M26 - GPC1460H41AB	
0131M00418	PROGRAMMED MOTOR (M13)	M27 - GPC1460H41BA	
		M28 - GPC1460H41CA	
		M29 - GPC1460H41DA	

Cabinet Assembly



Cabinet Assembly

Ref. Part No: No:	Description:	Ref. Part No: No:	Description:
<i>Image 1:</i>		Expanded Model Nomenclature	
11	0121G00050PDG DUCT PANEL 27.5" (M1, M2, M3, M4, M5, M6, M7, M8, M9, M10, M11, M12, M13, M14, M15)	M1 -	GPC1424H41AB
11	0121G00051PDG DUCT PANEL 32.5" (M16, M17, M18, M19, M20)	M2 -	GPC1424H41AC
11	0121G00084PDG DUCT PANEL 36" (M21, M22, M23, M24, M25, M26, M27, M28, M29)	M3 -	GPC1424H41BA
21	0121G00521DGD CORNER PANEL 27.5" (M1, M2, M3, M4, M5, M6, M7, M8, M9, M10, M11, M12, M13, M14, M15)	M4 -	GPC1424H41CA
21	0121G00522DGD CORNER PANEL 32.5" (M16, M17, M18, M19, M20)	M5 -	GPC1424H41DA
21	0121G00523DGD CORNER PANEL 36" (M21, M22, M23, M24, M25, M26, M27, M28, M29)	M6 -	GPC1430H41AB
31	0121G00047PDGD CORNER POST 27.5" (M1, M2, M3, M4, M5, M6, M7, M8, M9, M10, M11, M12, M13, M14, M15)	M7 -	GPC1430H41AC
31	0121G00048PDGD CORNER POST 32.5" (M16, M17, M18, M19, M20)	M8 -	GPC1430H41BA
31	0121G00082PDGD CORNER POST 36" (M21, M22, M23, M24, M25, M26, M27, M28, M29)	M9 -	GPC1430H41CA
41	0121G00271DGD EXTERNAL BLOWER PANEL 27.5" (M1, M2, M3, M4, M5, M6, M7, M8, M9, M10, M11, M12, M13, M14, M15)	M10 -	GPC1430H41DA
41	0121G00272DGD EXTERNAL BLOWER PANEL 32.5" (M16, M17, M18, M19, M20)	M11 -	GPC1436H41AB
41	0121G00273DGD EXTERNAL BLOWER PANEL 36" (M21, M22, M23, M24, M25, M26, M27, M28, M29)	M12 -	GPC1436H41BA
51	0121G00276DGD EXTERNAL CONTROL BOX PANEL	M13 -	GPC1436H41CA
61	0121G00070PDGD LOUVERED PANEL 4 BANK 32.5" (M16, M17, M18, M19, M20)	M14 -	GPC1436H41DA
61	0121G00090PDGD LOUVERED PANEL 4 BANK 36" (M21, M22, M23, M24, M25, M26, M27, M28, M29)	M15 -	GPC1436H41DB
61	0121G00069PDGD PNL, LVR, 27.5" 4BANK (M1, M2, M3, M4, M5, M6, M7, M8, M9, M10, M11, M12, M13, M14, M15)	M16 -	GPC1442H41AB
71	0121G00072PDGD LOUVERED PANEL 5 BANK 27.5" (M1, M2, M3, M4, M5, M6, M7, M8, M9, M10, M11, M12, M13, M14, M15)	M17 -	GPC1442H41AC
71	0121G00073PDGD LOUVERED PANEL 5 BANK 32.5" (M16, M17, M18, M19, M20)	M18 -	GPC1442H41BA
71	0121G00091PDGD PNL, 5 BANK 36" LVR (M21, M22, M23, M24, M25, M26, M27, M28, M29)	M19 -	GPC1442H41CA
81	0121G00065PDGD EVAP PANEL 8.75" X 27.5" (M1, M2, M3, M4, M5, M6, M7, M8, M9, M10, M11, M12, M13, M14, M15)	M20 -	GPC1442H41DA
81	0121G00066PDGD EVAP PANEL 8.75" X 32.5" (M16, M17, M18, M19, M20)	M21 -	GPC1448H41AB
81	0121G00089PDGD PNL, 36" EXT EVAP RMV (M21, M22, M23, M24, M25, M26, M27, M28, M29)	M22 -	GPC1448H41AC
91	B1392012 GROMMET / HS 1.0 - .79 (QTY 3)	M23 -	GPC1448H41BA
101	0121G00062PDGD COMPRESSOR PANEL 13.68" X 27.50" (M1, M2, M3, M4, M5, M6, M7, M8, M9, M10, M11, M12, M13, M14, M15)	M24 -	GPC1448H41CA
101	0121G00060PDGD COMPRESSOR PANEL 8.75" X 32.50" (M16, M17, M18, M19, M20)	M25 -	GPC1448H41DA
101	0121G00087PDGD COMPRESSOR PANEL 8.75" X 36" (M21, M22, M23, M24, M25, M26, M27, M28, M29)	M26 -	GPC1460H41AB
111	0121G00069PDGD LOUVERED PANEL 4 BANK 27.5" (M1, M2, M3, M4, M5, M6, M7, M8, M9, M10, M11, M12, M13, M14, M15)	M27 -	GPC1460H41BA
111	0121G00091PDGD LOUVERED PANEL 5 BANK 36" (M21, M22, M23, M24, M25, M26, M27, M28, M29)	M28 -	GPC1460H41CA
111	0121G00073PDGD PNL, LVR, 32.5" 5BANK (M16, M17, M18, M19, M20)	M29 -	GPC1460H41DA

Chassis Assembly

Image 1

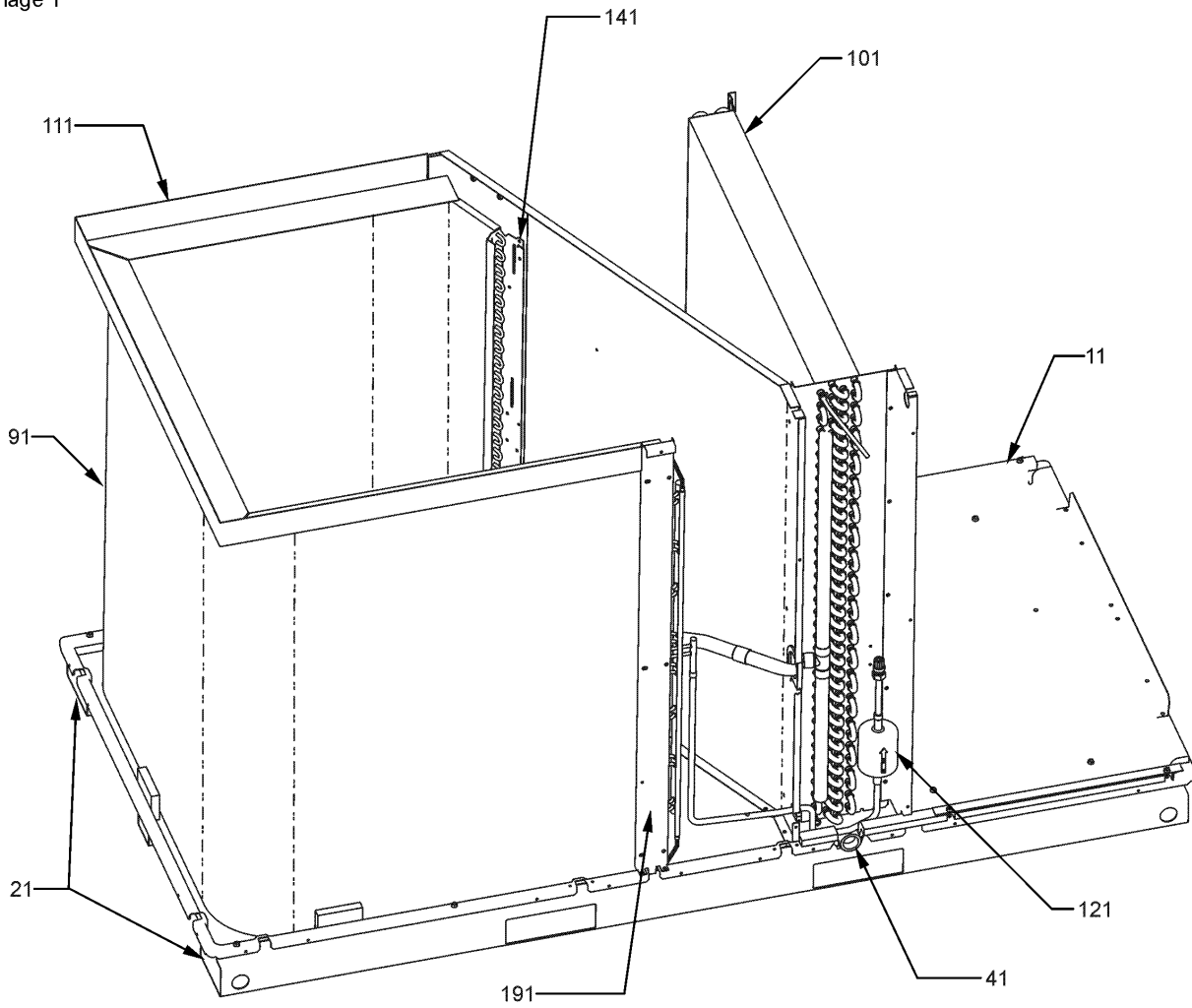
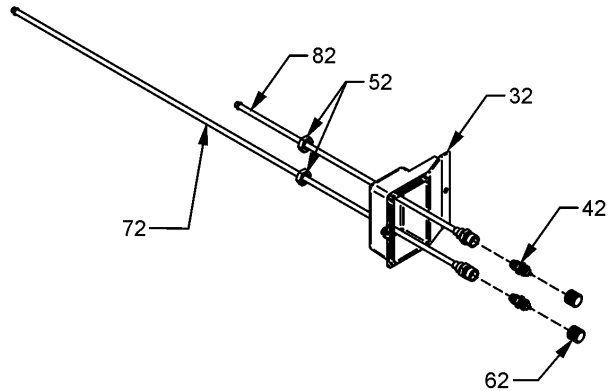


Image 2



Chassis Assembly

Ref. Part No: No:	Description:	Ref. Part No: No:	Description:																													
Image 1:		Image 1:																														
11	0121G00046P INSULATED ASSY, BASEPAN	NS	0162M00164 FLOWRATOR [EVAP] (M13, M14, M15)																													
21	0121G00044PRF BASEPAN RAIL (QTY 2)	NS	0162M00165 FLOWRATOR [EVAP] (M19, M20)																													
41	0161G00000P PAN, DRIP	NS	0162M00166 FLOWRATOR [EVAP] (M24, M25)																													
91	0201G00182 CONDENSER COIL ASSY (M1, M2, M3, M4, M5)	NS	0162M00192 FLOWRATOR [EVAP] (M9, M10)																													
91	0201G00188 CONDENSER COIL ASSY (M16, M17, M18, M19, M20)	Image 2:																														
91	0201G00190 CONDENSER COIL ASSY (M21, M22, M23, M24, M25)	32	0161G00008 ACCESS-FITTING BOX																													
91	0201G00245 CONDENSER COIL ASSY (M26)	42	B1373315 ACCESS FITTING (QTY 2)																													
91	0201G00268 CONDENSER COIL ASSY (M27, M28, M29)	52	0163G00000P FASTEST FITTING NUT (QTY 2)																													
91	0201G00183 TUBING ASSY, COND COIL (M6, M7, M8, M9, M10, M11, M12, M13, M14, M15)	62	0163M00175 CAP WITH O-RING (QTY 2)																													
101	0202G00300 TUBING ASSY, EVAP COIL (M1, M2)	72	0210G00031P PROCESS TUBE ASSY-SUCTION (M1, M2, M3, M4, M5, M6, M7, M8, M9, M10, M11, M12, M13, M16, M17, M18, M19, M20, M21, M22, M23, M24, M25, M26, M27, M28, M29)																													
101	0202G00302 TUBING ASSY, EVAP COIL (M26)	72	0210G00617 PROCESS TUBE ASSY-SUCTION (M14, M15)																													
101	0202G00306 TUBING ASSY, EVAP COIL (M16, M17)	82	0210G00030P PROCESS TUBE ASSY-LIQUID (M1, M6, M11, M16, M21)																													
101	0202G00332 TUBING ASSY, EVAP COIL (M21, M22)	82	0210G00618 PROCESS TUBE ASSY-LIQUID (M14, M15)																													
101	0202G00333 TUBING ASSY, EVAP COIL (M6, M7)	82	0210G00390 PROCESS TUBING ASSY - LIQUID (M2, M3, M4, M5, M7, M8, M9, M10, M12, M13, M17, M18, M19, M20, M22, M23, M24, M25, M26, M27, M28, M29)																													
101	0202G00336 TUBING ASSY, EVAP COIL (M11)	Expanded Model Nomenclature																														
101	0202G00351 TUBING ASSY, EVAP COIL (M3)	<table border="1"> <tr><td>M1 - GPC1424H41AB</td></tr> <tr><td>M2 - GPC1424H41AC</td></tr> <tr><td>M3 - GPC1424H41BA</td></tr> <tr><td>M4 - GPC1424H41CA</td></tr> <tr><td>M5 - GPC1424H41DA</td></tr> <tr><td>M6 - GPC1430H41AB</td></tr> <tr><td>M7 - GPC1430H41AC</td></tr> <tr><td>M8 - GPC1430H41BA</td></tr> <tr><td>M9 - GPC1430H41CA</td></tr> <tr><td>M10 - GPC1430H41DA</td></tr> <tr><td>M11 - GPC1436H41AB</td></tr> <tr><td>M12 - GPC1436H41BA</td></tr> <tr><td>M13 - GPC1436H41CA</td></tr> <tr><td>M14 - GPC1436H41DA</td></tr> <tr><td>M15 - GPC1436H41DB</td></tr> <tr><td>M16 - GPC1442H41AB</td></tr> <tr><td>M17 - GPC1442H41AC</td></tr> <tr><td>M18 - GPC1442H41BA</td></tr> <tr><td>M19 - GPC1442H41CA</td></tr> <tr><td>M20 - GPC1442H41DA</td></tr> <tr><td>M21 - GPC1448H41AB</td></tr> <tr><td>M22 - GPC1448H41AC</td></tr> <tr><td>M23 - GPC1448H41BA</td></tr> <tr><td>M24 - GPC1448H41CA</td></tr> <tr><td>M25 - GPC1448H41DA</td></tr> <tr><td>M26 - GPC1460H41AB</td></tr> <tr><td>M27 - GPC1460H41BA</td></tr> <tr><td>M28 - GPC1460H41CA</td></tr> <tr><td>M29 - GPC1460H41DA</td></tr> </table>		M1 - GPC1424H41AB	M2 - GPC1424H41AC	M3 - GPC1424H41BA	M4 - GPC1424H41CA	M5 - GPC1424H41DA	M6 - GPC1430H41AB	M7 - GPC1430H41AC	M8 - GPC1430H41BA	M9 - GPC1430H41CA	M10 - GPC1430H41DA	M11 - GPC1436H41AB	M12 - GPC1436H41BA	M13 - GPC1436H41CA	M14 - GPC1436H41DA	M15 - GPC1436H41DB	M16 - GPC1442H41AB	M17 - GPC1442H41AC	M18 - GPC1442H41BA	M19 - GPC1442H41CA	M20 - GPC1442H41DA	M21 - GPC1448H41AB	M22 - GPC1448H41AC	M23 - GPC1448H41BA	M24 - GPC1448H41CA	M25 - GPC1448H41DA	M26 - GPC1460H41AB	M27 - GPC1460H41BA	M28 - GPC1460H41CA	M29 - GPC1460H41DA
M1 - GPC1424H41AB																																
M2 - GPC1424H41AC																																
M3 - GPC1424H41BA																																
M4 - GPC1424H41CA																																
M5 - GPC1424H41DA																																
M6 - GPC1430H41AB																																
M7 - GPC1430H41AC																																
M8 - GPC1430H41BA																																
M9 - GPC1430H41CA																																
M10 - GPC1430H41DA																																
M11 - GPC1436H41AB																																
M12 - GPC1436H41BA																																
M13 - GPC1436H41CA																																
M14 - GPC1436H41DA																																
M15 - GPC1436H41DB																																
M16 - GPC1442H41AB																																
M17 - GPC1442H41AC																																
M18 - GPC1442H41BA																																
M19 - GPC1442H41CA																																
M20 - GPC1442H41DA																																
M21 - GPC1448H41AB																																
M22 - GPC1448H41AC																																
M23 - GPC1448H41BA																																
M24 - GPC1448H41CA																																
M25 - GPC1448H41DA																																
M26 - GPC1460H41AB																																
M27 - GPC1460H41BA																																
M28 - GPC1460H41CA																																
M29 - GPC1460H41DA																																
101	0202G00352 TUBING ASSY, EVAP COIL (M12)																															
101	0202G00354 TUBING ASSY, EVAP COIL (M18)																															
101	0202G00355 TUBING ASSY, EVAP COIL (M23)																															
101	0202G00373 TUBING ASSY, EVAP COIL (M8)																															
101	0202G00381 TUBING ASSY, EVAP COIL (M27)																															
101	0202G00465 TUBING ASSY, EVAP COIL (M4, M5)																															
101	0202G00468 TUBING ASSY, EVAP COIL (M13, M14, M15)																															
101	0202G00470 TUBING ASSY, EVAP COIL (M19, M20)																															
101	0202G00477 TUBING ASSY, EVAP COIL (M9, M10)																															
101	0202G00478 TUBING ASSY, EVAP COIL (M24, M25)																															
101	0202G00518 TUBING ASSY, EVAP COIL (M28, M29)																															
111	0121G00368 CONDENSER COIL BLOCKOFF (M1, M2, M3, M4, M5, M6, M7, M8, M9, M10, M11, M12, M13, M14, M15)																															
111	0121G00372 CONDENSER COIL BLOCKOFF (M16, M17, M18, M19, M20, M21, M22, M23, M24, M25, M27, M28, M29)																															
121	B1219212 SINGLE-FLOW FILTER DRIER, STEEL (M1, M2, M3, M4, M5, M6, M7, M8, M9, M10, M11, M12, M13, M14, M15)																															
121	B1219225 SINGLE-FLOW FILTER DRIER, STEEL (M16, M17, M18, M19, M20, M21, M22, M23, M24, M25, M26, M27, M28, M29)																															
141	0121G00365 PARTITION EXTENSION PANEL (M21, M22, M23, M24, M25)																															
191	0121G00045P POST 27.5" (M1, M2, M3, M4, M5, M6, M7, M8, M9, M10, M11, M12, M13, M14, M15)																															
191	0121G00079P POST 32.5" (M16, M17, M18, M19, M20)																															
191	0121G00083P POST 36" (M21, M22, M23, M24, M25, M26, M27, M28, M29)																															
NS	0130M00074 CUT-OUT SWITCH, HIGH PRESSURE (M4, M5, M26, M27, M28, M29)																															
NS	0121G00043P EVAP DRIP SHIELD (M1, M2, M6, M7, M11, M16, M17, M21, M22, M26)																															
NS	0128G00052 EVAP DRIP SHIELD (M3, M4, M5, M8, M9, M10, M12, M13, M14, M15, M18, M19, M20, M23, M24, M25, M27, M28, M29)																															
NS	0162M00197 FLOWRATOR (M28, M29)																															
NS	0162M00111 FLOWRATOR .057 (M1, M2)																															
NS	0162M00017P FLOWRATOR .062 (M6, M7)																															
NS	0162M00053 FLOWRATOR .068 (M11)																															
NS	0162M00012P FLOWRATOR .071 [COND] (M26)																															
NS	0162M00109 FLOWRATOR .072 (M16, M17)																															
NS	0162M00093 FLOWRATOR .088 (M26)																															
NS	0162M00147 FLOWRATOR [COND] (M21, M22)																															
NS	0162M00162 FLOWRATOR [EVAP] (M4, M5)																															

Compressor and Top Panel Assembly

Image 1

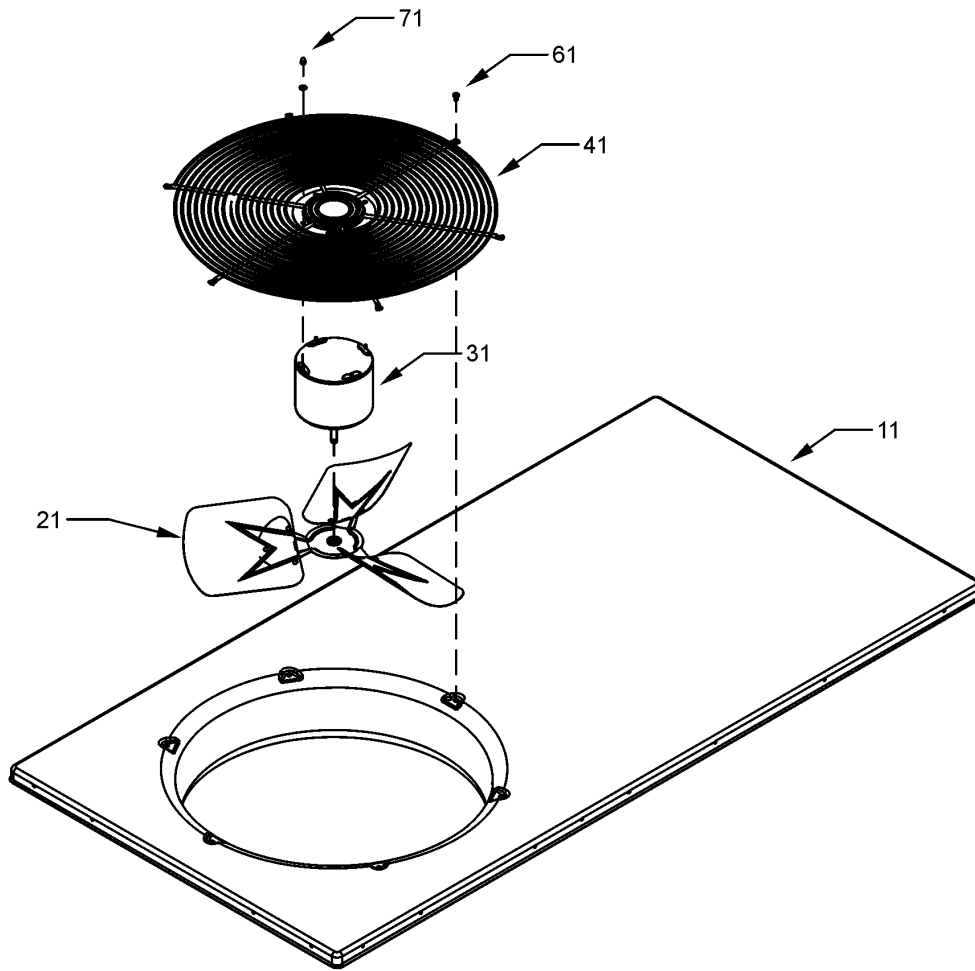
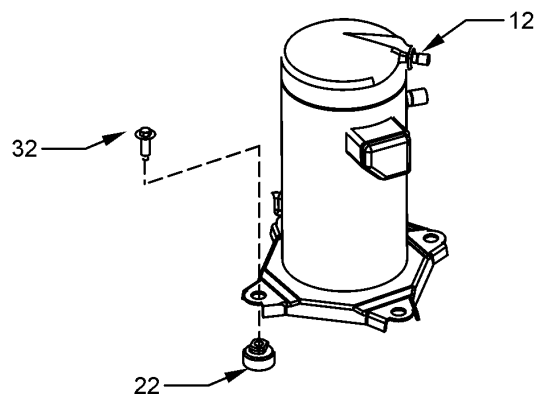


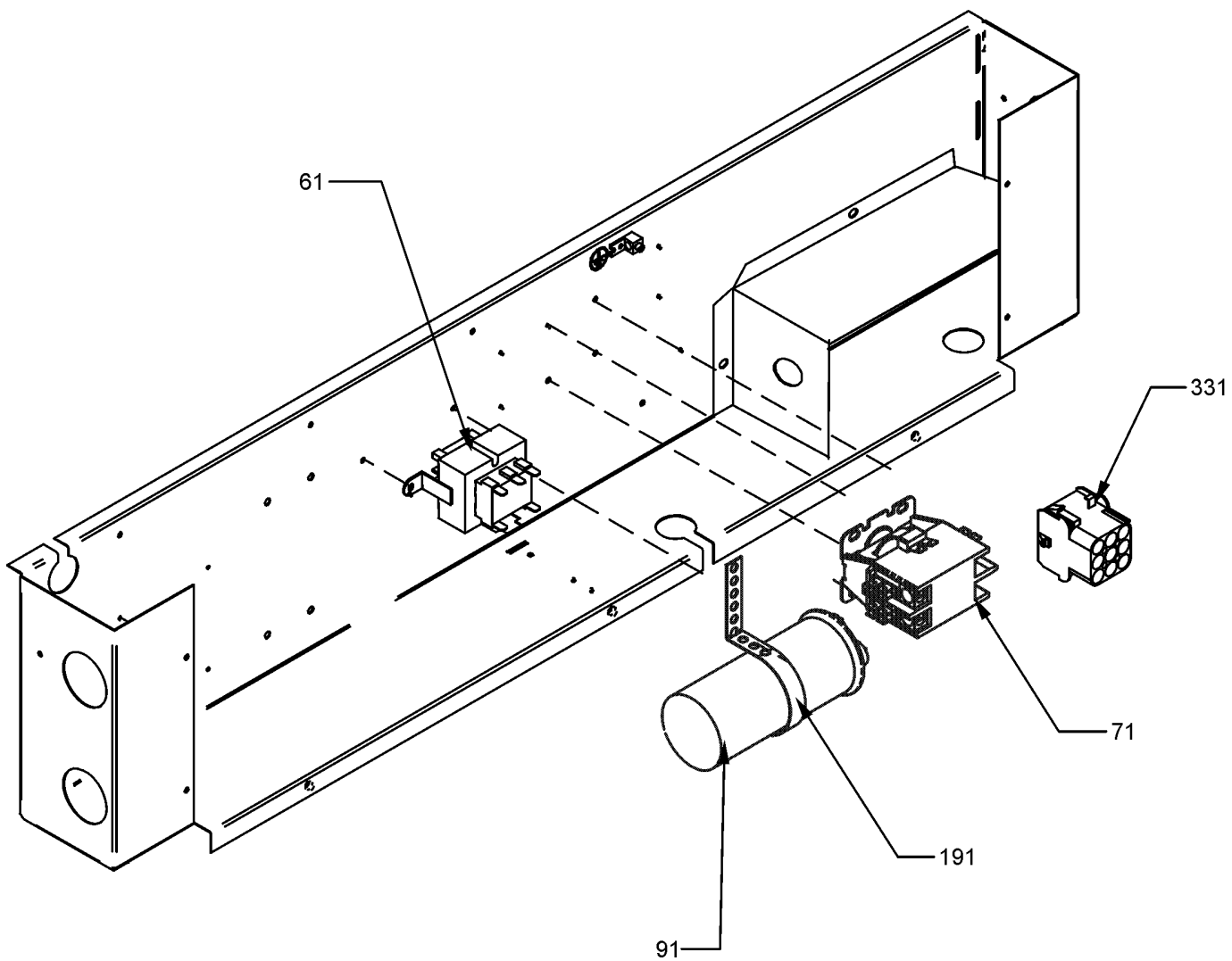
Image 2



Compressor and Top Panel Assembly

Ref. Part No: No:	Description:	Ref. Part No: No:	Description:
Image 1:		Expanded Model Nomenclature	
11	0121G00274DG TOP PANEL PAINTED	M1	GPC1424H41AB
21	0150G00004 FAN BLADE (M16, M17, M18, M19, M20, M21, M22, M23, M24, M25, M26, M27, M28, M29)	M2	GPC1424H41AC
21	0150G00005 FAN BLADE (M1, M2, M3, M4, M5, M6, M7, M8, M9, M10)	M3	GPC1424H41BA
21	B1086765 FAN BLADE, TYPE 3 (M11, M12, M13, M14, M15)	M4	GPC1424H41CA
31	0131M00061 COND MOTOR 1/4 HP, 1 SP, 8 PL (M11, M12, M13, M14, M15)	M5	GPC1424H41DA
31	0131M00429 COND MOTOR 1/4 HP, 1 SP, 6 PL (M16, M17, M18, M19, M20, M21, M22, M23, M24, M25, M26, M27, M28, M29)	M6	GPC1430H41AB
31	0131M00009P COND MOTOR 1/6 HP, 1 SP, 8 PL (M1, M2, M3, M4, M5, M6, M7, M8, M9, M10)	M7	GPC1430H41AC
41	0152G00003 FAN GRILLE	M8	GPC1430H41BA
61	M0221817 SMALL SCREW (QTY 7)	M9	GPC1430H41CA
71	0163M00006P ACORN NUT 5/16 HEX BLACK (QTY 4)	M10	GPC1430H41DA
NS	17788000083F PVC CONDUIT 8.25"	M11	GPC1436H41AB
Image 2:		M12	GPC1436H41BA
12	50N492ZV-ZAKM 2.0TONRECHI COMPR.4 LEGS (M4, M5)	M13	GPC1436H41CA
12	ZP20K5EPFV130 COMPRESSOR 20000, 208/230/60/1 (M1, M2, M3)	M14	GPC1436H41DA
12	ZP24K5EPFV130 COMPRESSOR 24000, 208/230/60/1 (M6, M7, M8, M9, M10)	M15	GPC1436H41DB
12	ZP31K5EPFV130 COMPRESSOR 31100, 208/230/60/1 (M11, M12, M13, M14, M15)	M16	GPC1442H41AB
12	ZP34K5EPFV130 COMPRESSOR 34500, 208/230/60/1 (M16, M17, M18, M19, M20)	M17	GPC1442H41AC
12	ZP39K5EPFV130 COMPRESSOR 39000, 208/230/60/1 (M21, M22, M23, M24, M25)	M18	GPC1442H41BA
12	ZP51K5EPFV130 COMPRESSOR 51000, 208/230/60/1 (M26, M27, M28, M29)	M19	GPC1442H41CA
22	B1339530 COMPRESSOR GROMMET (M1, M2, M3, M6, M7, M8, M9, M10)	M20	GPC1442H41DA
22	B1339533 COMPRESSOR GROMMET (M11, M12, M13, M14, M15, M16, M17, M18, M19, M20, M21, M22, M23, M24, M25, M26, M27, M28, M29)	M21	GPC1448H41AB
22	60140209 GROMMET - RECHI COMPRESSOR (M4, M5)	M22	GPC1448H41AC
32	0163M00186 SCREW-SHOULDER TF (M4, M5)	M23	GPC1448H41BA
32	M0221641 TF SHOULDER SCREW (M1, M2, M3, M6, M7, M8, M9, M10, M11, M12, M13, M14, M15, M16, M17, M18, M19, M20, M21, M22, M23, M24, M25, M26, M27, M28, M29)	M24	GPC1448H41CA
NS	0159G00004 COMPRESSOR SCROLL HARNESS (M1, M2, M3, M6, M7, M8, M9, M10, M11, M12, M13, M14, M15, M16, M17, M18, M19, M20, M21, M22, M23, M24, M25, M26, M27, M28, M29)	M25	GPC1448H41DA
		M26	GPC1460H41AB
		M27	GPC1460H41BA
		M28	GPC1460H41CA
		M29	GPC1460H41DA

Control Box Assembly



Control Box Assembly

Ref. Part No:	Part No:	Description:	Ref. Part No:	Part No:	Description:
---------------	----------	--------------	---------------	----------	--------------

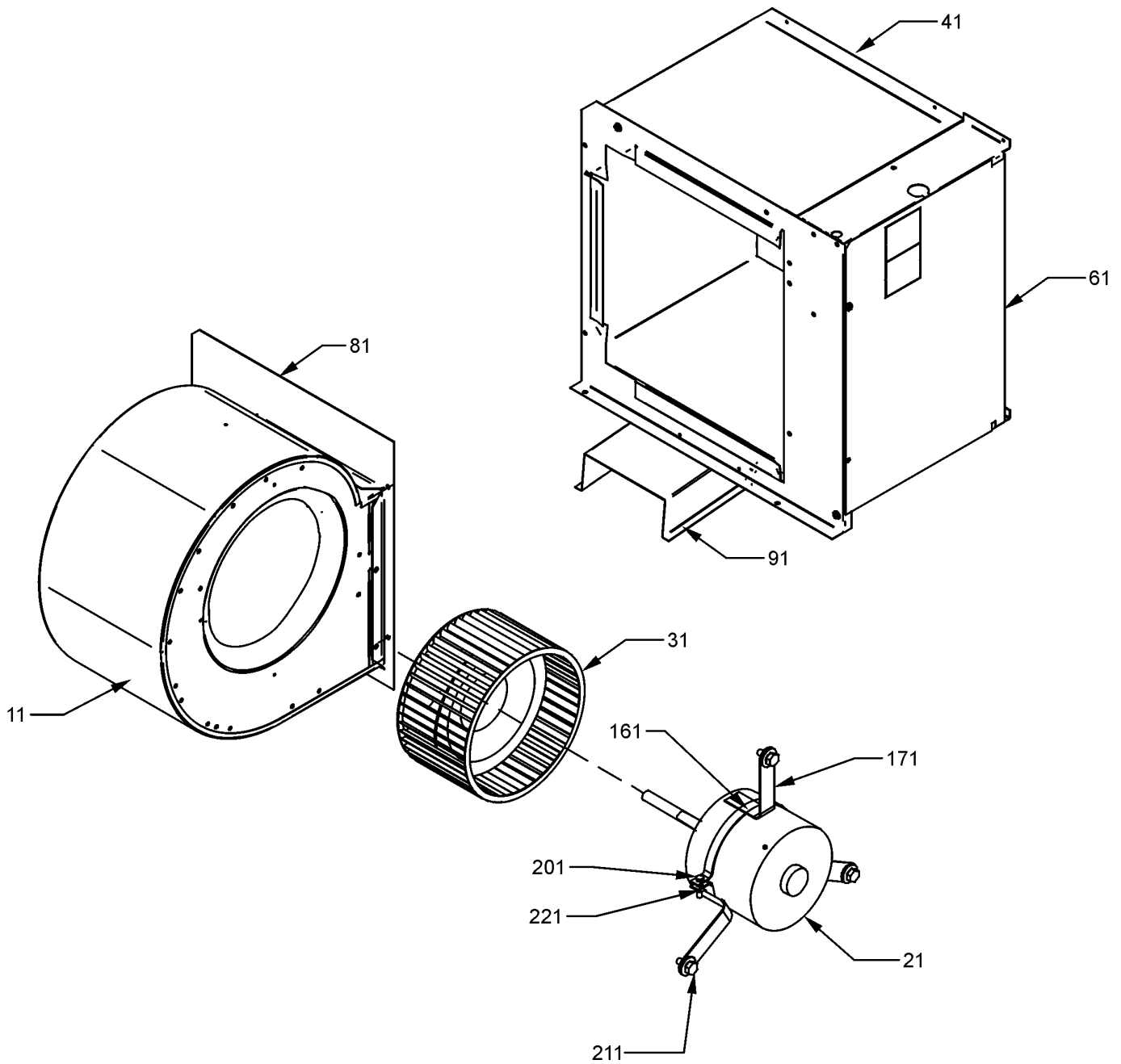
Image 1:

61	0130M00138	TRANSFORMER 208/230, 24V
71	CONT1P025024V	CONTACTOR 25 AMP, 1P, 24V (M1, M2, M3, M4, M5, M6, M7, M8, M9, M10, M11, M12, M13, M14, M15)
71	CONT1P030024V	CONTACTOR 30 AMP, 1P, 24V (M16, M17, M18, M19, M20, M21, M22, M23, M24, M25)
71	CONT2P040024V	CONTACTOR 40 AMP, 2P, 24V (M26, M27, M28, M29)
91	CAP050450440CT	CAP, 5/45 MFD/440V/DUAL RD (M4, M5, M11, M12, M13, M14, M15, M16, M17, M18, M19, M20, M21, M22, M23, M24, M25)
91	CAP050350440CS	CAPACITOR 5/35/440V (M1, M2, M3)
91	CAP050400440CT	CAPACITOR 5/40/440V/DUAL RD (M6, M7, M8, M9, M10)
91	CAP050700440CT	CAPACITOR 5/70/440V/DUAL RD (M26, M27, M28, M29)
191	20520901	CAPACITOR STRAP
331	0259G00021	WIRE HARNESS, ELECTRIC HEAT

Expanded Model Nomenclature

- M1 - GPC1424H41AB
- M2 - GPC1424H41AC
- M3 - GPC1424H41BA
- M4 - GPC1424H41CA
- M5 - GPC1424H41DA
- M6 - GPC1430H41AB
- M7 - GPC1430H41AC
- M8 - GPC1430H41BA
- M9 - GPC1430H41CA
- M10 - GPC1430H41DA
- M11 - GPC1436H41AB
- M12 - GPC1436H41BA
- M13 - GPC1436H41CA
- M14 - GPC1436H41DA
- M15 - GPC1436H41DB
- M16 - GPC1442H41AB
- M17 - GPC1442H41AC
- M18 - GPC1442H41BA
- M19 - GPC1442H41CA
- M20 - GPC1442H41DA
- M21 - GPC1448H41AB
- M22 - GPC1448H41AC
- M23 - GPC1448H41BA
- M24 - GPC1448H41CA
- M25 - GPC1448H41DA
- M26 - GPC1460H41AB
- M27 - GPC1460H41BA
- M28 - GPC1460H41CA
- M29 - GPC1460H41DA

Blower Assembly



Blower Assembly

Ref. Part No: No:	Description:	Ref. Part No: No:	Description:
Image 1:		Expanded Model Nomenclature	
11	10324248	BLOWER HOUSING 10 X 8 (M1, M2, M3, M4, M5, M6, M7, M8, M9, M10, M11, M12, M13, M14, M15, M16, M17, M18, M19, M20, M21, M22, M23, M24, M25)	M1 - GPC1424H41AB M2 - GPC1424H41AC M3 - GPC1424H41BA M4 - GPC1424H41CA M5 - GPC1424H41DA M6 - GPC1430H41AB M7 - GPC1430H41AC M8 - GPC1430H41BA M9 - GPC1430H41CA M10 - GPC1430H41DA M11 - GPC1436H41AB M12 - GPC1436H41BA M13 - GPC1436H41CA M14 - GPC1436H41DA M15 - GPC1436H41DB M16 - GPC1442H41AB M17 - GPC1442H41AC M18 - GPC1442H41BA M19 - GPC1442H41CA M20 - GPC1442H41DA M21 - GPC1448H41AB M22 - GPC1448H41AC M23 - GPC1448H41BA M24 - GPC1448H41CA M25 - GPC1448H41DA
11	0271G00017	BLOWER HOUSING 11 X 8 (M26, M27, M28, M29)	M26 - GPC1460H41AB M27 - GPC1460H41BA M28 - GPC1460H41CA M29 - GPC1460H41DA
21	0131M00532	MOTOR - 3/4 HP PROGRAMMED SELE (M21, M22, M23)	
21	0131M00533	MOTOR - 3/4 HP PROGRAMMED SELE (M26, M27)	
21	0131M00546	MOTOR-1/2 HP PROGRAMMED SELEC (M1, M2, M3)	
21	0131M00547	MOTOR-1/2 HP PROGRAMMED SELEC (M6, M7, M8)	
21	0131M00548	MOTOR-1/2 HP PROGRAMMED SELEC (M11, M12)	
21	0131M00549	MOTOR-1/2 HP PROGRAMMED SELEC (M16, M17, M18)	
21	0131M00414	PROGRAMMED MOTOR (M4)	
21	0131M00416	PROGRAMMED MOTOR (M9)	
21	0131M00418	PROGRAMMED MOTOR (M13)	
21	0131M00420	PROGRAMMED MOTOR (M19)	
21	0131M00422	PROGRAMMED MOTOR (M24)	
21	0131M00423	PROGRAMMED MOTOR (M28)	
21	0131M00485	PROGRAMMED MOTOR (M25)	
21	0131M00487	PROGRAMMED MOTOR (M5)	
21	0131M00489	PROGRAMMED MOTOR (M10)	
21	0131M00491	PROGRAMMED MOTOR (M20)	
21	0131M00495	PROGRAMMED MOTOR (M29)	
21	0131M00596	PROGRAMMED MOTOR (M14, M15)	
31	B1368016	BLOWER WHEEL 10 X 8 (M1, M2, M3, M4, M5, M6, M7, M8, M9, M10, M11, M12, M13, M14, M15, M16, M17, M18, M19, M20, M21, M22, M23, M24, M25)	
31	B1368054	BLOWER WHEEL 11 X 8 (M26, M27, M28, M29)	
41	0270G00025P	TRANSITION DUCT ASSY-ALL	
61	0121G00039P	HEATER KIT COVER	
81	0121G00128P	BLOWER MOUNT (M26, M27, M28, M29)	
81	0121G00035P	BLOWER MOUNT 10 X 8 (M1, M2, M3, M4, M5, M6, M7, M8, M9, M10, M11, M12, M13, M14, M15, M16, M17, M18, M19, M20, M21, M22, M23, M24, M25)	
91	0121G00040P	BLOWER SUPPORT	
161	0121M00038	MOTOR MOUNT BAND	
171	B1376853	MOTOR MOUNT ARM (M1, M2, M3, M4, M5, M6, M7, M8, M9, M10, M11, M12, M13, M14, M15, M16, M17, M18, M19, M20, M21, M22, M23, M24, M25)	
171	B1376857	MOTOR MOUNT ARM (M26, M27, M28, M29)	
201	B1393323	MACHINE SCREW HWH 1/4-20 X 1-1/2 BZ	
211	M0250565	TC SCREW 1.25" (QTY 3)	
221	B1393800	LOCKNUT, NYLON, INSERT 1/4, 20	
NS	C6121810	BLOWER CUT-OFF (M1, M2, M3, M4, M5, M6, M7, M8, M9, M10, M11, M12, M13, M14, M15, M16, M17, M18, M19, M20, M21, M22, M23, M24, M25)	
NS	2964700	BLOWER CUT-OFF 11 X 8 (M26, M27, M28, M29)	