



**3", 4", 6" & 8"  
Model H Series  
Alarm Check Valve  
Installation  
and  
Maintenance Guide**

4077 AIRPARK DRIVE • STANDISH, MICHIGAN 48658  
PHONE 989-846-4583 • 800-248-0278  
FAX 989-846-9231  
[www.globesprinkler.com](http://www.globesprinkler.com)

# GLOBE ALARM CHECK VALVE INSTALLATION AND MAINTENANCE GUIDE

## Table of Contents

Globe Alarm Check Valves	
General Description	1
Physical Data	2
3", 4" & 6" Alarm Check Valve Assembly and Parts List	3
8" Alarm Check Valve Assembly and Parts List	3
3" Model "H" Series Vertical Position/Variable Pressure Trim	6-7
3" Model "H" Series Vertical Position/Constant Pressure Trim	8-9
3" Model "H" Series Horizontal Position/Variable Pressure Trim	10-11
3" Model "H" Series Horizontal Position/Constant Pressure Trim	12-13
4" Model "H" Series Vertical Position/Variable Pressure Trim	14-15
4" Model "H" Series Vertical Position/Constant Pressure Trim	16-17
4" Model "H" Series Horizontal Position/Variable Pressure Trim	18-19
4" Model "H" Series Horizontal Position/Constant Pressure Trim	20-21
6" Model "H" Series Vertical Position/Variable Pressure Trim	22-23
6" Model "H" Series Vertical Position/Constant Pressure Trim	24-25
6" Model "H" Series Horizontal Position/Variable Pressure Trim	26-27
6" Model "H" Series Horizontal Position/Constant Pressure Trim	28-29
8" Model "H" Series Vertical Position/Variable Pressure Trim	30-31
8" Model "H" Series Vertical Position/Constant Pressure Trim	32-33
Optional Alarm Pressure Switch Trim	34
Pressure Relief Valve for use in Gridded Systems	34
Testing	4
Maintenance	5

# **GLOBE ALARM CHECK VALVE INSTALLATION AND MAINTENANCE GUIDE**

## **GENERAL DESCRIPTION**

Globe Fire Sprinkler Corporation Alarm Check Valves are used in wet pipe fire sprinkler systems. They primarily serve a dual purpose in that they prevent a reverse flow of water through their bodies (non-return) and also provide for the use of a hydraulic fire alarm which is not dependent upon an electrical power supply for its operation. Through the use of a hydraulic retard chamber a time delay is provided to eliminate potential false alarms caused by fluctuating water supply pressures. Where constant pressure water supplies are used the retard chamber (time delay) is not necessary. By incorporating the use of electrical pressure switches, other supplemental alarms, annunciators, etc. may also be used.

Globe Alarm Check Valves are designed and manufactured to the standards and/or requirements of Underwriters Laboratories Inc., Factory Mutual Approvals, The Loss Prevention Certification Board and the City of New York Department of Buildings, and they conform to the design/usage requirements of NFPA 13.

## **IMPORTANT NOTES**

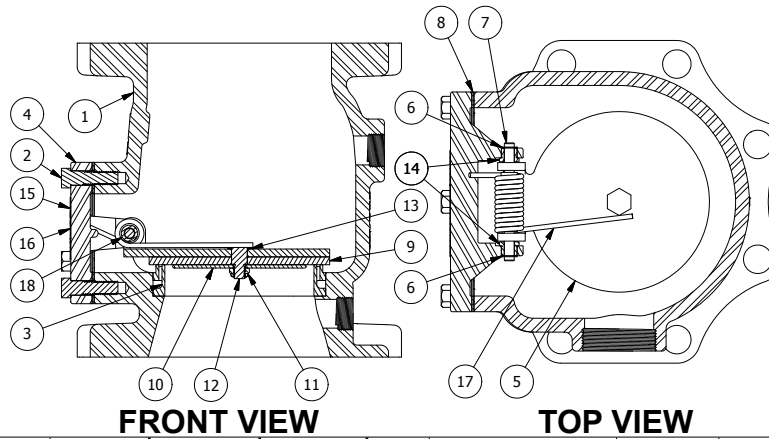
1. Any alarm check valve should be carefully tested, examined, and cleaned periodically in accordance with NFPA 25.
2. It is most important to ensure a clean water supply free of debris and solid particles such as sand, gravel, or mud.
3. If, during the annual inspection of alarm check valves, sediment or free particles of matter are noted, a further examination of internal valve parts becomes necessary.
4. All deposits should be removed from all operating parts and ports. Vent holes through seat ring, Items 3 and 2 (Page 4), should be thoroughly cleaned and flushed with clean water.
5. Where difficulty in performance is experienced, the manufacturer or his authorized representative shall be contacted if any field adjustment is to be made.

# GLOBE ALARM CHECK VALVE INSTALLATION AND MAINTENANCE GUIDE

VERTICAL / VARIABLE												
MODEL	H-1				H-2				H-3			
SIZE	3"	4"	6"	8"	3"	4"	6"	8"	3"	4"	6"	8"
Overall Length	9"	9"	10"	14"	10"	10"	12"	15"	9 1/4"	9 1/2"	11"	15"
Center of Valve to Back	10"	11"	12"	13"	10"	11"	12 1/2"	12"	10"	11"	12"	13"
Center of Valve to Right	13 1/2"	16 1/2"	16 1/2"	16 1/2"	13 1/2"	16 1/2"	17"	17"	13 1/2"	16 1/2"	16 1/2"	16 1/2"
Center of Valve to Left	8"	8"	8"	8"	8"	8"	8 1/4"	9"	8"	8"	8"	8"
Center of Valve to Center of Drain	9 1/4"	8"	8 3/4"	8 3/4"	9 1/4"	8"	9 1/4"	9"	9 1/4"	8"	8 3/4"	8 3/4"
Weight of Valve Complete with all Trimings	34 lbs. 81 lbs.	42 lbs. 89 lbs.	69 lbs. 141 lbs.	147 lbs. 198 lbs.	20 lbs. 57 lbs.	22 lbs. 69 lbs.	46 lbs. 95 lbs.	106 lbs. 157 lbs.	28 lbs. 75 lbs.	37 lbs. 84 lbs.	59 lbs. 100 lbs.	130 lbs. 180 lbs.
VERTICAL / CONSTANT												
MODEL	H-1				H-2				H-3			
SIZE	3"	4"	6"	8"	3"	4"	6"	8"	3"	4"	6"	8"
Overall Length	9"	9"	10"	14"	10"	10"	12"	15"	9 1/4"	9 1/2"	11"	15"
Center of Valve to Back	10"	8 3/4"	9 3/4"	12 1/4"	10"	8 3/4"	10"	12"	10"	8 3/4"	9 3/4"	12 1/4"
Center of Valve to Right	13 1/2"	15 1/2"	16 1/4"	17"	13 1/2"	15 1/2"	17"	17 3/4"	13 1/2"	15 1/2"	16 1/4"	17"
Center of Valve to Left	8"	8"	8"	7 1/2"	8"	8"	8 1/2"	8 3/4"	8"	8"	8"	7 1/2"
Center of Valve to Center of Drain	9 1/4"	8"	8 3/4"	9 1/2"	9 1/4"	8"	9 1/4"	9"	9 1/4"	8"	8 3/4"	9 1/2"
Weight of Valve Complete with all Trimings	34 lbs. 56 lbs.	42 lbs. 64 lbs.	69 lbs. 89 lbs.	147 lbs. 174 lbs.	20 lbs. 57 lbs.	22 lbs. 44 lbs.	46 lbs. 71 lbs.	106 lbs. 132 lbs.	28 lbs. 50 lbs.	37 lbs. 59 lbs.	59 lbs. 75 lbs.	130 lbs. 156 lbs.
HORIZONTAL / VARIABLE												
MODEL	H-1				H-2				H-3			
SIZE	3"	4"	6"	8"	3"	4"	6"	8"	3"	4"	6"	8"
Overall Length	9"	9"	10"	N/A	10"	10"	12"	N/A	9 1/4"	9 1/2"	11"	N/A
Center of Valve to Back	7 1/2"	10 1/4"	20 1/2"	N/A	7 1/2"	10 1/4"	10 1/2"	N/A	7 1/2"	10 1/4"	20 1/2"	N/A
Center of Valve to Right	17 1/2"	17"	18 1/2"	N/A	17 1/2"	17"	20 1/2"	N/A	17 1/2"	17"	18 1/2"	N/A
Center of Valve to Left	7 1/4"	8 1/2"	12"	N/A	7 1/4"	8 1/2"	10"	N/A	7 1/4"	8 1/2"	12"	N/A
Center of Valve to Center of Drain	9 1/2"	13 1/2"	14"	N/A	9 1/2"	13 1/2"	13 3/4"	N/A	9 1/2"	13 1/2"	14"	N/A
Weight of Valve Complete with all Trimings	34 lbs. 89 lbs.	42 lbs. 97 lbs.	69 lbs. 122 lbs.	N/A	20 lbs. 70 lbs.	22 lbs. 82 lbs.	46 lbs. 100 lbs.	N/A	28 lbs. 83 lbs.	37 lbs. 92 lbs.	59 lbs. 113 lbs.	N/A
HORIZONTAL / CONSTANT												
MODEL	H-1				H-2				H-3			
SIZE	3"	4"	6"	8"	3"	4"	6"	8"	3"	4"	6"	8"
Overall Length	9"	9"	10"	N/A	10"	10"	12"	N/A	9 1/4"	9 1/2"	11"	N/A
Center of Valve to Back	7 1/2"	10"	19 1/2"	N/A	7 1/2"	10"	11"	N/A	7 1/2"	10"	19 1/2"	N/A
Center of Valve to Right	17 1/2"	16 1/2"	15 1/2"	N/A	17 1/2"	16 1/2"	19 1/2"	N/A	17 1/2"	16 1/2"	15 1/2"	N/A
Center of Valve to Left	7 1/4"	8 1/2"	8 3/4"	N/A	7 1/4"	8 1/2"	10"	N/A	7 1/4"	8 1/2"	8 3/4"	N/A
Center of Valve to Center of Drain	12 1/4"	13 1/2"	14"	N/A	12 1/4"	13 1/2"	12 3/4"	N/A	12 1/4"	13 1/2"	14"	N/A
Weight of Valve Complete with all Trimings	34 lbs. 60 lbs.	42 lbs. 68 lbs.	69 lbs. 94 lbs.	N/A	20 lbs. 70 lbs.	22 lbs. 53 lbs.	46 lbs. 74 lbs.	N/A	28 lbs. 54 lbs.	37 lbs. 63 lbs.	59 lbs. 85 lbs.	N/A

# GLOBE ALARM CHECK VALVE INSTALLATION AND MAINTENANCE GUIDE

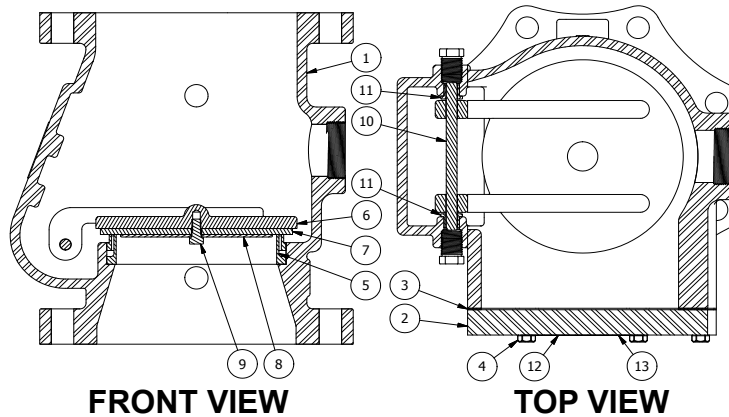
## 3", 4" & 6" Alarm Check Valve Assembly



ITEM	DESCRIPTION	MATERIAL	3" [80mm] P/N	4" [100mm] P/N	6" / 150mm P/N	ITEM	DESCRIPTION	MATERIAL	3" [80mm] P/N	4" [100mm] P/N	6" / 150mm P/N
1	"H-1" Body	Cast Iron	323803	323502	323562	9	Clapper Facing Disc	EPDM	323815	323511	323571
	"H-2" Body	Cast Iron*	323827	323552	323666/ 323666-D	10	Disc Retainer	Stainless	323816	323512	323572
	"H-3" Body	Cast Iron	323807	323542	323592	11	Lock Nut	Stainless	323514	323514	323514
2	Cover Bolt	Steel	323408	323509	323569	12	Disc Retainer Bolt	Stainless	323817	323513	323573
3	Seat Ring	Bronze	323809	323504	323564	13	Sealing Washer	Hard Fiber	323515	323515	323515
4	Cover	Cast Iron*	323805	323507	323567	14	Hinge Pin Bushings (2)	Bronze	323819	323518	323518
5	Clapper	Stainless	323814	323510	323507	15	Name Plate	Aluminum	323480	323480	323480
6	Retaining Ring	Stainless	323527	323517	323517	16	Drive Screws (2)	Stainless	323520	323520	323520
7	Hinge Pin	Stainless	323818	323516	323516	17	Torsion Spring	Stainless	323528	323528	323565
8	Cover Gasket	Vellumoid	323810	323508	323568	18	Spring Bushing	Brass	---	---	323579

\*DUCTILE IRON FOR 300psi (20bars) RATED VALVES

## 8" Alarm Check Valve Assembly



ITEM	DESCRIPTION	MATERIAL	P/N	ITEM	DESCRIPTION	MATERIAL	P/N
1	"H-1" Body	Cast Iron	323832	7	Clapper Disc	EPDM	323842
	"H-2" Body	Cast Iron*	323858	8	Disc Retainer	Stainless	323843
	"H-3" Body	Cast Iron	323851	9	Disc Retainer Bolt	Stainless	323838
2	Cover	Cast Iron*	323835	10	Hinge Pin	Stainless	323845
3	Cover Gasket	Rubber	323833	11	Hinge Pin Bushings (2)	Bronze	323846
4	Cover Bolts (6)	Steel	323839	12	175psi Name Plate	Aluminum	323847
5	Seat Ring	Bronze	323837		300psi Name Plate	Aluminum	323787
6	Clapper	Bronze	323841	13	Drive Screws (2)	Stainless	323420

\*DUCTILE IRON FOR 300psi (20bars) RATED VALVES

# GLOBE ALARM CHECK VALVE INSTALLATION AND MAINTENANCE GUIDE

## Testing and Maintenance

### Reference

NFPA 25, Standard for the Inspection, Testing and Maintenance of Water-Based Fire Protection Systems.

### TESTING

Before proceeding with any tests involving water flow, certain precautions need to be taken.

1. Check the location where the test connection discharges to make sure that all is clear and that there is no possibility of the water flow causing damage or injury.

2. Check the end of the test connection to make sure that it is unobstructed. To obtain a satisfactory test, there must be an unrestricted flow of water when the test valve is wide open.

3. Check for alarm connections to a central station or fire department. If such connections are found, give proper notice to the signal receiving station before proceeding with the test.

**Note:** A main drain test will also operate local fire alarms - unless they are temporarily shut off.

### Testing Alarm Valve and Waterflow Alarm Devices

NFPA 25 recommends that the alarm valve and its waterflow alarm devices be tested at least quarterly.

The primary way to test this equipment is by opening the Inspectors Test Connection. This connection, generally located at the highest and most remote point on the system in relation to the alarm valve, consists of a test orifice and controlling globe valve. Opening of the globe valve (Inspectors Test Valve), and the subsequent discharge of water through the test orifice, simulates the operation of a sprinkler. Therefore, alarm devices should sound and/or operate when the Inspectors Test Valve is opened.

An alternate means of testing waterflow alarm devices is to open the Alarm Test Valve provided as part of the alarm valve trim. It must be noted, however, that opening of this valve only tests the alarms; it does not test the operation of the alarm valve since the supply for the alarm test line is taken from a point below the alarm valve clapper (see respective trim drawings). This means of testing, therefore, should only be used when weather conditions or other circumstances prohibit using the Inspectors Test Connection.

**Note:** If alarms connect to a central station or fire department, notify the signal receiving station when all tests have been completed.

## Flow Test at Main Drain Valve (Main Drain Test)

NFPA 25 recommends that a water flow test be made quarterly from the main drain valve at the system riser. The purpose of this test is to show whether or not the normal water supply is available to the system. By comparing static and residual pressure readings with those previously established, a main drain test can indicate the possible presence of closed valves or other obstructions in the supply piping.

The procedure for conducting a Main Drain Test is as follows:

1. With the Main Drain Valve closed, note and record the reading on the lower Pressure Gauge at the Alarm Valve.

2. Open the Main Drain Valve slowly until it is wide open. Then, check to make sure that a full steady flow of water is discharging from the main drain pipe.

**Note:** If a full steady stream is not discharging, check the main drain piping further for possible obstructions.

3. Allow the water to flow until the reading on the lower Pressure Gauge drops and stabilizes. Then, record this reading.

**Note:** The first and higher pressure reading is the static pressure. The second, lower reading is the residual pressure with a given flow discharging from the main drain pipe.

4. Close the Main Drain Valve slowly.

**Caution:** If alarms have been temporarily shut off, they must be returned to service. If alarms connect to a central station or fire department, notify the signal receiving station when the test has been completed.

5. Compare both pressure readings with previously established or normal readings.

**Note:** If the readings compare favorably, the water supply may be considered satisfactory. If, however, the pressure readings vary to any great extent, the condition should be investigated to determine the cause. Some possible causes are:

- Partially or totally closed system control valves.
- Clogged or frozen water mains.
- Serious leakage at valves or mains.

# GLOBE ALARM CHECK VALVE INSTALLATION AND MAINTENANCE GUIDE

## MAINTENANCE

The Globe Alarm Check Valve and its related equipment should be examined periodically to ensure proper operation and trouble-free service. Several areas to be routinely inspected are:

**Clapper Facing.** The rubber clapper facing should be checked for wear or damage, and to determine that it is free of dirt and other foreign substances. If found to be worn or damaged (e.g., foreign matter imbedded in the surface), the facing should be replaced. If it is dirty, it should be cleaned, but compounds which could damage the rubber facing must never be used.

**Seat Ring.** The seat ring should be checked for nicks and for stones, dirt or other foreign matter lodged in the grooves or holes. It should be cleaned thoroughly. If the seat ring is found to be severely damaged, the complete alarm valve assembly should be replaced or returned to Globe for possible reconditioning.

**By-Pass Check Valve.** The  $\frac{3}{4}$ " check valve in the external by-pass should be checked for clapper and seat condition.

**Retard Chamber.** The outlet plug and drain plug assemblies should be checked for obstructions. The screens should be cleaned thoroughly.

**Alarm Line Strainer.** The  $\frac{3}{4}$ " strainer in the alarm line of the constant pressure trim setup should be checked and cleaned thoroughly.

**Alarm Test Valve, Main Drain Valve & Inspectors Test Valve.** All controlling valves which are normally closed when the alarm valve is in the set position should be checked to be sure that they are fully closed and not leaking.

**Alarm Valve & Trim.** The overall setup should be checked for visible leaks and possible physical damage to the valve and connections (e.g., broken gauges).

### Resetting of System

The Globe Alarm Check Valve is self-setting when testing procedures are followed. When sprinklers operate, however, there are certain procedures which must be followed for restoring the system to service.

1. Close the System Control Valve (OS & Y, PIV or other).

**Caution:** In the event of a fire, the system control valve is to be closed only after it has been determined, positively, that the fire has been extinguished.

2. Close the Alarm Control Valve.

3. Open the Main Drain Valve.

**Note:** It is necessary to drain the system only as required to allow for sprinkler replacement.

4. Replace the sprinklers which have operated.

5. Close the Main Drain Valve

6. Open the Inspectors Test Valve.

**Note:** This valve is opened to permit air to be vented from the system as it is being filled with water.

7. Slowly open the System Control Valve.

**Caution:** Open the valve only partially at the start of water flow into the system. Do not open it fully at this point. To do so may cause a water hammer to occur which could either damage the piping or trap large volumes of air within the system.

8. Continue filling the system until water discharges in a continuous stream from the Inspectors Test Connection.

9. Close the Inspectors Test Valve.

10. Turn the System Control Valve to its full open position, at the same time observing the Pressure Gauges.

**Note:** The system is filled when both gauges are steady and have the same pressure reading.

11. Conduct a Main Drain Test to make sure the water supply is satisfactory (see Flow Test at Main Drain Valve).

12. Open the Alarm Control Valve.

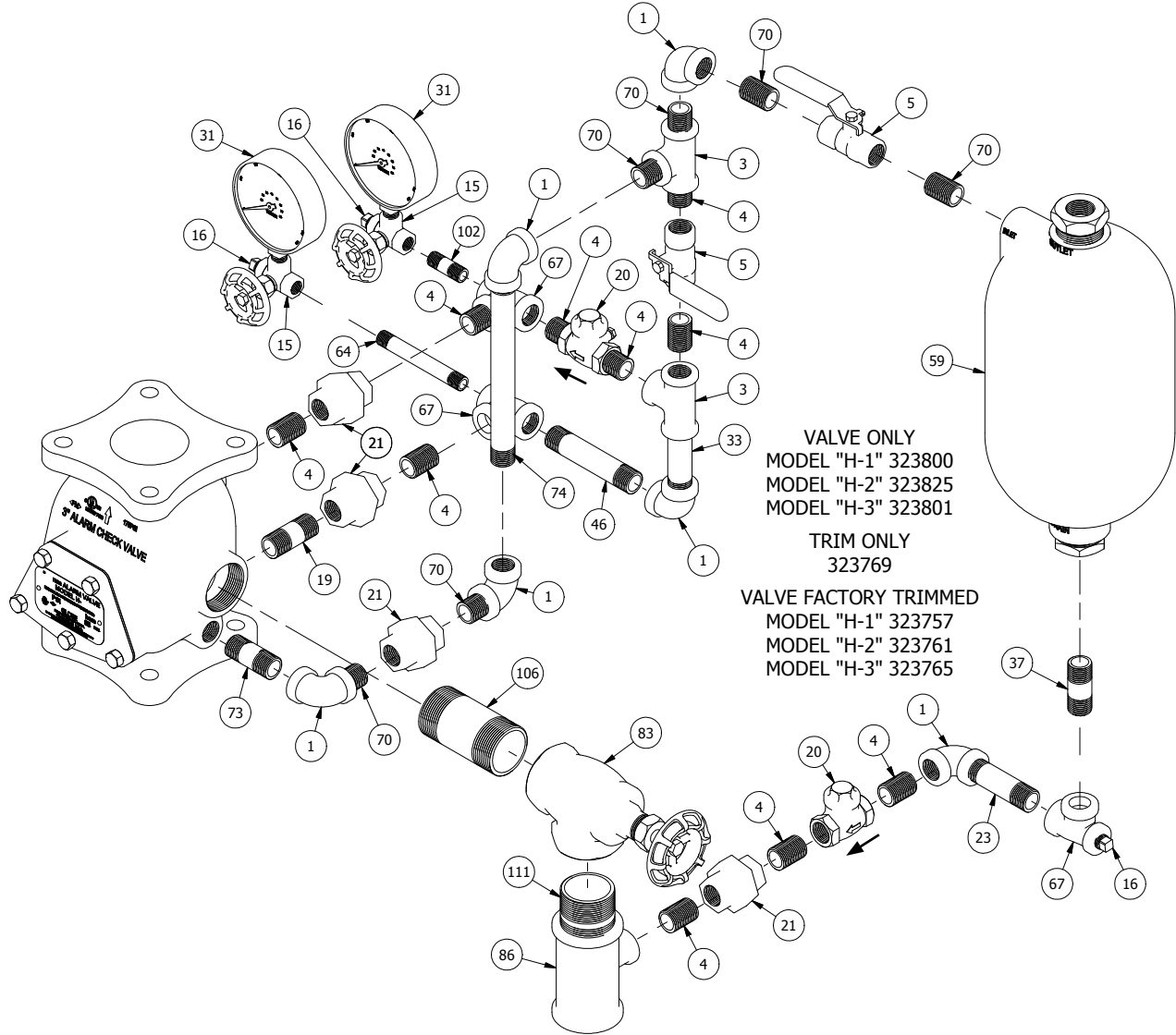
13. Conduct a test of the alarm devices (see Testing Alarm and Waterflow Alarm Devices).

14. Seal, lock, or otherwise secure the System Control Valve and Alarm Control Valve in an open position (per NFPA 25). The system is now ready for service.

15. If alarms connect to a central station or fire department, notify the signal receiving station that the system has been returned to service.

# GLOBE ALARM CHECK VALVE INSTALLATION AND MAINTENANCE GUIDE

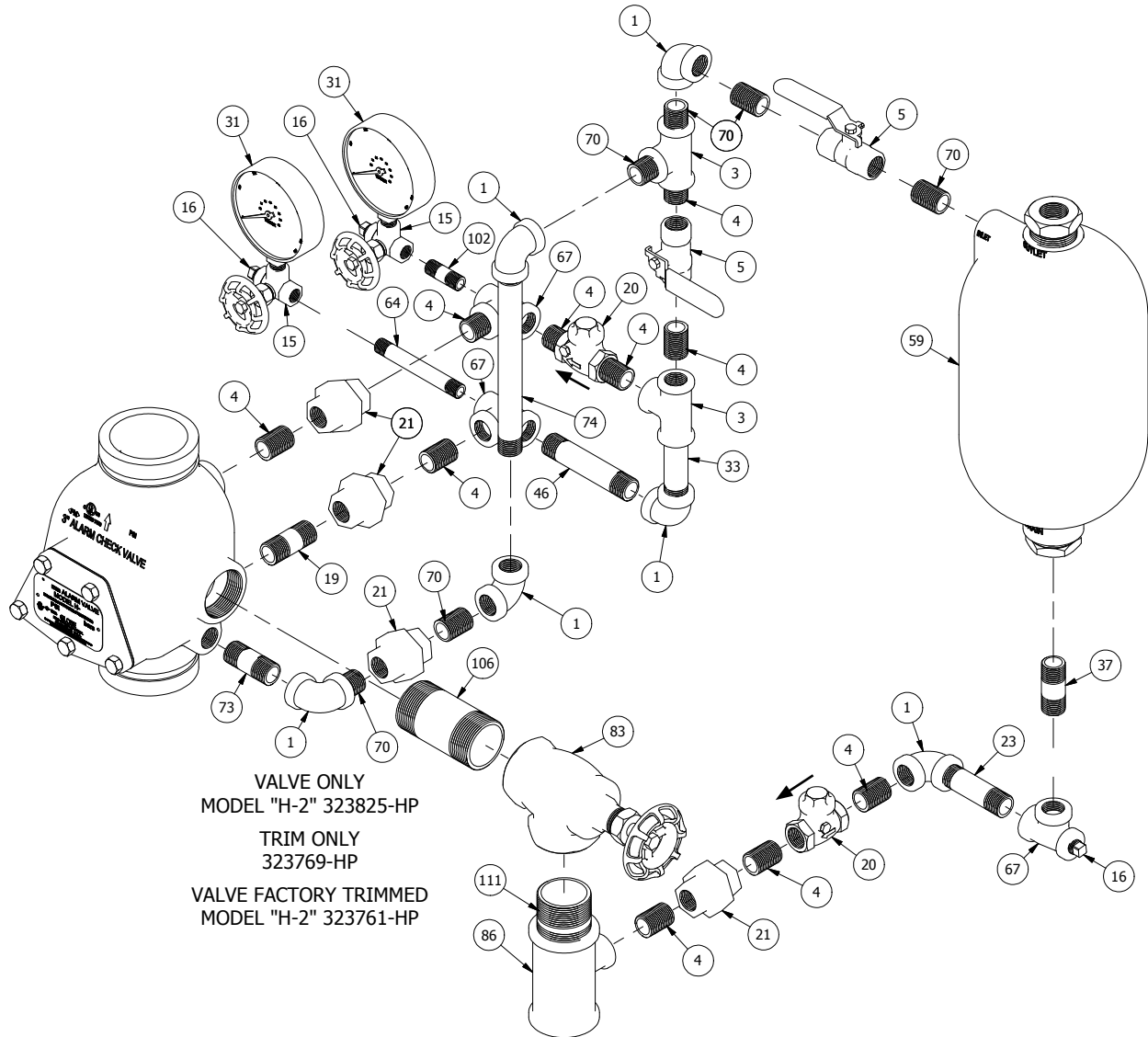
**175psi (12bars) RATED**  
**3" MODEL "H" SERIES VERTICAL POSITION / VARIABLE PRESSURE TRIM**



Det. No.	Description	Part No.	Req'd.	Det. No.	Description	Part No.	Req'd.	Det. No.	Description	Part No.	Req'd.
1	1/2" Elbow	311203	6	23	1/2" x 3" Nipple	310304	1	70	1/2" Close Galv. Nipple	310300-G	6
3	1/2" Tee	311303	2	31	3 1/2" Water Gauge (0-300psi)	300119	2	73	1/2" x 2" Galv. Nipple	310302-G	1
4	1/2" Close Nipple	310300	10	33	1/2" x 3 1/2" Nipple	310305	1	74	1/2" x 7 1/2" Galv. Nipple	310313-G	1
5	1/2" Ball Valve	311692	2	37	1/2" x 1 1/2" Nipple	310301	1	83	1 1/2" Angle Valve	311616	1
15	1/4" 3-Way Valve	311683	2	46	1/2" x 4" Nipple	310306	1	86	1 1/2" x 1 1/2" x 1/2" Tee	311391	1
16	1/4" Plug	311001	3	59	Retard Chamber	323350	1	102	1/4" x 1 1/2" Nipple	310101	1
19	1/2" x 2" Nipple	310302	1	64	1/4" x 4" Nipple	310106	1	106	1 1/2" x 3 1/2" Nipple	310704	1
20	1/2" Swing Check Valve	311639	2	67	1/2" x 1/4" x 1/2" Tee	311305	3	111	1 1/2" x 2 1/2" Nipple	310702	1
21	1/2" Union	311403	4								

# GLOBE ALARM CHECK VALVE INSTALLATION AND MAINTENANCE GUIDE

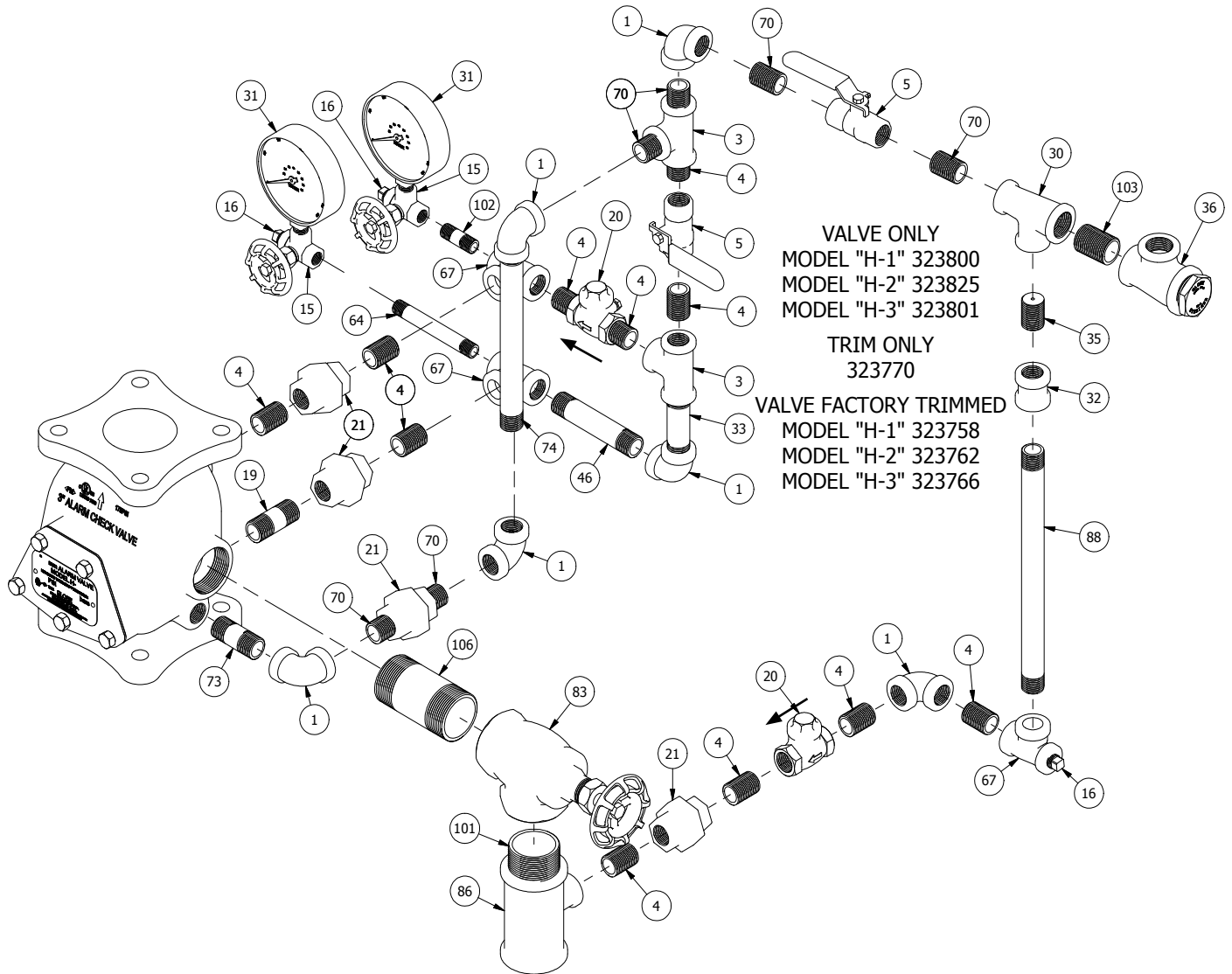
300psi (20bars) RATED  
3" MODEL "H-2" VERTICAL POSITION / VARIABLE PRESSURE TRIM



Det. No.	Description	Part No.	Req'd.	Det. No.	Description	Part No.	Req'd.	Det. No.	Description	Part No.	Req'd.
1	1/2" Elbow	311203	6	23	1/2" x 3" Nipple	310304	1	70	1/2" Close Galv. Nipple	310300-G	6
3	1/2" Tee	311303	2	31	3 1/2" Water Gauge (0-300psi)	300119	2	73	1/2" x 2" Galv. Nipple	310302-G	1
4	1/2" Close Nipple	310300	10	33	1/2" x 3 1/2" Nipple	310305	1	74	1/2" x 7 1/2" Galv. Nipple	310313-G	1
5	1/2" Ball Valve	311692	2	37	1/2" x 1 1/2" Nipple	310301	1	83	1 1/2" Angle Valve	311616	1
15	1/4" 3-Way Valve	311683	2	46	1/2" x 4" Nipple	310306	1	86	1 1/2" x 1 1/2" x 1/2" Tee	311391	1
16	1/4" Plug	311001	3	59	Retard Chamber	323350	1	102	1/4" x 1 1/2" Nipple	310101	1
19	1/2" x 2" Nipple	310302	1	64	1/4" x 4" Nipple	310106	1	106	1 1/2" x 3 1/2" Nipple	310704	1
20	1/2" Swing Check Valve	311639	2	67	1/2" x 1/4" x 1/2" Tee	311305	3	111	1 1/2" x 2 1/2" Nipple	310702	1
21	1/2" Union	311403	4								

# GLOBE ALARM CHECK VALVE INSTALLATION AND MAINTENANCE GUIDE

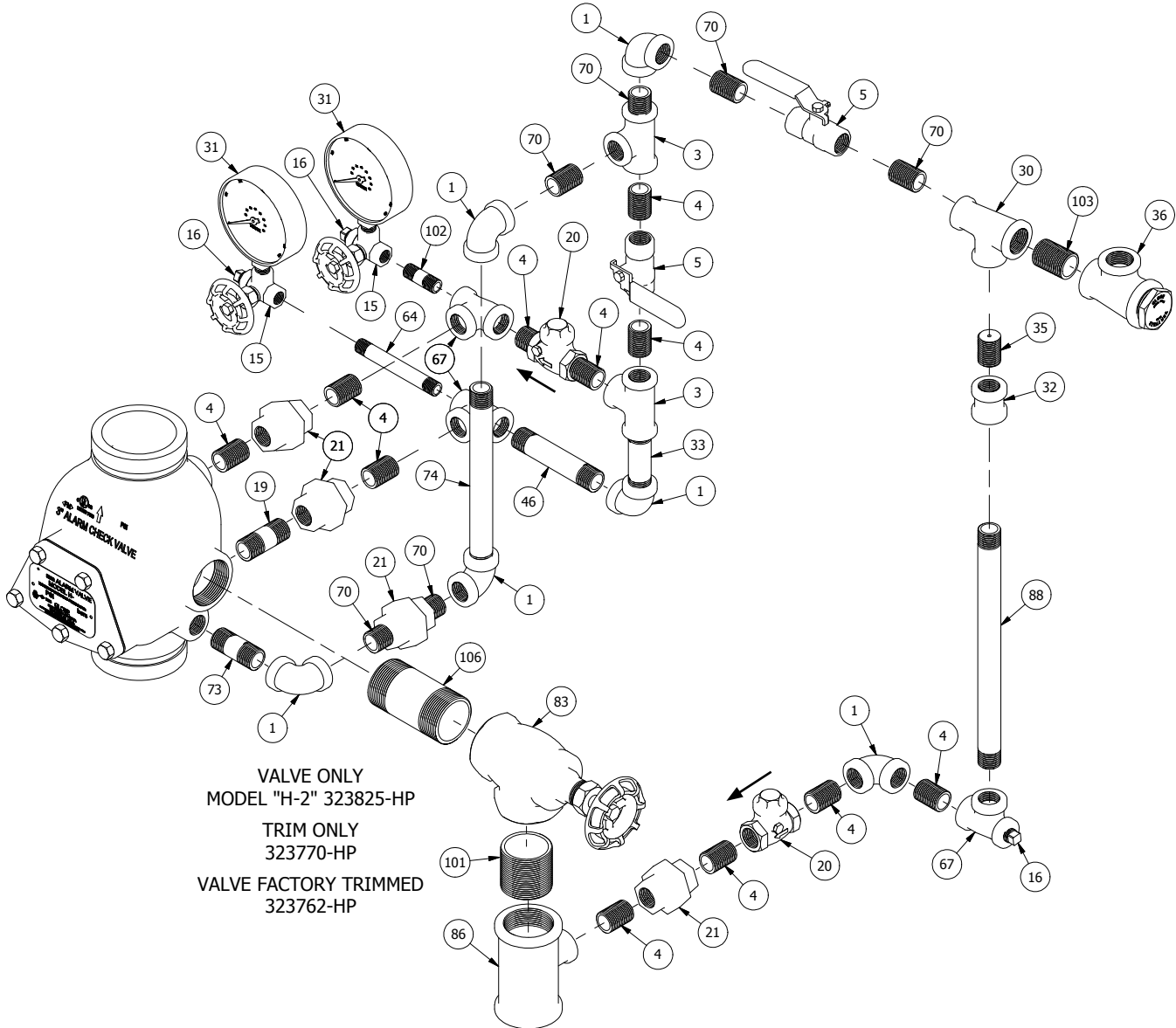
175psi (12bars) RATED  
3" MODEL "H" SERIES VERTICAL POSITION / CONSTANT PRESSURE TRIM



Det. No.	Description	Part No.	Req'd.	Det. No.	Description	Part No.	Req'd.	Det. No.	Description	Part No.	Req'd.
1	1/2" Elbow	311203	6	31	3 1/2" Water Gauge (0-300psi)	300119	2	73	1/2" x 2" Galv. Nipple	310302-G	1
3	1/2" Tee	311303	2	32	1/2" Coupling	311423	1	74	1/2" x 7 1/2" Galv. Nipple	310313-G	1
4	1/2" Close Nipple	310300	11	33	1/2" x 3 1/2" Nipple	310305	1	83	1 1/2" Angle Valve	311616	1
5	1/2" Ball Valve	311692	2	35	Alarm Line Bleeder	320506	1	86	1 1/2" x 1 1/2" x 1/2" Tee	311391	1
15	1/4" 3-Way Valve	311683	2	36	3/4" Strainer	325535	1	88	1/2" x 10" Nipple	310320	1
16	1/4" Plug	311001	3	46	1/2" x 4" Nipple	310306	1	101	1 1/2" Close Nipple	310700	1
19	1/2" x 2" Nipple	310302	1	64	1/4" x 4" Nipple	310106	1	102	1/4" x 1 1/2" Nipple	310101	1
20	1/2" Swing Check Valve	311639	2	67	1/2" x 1/4" x 1/2" Tee	311305	3	103	3/4" Close Galv. Nipple	310400-G	1
21	1/2" Union	311403	4	70	1/2" Close Galv. Nipple	310300-G	6	106	1 1/2" x 3 1/2" Nipple	310704	1
30	3/4" x 1/2" x 1/2" Tee	311318	1								

# GLOBE ALARM CHECK VALVE INSTALLATION AND MAINTENANCE GUIDE

**300psi (20bars) RATED**  
**3" MODEL "H-2" VERTICAL POSITION / CONSTANT PRESSURE TRIM**

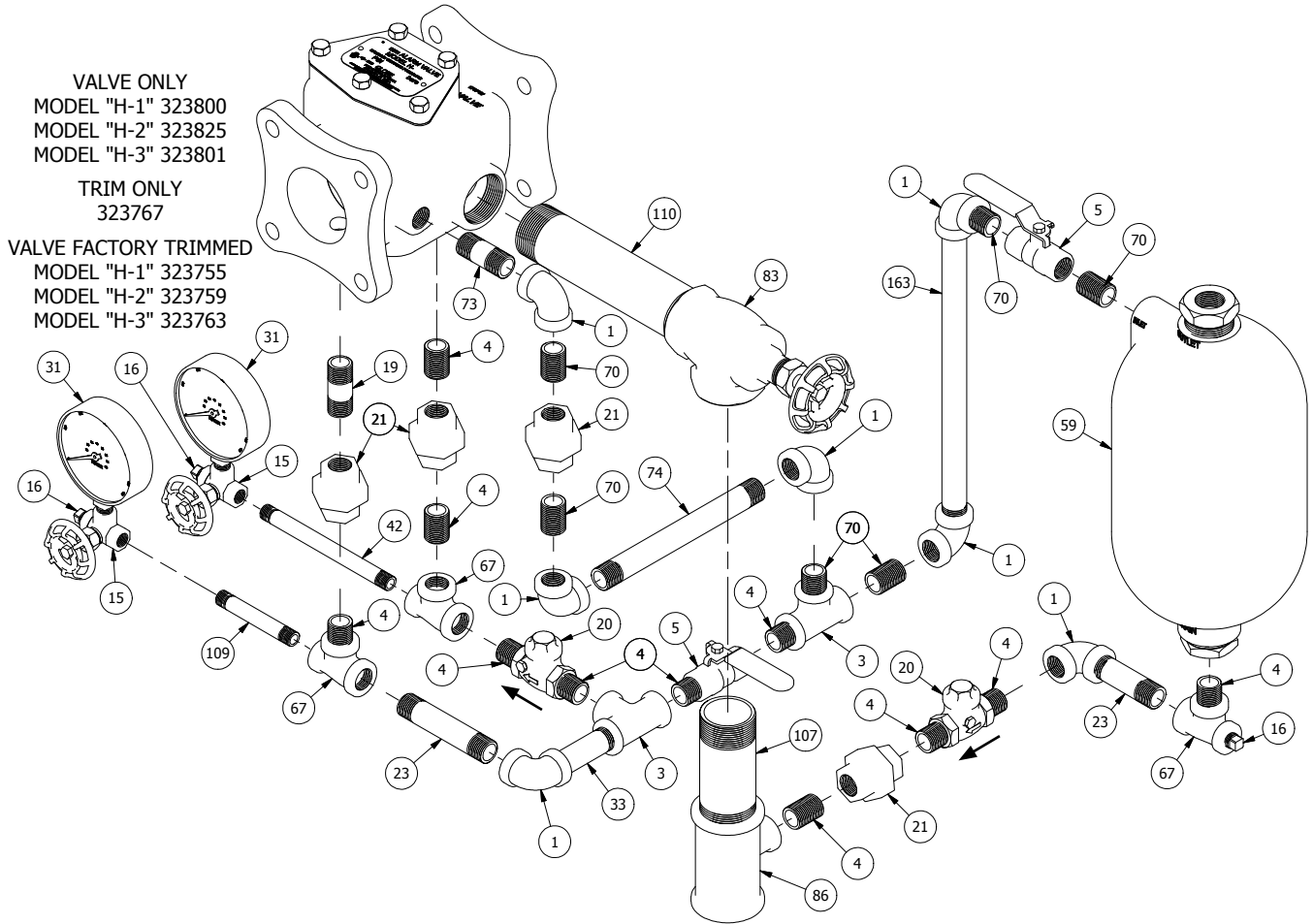


Det. No.	Description	Part No.	Req'd.	Det. No.	Description	Part No.	Req'd.	Det. No.	Description	Part No.	Req'd.
1	1/2" Elbow	311203	6	31	3 1/2" Water Gauge (0-300psi)	300119	2	73	1/2" x 2" Galv. Nipple	310302-G	1
3	1/2" Tee	311303	2	32	1/2" Coupling	311423	1	74	1/2" x 7 1/2" Galv. Nipple	310313-G	1
4	1/2" Close Nipple	310300	11	33	1/2" x 3 1/2" Nipple	310305	1	83	1 1/2" Angle Valve	311616	1
5	1/2" Ball Valve	311692	2	35	Alarm Line Bleeder	320506	1	86	1 1/2" x 1 1/2" x 1/2" Tee	311391	1
15	1/4" 3-Way Valve	311683	2	36	3/4" Strainer	325535	1	88	1/2" x 10" Nipple	310320	1
16	1/4" Plug	311001	3	46	1/2" x 4" Nipple	310306	1	101	1 1/2" Close Nipple	310700	1
19	1/2" x 2" Nipple	310302	1	64	1/4" x 4" Nipple	310106	1	102	1/4" x 1 1/2" Nipple	310101	1
20	1/2" Swing Check Valve	311639	2	67	1/2" x 1/4" x 1/2" Tee	311305	3	103	3/4" Close Galv. Nipple	310400-G	1
21	1/2" Union	311403	4	70	1/2" Close Galv. Nipple	310300-G	6	106	1 1/2" x 3 1/2" Nipple	310704	1
30	3/4" x 1/2" x 1/2" Tee	311318	1								

# GLOBE ALARM CHECK VALVE INSTALLATION AND MAINTENANCE GUIDE

175psi (12bars) RATED

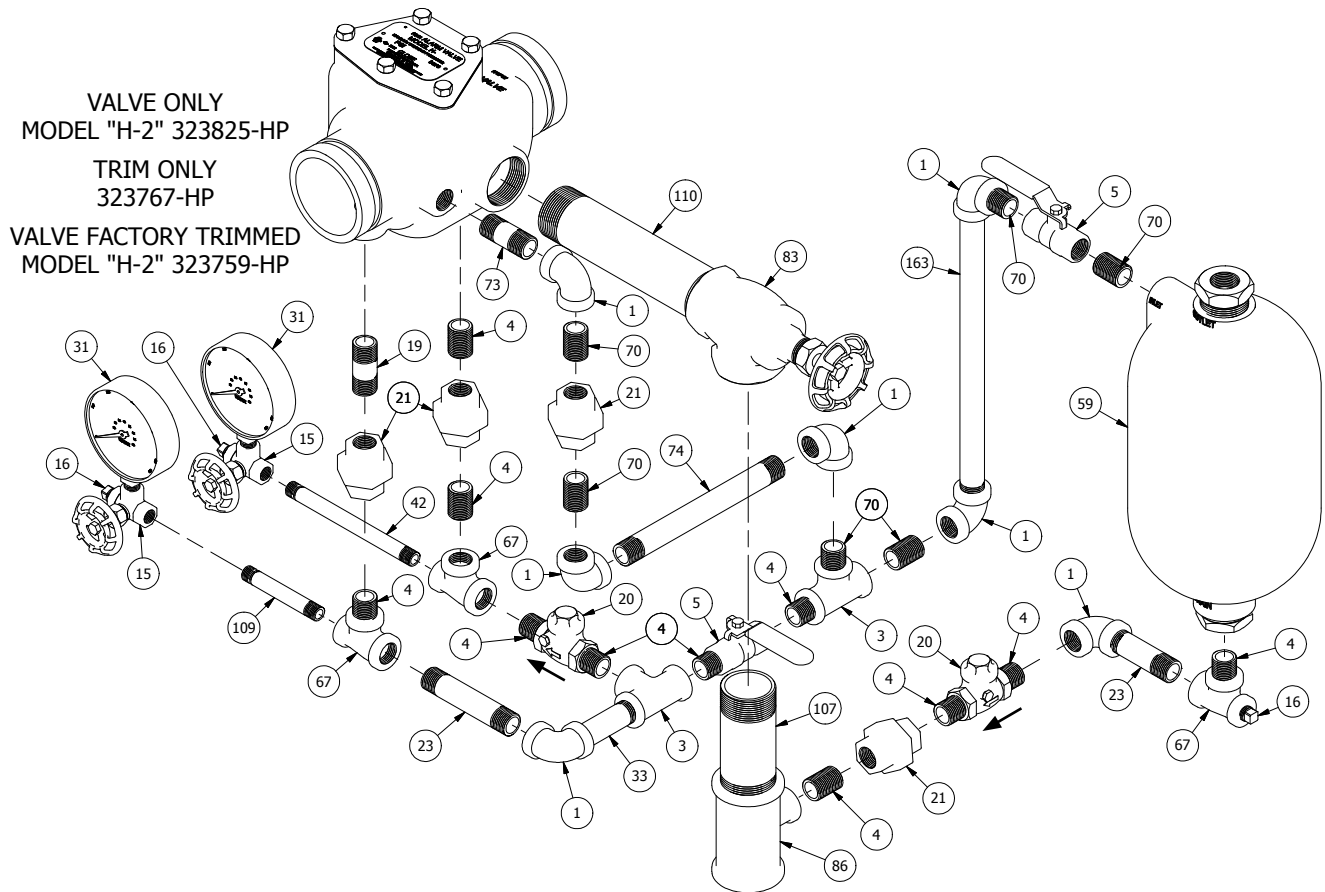
3" MODEL "H" SERIES HORIZONTAL POSITION / VARIABLE PRESSURE TRIM



Det. No.	Description	Part No.	Req'd.	Det. No.	Description	Part No.	Req'd.	Det. No.	Description	Part No.	Req'd.
1	1/2" Elbow	311203	7	21	1/2" Union	311403	4	73	1/2" x 2" Galv. Nipple	310302-G	1
3	1/2" Tee	311303	2	23	1/2" x 3" Nipple	310304	2	74	1/2" x 7 1/2" Galv. Nipple	310313-G	1
4	1/2" Close Nipple	310300	11	31	3 1/2" Water Gauge (0-300psi)	300119	2	83	1 1/2" Angle Valve	311616	1
5	1/2" Ball Valve	311692	2	33	1/2" x 3 1/2" Nipple	310305	1	86	1 1/2" x 1 1/2" x 1/2" Tee	311391	1
15	1/4" 3-Way Valve	311683	2	42	1/4" x 6" Nipple	310110	1	107	1 1/2" x 4 1/2" Nipple	310706	1
16	1/4" Plug	311001	3	59	Retard Chamber	323350	1	109	1/4" x 3 1/2" Nipple	310105	1
19	1/2" x 2" Nipple	310302	1	67	1/2" x 1/4" x 1/2" Tee	311305	3	110	1 1/2" x 8" Nipple	310715	1
20	1/2" Swing Check Valve	311639	2	70	1/2" Close Galv. Nipple	310300-G	6	163	1/2" x 12 1/2" Galv. Nipple	310338-G	1

# GLOBE ALARM CHECK VALVE INSTALLATION AND MAINTENANCE GUIDE

300psi (20bars) RATED  
3" MODEL "H-2" HORIZONTAL POSITION / VARIABLE PRESSURE TRIM



Det. No.	Description	Part No.	Req'd.	Det. No.	Description	Part No.	Req'd.	Det. No.	Description	Part No.	Req'd.
1	1/2" Elbow	311203	7	21	1/2" Union	311403	4	73	1/2" x 2" Galv. Nipple	310302-G	1
3	1/2" Tee	311303	2	23	1/2" x 3" Nipple	310304	2	74	1/2" x 7 1/2" Galv. Nipple	310313-G	1
4	1/2" Close Nipple	310300	11	31	3 1/2" Water Gauge (0-300psi)	300119	2	83	1 1/2" Angle Valve	311616	1
5	1/2" Ball Valve	311692	2	33	1/2" x 3 1/2" Nipple	310305	1	86	1 1/2" x 1 1/2" x 1/2" Tee	311391	1
15	1/4" 3-Way Valve	311683	2	42	1/4" x 6" Nipple	310110	1	107	1 1/2" x 4 1/2" Nipple	310706	1
16	1/4" Plug	311001	3	59	Retard Chamber	323350	1	109	1/4" x 3 1/2" Nipple	310105	1
19	1/2" x 2" Nipple	310302	1	67	1/2" x 1/4" x 1/2" Tee	311305	3	110	1 1/2" x 8" Nipple	310715	1
20	1/2" Swing Check Valve	311639	2	70	1/2" Close Galv. Nipple	310300-G	6	163	1/2" x 12 1/2" Galv. Nipple	310338-G	1

# GLOBE ALARM CHECK VALVE INSTALLATION AND MAINTENANCE GUIDE

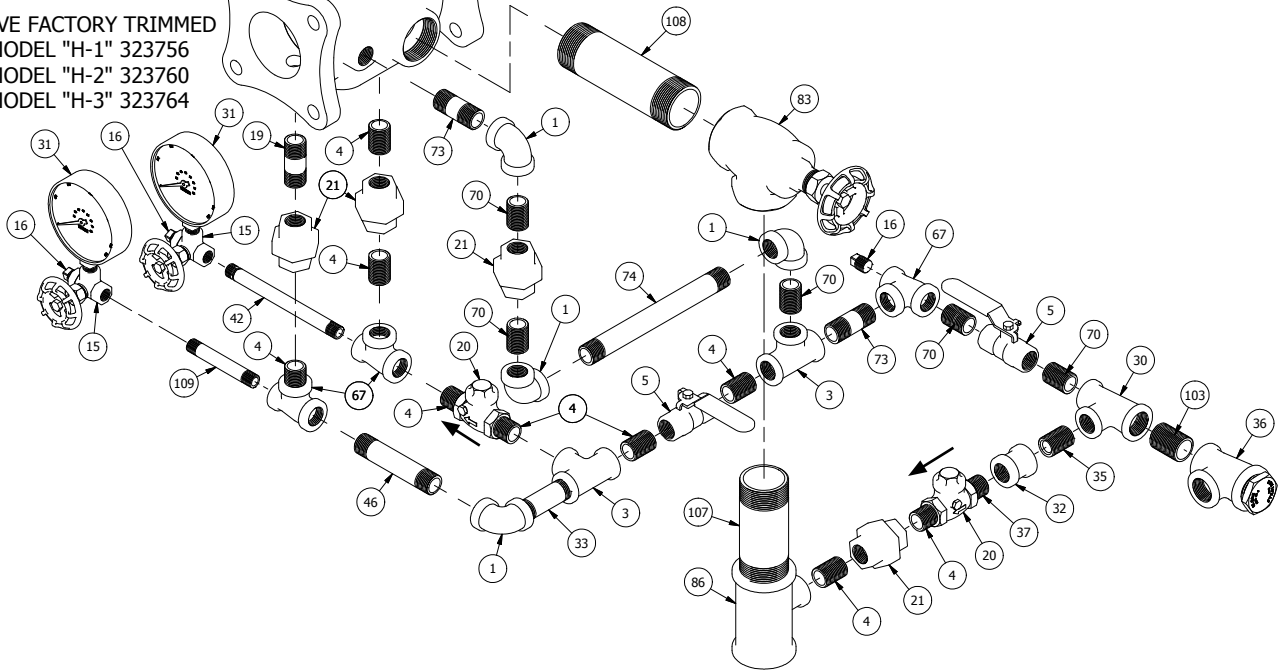
**175psi (12bars) RATED**

**3" MODEL "H" SERIES HORIZONTAL POSITION / CONSTANT PRESSURE TRIM**

VALVE ONLY  
MODEL "H-1" 323800  
MODEL "H-2" 323825  
MODEL "H-3" 323801

TRIM ONLY  
323768

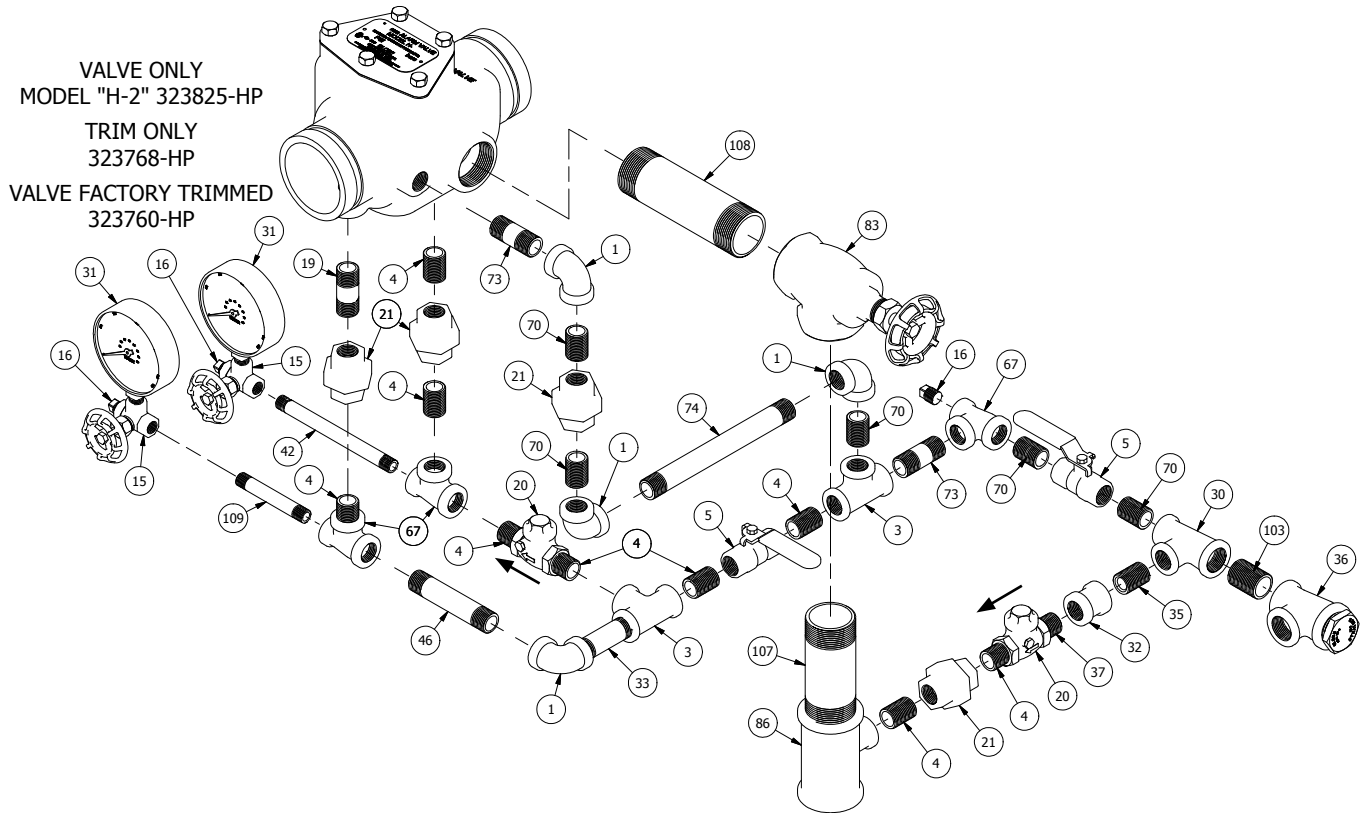
VALVE FACTORY TRIMMED  
MODEL "H-1" 323756  
MODEL "H-2" 323760  
MODEL "H-3" 323764



Det. No.	Description	Part No.	Req'd.	Det. No.	Description	Part No.	Req'd.	Det. No.	Description	Part No.	Req'd.
1	1/2" Elbow	311203	4	31	3 1/2" Water Gauge (0-300psi)	300119	2	70	1/2" Close Galv. Nipple	310300-G	5
3	1/2" Tee	311303	2	32	1/2" Coupling	311423	1	73	1/2" x 2" Galv. Nipple	310302-G	2
4	1/2" Close Nipple	310300	9	33	1/2" x 3 1/2" Nipple	310305	1	74	1/2" x 7 1/2" Galv. Nipple	310313-G	1
5	1/2" Ball Valve	311692	2	35	Alarm Line Bleeder	320506	1	83	1 1/2" Angle Valve	311616	1
15	1/4" 3-Way Valve	311683	2	36	3/4" Strainer	325535	1	86	1 1/2" x 1 1/2" x 1/2" Tee	311391	1
16	1/4" Plug	311001	3	37	1/2" x 1 1/2" Nipple	310301	1	103	3/4" Close Galv. Nipple	310400-G	1
19	1/2" x 2" Nipple	310302	1	42	1/4" x 6" Nipple	310110	1	107	1 1/2" x 4 1/2" Nipple	310706	1
20	1/2" Swing Check Valve	311639	2	46	1/2" x 4" Nipple	310306	1	108	1 1/2" x 6" Nipple	310709	1
21	1/2" Union	311403	4	67	1/2" x 1/4" x 1/2" Tee	311305	3	109	1/4" x 3 1/2" Nipple	310105	1

# GLOBE ALARM CHECK VALVE INSTALLATION AND MAINTENANCE GUIDE

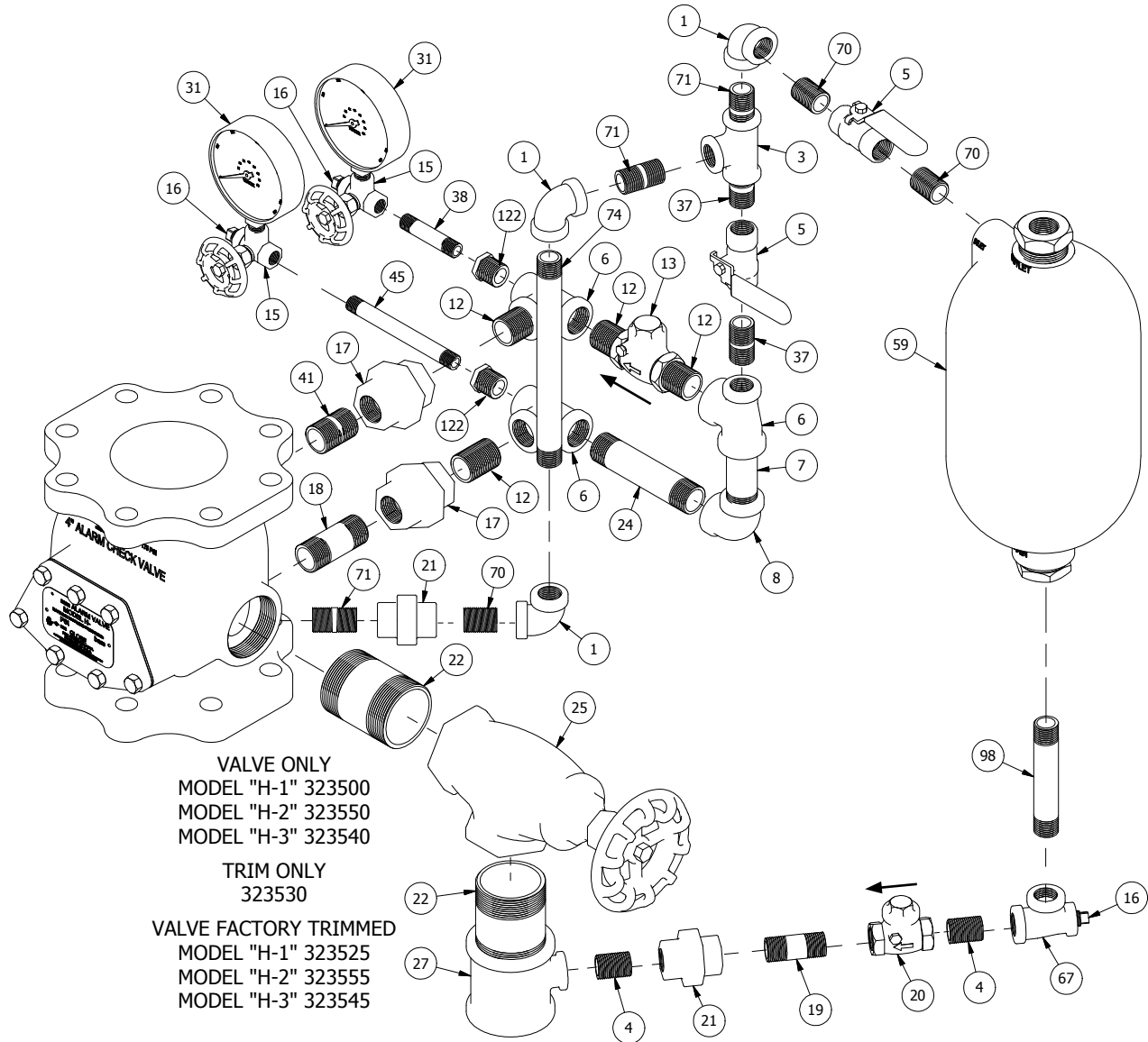
300psi (20bars) RATED  
3" MODEL "H-2" HORIZONTAL POSITION / CONSTANT PRESSURE TRIM



Det. No.	Description	Part No.	Req'd.	Det. No.	Description	Part No.	Req'd.	Det. No.	Description	Part No.	Req'd.
1	1/2" Elbow	311203	4	31	3 1/2" Water Gauge (0-300psi)	300119	2	70	1/2" Close Galv. Nipple	310300-G	5
3	1/2" Tee	311303	2	32	1/2" Coupling	311423	1	73	1/2" x 2" Galv. Nipple	310302-G	2
4	1/2" Close Nipple	310300	9	33	1/2" x 3 1/2" Nipple	310305	1	74	1/2" x 7 1/2" Galv. Nipple	310313-G	1
5	1/2" Ball Valve	311692	2	35	Alarm Line Bleeder	320506	1	83	1 1/2" Angle Valve	311616	1
15	1/4" 3-Way Valve	311683	2	36	3/4" Strainer	325535	1	86	1 1/2" x 1 1/2" x 1/2" Tee	311391	1
16	1/4" Plug	311001	3	37	1/2" x 1 1/2" Nipple	310301	1	103	3/4" Close Galv. Nipple	310400-G	1
19	1/2" x 2" Nipple	310302	1	42	1/4" x 6" Nipple	310110	1	107	1 1/2" x 4 1/2" Nipple	310706	1
20	1/2" Swing Check Valve	311639	2	46	1/2" x 4" Nipple	310306	1	108	1 1/2" x 6" Nipple	310709	1
21	1/2" Union	311403	4	67	1/2" x 1/4" x 1/2" Tee	311305	3	109	1/4" x 3 1/2" Nipple	310105	1

# GLOBE ALARM CHECK VALVE INSTALLATION AND MAINTENANCE GUIDE

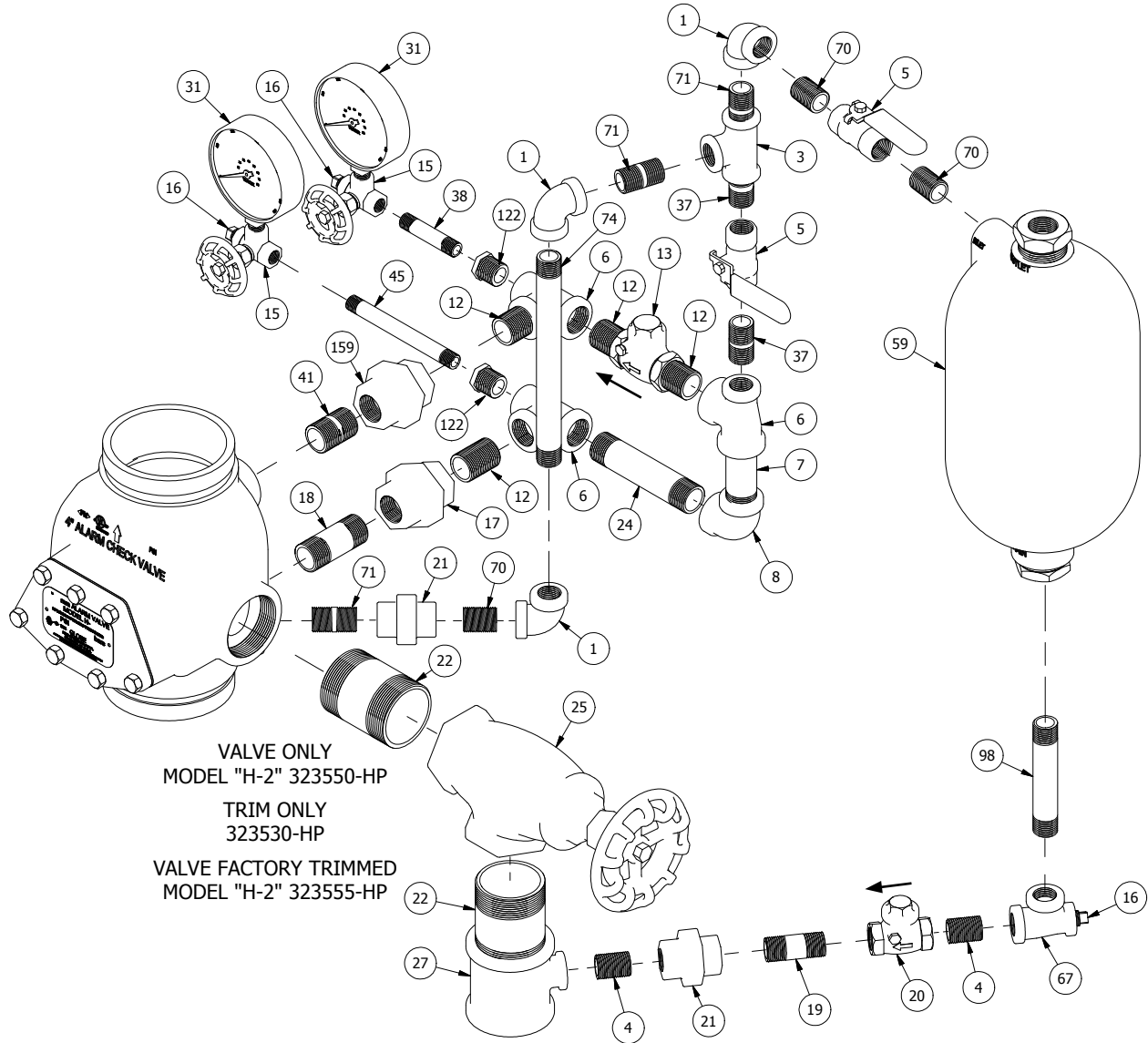
175psi (12bars) RATED  
4" MODEL "H" SERIES VERTICAL POSITION / VARIABLE PRESSURE TRIM



Det. No.	Description	Part No.	Req'd.	Det. No.	Description	Part No.	Req'd.	Det. No.	Description	Part No.	Req'd.
1	1/2" Elbow	311203	3	17	3/4" Union	311404	2	38	1/4" x 2" Nipple	310103	1
3	1/2" Tee	311303	1	18	3/4" x 2 1/2" Nipple	310402	1	41	3/4" x 1 1/2" Nipple	310413	1
4	1/2" Close Nipple	310300	2	19	1/2" x 2" Nipple	310302	1	45	1/4" x 5" Nipple	310108	1
5	1/2" Ball Valve	311692	2	20	1/2" Swing Check Valve	311639	1	59	Retard Chamber	323350	1
6	3/4" x 1/2" x 3/4" Tee	311313	3	21	1/2" Union	311403	2	67	1/2" x 1/4" x 1/2" Tee	311305	1
7	3/4" x 3" Nipple	310403	1	22	2" x 3" Nipple	310802	2	70	1/2" Close Galv. Nipple	310300-G	3
8	3/4" Elbow	311204	1	24	3/4" x 4 1/2" Nipple	310406	1	71	1/2" x 1 1/2" Galv. Nipple	310301-G	3
12	3/4" Close Nipple	310400	4	25	2" Angle Valve	311617	1	74	1/2" x 8 1/2" Galv. Nipple	310316-G	1
13	3/4" Swing Check Valve	311640	1	27	2" x 2" x 1/2" Tee	311380	1	98	1/2" x 4 1/2" Nipple	310307	1
15	1/4" 3-Way Valve	311683	2	31	3 1/2" Water Gauge (0-300psi)	300119	2	122	1/2" x 1/4" Reducing Bushing	311100	2
16	1/4" Plug	311001	3	37	1/2" x 1 1/2" Nipple	310301	2				

# GLOBE ALARM CHECK VALVE INSTALLATION AND MAINTENANCE GUIDE

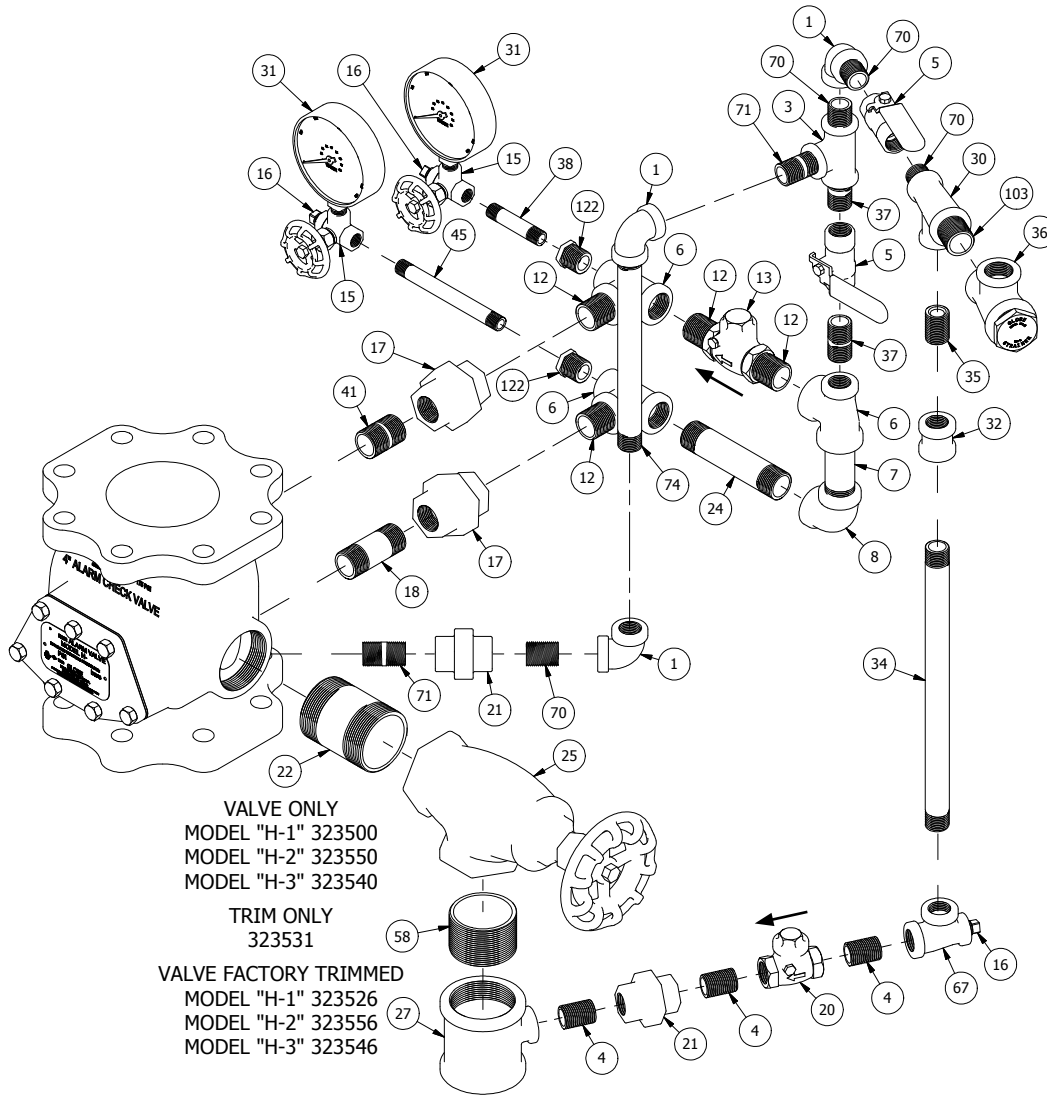
**300psi (20bars) RATED**  
**4" MODEL "H-2" VERTICAL POSITION / VARIABLE PRESSURE TRIM**



Det. No.	Description	Part No.	Req'd.	Det. No.	Description	Part No.	Req'd.	Det. No.	Description	Part No.	Req'd.
1	1/2" Elbow	311203	3	17	3/4" Union	311404	1	38	1/4" x 2" Nipple	310103	1
3	1/2" Tee	311303	1	18	3/4" x 2 1/2" Nipple	310402	1	41	3/4" x 1 1/2" Nipple	310413	1
4	1/2" Close Nipple	310300	2	19	1/2" x 2" Nipple	310302	1	45	1/4" x 5" Nipple	310108	1
5	1/2" Ball Valve	311692	2	20	1/2" Swing Check Valve	311639	1	59	Retard Chamber	323350	1
6	3/4" x 1/2" x 3/4" Tee	311313	3	21	1/2" Union	311403	2	67	1/2" x 1/4" x 1/2" Tee	311305	1
7	3/4" x 3" Nipple	310403	1	22	2" x 3" Nipple	310802	2	70	1/2" Close Galv. Nipple	310300-G	3
8	3/4" Elbow	311204	1	24	3/4" x 4 1/2" Nipple	310406	1	71	1/2" x 1 1/2" Galv. Nipple	310301-G	3
12	3/4" Close Nipple	310400	4	25	2" Angle Valve	311617	1	74	1/2" x 8 1/2" Galv. Nipple	310316-G	1
13	3/4" Swing Check Valve	311640	1	27	2" x 2" x 1/2" Tee	311380	1	98	1/2" x 4 1/2" Nipple	310307	1
15	1/4" 3-Way Valve	311683	2	31	3 1/2" Water Gauge (0-300psi)	300119	2	122	1/2" x 1/4" Reducing Bushing	311100	2
16	1/4" Plug	311001	3	37	1/2" x 1 1/2" Nipple	310301	2	159	ø.437 Restricted Orifice Union	311410	1

# GLOBE ALARM CHECK VALVE INSTALLATION AND MAINTENANCE GUIDE

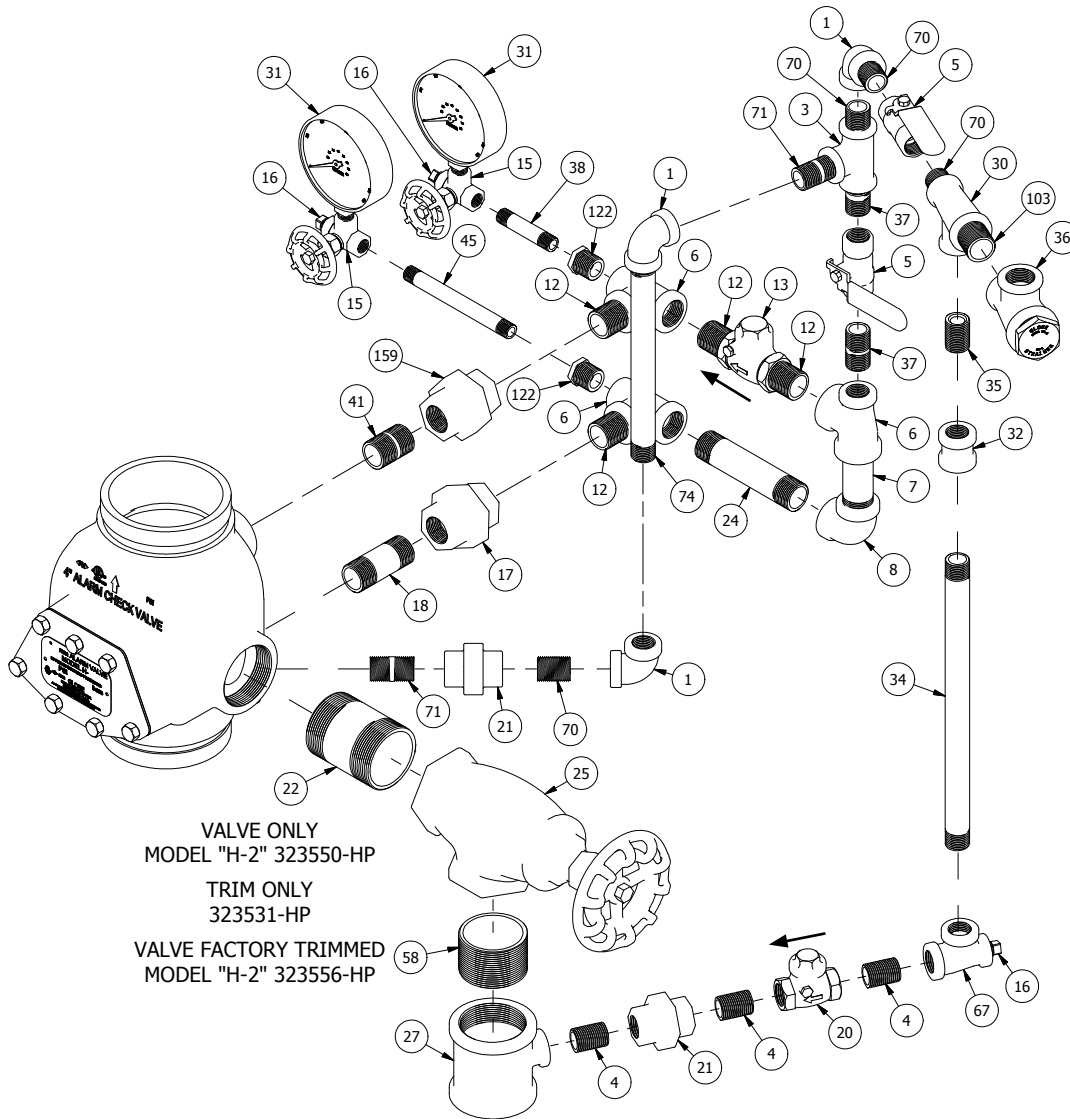
175psi (12bars) RATED  
4" MODEL "H" SERIES VERTICAL POSITION / CONSTANT PRESSURE TRIM



Det. No.	Description	Part No.	Req'd.	Det. No.	Description	Part No.	Req'd.	Det. No.	Description	Part No.	Req'd.
1	1/2" Elbow	311203	3	18	3/4" x 2 1/2" Nipple	310402	1	36	3/4" Strainer	325535	1
3	1/2" Tee	311303	1	20	1/2" Swing Check Valve	311639	1	37	1/2" x 1 1/2" Nipple	310301	2
4	1/2" Close Nipple	310300	3	21	1/2" Union	311403	2	38	1/4" x 2" Nipple	310102	1
5	1/2" Ball Valve	311692	2	22	2" x 3" Nipple	310802	1	41	3/4" x 1 1/2" Nipple	310413	1
6	3/4" x 1/2" x 3/4" Tee	311313	3	24	3/4" x 4 1/2" Nipple	310406	1	45	1/4" x 5" Nipple	310108	1
7	3/4" x 3" Nipple	310403	1	25	2" Angle Valve	311617	1	58	2" x 2 1/2" Nipple	310801	1
8	3/4" Elbow	311204	1	27	2" x 2" x 1/2" Tee	311380	1	67	1/2" x 1/4" x 1/2" Tee	311305	1
12	3/4" Close Nipple	310400	4	30	3/4" x 1/2" x 1/2" Tee	311318	1	70	1/2" Close Galv. Nipple	310300-G	4
13	3/4" Swing Check Valve	311640	1	31	3 1/2" Water Gauge (0-300psi)	300119	2	71	1/2" x 1 1/2" Galv. Nipple	310301-G	2
15	1/4" 3-Way Valve	311683	2	32	1/2" Coupling	311423	1	74	1/2" x 8 1/2" Galv. Nipple	310316-G	1
16	1/4" Plug	311001	3	34	1/2" x 12" Nipple	310318	1	103	3/4" Close Galv. Nipple	310400-G	1
17	3/4" Union	311404	2	35	Alarm Line Bleeder	320506	1	122	1/2" x 1/4" Reducing Bushing	311100	2

# GLOBE ALARM CHECK VALVE INSTALLATION AND MAINTENANCE GUIDE

300psi (20bars) RATED  
4" MODEL "H-2" VERTICAL POSITION / CONSTANT PRESSURE TRIM

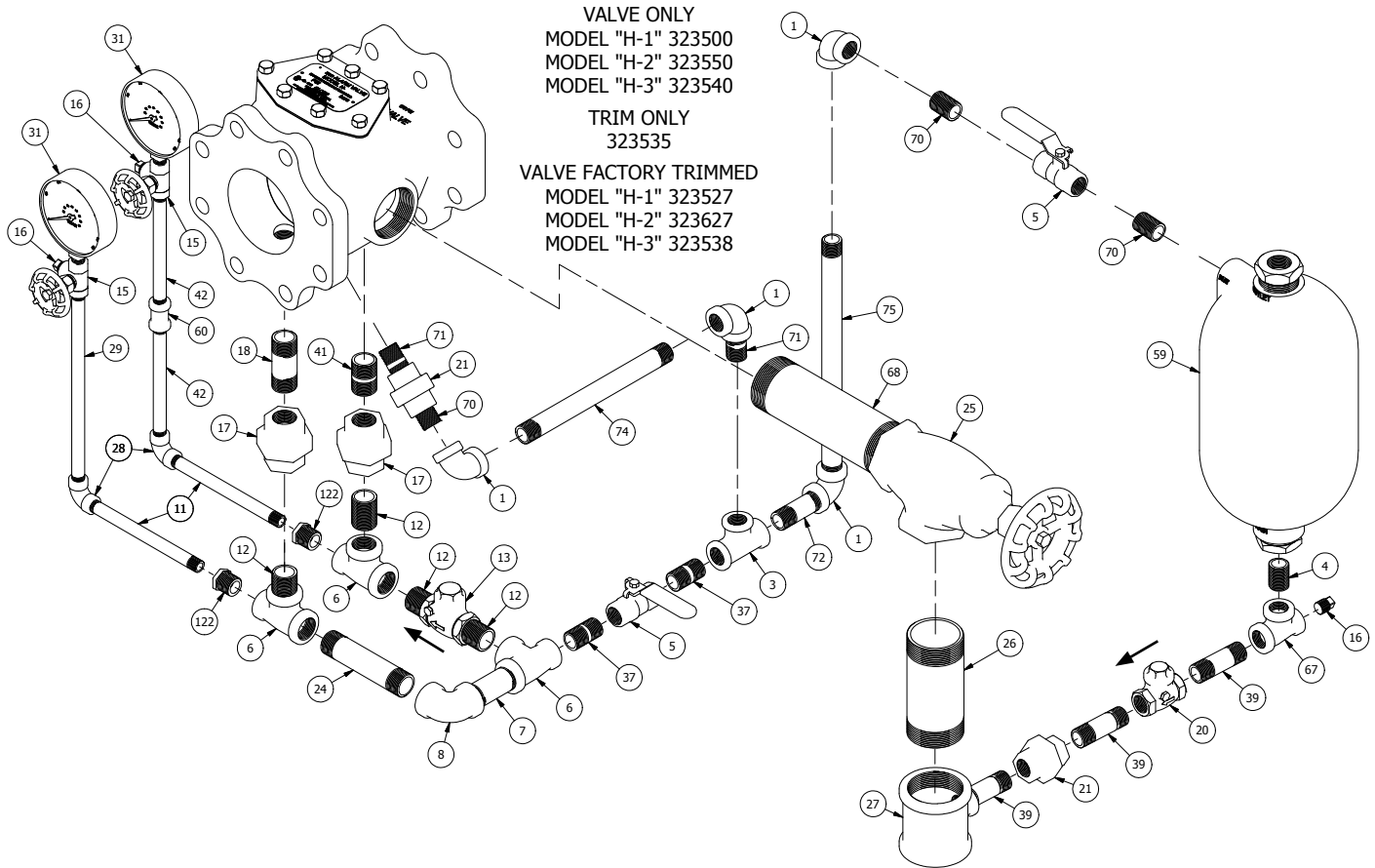


Det. No.	Description	Part No.	Req'd.	Det. No.	Description	Part No.	Req'd.	Det. No.	Description	Part No.	Req'd.
1	1/2" Elbow	311203	3	20	1/2" Swing Check Valve	311639	1	37	1/2" x 1 1/2" Nipple	310301	2
3	1/2" Tee	311303	1	21	1/2" Union	311403	2	38	1/4" x 2" Nipple	310102	1
4	1/2" Close Nipple	310300	3	22	2" x 3" Nipple	310802	1	41	3/4" x 1 1/2" Nipple	310413	1
5	1/2" Ball Valve	311692	2	24	3/4" x 4 1/2" Nipple	310406	1	45	1/4" x 5" Nipple	310108	1
6	3/4" x 1/2" x 3/4" Tee	311313	3	25	2" Angle Valve	311617	1	58	2" x 2 1/2" Nipple	310801	1
7	3/4" x 3" Nipple	310403	1	27	2" x 2" x 1/2" Tee	311380	1	67	1/2" x 1/4" x 1/2" Tee	311305	1
8	3/4" Elbow	311204	1	30	3/4" x 1/2" x 1/2" Tee	311318	1	70	1/2" Close Galv. Nipple	310300-G	4
12	3/4" Close Nipple	310400	4	31	3 1/2" Water Gauge (0-300psi)	300119	2	71	1/2" x 1 1/2" Galv. Nipple	310301-G	2
13	3/4" Swing Check Valve	311640	1	32	1/2" Coupling	311423	1	74	1/2" x 8 1/2" Galv. Nipple	310316-G	1
15	1/4" 3-Way Valve	311683	2	34	1/2" x 12" Nipple	310318	1	103	3/4" Close Galv. Nipple	310400-G	1
16	1/4" Plug	311001	3	35	Alarm Line Bleeder	320506	1	122	1/2" x 1/4" Reducing Bushing	311100	2
17	3/4" Union	311404	1	36	3/4" Strainer	325535	1	159	ø.437 Restricted Orifice Union	311410	1
18	3/4" x 2 1/2" Nipple	310402	1								

# GLOBE ALARM CHECK VALVE INSTALLATION AND MAINTENANCE GUIDE

175psi (12bars) RATED

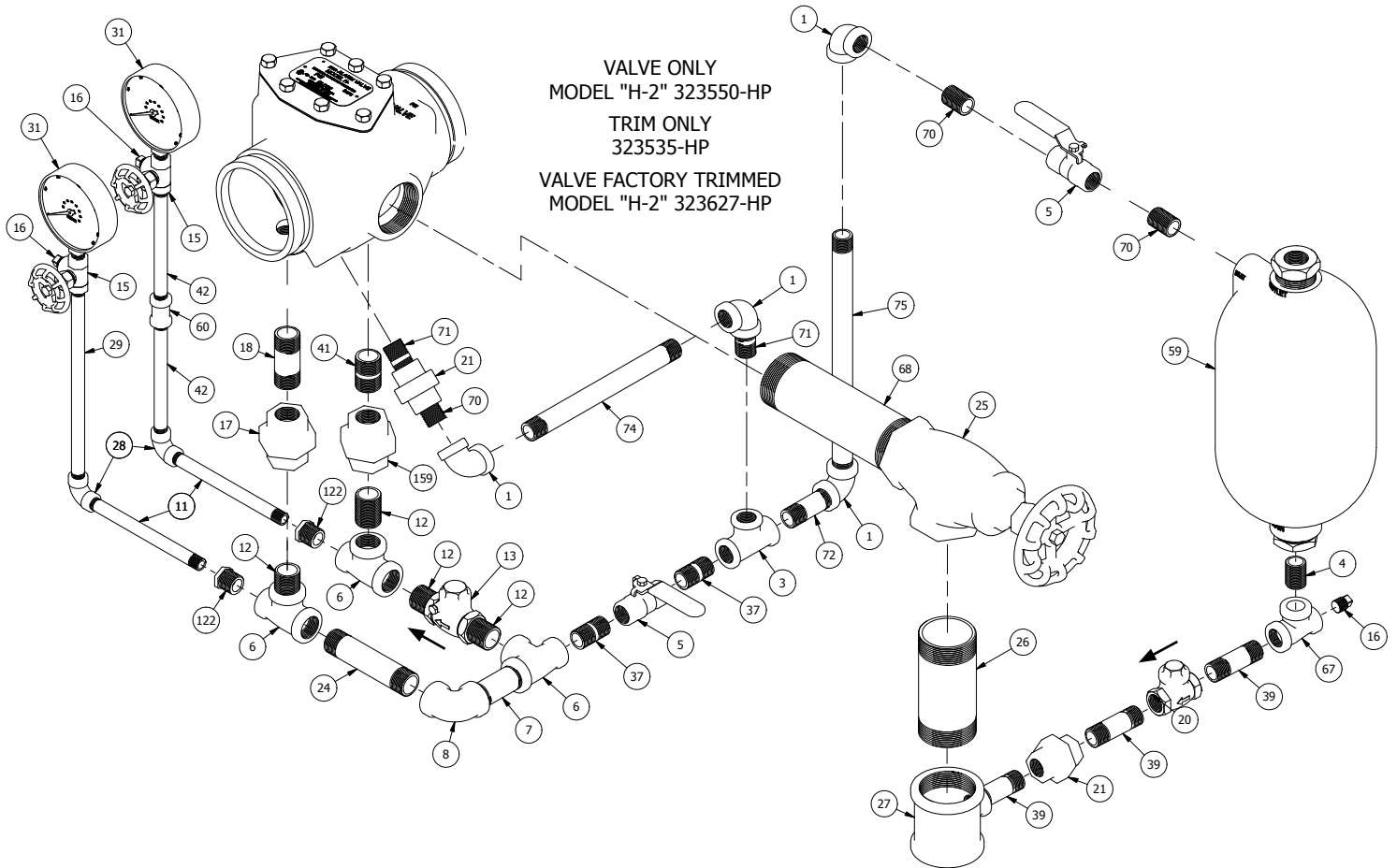
4" MODEL "H" SERIES HORIZONTAL POSITION / VARIABLE PRESSURE TRIM



Det. No.	Description	Part No.	Req'd.	Det. No.	Description	Part No.	Req'd.	Det. No.	Description	Part No.	Req'd.
1	1/2" Elbow	311203	4	18	3/4" x 2 1/2" Nipple	310402	1	41	3/4" x 1 1/2" Nipple	310413	1
3	1/2" Tee	311303	1	20	1/2" Swing Check Valve	311639	1	42	1/4" x 6" Nipple	310110	2
4	1/2" Close Nipple	310300	1	21	1/2" Union	311403	2	59	Retard Chamber	323350	1
5	1/2" Ball Valve	311692	2	24	3/4" x 4 1/2" Nipple	310406	1	60	1/4" Coupling	311402	1
6	3/4" x 1/2" x 3/4" Tee	311313	3	25	2" Angle Valve	311617	1	67	1/2" x 1/4" x 1/2" Tee	311305	1
7	3/4" x 3" Nipple	310403	1	26	2" x 5" Nipple	310803	1	68	2" x 7 1/2" Nipple	310809	1
8	3/4" Elbow	311204	1	27	2" x 2" x 1/2" Tee	311380	1	70	1/2" Close Galv. Nipple	310300-G	3
11	1/4" x 6 1/2" Nipple	310115	2	28	1/4" Elbow	311201	2	71	1/2" x 1 1/2" Galv. Nipple	310301-G	2
12	3/4" Close Nipple	310400	4	29	1/4" x 10" Nipple	310136	1	72	1/2" x 2 1/2" Galv. Nipple	310303-G	1
13	3/4" Swing Check Valve	311640	1	31	3 1/2" Water Gauge (0-300psi)	300119	2	74	1/2" x 8 1/2" Galv. Nipple	310316-G	1
15	1/4" 3-Way Valve	311683	2	37	1/2" x 1 1/2" Nipple	310301	2	75	1/2" x 12" Galv. Nipple	310318-G	1
16	1/4" Plug	311001	3	39	1/2" x 2 1/2" Nipple	310303	3	122	1/2" x 1/4" Reducing Bushing	311100	2
17	3/4" Union	311404	2								

# GLOBE ALARM CHECK VALVE INSTALLATION AND MAINTENANCE GUIDE

**300psi (20bars) RATED**  
**4" MODEL "H-2" HORIZONTAL POSITION / VARIABLE PRESSURE TRIM**

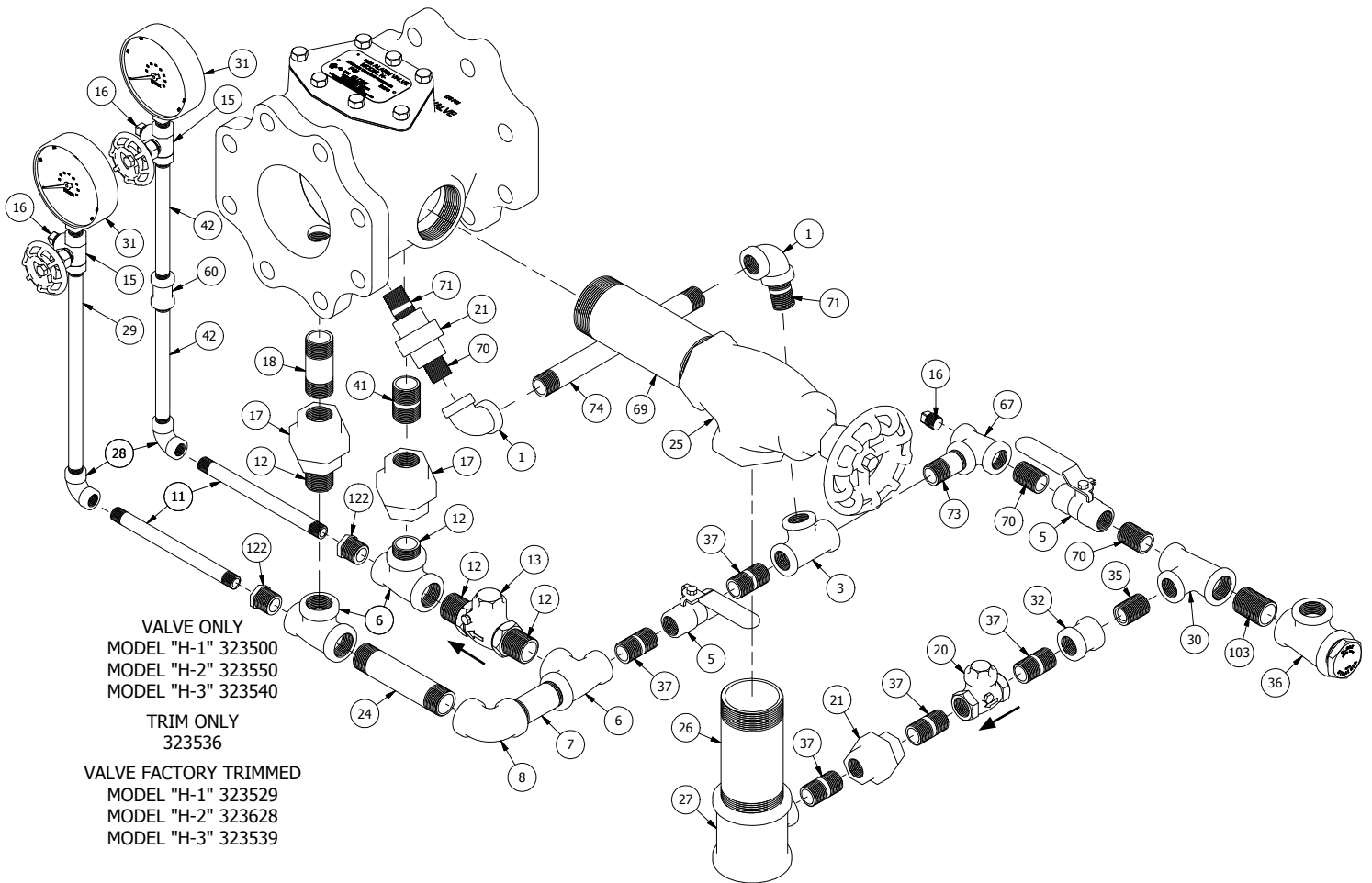


Det. No.	Description	Part No.	Req'd.	Det. No.	Description	Part No.	Req'd.	Det. No.	Description	Part No.	Req'd.
1	1/2" Elbow	311203	4	18	3/4" x 2 1/2" Nipple	310402	1	42	1/4" x 6" Nipple	310110	2
3	1/2" Tee	311303	1	20	1/2" Swing Check Valve	311639	1	59	Retard Chamber	323350	1
4	1/2" Close Nipple	310300	1	21	1/2" Union	311403	2	60	1/4" Coupling	311402	1
5	1/2" Ball Valve	311692	2	24	3/4" x 4 1/2" Nipple	310406	1	67	1/2" x 1/4" x 1/2" Tee	311305	1
6	3/4" x 1/2" x 3/4" Tee	311313	3	25	2" Angle Valve	311617	1	68	2" x 7 1/2" Nipple	310809	1
7	3/4" x 3" Nipple	310403	1	26	2" x 5" Nipple	310803	1	70	1/2" Close Galv. Nipple	310300-G	3
8	3/4" Elbow	311204	1	27	2" x 2" x 1/2" Tee	311380	1	71	1/2" x 1 1/2" Galv. Nipple	310301-G	2
11	1/4" x 6 1/2" Nipple	310115	2	28	1/4" Elbow	311201	2	72	1/2" x 2 1/2" Galv. Nipple	310303-G	1
12	3/4" Close Nipple	310400	4	29	1/4" x 10" Nipple	310136	1	74	1/2" x 8 1/2" Galv. Nipple	310316-G	1
13	3/4" Swing Check Valve	311640	1	31	3 1/2" Water Gauge (0-300psi)	300119	2	75	1/2" x 12" Galv. Nipple	310318-G	1
15	1/4" 3-Way Valve	311683	2	37	1/2" x 1 1/2" Nipple	310301	2	122	1/2" x 1/4" Reducing Bushing	311100	2
16	1/4" Plug	311001	3	39	1/2" x 2 1/2" Nipple	310303	3	159	ø.437 Restricted Orifice	311410	1
17	3/4" Union	311404	1	41	3/4" x 1 1/2" Nipple	310413	1				

# GLOBE ALARM CHECK VALVE INSTALLATION AND MAINTENANCE GUIDE

175psi (12bars) RATED

4" MODEL "H" SERIES HORIZONTAL POSITION / CONSTANT PRESSURE TRIM



VALVE ONLY  
MODEL "H-1" 323500  
MODEL "H-2" 323550  
MODEL "H-3" 323540

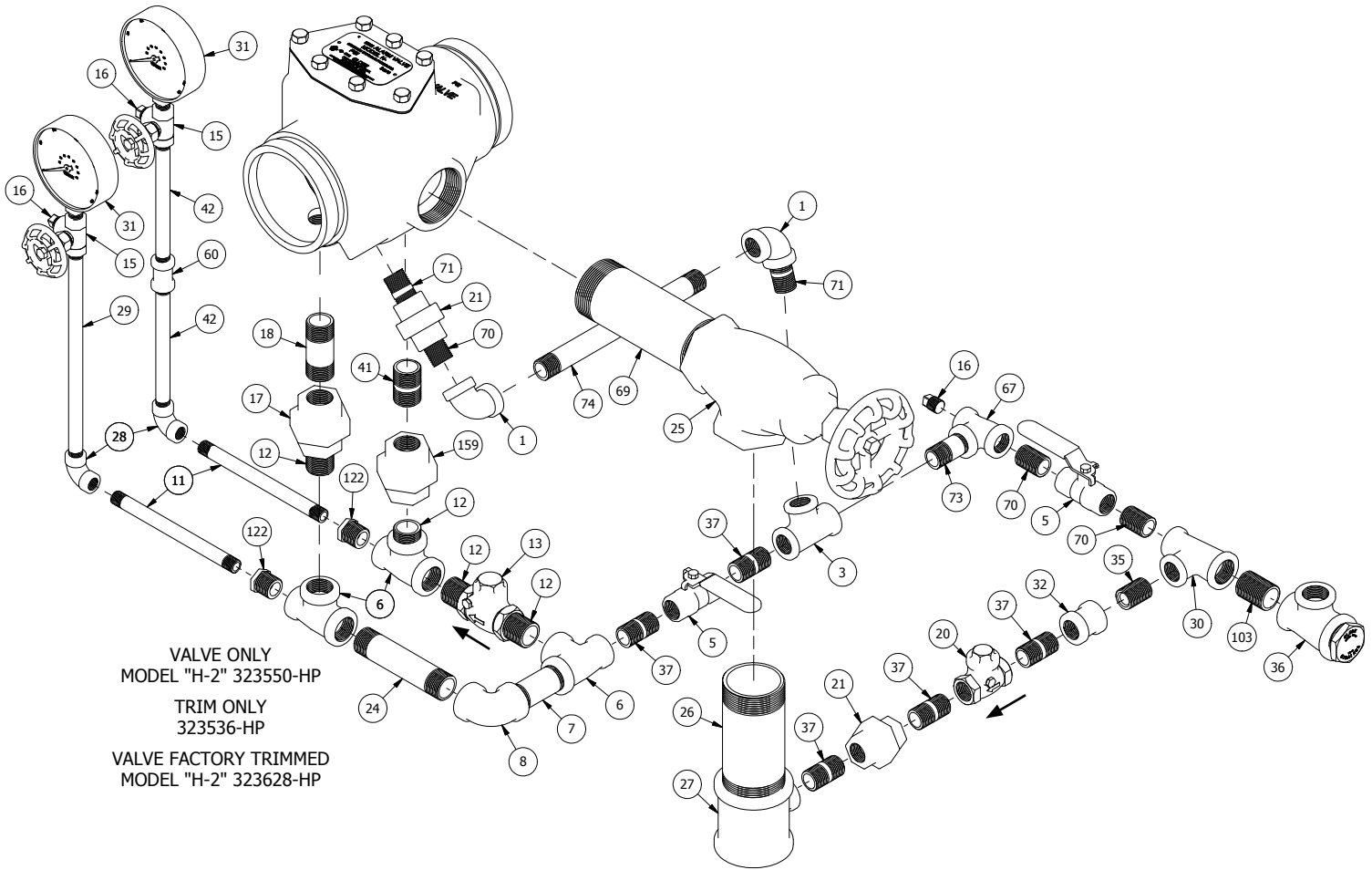
TRIM ONLY  
323536

VALVE FACTORY TRIMMED  
MODEL "H-1" 323529  
MODEL "H-2" 323628  
MODEL "H-3" 323539

Det. No.	Description	Part No.	Req'd.	Det. No.	Description	Part No.	Req'd.	Det. No.	Description	Part No.	Req'd.
1	1/2" Elbow	311203	2	20	1/2" Swing Check Valve	311639	1	37	1/2" x 1 1/2" Nipple	310301	5
3	1/2" Tee	311303	1	21	1/2" Union	311403	2	41	3/4" x 1 1/2" Nipple	310413	1
5	1/2" Ball Valve	311692	2	24	3/4" x 4 1/2" Nipple	310406	1	42	1/4" x 6" Nipple	310110	2
6	3/4" x 1/2" x 3/4" Tee	311313	3	25	2" Angle Valve	311617	1	60	1/4" Coupling	311402	1
7	3/4" x 3" Nipple	310403	1	26	2" x 5" Nipple	310803	1	67	1/2" x 1/4" x 1/2" Tee	311305	1
8	3/4" Elbow	311204	1	27	2" x 2" x 1/2" Tee	311380	1	69	2" x 6" Nipple	310808	1
11	1/4" x 6 1/2" Nipple	310115	2	28	1/4" Elbow	311201	2	70	1/2" Close Galv. Nipple	310300-G	3
12	3/4" Close Nipple	310400	4	29	1/4" x 10" Nipple	310136	1	71	1/2" x 1 1/2" Galv. Nipple	310301-G	2
13	3/4" Swing Check Valve	311640	1	30	3/4" x 1/2" x 1/2" Tee	311318	1	73	1/2" x 2" Galv. Nipple	310302-G	1
15	1/4" 3-Way Valve	311683	2	31	3 1/2" Water Gauge (0-300psi)	300119	2	74	1/2" x 8 1/2" Galv. Nipple	310316-G	1
16	1/4" Plug	311001	3	32	1/2" Coupling	311423	1	103	3/4" Close Galv. Nipple	310400-G	1
17	3/4" Union	311404	2	35	Alarm Line Bleeder	320506	1	122	1/2" x 1/4" Reducing Bushing	311100	2
18	3/4" x 2 1/2" Nipple	310402	1	36	3/4" Strainer	325535	1				

# GLOBE ALARM CHECK VALVE INSTALLATION AND MAINTENANCE GUIDE

**300psi (20bars) RATED**  
**4" MODEL "H-2" HORIZONTAL POSITION / CONSTANT PRESSURE TRIM**



VALVE ONLY  
MODEL "H-2" 323550-HP

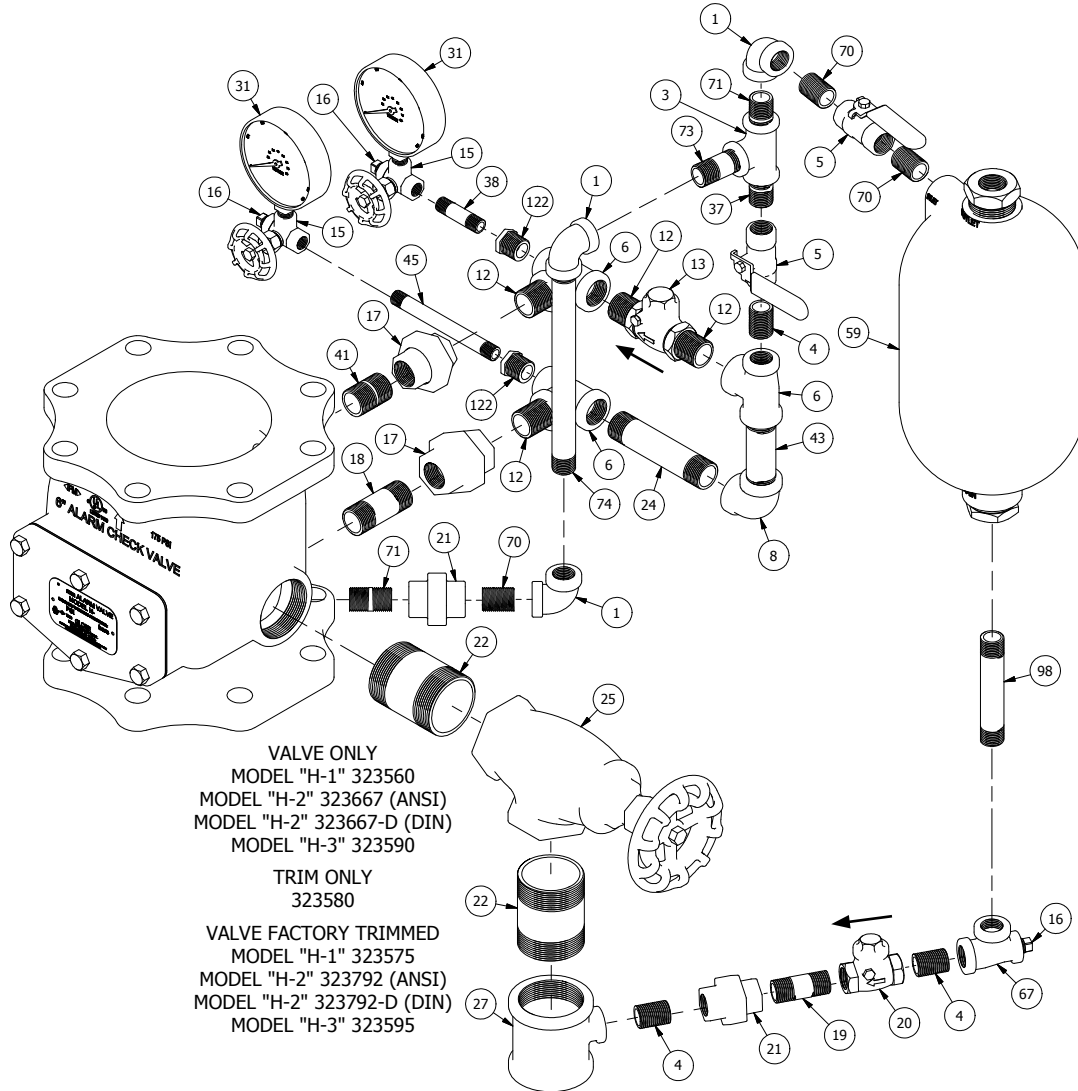
TRIM ONLY  
323536-HP

VALVE FACTORY TRIMMED  
MODEL "H-2" 323628-HP

Det. No.	Description	Part No.	Req'd.	Det. No.	Description	Part No.	Req'd.	Det. No.	Description	Part No.	Req'd.
1	1/2" Elbow	311203	2	20	1/2" Swing Check Valve	311639	1	37	1/2" x 1 1/2" Nipple	310301	5
3	1/2" Tee	311303	1	21	1/2" Union	311403	2	41	3/4" x 1 1/2" Nipple	310413	1
5	1/2" Ball Valve	311692	2	24	3/4" x 4 1/2" Nipple	310406	1	42	1/4" x 6" Nipple	310110	2
6	3/4" x 1/2" x 3/4" Tee	311313	3	25	2" Angle Valve	311617	1	60	1/4" Coupling	311402	1
7	3/4" x 3" Nipple	310403	1	26	2" x 5" Nipple	310803	1	67	1/2" x 1/4" x 1/2" Tee	311305	1
8	3/4" Elbow	311204	1	27	2" x 2" x 1/2" Tee	311380	1	69	2" x 6" Nipple	310808	1
11	1/4" x 6 1/2" Nipple	310115	2	28	1/4" Elbow	311201	2	70	1/2" Close Galv. Nipple	310300-G	3
12	3/4" Close Nipple	310400	4	29	1/4" x 10" Nipple	310136	1	71	1/2" x 1 1/2" Galv. Nipple	310301-G	2
13	3/4" Swing Check Valve	311640	1	30	3/4" x 1/2" x 1/2" Tee	311318	1	73	1/2" x 2" Galv. Nipple	310302-G	1
15	1/4" 3-Way Valve	311683	2	31	3 1/2" Water Gauge (0-300psi)	300119	2	74	1/2" x 8 1/2" Galv. Nipple	310316-G	1
16	1/4" Plug	311001	3	32	1/2" Coupling	311423	1	103	3/4" Close Galv. Nipple	310400-G	1
17	3/4" Union	311404	1	35	Alarm Line Bleeder	320506	1	122	1/2" x 1/4" Reducing Bushing	311100	2
18	3/4" x 2 1/2" Nipple	310402	1	36	3/4" Strainer	325535	1	159	ø.437 Restricted Orifice Union	311410	1

# GLOBE ALARM CHECK VALVE INSTALLATION AND MAINTENANCE GUIDE

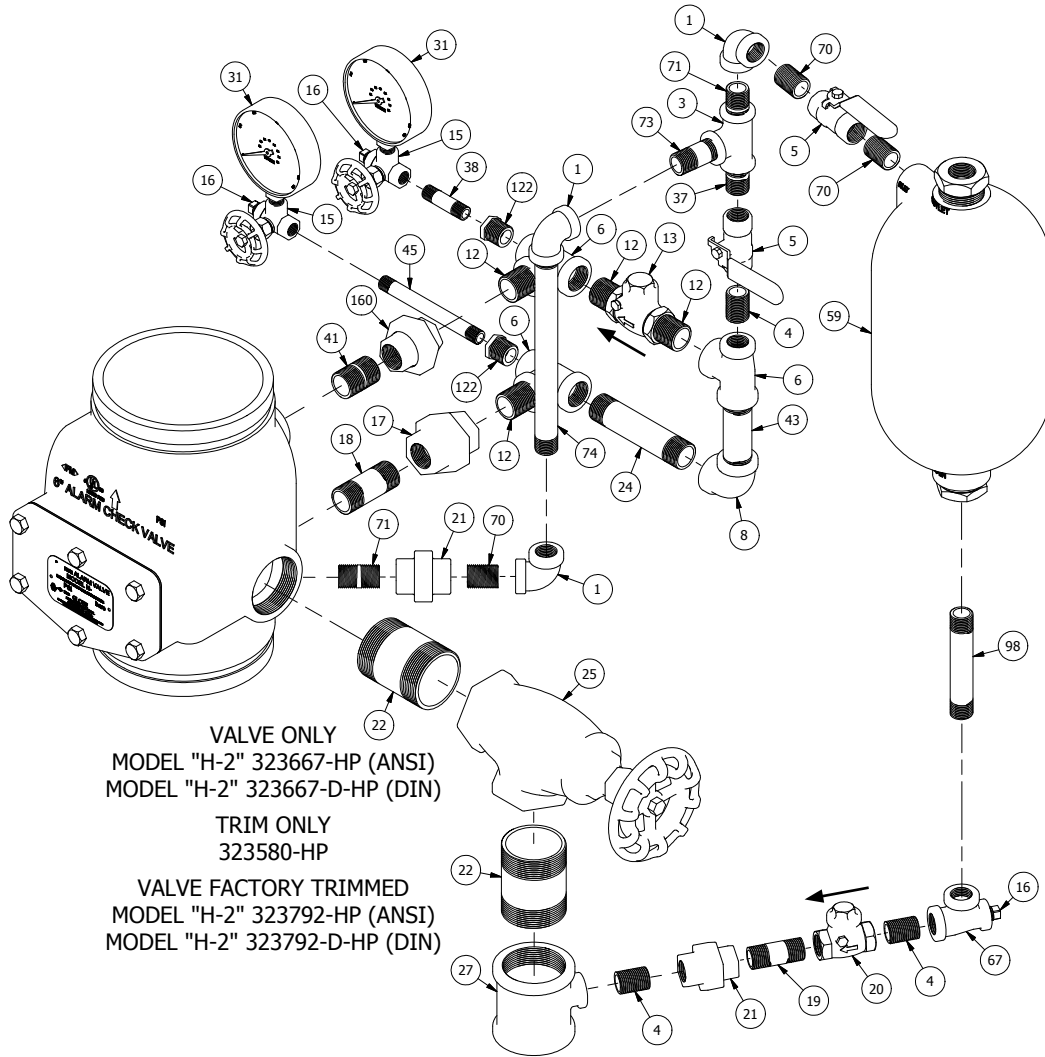
175psi (12bars) RATED  
6" MODEL "H" SERIES VERTICAL POSITION / VARIABLE PRESSURE TRIM



Det. No.	Description	Part No.	Req'd.	Det. No.	Description	Part No.	Req'd.	Det. No.	Description	Part No.	Req'd.
1	1/2" Elbow	311203	3	18	3/4" x 2 1/2" Nipple	310402	1	41	3/4" x 1 1/2" Nipple	310413	1
3	1/2" Tee	311303	1	19	1/2" x 2" Nipple	310302	1	43	3/4" x 3 1/2" Nipple	310404	1
4	1/2" Close Nipple	310300	3	20	1/2" Swing Check Valve	311639	1	45	1/4" x 5" Nipple	310108	1
5	1/2" Ball Valve	311692	2	21	1/2" Union	311403	2	59	Retard Chamber	323350	1
6	3/4" x 1/2" x 3/4" Tee	311313	3	22	2" x 3" Nipple	310802	2	67	1/2" x 1/4" x 1/2" Tee	311305	1
8	3/4" Elbow	311204	1	24	3/4" x 4 1/2" Nipple	310406	1	70	1/2" Close Galv. Nipple	310300-G	3
12	3/4" Close Nipple	310400	4	25	2" Angle Valve	311617	1	71	1/2" x 1 1/2" Galv. Nipple	310301-G	2
13	3/4" Swing Check Valve	311640	1	27	2" x 2" x 1/2" Tee	311380	1	73	1/2" x 2" Galv. Nipple	310302-G	1
15	1/4" 3-Way Valve	311683	2	31	3 1/2" Water Gauge (0-300psi)	300119	2	74	1/2" x 8 1/2" Galv. Nipple	310316-G	1
16	1/4" Plug	311001	3	37	1/2" x 1 1/2" Nipple	310301	1	98	1/2" x 4 1/2" Nipple	310307	1
17	3/4" Union	311404	2	38	1/4" x 2" Nipple	310102	1	122	1/2" x 1/4" Reducing Bushing	311100	2

# GLOBE ALARM CHECK VALVE INSTALLATION AND MAINTENANCE GUIDE

**300psi (20bars) RATED**  
**6" MODEL "H-2" VERTICAL POSITION / VARIABLE PRESSURE TRIM**

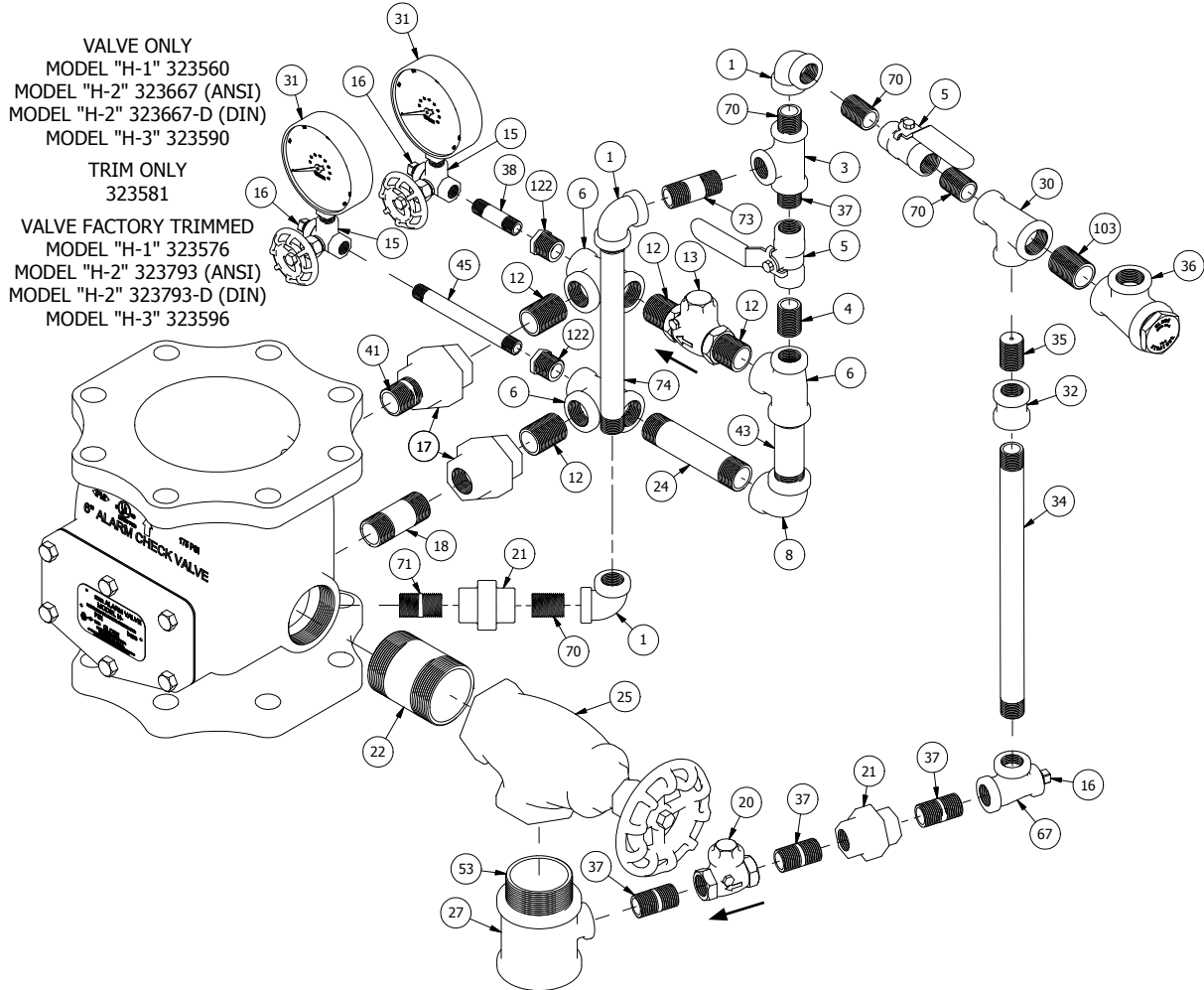


Det. No.	Description	Part No.	Req'd.	Det. No.	Description	Part No.	Req'd.	Det. No.	Description	Part No.	Req'd.
1	1/2" Elbow	311203	3	18	3/4" x 2 1/2" Nipple	310402	1	41	3/4" x 1 1/2" Nipple	310413	1
3	1/2" Tee	311303	1	19	1/2" x 2" Nipple	310302	1	43	3/4" x 3 1/2" Nipple	310404	1
4	1/2" Close Nipple	310300	3	20	1/2" Swing Check Valve	311639	1	45	1/4" x 5" Nipple	310108	1
5	1/2" Ball Valve	311692	2	21	1/2" Union	311403	2	59	Retard Chamber	323350	1
6	3/4" x 1/2" x 3/4" Tee	311313	3	22	2" x 3" Nipple	310802	2	67	1/2" x 1/4" x 1/2" Tee	311305	1
8	3/4" Elbow	311204	1	24	3/4" x 4 1/2" Nipple	310406	1	70	1/2" Close Galv. Nipple	310300-G	3
12	3/4" Close Nipple	310400	4	25	2" Angle Valve	311617	1	71	1/2" x 1 1/2" Galv. Nipple	310301-G	2
13	3/4" Swing Check Valve	311640	1	27	2" x 2" x 1/2" Tee	311380	1	73	1/2" x 2" Galv. Nipple	310302-G	1
15	1/4" 3-Way Valve	311683	2	31	3 1/2" Water Gauge (0-300psi)	300119	2	74	1/2" x 8 1/2" Galv. Nipple	310316-G	1
16	1/4" Plug	311001	3	37	1/2" x 1 1/2" Nipple	310301	1	98	1/2" x 4 1/2" Nipple	310307	1
17	3/4" Union	311404	1	38	1/4" x 2" Nipple	310102	1	122	1/2" x 1/4" Reducing Bushing	311100	2
								160	ø.500 Restricted Orifice Union	311411	1

# GLOBE ALARM CHECK VALVE INSTALLATION AND MAINTENANCE GUIDE

**175psi (12bars) RATED**

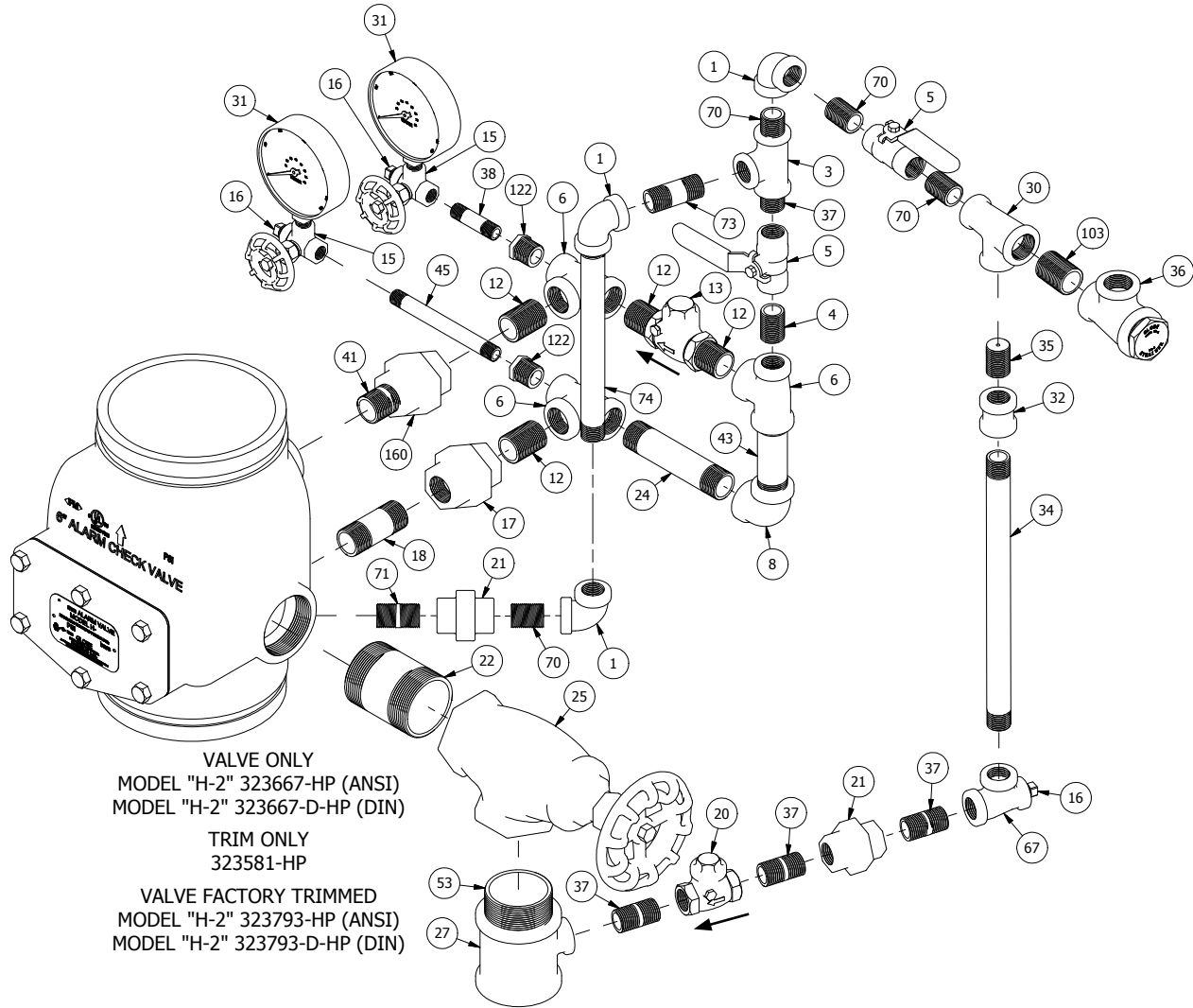
**6" MODEL "H" SERIES VERTICAL POSITION / CONSTANT PRESSURE TRIM**



Det. No.	Description	Part No.	Req'd.	Det. No.	Description	Part No.	Req'd.	Det. No.	Description	Part No.	Req'd.
1	1/2" Elbow	311203	3	21	1/2" Union	311403	2	38	1/4" x 2" Nipple	310102	1
3	1/2" Tee	311303	1	22	2" x 3" Nipple	310802	1	41	3/4" x 1 1/2" Nipple	310413	1
4	1/2" Close Nipple	310300	1	24	3/4" x 4 1/2" Nipple	310406	1	43	3/4" x 3 1/2" Nipple	310404	1
5	1/2" Ball Valve	311692	2	25	2" Angle Valve	311617	1	45	1/4" x 5" Nipple	310108	1
6	3/4" x 1/2" x 3/4" Tee	311313	3	27	2" x 2" x 1/2" Tee	311380	1	53	2" Close Nipple	310800	1
8	3/4" Elbow	311204	1	30	3/4" x 1/2" x 1/2" Tee	311318	1	67	1/2" x 1/4" x 1/2" Tee	311305	1
12	3/4" Close Nipple	310400	4	31	3 1/2" Water Gauge (0-300psi)	300119	2	70	1/2" Close Galv. Nipple	310300-G	4
13	3/4" Swing Check Valve	311640	1	32	1/2" Coupling	311423	1	71	1/2" x 1 1/2" Galv. Nipple	310301-G	1
15	1/4" 3-Way Valve	311683	2	34	1/2" x 12" Nipple	310318	1	73	1/2" x 2" Galv. Nipple	310302-G	1
16	1/4" Plug	311001	3	35	Alarm Line Bleeder	320506	1	74	1/2" x 8 1/2" Galv. Nipple	310316-G	1
17	3/4" Union	311404	2	36	3/4" Strainer	325535	1	103	3/4" Close Galv. Nipple	310400-G	1
18	3/4" x 2 1/2" Nipple	310402	1	37	1/2" x 1 1/2" Nipple	310301	4	122	1/2" x 1/4" Reducing Bushing	311100	2
20	1/2" Swing Check Valve	311639	1								

# GLOBE ALARM CHECK VALVE INSTALLATION AND MAINTENANCE GUIDE

**300psi (20bars) RATED**  
**6" MODEL "H-2" VERTICAL POSITION / CONSTANT PRESSURE TRIM**



VALVE ONLY  
MODEL "H-2" 323667-HP (ANSI)  
MODEL "H-2" 323667-D-HP (DIN)

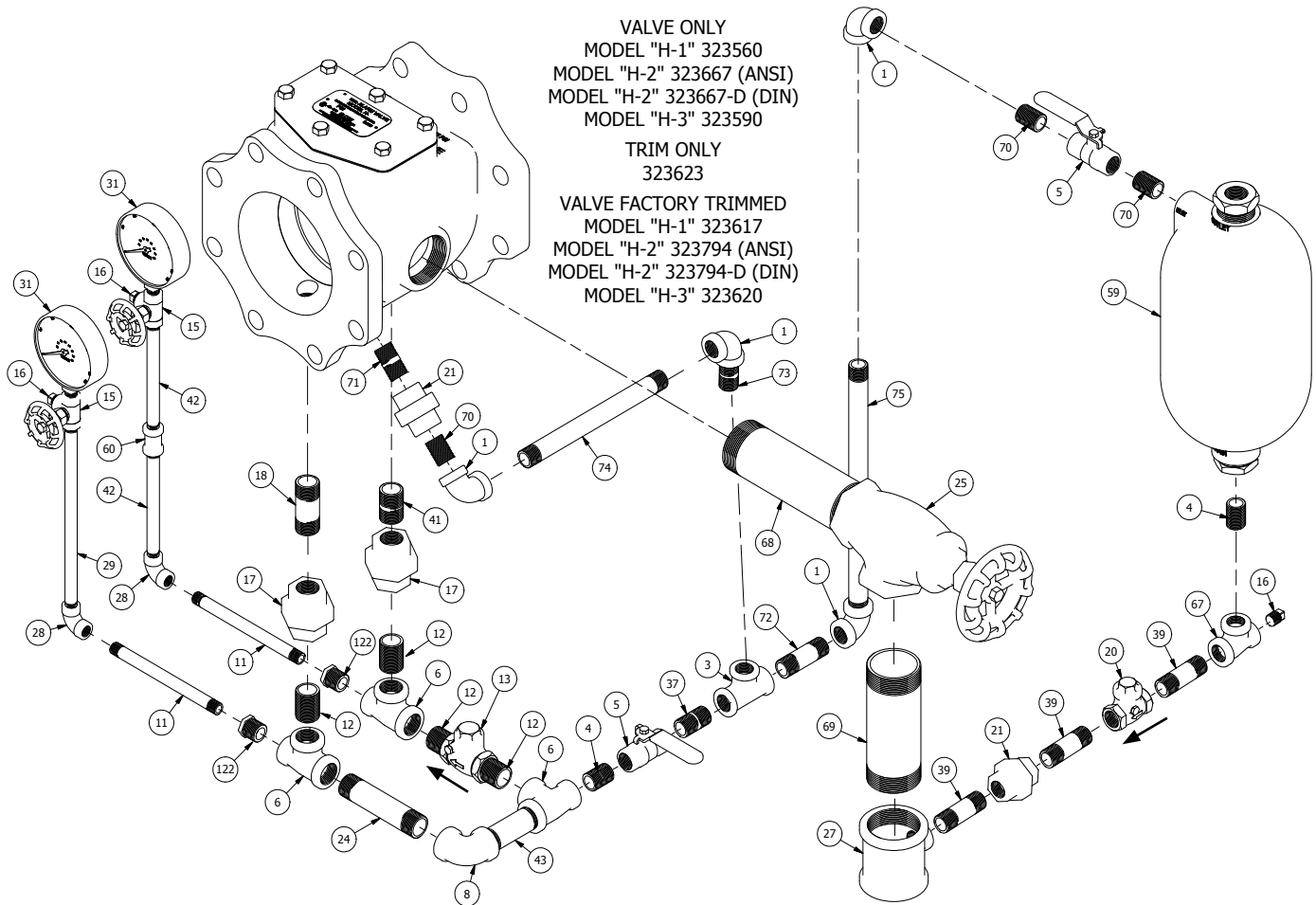
TRIM ONLY  
323581-HP

VALVE FACTORY TRIMMED  
MODEL "H-2" 323793-HP (ANSI)  
MODEL "H-2" 323793-D-HP (DIN)

Det. No.	Description	Part No.	Req'd.	Det. No.	Description	Part No.	Req'd.	Det. No.	Description	Part No.	Req'd.
1	1/2" Elbow	311203	3	21	1/2" Union	311403	2	41	3/4" x 1 1/2" Nipple	310413	1
3	1/2" Tee	311303	1	22	2" x 3" Nipple	310802	1	43	3/4" x 3 1/2" Nipple	310404	1
4	1/2" Close Nipple	310300	1	24	3/4" x 4 1/2" Nipple	310406	1	45	1/4" x 5" Nipple	310108	1
5	1/2" Ball Valve	311692	2	25	2" Angle Valve	311617	1	53	2" Close Nipple	310800	1
6	3/4" x 1/2" x 3/4" Tee	311313	3	27	2" x 2" x 1/2" Tee	311380	1	67	1/2" x 1/4" x 1/2" Tee	311305	1
8	3/4" Elbow	311204	1	30	3/4" x 1/2" x 1/2" Tee	311318	1	70	1/2" Close Galv. Nipple	310300-G	4
12	3/4" Close Nipple	310400	4	31	3 1/2" Water Gauge (0-300psi)	300119	2	71	1/2" x 1 1/2" Galv. Nipple	310301-G	1
13	3/4" Swing Check Valve	311640	1	32	1/2" Coupling	311423	1	73	1/2" x 2" Galv. Nipple	310302-G	1
15	1/4" 3-Way Valve	311683	2	34	1/2" x 12" Nipple	310318	1	74	1/2" x 8 1/2" Galv. Nipple	310316-G	1
16	1/4" Plug	311001	3	35	Alarm Line Bleeder	320506	1	103	3/4" Close Galv. Nipple	310400-G	1
17	3/4" Union	311404	1	36	3/4" Strainer	325535	1	122	1/2" x 1/4" Reducing Bushing	311100	2
18	3/4" x 2 1/2" Nipple	310402	1	37	1/2" x 1 1/2" Nipple	310301	4	160	ø.500 Restricted Orifice Union	311411	1
20	1/2" Swing Check Valve	311639	1	38	1/4" x 2" Nipple	310102	1				

# GLOBE ALARM CHECK VALVE INSTALLATION AND MAINTENANCE GUIDE

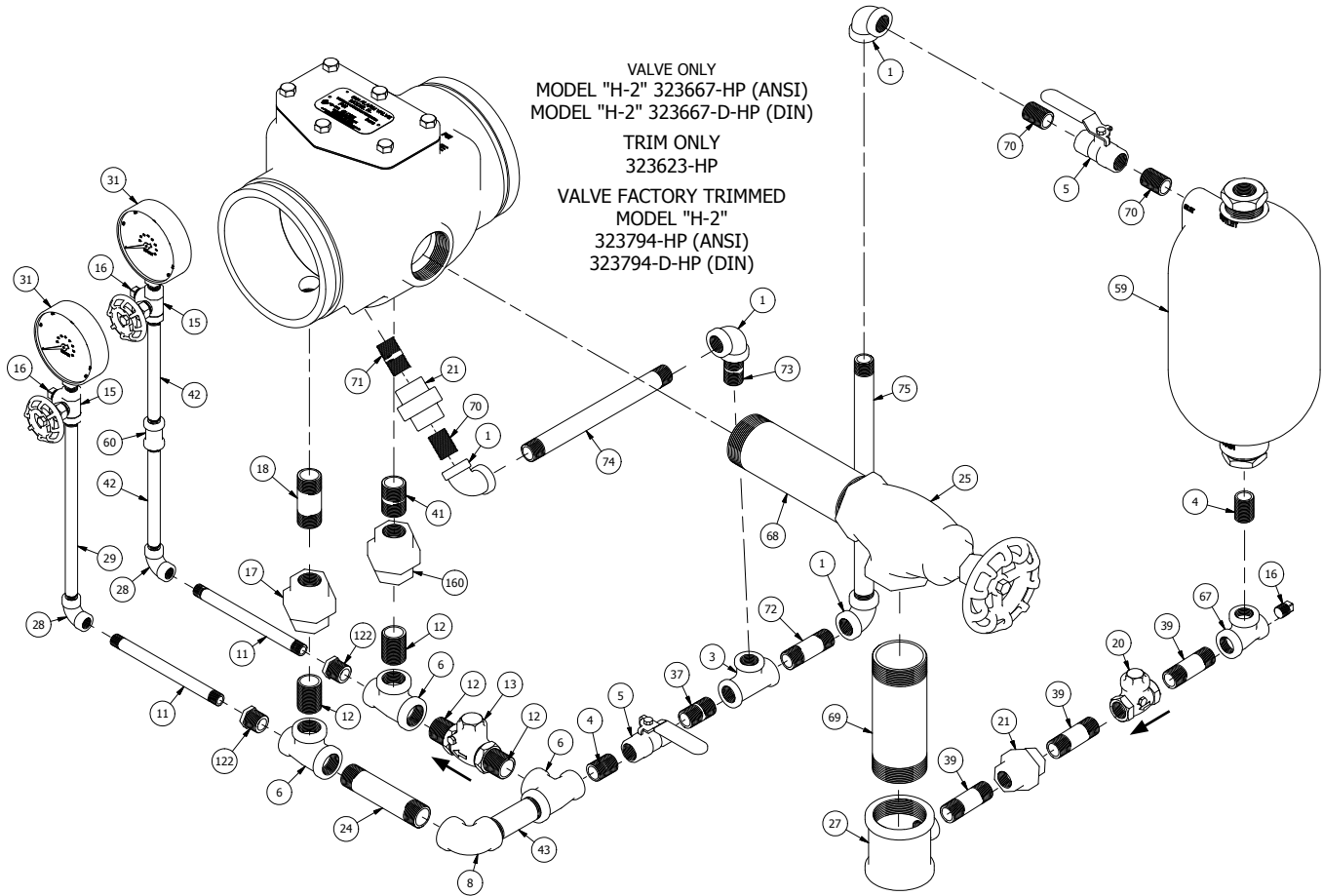
175psi (12bars) RATED  
6" MODEL "H" SERIES HORIZONTAL POSITION / VARIABLE PRESSURE TRIM



Det. No.	Description	Part No.	Req'd.	Det. No.	Description	Part No.	Req'd.	Det. No.	Description	Part No.	Req'd.
1	1/2" Elbow	311203	4	20	1/2" Swing Check Valve	311639	1	59	Retard Chamber	323350	1
3	1/2" Tee	311303	1	21	1/2" Union	311403	2	60	1/4" Coupling	311402	1
4	1/2" Close Nipple	310300	2	24	3/4" x 4 1/2" Nipple	310406	1	67	1/2" x 1/4" x 1/2" Tee	311305	1
5	1/2" Ball Valve	311692	2	25	2" Angle Valve	311617	1	68	2" x 7 1/2" Nipple	310809	1
6	3/4" x 1/2" x 3/4" Tee	311313	3	27	2" x 2" x 1/2" Tee	311380	1	69	2" x 6" Nipple	310808	1
8	3/4" Elbow	311204	1	28	1/4" Elbow	311201	2	70	1/2" Close Galv. Nipple	310300-G	3
11	1/4" x 6 1/2" Nipple	310115	2	29	1/4" x 10" Nipple	310136	1	71	1/2" x 1 1/2" Galv. Nipple	310301-G	1
12	3/4" Close Nipple	310400	4	31	3 1/2" Water Gauge (0-300psi)	300119	2	72	1/2" x 2 1/2" Galv. Nipple	310303-G	1
13	3/4" Swing Check Valve	311640	1	37	1/2" x 1 1/2" Nipple	310301	1	73	1/2" x 2" Galv. Nipple	310302-G	1
15	1/4" 3-Way Valve	311683	2	39	1/2" x 2 1/2" Nipple	310303	3	74	1/2" x 8 1/2" Galv. Nipple	310316-G	1
16	1/4" Plug	311001	3	41	3/4" x 1 1/2" Nipple	310413	1	75	1/2" x 12" Galv. Nipple	310318-G	1
17	3/4" Union	311404	2	42	1/4" x 6" Nipple	310110	2	122	1/2" x 1/4" Reducing Bushing	311100	2
18	3/4" x 2 1/2" Nipple	310402	1	43	3/4" x 3 1/2" Nipple	310404	1				

# GLOBE ALARM CHECK VALVE INSTALLATION AND MAINTENANCE GUIDE

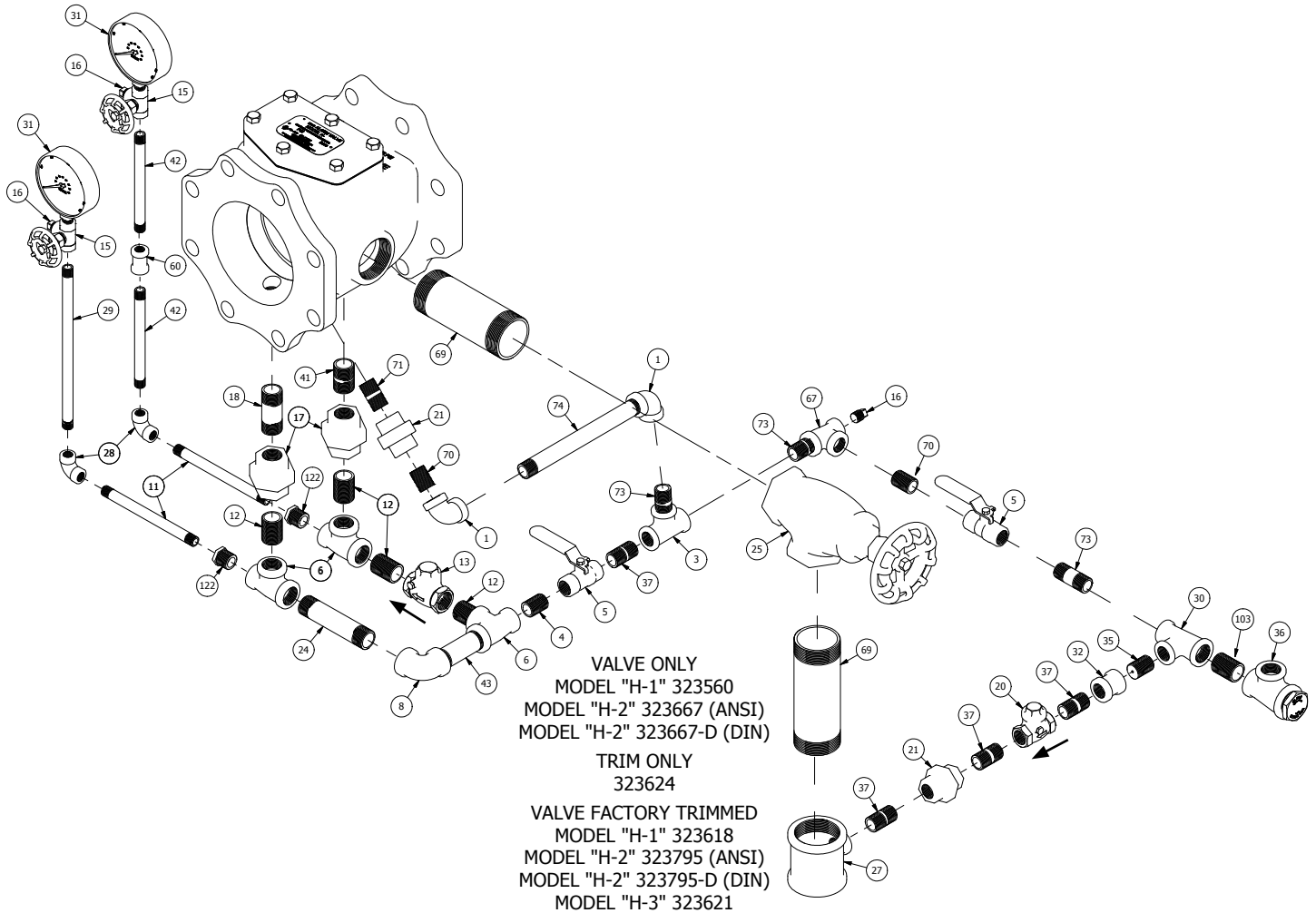
**300psi (20bars) RATED**  
**6" MODEL "H-2" HORIZONTAL POSITION / VARIABLE PRESSURE TRIM**



Det. No.	Description	Part No.	Req'd.	Det. No.	Description	Part No.	Req'd.	Det. No.	Description	Part No.	Req'd.
1	1/2" Elbow	311203	4	20	1/2" Swing Check Valve	311639	1	59	Retard Chamber	323350	1
3	1/2" Tee	311303	1	21	1/2" Union	311403	2	60	1/4" Coupling	311402	1
4	1/2" Close Nipple	310300	2	24	3/4" x 4 1/2" Nipple	310406	1	67	1/2" x 1/4" x 1/2" Tee	311305	1
5	1/2" Ball Valve	311692	2	25	2" Angle Valve	311617	1	68	2" x 7 1/2" Nipple	310809	1
6	3/4" x 1/2" x 3/4" Tee	311313	3	27	2" x 2" x 1/2" Tee	311380	1	69	2" x 6" Nipple	310808	1
8	3/4" Elbow	311204	1	28	1/4" Elbow	311201	2	70	1/2" Close Galv. Nipple	310300-G	3
11	1/4" x 6 1/2" Nipple	310115	2	29	1/4" x 10" Nipple	310136	1	71	1/2" x 1 1/2" Galv. Nipple	310301-G	1
12	3/4" Close Nipple	310400	4	31	3 1/2" Water Gauge (0-300psi)	300119	2	72	1/2" x 2 1/2" Galv. Nipple	310303-G	1
13	3/4" Swing Check Valve	311640	1	37	1/2" x 1 1/2" Nipple	310301	1	73	1/2" x 2" Galv. Nipple	310302-G	1
15	1/4" 3-Way Valve	311683	2	39	1/2" x 2 1/2" Nipple	310303	3	74	1/2" x 8 1/2" Galv. Nipple	310316-G	1
16	1/4" Plug	311001	3	41	3/4" x 1 1/2" Nipple	310413	1	75	1/2" x 12" Galv. Nipple	310318-G	1
17	3/4" Union	311404	1	42	1/4" x 6" Nipple	310110	2	122	1/2" x 1/4" Reducing Bushing	311100	2
18	3/4" x 2 1/2" Nipple	310402	1	43	3/4" x 3 1/2" Nipple	310404	1	160	ø.500 Restricted Orifice Union	311411	1

# GLOBE ALARM CHECK VALVE INSTALLATION AND MAINTENANCE GUIDE

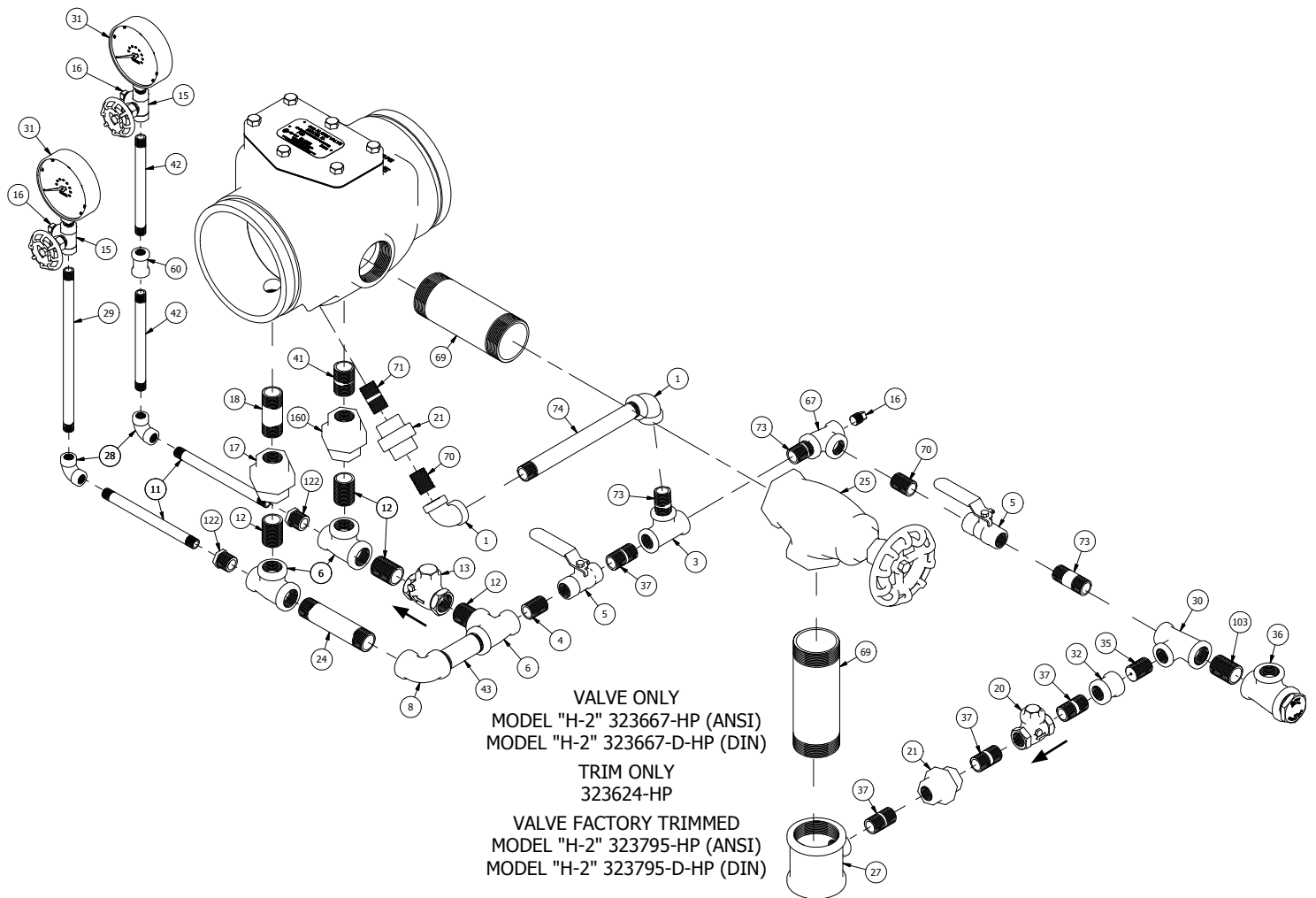
**175psi (12bars) RATED**  
**6" MODEL "H" SERIES HORIZONTAL POSITION / CONSTANT PRESSURE TRIM**



Det. No.	Description	Part No.	Req'd.	Det. No.	Description	Part No.	Req'd.	Det. No.	Description	Part No.	Req'd.
1	1/2" Elbow	311203	2	20	1/2" Swing Check Valve	311639	1	41	3/4" x 1 1/2" Nipple	310413	1
3	1/2" Tee	311303	1	21	1/2" Union	311403	2	42	1/4" x 6" Nipple	310110	2
4	1/2" Close Nipple	310300	1	24	3/4" x 4 1/2" Nipple	310406	1	43	3/4" x 3 1/2" Nipple	310404	1
5	1/2" Ball Valve	311692	2	25	2" Angle Valve	311617	1	60	1/4" Coupling	311402	1
6	3/4" x 1/2" x 3/4" Tee	311313	3	27	2" x 2" x 1/2" Tee	311380	1	67	1/2" x 1/4" x 1/2" Tee	311305	1
8	3/4" Elbow	311204	1	28	1/4" Elbow	311201	2	69	2" x 6" Nipple	310808	2
11	1/4" x 6 1/2" Nipple	310115	2	29	1/4" x 10" Nipple	310136	1	70	1/2" Close Galv. Nipple	310300-G	2
12	3/4" Close Nipple	310400	4	30	3/4" x 1/2" x 1/2" Tee	311318	1	71	1/2" x 1 1/2" Galv. Nipple	310301-G	1
13	3/4" Swing Check Valve	311640	1	31	3 1/2" Water Gauge (0-300psi)	300119	2	73	1/2" x 2" Galv. Nipple	310302-G	3
15	1/4" 3-Way Valve	311683	2	32	1/2" Coupling	311423	1	74	1/2" x 8 1/2" Galv. Nipple	310316-G	1
16	1/4" Plug	311001	3	35	Alarm Line Bleeder	320506	1	103	3/4" Close Galv. Nipple	310400-G	1
17	3/4" Union	311404	2	36	3/4" Strainer	325535	1	122	1/2" x 1/4" Reducing Bushing	311100	2
18	3/4" x 2 1/2" Nipple	310402	1	37	1/2" x 1 1/2" Nipple	310301	4				

# GLOBE ALARM CHECK VALVE INSTALLATION AND MAINTENANCE GUIDE

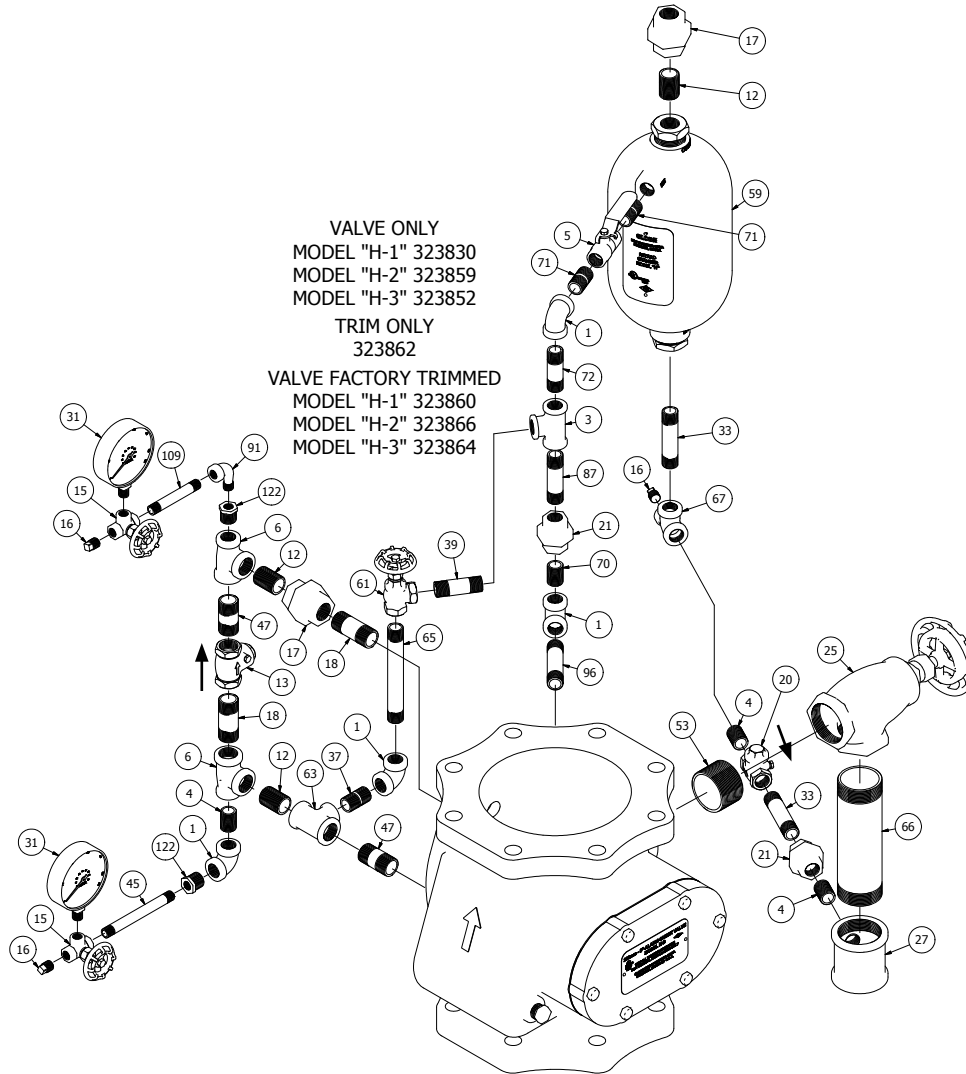
300psi (20bars) RATED  
6" MODEL "H-2" HORIZONTAL POSITION / CONSTANT PRESSURE TRIM



Det. No.	Description	Part No.	Req'd.	Det. No.	Description	Part No.	Req'd.	Det. No.	Description	Part No.	Req'd.
1	1/2" Elbow	311203	2	20	1/2" Swing Check Valve	311639	1	41	3/4" x 1 1/2" Nipple	310413	1
3	1/2" Tee	311303	1	21	1/2" Union	311403	2	42	1/4" x 6" Nipple	310110	2
4	1/2" Close Nipple	310300	1	24	3/4" x 4 1/2" Nipple	310406	1	43	3/4" x 3 1/2" Nipple	310404	1
5	1/2" Ball Valve	311692	2	25	2" Angle Valve	311617	1	60	1/4" Coupling	311402	1
6	3/4" x 1/2" x 3/4" Tee	311313	3	27	2" x 2" x 1/2" Tee	311380	1	67	1/2" x 1/4" x 1/2" Tee	311305	1
8	3/4" Elbow	311204	1	28	1/4" Elbow	311201	2	69	2" x 6" Nipple	310808	2
11	1/4" x 6 1/2" Nipple	310115	2	29	1/4" x 10" Nipple	310136	1	70	1/2" Close Galv. Nipple	310300-G	2
12	3/4" Close Nipple	310400	4	30	3/4" x 1/2" x 1/2" Tee	311318	1	71	1/2" x 1 1/2" Galv. Nipple	310301-G	1
13	3/4" Swing Check Valve	311640	1	31	3 1/2" Water Gauge (0-300psi)	300119	2	73	1/2" x 2" Galv. Nipple	310302-G	3
15	1/4" 3-Way Valve	311683	2	32	1/2" Coupling	311423	1	74	1/2" x 8 1/2" Galv. Nipple	310316-G	1
16	1/4" Plug	311001	3	35	Alarm Line Bleeder	320506	1	103	3/4" Close Galv. Nipple	310400-G	1
17	3/4" Union	311404	1	36	3/4" Strainer	325535	1	122	1/2" x 1/4" Reducing Bushing	311100	2
18	3/4" x 2 1/2" Nipple	310402	1	37	1/2" x 1 1/2" Nipple	310301	4	160	ø.500 Restricted Orifice Union	311411	1

# GLOBE ALARM CHECK VALVE INSTALLATION AND MAINTENANCE GUIDE

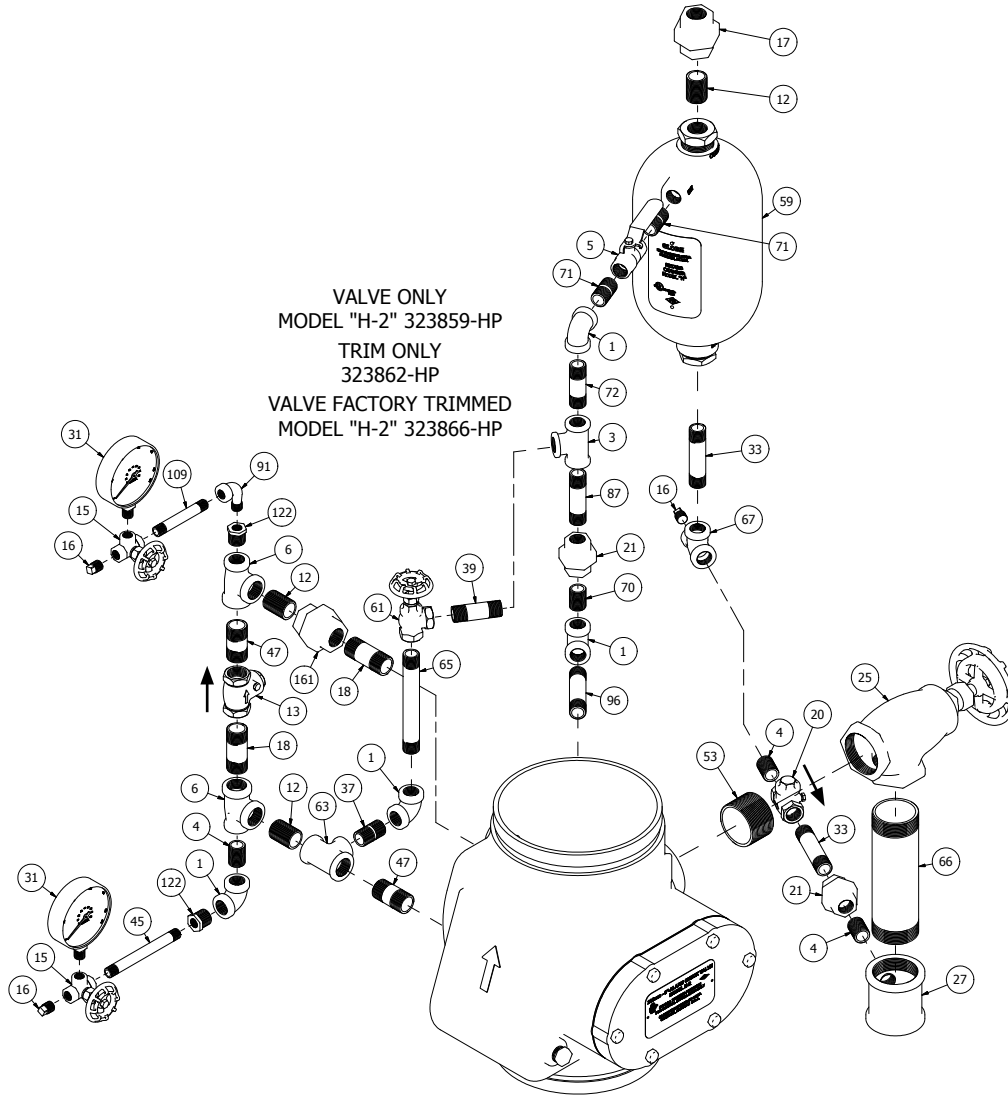
175psi (12bars) RATED  
8" MODEL "H" SERIES VERTICAL POSITION / VARIABLE PRESSURE TRIM



Det. No.	Description	Part No.	Req'd.	Det. No.	Description	Part No.	Req'd.	Det. No.	Description	Part No.	Req'd.
1	1/2" Elbow	311203	4	21	1/2" Union	311403	2	63	3/4" x 3/4" x 1/2" Tee	311317	1
3	1/2" Tee	311303	1	25	2" Angle Valve	311617	1	65	1/2" x 6" Nipple	310310	1
4	1/2" Close Nipple	310300	3	27	2" x 2" x 1/2" Tee	311380	1	66	2" x 7 1/2" Nipple	310809	1
5	1/2" Ball Valve	311692	1	31	3 1/2" Water Gauge (0-300psi)	300119	2	67	1/2" x 1/4" x 1/2" Tee	311305	1
6	3/4" x 1/2" x 3/4" Tee	311313	2	33	1/2" x 3 1/2" Nipple	310305	2	70	1/2" Close Galv. Nipple	310300-G	1
12	3/4" Close Nipple	310400	3	37	1/2" x 1 1/2" Nipple	310301	1	71	1/2" x 1 1/2" Galv. Nipple	310301-G	2
13	3/4" Swing Check Valve	311640	1	39	1/2" x 2 1/2" Nipple	310303	1	72	1/2" x 2 1/2" Galv. Nipple	310303-G	1
15	1/4" 3-Way Valve	311683	2	45	1/4" x 5" Nipple	310108	1	87	1/2" x 3" Galv. Nipple	310304-G	1
16	1/4" Plug	311001	3	47	3/4" x 2" Nipple	310401	2	91	1/4" Street Elbow	311211	1
17	3/4" Union	311404	2	53	2" Close Nipple	310800	1	96	1/2" x 3 1/2" Galv. Nipple	310305-G	1
18	3/4" x 2 1/2" Nipple	310402	2	59	Retard Chamber	323350	1	109	1/4" x 3 1/2" Nipple	310105	1
20	1/2" Swing Check Valve	311639	1	61	1/2" Angle Valve	311612	1	122	1/2" x 1/4" Reducing Bushing	311100	2

# GLOBE ALARM CHECK VALVE INSTALLATION AND MAINTENANCE GUIDE

**300psi (20bars) RATED**  
**8" MODEL "H-2" VERTICAL POSITION / VARIABLE PRESSURE TRIM**

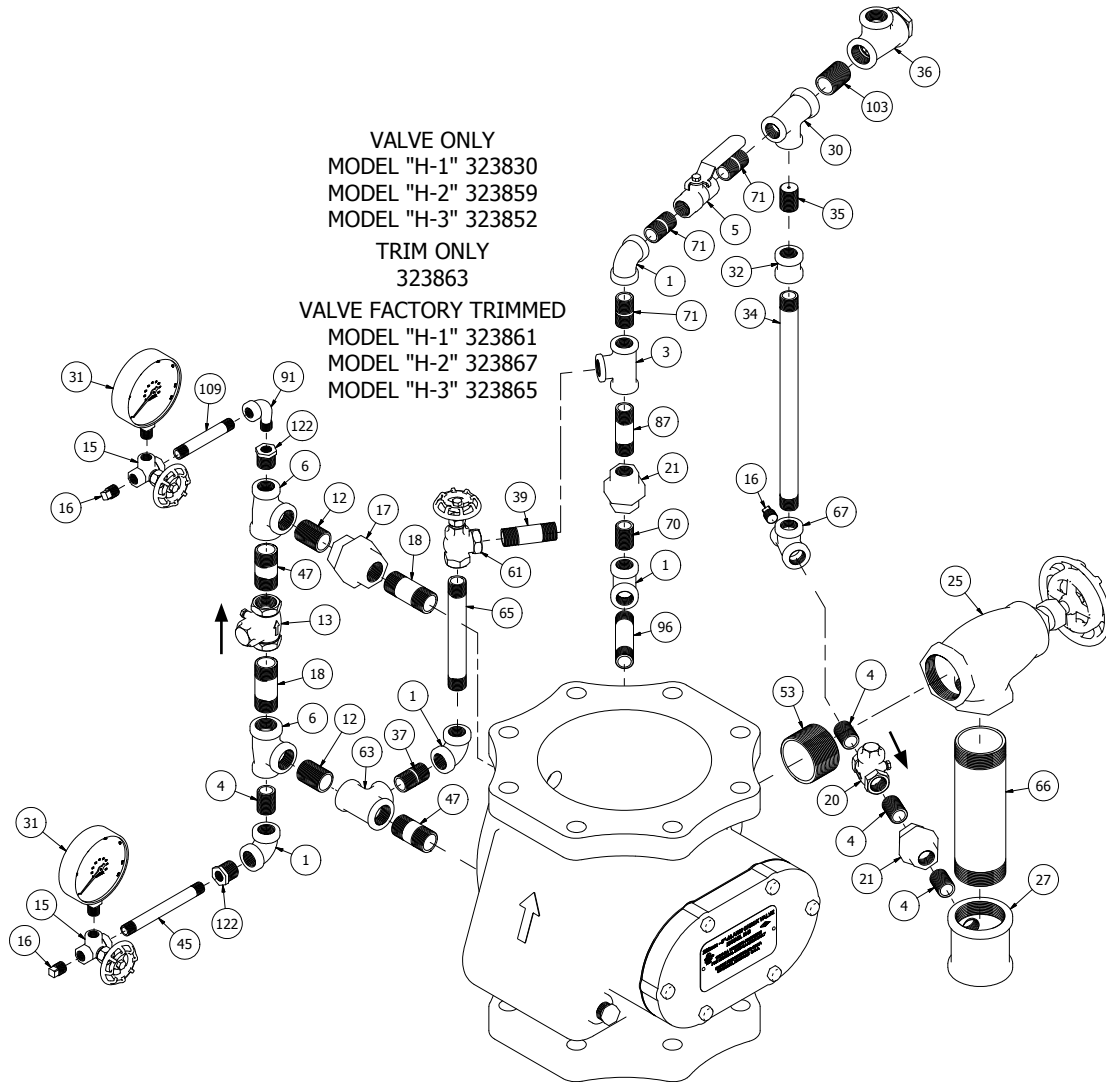


Det. No.	Description	Part No.	Req'd.	Det. No.	Description	Part No.	Req'd.	Det. No.	Description	Part No.	Req'd.
1	1/2" Elbow	311203	4	21	1/2" Union	311403	2	63	3/4" x 3/4" x 1/2" Tee	311317	1
3	1/2" Tee	311303	1	25	2" Angle Valve	311617	1	65	1/2" x 6" Nipple	310310	1
4	1/2" Close Nipple	310300	3	27	2" x 2" x 1/2" Tee	311380	1	66	2" x 7 1/2" Nipple	310809	1
5	1/2" Ball Valve	311692	1	31	3 1/2" Water Gauge (0-300psi)	300119	2	67	1/2" x 1/4" x 1/2" Tee	311305	1
6	3/4" x 1/2" x 3/4" Tee	311313	2	33	1/2" x 3 1/2" Nipple	310305	2	70	1/2" Close Galv. Nipple	310300-G	1
12	3/4" Close Nipple	310400	3	37	1/2" x 1 1/2" Nipple	310301	1	71	1/2" x 1 1/2" Galv. Nipple	310301-G	2
13	3/4" Swing Check Valve	311640	1	39	1/2" x 2 1/2" Nipple	310303	1	72	1/2" x 2 1/2" Galv. Nipple	310303-G	1
15	1/4" 3-Way Valve	311683	2	45	1/4" x 5" Nipple	310108	1	87	1/2" x 3" Galv. Nipple	310304-G	1
16	1/4" Plug	311001	3	47	3/4" x 2" Nipple	310401	2	91	1/4" Street Elbow	311211	1
17	3/4" Union	311404	1	53	2" Close Nipple	310800	1	96	1/2" x 3 1/2" Galv. Nipple	310305-G	1
18	3/4" x 2 1/2" Nipple	310402	2	59	Retard Chamber	323350	1	109	1/4" x 3 1/2" Nipple	310105	1
20	1/2" Swing Check Valve	311639	1	61	1/2" Angle Valve	311612	1	122	1/2" x 1/4" Reducing Bushing	311100	2
								161	ø.562 Restricted Orifice Union	311412	1

# GLOBE ALARM CHECK VALVE INSTALLATION AND MAINTENANCE GUIDE

175psi (12bars) RATED

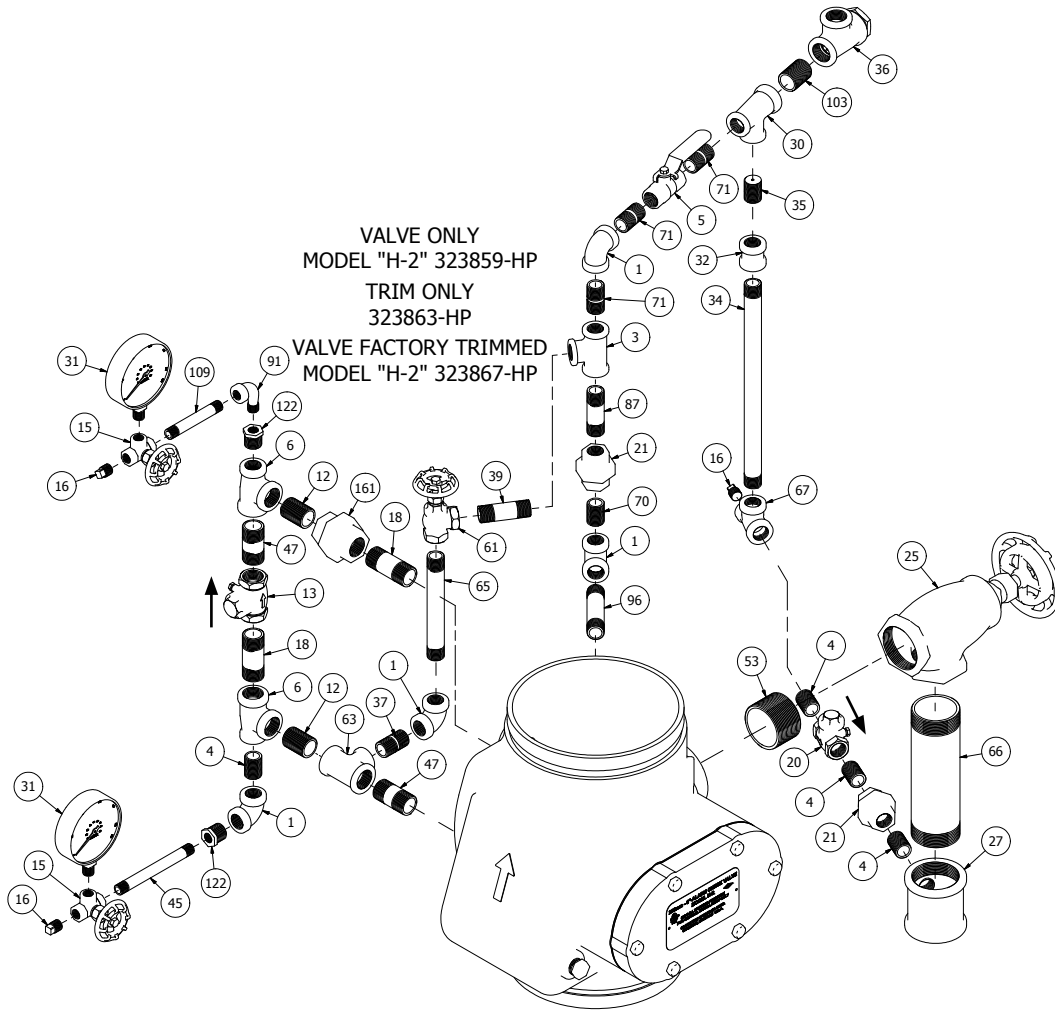
8" MODEL "H" SERIES VERTICAL POSITION / CONSTANT PRESSURE TRIM



Det. No.	Description	Part No.	Req'd.	Det. No.	Description	Part No.	Req'd.	Det. No.	Description	Part No.	Req'd.
1	1/2" Elbow	311203	4	25	2" Angle Valve	311617	1	61	1/2" Angle Valve	311612	1
3	1/2" Tee	311303	1	27	2" x 2" x 1/2" Tee	311380	1	63	3/4" x 3/4" x 1/2" Tee	311317	1
4	1/2" Close Nipple	310300	4	30	3/4" x 1/2" x 1/2" Tee	311318	1	65	1/2" x 6" Nipple	310310	1
5	1/2" Ball Valve	311692	1	31	3 1/2" Water Gauge (0-300psi)	300119	2	66	2" x 7 1/2" Nipple	310809	1
6	3/4" x 1/2" x 3/4" Tee	311313	2	32	1/2" Coupling	311423	1	67	1/2" x 1/4" x 1/2" Tee	311305	1
12	3/4" Close Nipple	310400	2	34	1/2" x 12" Nipple	310318	1	70	1/2" Close Galv. Nipple	310300-G	1
13	3/4" Swing Check Valve	311640	1	35	Alarm Line Bleeder	320506	1	71	1/2" x 1 1/2" Galv. Nipple	310301-G	3
15	1/4" 3-Way Valve	311683	2	36	3/4" Strainer	325535	1	87	1/2" x 3" Galv. Nipple	310303-G	1
16	1/4" Plug	311001	3	37	1/2" x 1 1/2" Nipple	310301	1	91	1/4" Street Elbow	311211	1
17	3/4" Union	311404	1	39	1/2" x 2 1/2" Nipple	310303	1	96	1/2" x 3 1/2" Galv. Nipple	310305-G	1
18	3/4" x 2 1/2" Nipple	310402	2	45	1/4" x 5" Nipple	310108	1	103	3/4" Close Galv. Nipple	310400-G	1
20	1/2" Swing Check Valve	311639	1	47	3/4" x 2" Nipple	310401	2	109	1/4" x 3 1/2" Nipple	310105	1
21	1/2" Union	311403	2	53	2" Close Nipple	310800	1	122	1/2" x 1/4" Reducing Bushing	311100	2

# GLOBE ALARM CHECK VALVE INSTALLATION AND MAINTENANCE GUIDE

**300psi (20bars) RATED**  
**8" MODEL "H-2" VERTICAL POSITION / CONSTANT PRESSURE TRIM**

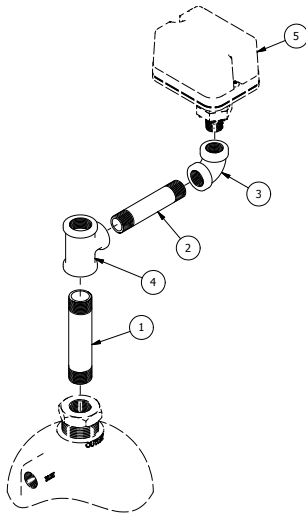


Det. No.	Description	Part No.	Req'd.	Det. No.	Description	Part No.	Req'd.	Det. No.	Description	Part No.	Req'd.
1	1/2" Elbow	311203	4	27	2" x 2" x 1/2" Tee	311380	1	63	3/4" x 3/4" x 1/2" Tee	311317	1
3	1/2" Tee	311303	1	30	3/4" x 1/2" x 1/2" Tee	311318	1	65	1/2" x 6" Nipple	310310	1
4	1/2" Close Nipple	310300	4	31	3 1/2" Water Gauge (0-300psi)	300119	2	66	2" x 7 1/2" Nipple	310809	1
5	1/2" Ball Valve	311692	1	32	1/2" Coupling	311423	1	67	1/2" x 1/4" x 1/2" Tee	311305	1
6	3/4" x 1/2" x 3/4" Tee	311313	2	34	1/2" x 12" Nipple	310318	1	70	1/2" Close Galv. Nipple	310300-G	1
12	3/4" Close Nipple	310400	2	35	Alarm Line Bleeder	320506	1	71	1/2" x 1 1/2" Galv. Nipple	310301-G	3
13	3/4" Swing Check Valve	311640	1	36	3/4" Strainer	325535	1	87	1/2" x 3" Galv. Nipple	310303-G	1
15	1/4" 3-Way Valve	311683	2	37	1/2" x 1 1/2" Nipple	310301	1	91	1/4" Street Elbow	311211	1
16	1/4" Plug	311001	3	39	1/2" x 2 1/2" Nipple	310303	1	96	1/2" x 3 1/2" Galv. Nipple	310305-G	1
18	3/4" x 2 1/2" Nipple	310402	2	45	1/4" x 5" Nipple	310108	1	103	3/4" Close Galv. Nipple	310400-G	1
20	1/2" Swing Check Valve	311639	1	47	3/4" x 2" Nipple	310401	2	109	1/4" x 3 1/2" Nipple	310105	1
21	1/2" Union	311403	2	53	2" Close Nipple	310800	1	122	1/2" x 1/4" Reducing Bushing	311100	2
25	2" Angle Valve	311617	1	61	1/2" Angle Valve	311612	1	161	ø.562 Restricted Orifice Union	311412	1

# GLOBE ALARM CHECK VALVE INSTALLATION AND MAINTENANCE GUIDE

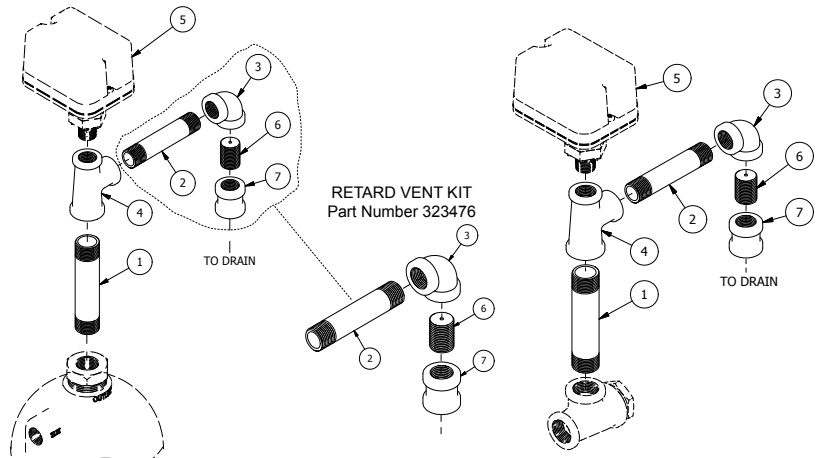
## OPTIONAL ALARM PRESSURE SWITCH TRIM

FOR USE WHEN MECHANICAL SWITCH  
IS PROVIDED WITH MECHANICAL ALARM.



Part Number 323485 (Trim Only (Det. No. 1-4))			
Det. No.	Description	Part No.	Req'd.
1	3/4" x 4 1/2" Nipple	310406	1
2	1/2" x 4" Nipple	310306	1
3	1/2" Elbow	311203	1
4	3/4" x 3/4" x 1/2" Tee	311317	1
5	Pressure Switch* (Sold Separately)	301650	1

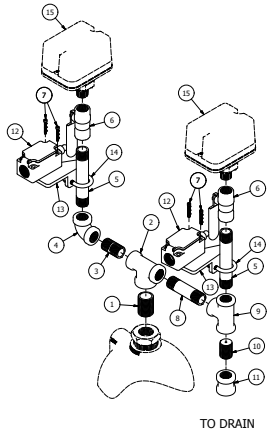
FOR USE WHEN SWITCH IS PROVIDED WITHOUT  
MECHANICAL ALARM, TO PREVENT AIR LOCKS.



Part Number 323478 (Trim Only (Det. No. 1-4, 6 & 7))			
Det. No.	Description	Part No.	Req'd.
1	3/4" x 4 1/2" Nipple	310406	1
2	1/2" x 4" Nipple	310306	1
3	1/2" Elbow	311203	1
4	3/4" x 1/2" x 1/2" Tee	311318	1
6	Alarm Line Bleeder	320506	1
7	1/2" Coupling	311423	1
5	Pressure Switch* (Sold Separately)	301650	1

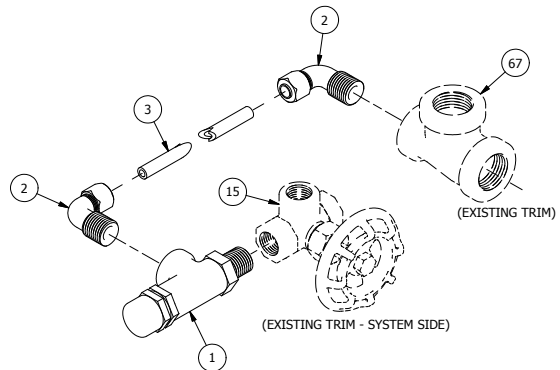
\*NOTE: Other pressure switches available upon request. May be substituted depending on application.

## OPTIONAL DOUBLE ALARM PRESSURE SWITCH TRIM



PART NUMBER 323470 (Trim (Det. No. 1-14 Only))			
Det. No.	Description	Part No.	Req'd.
1	3/4" Close Nipple	310400	1
2	1/2" x 1/2" x 3/4" Tee	311389	1
3	1/2" x 1 1/2" Nipple	310301	1
4	1/2" Elbow	311203	1
5	1/2" x 4 1/2" Nipple	310307	2
6	1/2" Ball Valve	311692	2
7	#8-32 x 1" SHCS	301677	4
8	1/2" x 3 1/2" Nipple	310305	1
9	1/2" Tee	311303	1
10	Alarm Line Bleeder	320506	1
11	1/2" Coupling	311423	1
12	Supervisory Switch	301678	2
13	Bracket	301675	2
14	U-Bolt	301676	2
15	Pressure Switch (Sold Separately)	301650	2

## OPTIONAL PRESSURE RELIEF VALVE TRIM



Part Number 323477 (Trim with Pressure Relief Valve)			
Det. No.	Description	Part No.	Req'd.
1	1/4" Pressure Relief Valve	323640	1
2	1/4"NPT Male x 1/4" Tube Elbow	320603	2
3	1/4" Copper Tubing	M-320604	2'