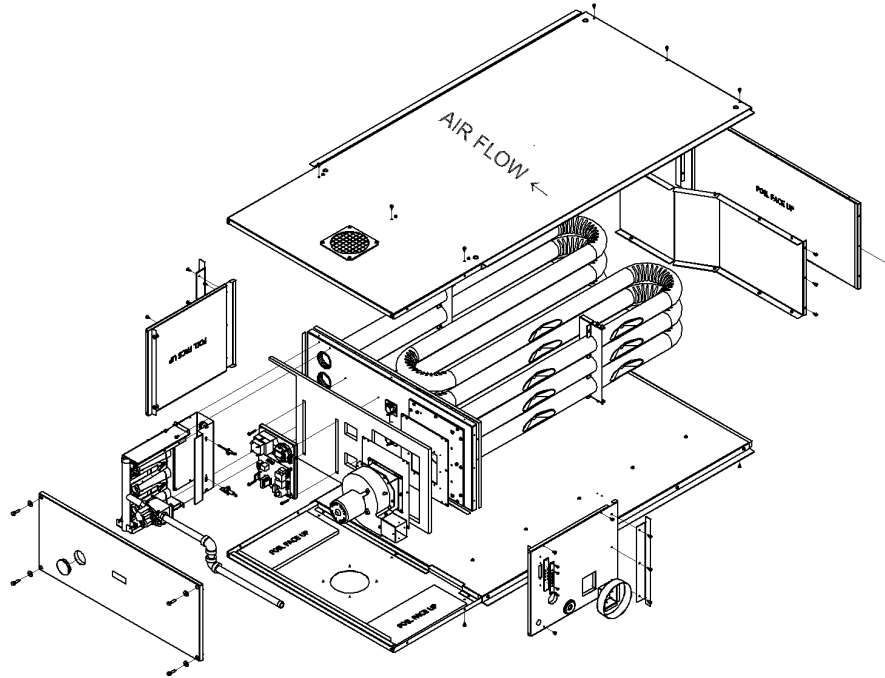


TABLE OF CONTENTS

75010452

REV
A



| | |
|------------|-----------------------------------|
| SECTION 01 | MODEL NUMBER DESCRIPTION |
| SECTION 02 | GENERAL ASSEMBLY |
| SECTION 03 | GAS CONTROL PARTS |
| SECTION 04 | CONVERSION KITS & TRANSFORMERS |
| SECTION 05 | FIELD & FACTORY INSTALLED OPTIONS |

Parts List Number :GUNEUP1

Model Number :GUNE040ATA20000

| Part No. | Reference No. | Quantity | Description |
|-----------------|----------------------|-----------------|-------------------------------------|
| 75010454 | SEC 01 | | MODEL NUMBER DESCRIPTION |
| 75010451 | SEC 02 | | GENERAL ASSEMBLY |
| GUNE1000 | SEC 03 | | GAS CONTROL PARTS |
| GUNE1001 | SEC 04 | | CONVERSION KITS & TRANSFORMERS |
| 75010453 | SEC 05 | | FIELD AND FACTORY INSTALLED OPTIONS |

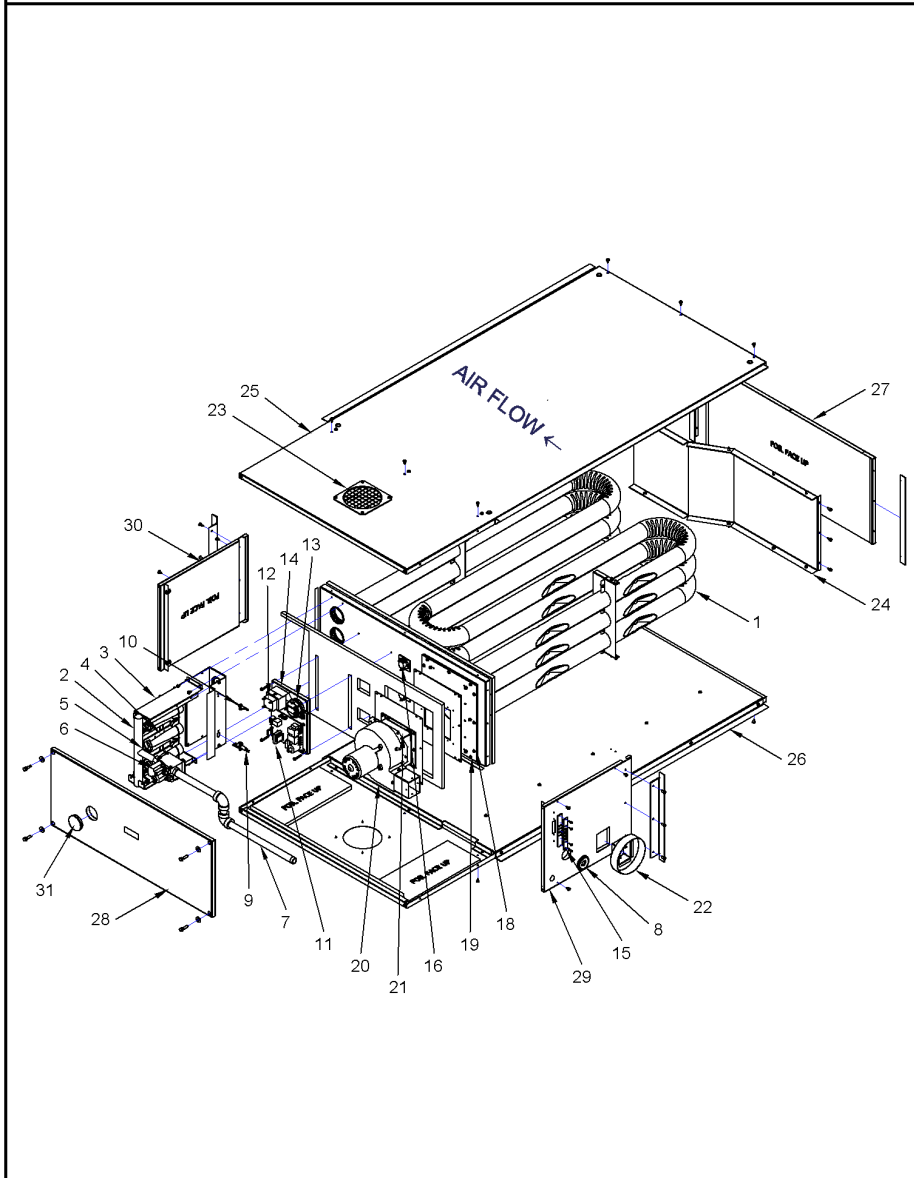
| MODEL NUMBER DESCRIPTION | | | | | | | | | | | | | | 75010454 | REV A | |
|---|----------|----------|----------|---------------|----------|----------|----------|---|----------|----------|----------|----------|----------|----------|----------|--|
| Tubular Duct Furnace | | | | | | | | | | | | | | | | |
| | <u>G</u> | <u>U</u> | <u>N</u> | <u>E</u> | <u>0</u> | <u>2</u> | <u>0</u> | <u>A</u> | <u>T</u> | <u>A</u> | <u>1</u> | <u>0</u> | <u>0</u> | <u>0</u> | <u>J</u> | |
| DIGIT | 1 | 2 | 3 | 4 | 5 | 6 | 7 | 8 | 9 | 10 | 11 | 12 | 13 | 14 | 15 | |
| Digit 1 - Gas Heating Equipment | | | | | | | | Digit 11 - Heat Exchanger Material | | | | | | | | |
| G = Gas Heating | | | | | | | | 1 = Standard Aluminized Steel | | | | | | | | |
| Digit 2 - Unit Type | | | | | | | | 2 = #409 Stainless Steel | | | | | | | | |
| U = Tubular | | | | | | | | S = Special | | | | | | | | |
| S = Special | | | | | | | | Digit 12 - Rooftop Arrangements | | | | | | | | |
| Digit 3 - Fuel Type | | | | | | | | 0 = None (Indoor Unit) | | | | | | | | |
| N = Natural Gas | | | | | | | | S = Special | | | | | | | | |
| P = LP Gas (Propane) | | | | | | | | Digit 13 - Rooftop Heating Unit | | | | | | | | |
| S = Special | | | | | | | | 0 = None (Indoor Unit) | | | | | | | | |
| Digit 4 - Development Sequence | | | | | | | | S = Special | | | | | | | | |
| E = Fifth Generation | | | | | | | | Motor Selection | | | | | | | | |
| Digit 5,6 & 7 - Input Capacity | | | | | | | | Digit 14 - Rooftop Fan Section | | | | | | | | |
| 010 = 100 MBh | | | | 030 = 300 MBh | | | | 0 = None (Indoor Unit) | | | | | | | | |
| 015 = 150 MBh | | | | 035 = 350 MBh | | | | S = Special | | | | | | | | |
| 020 = 200 MBh | | | | 040 = 400 MBh | | | | Digit 15 - Miscellaneous Options | | | | | | | | |
| 025 = 250 MBh | | | | | | | | All Units | | | | | | | | |
| Digit 8 - Main Power Supply | | | | | | | | 0 = None | | | | | | | | |
| A = 115/60/1 | | | | E = 460/60/3 | | | | B = Orifices for Elevation Above 5000 Feet | | | | | | | | |
| B = 230/60/1 | | | | F = 575/60/3 | | | | A = Single Stage Room Thermostat | | | | | | | | |
| C = 208/60/3 | | | | G = 208/60/1 | | | | B = 1 Stage room W/summer/winter T834 | | | | | | | | |
| D = 230/60/3 | | | | S = Special | | | | D = Single Stage Duct thermostat | | | | | | | | |
| Digit 9 - Gas Control Option | | | | | | | | E = 2 Stage Room Thermostat TH522 | | | | | | | | |
| H = Electronic Mod. W/Room Sensing | | | | | | | | F = Two Stage Duct Thermostat | | | | | | | | |
| J = Electronic Mod. W/Duct Sensing | | | | | | | | H = 2 Stage Room Thermostat TH522 W/Guard | | | | | | | | |
| L = Electronic Modulating With Ext. 4-20mA Input | | | | | | | | J = Single Stage Room thermostat W/Guard | | | | | | | | |
| N = Electronic Modulating With Ext. 0-10VDC Input | | | | | | | | K = Single Stage Line Voltage T6169C T-Stat | | | | | | | | |
| T = Single Stage, Direct Spark Ignition | | | | | | | | L = Single Stage, 24 Volt, T822K T'Stat | | | | | | | | |
| V = Two Stage, Direct spark Ignition | | | | | | | | D = With Summer-Winter Switch | | | | | | | | |
| W = Electronic Modulation W/Duct Sensing & Room Override Stat | | | | | | | | G = Horizontal and Vertical Louvers | | | | | | | | |
| S = Special | | | | | | | | T = 3/4" NPT High Gas Pressure Regulator | | | | | | | | |
| Digit 10 - Design Sequence | | | | | | | | W = 409 Stainless Steel Drain Pan | | | | | | | | |
| A = Forth Generation | | | | | | | | X = Universal Guard for Room T'Stat | | | | | | | | |
| | | | | | | | | 5 = 5" Vent Cap | | | | | | | | |
| | | | | | | | | 6 = 6" Vent Cap | | | | | | | | |
| | | | | | | | | S = Special | | | | | | | | |

GENERAL ASSEMBLY

75010451

REV
B

TYPICAL ILLUSTRATION



| Part No. | Reference No. | Quantity | Description |
|----------|---------------|----------|--|
| CAB01185 | * | 1 | CABLE; IGNITION-36 IN. LONG |
| CON01299 | * | 1 | CONNECTOR; MOLEX ASSY(LEADS 19 IN LONG) |
| GKT04710 | * | 1 | NO DESCRIPTION AVAILABLE |
| TUB13659 | * | 1 | NO DESCRIPTION AVAILABLE |
| EXC02572 | 1 | 1 | EXCHANGER; VESTIBULE PANEL/TUBE ASSY (HEAT EXCHANGER & FLUE COLLECTOR) |
| BRK04449 | 2 | 1 | BRACKET; MANIFOLD, SUB-ASSY |
| MFD01375 | 3 | 1 | MANIFOLD; |
| BNR01230 | 4 | 8 | BURNER; INSHOT |
| ORF01751 | 5 | 8 | ORIFICE; STANDARD |
| VAL08916 | 6 | 1 | VALVE; SINGLE STAGE NATURAL(NG) |
| PIP01724 | 7 | 1 | PIPE; ASSEMBLY, GAS INLET |
| GRM01038 | 8 | 1 | GROMMET; GAS INLET |
| SEN02145 | 9 | 1 | SENSOR; FLAME SENSOR, DS, 1.500" |
| CNT05013 | 10 | 1 | CONTROL; SPARK IGNITOR |
| BRD03396 | 11 | 1 | BOARD; CONTROL |
| TRR01251 | 12 | 1 | TRANSFORMER; 50VA, 120V PRI., 24V SEC |
| SWT03704 | 13 | 1 | SWITCH; PRESSURE SWITCH 1.10" PINK |
| SWT03838 | 13 | 1 | SWITCH; AIR PRESSURE STD ALT (0-4999 FT) |
| CNT07193 | 14 | 1 | CONTROL; SUB-PANEL |
| PLT05204 | 15 | 1 | PLATE; TERMINAL BLOCK |
| SWT03839 | 16 | 2 | SWITCH; HIGH LIMIT |
| GKT04707 | 18 | 1 | GASKET; FLUE COLLECTOR |
| PNL31023 | 19 | 1 | PANEL; FLUE COLLECTOR COVER |
| BLW01342 | 20 | 1 | BLOWER; POWER VENTER (DRAFTER) ASSY |
| PNL31003 | 21 | 1 | PANEL; POWER VENT EXTENSION/STAND-OFF |
| ADP01367 | 22 | 1 | ADAPTER; FLUE COLLAR ASSEMBLY |
| SRN00993 | 23 | 1 | SCREEN; AIR INLET |
| BAF01411 | 24 | 1 | BAFFLE; |
| PNL31004 | 25 | 1 | PANEL; TOP JACKET W/ INSULATION |
| PNL31005 | 26 | 1 | PANEL; BOTTOM JACKET W/ INSULATION |
| PNL31024 | 27 | 1 | PANEL; RIGHT SIDE JACKET W/ INSULATION |
| PNL31025 | 28 | 1 | PANEL; LEFT SIDE/ACCESS |
| PNL31026 | 29 | 1 | PANEL; REAR |
| PNL31027 | 30 | 1 | PANEL; FRONT |
| GLS01083 | 31 | 1 | GLASS; PEEP HOLE SIGHT |

| Part No. | Reference No. | Quantity | Description |
|-----------------|----------------------|-----------------|--|
| TRR02276 | * | 1 | TRANSFORMER; 4000-01E07 |
| VAL02178 | * | 1 | VALVE; MODULATING & REGULATING (NOT THE GAS VALVE)MAIXTROL SYSTEM MR VALVE 610 3/4 IN NG |

| Part No. | Reference No. | Quantity | Description |
|-----------------|----------------------|-----------------|---|
| KIT16810 | * | 1 | KIT; CONVERTING FROM NAT. GAS TO LP GAS |
| KIT16811 | * | 1 | KIT; CONVERTING FROM LP GAS TO NAT. GAS |
| TRR00923 | * | 1 | TRANSFORMER; 500VA, 240-480/120-240V |
| TRR00924 | * | 1 | TRANSFORMER; 500VA, 600/120-240V |
| TRR01505 | * | 1 | TRANSFORMER; 50VA, 120V PRI., 24V SEC., FOOT MOUNTED, CLASS 2 |
| TRR01740 | * | 1 | TRANSFORMER; 230-24V, 50VA, 2A |
| TRR01840 | * | 1 | TRANSFORMER; 208/115, 500VA (STEP DOWN) |

MODEL "TD"

75010453

REV
A

REPLACEMENT PARTS

"TD" FIELD INSTALLED OPTIONS AND THERMOSTATS

| Balloon #: | DESCRIPTION | Rule: | Mne #: |
|------------|--|-----------------------------|----------|
| 1 | PRESSURE REGULATOR (0.5 to 10 PSI) NATURAL GAS [A7] | | REG00599 |
| 2 | PRESSURE REGULATOR (10 to 20 PSI) NATURAL GAS [A7] | | REG00600 |
| 3 | PRESSURE REGULATOR (20 to 35 PSI) NATURAL GAS [A7] | | REG00601 |
| 4 | T87K 1-STAGE THERMOSTAT, WITH SUBBASE [G1] * | | THT03087 |
| 5 | T834N 1-STAGE W/ FAN SWITCH THERMOSTAT (STERLING LOGO) [G3] * | | THT03088 |
| 6 | TH5220D 2-STAGE THERMOSTAT, WITH SUBBASE [G5] * | | THT02244 |
| 7 | T6169C 1-STAGE LINE VOLTAGE (115V) THERMOSTAT, WITH SUBBASE [G8] | | THT02339 |
| 8 | T822K 1-STAGE THERMOSTAT [G9] * | | THT03089 |
| 9 | TG511A UNIVERSAL THERMOSTAT GUARD/LOCKING COVER [G6] | | GRD00334 |
| 10 | 24V SPST RELAY | | RLY00871 |
| 11 | LOW AMBIENT CONTROL | | CNT07136 |
| 12 | VENT CAP 5" (100-200) [M2-2] | 5-7=010,015,020;15-30=5 | CAP00549 |
| 13 | VENT CAP 6" (250-400) [M2-3] | 5-7=025,030,035,040;15-30=6 | CAP00550 |
| 14 | HORIZONTAL AND VERTICAL LOUVER KIT (Size 100) | 5-7=010;15-30=G | KIT16796 |
| 15 | HORIZONTAL AND VERTICAL LOUVER KIT (Size 150) | 5-7=015;15-30=G | KIT16797 |
| 16 | HORIZONTAL AND VERTICAL LOUVER KIT (Size 200) | 5-7=020;15-30=G | KIT16798 |
| 17 | HORIZONTAL AND VERTICAL LOUVER KIT (Size 250) | 5-7=025;15-30=G | KIT16799 |
| 18 | HORIZONTAL AND VERTICAL LOUVER KIT (Size 300) | 5-7=030;15-30=G | KIT16800 |
| 19 | HORIZONTAL AND VERTICAL LOUVER KIT (Size 350) | 5-7=035;15-30=G | KIT16801 |
| 20 | HORIZONTAL AND VERTICAL LOUVER KIT (Size 400) | 5-7=040;15-30=G | KIT16802 |
| 21 | HORIZONTAL COMBUSTION AIR INLET KIT, 5 INCH (TD 100-200) | 5-7=010,015,020 | KIT16803 |
| 22 | HORIZONTAL COMBUSTION AIR INLET KIT, 6 INCH (TD 250-400) | 5-7=025,030,035,040 | KIT16804 |
| 23 | VERTICAL COMBUSTION AIR INLET KIT, 5 INCH (TD 100-200) | 5-7=010,015,020 | KIT16805 |
| 24 | VERTICAL COMBUSTION AIR INLET KIT, 6 INCH (TD 250-400) | 5-7=025,030,035,040 | KIT16806 |
| 25 | AIR INLET KIT, 5 INCH (TD 100-200) | 5-7=010,015,020 | KIT16807 |
| 26 | AIR INLET KIT, 6 INCH (TD 250-400) | 5-7=025,030,035,040 | KIT16808 |
| 27 | STAINLESS STEEL DRIP PAN | | PAN03794 |
| 28 | TOUCH UP PAINT, 12oz. SPRAY CAN (DARK GRAY) | | PAI00087 |
| 29 | HIGH TEMP (RTV) SEALANT - 2.8oz. TUBE | | SEL01221 |

* Mercury Free

| Part No. | Reference No. | Quantity | Description |
|----------|---------------|----------|---|
| REG00599 | 1 | 1 | REGULATOR; PRESSURE, (0.5 TO 10 PSI) NATURAL GAS [A7-1/2-1] |
| REG00600 | 2 | 1 | REGULATOR; PRESSURE, (10 TO 20 PSI) NATURAL GAS [A7-3/8-1] |
| REG00601 | 3 | 1 | REGULATOR; PRESSURE, (20 TO 35 PSI) NATURAL GAS [A7-5/16-1] |
| THT03087 | 4 | 1 | T87K 1-STAGE THERMOSTAT, WITH SUBBASE [G1] * |
| THT03088 | 5 | 1 | T834N 1-STAGE W/ FAN SWITCH THERMOSTAT (STERLING LOGO) [G3] * |
| THT02244 | 6 | 1 | THERMOSTAT; TW0-STAGE ROOM |
| THT02339 | 7 | 1 | THERMOSTAT; LIGHT DUTY COMBINATION THERMOSTAT AND SUBBASE, |
| GRD00334 | 9 | 1 | GUARD; THERMOSTAT (LOCKING COVER) |
| RLY00871 | 10 | 1 | RELAY; SPST, 24 VAC COIL |
| CNT07136 | 11 | 1 | LOW AMBIENT CONTROL H5 |
| KIT16804 | 22 | 1 | KIT; HORIZONTAL COMBUSTION AIR INLET, 6 INCH (TD 250-400) |
| KIT16806 | 24 | 1 | KIT; VERTICAL COMBUSTION AIR INLET, 6 INCH (TD 250-400) |
| KIT16808 | 26 | 1 | KIT; AIR INLET, 6 INCH (TD 250-400) |
| PAI00087 | 28 | 1 | PAINT; AEROSOL, LT.GRAY (SHIPPING UOM 12 OZ HAZ) |
| SEL01221 | 29 | 1 | SEALANT; HIGH TEMP (RTV) - 2.8OZ. TUBE |