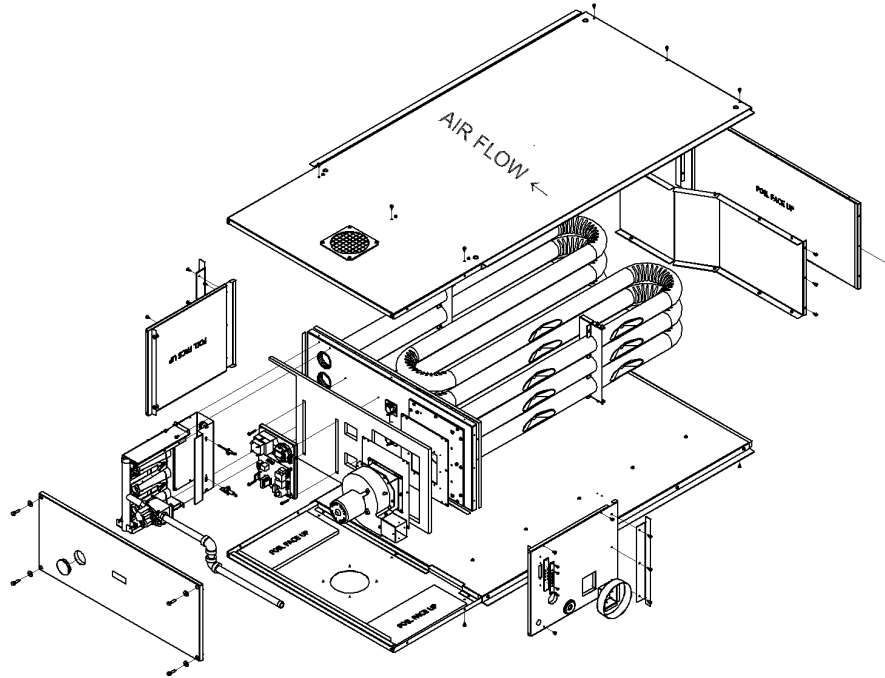


TABLE OF CONTENTS

75010452

REV
A



SECTION 01	MODEL NUMBER DESCRIPTION
SECTION 02	GENERAL ASSEMBLY
SECTION 03	GAS CONTROL PARTS
SECTION 04	CONVERSION KITS & TRANSFORMERS
SECTION 05	FIELD & FACTORY INSTALLED OPTIONS

Part No.	Reference No.	Quantity	Description
75010454	SEC 01		MODEL NUMBER DESCRIPTION
75010451	SEC 02		GENERAL ASSEMBLY
GUNE1000	SEC 03		GAS CONTROL PARTS
GUNE1001	SEC 04		CONVERSION KITS & TRANSFORMERS
75010453	SEC 05		FIELD AND FACTORY INSTALLED OPTIONS

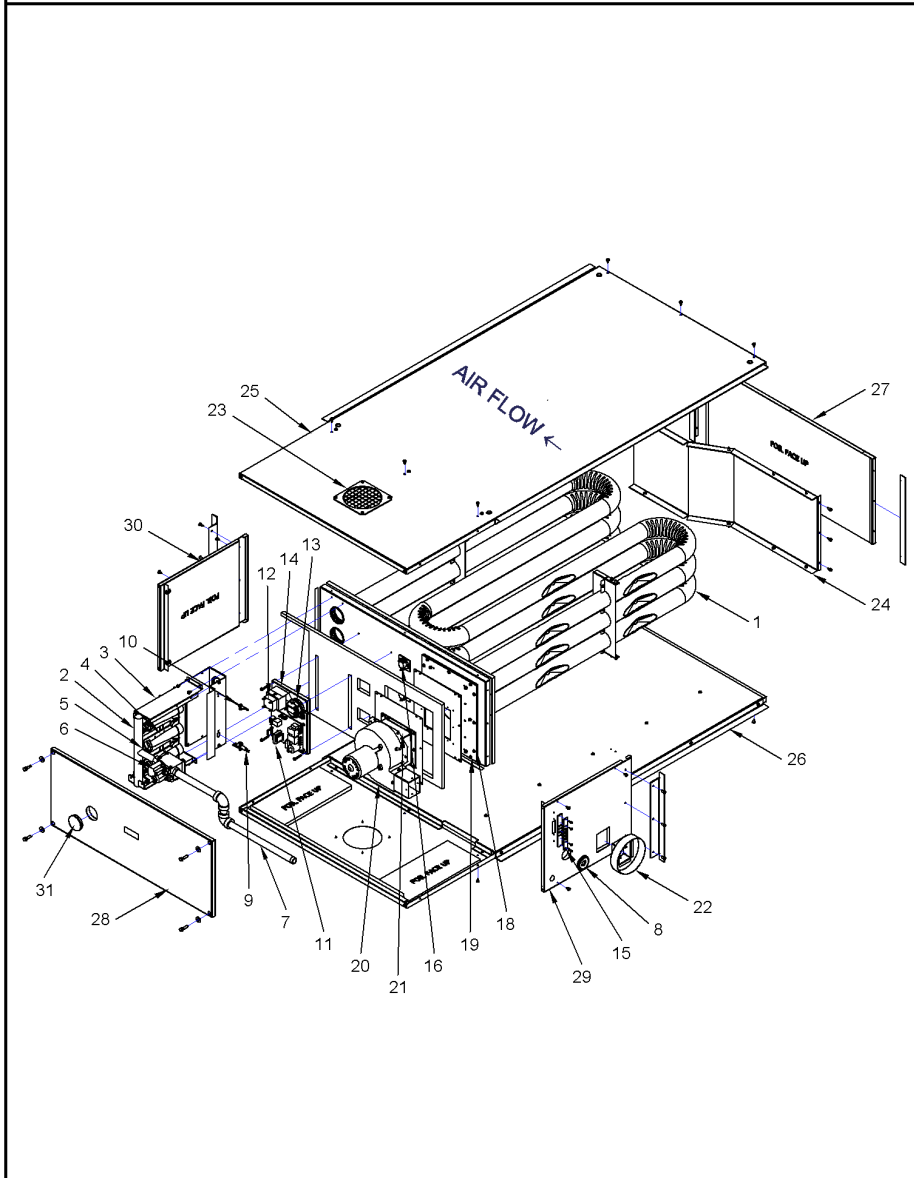
MODEL NUMBER DESCRIPTION		75010454	REV A													
Tubular Duct Furnace																
	<u>G</u>	<u>U</u>	<u>N</u>	<u>E</u>	<u>0</u>	<u>2</u>	<u>0</u>	<u>A</u>	<u>T</u>	<u>A</u>	<u>1</u>	<u>0</u>	<u>0</u>	<u>0</u>	<u>J</u>	
DIGIT	1	2	3	4	5	6	7	8	9	10	11	12	13	14	15	
Digit 1	- Gas Heating Equipment G = Gas Heating							Digit 11	- Heat Exchanger Material 1 = Standard Aluminized Steel 2 = #409 Stainless Steel S = Special							
Digit 2	- Unit Type U = Tubular S = Special							Digit 12	- Rooftop Arrangements 0 = None (Indoor Unit) S = Special							
Digit 3	- Fuel Type N = Natural Gas P = LP Gas (Propane) S = Special							Digit 13	- Rooftop Heating Unit 0 = Nont (Indoor Unit) S = Special							
Digit 4	- Development Sequence E = Fifth Generation								Motor Selection							
Digit 5,6 & 7	- Input Capacity 010 = 100 MBh 030 = 300 MBh 015 = 150 MBh 035 = 350 MBh 020 = 200 MBh 040 = 400 MBh 025 = 250 MBh							Digit 14	- Rooftop Fan Section 0 = None (Indoor Unit) S = Special							
Digit 8	- Main Power Supply A = 115/60/1 E = 460/60/3 B = 230/60/1 F = 575/60/3 C = 208/60/3 G = 208/60/1 D = 230/60/3 S = Special							Digit 15	- Miscellaneous Options All Units 0 = None B = Orifices for Elevation Above 5000 Feet A = Single Stage Room Thermostat B = 1 Stage room W/summer/winter T834 D = Single Stage Duct thermostat E = 2 Stage Room Thermostat TH522 F = Two Stage Duct Thermostat H = 2 Stage Room Thermostat TH522 W/Guard J = Single Stage Room thermostat W/Guard K = Single Stage Line Voltage T6169C T-Stat L = Single Stage, 24 Volt, T822K T'Stat D = With Summer-Winter Switch G = Horizontal and Vertical Louvers T = 3/4" NPT High Gas Pressure Regulator W = 409 Stainless Steel Drain Pan X = Universal Guard for Room T'Stat 5 = 5" Vent Cap 6 = 6" Vent Cap S = Special							
Digit 9	- Gas Control Option H = Electronic Mod. W/Room Sensing J = Electronic Mod. W/Duct Sensing L = Electronic Modulating With Ext. 4-20mA Input N = Electronic Modulating With Ext. 0-10VDC Input T = Single Stage, Direct Spark Ignition V = Two Stage, Direct spark Ignition W = Electronic Modulation W/Duct Sensing & Room Override Stat S = Special							Digit 10	- Design Sequence A = Forth Generation							

GENERAL ASSEMBLY

75010451

REV
B

TYPICAL ILLUSTRATION



Part No.	Reference No.	Quantity	Description
CAB01185	*	1	CABLE; IGNITION-36 IN. LONG
CON01299	*	1	CONNECTOR; MOLEX ASSY(LEADS 19 IN LONG)
GKT04710	*	1	NO DESCRIPTION AVAILABLE
TUB13659	*	1	NO DESCRIPTION AVAILABLE
EXC02565	1	1	EXCHANGER; VESTIBULE PANEL/TUBE ASSY (HEAT EXCHANGER & FLUE COLLECTOR)
BRK04449	2	1	BRACKET; MANIFOLD, SUB-ASSY
MFD01375	3	1	MANIFOLD;
BNR01230	4	8	BURNER; INSHOT
ORF01751	5	8	ORIFICE; STANDARD
VAL08916	6	1	VALVE; SINGLE STAGE NATURAL(NG)
PIP01724	7	1	PIPE; ASSEMBLY, GAS INLET
GRM01038	8	1	GROMMET; GAS INLET
SEN02145	9	1	SENSOR; FLAME SENSOR, DS, 1.500"
CNT05013	10	1	CONTROL; SPARK IGNITOR
BRD03396	11	1	BOARD; CONTROL
TRR01251	12	1	TRANSFORMER; 50VA, 120V PRI., 24V SEC
SWT03704	13	1	SWITCH; PRESSURE SWITCH 1.10" PINK
SWT03838	13	1	SWITCH; AIR PRESSURE STD ALT (0-4999 FT)
CNT07193	14	1	CONTROL; SUB-PANEL
PLT05204	15	1	PLATE; TERMINAL BLOCK
SWT03839	16	2	SWITCH; HIGH LIMIT
GKT04707	18	1	GASKET; FLUE COLLECTOR
PNL31022	19	1	PANEL; FLUE COLLECTOR COVER
BLW01342	20	1	BLOWER; POWER VENTER (DRAFTER) ASSY
PNL31003	21	1	PANEL; POWER VENT EXTENSION/STAND-OFF
ADP01367	22	1	ADAPTER; FLUE COLLAR ASSEMBLY
SRN00993	23	1	SCREEN; AIR INLET
BAF01411	24	1	BAFFLE;
PNL31004	25	1	PANEL; TOP JACKET W/ INSULATION
PNL31005	26	1	PANEL; BOTTOM JACKET W/ INSULATION
PNL31024	27	1	PANEL; RIGHT SIDE JACKET W/ INSULATION
PNL31025	28	1	PANEL; LEFT SIDE/ACCESS
PNL31026	29	1	PANEL; REAR
PNL31027	30	1	PANEL; FRONT
GLS01083	31	1	GLASS; PEEP HOLE SIGHT

Part No.	Reference No.	Quantity	Description
TRR02276	*	1	TRANSFORMER; 4000-01E07
VAL02178	*	1	VALVE; MODULATING & REGULATING (NOT THE GAS VALVE)MAIXTROL SYSTEM MR VALVE 610 3/4 IN NG

Part No.	Reference No.	Quantity	Description
KIT16810	*	1	KIT; CONVERTING FROM NAT. GAS TO LP GAS
KIT16811	*	1	KIT; CONVERTING FROM LP GAS TO NAT. GAS
TRR00923	*	1	TRANSFORMER; 500VA, 240-480/120-240V
TRR00924	*	1	TRANSFORMER; 500VA, 600/120-240V
TRR01505	*	1	TRANSFORMER; 50VA, 120V PRI., 24V SEC., FOOT MOUNTED, CLASS 2
TRR01740	*	1	TRANSFORMER; 230-24V, 50VA, 2A
TRR01840	*	1	TRANSFORMER; 208/115, 500VA (STEP DOWN)

MODEL "TD"

75010453

REV
A

REPLACEMENT PARTS

"TD" FIELD INSTALLED OPTIONS AND THERMOSTATS

Balloon #:	DESCRIPTION	Rule:	Mne #:
1	PRESSURE REGULATOR (0.5 to 10 PSI) NATURAL GAS [A7]		REG00599
2	PRESSURE REGULATOR (10 to 20 PSI) NATURAL GAS [A7]		REG00600
3	PRESSURE REGULATOR (20 to 35 PSI) NATURAL GAS [A7]		REG00601
4	T87K 1-STAGE THERMOSTAT, WITH SUBBASE [G1] *		THT03087
5	T834N 1-STAGE W/ FAN SWITCH THERMOSTAT (STERLING LOGO) [G3] *		THT03088
6	TH5220D 2-STAGE THERMOSTAT, WITH SUBBASE [G5] *		THT02244
7	T6169C 1-STAGE LINE VOLTAGE (115V) THERMOSTAT, WITH SUBBASE [G8]		THT02339
8	T822K 1-STAGE THERMOSTAT [G9] *		THT03089
9	TG511A UNIVERSAL THERMOSTAT GUARD/LOCKING COVER [G6]		GRD00334
10	24V SPST RELAY		RLY00871
11	LOW AMBIENT CONTROL		CNT07136
12	VENT CAP 5" (100-200) [M2-2]	5-7=010,015,020;15-30=5	CAP00549
13	VENT CAP 6" (250-400) [M2-3]	5-7=025,030,035,040;15-30=6	CAP00550
14	HORIZONTAL AND VERTICAL LOUVER KIT (Size 100)	5-7=010;15-30=G	KIT16796
15	HORIZONTAL AND VERTICAL LOUVER KIT (Size 150)	5-7=015;15-30=G	KIT16797
16	HORIZONTAL AND VERTICAL LOUVER KIT (Size 200)	5-7=020;15-30=G	KIT16798
17	HORIZONTAL AND VERTICAL LOUVER KIT (Size 250)	5-7=025;15-30=G	KIT16799
18	HORIZONTAL AND VERTICAL LOUVER KIT (Size 300)	5-7=030;15-30=G	KIT16800
19	HORIZONTAL AND VERTICAL LOUVER KIT (Size 350)	5-7=035;15-30=G	KIT16801
20	HORIZONTAL AND VERTICAL LOUVER KIT (Size 400)	5-7=040;15-30=G	KIT16802
21	HORIZONTAL COMBUSTION AIR INLET KIT, 5 INCH (TD 100-200)	5-7=010,015,020	KIT16803
22	HORIZONTAL COMBUSTION AIR INLET KIT, 6 INCH (TD 250-400)	5-7=025,030,035,040	KIT16804
23	VERTICAL COMBUSTION AIR INLET KIT, 5 INCH (TD 100-200)	5-7=010,015,020	KIT16805
24	VERTICAL COMBUSTION AIR INLET KIT, 6 INCH (TD 250-400)	5-7=025,030,035,040	KIT16806
25	AIR INLET KIT, 5 INCH (TD 100-200)	5-7=010,015,020	KIT16807
26	AIR INLET KIT, 6 INCH (TD 250-400)	5-7=025,030,035,040	KIT16808
27	STAINLESS STEEL DRIP PAN		PAN03794
28	TOUCH UP PAINT, 12oz. SPRAY CAN (DARK GRAY)		PAI00087
29	HIGH TEMP (RTV) SEALANT - 2.8oz. TUBE		SEL01221

* Mercury Free

Part No.	Reference No.	Quantity	Description
REG00599	1	1	REGULATOR; PRESSURE, (0.5 TO 10 PSI) NATURAL GAS [A7-1/2-1]
REG00600	2	1	REGULATOR; PRESSURE, (10 TO 20 PSI) NATURAL GAS [A7-3/8-1]
REG00601	3	1	REGULATOR; PRESSURE, (20 TO 35 PSI) NATURAL GAS [A7-5/16-1]
THT03087	4	1	T87K 1-STAGE THERMOSTAT, WITH SUBBASE [G1] *
THT03088	5	1	T834N 1-STAGE W/ FAN SWITCH THERMOSTAT (STERLING LOGO) [G3] *
THT02244	6	1	THERMOSTAT; TW0-STAGE ROOM
THT02339	7	1	THERMOSTAT; LIGHT DUTY COMBINATION THERMOSTAT AND SUBBASE,
GRD00334	9	1	GUARD; THERMOSTAT (LOCKING COVER)
RLY00871	10	1	RELAY; SPST, 24 VAC COIL
CNT07136	11	1	LOW AMBIENT CONTROL H5
KIT16804	22	1	KIT; HORIZONTAL COMBUSTION AIR INLET, 6 INCH (TD 250-400)
KIT16806	24	1	KIT; VERTICAL COMBUSTION AIR INLET, 6 INCH (TD 250-400)
KIT16808	26	1	KIT; AIR INLET, 6 INCH (TD 250-400)
PAI00087	28	1	PAINT; AEROSOL, LT.GRAY (SHIPPING UOM 12 OZ HAZ)
SEL01221	29	1	SEALANT; HIGH TEMP (RTV) - 2.8OZ. TUBE