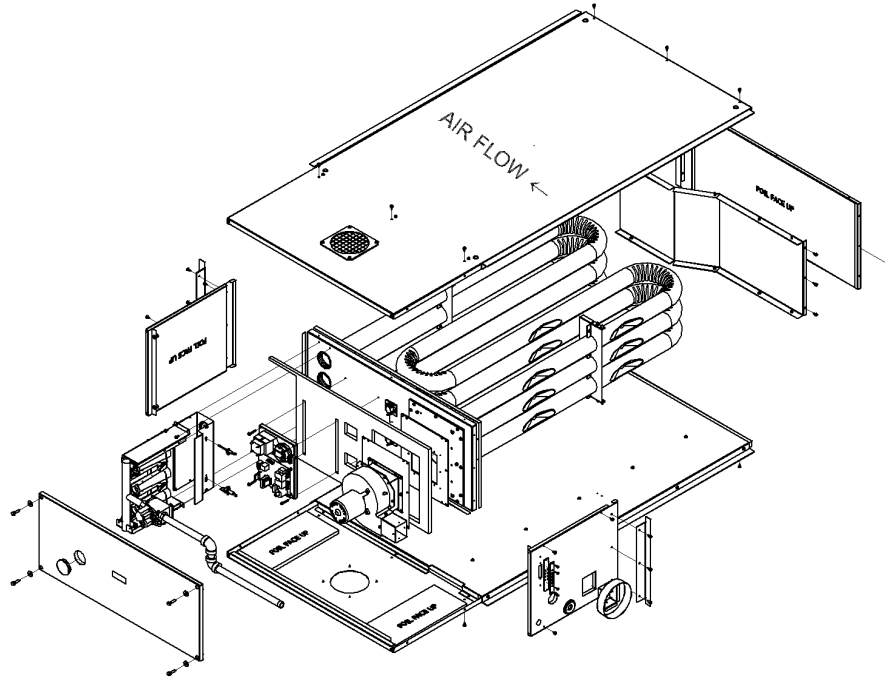


TABLE OF CONTENTS

75010452

REV
A



SECTION 01	MODEL NUMBER DESCRIPTION
SECTION 02	GENERAL ASSEMBLY
SECTION 03	GAS CONTROL PARTS
SECTION 04	CONVERSION KITS & TRANSFORMERS
SECTION 05	FIELD & FACTORY INSTALLED OPTIONS

Parts List Number :GUNEUP1

Model Number :GUNE010AVA10008

Part No.	Reference No.	Quantity	Description
75010454	SEC 01		MODEL NUMBER DESCRIPTION
75010451	SEC 02		GENERAL ASSEMBLY
GUNE1000	SEC 03		GAS CONTROL PARTS
GUNE1001	SEC 04		CONVERSION KITS & TRANSFORMERS
75010453	SEC 05		FIELD AND FACTORY INSTALLED OPTIONS

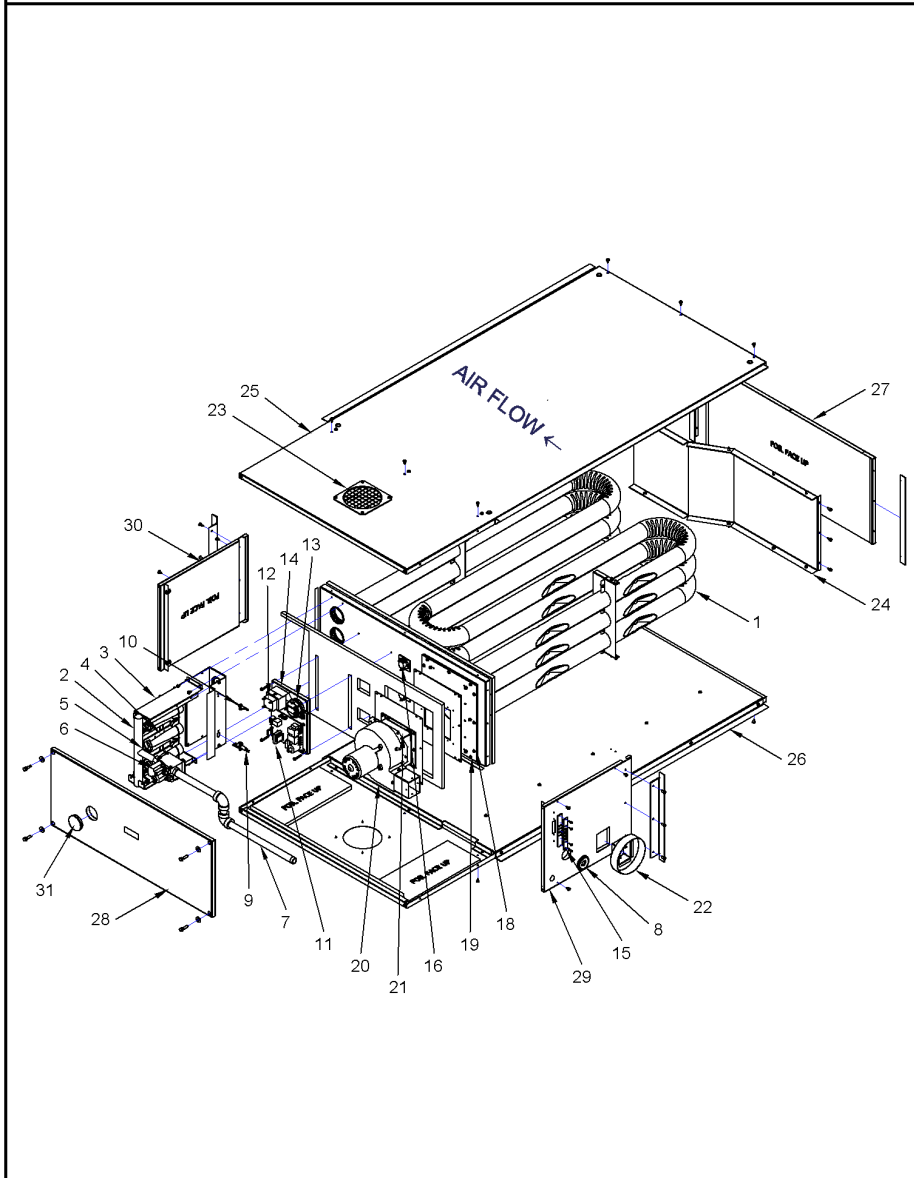
MODEL NUMBER DESCRIPTION		75010454	REV A													
Tubular Duct Furnace																
	<u>G</u>	<u>U</u>	<u>N</u>	<u>E</u>	<u>0</u>	<u>2</u>	<u>0</u>	<u>A</u>	<u>T</u>	<u>A</u>	<u>1</u>	<u>0</u>	<u>0</u>	<u>0</u>	<u>J</u>	
DIGIT	1	2	3	4	5	6	7	8	9	10	11	12	13	14	15	
Digit 1	- Gas Heating Equipment G = Gas Heating							Digit 11	- Heat Exchanger Material 1 = Standard Aluminized Steel 2 = #409 Stainless Steel S = Special							
Digit 2	- Unit Type U = Tubular S = Special							Digit 12	- Rooftop Arrangements 0 = None (Indoor Unit) S = Special							
Digit 3	- Fuel Type N = Natural Gas P = LP Gas (Propane) S = Special							Digit 13	- Rooftop Heating Unit 0 = Nont (Indoor Unit) S = Special							
Digit 4	- Development Sequence E = Fifth Generation								Motor Selection							
Digit 5,6 & 7	- Input Capacity 010 = 100 MBh 030 = 300 MBh 015 = 150 MBh 035 = 350 MBh 020 = 200 MBh 040 = 400 MBh 025 = 250 MBh							Digit 14	- Rooftop Fan Section 0 = None (Indoor Unit) S = Special							
Digit 8	- Main Power Supply A = 115/60/1 E = 460/60/3 B = 230/60/1 F = 575/60/3 C = 208/60/3 G = 208/60/1 D = 230/60/3 S = Special							Digit 15	- Miscellaneous Options All Units 0 = None B = Orifices for Elevation Above 5000 Feet A = Single Stage Room Thermostat B = 1 Stage room W/summer/winter T834 D = Single Stage Duct thermostat E = 2 Stage Room Thermostat TH522 F = Two Stage Duct Thermostat H = 2 Stage Room Thermostat TH522 W/Guard J = Single Stage Room thermostat W/Guard K = Single Stage Line Voltage T6169C T-Stat L = Single Stage, 24 Volt, T822K T'Stat D = With Summer-Winter Switch G = Horizontal and Vertical Louvers T = 3/4" NPT High Gas Pressure Regulator W = 409 Stainless Steel Drain Pan X = Universal Guard for Room T'Stat 5 = 5" Vent Cap 6 = 6" Vent Cap S = Special							
Digit 9	- Gas Control Option H = Electronic Mod. W/Room Sensing J = Electronic Mod. W/Duct Sensing L = Electronic Modulating With Ext. 4-20mA Input N = Electronic Modulating With Ext. 0-10VDC Input T = Single Stage, Direct Spark Ignition V = Two Stage, Direct spark Ignition W = Electronic Modulation W/Duct Sensing & Room Override Stat S = Special							Digit 10	- Design Sequence A = Forth Generation							

GENERAL ASSEMBLY

75010451

REV
B

TYPICAL ILLUSTRATION



Part No.	Reference No.	Quantity	Description
CAB01185	*	1	CABLE; IGNITION-36 IN. LONG
CON01299	*	1	CONNECTOR; MOLEX ASSY(LEADS 19 IN LONG)
GKT04708	*	1	GASKET; POWER VENTER (DRAFTER)
TUB13659	*	1	NO DESCRIPTION AVAILABLE
EXC02559	1	1	EXCHANGER; VESTIBULE PANEL/TUBE ASSY (HEAT EXCHANGER & FLUE COLLECTOR)
BRK04443	2	1	BRACKET; MANIFOLD, SUB-ASSY
MFD01369	3	1	MANIFOLD;
BNR01230	4	2	BURNER; INSHOT
ORF01751	5	2	ORIFICE; STANDARD
VAL08918	6	1	VALVE; TWO STAGE NATURAL GAS(NG)
PIP01723	7	1	PIPE; ASSEMBLY, GAS INLET
GRM01037	8	1	GROMMET; GAS INLET
SEN02145	9	1	SENSOR; FLAME SENSOR, DS, 1.500"
CNT05013	10	1	CONTROL; SPARK IGNITOR
BRD03396	11	1	BOARD; CONTROL
TRR01251	12	1	TRANSFORMER; 50VA, 120V PRI., 24V SEC
SWT03704	13	1	SWITCH; PRESSURE SWITCH 1.10" PINK
SWT03838	13	1	SWITCH; AIR PRESSURE STD ALT (0-4999 FT)
CNT07193	14	1	CONTROL; SUB-PANEL
PLT05204	15	1	PLATE; TERMINAL BLOCK
SWT03839	16	1	SWITCH; HIGH LIMIT
GKT04706	18	1	GASKET; FLUE COLLECTOR
PNL30980	19	1	PANEL; FLUE COLLECTOR COVER
BLW01341	20	1	BLOWER; POWER VENTER (DRAFTER) ASSY
PNL30982	21	1	PANEL; POWER VENT EXTENSION/STAND-OFF
ADP01366	22	1	ADAPTER; FLUE COLLAR ASSEMBLY
SRN00992	23	1	SCREEN; AIR INLET
BAF01405	24	1	BAFFLE;
PNL30983	25	1	PANEL; TOP JACKET W/ INSULATION
PNL30984	26	1	PANEL; BOTTOM JACKET W/ INSULATION
PNL30985	27	1	PANEL; RIGHT SIDE JACKET W/ INSULATION
PNL30986	28	1	PANEL; LEFT SIDE/ACCESS
PNL30987	29	1	PANEL; REAR
PNL30988	30	1	PANEL; FRONT
GLS01083	31	1	GLASS; PEEP HOLE SIGHT

Part No.	Reference No.	Quantity	Description
TRR02276	*	1	TRANSFORMER; 4000-01E07
VAL02327	*	1	VALVE;MAXITROL SYSTEM MR 410, 1/2 INCH, NATURAL GAS

Part No.	Reference No.	Quantity	Description
KIT16810	*	1	KIT; CONVERTING FROM NAT. GAS TO LP GAS
KIT16811	*	1	KIT; CONVERTING FROM LP GAS TO NAT. GAS
TRR00923	*	1	TRANSFORMER; 500VA, 240-480/120-240V
TRR00924	*	1	TRANSFORMER; 500VA, 600/120-240V
TRR01505	*	1	TRANSFORMER; 50VA, 120V PRI., 24V SEC., FOOT MOUNTED, CLASS 2
TRR01740	*	1	TRANSFORMER; 230-24V, 50VA, 2A
TRR01840	*	1	TRANSFORMER; 208/115, 500VA (STEP DOWN)

MODEL "TD"

75010453

REV
A

REPLACEMENT PARTS

"TD" FIELD INSTALLED OPTIONS AND THERMOSTATS

Balloon #:	DESCRIPTION	Rule:	Mne #:
1	PRESSURE REGULATOR (0.5 to 10 PSI) NATURAL GAS [A7]		REG00599
2	PRESSURE REGULATOR (10 to 20 PSI) NATURAL GAS [A7]		REG00600
3	PRESSURE REGULATOR (20 to 35 PSI) NATURAL GAS [A7]		REG00601
4	T87K 1-STAGE THERMOSTAT, WITH SUBBASE [G1] *		THT03087
5	T834N 1-STAGE W/ FAN SWITCH THERMOSTAT (STERLING LOGO) [G3] *		THT03088
6	TH5220D 2-STAGE THERMOSTAT, WITH SUBBASE [G5] *		THT02244
7	T6169C 1-STAGE LINE VOLTAGE (115V) THERMOSTAT, WITH SUBBASE [G8]		THT02339
8	T822K 1-STAGE THERMOSTAT [G9] *		THT03089
9	TG511A UNIVERSAL THERMOSTAT GUARD/LOCKING COVER [G6]		GRD00334
10	24V SPST RELAY		RLY00871
11	LOW AMBIENT CONTROL		CNT07136
12	VENT CAP 5" (100-200) [M2-2]	5-7=010,015,020;15-30=5	CAP00549
13	VENT CAP 6" (250-400) [M2-3]	5-7=025,030,035,040;15-30=6	CAP00550
14	HORIZONTAL AND VERTICAL LOUVER KIT (Size 100)	5-7=010;15-30=G	KIT16796
15	HORIZONTAL AND VERTICAL LOUVER KIT (Size 150)	5-7=015;15-30=G	KIT16797
16	HORIZONTAL AND VERTICAL LOUVER KIT (Size 200)	5-7=020;15-30=G	KIT16798
17	HORIZONTAL AND VERTICAL LOUVER KIT (Size 250)	5-7=025;15-30=G	KIT16799
18	HORIZONTAL AND VERTICAL LOUVER KIT (Size 300)	5-7=030;15-30=G	KIT16800
19	HORIZONTAL AND VERTICAL LOUVER KIT (Size 350)	5-7=035;15-30=G	KIT16801
20	HORIZONTAL AND VERTICAL LOUVER KIT (Size 400)	5-7=040;15-30=G	KIT16802
21	HORIZONTAL COMBUSTION AIR INLET KIT, 5 INCH (TD 100-200)	5-7=010,015,020	KIT16803
22	HORIZONTAL COMBUSTION AIR INLET KIT, 6 INCH (TD 250-400)	5-7=025,030,035,040	KIT16804
23	VERTICAL COMBUSTION AIR INLET KIT, 5 INCH (TD 100-200)	5-7=010,015,020	KIT16805
24	VERTICAL COMBUSTION AIR INLET KIT, 6 INCH (TD 250-400)	5-7=025,030,035,040	KIT16806
25	AIR INLET KIT, 5 INCH (TD 100-200)	5-7=010,015,020	KIT16807
26	AIR INLET KIT, 6 INCH (TD 250-400)	5-7=025,030,035,040	KIT16808
27	STAINLESS STEEL DRIP PAN		PAN03794
28	TOUCH UP PAINT, 12oz. SPRAY CAN (DARK GRAY)		PAI00087
29	HIGH TEMP (RTV) SEALANT - 2.8oz. TUBE		SEL01221

* Mercury Free

Part No.	Reference No.	Quantity	Description
REG00599	1	1	REGULATOR; PRESSURE, (0.5 TO 10 PSI) NATURAL GAS [A7-1/2-1]
REG00600	2	1	REGULATOR; PRESSURE, (10 TO 20 PSI) NATURAL GAS [A7-3/8-1]
REG00601	3	1	REGULATOR; PRESSURE, (20 TO 35 PSI) NATURAL GAS [A7-5/16-1]
THT03087	4	1	T87K 1-STAGE THERMOSTAT, WITH SUBBASE [G1] *
THT03088	5	1	T834N 1-STAGE W/ FAN SWITCH THERMOSTAT (STERLING LOGO) [G3] *
THT02244	6	1	THERMOSTAT; TW0-STAGE ROOM
THT02339	7	1	THERMOSTAT; LIGHT DUTY COMBINATION THERMOSTAT AND SUBBASE,
GRD00334	9	1	GUARD; THERMOSTAT (LOCKING COVER)
RLY00871	10	1	RELAY; SPST, 24 VAC COIL
CNT07136	11	1	LOW AMBIENT CONTROL H5
KIT16803	21	1	KIT; HORIZONTAL COMBUSTION AIR INLET, 5 INCH (TD 100-200)
KIT16805	23	1	KIT; VERTICAL COMBUSTION AIR INLET, 5 INCH (TD 100-200)
KIT16807	25	1	KIT; AIR INLET, 5 INCH (TD 100-200)
PAI00087	28	1	PAINT; AEROSOL, LT.GRAY (SHIPPING UOM 12 OZ HAZ)
SEL01221	29	1	SEALANT; HIGH TEMP (RTV) - 2.8OZ. TUBE