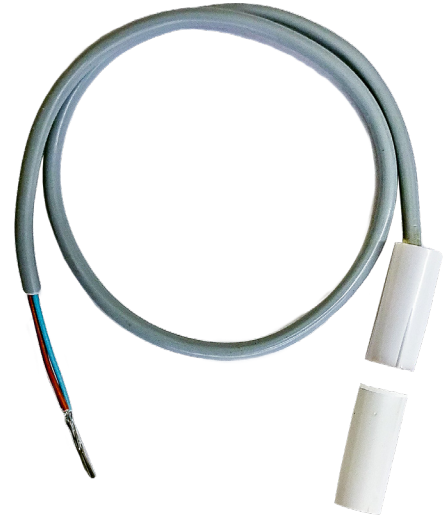
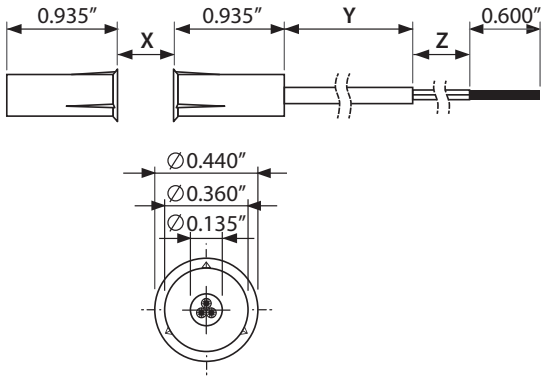


MAGNETIC SWITCH FOR CLOSET LIGHT CONTROLLERS

ACLCMAGDJ

Recessed Mount Magnetic Switch, Form C (SPDT)



SPECIFICATIONS

- Switching Voltage (Max): 200 Vdc
- Switching Current (Max): 0.5 Amp
- Operating Gap: 0 - 0.375" (Dimension X)
- Dimension Y: Approx. 12"
- Dimension Z: Approx. 1"

Wire Color	Normal State	Door Closed	Door Open
Brown	Common	Brown ————	Brown ————
Black	N/O	Black ————	Black ————
Blue	N/C	Blue ————	Blue ————