

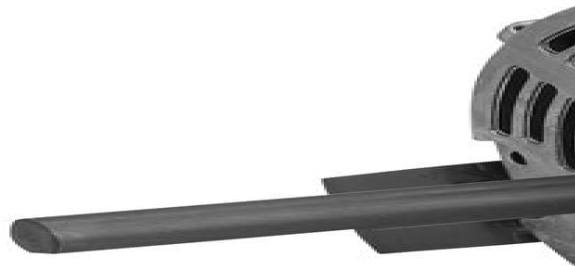
PRODUCT INFORMATION PACKET

FASCO®

Model No: D09649

Catalog No: D09649

OEM Replacement Motor, 1/12 HP, 1 Ph, 60 Hz, 115 V, 1050 RPM, 1 Speed, 42 Frame, OAO



Regal and Fasco are trademarks of Regal Rexnord Corporation or one of its affiliated companies.

©2022 Regal Rexnord Corporation, All Rights Reserved. MC017097E

The logo for Regal Rexnord, featuring a stylized 'R' icon followed by the text 'RegalRexnord' in a blue sans-serif font.



Nameplate Specifications

Output HP	1/12 Hp	Output KW	0.06 kW
Frequency	60 Hz	Voltage	115 V
Current	0.97 A	Speed	1050 rpm
Service Factor	1	Phase	1
Duty	Continuous Air Over	Insulation Class	B
Frame	42	Enclosure	Open Air Over
Thermal Protection	Automatic	Ambient Temperature	40 °C
UL	Recognized	CSA	Y
CE	N	Number of Speeds	1

Technical Specifications

Electrical Type	Permanent Split Capacitor	Starting Method	Across The Line
Poles	6	Rotation	Clockwise Shaft End
Mounting	Lug	Drive End Bearing	Ball
Opp Drive End Bearing	Ball	Frame Material	Rolled Steel
Shaft Type	Flat	Frame Length	3.50 in
Shaft Diameter	0.500 in	Shaft Extension	2.7 in
Outline Drawing	71870428		

This is an uncontrolled document once printed or downloaded and is subject to change without notice. Date Created:11/30/2022

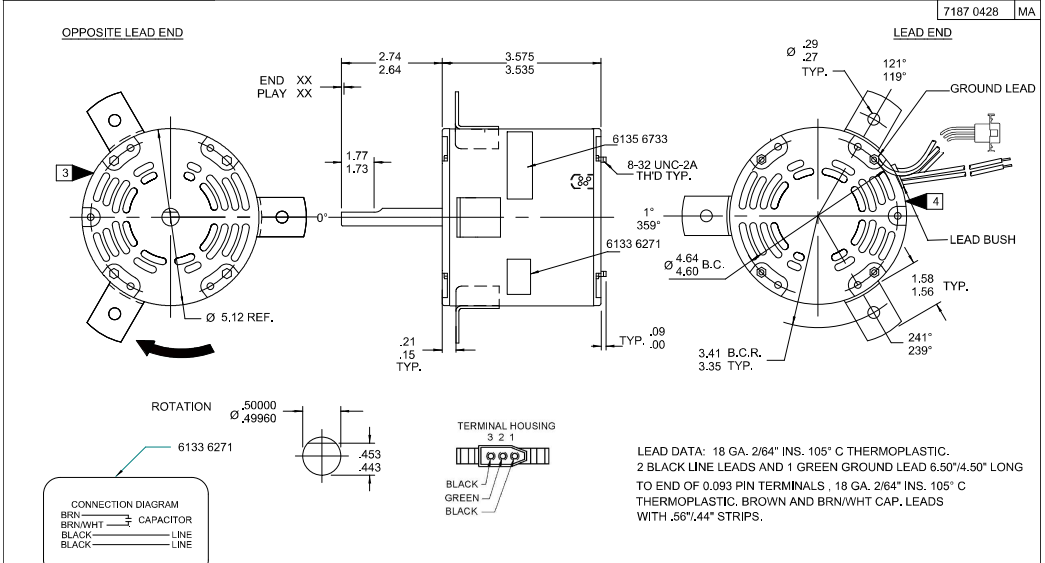
- NOTES
1. STATOR LOCATION DIMENSION IS FROM SLEEVE EDGE (OPPOSITE LEAD END) TO STATOR STEEL 1.04/1.02.
 2. STATOR STACK 7/8" .
 3. THRU AIR SPACING BETWEEN WIRE AND METAL .094 MIN.
 4. TIE BOLT TORQUE TOLERANCE 13-17 IN. LBS.
 5. ASSEMBLE SPRING, 0051 1620, IN OPP. L.E. END SHIELD. ASSEMBLE BEARING SPACER, 0006 1226, IN OPPOSITE END SHIELD.
 6. ASSEMBLE NYLON INSERT 00613346, AROUND LEADS IN LEAD EXIT NOTCH AT 150°.
 7. LOCATE CONNECTION DIAGRAM 61336271, ON CENTERLINE OF SLEEVE AT 315° TO READ RIGHT FROM LEAD END OF MOTOR.
 8. SALES TO SPECIFY ON P.O. WHICH PACK TO USE.

ECO	REV.	DATE	SPEC/CHECK
NMR-0212869	AA	03-09-22	NV/PR
ECR-0219276	AB	07-08-22	NV/NV
ECR-0221901	AC	11/7/22	MP/DP

- 71xx xxxR
- A SEE PACKAGING MANUAL PAGE 2 FOR PACKAGING PROCEDURES.
- 1 MOTOR/CARTON:
 - 15 MOTORS/LAYER:
 - 5 LAYERS/PALLET:
 - 75 MOTORS/PALLET:
- B SEE DRAWING 87856079 SH. 5 FOR PALLET LAYOUT.
- C CENTER LABEL 6131 6837, ON END OF CARTON.
- D PLACE PAMPHLET, 6122 4579, IN CARTON WITH MOTOR.
- 71xx xxxC
- 71xx xxxZ

If Printed, this is an Uncontrolled Document.

PRODUCTION TEST AT IDLE 115 VOLTS 60 HZ		MOTOR SPEED	PERFORMANCE TEST 115 VOLTS 60 HZ 1 PH 1/12 HP CAP. 7.5 MFD 370 VAC										
			IDLE				LOADED				LOCKED		BREAK
AMP	WATT		RPM	AMP	WATT	OZ/IN	RPM	AMP	WATT	OZ/IN	AMP	WATT	OZ/IN
0.51	0.41	HIGH		0.46	51	73.9	1050	1.02	107	27.5		154	80.5
HI-POT TEST 2000 VOLTS													
MAX LEAKAGE CURRENT 5 mA													



FASCO FASCO INDUSTRIES, INC. MOTOR DIVISION ASSEMBLED IN MEXICO

V. 115 HZ 60 PH 1 ROT ←
HP 1/12 INS CL B CAP 7.5 MFD 370 VAC
AMP 1.02 40° C AMB NO. 7187-0428
RPM 1050 AO TYPE U18751
SHIELDED BALL BEARING

MODEL D09649

DATE/BAR CODE AREA PER 8882 6003 THERMALLY PROTECTED

6135 6733.R REV. AC

LOCATE C OF NAMEPLATE ON C OF SLEEVE TO READ RIGHT FROM LEAD END OF MOTOR CENTER AT 45° CWL.E.
SIZE 2.30 X 1.05

SPECIAL INSTRUCTIONS: SHAFT IS BONDERIZED.

MOTORS PACKED MAX. PER SKID: PALLET PACK, 75 CARTON PACK, TRAY PACK.

CUSTOMER: FASCO DISTRIBUTING CO.

PART NUMBER: D09649

APPLICATION: DIST. SALES

FINISH COLOR: GRAY

MOTOR WEIGHT: LBS.

ENVIRONMENT: DRY

INSULATION CLASS: B

MOTOR TYPE

MOTOR NUMBER: 7187 0428

REV. AB

P.S.C.

B	LA	FR	A	S	C	E	B	A
00	87	33	V	19	5	0	0	0

3 of 3