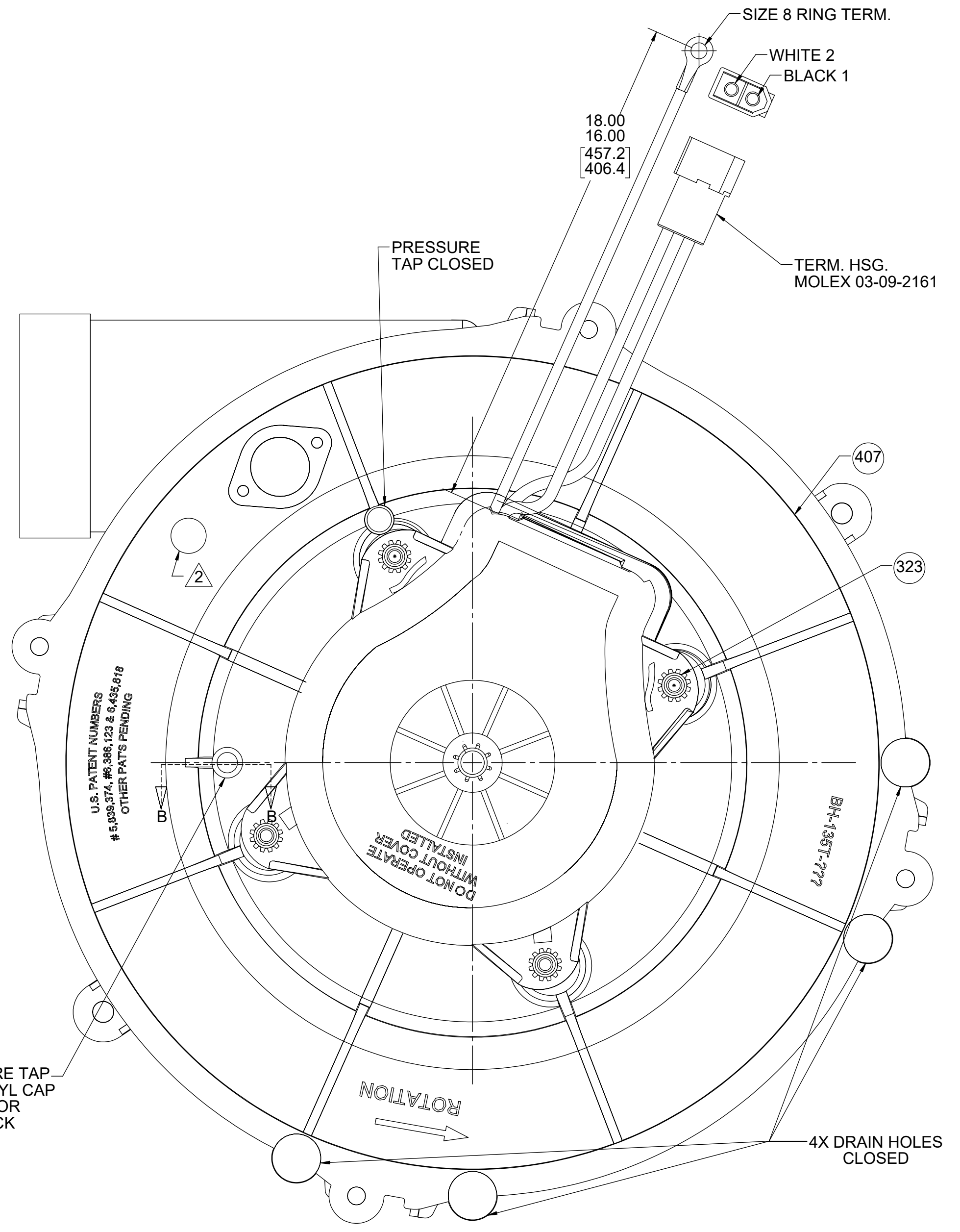
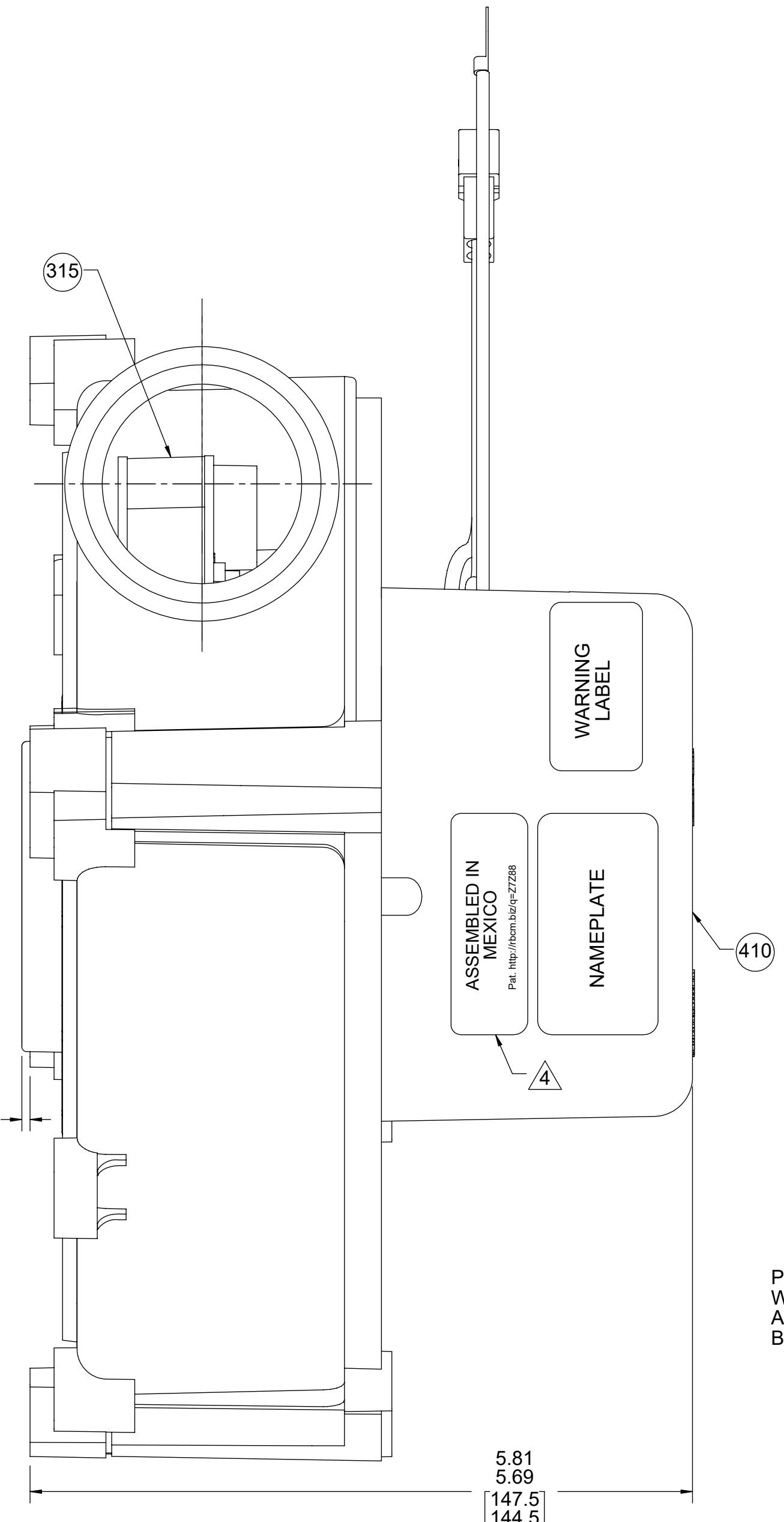
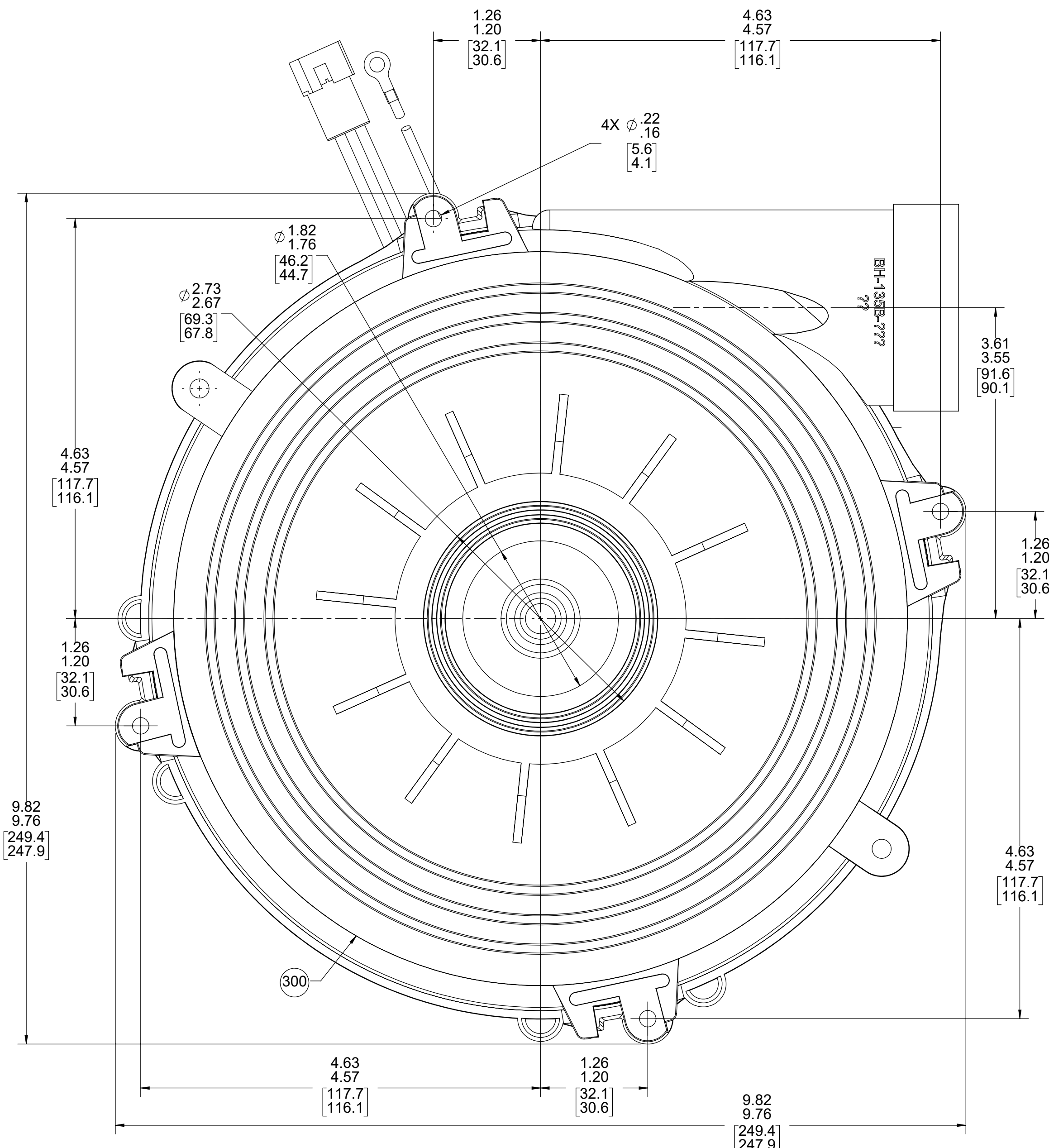
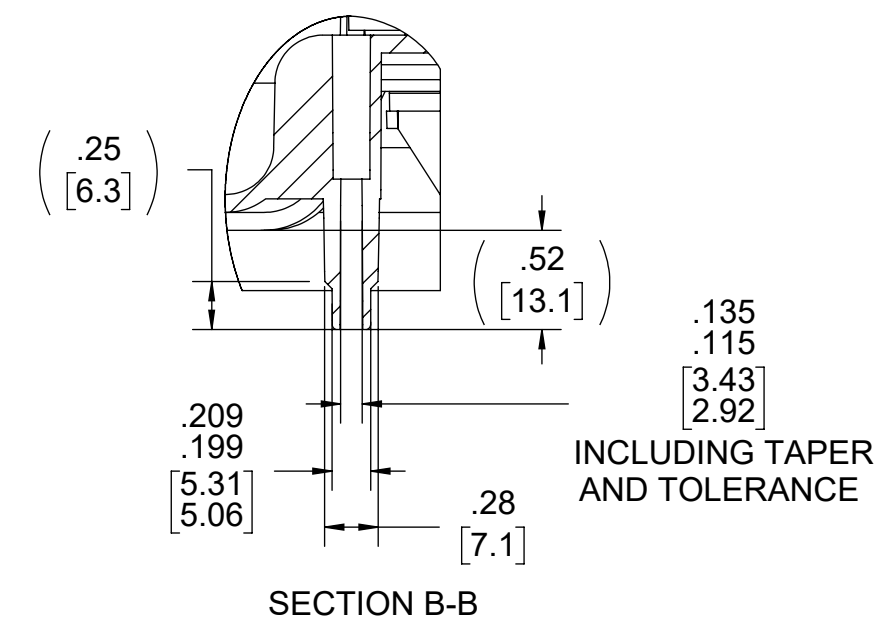


- NOTES:
1. SHAFT MATERIAL: 416 SS.
 2. PLACE YELLOW DOT IN THIS AREA AFTER CHECKING FOR LUBRICANT ON THE SHAFT SEAL.
 3. PACK (1) PC 409 KIT IN EACH CONTAINER WITH BLOWER.
 4. ADD PC 342 LABEL TO BLOWER AS SHOWN.
 5. PACK 1 PER CONTAINER, 9 CONTAINERS PER LAYER, 3 LAYERS PER PALLET, 27 MAX. PER PALLET PER PACK ASSY 87854714, 88834200 AND 88834408.
 6. PLACE (1) FILLER PAD ON EACH PALLET (1) BETWEEN EACH LAYER, AND (1) ON TOP OF PALLET LOAD.
 7. CARTON LABELS MUST ALL FACE ONE DIRECTION TOWARD THE OPEN END OF THE PALLET. SEE 88834408.
 8. NO PACKAGING TAPE OVER CARTON LABEL.

THERMALLY PROTECTED CLASS "B" INSULATION SEALED BALL BEARING 416 SS SHAFT

APPLICATION:	GAS FURNACE	B	LA	FR	A	S	C	E	B	A
CUSTOMER:	FASCO DIST.	PX	58	48	X	06	OC	5	0	0
CUSTOMER PN:	A985									

LEAD MATERIAL
18 GA. 125°C. 2/64 INSUL.
X-LINKED POLY.
(1) BLACK, (1) WHITE
PIN TERM.
AMP 02-09-2101
GROUND LEAD
GRN/YEL



99582727 61299553

FASCO™ 70582727

J238-150 E64080 E48562

115 V 60 Hz 2.4 FLA

Model A985 Max. Amb: 40°C

T.P.L. B 3.3 LRA

T.P. 3300 RPM LR20432

UL, NEMA, and other certification logos.

61305568

SAFETY WARNING
This motor must be grounded in accordance with local or national electrical codes to prevent possible injury due to electrical shock.

AVERTISSEMENT DE SÉCURITÉ
Ce moteur doit être fondée sur conformément à la réglementation locale ou nationale électrique codes pour prévenir d'éventuelles blessures en raison de choc électrique.

61309762

ASSEMBLED IN MEXICO

Pat. http://rbcm.biz/q=Z7288

TYPICAL PERFORMANCE TEST DATA
TEST PER F.O.T. 63004426
AT 115 VOLTS 60 Hz

	RPM	WATTS	AMPS
BLOWER WEIGHT			
5.0 LBS.			
ENDPLAY			
.XX/.XX			

DRAWING REVISION	REVISION BY	REV DATE/DATE	TOLERANCES (EXCEPT AS NOTED):	DRAWN BY	DATE
BF	PLA	1/23/2023	DEC. INCH mm ANGLE	MLS	3/16/2015
REQUEST NUMBER	APPROVED BY	DATE	X ±0.1 [-0.3] ±1°	SDM	
ECR-0222989	SDM	1/23/2023	XX ±0.01 [-0.3]	SDM	
REQUEST NUMBER DESCRIPTION			XXX ±0.005 [-0.13]	DATE	3/16/2015
UPDATED NOTES FROM GREASE TO LUBRICANT			XXXX ±0.0005 [-0.013]	REFERENCE	
REMOVE BURRS & BREAK SHARP EDGES: .003/.015 [08/38] X 45°			MACHINED SURFACES: .125/ INCH mm 3.2	MATERIAL	
			CORNER FILLETS: R.02 [5]	PROCESS/FINISH	NATURAL
			mm DIMENSIONS IN [BRACKETETS] ARE FOR REFERENCE ONLY	THIRD ANGLE PROJECTION	
				SIZE D	
				DRAWING NUMBER	70582727
				SHEET	1 OF 2

Regal Rexnord Regal Beloit America, Inc.

OUTLINE BLOWER ASSY

70582727

