

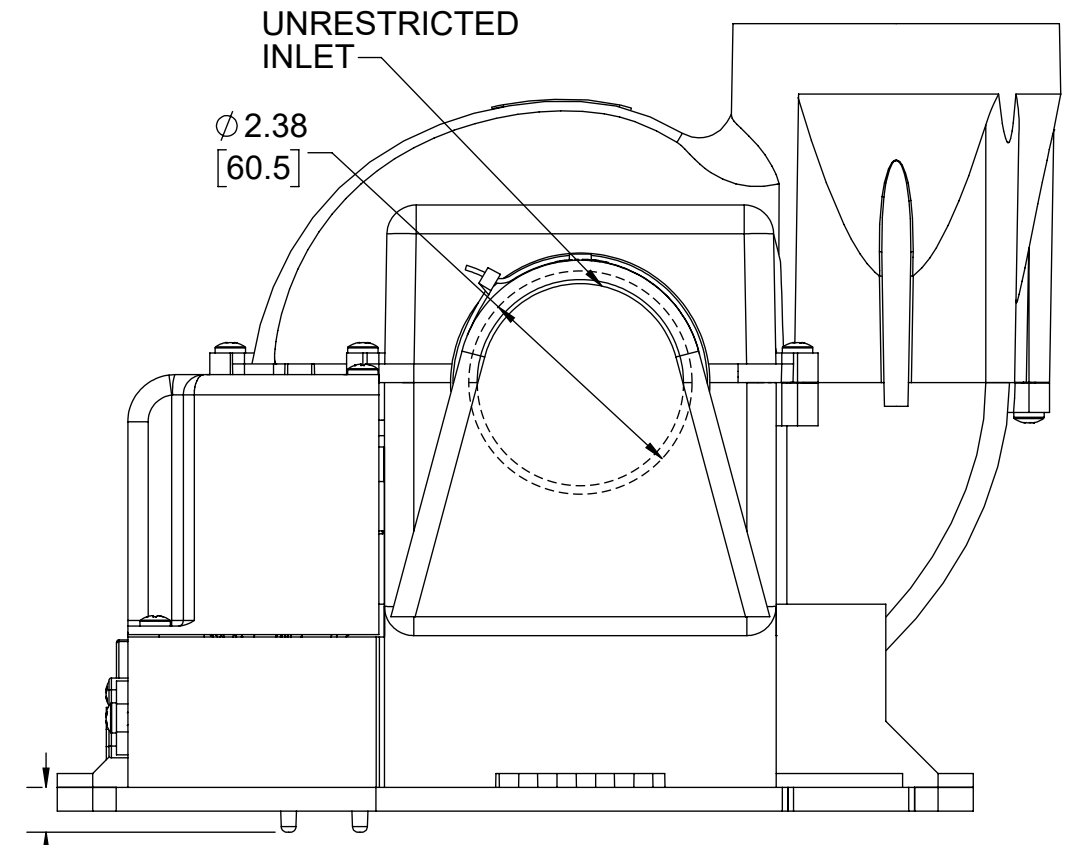
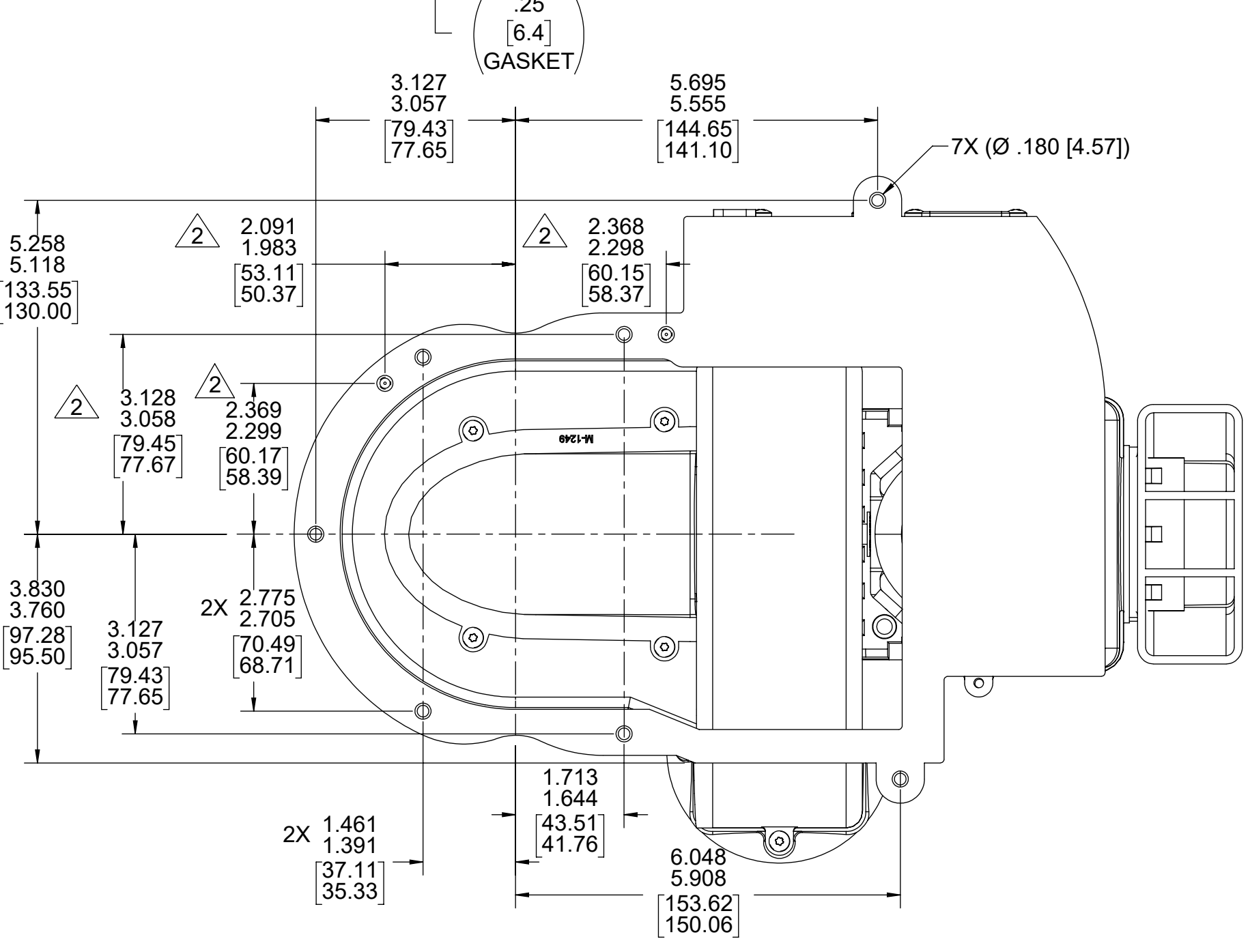
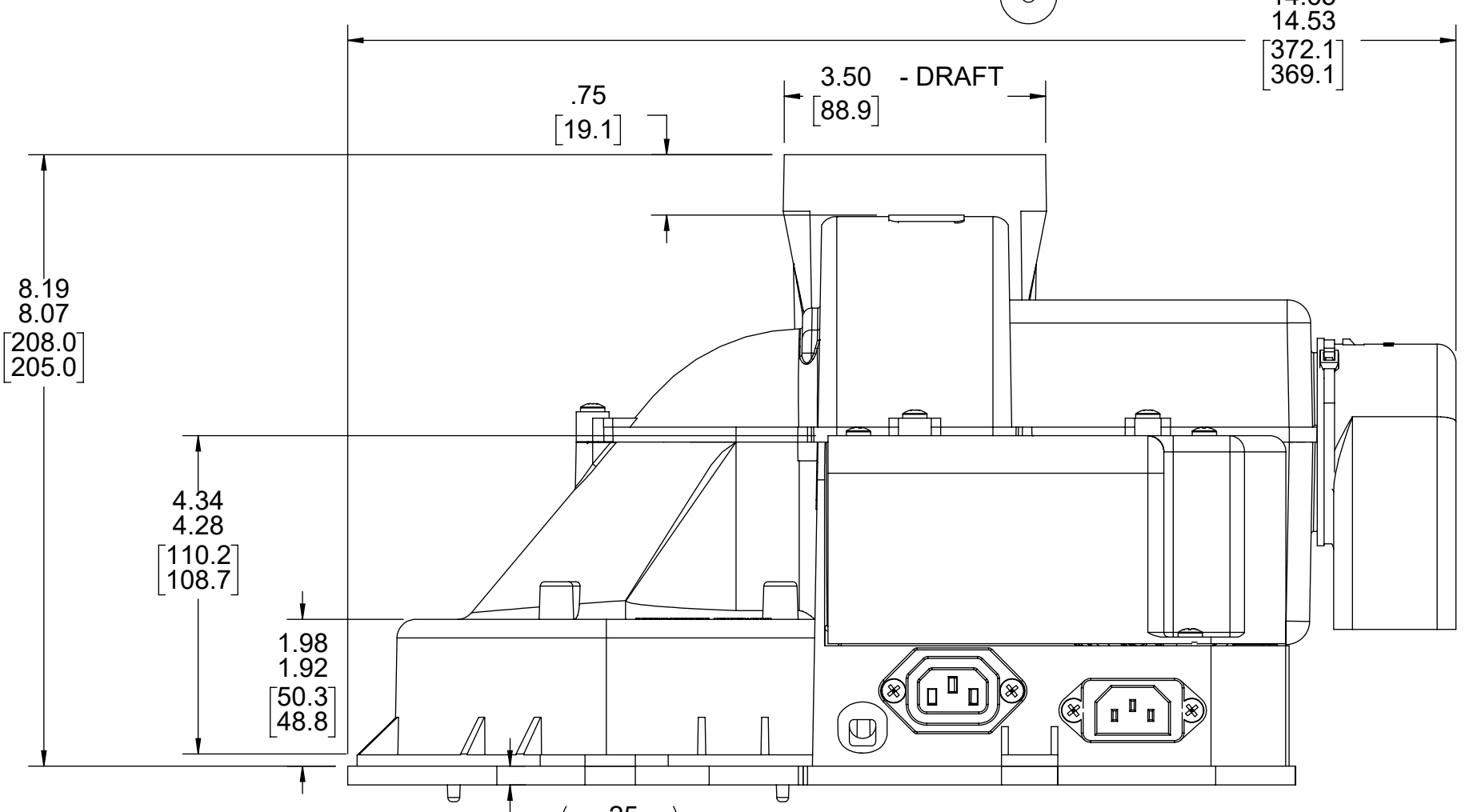
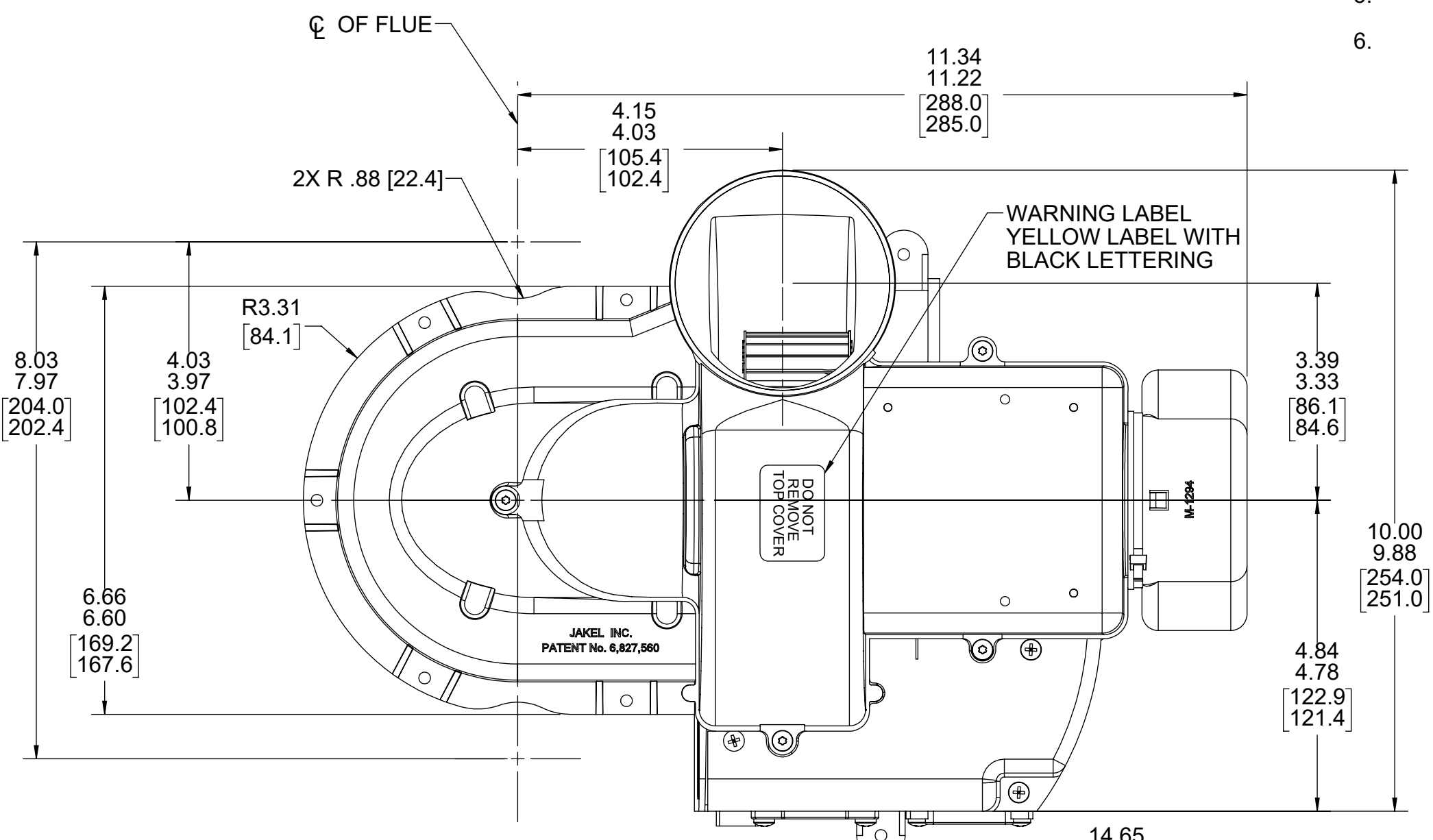
APPLICATION:	DIST.	B	LA	FR	A	S	C	E	B	A
CUSTOMER:	FASCO DIST	PW	21	01	X	06	AO	5	0	0
CUSTOMER PN:	A977	FINISH: BLOWER - BLACK, MOTOR - NATURAL								

- NOTES:
- CUSTOMER PART NO.: A977
 - LOCATING PIN DIMENSIONS.
 - ADAPTER KIT FOR THIS ASSEMBLY IS 87254080. THIS KIT TO BE PLACED IN CARTON WITH BLOWER DURING PACKING. PACK 1 UNIT PER CONTAINER, 6 UNITS PER LAYER, 2 LAYERS PER PALLET, 12 MAX. AMOUNT PER PALLET, PACKING ASSY.: 87855331.
 - CARTON LABELS MUST ALL FACE ONE DIRECTION TOWARD THE OPEN END OF THE PALLET. SEE 88834408.
 - NO PACKAGING TAPE OVER CARTON LABEL.

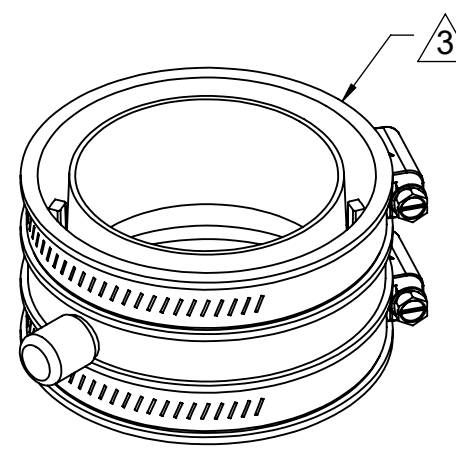
CORDSET MATERIAL
 18 GA. 105°C, 3-COND.
 SJT OR SJTOW BLACK JACKET
 WHITE, BLACK,
 AND GREEN OR GRN/YEL
 121.00/119.00 [3073.4/3022.6]

MOTOR LEAD MATERIAL
 18 GA. 125°C 2/64 INSUL.
 X-LINKED POLY. BLUE
 AND WHITE
 .34/.28 [8.67/.1] STRIP

GROUND LEAD
 18 GA. 125°C 2/64 INSUL.
 X-LINKED POLY.
 GREEN OR GRN/YEL
 .44/.32 [11.2/8.1] STRIP



.4755
 .4745
 [12.078]
 [12.052]
 PIN HEIGHT



61305568

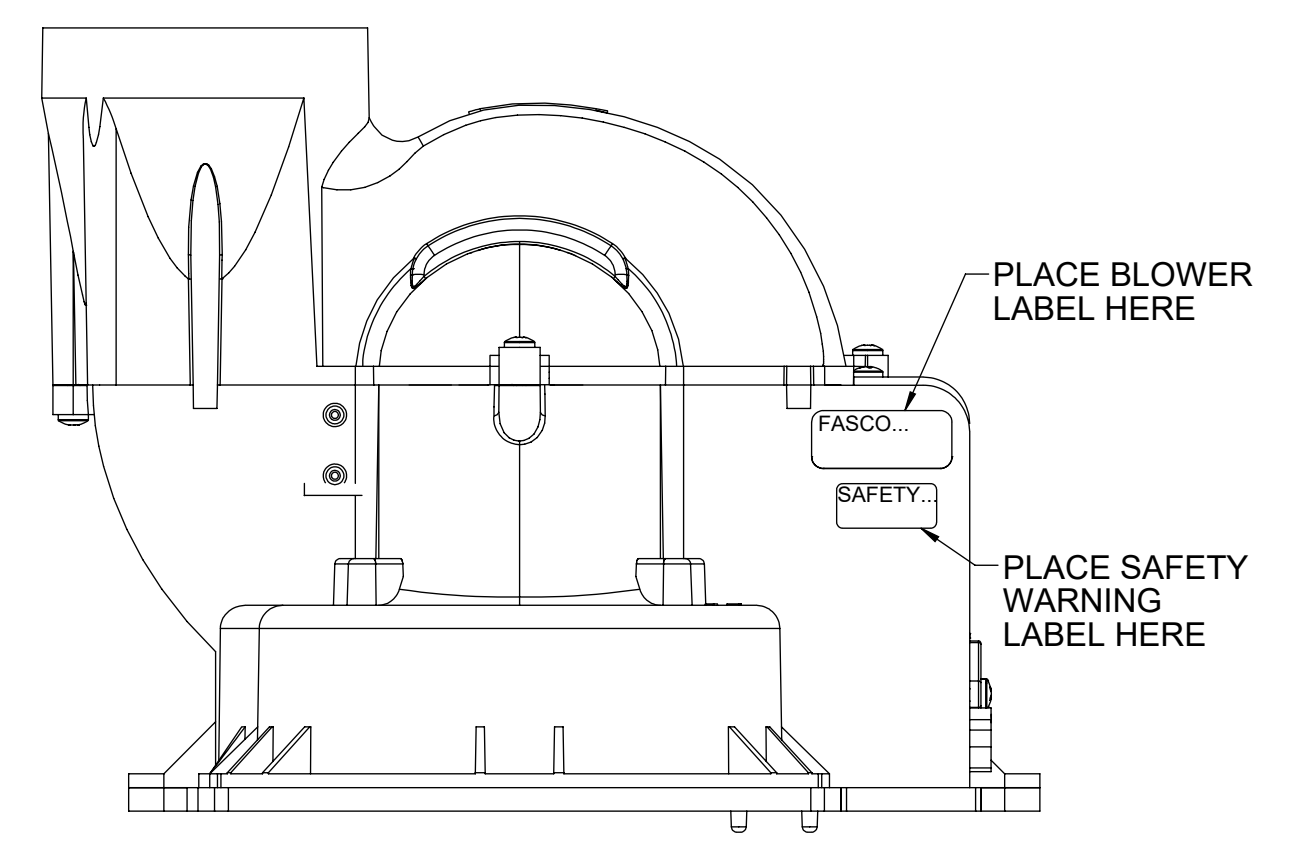
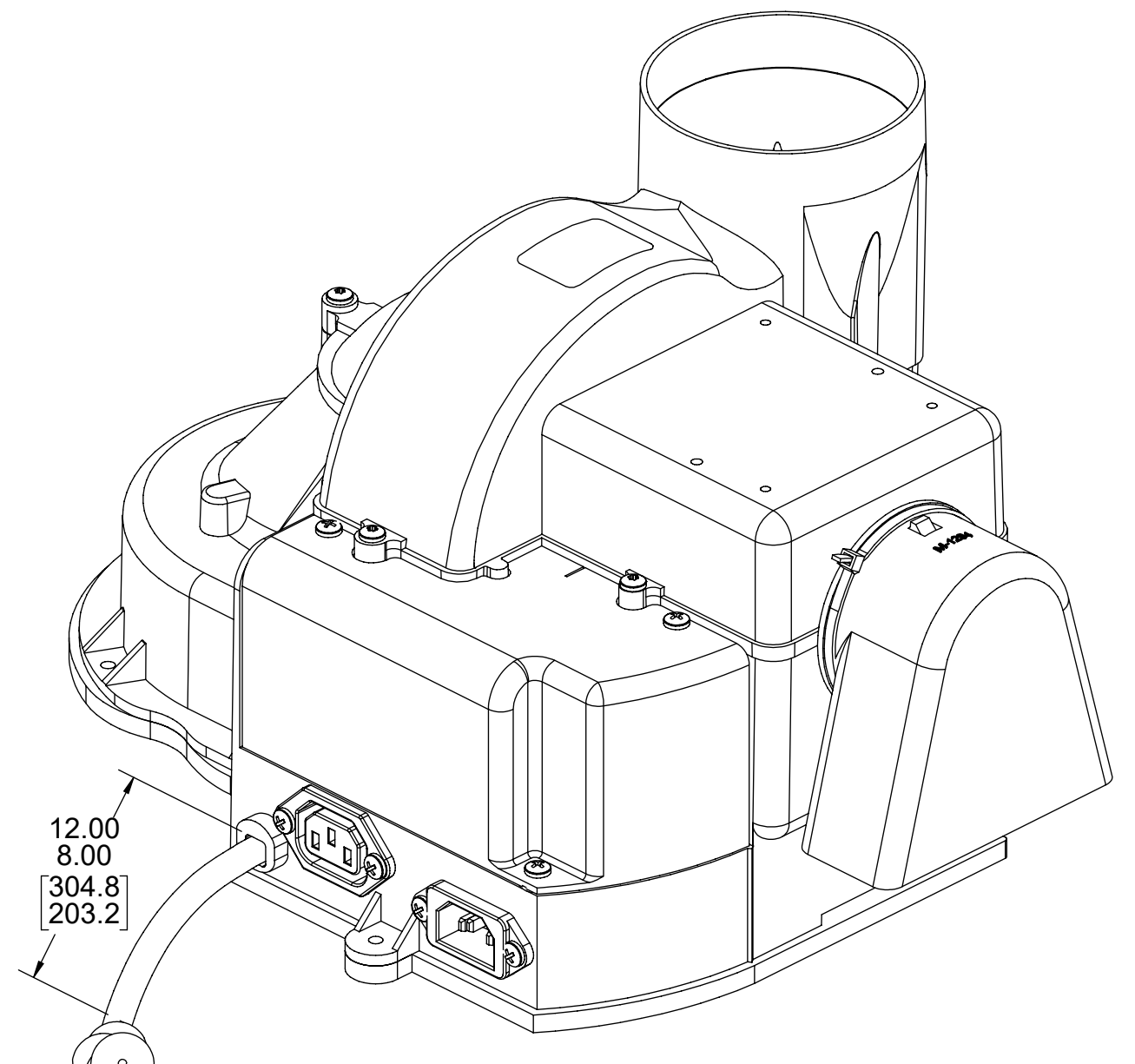
SAFETY WARNING
 This motor must be grounded in accordance with local or national electrical codes to prevent possible injury due to electrical shock.

AVERTISSEMENT DE SECURITE
 Ce moteur doit être fondée sur conformément à la réglementation locale ou nationale électrique codes pour prévenir d'éventuelles blessures en raison de choc électrique.

PERFORMANCE TEST DATA
 TEST BLOWER PER F.O.T. 63004439
 AT 120 VOLTS 60 Hz

	RPM	WATTS	AMPS
BLOWER WEIGHT			
ENDPLAY			

6.5 LBS. .XX/XX



00464316 DATE CODE TIME CODE TESTER CODE

FASCO™ XXXXXXXX XXXXXX XXXXXX
 702112975 Assembled In Mexico
 120 V 60 Hz 3.1 FLA
 Pat. http://rbcm.biz/q=V5N56

BARCODE

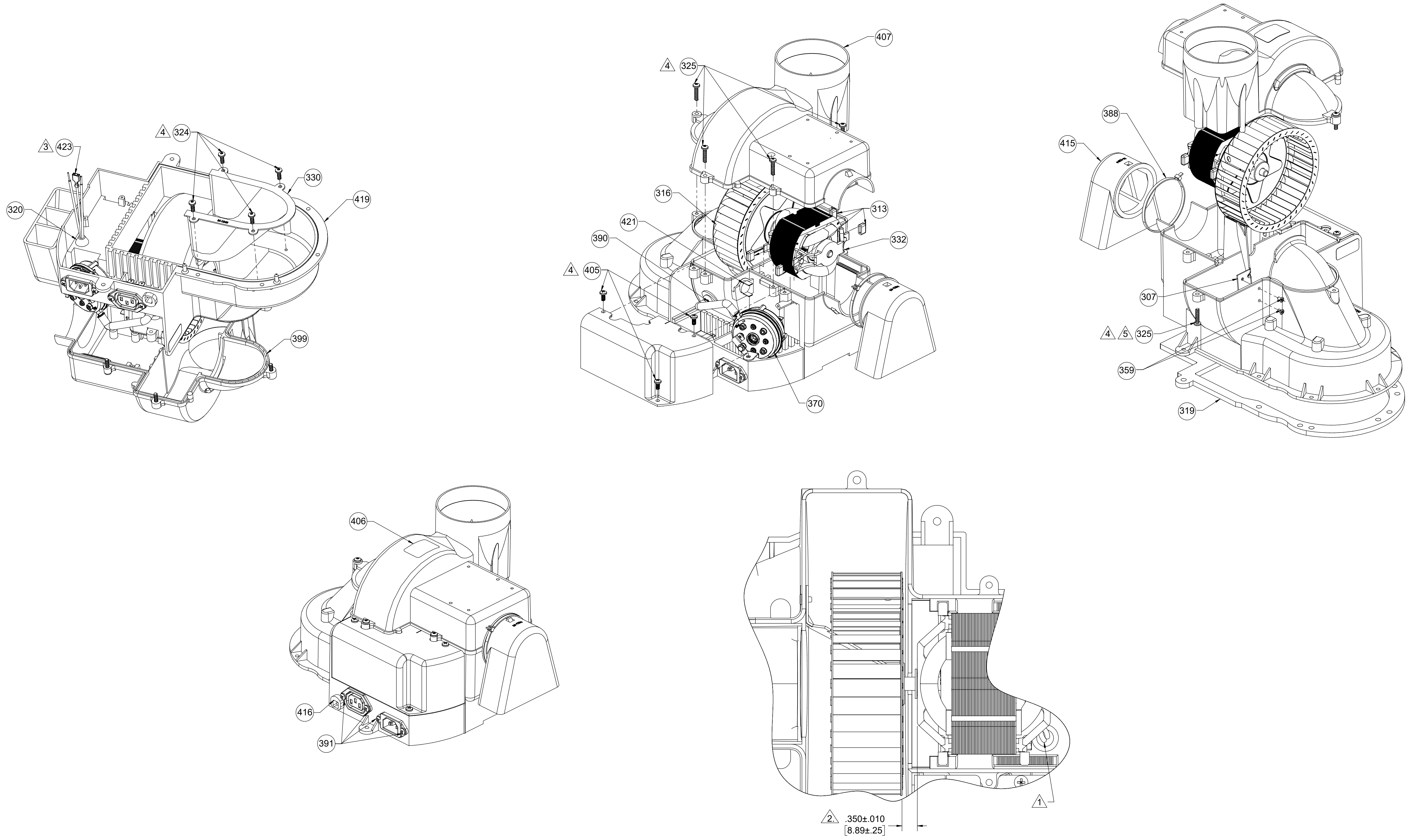
XXXXXXXXXXXXX

(YELLOW)

DRAWING REVISION	REVISION BY	REV DATE/REV	TOLERANCES (EXCEPT AS NOTED):	DRAWN BY	Regal/Rexnord Regal Beloit America, Inc.
CD	SDM	6/28/2022	DEC. INCH mm ANGLE	BGP	
REQUEST NUMBER	APPROVED BY	DATE	X ±0.1 [-0.3] ±1°	DATE	3/31/2015
EOR-0218975	KBB	6/28/2022	XX ±0.01 [-0.3]	APPROVED BY	PLA
REQUEST NUMBER DESCRIPTION	UPDATE BLOWER LABEL TO MATCH FORMAT.		XXX ±0.005 [-0.13]	DATE	3/31/2015
	REMOVE BURRS & BREAK SHARP EDGES: .003/.015 [0.08/.38] X 45°		XXXX ±0.0005 [-0.013]	REFERENCE	MATERIAL
	CORNER FILLETS: R.02 [5]		MACHINED SURFACES: 125/	THIRD ANGLE PROJECTION	PROCESS/FINISH
	RESTRICTIONS UNDER APPLICABLE EXPORT CONTROL LAWS AND REGULATIONS		mm DIMENSIONS IN [BRACKETS] ARE FOR REFERENCE ONLY	SIZE	D
				DRAWING NUMBER	702112975
				SHEET	1 OF 3

NOTES:

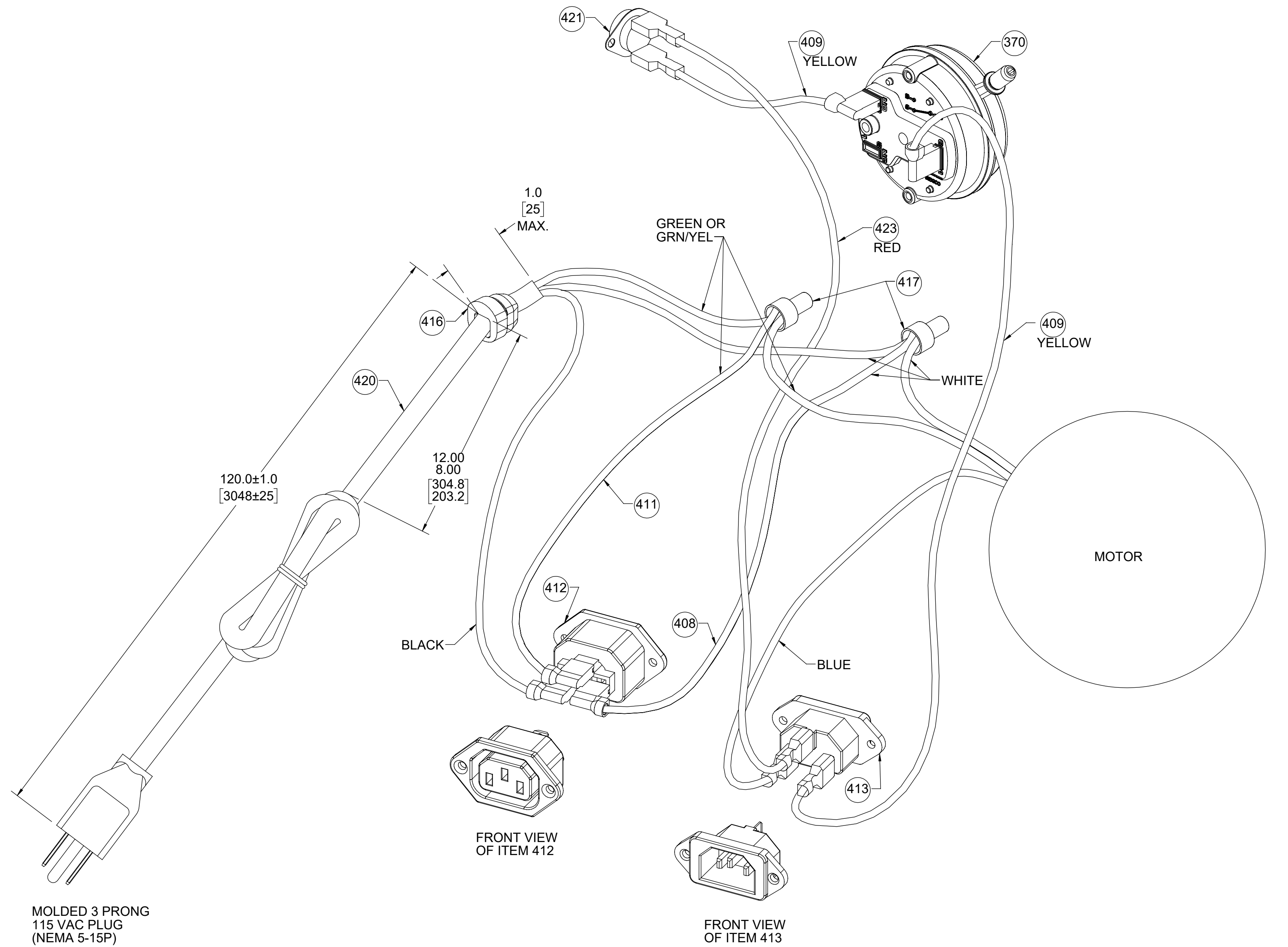
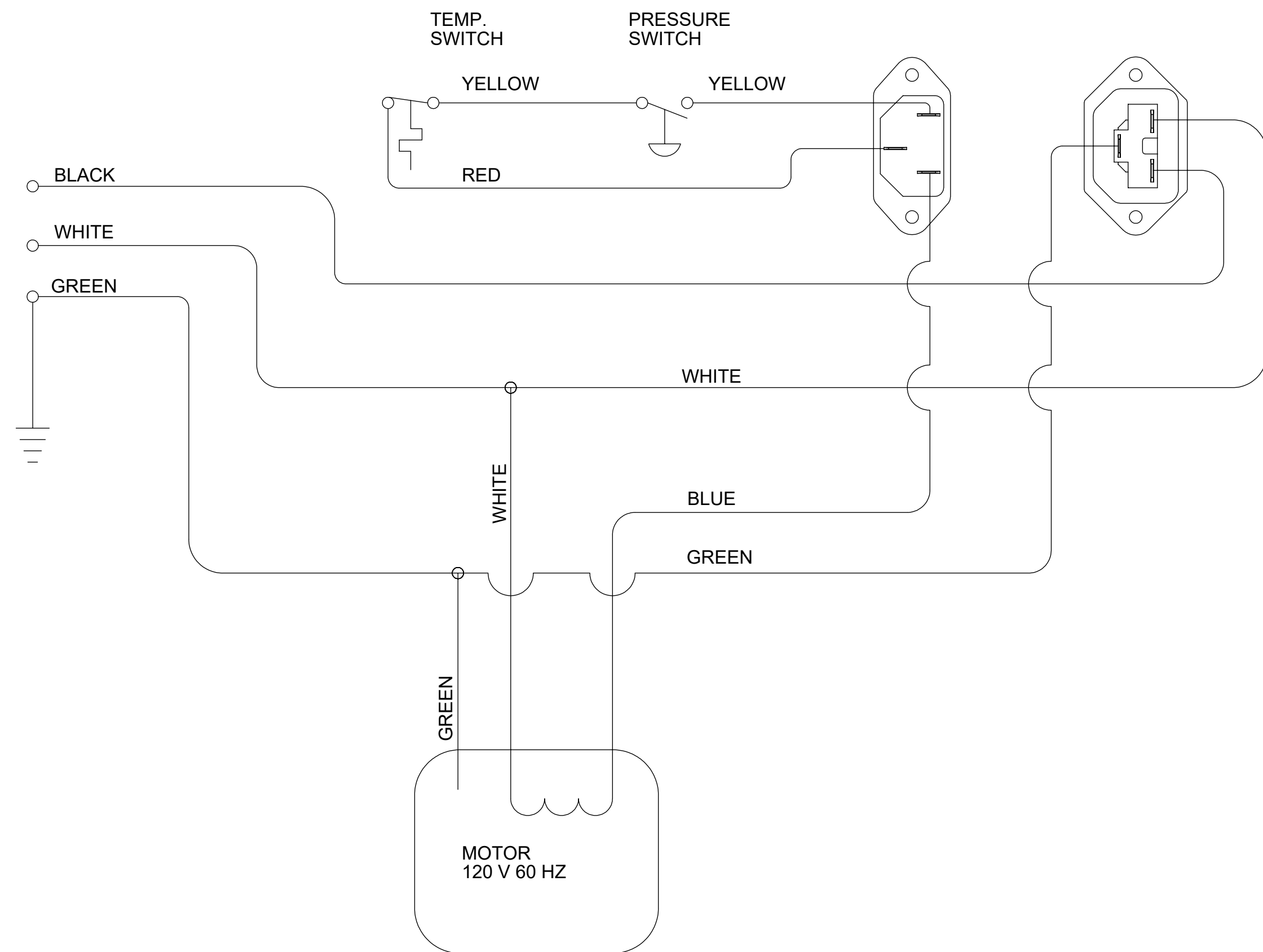
- 1. APPLY SILICONE AROUND LEADS TO SEAL THE GROMMET.
- 2. IMPELLER DIMENSION IS TO BE MEASURED FROM WHEEL HUB TO MOTOR BRACKET.
- 3. ATTACH TERMINAL TO BLUE MOTOR LEAD AFTER LACING LEAD THROUGH THE GROMMET.
- 4. SCREW DRIVE TORQUE 5-9 IN. LBS.
- 5. PC. 325 SCREW ASSEMBLES IN THE OPPOSITE DIRECTION OF THE OTHER SCREWS.



DRAWING REVISION CD	REVISION BY SDM	REV DATE/DATE 6/28/2022	TOLERANCES (EXCEPT AS NOTED): DEC. INCH mm ANGLE X ±0.1 [-3] ±1° XX ±0.01 [-0.3] XXX ±0.005 [-0.13]	DRAWN BY BGP	DATE 3/31/2015	Regal Beloit America, Inc.	
REQUEST NUMBER EOR-0218975	APPROVED BY KBB	DATE 6/28/2022	REQUEST NUMBER DESCRIPTION UPDATE BLOWER LABEL TO MATCH FORMAT.	APPROVED BY PLA	DATE 3/31/2015		OUTLINE BLOWER ASSY
<small> COPYRIGHT (BY REVISION) IS TO REGAL BELOIT AMERICA INC. ALL RIGHTS RESERVED. PROPRIETARY AND CONFIDENTIAL INFORMATION - THIS DOCUMENT IS THE PROPERTY OF REGAL BELOIT AMERICA INC. OWNERSHIP AND CONTENTS OWNERS PROPRIETARY INFORMATION. ANY PERSON, CORPORATION OR OTHER FIRM RECEIVING IT IS DEEMED BY RECEIVING IT, TO AGREE THAT IT, AND/OR ANY PART OF IT, SHALL NOT BE DISCLOSED TO ANY PERSON, CORPORATION OR OTHER ENTITY, DUPLICATED, AND/OR USED, EXCEPT AS EXPRESSLY APPROVED IN WRITING IN ADVANCE BY OWNER. THIS DOCUMENT SHALL BE RETURNED TO OWNER UPON REQUEST. IT MAY BE SUBJECT TO CERTAIN RESTRICTIONS UNDER APPLICABLE EXPORT CONTROL LAWS AND REGULATIONS. </small>			REMOVE BURRS & BREAK SHARP EDGES: .003/.015 [.08/.38] X 45° CORNER FILLETS: R.02 [5] MACHINED SURFACES: 125/ INCH/mm 32/ DIMENSIONS IN [BRACKETS] ARE FOR REFERENCE ONLY	REFERENCE THIRD ANGLE PROJECTION	MATERIAL SIZE D	DRAWING NUMBER 702112975	SHEET 2 OF 3

NOTES:

1. CORDSET MATERIAL: TYPE SJT OR SJTOW, 18/3 105°C U.L. & CSA APPROVED.
2. INTERNAL LEAD WIRE MATERIAL: 18 GA. 105°C PVC U.L. RECOGNIZED STYLE 1015 AND CSA APPROVED.
3. MOTOR LEAD MATERIAL: 18 GA. 125°C 2/64 INSUL. X-LINKED POLY U.L. & CSA APPROVED.
4. THERMAL SWITCH OPEN 165° ± 6° F, CLOSE 145° ± 8° F.
5. PRESSURE SWITCH N.O. SETTING -1.25 ± .07 IN W.C. ON PRESSURE FALL.



DRAWING REVISION CD	REVISION BY SDM	REV DATE/© DATE 6/28/2022	TOLERANCES (EXCEPT AS NOTED): DEC. INCH mm ANGLE X ±0.1 [-3] ±1° XX ±0.01 [-0.3] XXX ±0.005 [-0.13]	DRAWN BY BGP	DATE 3/31/2015	Regal Beloit America, Inc.	
REQUEST NUMBER EOR-0218975	APPROVED BY KBB	DATE 6/28/2022	REMOVE BURRS & BREAK SHARP EDGES: .003/.015 [.08/.38] X 45° CORNER FILLETS: R.02 [5] MACHINED SURFACES: 125/ INCH mm 3.2/ mm DIMENSIONS IN [BRACKETS] ARE FOR REFERENCE ONLY	APPROVED BY PLA	DATE 3/31/2015		DESCRIPTION OUTLINE BLOWER ASSY
<small> COPYRIGHT (P) REVISION (R) TO REGAL BELOIT AMERICA INC. ALL RIGHTS RESERVED. PROPRIETARY AND CONFIDENTIAL INFORMATION - THIS DOCUMENT IS THE PROPERTY OF REGAL BELOIT AMERICA INC. OWNERSHIP AND CONTENTS OWNERS PROPRIETARY INFORMATION. ANY PERSON, CORPORATION OR OTHER FIRM RECEIVING IT IS DEEMED BY RECEIVING IT, TO AGREE THAT IT, AND/OR ANY PART OF IT, SHALL NOT BE DISCLOSED TO ANY PERSON, CORPORATION OR OTHER ENTITY, DUPLICATED, AND/OR USED, EXCEPT AS EXPRESSLY APPROVED IN WRITING IN ADVANCE BY OWNER. THIS DOCUMENT SHALL BE RETURNED TO OWNER UPON REQUEST. IT MAY BE SUBJECT TO CERTAIN RESTRICTIONS UNDER APPLICABLE EXPORT CONTROL LAWS AND REGULATIONS. </small>			REFERENCE	MATERIAL	PROCESS/FINISH		
				THIRD ANGLE PROJECTION	SIZE D	DRAWING NUMBER 702112975	SHEET 3 OF 3