

Ventilation Solutions

Bathrooms



We give you choices

Designing a bath involves many decisions that will ultimately affect its look and function, whether it be a busy family bathroom or a small guest bath with limited space. Or, maybe, you're going all out for that ultra-modern bath retreat with all the amenities.

No matter what style bath you're designing, one thing remains the same - the need for proper ventilation.

And who better to offer you the perfect ventilation solution than Fantech? For more than two decades our quiet ventilating fans have protected bathrooms from the damaging effects of mold and mildew without disturbing your peace and quiet.

Fantech Premium Bath

- Unobtrusive, quiet and efficient
- Superior CFM at higher static pressure
- Rated for continuous duty
- 100% speed controllable
- For use with recommended FIDT flexible
- 7 year warranty



Fans

duct

Quiet Solutions



This symbol identifies the notable lack of audible fan noise compared to even the lowest Sone surface mount solutions on the market*. We are proud to offer our customers a smarter, quieter way to ventilate one or multiple bathrooms.

Energy-Saving Fans

Fantech is proud partner with ENERGY STAR® to provide energy efficient bath ventilation products for your home.

- 2.8 CFM/Watt motor efficiency
- Use 70% less energy than conventional models
- Compatible with controls for more savings



* No standard for testing of remote mount bath fans exists.

A Bathroom with a quiet ventilating fan

As the trend to larger spa-like bathrooms continues to gain popularity, the need for proper ventilation becomes more important. Quick removal of moisture at the source will keep your beautiful bath free of mold and the effects of extreme moisture.

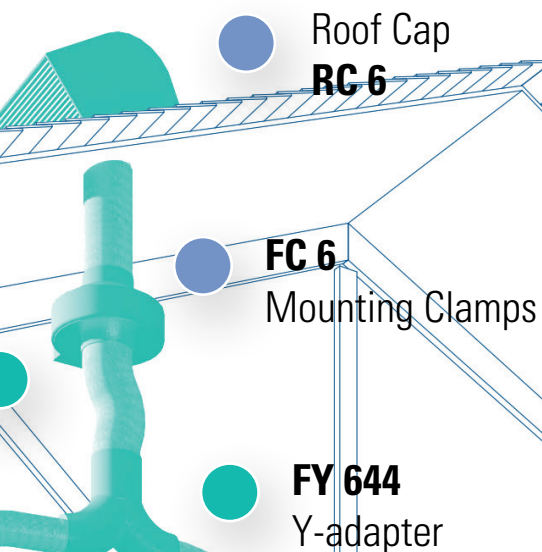
Our Premium Bath Fans with their remote mounted fan can effectively ventilate several areas of the bath. Ceiling Grilles with or without lights can be easily positioned over showers, whirlpool tubs, steam showers, toilet and vanity. The PB Series fans are designed for intermittent or continuous operation to meet **ASHRAE Standard 62.2**.


To learn more about our quiet ventilating fans, please read on or follow us on www.fantech.net


PB 270L-2
Premium Bathroom Exhaust Fan
with Dual Grilles & LED Bulbs

Insulated Flexible Duct
FIDT 4

VT 20M
Main Control



 Part of a Premium Bath Fan kit

 Recommended accessories



A simple tip to help you size a fan for your bath

IF YOUR BATHROOM IS 100 SQ.FT. OR SMALLER

According to the guidelines of HVI (Home Ventilating Institute) baths that are 100 sq.ft. or smaller require 1 CFM per square foot of bathroom or a minimum 50 CFM of fresh airflow. To find the square footage simply multiply the length of the bath by the width. For proper airflow in typical installations (when duct losses aren't calculated), use the 0.4" P_s (static pressure) rating point for correct fan selection.

IF YOUR BATHROOM IS OVER 100 SQ.FT.

Ventilation for baths over 100 sq.ft. is calculated based on the fixtures in the bath. Allow 50 CFM for each standard toilet, shower or tub. Whirlpool and jetted tubs are calculated at 100 CFM. Add up the CFMs for all fixtures and you will have calculated the total CFMs required.

We recommend that steam showers use a separate fan on a timer so that the fan may be shut off during shower use and then run afterward to dry the shower stall.

PB Series - Premium Bath Fans

Single grilles

Clear the air in smaller baths and powder rooms

Unlike standard exhaust fans, the motor of a Fantech fan mounts in a location away from the living area such as an attic. Small unobtrusive ceiling grilles, with or without lights can be mounted in multiple locations over the shower, the toilet and/or the tub, then ducted to the remote fan to quickly and efficiently whisk away moisture, steam and odors. One fan can also be used to ventilate multiple bathroom grilles. It's an ideal solution for back to back bathrooms or large multi-room master bath suites.

PB 110 (PB 190) Premium Bath Fan with one Ceiling Grille

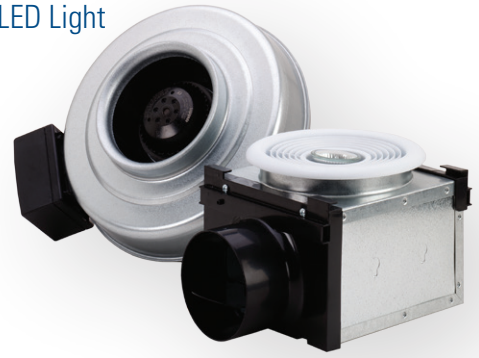


110 CFM (190 CFM) fan, one ceiling grille and grille housing with damper. Uses 4" (6") duct. ENERGY STAR® qualified. UL Listed for wet locations.



PB 110L Premium Bath Fan with Dimmable LED Light

NEW



110 CFM fan, one ceiling grille with LED light, grille housing with damper, 7W dimmable LED bulb. Uses 4" duct. UL Listed for damp locations.



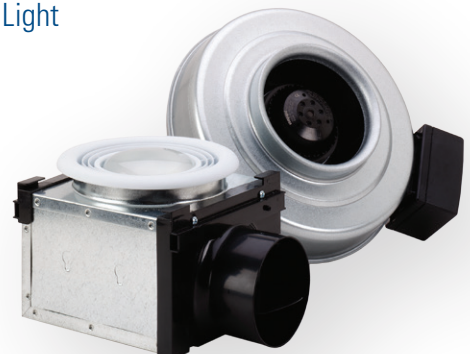
PB 110H Premium Bath Fan with Dimmable Halogen Light



110 CFM fan, one ceiling grille with light, grille housing with damper, 50W halogen bulb. Uses 4" duct. UL Listed for wet locations.



PB 110F (PB 110F-ES*) Premium Bath Fan with Fluorescent Light



110 CFM fan, one ceiling grille with light, grille housing with damper, 14W (15W) instant-on, fluorescent bulb. Uses 4" duct. UL Listed for wet (damp) locations. *ENERGY STAR® qualified.



Ventilation solution for remodeling

BFRK Series

Bath Fan Retrofit Kit

At Fantech we believe that the noise of the fan should not make a statement in your bathroom. It should be unobtrusive, work quietly and efficiently. Convert your existing noisy exhaust fan with our simple to install, simple to maintain bathroom retrofit kit. That's simply better®.

Fantech's retrofit kit includes everything you need:

- 110 cfm ENERGY STAR® rated inline fan with a mounting bracket
- VT 20M Main Control
- Insulated 4" flex duct
- Duct adapters 3" to 4"
- Roll of duct tape
- Electrical wire & wire connectors
- Cable restraints

#412022, 11 lbs, Class 1



Scan this code to watch the
Installation Video on the
YouTube channel ***fantechusa***

PB Series - Premium Bath Fans

Dual grilles

The key for clean oversized baths is spot ventilation

As the trend to larger spa-like bathrooms continues to gain in popularity, the need for proper ventilation becomes more important. Quick removal of large volume of heat and humidity at the source will keep your beautiful bath free of mold and the effects of extreme moisture. Premium Bath Fans with dual grilles with a remote mounted fan motor can effectively ventilate several areas of the bath or several bathrooms, whirlpool tubs, steam showers, toilets.

PB 270-2 (PB 370-2) Premium Bath Fan with Dual Grille



270 CFM (370 CFM) fan, two ceiling grilles, two grille housings with dampers and 4"x4"x6" (6"x6"x6") Y-adapter. Uses 4", 6" ducts. ENERGY STAR® qualified. UL Listed for wet locations.



PB 270L-2 Premium Bath Fan with Dual Grille and Dimmable LED Light

NEW



270 CFM fan, two ceiling grille with LED light, two grille housings with dampers, two 7W dimmable LED bulbs and 4" x 4" x 6" Y-adapter. Uses 4", 6" ducts. UL Listed for damp locations.



PB 270H-2 Premium Bath Fan with Dual Grilles and Dimmable Halogen Light



270 CFM fan, two ceiling grilles with lights, two grille housing with dampers, two 50W halogen bulbs & Y-adapter (4" x 4" x 6"). Uses 4" and 6" ducts. UL Listed for wet locations.



PB 270F-2 (PB 270F-2ES*) Premium Bath Fan with Dual Grilles and Fluorescent Light



270 CFM fan, two ceiling grilles with lights, two grille housings, two 14W (15W) fluorescent bulbs & 4"x4"x6" Y-adapter. Uses 4", 6" ducts. UL listed for wet (damp) locations. *ENERGY STAR® qualified



**DO YOU SEE ANY
RIVETS ON THIS FAN?**

**NEITHER DO WE.
THAT'S WHY IT
NEVER LEAKS.**

We all know that rivets will leak air. Our unique manufacturing process guarantees that no rivets are necessary and ensures an airtight seal. The result? Stale air, odors and humidity leave the bathroom not the fan.

PB Series - Premium Bath Fans

Combination of Dual Grilles

Multiple options, same great performance

Combo units include one exhaust fan, one lit and one unlit ceiling grille. A single model number provides the exact bath fan components needed for a dual location exhaust system. Want to add an additional exhaust location? Just choose an additional ceiling grille with or without a light to turn your one or two location bath fan into a powerful multiport system.

PB 270FV-2 (PB 270FV-2ES*)

Premium Bath Fan with one Ceiling Grille and Fluorescent Light



270 CFM fan, one ceiling grille with light, one vent-only ceiling grille, two grille housings with dampers, 14W (15W) fluorescent bulb and 4"x4"x6" Y-adapter. Uses 4", 6" ducts. UL Listed for wet (damp) locations.

*ENERGY STAR® qualified.



PB 270HV-2

Premium Bath Fan with one Ceiling Grille and Halogen Light



270 CFM fan, one ceiling grille with light, one vent-only ceiling grille, two grille housings with dampers, 50W Halogen bulb and 4"x4"x6" Y-adapter. Uses 4", 6" ducts. UL Listed for wet locations.



PB 270LV-2

Premium Bath Fan with one Ceiling Grille and Dimmable LED Light



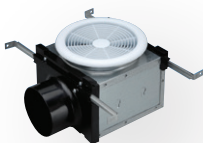
270 CFM fan, one ceiling grille with 7W LED light, one vent-only ceiling grille, two housings with dampers and 4"x4"x6" Y-adapter. Uses 4", 6" ducts. UL Listed for damp locations.



NEW

PBV 4 (PBV 6)

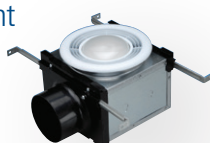
Ceiling Grille Vent



Includes damper, four hanger bars. Fits between 2" x 6" construction. PBV 4 model for use with PB110 and PB270 Series. PBV 6 for use with PB 370 fan.

PBF 4 (PBF 4-ES*)

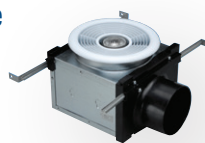
Ceiling Grille with Fluorescent Light



Includes damper, four hanger bars and 14W (15W) instant-on fluorescent bulb. Fits between 2" x 6" construction. For use with PB 110 and PB 270 Series. *ENERGY STAR® qualified.

PBL 4

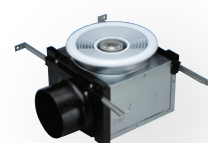
Ceiling Grille with Dimmable LED Light



Includes damper, four hanger bars and 7W Dimmable LED bulb. Fits between 2" x 6" construction. For use with PB 110L, PB 270L-2 and PB 270 LV-2 fans.

PBH 4

Ceiling Grille with Halogen Light



Includes damper, four hanger bars and 50W halogen bulb. Fits between 2" x 6" construction. For use with PB 110H, PB 270H-2 and PB 270HV-2 fans.

PBW Series - Premium Bath Fans

Exterior Wall Mount

No where to exhaust a fan?

Do you have a bathroom that needs to exhaust straight through a wall?

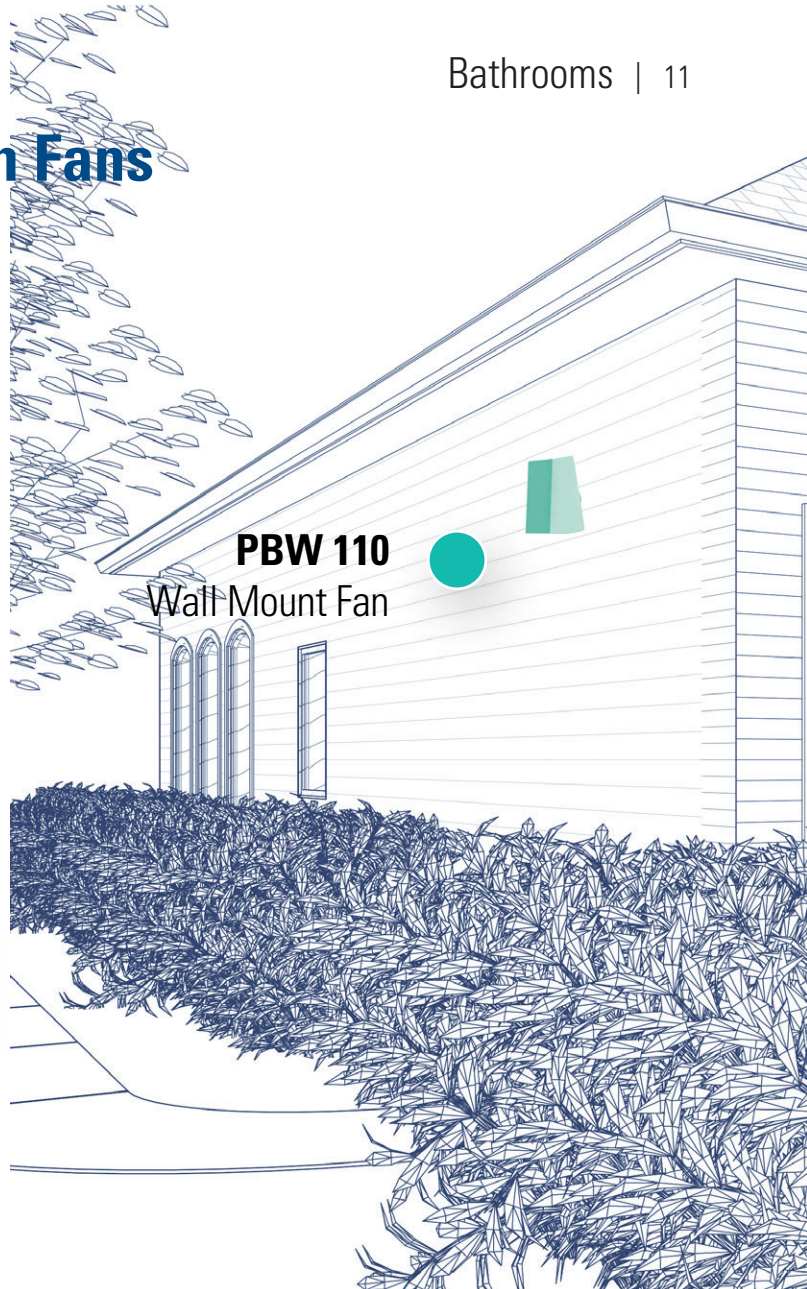
The fan mounts on the side of the home and connects to your grille.

A very easy solution to a very annoying problem.

PBW 110 Exterior Wall Mount Premium Bath Fan with one Ceiling Grille



120 CFM fan, one ceiling grille and grille housing with damper. Uses 4" duct.



PBW 110
Wall Mount Fan

PBW 110H Exterior Wall Mount Premium Bath Fan with Dimmable Halogen Light



120 CFM fan, one ceiling grille with light, grille housing with damper, 50W halogen bulb. Uses 4" duct.



PBW 110F Exterior Wall Mount Premium Bath Fan with Flourescent Light



120 CFM fan, one ceiling grille with light, grille housing with damper, 14W instant-on, flourescent bulb. Uses 4" duct.



Ventech

Programmable Fan Control

A small energy-saving revolution

Who would think that such a small thing like controls would create an air quality revolution in bathrooms? Well, they have. Programmable controls and timers provide a cost-effective way to let the ventilating fan run after use to improve bathroom comfort within a couple of minutes and keep the space free of mold and moisture. Settings can be customized to provide the required amount of ventilation to fit your needs and lifestyle.

It may sound like it's too good to be true. But it's not. Controls give you a completely new way to manage daily ventilation in your bathrooms, while saving money on lower energy bills. Shouldn't that be an everyday revolution?



VT 20M

Main Control

- Infinite Speed Control can be set so ventilation fan runs at any speed between 0-100%
- Programmable Timer – run-time adjustable from 0-60 minutes per hour
- High Speed 20 minute boost activated by pressing touch pad on main unit (or any auxiliary unit). Blue LED illuminates on all units when high speed boost is activated.
- Intermittent or continuous ventilation

Item # 45386, Class 1

VT 20A

Auxiliary Control

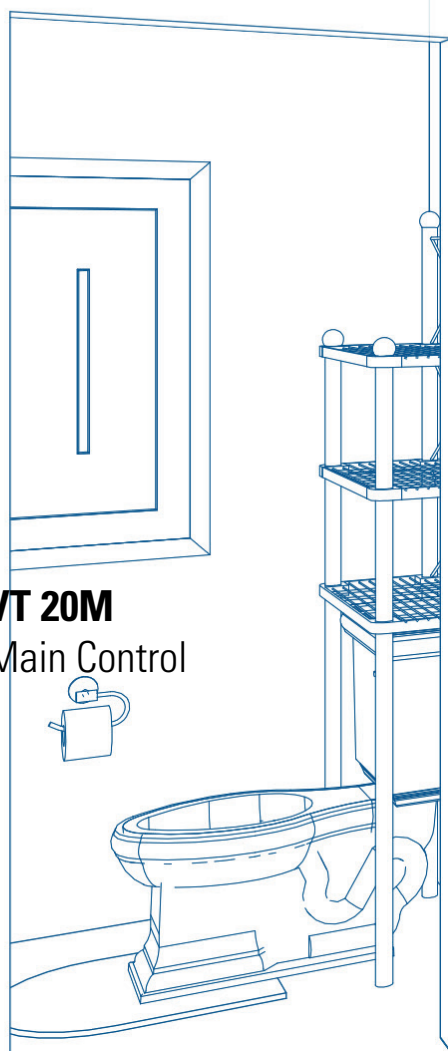
- When touch pad on Auxiliary Control is pressed, a blue LED light illuminates on all units and fan runs at high speed for 20 minutes.
- Use up to three Auxiliary Controls with one Main Control

Item # 45385, Class1

PBL 4
Ceiling Grille with
Dimmable LED Light



VT 20M
Main Control



FQ 80
Quiet Ventilating Fan

UPC # 83737 2



The FQ Series quiet ventilating fans with or without lights provides remarkably quiet, energy efficient ventilation for baths, powder rooms and other areas.

Selection Guide





Premium Bath Fans with Ceiling Grilles

Model	Duct size	Rated power @ 0.2" P _s	Voltage / phase	0.2" P _s	0.4" P _s	CFM per Watt @ 0.2" P _s	ENERGY STAR® Qualified	Lamp	Fan Dimensions		Shipping weight	Item #	7 Year Warranty
	inch	W	V / ~	cfm					W (inch)	inch (H)	lbs		
PB 110	4	21	120 / 1	110	83	5.5	Yes	-	8 3/4	6 1/2	9	40568	Yes
PB 190	6	69	120 / 1	200	152	3.0	Yes	-	11 3/4	6	14	40571	Yes
PB 270-2	4/6	74	120 / 1	270	232	3.75	Yes	-	11 3/4	6	17	40572	Yes
PB 370-2	6	122	120 / 1	370	317	3.1	Yes	-	13 1/8	6 5/8	32	45433	Yes
PBW 110	4	19	120 / 1	112	83	6.3	Yes	-	10 1/4	13	12	412256	Yes


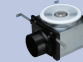
Premium Bath Fans with Ceiling Grilles and Lights



Model	Duct size	Rated power @ 0.2" P _s	Voltage / phase	0.2" P _s	0.4" P _s	CFM per Watt @ 0.2" P _s	ENERGY STAR® Qualified	Lamp	Fan Dimensions		Shipping weight	Item #	7 Year Warranty
	inch	W	V / ~	cfm					inch (W)	inch (H)	lbs		
PB 110L	4	21	120 / 1	110	83	5.5	-	7W (PBB7)	8 3/4	6 1/2	11	44917	Yes
PB 110F-ES PB 110F	4	23	120 / 1	110	83	5.5	Yes -	15W (PBB15ES) 14W (PBB14)	8 3/4	6 1/2	11	47567 40569	Yes
PB 110H	4	23	120 / 1	110	83	5.5	-	50W (PBB50)	8 3/4	6 1/2	10	40570	Yes
PBW 110H	4	23	120 / 1	112	83	6.3	-	50W (PBB50)	10 1/4	13	12	412257	Yes
PBW110F	4	23	120 / 1	112	83	6.3	-	14W (PBB14)	10 1/4	13	12	412259	Yes
PB 270L-2	4/6	78	120 / 1	270	198	3.75	-	7W (PBB7)	11 3/4	6	18	44918	Yes
PB 270F-2ES PB 270F-2	4/6	78	120 / 1	270	232	3.75	Yes -	15W (PBB15ES) 14W (PBB14)	11 3/4	6	19	47568 40573	Yes
PB 270H-2	4/6	78	120 / 1	270	198	3.75	-	50W (PBB50)	11 3/4	6	17	40574	Yes
PB 270FV-2ES PB 270FV-2	4/6	78	120 / 1	270	232	3.75	Yes -	15W (PBB15ES) 14W (PBB14)	11 3/4	6	18	47569 40575	Yes
PB 270LV-2	4/6	78	120 / 1	270	232	3.75	-	7W (PBB7)	11 3/4	6	18	44919	Yes
PB 270HV-2	4/6	78	120 / 1	270	232	3.75	-	50W Halogen (PBB50)	11 3/4	6	18	40576	Yes

FQ Series – Quiet Ventilating Fans

Model	Duct size	Rated power @ 0.2" P _s	Voltage / phase	0.1" P _s	0.2" P _s	0.3" P _s	0.4" P _s	Lamp power (Main/Night)	ENERGY STAR® Qualified	Sones	Shipping weight	Item #	5 Year Warranty
	inch	W	V / ~	cfm				W CFL			lbs		
FQ 80 	4	25	120 / 1	80	68	56	43	-	Yes	<0.3	12	483737	Yes
FQ 80FL 	4	25	120 / 1	80	73	60	47	26/4	-	0.4	14	483739	Yes
FQ 110 	4	30	120/1	110	100	85	70	-	Yes	0.7	13	483738	Yes
FQ 110FL 	4	30	120/1	110	100	85	70	26/4	-	1.3	14	483740	Yes

Expansion Grilles with Housings and Dampers



Model	Duct size	Housing Dimensions	Lamp	Shipping weight	Item #
	inch	inch (L x W x H)		lbs	
PBF 4 ES PBF 4 	4	7 3/16 x 7 3/16 x 5 5/16	15W (PBB15ES) 14W (PBB14)	4	47582 412263
PBH 4 	4	7 3/16 x 7 3/16 x 5 5/16	50W Halogen (PBB50)	4	412262



Model	Duct size	Housing Dimensions	Lamp	Shipping weight	Item #
	inch	inch (L x W x H)		lbs	
PBL 4 	4	7 3/16 x 7 3/16 x 5 5/16	7W (PBB7)	4	44920
PBV 4 PBV 6 	4 6	7 3/16 x 7 3/16 x 5 5/16 8 x 8 x 7 1/8	-	4	412260 412261



The Compact Fluorescent bulb used in Fantech Premium Bath Fans has a color temperature of 2700 Kelvin and CRI of 81.



Need replacement bulbs? Order PBB7 (#44916), PBB14 (#45155), PBB15ES (#47566), PBB50 (#45156).

Other accessories and controls

Model	Duct size	Weight	Item #
	inch	lbs	
FIDT 4" 	4	7	411061
FIDT 6" 	6	9	411062

Model	Duct size	Weight	Item #
	inch	lbs	
FQ FD 	-	2	46975
FC 4 FC 6 	4 6	1	411295 411120

Model	Duct size	Weight	Item #
	inch	lbs	
RC 4 	4	2	411310
RC 6 	6	3	411312

Model	Max Amp	Weight	Item #
	A	lbs	
FLD 60 	20	1	411388
FD 60EM 	20	1	411386

*We recommend to use of the insulated flex duct with our Premium Bathroom Fans.



Distributed Locally by:



Customer Support:

Canada

800.565.3548

CANADAsupport@fantech.net

USA

800.747.1762

USSupport@fantech.net



Send Orders:

Canada

877.747.8116

CANADAorders@fantech.net

USA

800.487.9915

USorders@fantech.net

Fantech reserves the right to modify, at any time and without notice, any or all of its products' features, designs, components and specifications to maintain their technological leadership position. The application rendering presented in this brochure is for visual presentation purposes only. Please, contact a building professional for technical guidance.

