



**Bell & Gossett**  
Parts List CP-825D-PL



---

Replacement Parts for  
**Series 80-SC**  
In-Line Centrifugal  
Split Coupled Pumps

*Engineered for life*

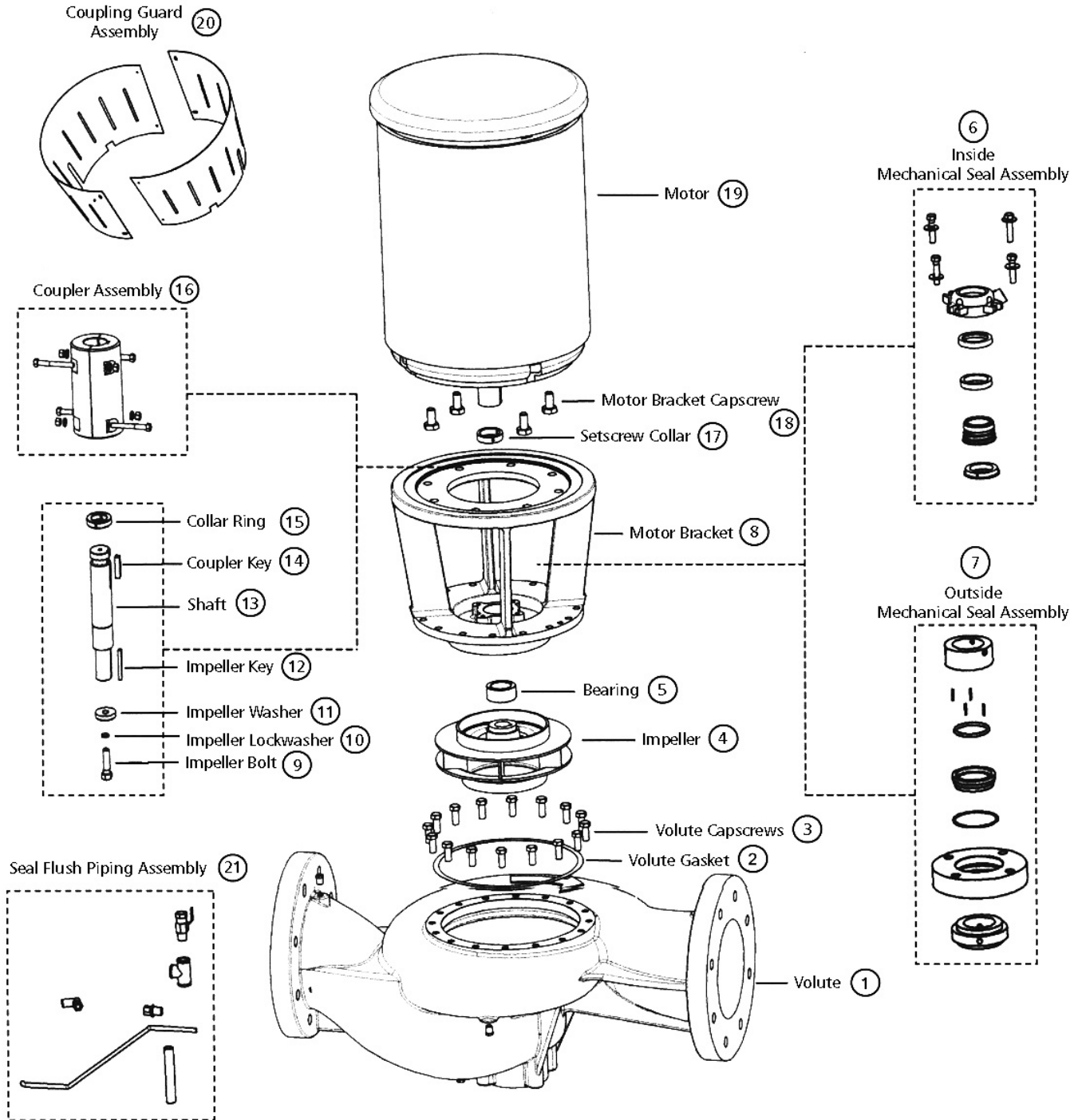
**SERIES 80-SC**



# Index

<b>Description</b>	<b>Page No.</b>
Exploded View .....	3
1½ x 1½ x 7B Parts List .....	4
1½ x 1½ x 9½ Parts List .....	5
2 x 2 x 7 Parts List .....	6
2 x 2 x 9½B Parts List .....	7
2½ x 2½ x 7 Parts List .....	8
2½ x 2½ x 9½B Parts List .....	9
3 x 3 x 7B Parts List .....	10
3 x 3 x 9½B Parts List .....	11
3 x 3 x 11 Parts List .....	12
4 x 4 x 7 Parts List .....	13
4 x 4 x 9½B Parts List .....	14
4 x 4 x 11 Parts List .....	15
5 x 5 x 7 Parts List .....	16
5 x 5 x 9½ Parts List .....	17
6 x 6 x 7 Parts List .....	18
6 x 6 x 9½ Parts List .....	19
6 x 6 x 11 Parts List .....	20
8 x 8 x 9½ Parts List .....	21
8 x 8 x 11 Parts List .....	22
8 x 8 x 13½ Parts List .....	23
10 x 10 x 13½ Parts List .....	24

# Exploded View



## 1 1/2x1 1/2x7B

Item	Description	Quantity	Part Number	
<b>COMMON PARTS</b>				
1	Volute	1	P85304 <sup>1</sup>	
	Pipe Plug	4	P39040	
2	Volute Gasket	1	P57700 <sup>1</sup>	
3	Volute Capscrew	8	P40020	
4	Impeller	1	P50652	
5	Bearing	1	P71378	
9	Impeller Bolt	1	P52350	
10	Impeller Lockwasher	1	J23874	
11	Impeller Washer	1	P46390	
12	Impeller Key	1	P49369	
13	Shaft	1	<b>Standard Seal</b> 440601	<b>Unitized</b> P75212

**MECHANICAL SEAL PARTS**

			<b>Standard Seal (6A)</b>	<b>Unitized (6B)</b>
6	<b>Inside Seal:</b> Mechanical Seal Kit	1	186862	P75221 <sup>1</sup>
6	Cap	1	403510	P75214
6	Capscrew	4	H28100	H28100
6	Gasket	1	P85077	P85077
6	Set Screw	2	P71389	N/A
6	Snap Ring	1	N/A	P75218
6	Seal Spring Retainer	1	P71376	N/A
6	Washer	4	P44580	P44580
7	<b>Outside Seal:</b> Mechanical Seal Kit	1	P75202	
7	Capscrew	4	H52100	
7	Gland	1	P75204	
7	Washer	4	P44580	

**MOTOR BRACKET**

			<b>143-145HP</b>	<b>182-184TC</b>	<b>213-215TC</b>
8A	Motor Bracket (Inside Seal)	1	P70920	P70928	P70928
8B	Motor Bracket (Outside Seal)	1	P70921	P70929	P70929
14	Coupler Key	1	P75182	P75182	P75182
15	Collar Ring (1.125" Shaft)	1	440501 <sup>2</sup>	440501	440501
17	Setscrew Collar	1	N/A	P70995	P70996
17	Set Screw	3	N/A	P71386	P71387
18	Motor Bracket Capscrew	4	DJ0079	P13780	P13780
18	Motor Bracket Hex Nut	4	P52380	N/A	N/A
18	Motor Bracket Lockwasher	4	P16690	N/A	N/A
19	Motor Key	1	N/A	P75189	AC0523
20	Guard	2	P71385	P71385	P71385
20	Guard Screw	4	P86085	P86085	P86085

**COUPLER PARTS**

16	Coupler	1	P70990	P70981	P70982
16	Capscrew	4	DJ0042	DJ0042	P75206
16	Hex Nut	4	P44190	P44190	P44190
16	Lockwasher	4	P44620	P44620	P44620

**FLUSH PIPING ASSEMBLY**

21	Elbow	1	AC0534		
21	Nipple	1	DL0025		
21	Straight Tee	1	P75181		
21	Bushing	1	DF0003		
21	Tube Fitting	1	AC0535		
21	Tubing	2	X42104		
21	Two-way Valve	1	P75255		

1: 250 PSI working pressure pumps require Volute P85305, Volute Capscrew J91757 and Inside Mechanical Seal Kit P75223 (or standard outside unitized seal).

2: 143-145HP Frames require one additional collar ring, part number 440500.

Parts necessary to convert from inside mechanical seal to outside mechanical seal: Remove Group 6A and item 8A. Add Group 7 and item 8B.

To convert from inside mechanical seal to unitized seal: Remove Group 6A and P/N 440601. Add Group 6B and P/N P75212.

To convert from unitized seal to outside mechanical seal: Remove Group 6B and item 8A. Add Group 7 and item 8B.

**Note: Part sheets valid for pumps manufactured after October 2002. Consult factory for pumps manufactured prior to this date.**

**Unitized Seal pumps configured after May 15, 2003.**

1 1/2x1 1/2x9 1/2

Item	Description	Quantity	Part Number	
<b>COMMON PARTS</b>				
1	Volute	1	P85354 <sup>1</sup>	
	Pipe Plug	4	P39040	
2	Volute Gasket	1	P48690	
3	Volute Capscrew	12	P03470 <sup>1</sup>	
4	Impeller	1	P50666	
5	Bearing	1	P71378	
9	Impeller Bolt	1	P52350	
10	Impeller Lockwasher	1	J23874	
11	Impeller Washer	1	P46390	
12	Impeller Key	1	P49369	
13	Shaft	1	<b>Standard Seal</b> 440601	<b>Unitized</b> P75212

**MECHANICAL SEAL PARTS**

			<b>Standard Seal (6A)</b>	<b>Unitized (6B)</b>
6	<b>Inside Seal:</b> Mechanical Seal Kit	1	186862	P75221 <sup>1</sup>
6	Cap	1	403510	P75214
6	Capscrew	4	H28100	H28100
6	Gasket	1	P85077	P85077
6	Set Screw	2	P71389	N/A
6	Snap Ring	1	N/A	P75218
6	Seal Spring Retainer	1	P71376	N/A
6	Washer	4	P44580	P44580
7	<b>Outside Seal:</b> Mechanical Seal Kit	1	P75202	
7	Capscrew	4	H52100	
7	Gland	1	P75204	
7	Washer	4	P44580	

**MOTOR BRACKET**

			<b>143-145HP</b>	<b>182-184TC</b>
8A	Motor Bracket (Inside Seal)	1	P70897	P70905
8B	Motor Bracket (Outside Seal)	1	P70898	P70906
14	Coupler Key	1	P75182	P75182
15	Collar Ring	1	440501 <sup>2</sup>	440501
17	Setscrew Collar	1	N/A	P70995
17	Set Screw	3	N/A	P71386
18	Motor Bracket Capscrew	4	DJ0079	P13780
18	Motor Bracket Hex Nut	4	P52380	N/A
18	Motor Bracket Lockwasher	4	P16690	N/A
19	Motor Key	1	N/A	P75189
20	Coupler Guard	2	P71382	P71382
20	Coupler Guard Screw	4	P86085	P86085

**COUPLER PARTS**

16	Coupler	1	P70990	P70981
16	Capscrew	4	DJ0042	DJ0042
16	Hex Nut	4	P44190	P44190
16	Lockwasher	4	P44620	P44620

**FLUSH PIPING ASSEMBLY**

21	Elbow	1	AC0534	
21	Nipple	1	DL0025	
21	Straight Tee	1	P75181	
21	Bushing	1	DF0003	
21	Tube Fitting	1	AC0535	
21	Tubing	2	X42104	
21	Two-way Valve	1	P75255	

1: 250 PSI working pressure pumps require Volute P85355, Volute Capscrew J91759 and Inside Mechanical Seal Kit P75223 (or standard outside unitized seal).

2: 143-145HP Frames require one additional collar ring, part number 440500.

Parts necessary to convert from inside mechanical seal to outside mechanical seal: Remove Group 6A and item 8A. Add Group 7 and item 8B.

To convert from inside mechanical seal to unitized seal: Remove Group 6A and P/N 440601. Add Group 6B and P/N P75212.

To convert from unitized seal to outside mechanical seal: Remove Group 6B and item 8A. Add Group 7 and item 8B.

**Note: Part sheets valid for pumps manufactured after October 2002. Consult factory for pumps manufactured prior to this date.**

Unitized Seal pumps configured after May 15, 2003.

## 2x2x7

Item	Description	Quantity	Part Number	
<b>COMMON PARTS</b>				
1	Volute	1	P85311 <sup>1</sup>	
	Pipe Plug	4	P39040	
2	Volute Gasket	1	P57700	
3	Volute Capscrew	8	P40020 <sup>1</sup>	
4	Impeller	1	P47950	
5	Bearing	1	P71378	
9	Impeller Bolt	1	P52350	
10	Impeller Lockwasher	1	J23874	
11	Impeller Washer	1	P46390	
12	Impeller Key	1	P49369	
13	Shaft	1	<b>Standard Seal</b> 440601	<b>Unitized</b> P75212

**MECHANICAL SEAL PARTS**

			<b>Standard Seal (6A)</b>	<b>Unitized (6B)</b>
6	<b>Inside Seal:</b> Mechanical Seal Kit	1	186862	P75221 <sup>1</sup>
6	Cap	1	403510	P75214
6	Capscrew	4	H28100	H28100
6	Gasket	1	P85077	P85077
6	Set Screw	2	P71389	N/A
6	Snap Ring	1	N/A	P75218
6	Seal Spring Retainer	1	P71376	N/A
6	Washer	4	P44580	P44580
7	<b>Outside Seal:</b> Mechanical Seal Kit	1	P75202	
7	Capscrew	4	H52100	
7	Gland	1	P75204	
7	Washer	4	P44580	

**MOTOR BRACKET**

143-145HP 182-184TC 213-215TC 254-256TC

			143-145HP	182-184TC	213-215TC	254-256TC
8A	Motor Bracket (Inside Seal)	1	P70920	P70928	P70928	P70928
8B	Motor Bracket (Outside Seal)	1	P70921	P70929	P70929	P70929
14	Coupler Key	1	P75182	P75182	P75182	P75182
15	Collar Ring	1	440501 <sup>2</sup>	440501	440501	440501
17	Setscrew Collar	1	N/A	P70995	P70996	P70997
17	Set Screw	3	N/A	P71386	P71387	P71387
18	Motor Bracket Capscrew	4	DJ0079	P13780	P13780	P13780
18	Motor Bracket Hex Nut	4	P52380	N/A	N/A	N/A
18	Motor Bracket Lockwasher	4	P16690	N/A	N/A	N/A
19	Motor Key	1	N/A	P75189	AC0523	P75190
20	Guard	2	P71385	P71385	P71385	P71385
20	Guard Screw	4	P86085	P86085	P86085	P86085

**COUPLER PARTS**

16	Coupler	1	P70990	P70981	P70982	P70983
16	Capscrew	4	DJ0042	DJ0042	P75206	P75207
16	Hex Nut	4	P44190	P44190	P44190	P44190
16	Lockwasher	4	P44620	P44620	P44620	P44620

**FLUSH PIPING ASSEMBLY**

21	Elbow	1	AC0534
21	Nipple	1	DL0025
21	Straight Tee	1	P75181
21	Bushing	1	DF0003
21	Tube Fitting	1	AC0535
21	Tubing	2	X42104
21	Two-way Valve	1	P75255

1: 250 PSI working pressure pumps require Volute P85312, Volute Capscrew J91757 and Inside Mechanical Seal Kit P75223 (or standard outside unitized seal).

2: 143-145HP Frames require one additional collar ring, part number 440500.

Parts necessary to convert from inside mechanical seal to outside mechanical seal: Remove Group 6A and item 8A. Add Group 7 and item 8B.

To convert from inside mechanical seal to unitized seal: Remove Group 6A and P/N 440601. Add Group 6B and P/N P75212.

To convert from unitized seal to outside mechanical seal: Remove Group 6B and item 8A. Add Group 7 and item 8B.

**Note: Part sheets valid for pumps manufactured after October 2002. Consult factory for pumps manufactured prior to this date.**

Unitized Seal pumps configured after May 15, 2003.

2x2x9<sup>1</sup>/<sub>2</sub>B

Item	Description	Quantity	Part Number	
<b>COMMON PARTS</b>				
1	Volute	1	P85344 <sup>1</sup>	
	Pipe Plug	4	P39040	
2	Volute Gasket	1	P48690	
3	Volute Capscrew	12	P03470 <sup>1</sup>	
4	Impeller	1	P50700	
5	Bearing	1	P71378	
9	Impeller Bolt	1	P52350	
10	Impeller Lockwasher	1	J23874	
11	Impeller Washer	1	P46390	
12	Impeller Key	1	P49369	
13	Shaft	1	<b>Standard Seal</b> 440601	<b>Unitized</b> P75212

**MECHANICAL SEAL PARTS**

			<b>Standard Seal (6A)</b>	<b>Unitized (6B)</b>
6	<b>Inside Seal:</b> Mechanical Seal Kit	1	186862	P75221 <sup>1</sup>
6	Cap	1	403510	P75214
6	Capscrew	4	H28100	H28100
6	Gasket	1	P85077	P85077
6	Set Screw	2	P71389	N/A
6	Snap Ring	1	N/A	P75218
6	Seal Spring Retainer	1	P71376	N/A
6	Washer	4	P44580	P44580
7	<b>Outside Seal:</b> Mechanical Seal Kit	1	P75202	
7	Capscrew	4	H52100	
7	Gland	1	P75204	
7	Washer	4	P44580	

**MOTOR BRACKET**

			<b>143-145HP</b>	<b>182-184TC</b>	<b>213-215TC</b>
8A	Motor Bracket (Inside Seal)	1	P70897	P70905	P70905
8B	Motor Bracket (Outside Seal)	1	P70898	P70906	P70906
14	Coupler Key	1	P75182	P75182	P75182
15	Collar Ring	1	440501 <sup>2</sup>	440501	440501
17	Setscrew Collar	1	N/A	P70995	P70996
17	Set Screw	3	N/A	P71386	P71387
18	Motor Bracket Capscrew	4	DJ0079	P13780	P13780
18	Motor Bracket Hex Nut	4	P52380	N/A	N/A
18	Motor Bracket Lockwasher	4	P16690	N/A	N/A
19	Motor Key	1	N/A	P75189	AC0523
20	Guard	2	P71382	P71382	P71382
20	Guard Screw	4	P86085	P86085	P86085

**COUPLER PARTS**

16	Coupler	1	P70990	P70981	P70982
16	Capscrew	4	DJ0042	DJ0042	P75206
16	Hex Nut	4	P44190	P44190	P44190
16	Lockwasher	4	P44620	P44620	P44620

**FLUSH PIPING ASSEMBLY**

21	Elbow	1	AC0534
21	Nipple	1	DL0025
21	Straight Tee	1	P75181
21	Bushing	1	DF0003
21	Tube Fitting	1	AC0535
21	Tubing	2	X42104
21	Two-way Valve	1	P75255

1: 250 PSI working pressure pumps require Volute P85345, Volute Capscrew J91759 and Inside Mechanical Seal Kit P75223 (or standard outside unitized seal).

2: 143-145HP Frames require one additional collar ring, part number 440500.

Parts necessary to convert from inside mechanical seal to outside mechanical seal: Remove Group 6A and item 8A. Add Group 7 and item 8B.

To convert from inside mechanical seal to unitized seal: Remove Group 6A and P/N 440601. Add Group 6B and P/N P75212.

To convert from unitized seal to outside mechanical seal: Remove Group 6B and item 8A. Add Group 7 and item 8B.

**Note: Part sheets valid for pumps manufactured after October 2002. Consult factory for pumps manufactured prior to this date.**

**Unitized Seal pumps configured after May 15, 2003.**

## 2½x2½x7

Item	Description	Quantity	Part Number	
<b>COMMON PARTS</b>				
1	Volute	1	P85314 <sup>1</sup>	
	Pipe Plug	4	P39040	
2	Volute Gasket	1	P57700	
3	Volute Capscrew	8	P40020 <sup>1</sup>	
4	Impeller	1	P50684	
5	Bearing	1	P71378	
9	Impeller Bolt	1	P52350	
10	Impeller Lockwasher	1	J23874	
11	Impeller Washer	1	P46390	
12	Impeller Key	1	P49369	
13	Shaft	1	<b>Standard Seal</b> 440601	<b>Unitized</b> P75212

**MECHANICAL SEAL PARTS**

			<b>Standard Seal (6A)</b>	<b>Unitized (6B)</b>
6	<b>Inside Seal:</b> Mechanical Seal Kit	1	186862	P75221 <sup>1</sup>
6	Cap	1	403510	P75214
6	Capscrew	4	H28100	H28100
6	Gasket	1	P85077	P85077
6	Set Screw	2	P71389	N/A
6	Snap Ring	1	N/A	P75218
6	Seal Spring Retainer	1	P71376	N/A
6	Washer	4	P44580	P44580
7	<b>Outside Seal:</b> Mechanical Seal Kit	1	P75202	
7	Capscrew	4	H52100	
7	Gland	1	P75204	
7	Washer	4	P44580	

**MOTOR BRACKET**

143-145HP 182-184TC 213-215TC 254-256TC

			143-145HP	182-184TC	213-215TC	254-256TC
8A	Motor Bracket (Inside Seal)	1	P70920	P70928	P70928	P70928
8B	Motor Bracket (Outside Seal)	1	P70921	P70929	P70929	P70929
14	Coupler Key	1	P75182	P75182	P75182	P75182
15	Collar Ring	1	440501 <sup>2</sup>	440501	440501	440501
17	Setscrew Collar	1	N/A	P70995	P70996	P70997
17	Set Screw	3	N/A	P71386	P71387	P71387
18	Motor Bracket Capscrew	4	DJ0079	P13780	P13780	P13780
18	Motor Bracket Hex Nut	4	P52380	N/A	N/A	N/A
18	Motor Bracket Lockwasher	4	P16690	N/A	N/A	N/A
19	Motor Key	1	N/A	P75189	AC0523	P75190
20	Guard	2	P71385	P71385	P71385	P71385
20	Guard Screw	4	P86085	P86085	P86085	P86085

**COUPLER PARTS**

16	Coupler	1	P70990	P70981	P70982	P70983
16	Capscrew	4	DJ0042	DJ0042	P75206	P75207
16	Hex Nut	4	P44190	P44190	P44190	P44190
16	Lockwasher	4	P44620	P44620	P44620	P44620

**FLUSH PIPING ASSEMBLY**

21	Elbow	1	AC0534
21	Nipple	1	DL0025
21	Straight Tee	1	P75181
21	Bushing	1	DF0003
21	Tube Fitting	1	AC0535
21	Tubing	2	X42104
21	Two-way Valve	1	P75255

1: 250 PSI working pressure pumps require Volute P85315, Volute Capscrew J91757 and Inside Mechanical Seal Kit P75223 (or standard outside unitized seal).

2: 143-145HP Frames require one additional collar ring, part number 440500.

Parts necessary to convert from inside mechanical seal to outside mechanical seal: Remove Group 6A and item 8A. Add Group 7 and item 8B.

To convert from inside mechanical seal to unitized seal: Remove Group 6A and P/N 440601. Add Group 6B and P/N P75212.

To convert from unitized seal to outside mechanical seal: Remove Group 6B and item 8A. Add Group 7 and item 8B.

**Note: Part sheets valid for pumps manufactured after October 2002. Consult factory for pumps manufactured prior to this date.**

Unitized Seal pumps configured after May 15, 2003.

## 2 1/2x2 1/2x9 1/2B

Item	Description	Quantity	Part Number	
<b>COMMON PARTS</b>				
1	Volute	1	P85358 <sup>1</sup>	
	Pipe Plug	4	P39040	
2	Volute Gasket	1	P48690	
3	Volute Capscrew	12	P03470 <sup>1</sup>	
4	Impeller	1	P50700	
5	Bearing	1	P71378	
9	Impeller Bolt	1	P52350	
10	Impeller Lockwasher	1	J23874	
11	Impeller Washer	1	P46390	
12	Impeller Key	1	P49369	
13	Shaft	1	<b>Standard Seal</b> 440601	<b>Unitized</b> P75212

**MECHANICAL SEAL PARTS**

			<b>Standard Seal (6A)</b>	<b>Unitized (6B)</b>
6	<b>Inside Seal:</b> Mechanical Seal Kit	1	186862	P75221 <sup>1</sup>
6	Cap	1	403510	P75214
6	Capscrew	4	H28100	H28100
6	Gasket	1	P85077	P85077
6	Set Screw	2	P71389	N/A
6	Snap Ring	1	N/A	P75218
6	Seal Spring Retainer	1	P71376	N/A
6	Washer	4	P44580	P44580
7	<b>Outside Seal:</b> Mechanical Seal Kit	1	P75202	
7	Capscrew	4	H52100	
7	Gland	1	P75204	
7	Washer	4	P44580	

**MOTOR BRACKET**

			<b>143-145HP</b>	<b>182-184TC</b>	<b>213-215TC</b>
8A	Motor Bracket (Inside Seal)	1	P70897	P70905	P70905
8B	Motor Bracket (Outside Seal)	1	P70898	P70906	P70906
14	Coupler Key	1	P75182	P75182	P75182
15	Collar Ring	1	440501 <sup>2</sup>	440501	440501
17	Setscrew Collar	1	N/A	P70995	P70996
17	Set Screw	3	N/A	P71386	P71387
18	Motor Bracket Capscrew	4	DJ0079	P13780	P13780
18	Motor Bracket Hex Nut	4	P52380	N/A	N/A
18	Motor Bracket Lockwasher	4	P16690	N/A	N/A
19	Motor Key	1	N/A	P75189	AC0523
20	Guard	2	P71382	P71382	P71382
20	Guard Screw	4	P86085	P86085	P86085

**COUPLER PARTS**

16	Coupler	1	P70990	P70981	P70982
16	Capscrew	4	DJ0042	DJ0042	P75206
16	Hex Nut	4	P44190	P44190	P44190
16	Lockwasher	4	P44620	P44620	P44620

**FLUSH PIPING ASSEMBLY**

21	Elbow	1	AC0534
21	Nipple	1	DL0025
21	Straight Tee	1	P75181
21	Bushing	1	DF0003
21	Tube Fitting	1	AC0535
21	Tubing	2	X42104
21	Two-way Valve	1	P75255

1: 250 PSI working pressure pumps require Volute P85359, Volute Capscrew J91759 and Inside Mechanical Seal Kit P75223 (or standard outside unitized seal).

2: 143-145HP Frames require one additional collar ring, part number 440500.

Parts necessary to convert from inside mechanical seal to outside mechanical seal: Remove Group 6A and item 8A. Add Group 7 and item 8B.

To convert from inside mechanical seal to unitized seal: Remove Group 6A and P/N 440601. Add Group 6B and P/N P75212.

To convert from unitized seal to outside mechanical seal: Remove Group 6B and item 8A. Add Group 7 and item 8B.

**Note: Part sheets valid for pumps manufactured after October 2002. Consult factory for pumps manufactured prior to this date.**

**Unitized Seal pumps configured after May 15, 2003.**

## 3x3x7B

Item	Description	Quantity	Part Number	
<b>COMMON PARTS</b>				
1	Volute	1	P85324 <sup>1</sup>	
	Pipe Plug	4	P39040	
2	Volute Gasket	1	P57700	
3	Volute Capscrew	8	P40020 <sup>1</sup>	
4	Impeller	1	P50716	
5	Bearing		P71378	
9	Impeller Bolt	1	P52350	
10	Impeller Lockwasher	1	J23874	
11	Impeller Washer	1	P46390	
12	Impeller Key	1	P49369	
13	Shaft	1	<b>Standard Seal</b> 440601	<b>Unitized</b> P75212

**MECHANICAL SEAL PARTS**

			<b>Standard Seal (6A)</b>	<b>Unitized (6B)</b>
6	<b>Inside Seal:</b> Mechanical Seal Kit	1	186862	P75221 <sup>1</sup>
6	Cap	1	403510	P75214
6	Capscrew	4	H28100	H28100
6	Gasket	1	P85077	P85077
6	Set Screw	2	P71389	N/A
6	Snap Ring	1	N/A	P75218
6	Seal Spring Retainer	1	P71376	N/A
6	Washer	4	P44580	P44580
7	<b>Outside Seal:</b> Mechanical Seal Kit	1	P75202	
7	Capscrew	4	H52100	
7	Gland	1	P75204	
7	Washer	4	P44580	

**MOTOR BRACKET**

143-145HP 182-184TC 213-215TC 254-256TC

			143-145HP	182-184TC	213-215TC	254-256TC
8A	Motor Bracket (Inside Seal)	1	P70920	P70928	P70928	P70928
8B	Motor Bracket (Outside Seal)	1	P70921	P70929	P70929	P70929
14	Coupler Key	1	P75182	P75182	P75182	P75182
15	Collar Ring	1	440501 <sup>2</sup>	440501	440501	440501
17	Setscrew Collar	1	N/A	P70995	P70996	P70997
17	Set Screw	3	N/A	P71386	P71387	P71387
18	Motor Bracket Capscrew	4	DJ0079	P13780	P13780	P13780
18	Motor Bracket Hex Nut	4	P52380	N/A	N/A	N/A
18	Motor Bracket Lockwasher	4	P16690	N/A	N/A	N/A
19	Motor Key	1	N/A	P75189	AC0523	P75190
20	Guard	2	P71385	P71385	P71385	P71385
20	Guard Screw	4	P86085	P86085	P86085	P86085

**COUPLER PARTS**

16	Coupler	1	P70990	P70981	P70982	P70983
16	Capscrew	4	DJ0042	DJ0042	P75206	P75207
16	Hex Nut	4	P44190	P44190	P44190	P44190
16	Lockwasher	4	P44620	P44620	P44620	P44620

**FLUSH PIPING ASSEMBLY**

21	Elbow	1	AC0534
21	Nipple	1	DL0025
21	Straight Tee	1	P75181
21	Bushing	1	DF0003
21	Tube Fitting	1	AC0535
21	Tubing	2	X42104
21	Two-way Valve	1	P75255

1: 250 PSI working pressure pumps require Volute P85325, Volute Capscrew J91757 and Inside Mechanical Seal Kit P75223 (or standard outside unitized seal).

2: 143-145HP Frames require one additional collar ring, part number 440500.

Parts necessary to convert from inside mechanical seal to outside mechanical seal: Remove Group 6A and item 8A. Add Group 7 and item 8B.

To convert from inside mechanical seal to unitized seal: Remove Group 6A and P/N 440601. Add Group 6B and P/N P75212.

To convert from unitized seal to outside mechanical seal: Remove Group 6B and item 8A. Add Group 7 and item 8B.

**Note: Part sheets valid for pumps manufactured after October 2002. Consult factory for pumps manufactured prior to this date.**

Unitized Seal pumps configured after May 15, 2003.

3x3x9 $\frac{1}{2}$ B

Item	Description	Quantity	Part Number	
<b>COMMON PARTS</b>				
1	Volute	1	P85364	
	Pipe Plug	4	P39040	
2	Volute Gasket	1	P48690	
3	Volute Capscrew	12	P03470	
4	Impeller	1	P50732	
5	Bearing	1	P71378	
9	Impeller Bolt	1	P52350	
10	Impeller Lockwasher	1	J23874	
11	Impeller Washer	1	P46390	
12	Impeller Key	1	P49369	
13	Shaft	1	<b>Standard Seal</b> 440601	<b>Unitized</b> P75212

**MECHANICAL SEAL PARTS**

			<b>Standard Seal (6A)</b>	<b>Unitized (6B)</b>
6	<b>Inside Seal:</b> Mechanical Seal Kit	1	186862	P75221 <sup>1</sup>
6	Cap	1	403510	P75214
6	Capscrew	4	H28100	H28100
6	Gasket	1	P85077	P85077
6	Set Screw	2	P71389	N/A
6	Snap Ring	1	N/A	P75218
6	Seal Spring Retainer	1	P71376	N/A
6	Washer	4	P44580	P44580
7	<b>Outside Seal:</b> Mechanical Seal Kit	1	P75202	
7	Capscrew	4	H52100	
7	Gland	1	P75204	
7	Washer	4	P44580	

**MOTOR BRACKET**

			<b>143-145HP</b>	<b>182-184TC</b>	<b>213-215TC</b>
8A	Motor Bracket (Inside Seal)	1	P70897	P70905	P70905
8B	Motor Bracket (Outside Seal)	1	P70898	P70906	P70906
14	Coupler Key	1	P75182	P75182	P75182
15	Collar Ring	1	440501 <sup>2</sup>	440501	440501
17	Setscrew Collar	1	N/A	P70995	P70996
17	Set Screw	3	N/A	P71386	P71387
18	Motor Bracket Capscrew	4	DJ0079	P13780	P13780
18	Motor Bracket Hex Nut	4	P52380	N/A	N/A
18	Motor Bracket Lockwasher	4	P16690	N/A	N/A
19	Motor Key	1	N/A	P75189	AC0523
20	Guard	2	P71385	P71382	P71382
20	Guard Screw	4	P86085	P86085	P86085

**COUPLER PARTS**

16	Coupler	1	P70990	P70981	P70982
16	Capscrew	4	DJ0042	DJ0042	P75206
16	Hex Nut	4	P44190	P44190	P44190
16	Lockwasher	4	P44620	P44620	P44620

**FLUSH PIPING ASSEMBLY**

21	Elbow	1	AC0534
21	Nipple	1	DL0025
21	Straight Tee	1	P75181
21	Bushing	1	DF0003
21	Tube Fitting	1	AC0535
21	Tubing	2	X42104
21	Two-way Valve	1	P75255

1: 250 PSI working pressure pumps require Volute P85365, Volute Capscrew J91759 and Inside Mechanical Seal Kit P75223 (or standard outside unitized seal).

2: 143-145HP Frames require one additional collar ring, part number 440500.

Parts necessary to convert from inside mechanical seal to outside mechanical seal: Remove Group 6A and item 8A. Add Group 7 and item 8B.

To convert from inside mechanical seal to unitized seal: Remove Group 6A and P/N 440601. Add Group 6B and P/N P75212.

To convert from unitized seal to outside mechanical seal: Remove Group 6B and item 8A. Add Group 7 and item 8B.

**Note: Part sheets valid for pumps manufactured after October 2002. Consult factory for pumps manufactured prior to this date.**

**Unitized Seal pumps configured after May 15, 2003.**

## 3x3x11

Item	Description	Quantity	Part Number	
<b>COMMON PARTS</b>				
1	Volute	1	P85647 <sup>1</sup>	
	Pipe Plug	4	P39040	
2	Volute Gasket	1	P80765	
3	Volute Capscrew	16	P13780	
4	Impeller	1	P50848	
5	Bearing	1	P71378	
9	Impeller Bolt	1	P52350	
10	Impeller Lockwasher	1	J23874	
11	Impeller Washer	1	P46390	
12	Impeller Key	1	P49369	
13	Shaft	1	<b>Standard Seal</b> 440601	<b>Unitized</b> P75212

**MECHANICAL SEAL PARTS**

			<b>Standard Seal (6A)</b>	<b>Unitized (6B)</b>
<b>Inside Seal:</b>				
6	Mechanical Seal Kit	1	186862	P75221 <sup>1</sup>
6	Cap	1	403510	P75214
6	Capscrew	4	H28100	H28100
6	Gasket	1	P85077	P85077
6	Set Screw	2	P71389	N/A
6	Snap Ring	1	N/A	P75218
6	Seal Spring Retainer	1	P71376	N/A
6	Washer	4	P44580	P44580
<b>Outside Seal:</b>				
7	Mechanical Seal Kit	1	P75202	
7	Capscrew	4	H52100	
7	Gland	1	P75204	
7	Washer	4	P44580	

**MOTOR BRACKET**

			<b>213-215TC</b>	<b>254-256TC</b>
8A	Motor Bracket (Inside Seal)	1	P70893	P70893
8B	Motor Bracket (Outside Seal)	1	P70894	P70894
14	Coupler Key	1	P75182	P75182
15	Collar Ring	1	440501	440501
17	Setscrew Collar	1	P70996	P70997
17	Set Screw	3	P71387	P71387
18	Motor Bracket Capscrew	4	P13780	P13780
19	Motor Key	1	AC0523	P75190
20	Guard	2	P71380	P71380
20	Guard Screw	4	P86085	P86085

**COUPLER PARTS**

16	Coupler	1	P70982	P70983
16	Capscrew	4	P75206	P75207
16	Hex Nut	4	P44190	P44190
16	Lockwasher	4	P44620	P44620

**FLUSH PIPING ASSEMBLY**

21	Elbow	1	AC0534	
21	Nipple	1	DL0025	
21	Straight Tee	1	P75181	
21	Bushing	1	DF0003	
21	Tube Fitting	1	AC0535	
21	Tubing	2	X42104	
21	Two-way Valve	1	P75255	

1: 250 PSI working pressure pumps require Volute P85648 and Inside Mechanical Seal Kit P75223 (or standard outside unitized seal).

Parts necessary to convert from inside mechanical seal to outside mechanical seal: Remove Group 6A and item 8A. Add Group 7 and item 8B.

To convert from inside mechanical seal to unitized seal: Remove Group 6A and P/N 440601. Add Group 6B and P/N P75212.

To convert from unitized seal to outside mechanical seal: Remove Group 6B and item 8A. Add Group 7 and item 8B.

**Note: Part sheets valid for pumps manufactured after October 2002. Consult factory for pumps manufactured prior to this date.**

Unitized Seal pumps configured after May 15, 2003.

## 4x4x7

Item	Description	Quantity	Part Number	
<b>COMMON PARTS</b>				
1	Volute	1	P85331	
	Pipe Plug	4	P39040	
2	Volute Gasket	1	P57700	
3	Volute Capscrew	8	P40020	
4	Impeller	1	P85418	
5	Bearing	1	P71378	
9	Impeller Bolt	1	P52350	
10	Impeller Lockwasher	1	J23874	
11	Impeller Washer	1	P46390	
12	Impeller Key	1	P49369	
13	Shaft	1	<b>Standard Seal</b> 440601	<b>Unitized</b> P75212

**MECHANICAL SEAL PARTS**

			<b>Standard Seal (6A)</b>	<b>Unitized (6B)</b>
6	<b>Inside Seal:</b> Mechanical Seal Kit	1	186862	P75221 <sup>1</sup>
6	Cap	1	403510	P75214
6	Capscrew	4	H28100	H28100
6	Gasket	1	P85077	P85077
6	Set Screw	2	P71389	N/A
6	Snap Ring	1	N/A	P75218
6	Seal Spring Retainer	1	P71376	N/A
6	Washer	4	P44580	P44580
7	<b>Outside Seal:</b> Mechanical Seal Kit	1	P75202	
7	Capscrew	4	H52100	
7	Gland	1	P75204	
7	Washer	4	P44580	

**MOTOR BRACKET**

			<b>143-145HP</b>	<b>182-184TC</b>
8A	Motor Bracket	1	P70920	P70928
8B	Motor Bracket (Outside Seal)	1	P70921	P70929
14	Coupler Key	1	P75182	P75182
15	Collar Ring	1	440501 <sup>2</sup>	440501
17	Setscrew Collar	1	N/A	P70995
17	Set Screw	3	N/A	P71386
18	Motor Bracket Capscrew	4	DJ0079	P13780
18	Motor Bracket Hex Nut	4	P52380	N/A
18	Motor Bracket Lockwasher	4	P16690	N/A
19	Motor Key	1	N/A	P75189
20	Guard	2	P71385	P71385
20	Guard Screw	4	P86085	P86085

**COUPLER PARTS**

16	Coupler	1	P70990	P70981
16	Capscrew	4	DJ0042	DJ0042
16	Hex Nut	4	P44190	P44190
16	Lockwasher	4	P44620	P44620

**FLUSH PIPING ASSEMBLY**

21	Elbow	1	AC0534	
21	Nipple	1	DL0025	
21	Straight Tee	1	P75181	
21	Bushing	1	DF0003	
21	Tube Fitting	1	AC0535	
21	Tubing	2	X42104	
21	Two-way Valve	1	P75255	

1: 250 PSI working pressure pumps require Volute P85332, Volute Capscrew J91757 and Inside Mechanical Seal Kit P75223 (or standard outside unitized seal).

2: 143-145HP Frames require one additional collar ring, part number 440500.

Parts necessary to convert from inside mechanical seal to outside mechanical seal: Remove Group 6A and item 8A. Add Group 7 and item 8B.

To convert from inside mechanical seal to unitized seal: Remove Group 6A and P/N 440601. Add Group 6B and P/N P75212.

To convert from unitized seal to outside mechanical seal: Remove Group 6B and item 8A. Add Group 7 and item 8B.

**Note: Part sheets valid for pumps manufactured after October 2002. Consult factory for pumps manufactured prior to this date.**

Unitized Seal pumps configured after May 15, 2003.

4x4x9 $\frac{1}{2}$ 

Item	Description	Quantity	Part Number	
<b>COMMON PARTS</b>				
1	Volute	1	P85371 <sup>1</sup>	
	Pipe Plug	4	P39040	
2	Volute Gasket	1	P48690	
3	Volute Capscrew	12	P03470 <sup>1</sup>	
4	Impeller	1	P50550	
5	Bearing	1	P71378	
9	Impeller Bolt	1	P52350	
10	Impeller Lockwasher	1	J23874	
11	Impeller Washer	1	P46390	
12	Impeller Key	1	P49369	
13	Shaft	1	<b>Standard Seal</b> 440601	<b>Unitized</b> P75212

**MECHANICAL SEAL PARTS**

			<b>Standard Seal (6A)</b>	<b>Unitized (6B)</b>
<b>Inside Seal:</b>				
6	Mechanical Seal Kit	1	186862	P75221 <sup>1</sup>
6	Cap	1	403510	P75214
6	Capscrew	4	H28100	H28100
6	Gasket	1	P85077	P85077
6	Set Screw	2	P71389	N/A
6	Snap Ring	1	N/A	P75218
6	Seal Spring Retainer	1	P71376	N/A
6	Washer	4	P44580	P44580
<b>Outside Seal:</b>				
7	Mechanical Seal Kit	1	P75202	
7	Capscrew	4	H52100	
7	Gland	1	P75204	
7	Washer	4	P44580	

**MOTOR BRACKET**

			<b>182-184TC</b>	<b>213-215TC</b>	<b>254-256TC</b>
8A	Motor Bracket (Inside Seal)	1	P70905	P70905	P70905
8B	Motor Bracket (Outside Seal)	1	P70906	P70906	P70906
14	Coupler Key	1	P75182	P75182	P75182
15	Collar Ring	1	440501	440501	440501
17	Setscrew Collar	1	P70995	P70996	P70997
17	Set Screw	3	P71386	P71387	P71387
18	Motor Bracket Capscrew	4	P13780	P13780	P13780
19	Motor Key	1	P75189	AC0523	P75190
20	Guard	2	P71382	P71382	P71382
20	Guard Screw	4	P86085	P86085	P86085

**COUPLER PARTS**

16	Coupler	1	P70981	P70982	P70983
16	Capscrew	4	DJ0042	P75206	P75207
16	Hex Nut	4	P44190	P44190	P44190
16	Lockwasher	4	P44620	P44620	P44620

**FLUSH PIPING ASSEMBLY**

21	Elbow	1	AC0534		
21	Nipple	1	DL0025		
21	Straight Tee	1	P75181		
21	Bushing	1	DF0003		
21	Tube Fitting	1	AC0535		
21	Tubing	2	X42104		
21	Two-way Valve	1	P75255		

1: 250 PSI working pressure pumps require Volute P85372, Volute Capscrew J91759 and Inside Mechanical Seal Kit P75223 (or standard outside unitized seal).

Parts necessary to convert from inside mechanical seal to outside mechanical seal: Remove Group 6A and item 8A. Add Group 7 and item 8B.

To convert from inside mechanical seal to unitized seal: Remove Group 6A and P/N 440601. Add Group 6B and P/N P75212.

To convert from unitized seal to outside mechanical seal: Remove Group 6B and item 8A. Add Group 7 and item 8B.

**Note: Part sheets valid for pumps manufactured after October 2002. Consult factory for pumps manufactured prior to this date.**

Unitized Seal pumps configured after May 15, 2003.

## 4x4x11

Item	Description	Quantity	Part Number						
<b>COMMON PARTS</b>									
1 2 3 4 5 9 10 11 12  13	Volute Pipe Plug Volute Gasket Volute Capscrew Impeller Bearing Impeller Bolt Impeller Lockwasher Impeller Washer Impeller Key  Shaft	1 2 1 16 1 1 1 1 1 1 1 1	<b>213-256TC</b>		<b>284-286TC</b>				
			P85628 <sup>1</sup>		P85628 <sup>2</sup>				
			P39040		P39040				
			P80765		P80765				
			P13780		P13780				
			P50852		P50852				
			P71378		P71378				
			P52350		P13800				
			J23874		J23875				
			P46390		P51250				
			P49369		P49372				
					<b>Std. Seal</b>	<b>Unitized</b>	<b>Std. Seal</b>	<b>Unitized</b>	
					<b>213-256TC</b>	<b>213-256TC</b>	<b>284-286TC</b>	<b>284-286TC</b>	
		440601	P75212	440605	P75213				
<b>MECHANICAL SEAL PARTS</b>									
6 6 6 6 6 6 6 6	<b>Inside Seal:</b> Mechanical Seal Kit Cap Capscrew Gasket Set Screw Snap Ring Seal Spring Retainer Washer	1 1 4 1 2 1 1 1 4	<b>Std. Seal (6A)</b>	<b>Unitized (6B)</b>	<b>Std. Seal (6A)</b>	<b>Unitized (6B)</b>			
			<b>213-256TC</b>	<b>213-256TC</b>	<b>284-286TC</b>	<b>284-286TC</b>			
			186862	P75221 <sup>1</sup>	186543	P75222 <sup>2</sup>			
			403510	P75214	403520	P75216			
			H28100	H28100	H28100	H28100			
			P85077	P85077	P75201	P75201			
			P71389	N/A	P71390	N/A			
			N/A	P75218	N/A	P75219			
			P71376	N/A	P71377	N/A			
			P44580	P44580	P44580	P44580			
			7 7 7 7	<b>Outside Seal:</b> Mechanical Seal Kit Capscrew Gland Washer	1 4 1 4	<b>213-256TC</b>		<b>284-286TC</b>	
						P75202		P75203	
						H52100		H52100	
P75204		P75205							
P44580		P44580							
<b>MOTOR BRACKET</b>									
8A 8B 14 15 17 17 18 19 20 20	Motor Bracket (Inside Seal) Motor Bracket (Outside Seal) Coupler Key Collar Ring Setscrew Collar Set Screw Motor Bracket Capscrew Motor Key Guard Guard Screw	1 1 1 1 1 3 4 1 2 4	<b>213-215TC</b>	<b>254-256TC</b>	<b>284-286TC</b>				
			P70893	P70893	P70937				
			P70894	P70894	P70938				
			P75182	P75182	P75183				
			440501	440501	440502				
			P70996	P70997	P71373				
			P71387	P71387	P71388				
			P13780	P13780	P13780				
			AC0523	P75190	P75191				
			P71380	P71380	P71381				
			P86085	P86085	P86085				
<b>COUPLER PARTS</b>									
16 16 16 16	Coupler Capscrew Hex Nut Lockwasher	1 4 4 4	P70982	P70983	P70988				
			P75206	P75207	P44250				
			P44190	P44190	P52380				
			P44620	P44620	P16690				
<b>FLUSH PIPING ASSEMBLY</b>									
21 21 21 21 21 21 21	Elbow Nipple Straight Tee Bushing Tube Fitting Tubing Two-way Valve	1 1 1 1 1 2 1	AC0534						
			DL0025						
			P75181						
			DF0003						
			AC0535						
			X42104						
			P75255						

1: 250 PSI working pressure pumps require Volute P85629 and Inside Mechanical Seal Kit P75223 (or standard outside unitized seal).

2: 250 PSI working pressure pumps require Volute P85629 and Inside Mechanical Seal Kit P75224 (or standard outside unitized seal).

Parts necessary to convert from inside mechanical seal to outside mechanical seal: Remove Group 6A and item 8A. Add Group 7 and item 8B.

To convert from inside mechanical seal to unitized seal: For frame 213-256TC, remove Group 6A and P/N 440601; add Group 6B and P/N P75212.

For frame 284-286TC, remove Group 6A and P/N 440605; add Group 6B and P/N P75213.

To convert from unitized seal to outside mechanical seal: Remove Group 6B and item 8A. Add Group 7 and item 8B.

**Note: Part sheets valid for pumps manufactured after October 2002. Consult factory for pumps manufactured prior to this date.**

Unitized Seal pumps configured after May 15, 2003.

## 5x5x7

Item	Description	Quantity	Part Number	
<b>COMMON PARTS</b>				
1	Volute	1	P85334 <sup>1</sup>	
	Pipe Plug	1	P39040	
2	Volute Gasket	1	P57700	
3	Volute Capscrew	1	P40020 <sup>1</sup>	
4	Impeller	1	P50762	
5	Bearing	1	P71378	
9	Impeller Bolt	4	P52350	
10	Impeller Lockwasher	1	J23874	
11	Impeller Washer	8	P46390	
12	Impeller Key	1	P49369	
13	Shaft	1	<b>Standard Seal</b> 440601	<b>Unitized</b> P75212

**MECHANICAL SEAL PARTS**

	Inside Seal:		Standard Seal (6A)	Unitized (6B)
6	Mechanical Seal Kit	1	186862	P75221 <sup>1</sup>
6	Cap	1	403510	P75214
6	Capscrew	4	H28100	H28100
6	Gasket	1	P85077	P85077
6	Set Screw	2	P71389	N/A
6	Snap Ring	2	N/A	P75218
6	Seal Spring Retainer	1	P71376	N/A
6	Washer	4	P44580	P44580
<b>Outside Seal:</b>				
7	Mechanical Seal Kit	1	P75202	
7	Capscrew	4	H52100	
7	Gland	1	P75204	
7	Washer	4	P44580	

**MOTOR BRACKET**

			143-145HP	182-184TC	213-215TC
8A	Motor Bracket (Inside Seal)	1	P70920	P70928	P70928
8B	Motor Bracket (Outside Seal)	1	P70921	P70929	P70929
14	Coupler Key	1	P75182	P75182	P75182
15	Collar Ring	1	440501 <sup>2</sup>	440501	440501
17	Setscrew Collar	1	N/A	P70995	P70996
17	Set Screw	3	N/A	P71386	P71387
18	Motor Bracket Capscrew	4	DJ0079	P13780	P13780
18	Motor Bracket Hex Nut	4	P52380	N/A	N/A
18	Motor Bracket Lockwasher	4	P16690	N/A	N/A
19	Motor Key	1	N/A	P75189	AC0523
20	Guard	2	P71385	P71385	P71385
20	Guard Screw	4	P86085	P86085	P86085

**COUPLER PARTS**

16	Coupler	1	P70990	P70981	P70982
16	Capscrew	4	DJ0042	DJ0042	P75206
16	Hex Nut	4	P44190	P44190	P44190
16	Lockwasher	4	P44620	P44620	P44620

**FLUSH PIPING ASSEMBLY**

21	Elbow	1	AC0534		
21	Nipple	1	DL0025		
21	Straight Tee	1	P75181		
21	Bushing	1	DF0003		
21	Tube Fitting	1	AC0535		
21	Tubing	2	X42104		
21	Two-way Valve	1	P75255		

1: 250 PSI working pressure pumps require Volute P85335, Volute Capscrew J91757 and Inside Mechanical Seal Kit P75223 (or standard outside unitized seal).

2: 143-145HP Frames require one additional collar ring, part number 440500.

Parts necessary to convert from inside mechanical seal to outside mechanical seal: Remove Group 6A and item 8A. Add Group 7 and item 8B.

To convert from inside mechanical seal to unitized seal: Remove Group 6A and P/N 440601. Add Group 6B and P/N P75212.

To convert from unitized seal to outside mechanical seal: Remove Group 6B and item 8A. Add Group 7 and item 8B.

**Note: Part sheets valid for pumps manufactured after October 2002. Consult factory for pumps manufactured prior to this date.**

**Unitized Seal pumps configured after May 15, 2003.**

## 5x5x9½

Item	Description	Quantity	Part Number	
<b>COMMON PARTS</b>				
1	Volute	1	P85368 <sup>1</sup>	
	Pipe Plug	4	P39040	
2	Volute Gasket	1	P48690	
3	Volute Capscrew	12	P03470 <sup>1</sup>	
4	Impeller	1	P50748	
5	Bearing	1	P71378	
9	Impeller Bolt	1	P52350	
10	Impeller Lockwasher	1	J23874	
11	Impeller Washer	1	P46390	
12	Impeller Key	1	P49369	
13	Shaft	1	<b>Standard Seal</b> 440601	<b>Unitized</b> P75212

**MECHANICAL SEAL PARTS**

			<b>Standard Seal (6A)</b>	<b>Unitized (6B)</b>
6	<b>Inside Seal:</b> Mechanical Seal Kit	1	186862	P75221
6	Cap	1	403510	P75214
6	Capscrew	4	H28100	H28100
6	Gasket	1	P85077	P85077
6	Set Screw	2	P71389	N/A
6	Snap Ring	1	N/A	P75218
6	Seal Spring Retainer	1	P71376	N/A
6	Washer	4	P44580	P44580
7	<b>Outside Seal:</b> Mechanical Seal Kit	1	P75202	
7	Capscrew	4	H52100	
7	Gland	1	P75204	
7	Washer	4	P44580	

**MOTOR BRACKET**

			<b>213-215TC</b>	<b>254-256TC</b>
8A	Motor Bracket (Inside Seal)	1	P70905	P70905
8B	Motor Bracket (Outside Seal)	1	P70906	P70906
14	Coupler Key	1	P75182	P75182
15	Collar Ring	1	440501	440501
17	Setscrew Collar	1	P70996	P70997
17	Set Screw	3	P71387	P71387
18	Motor Bracket Capscrew	4	P13780	P13780
19	Motor Key	1	AC0523	P75190
20	Guard	2	P71382	P71382
20	Guard Screw	4	P86085	P86085

**COUPLER PARTS**

16	Coupler	1	P70982	P70983
16	Capscrew	4	P75206	P75207
16	Hex Nut	4	P44190	P44190
16	Lockwasher	4	P44620	P44620

**FLUSH PIPING ASSEMBLY**

21	Elbow	1	AC0534
21	Nipple	1	DL0025
21	Straight Tee	1	P75181
21	Bushing	1	DF0003
21	Tube Fitting	1	AC0535
21	Tubing	2	X42104
21	Two-way Valve	1	P75255

1: 250 PSI working pressure pumps require Volute P85369, Volute Capscrew J91759 and Inside Mechanical Seal Kit P75223 (or standard outside unitized seal).

Parts necessary to convert from inside mechanical seal to outside mechanical seal: Remove Group 6A and item 8A. Add Group 7 and item 8B.

To convert from inside mechanical seal to unitized seal: Remove Group 6A and P/N 440601. Add Group 6B and P/N P75212.

To convert from unitized seal to outside mechanical seal: Remove Group 6B and item 8A. Add Group 7 and item 8B.

**Note: Part sheets valid for pumps manufactured after October 2002. Consult factory for pumps manufactured prior to this date.**

**Unitized Seal pumps configured after May 15, 2003.**

## 6x6x7

Item	Description	Quantity	Part Number	
<b>COMMON PARTS</b>				
1	Volute	1	P85337 <sup>1</sup>	
	Pipe Plug	4	P39040	
2	Volute Gasket	1	P57700	
3	Volute Capscrew	8	P40020	
4	Impeller	1	P50802	
5	Bearing	1	P71378	
9	Impeller Bolt	1	P52350	
10	Impeller Lockwasher	1	J23874	
11	Impeller Washer	1	P46390	
12	Impeller Key	1	P49369	
13	Shaft	1	<b>Standard Seal</b> 440601	<b>Unitized</b> P75212

**MECHANICAL SEAL PARTS**

	Inside Seal:		Standard Seal (6A)	Unitized (6B)
6	Mechanical Seal Kit	1	186862	P75221 <sup>1</sup>
6	Cap	1	403510	P75214
6	Capscrew	4	H28100	H28100
6	Gasket	1	P85077	P85077
6	Set Screw	2	P71389	N/A
6	Snap Ring	1	N/A	P75218
6	Seal Spring Retainer	1	P71376	N/A
6	Washer	4	P44580	P44580
<b>Outside Seal:</b>				
7	Mechanical Seal Kit	1	P75202	
7	Capscrew	4	H52100	
7	Gland	1	P75204	
7	Washer	4	P44580	

**MOTOR BRACKET**

			143-145HP	182-184TC	213-215TC
8A	Motor Bracket (Inside Seal)	1	P70920	P70928	P70928
8B	Motor Bracket (Outside Seal)	1	P70921	P70929	P70929
14	Coupler Key	1	P75182	P75182	P75182
15	Collar Ring	1	440501 <sup>2</sup>	440501	440501
17	Setscrew Collar	1	N/A	P70995	P70996
17	Set Screw	3	N/A	P71386	P71387
18	Motor Bracket Capscrew	4	DJ0079	P13780	P13780
18	Motor Bracket Hex Nut	4	P52380	N/A	N/A
18	Motor Bracket Lockwasher	4	P16690	N/A	N/A
19	Motor Key	1	N/A	P75189	AC0523
20	Guard	2	P71385	P71385	P71385
20	Guard Screw	4	P86085	P86085	P86085

**COUPLER PARTS**

16	Coupler	1	P70990	P70981	P70982
16	Capscrew	4	DJ0042	DJ0042	P75206
16	Hex Nut	4	P44190	P44190	P44190
16	Lockwasher	4	P44620	P44620	P44620

**FLUSH PIPING ASSEMBLY**

21	Elbow	1	AC0534		
21	Nipple	1	DL0025		
21	Straight Tee	1	P75181		
21	Bushing	1	DF0003		
21	Tube Fitting	1	AC0535		
21	Tubing	2	X42104		
21	Two-way Valve	1	P75255		

1: 250 PSI working pressure pumps require Volute P85338, Volute Capscrew J91757 and Inside Mechanical Seal Kit P75223 (or standard outside unitized seal).

2: 143-145HP Frames require one additional collar ring, part number 440500.

Parts necessary to convert from inside mechanical seal to outside mechanical seal: Remove Group 6A and item 8A. Add Group 7 and item 8B.

To convert from inside mechanical seal to unitized seal: Remove Group 6A and P/N 440601. Add Group 6B and P/N P75212.

To convert from unitized seal to outside mechanical seal: Remove Group 6B and item 8A. Add Group 7 and item 8B.

**Note: Part sheets valid for pumps manufactured after October 2002. Consult factory for pumps manufactured prior to this date.**

**Unitized Seal pumps configured after May 15, 2003.**

6x6x9 $\frac{1}{2}$ 

Item	Description	Quantity	Part Number				
<b>COMMON PARTS</b>							
1	Volute	1	<b>213-256TC</b>		<b>284-286TC</b>		
	Pipe Plug	4	P70857 <sup>1</sup>		P70857 <sup>2</sup>		
	Volute Gasket	1	P39040		P39040		
	Volute Capscrew	12	P48690		P48690		
	Impeller	1	P03470 <sup>1</sup>		P03470 <sup>2</sup>		
	Bearing	1	P50822		P50832		
	Impeller Bolt	1	P71378		P71379		
	Impeller Lockwasher	1	P52350		P13800		
	Impeller Washer	1	J23874		J23875		
	Impeller Key	1	P46390		P51250		
				P49369		P49372	
	13	Shaft	1	<b>Std. Seal</b> <b>213-256TC</b>	<b>Unitized</b> <b>213-256TC</b>	<b>Std. Seal</b> <b>284-286TC</b>	<b>Unitized</b> <b>284-286TC</b>
			440601	P75212	440605	P75213	
<b>MECHANICAL SEAL PARTS</b>							
	<b>Inside Seal:</b>		<b>Std. Seal (6A)</b>	<b>Unitized (6B)</b>	<b>Std. Seal (6A)</b>	<b>Unitized (6B)</b>	
			<b>213-256TC</b>	<b>213-256TC</b>	<b>284-286TC</b>	<b>284-286TC</b>	
6	Mechanical Seal Kit	1	186862	P75221 <sup>1</sup>	186543	P75222 <sup>2</sup>	
6	Cap	1	403510	P75214	403520	P75216	
6	Capscrew	4	H28100	H28100	H28100	H28100	
6	Gasket	1	P85077	P85077	P75201	P75201	
6	Set Screw	2	P71389	N/A	P71390	N/A	
6	Snap Ring	1	N/A	P75218	N/A	P75219	
6	Seal Spring Retainer	1	P71376	N/A	P71377	N/A	
6	Washer	4	P44580	P44580	P44580	P44580	
	<b>Outside Seal:</b>		<b>213-256TC</b>		<b>284-286TC</b>		
7	Mechanical Seal Kit	1	P75202		P75203		
7	Capscrew	4	H52100		H52100		
7	Gland	1	P75204		P75205		
7	Washer	4	P44580		P44580		
<b>MOTOR BRACKET</b>							
			<b>213-215TC</b>	<b>254-256TC</b>	<b>284-286TC</b>		
8A	Motor Bracket (Inside Seal)	1	P70905	P70905	P70914		
8B	Motor Bracket (Outside Seal)	1	P70906	P70906	P70915		
14	Coupler Key	1	P75182	P75182	P75183		
15	Collar Ring	1	440501	440501	440502		
17	Setscrew Collar	1	P70996	P70997	P71373		
17	Set Screw	3	P71387	P71387	P71388		
18	Motor Bracket Capscrew	4	P13780	P13780	P13780		
19	Motor Key	1	AC0523	P75190	P75191		
20	Guard	2	P71382	P71382	P71384		
20	Guard Screw	4	P86085	P86085	P86085		
<b>COUPLER PARTS</b>							
16	Coupler	1	P70982	P70983	P70988		
16	Capscrew	4	P75206	P75207	P44250		
16	Hex Nut	4	P44190	P44190	P52380		
16	Lockwasher	4	P44620	P44620	P16690		
<b>FLUSH PIPING ASSEMBLY</b>							
21	Elbow	1	AC0534				
21	Nipple	1	DL0025				
21	Straight Tee	1	P75181				
21	Bushing	1	DF0003				
21	Tube Fitting	1	AC0535				
21	Tubing	2	X42104				
21	Two-way Valve	1	P75255				

1: 250 PSI working pressure pumps require Volute P70858, Volute Capscrew J91759 and Inside Mechanical Seal Kit P75223 (or standard outside unitized seal).

2: 250 PSI working pressure pumps require Volute P70858, Volute Capscrew J91759 and Inside Mechanical Seal Kit P75224 (or standard outside unitized seal).

Parts necessary to convert from inside mechanical seal to outside mechanical seal: Remove Group 6A and item 8A. Add Group 7 and item 8B.

To convert from inside mechanical seal to unitized seal: For frame 213-256TC, remove Group 6A and P/N 440601; add Group 6B and P/N P75212.

For frame 284-286TC, remove Group 6A and P/N 440605; add Group 6B and P/N P75213.

To convert from unitized seal to outside mechanical seal: Remove Group 6B and item 8A. Add Group 7 and item 8B.

**Note: Part sheets valid for pumps manufactured after October 2002. Consult factory for pumps manufactured prior to this date.**

Unitized Seal pumps configured after May 15, 2003.

## 6x6x11

Item	Description	Quantity	Part Number	
<b>COMMON PARTS</b>				
1	Volute	1	P70852	
	Pipe Plug	4	P39040	
2	Volute Gasket	1	P80765	
3	Volute Capscrew	16	P13780	
4	Impeller	1	P50872	
5	Bearing	1	P71379	
9	Impeller Bolt	1	P13800	
10	Impeller Lockwasher	1	J23875	
11	Impeller Washer	1	P51250	
12	Impeller Key	1	P49372	
13	Shaft	1	<b>Standard Seal</b> 440605	<b>Unitized</b> P75213

**MECHANICAL SEAL PARTS**

			<b>Standard Seal (6A)</b>	<b>Unitized (6B)</b>
<b>Inside Seal:</b>				
6	Mechanical Seal Kit	1	186543	P75222 <sup>1</sup>
6	Cap	1	403520	P75216
6	Capscrew	4	H28100	H28100
6	Gasket	1	P75201	P75201
6	Set Screw	2	P71390	N/A
6	Snap Ring	1	N/A	P75219
6	Seal Spring Retainer	1	P71377	N/A
6	Washer	4	P44580	P44580
<b>Outside Seal:</b>				
7	Mechanical Seal Kit	1	P75203	
7	Capscrew	4	H52100	
7	Gland	1	P75205	
7	Washer	4	P44580	

**MOTOR BRACKET**

			<b>284-286TC</b>	<b>324-326TSC</b>
8A	Motor Bracket (Inside Seal)	1	P70937	P70939
8B	Motor Bracket (Outside Seal)	1	P70938	P70940
14	Coupler Key	1	P75183	P75183
15	Collar Ring	1	440502	440502
17	Setscrew Collar	1	P71373	P71373
17	Set Screw	3	P71388	P71388
18	Motor Bracket Capscrew	4	P13780	DJ0132
19	Motor Key	1	P75191	P75192
20	Guard	2	P71381	P71381
20	Guard Screw	4	P86085	P86085

**COUPLER PARTS**

16	Coupler	1	P70988	P70989
16	Capscrew	4	P44250	P44250
16	Hex Nut	4	P52380	P52380
16	Lockwasher	4	P16690	P16690

**FLUSH PIPING ASSEMBLY**

21	Elbow	1	AC0534	
21	Nipple	1	DL0025	
21	Straight Tee	1	P75181	
21	Bushing	1	DF0003	
21	Tube Fitting	1	AC0535	
21	Tubing	2	X42104	
21	Two-way Valve	1	P75255	

1: 250 PSI working pressure pumps require Volute P70854 and Inside Mechanical Seal Kit P75224 (or standard outside unitized seal).

Parts necessary to convert from inside mechanical seal to outside mechanical seal: Remove Group 6A and item 8A. Add Group 7 and item 8B.

To convert from inside mechanical seal to unitized seal: Remove Group 6A and P/N 440605. Add Group 6B and P/N P75213.

To convert from unitized seal to outside mechanical seal: Remove Group 6B and item 8A. Add Group 7 and item 8B.

Note: Part sheets valid for pumps manufactured after October 2002. Consult factory for pumps manufactured prior to this date.

Unitized Seal pumps configured after May 15, 2003.

8x8x9 $\frac{1}{2}$ 

Item	Description	Quantity	Part Number	
<b>COMMON PARTS</b>				
1	Volute	1	P70847 <sup>1</sup>	
	Pipe Plug	4	P39040	
2	Volute Gasket	1	P48690	
3	Volute Capscrew	12	P03470 <sup>1</sup>	
4	Impeller	1	P50842	
5	Bearing	1	P71379	
9	Impeller Bolt	1	P13800	
10	Impeller Lockwasher	1	J23875	
11	Impeller Washer	1	P51250	
12	Impeller Key	1	P49372	
13	Shaft	1	<b>Standard Seal</b> 440605	<b>Unitized</b> P75213

**MECHANICAL SEAL PARTS**

			<b>Standard Seal (6A)</b>	<b>Unitized (6B)</b>
6	<b>Inside Seal:</b> Mechanical Seal Kit	1	186543	P75222 <sup>1</sup>
6	Cap	1	403520	P75216
6	Capscrew	4	H28100	H28100
6	Gasket	1	P75201	P75201
6	Set Screw	2	P71377	N/A
6	Snap Ring	1	N/A	P75219
6	Seal Spring Retainer	1	P71390	N/A
6	Washer	4	P44580	P44580
7	<b>Outside Seal:</b> Mechanical Seal Kit	1	P75203	
7	Capscrew	4	H52100	
7	Gland	1	P75205	
7	Washer	4	P44580	

**MOTOR BRACKET**

			<b>284-286TC</b>	<b>324-326TSC</b>
8A	Motor Bracket (Inside Seal)	1	P70914	P70916
8B	Motor Bracket (Outside Seal)	1	P70915	P70917
14	Coupler Key	1	P75183	P75192
15	Collar Ring	1	440502	440502
17	Setscrew Collar	1	P71373	P71373
17	Set Screw	3	P71388	P71388
18	Motor Bracket Capscrew	4	P13780	DJ0132
19	Motor Key	1	P75191	P75183
20	Guard	2	P71384	P71384
20	Guard Screw	4	P86085	P86085

**COUPLER PARTS**

16	Coupler	1	P70988	P70989
16	Capscrew	4	P44250	P44250
16	Hex Nut	4	P52380	P52380
16	Lockwasher	4	P16690	P16690

**FLUSH PIPING ASSEMBLY**

21	Elbow	1	AC0534
21	Nipple	1	DL0025
21	Straight Tee	1	P75181
21	Bushing	1	DF0003
21	Tube Fitting	1	AC0535
21	Tubing	2	X42104
21	Two-way Valve	1	P75255

1: 250 PSI working pressure pumps require Volute P70848, Volute Capscrew J91759 and Inside Mechanical Seal Kit P75224 (or standard outside unitized seal).

Parts necessary to convert from inside mechanical seal to outside mechanical seal: Remove Group 6A and item 8A. Add Group 7 and item 8B.

To convert from inside mechanical seal to unitized seal: Remove Group 6A and P/N 440605. Add Group 6B and P/N P75213.

To convert from unitized seal to outside mechanical seal: Remove Group 6B and item 8A. Add Group 7 and item 8B.

**Note: Part sheets valid for pumps manufactured after October 2002. Consult factory for pumps manufactured prior to this date.**

**Unitized Seal pumps configured after May 15, 2003.**

## 8x8x11

Item	Description	Quantity	Part Number	
<b>COMMON PARTS</b>				
1	Volute	1	P86076 <sup>1</sup>	
	Pipe Plug	4	P39040	
2	Volute Gasket	1	P80765	
3	Volute Capscrew	16	P13780	
4	Impeller	1	P50876	
5	Bearing	1	P71379	
9	Impeller Bolt	1	P13800	
10	Impeller Lockwasher	1	J23875	
11	Impeller Washer	1	P51250	
12	Impeller Key	1	P49372	
13	Shaft	1	<b>Standard Seal</b> 440605	<b>Unitized</b> P75213

**MECHANICAL SEAL PARTS**

			<b>Standard Seal (6A)</b>	<b>Unitized (6B)</b>
<b>Inside Seal:</b>				
6	Mechanical Seal Kit	1	186543	P75222 <sup>1</sup>
6	Cap	1	403520	P75216
6	Capscrew	4	H28100	H28100
6	Gasket	1	P75201	P75201
6	Set Screw	2	P71377	N/A
6	Snap Ring	1	N/A	P75219
6	Seal Spring Retainer	1	P71390	N/A
6	Washer	4	P44580	P44580
<b>Outside Seal:</b>				
7	Mechanical Seal Kit	1	P75203	
7	Capscrew	4	H52100	
7	Gland	1	P75205	
7	Washer	4	P44580	

**MOTOR BRACKET**

			<b>284-286TC</b>	<b>324-326TSC</b>	<b>364TSC</b>
8A	Motor Bracket (Inside Seal)	1	P70937	P70939	P70939
8B	Motor Bracket (Outside Seal)	1	P70938	P70940	P70940
14	Coupler Key	1	P75183	P75192	P75192
15	Collar Ring	1	440502	440502	440502
17	Setscrew Collar	1	P71373	P71373	P71373
17	Set Screw	3	P71388	P71388	P71388
18	Motor Bracket Capscrew	4 / 8	P13780	DJ0132	DJ0132
19	Motor Key	1	P75191	P75183	P75183
20	Guard	2	P71381	P71381	P71381
20	Guard Screw	4	P86085	P86085	P86085

**COUPLER PARTS**

16	Coupler	1	P70988	P70989	P70989
16	Capscrew	4	P44250	P44250	P44250
16	Hex Nut	4	P52380	P52380	P52380
16	Lockwasher	4	P16690	P16690	P16690

**FLUSH PIPING ASSEMBLY**

21	Elbow	1	AC0534		
21	Nipple	1	DL0025		
21	Straight Tee	1	P75181		
21	Bushing	1	DF0003		
21	Tube Fitting	1	AC0535		
21	Tubing	2	X42104		
21	Two-way Valve	1	P75255		

1: 250 PSI working pressure pumps require Volute P70861 and Inside Mechanical Seal Kit P75224 (or standard outside unitized seal).

Parts necessary to convert from inside mechanical seal to outside mechanical seal: Remove Group 6A and item 8A. Add Group 7 and item 8B.

To convert from inside mechanical seal to unitized seal: Remove Group 6A and P/N 440605. Add Group 6B and P/N P75213.

To convert from unitized seal to outside mechanical seal: Remove Group 6B and item 8A. Add Group 7 and item 8B.

Note: Part sheets valid for pumps manufactured after October 2002. Consult factory for pumps manufactured prior to this date.

Unitized Seal pumps configured after May 15, 2003.

## 8x8x13½

Item	Description	Quantity	Part Number				
<b>COMMON PARTS</b>			(for TC motors: 1½" shaft)			(for HP motors: 1½" and 2½" shaft)	
			<b>284-286TC</b>	<b>324-326TSC</b>	<b>364TSC</b>	<b>365HP</b>	<b>404-445HP</b>
1	Volute	1		P86236 <sup>1</sup>		P86236 <sup>2</sup>	
	Pipe Plug	2		P39040		P39040	
	Pipe Plug	2		H47900		H47900	
2	Volute Gasket	1		P80767		P80767	
3	Volute Capscrew	16		DJ0113		DJ0113	
4	Impeller	1		P86235		P86234	
5	Bearing	1		P71379		P75385	
9	Impeller Bolt	1		P13800		J92019	
10	Impeller Lockwasher	1		J23875		J23876	
11	Impeller Washer	1		P51250		P46384	
12	Impeller Key	1		P49372		P75406	
13	Shaft	1		P75213		P75384	
<b>MECHANICAL SEAL PARTS</b>							
	<b>Inside Seal:</b>						
6	Mechanical Seal Kit	1		P75222 <sup>1</sup>		P75396 <sup>2</sup>	
6	Cap	1		P75216		P75386	
6	Capscrew	4		DJ0080		DJ0080	
6	Gasket	1		P75201		P75412	
6	Snap Ring	1		P75219		P75404	
6	Washer	4		P44580		P44580	
	<b>Outside Seal:</b>						
7	Mechanical Seal Kit	1		P75203		P75400	
7	Capscrew	4		H52100		H52100	
7	Gland	1		P75205		P75413	
7	Washer	4		P44580		P44580	
<b>MOTOR BRACKET</b>			<b>284-286TC</b>	<b>324-326TSC</b>	<b>364TSC</b>	<b>365HP</b>	<b>404-445HP</b>
8A	Motor Bracket (Inside Seal)	1	P75247	P75250	P75250	P86111	P86111
8B	Motor Bracket (Outside Seal)	1	P75249	P75251	P75251	P86113	P86113
14	Coupler Key	1	P75183	P75183	P75183	P75407	P75407
15	Collar Ring - Pump Shaft	1	440502	440502	440502	P75388	P75388
15	Collar Ring - Motor	1	NA	NA	NA	440502	P75388
17	Setscrew Collar	1	P71373	P71373	P71373	NA	NA
17	Set Screw	3	P71388	P71388	P71388	NA	NA
18	Motor Bracket Capscrew	4 / 8	P13780 (4)	DJ0132 (4)	DJ0132 (8)	P37900 (4)	P37900 (4)
18A	Motor Bracket Lock Washer	4	NA	NA	NA	P46420 (4)	P46420 (4)
18B	Motor Bracket Nut	4	NA	NA	NA	F15600 (4)	F15600 (4)
19	Motor Key	1	P75191	P75192	P75192	NA	NA
20	Guard	2	P75410	P75410	P75410	P75411	P75411
20	Guard Screw	4	P86085	P86085	P86085	P86085	P86085
<b>COUPLER PARTS</b>							
16	Coupler	1		P70988		P75391	P75392
16	Capscrew	4 / 6		P44250 (4)			DJ0083 (6)
16	Hex Nut	4 / 6		P52380 (4)			P52380 (6)
16	Lockwasher	4 / 6		P16690 (4)			P16690 (6)
<b>FLUSH PIPING ASSEMBLY</b>							
21	Elbow	1		S41800			DF0521
21	Bushing	1		DF0009			DF0009
21	Nipple	1		DL0028			DL0028
21	Straight Tee	1		P75181			P75181
21	Bushing	1		DF0003			DF0003
21	Tube Fitting	1		S42940			S42940
21	Tubing	2		X42101			X42101
21	Two-way Valve	1		P75255			P75255

1: 250 PSI working pressure pumps require Volute P86238 and Inside Mechanical Seal Kit P75224 (or standard outside unitized seal).

2: 250 PSI working pressure pumps require Volute P86238 and Inside Mechanical Seal Kit P75397 (or standard outside unitized seal).

Parts necessary to convert from unitized inside mechanical seal to outside mechanical seal: Remove Group 6 and item 8A. Add Group 7 and item 8B.

Note: This pump size introduced in 2005.

## 10x10x13½

Item	Description	Quantity	Part Number				
<b>COMMON PARTS</b>			(for TC motors: 1½" shaft)			(for HP motors: 1½" and 2½" shaft)	
			<b>284-286TC</b>	<b>324-326TSC</b>	<b>364TSC</b>	<b>365HP</b>	<b>404-445HP</b>
1	Volute	1	P86130			P86130	
	Pipe Plug	5	P39040			P39040	
2	Volute Gasket	1	P80767			P80767	
3	Volute Capscrew	16	P13780			P13780	
4	Impeller	1	P75383			P75382	
5	Bearing	1	P71379			P75385	
9	Impeller Bolt	1	P13800			J92019	
10	Impeller Lockwasher	1	J23875			J23876	
11	Impeller Washer	1	P51251			P46385	
12	Impeller Key	1	P49372			P75406	
13	Shaft	1	P75213			P75384	

**MECHANICAL SEAL PARTS**

6	<b>Inside Seal:</b> Mechanical Seal Kit	1	P75222 <sup>1</sup>			P75396 <sup>2</sup>	
6	Cap	1	P75216			P75386	
6	Capscrew	4	DJ0080			DJ0080	
6	Gasket	1	P75201			P75412	
6	Snap Ring	1	P75219			P75404	
6	Washer	4	P44580			P44580	
7	<b>Outside Seal:</b> Mechanical Seal Kit	1	P75203			P75400	
7	Capscrew	4	H52100			H52100	
7	Gland	1	P75205			P75413	
7	Washer	4	P44580			P44580	

**MOTOR BRACKET**

			<b>284-286TC</b>	<b>324-326TSC</b>	<b>364TSC</b>	<b>365HP</b>	<b>404-445HP</b>
8A	Motor Bracket (Inside Seal)	1	P75247	P75250	P75250	P86111	P86111
8B	Motor Bracket (Outside Seal)	1	P75249	P75251	P75251	P86113	P86113
14	Coupler Key	1	P75183	P75183	P75183	P75407	P75407
15	Collar Ring - Pump Shaft	1	440502	440502	440502	P75388	P75388
15	Collar Ring - Motor	1	NA	NA	NA	440502	P75388
17	Setscrew Collar	1	P71373	P71373	P71373	NA	NA
17	Set Screw	3	P71388	P71388	P71388	NA	NA
18	Motor Bracket Capscrew	4 / 8	P13780 (4)	DJ0132 (4)	DJ0132 (8)	P37900 (4)	P37900 (4)
18A	Motor Bracket Lock Washer	4	NA	NA	NA	P46420 (4)	P46420 (4)
18B	Motor Bracket Nut	4	NA	NA	NA	F15600 (4)	F15600 (4)
19	Motor Key	1	P75191	P75192	P75192	NA	NA
20	Guard	2	P75410	P75410	P75410	P75411	P75411
20	Guard Screw	4	P86085	P86085	P86085	P86085	P86085

**COUPLER PARTS**

16	Coupler	1	P70988			P75391	P75392
16	Capscrew	4 / 6	P44250 (4)			DJ0083 (6)	
16	Hex Nut	4 / 6	P52380 (4)			P52380 (6)	
16	Lockwasher	4 / 6	P16690 (4)			P16690 (6)	

**FLUSH PIPING ASSEMBLY**

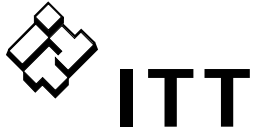
21	Elbow	1	S41800			DF0521	
21	Nipple	1	DL0028			DL0028	
21	Straight Tee	1	P75181			P75181	
21	Bushing	1	DF0003			DF0003	
21	Tube Fitting	1	S42940			S42940	
21	Tubing	2	X42101			X42101	
21	Two-way Valve	1	P75255			P75255	

1: 250 PSI working pressure pumps require Volute P86132, Volute Capscrew DJ0113 and Inside Mechanical Seal Kit P75224 (or standard outside unitized seal).

2: 250 PSI working pressure pumps require Volute P86132 and Inside Mechanical Seal Kit P75397 (or standard outside unitized seal).

Parts necessary to convert from unitized inside mechanical seal to outside mechanical seal: Remove Group 6 and item 8A. Add Group 7 and item 8B.

Note: This pump size introduced in 2004.



© Copyright © 2009 ITT Corporation  
Printed in U.S.A. 9-09

THE ITT ENGINEERED BLOCKS SYMBOL AND  
ENGINEERED FOR LIFE ARE REGISTERED  
TRADEMARKS OF ITT MANUFACTURING  
ENTERPRISES, INC.

**ITT**  
8200 N. Austin Avenue  
Morton Grove, IL 60053  
Phone: (847) 966-3700  
Fax: (847) 966-9052  
[www.bellgossett.com](http://www.bellgossett.com)

