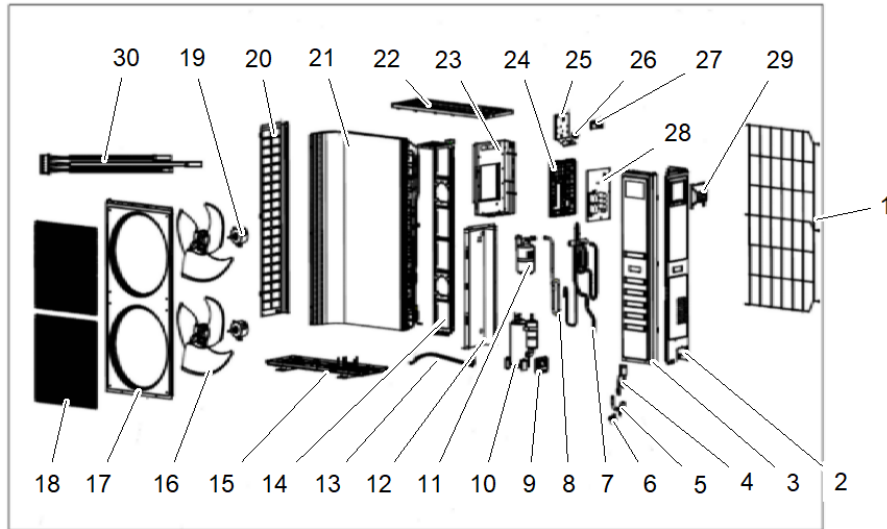


Part No.	Reference No.	Quantity	Description
0000189273~S	*		General Assembly
0000189272~S	*		Model Number Description

Part No.	Reference No.	Quantity	Description
0000042629~P	*		General Assembly



All orderable Service Parts are identified for this product.
Parts that are not identified, will not be available to order.
This is a typical illustration. The unit in the field may not appear exactly as shown.

Part No.	Reference No.	Quantity	Description
CBT01951	*	1	CABINET; BOTTOM SHIPPING CARTON
CBT01952	*	1	CABINET; SHIPPING CARTON
INS03949	*	1	INSULATION; BOTTOM PACKAGING FOAM
INS03951	*	1	INSULATION; UPPER RIGHT PACKAGING FOAM
INS03952	*	1	INSULATION; UPPER LEFT PACKAGING FOAM
GRL02404	1	1	GRILLE;
PNL39789	2	1	PANEL; ACCESS
COV06295	3	1	COVER; FRONT RIGHT
VAL20705	4	1	VALVE; EXV ASSEMBLY
VAL20708	5	1	VALVE; GAS SERVICE
VAL20709	6	1	VALVE; LIQUID SERVICE
VAL20711	7	1	VALVE; SWITCHOVER ASSEMBLY
TUB16247	8	1	TUBE; SUCTION ASSEMBLY
BRK05483	9	1	BRACKET; VALVE
COM14143	10	1	COMPRESSOR; ASM
ACC00385	11	1	ACCUMULATOR;
PLT07460	12	1	PLATE; PARTITION
HTR72145	13	1	HEATER; BASE PAN HEATER ASSEMBLY
BRK05484	14	1	BRACKET; MOTOR
PAN04514	15	1	PAN; BASE
FAN06779	16	2	FAN; FAN
COV06298	17	1	COVER; FRONT
GRL02393	18	2	GRILLE; FAN
FAN06784	19	2	FAN; MOTOR
COV06299	20	1	COVER; LEFT SIDE
COL32354	21	1	COIL; CONDENSER
COV06300	22	1	COVER; TOP
PLT07462	23	1	PLATE; CONTROL BOX MOUNTING PLATE ASSEMBLY
BOX04618	24	1	BOX; PLASTIC CONTROL
PLT07463	25	1	PLATE; TERMINAL BLOCK MOUNTING
TER01927	26	1	TERMINAL; BLOCK
CNT09445	27	1	CONTROL; OUTDOOR MAIN PCB
CNT09446	28	1	CONTROL; OUTDOOR PCB ASSEMBLY
COV06302	29	1	COVER; CONTROL
SEN03193	30	1	SENSOR; OUTDOOR TEMP. ASSEMBLY

Part No.	Reference No.	Quantity	Description
0000042607~P	*		Model Number Description

MODEL NUMBER DESCRIPTION

75015602

REV
A

Example Model Number:
E4HL5018A1000AA
1 - - - 5 - - - - 10 - - - - 15

Digit 1 – Brand Name

A = RunTru by Trane
E = RunTru

Digit 2 - Refrigerant Type

4 = R410A

Digit 3,4 – Product Family

AC = Air Condition
HP = Heat Pump
HL = Side Discharge

Digit 5 – Nominal Efficiency Rating

4 = 14.3 SEER2
5 = 15.2 SEER2

Digit 6,7,8 – Nominal Capacity

BTU/HOUR x 1000

Digit 9 – Major Development Sequence

Primary Design / Form Series
Alphabetic Character "A" through "Z"

Digit 10 – Electric Power Supply Characteristics

1 = 200-230V/1PH/60HZ or 208-230V/1PH/60HZ

Digit 11,12,13 – Secondary Function

000 = No Secondary Function

Digit 14,15 – Minor Development Sequence/Series Design Change

Alphabetic Character "A" through "Z"

