



fantech[®]
a systemair company

Filter Selection

Residential & Light Commercial HRV/ERVs



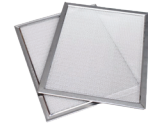


TABLE OF CONTENTS

HERO Filters.....	4
ATMO Filters	4
FIT Filters.....	5
Light Commercial (SHR/SER).....	5
Filter Maintenance.....	6

Filter Accessories List

Filters are available as an optional add-on

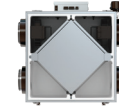


Model		MERV 3	MERV 8, 2 pcs	MERV13, 2 pcs	MERV8 Bulk Pack (25 pcs)
Product No.	Product	Filter Item No. ¹	Filter Item No. ¹	Filter Item No. ¹	Filter Item No.
99400	HERO 120H	428519	428525	-	415502
99401	HERO 150H	428520	428526	482548	415501
463253	HERO 150H EC	428520	428526	428548	415501
99402	HERO 200H	428521	428527	428549	415500
463254	HERO 250H-EC	428521	428527	428549	415500



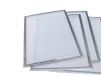
Model		MERV 3	MERV 8	MERV13
Product No.	Product	Filter Item No. ¹	Filter Item No. ¹	Filter Item No. ¹
463888	ATMO 150H	463939	463943	463944
463890	ATMO 150E	463939	463943	463944
463889	ATMO 200H	463940	463945	463946
463891	ATMO 200E	463940	463945	463946
466333	ATMO 300E-EC	463940	463945	463946

¹ 2 pieces



Model		MERV 3	MERV 8	MERV13
Product No.	Product	Filter Item No. ¹	Filter Item No. ¹	Filter Item No. ¹
463400	FIT 70E	405116	414921	-
463408	FIT 80E	498509	484397	484396
479401	FIT 80E-M	498509	484397	484396
479402	FIT 80E-HC	498509	484397	484396
479403	FIT 80E-M-HC	498509	484397	484396
479404	FIT 80E-D	498509	484397	484396
479405	FIT 80E-D-M	498509	484397	484396
479406	FIT 80E-D-HC	498509	484397	484396
479407	FIT 80E-D-M-HC	498509	484397	484396
463401	FIT 120E	422580	461674	461675
463405	FIT 120E-M	422580	461674	461675
463409	FIT 120E-HC	422580	461674	461675
463412	FIT 120E-M-HC	422580	461674	461675
463403	FIT 120E-D	422580	461674	461675
463406	FIT 120E-D-M	422580	461674	461675
463410	FIT 120E-D-HC	422580	461674	461675
463413	FIT 120E-D-M-HC	422580	461674	461675
463404	FIT 120E-D-EC	422580	461674	461675
463407	FIT 120E-D-EC-M	422580	461674	461675
463411	FIT 120E-D-EC-HC	422580	461674	461675
463414	FIT 120E-D-EC-M-HC	422580	461674	461675

Light Commercial



Model		MERV 3	MERV 6	MERV 8	MERV 13
Product No.	Product	Filter Item No.	Filter Item No.	Filter Item No.	Filter Item No.
99210/99266	SHR 450/SER 450	40328	414911	414928	414935
99268/99276	SHR 700/SER 700	40482	40458	414933	414936
99270	SHR 800	40482	40458	414933	414936
99277	SER 1100	40459	40460	414934	414937
99272	SHR 1200	40459	40460	414934	414937
99278	SER 1300	40459	40460	414934	414937
99274	SHR 1400	40459	40460	414934	414937

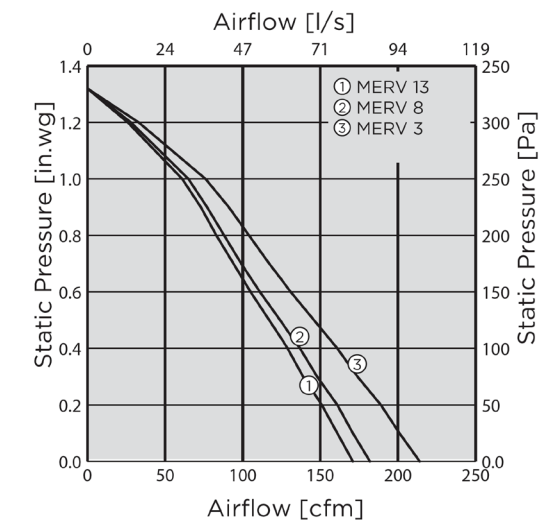
Filter Maintenance Recommendations

Performance, price and maintenance are considerations when making a filter recommendation. These can be impacted by location (ex. dusty, dry climates), if there are pets in the home and the age of the system.

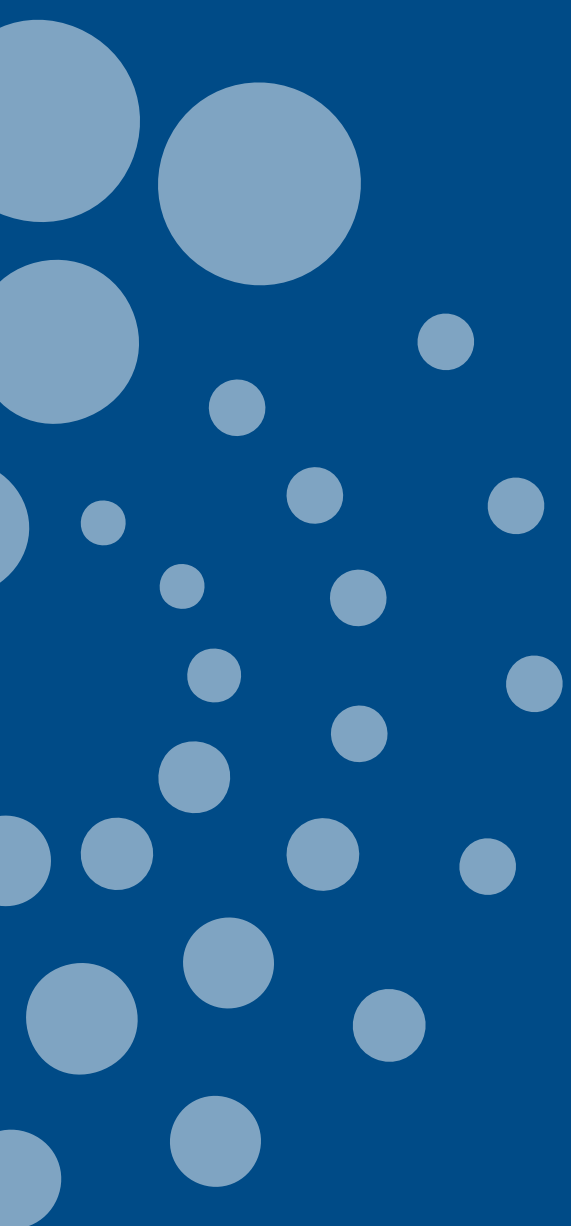
Typical maintenance recommendations:

- **Check Filters:** Check filters every 3 months. If visibly dirty or clogged, wash them—except for MERV 8 & 13 filters in HERO products, which should be replaced as they can't be washed due to their cardboard material. Replace any damaged filters.
- **Follow Manufacturer's Instructions:** Follow the specific instructions provided by the manufacturer of your HVAC system or the filter itself. They may have additional recommendations or specifications for maintenance.
- **Keep Records:** Keep a record of when you install a new filter and when you plan to replace it next. This help you remember when it's time for maintenance.
- **Proper Installation:** Ensure the filter is installed correctly, with the airflow arrow pointing in the direction of the airflow (usually marked on the filter).
- **Clean Surrounding Area:** Before installing a new filter, clean the area around the filter slot to prevent debris from entering the HVAC system.
- **Consider Environmental Factors:** If you have pets, smoke indoors, or live in a particularly dusty area, you might need to replace your filter more frequently.
- **Inspect Seals:** Check the seals around the filter to ensure there are no gaps, as this can allow unfiltered air to bypass the filter.
- **Upgrade if Necessary:** If you find that your MERV 3 filter isn't providing adequate filtration for your needs (e.g., if you have allergies or respiratory issues), consider upgrading to a higher MERV-rated filter. However, ensure that your HVAC system can handle the increased resistance that higher MERV filters create.

Upgrading from a MERV 3 to a MERV 8 typically reduces airflow by 10-15%, while a MERV 13 can reduce it by 15-20%. The following chart illustrates ATMO performance with different filters:



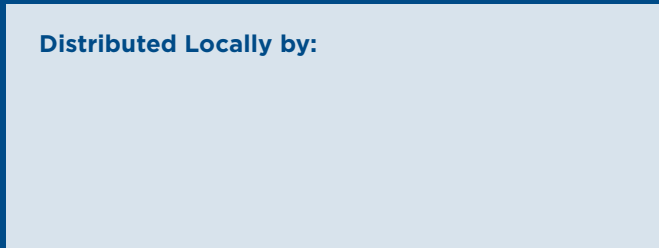
For detailed airflow performance with specific MERV filters, visit our website.



Customer Support:

USA 800.747.1762 • USsupport@fantech.net
CANADA 800.565.3548 • CANADAsupport@fantech.net

Distributed Locally by:



Systemair Inc. reserves the right to modify, at any time and without notice, any or all of its products' features, designs, components and specifications to maintain their technological leadership position. Please, contact a professional for technical guidance.

Zephyr Creative • April 2025 • E2014