
FXZQ**TBVJU Ceiling Mount Cassette w/ Decoration Panel

BYFQ60C3W2W
FXZQ05TBVJU
FXZQ07TBVJU
FXZQ09TBVJU
FXZQ12TBVJU
FXZQ15TBVJU
FXZQ18TBVJU



This manual is to be used by qualified technicians only.

Important Information

Index

Functional Parts List	3
Illustration and Parts	4 - 11

Views shown are for parts illustrations only, not servicing procedures.

Text Codes:

AR - As Required

NA - Not Available

NS - Not Shown

00000000 - See Note

QTY - Quantity Example (QTY 3) (If Quantity not shown, Quantity = 1)

M - Model Example (M1) (If M Code not shown, then part is used on all Models)

Expanded Model Nomenclature:

Example
M1 - Model#1
M2 - Model#2
M3 - Model#3

Daikin Comfort Technologies Manufacturing , L.P. is not responsible for personal injury or property damage resulting from improper service. Review all service information before beginning repairs.

Warranty service must be performed by an authorized technician, using authorized factory parts. If service is required after the warranty expires, Daikin Comfort Technologies Manufacturing , L.P. also recommends contacting an authorized technician and using authorized factory parts.

Daikin Comfort Technologies Manufacturing , L.P. reserves the right to discontinue, or change at any time, specifications or designs without notice or without incurring obligations.

For assistance within the U.S.A. contact:
Homeowner Support
Daikin Comfort Technologies Manufacturing , L.P.
19001 Kermier Road
Waller, Texas 77484
855-770-5678-Telephone
713-863-2382-Facsimile

For assistance outside the U.S.A. contact:
International Division
Daikin Comfort Technologies Manufacturing , L.P.
19001 Kermier Road
Waller, Texas 77484
713-861-2500-Telephone
713-863-2382-Facsimile

Functional Parts

Part

No: Description:

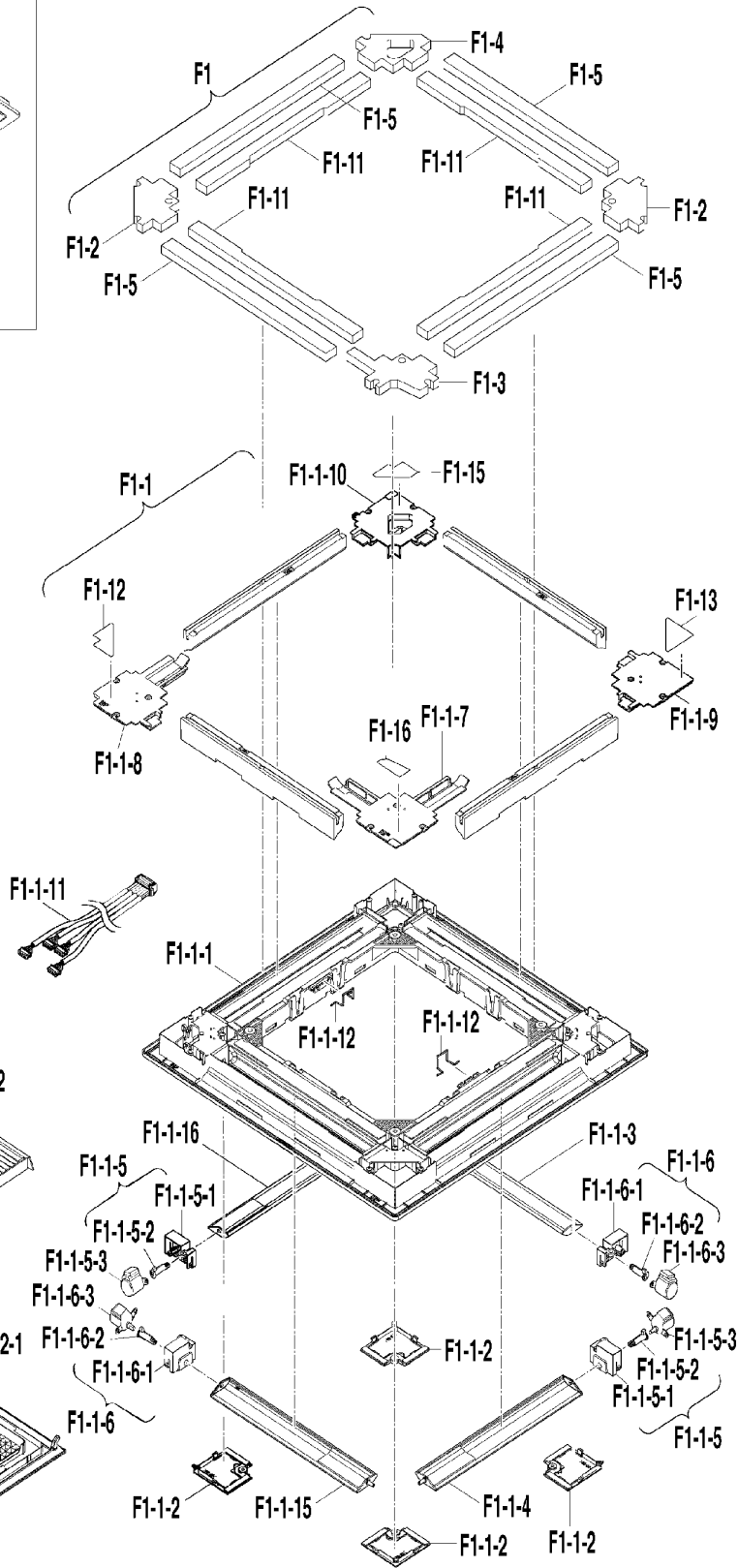
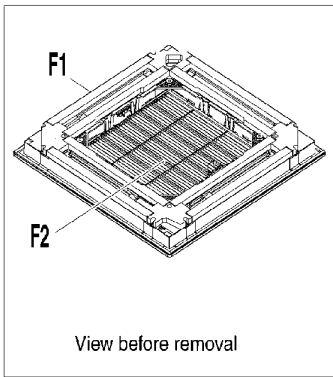
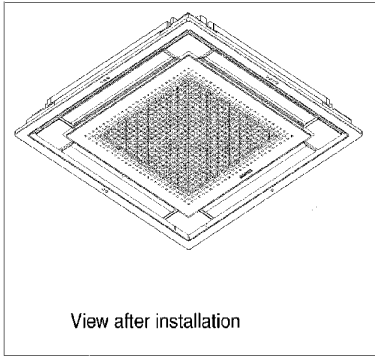
066964J	CAPACITY SETTING ADAPTOR (M4)
066963J	CAPACITY SETTING ADAPTOR (M3)
065340J	CAPACITY SETTING ADAPTOR (M6)
065331J	CAPACITY SETTING ADAPTOR (M5)
064060J	CAPACITY SETTING ADAPTOR (M7)
2534240	FAN MOTOR (M2, M3, M4, M5, M6, M7)
2545345	FLOAT SWITCH ASSY. (M2, M3, M4, M5, M6, M7)
2546029	PRINTED CIRCUIT BOARD ASSY. (CONTROL) (M2)
2541255	PRINTED CIRCUIT BOARD ASSY. (CONTROL) (M3, M4, M5, M6, M7)
151065J	STEPPING MOTOR (M1)
2543287	THERMISTOR (AIR) (M2, M3, M4, M5, M6, M7)
2530511	THERMISTOR (COIL) (M2, M3, M4, M5, M6, M7)
2530209	THERMISTOR (COIL) (M2, M3, M4, M5, M6, M7)

Expanded Model Nomenclature

M1 - BYFQ60C3W2W
M2 - FXZQ05TBVJU
M3 - FXZQ07TBVJU
M4 - FXZQ09TBVJU
M5 - FXZQ12TBVJU
M6 - FXZQ15TBVJU
M7 - FXZQ18TBVJU

DECORATIVE PANEL

BYFQ60C3W2W



Reference #	Drawing #
1	F1
2	F1-1
3	F1-1-1
4	F1-1-2
5	F1-1-3
6	F1-1-4
7	F1-1-5
8	F1-1-5-1
9	F1-1-5-2
10	F1-1-5-3
11	F1-1-6
12	F1-1-6-1
13	F1-1-6-2
14	F1-1-6-3
15	F1-1-7
16	F1-1-8
17	F1-1-9
18	F1-1-10
19	F1-1-11
20	F1-1-12
21	F1-1-15
22	F1-1-16
23	F1-2
24	F1-3
25	F1-4
26	F1-5
27	F1-11
28	F1-12
29	F1-13
30	F1-15
31	F1-16
32	F2
33	F2-1
34	F2-2
35	F2-3
36	F2-4

DECORATIVE PANEL

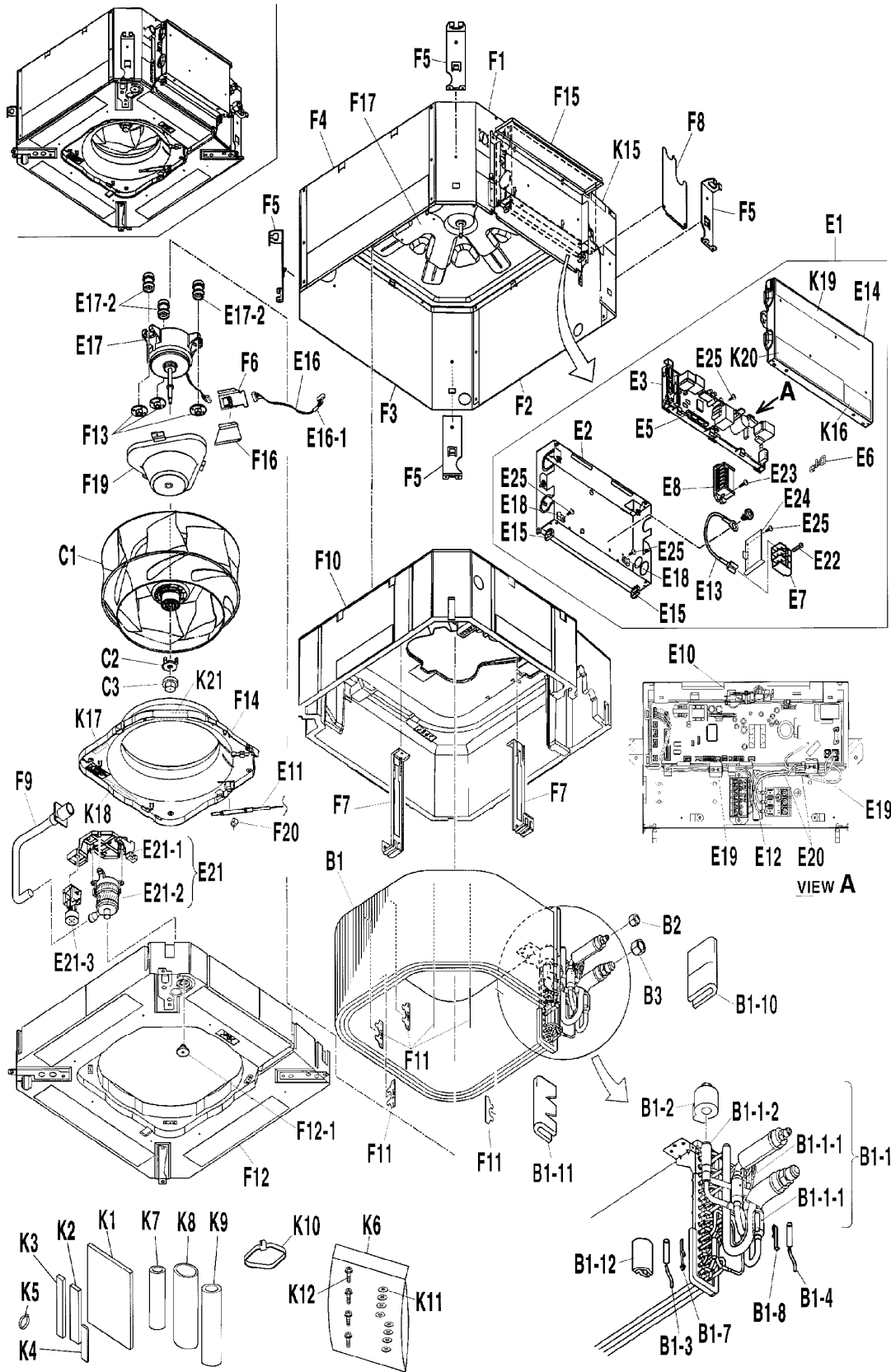
Ref. Part No:	No:	Description:	Ref. Part No:	No:	Description:
Image 1:					
1	NA	DECORATIVE PANEL ASSY. (M1)			
2	NA	DECORATIVE PANEL ASSY. (M1)			
3	5018734	SEALING MATERIAL (M1)			
4	2540901	DECORATIVE PANEL ASSY. (M1)			
5	2540909	BLOCKING PAD (4) ASSY. (M1)			
6	2546681	WIRE HARNESS (M1)			
7	5011472	FIXTURE (2) (M1)			
8	2540910	DISCH. GRILLE HOR. BLADE ASSY. (M1)			
9	2540911	DISCH. GRILLE HOR. BLADE ASSY. (M1)			
10	2395449	ANTISWEAT MATERIAL (M1)			
11	2540902	CORNER COVER ASSY. (M1)			
12	2395456	ANTISWEAT MATERIAL (M1)			
13	2540903	DISCH. GRILLE HOR. BLADE ASSY. (M1)			
14	2540904	DISCH. GRILLE HOR. BLADE ASSY. (M1)			
15	2395463	ANTISWEAT MATERIAL (M1)			
16	NA	BEARING ASSY. (M1)			
17	5011437	BEARING (M1)			
18	2540905	SHAFT (M1)			
19	151065J	STEPPING MOTOR (M1)			
20	2395470	ANTISWEAT MATERIAL (M1)			
21	NA	BEARING ASSY. (M1)			
22	5011438	BEARING (M1)			
23	2540905	SHAFT (M1)			
24	151065J	STEPPING MOTOR (M1)			
25	2540906	BLOCKING PAD (1) ASSY. (M1)			
26	2540907	BLOCKING PAD (2) ASSY. (M1)			
27	2540908	BLOCKING PAD (3) ASSY. (M1)			
28	2540912	SEALING MATERIAL (1) (M1)			
29	2540913	SEALING MATERIAL (2) (M1)			
30	2540914	SEALING MATERIAL (4) (M1)			
31	2540915	SEALING MATERIAL (PANEL) (M1)			
32	NA	SUCTION GRILLE ASSY. (M1)			
33	2540916	SUCTION GRILLE (M1)			
34	2541199	FILTER ASSEMBLY (M1)			
35	2540918	GRILLE FIXTURE (LEFT) (M1)			
36	2540919	GRILLE FIXTURE (RIGHT) (M1)			

Expanded Model Nomenclature

M1 - BYFQ60C3W2W
M2 - FXZQ05TBVJU
M3 - FXZQ07TBVJU
M4 - FXZQ09TBVJU
M5 - FXZQ12TBVJU
M6 - FXZQ15TBVJU
M7 - FXZQ18TBVJU

FXZQ[05,07,09]TBVJU

FXZQ05TBVJU / FXZQ07TBVJU / FXZQ09TBVJU



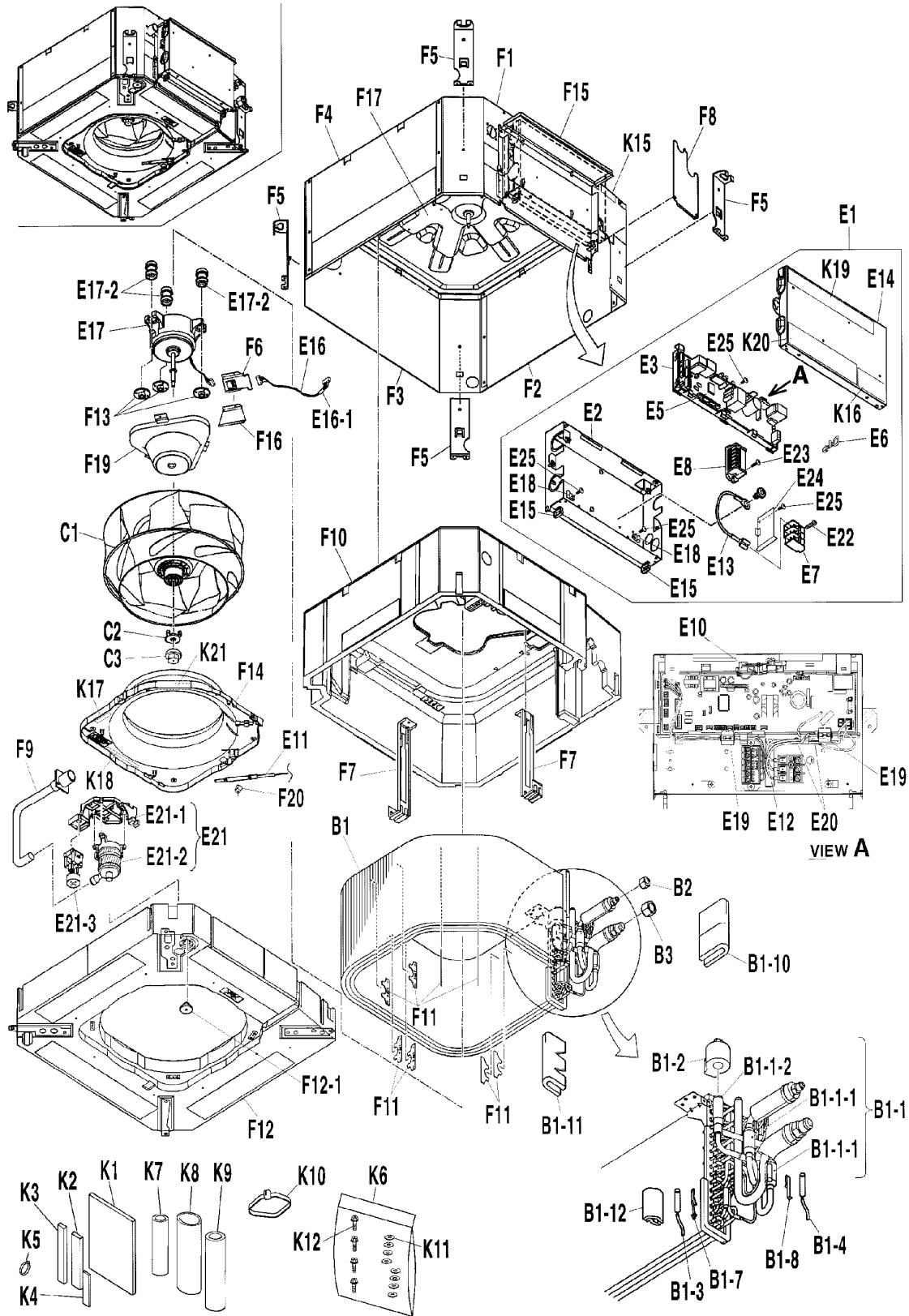
Reference #	Drawing #
1	B1
2	B1-1
3	B1-10
4	B1-11
5	B1-1-1
6	B1-12
7	B1-1-2
8	B1-2
9	B1-3
10	B1-4
11	B1-7
12	B1-8
13	B2
14	B3
15	C1
16	C2
17	C3
18	E1
19	E10
20	E11
21	E12
22	E13
23	E14
24	E15
25	E16
26	E16-1
27	E17
28	E17-2
29	E18
30	E19
31	E2
32	E20
33	E21
34	E21-1
35	E21-2
36	E21-3
37	E23
38	E24
39	E25
40	E3
41	E4
42	E5
43	E6
44	E7
45	E8
46	F1
47	F10
48	F11
49	F12
50	F12-1
51	F13
52	F14
53	F15
54	F16
55	F17
56	F19
57	F2
58	F20
59	F3
60	F4
61	F5
62	F6
63	F7
64	F8
65	F9
66	K1
67	K10
68	K11
69	K12
70	K15
71	K16
72	K17
73	K18
74	K19
75	K2
76	K20
77	K21
78	K3
79	K4
80	K5
81	K6
82	K7
83	K8
84	K9

FXZQ[05,07,09]TBVJU

Ref. Part No: No:	Description:	Ref. Part No: No:	Description:							
Image 1:		Image 1:								
1	2530537	48	2531828							
	PLATE FINNED COIL HEAT EXCH. ASSY. (M2, M3, M4)	49	2543288							
2	NA	50	095251J							
3	2531809	51	054199J							
4	5011020	52	2531822							
5	2113337	53	2531823							
6	2161730	54	2531824							
7	2108342	55	2531825							
8	5011033	56	2531826							
	ELECTRONIC EXP. VALVE COIL ASSY. (M2, M3, M4)	57	1395066							
9	2530209	58	050816J							
10	2530511	59	1395059							
11	042396J	60	139507J							
12	380120J	61	2531818							
13	1723546	62	2531819							
14	119849J	63	2139632							
15	2530214	64	1395112							
16	066216J	65	2530216							
17	082008J	66	032284J							
18	2546666	67	980773							
19	2546668	68	139961J							
	WIRE HARNESS ASSY. (FOR FAN MOTOR) (M2, M3, M4)	69	011425J							
20	2543287	70	NA							
21	5011031	71	2546670							
22	148816J	72	NA							
23	2531813	73	NA							
24	1087017	74	2546671							
25	2530595									
26	2531814	75	170323J							
27	2534240	76	2546672							
28	053203J									
29	102022J	77	2546673							
30	4008841									
31	2546667	78	0014395							
32	099784J	79	143192J							
33	2541256	80	2533760							
34	2531815	81	2546669							
35	2314279									
36	2545345	82	038187J							
37	1796234	83	2455930							
38	827920J	84	170324J							
39	2531816									
40	121072J	Expanded Model Nomenclature								
	CROSS-RECESSED TAPPING SCREW (M2, M3, M4)	<table border="1"> <tr> <td>M1 - BYFQ60C3W2W</td> </tr> <tr> <td>M2 - FXZQ05TBVJU</td> </tr> <tr> <td>M3 - FXZQ07TBVJU</td> </tr> <tr> <td>M4 - FXZQ09TBVJU</td> </tr> <tr> <td>M5 - FXZQ12TBVJU</td> </tr> <tr> <td>M6 - FXZQ15TBVJU</td> </tr> <tr> <td>M7 - FXZQ18TBVJU</td> </tr> </table>		M1 - BYFQ60C3W2W	M2 - FXZQ05TBVJU	M3 - FXZQ07TBVJU	M4 - FXZQ09TBVJU	M5 - FXZQ12TBVJU	M6 - FXZQ15TBVJU	M7 - FXZQ18TBVJU
M1 - BYFQ60C3W2W										
M2 - FXZQ05TBVJU										
M3 - FXZQ07TBVJU										
M4 - FXZQ09TBVJU										
M5 - FXZQ12TBVJU										
M6 - FXZQ15TBVJU										
M7 - FXZQ18TBVJU										
41	2531812									
42	2541255									
42	2546029									
43	066963J									
43	066964J									
44	2395519									
45	2530211									
46	2531817									
47	2531830									

FXZQ[12,15]TBVJU

FXZQ12TBVJU / FXZQ15TBVJU



Reference #	Drawing #
1	B1
2	B1-1
3	B1-10
4	B1-11
5	B1-1-1
6	B1-12
7	B1-1-2
8	B1-2
9	B1-3
10	B1-4
11	B1-7
12	B1-8
13	B2
14	B3
15	C1
16	C2
17	C3
18	E1
19	E10
20	E11
21	E12
22	E13
23	E14
24	E15
25	E16
26	E16-1
27	E17
28	E17-2
29	E18
30	E19
31	E2
32	E20
33	E21
34	E21-1
35	E21-2
36	E21-3
37	E22
38	E23
39	E24
40	E25
41	E3
42	E5
43	E6
44	E7
45	E8
46	F1
47	F10
48	F11
49	F12
50	F12-1
51	F13
52	F14
53	F15
54	F16
55	F17
56	F19
57	F2
58	F20
59	F3
60	F4
61	F5
62	F6
63	F7
64	F8
65	F9
66	K1
67	K10
68	K11
69	K12
70	K15
71	K16
72	K17
73	K18
74	K19
75	K2
76	K20
77	K21
78	K3
79	K4
80	K5
81	K6
82	K7
83	K8
84	K9

FXZQ[12,15]TBVJU

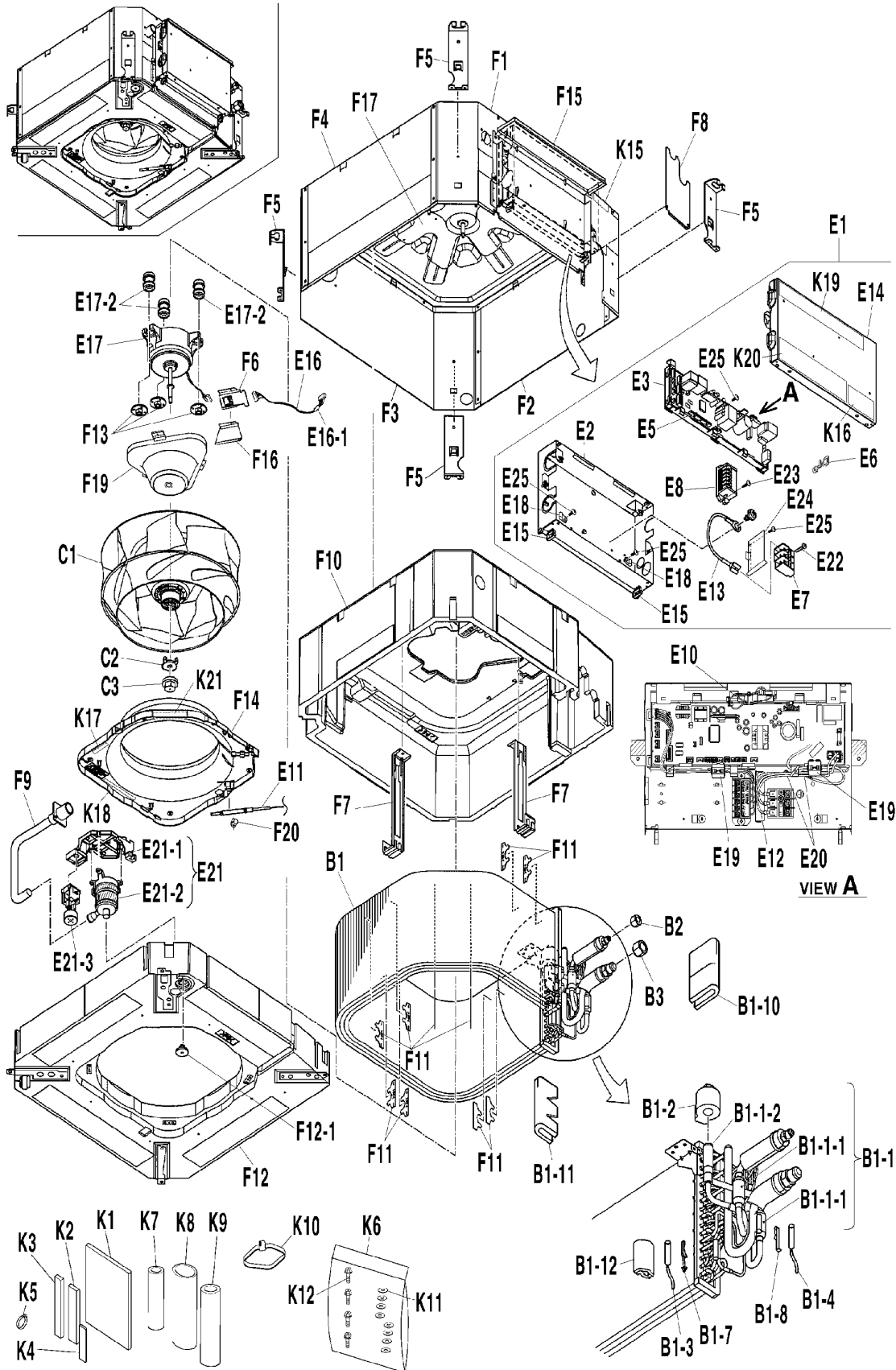
Ref. Part No:	Ref. Part No:	Description:	Description:	
Image 1:		Image 1:		
1	2530538	PLATE FINNED COIL HEAT EXCH. ASSY. (M5, M6)	54 2531824	HOLD PLATE ASSY. (M5, M6)
2	NA	LIQUID PIPE ASSY. (M5, M6)	55 2531825	TOP PLATE ASSY. (M5, M6)
3	2531809	THERMAL INSULATION TAPE (M5, M6)	56 2531826	PARTITION PLATE ASSY. (M5, M6)
4	5011020	THERMAL INSULATION TAPE (M5, M6)	57 1395066	SIDE PLATE (M5, M6)
5	2113337	FILTER (FOR REF.) (M5, M6)	58 050816J	CLAMP (M5, M6)
6	2161730	SEALING MATERIAL (M5, M6)	59 1395059	REAR PLATE (M5, M6)
7	2108359	BODY/ ELECTRONIC EXP. VALVE (M5, M6)	60 139507J	SIDE PLATE (M5, M6)
8	5011033	ELECTRONIC EXP. VALVE COIL ASSY. (M5, M6)	61 2531818	HANGER METAL (M5, M6)
9	2530209	THERMISTOR (COIL) (M5, M6)	62 2531819	HOLD PLATE ASSY. (M5, M6)
10	2530511	THERMISTOR (COIL) (M5, M6)	63 2139632	SET PLATE/ EVAPORATOR (M5, M6)
11	042396J	FITTING SPRING/ THERMISTOR (M5, M6)	64 1395112	FIXTURE/ REF. PIPING (M5, M6)
12	380120J	FITTING SPRING/ THERMISTOR (M5, M6)	65 2530216	DRAIN HOSE (M5, M6)
13	1723546	FLARE NUT (M5, M6)	66 032284J	SEALER/ DRAIN HOSE (M5, M6)
14	119849J	FLARE NUT (M5, M6)	67 980773	TIE WRAP (M5, M6)
15	2530214	TURBO FAN ROTOR (M5, M6)	68 139961J	PLAIN WASHER/ SUCTION FILTER (M5, M6)
16	066216J	LOCK WASHER (M5, M6)	69 011425J	HEX TAPPING SCREW (M5, M6)
17	082008J	HEX LOCK NUT (M5, M6)	70 NA	CAUTION LABEL (BURN) (M5, M6)
18	2546666	ELECTRIC COMPONENTS ASSY. (M5, M6)	71 2546670	CAUTION LABEL (ELECTRIC SHOCK) (M5, M6)
19	2546668	WIRE HARNESS ASSY. (FOR FAN MOTOR) (M5, M6)	72 NA	CAUTION LABEL (ROTATING) (M5, M6)
			73 NA	CAUTION LABEL (MOUNT) (M5, M6)
20	2543287	THERMISTOR (AIR) (M5, M6)	74 2546671	COLLECTIVE INDICATIONS LABEL(ENGLISH) (M5, M6)
21	5011031	WIRE HARNESS ASSY. (M5, M6)		
22	148816J	EARTH WIRE (M5, M6)	75 170323J	SEALING MATERIAL (M5, M6)
23	2531813	COVER/ SWITCH BOX (M5, M6)	76 2546672	COLLECTIVE INDICATIONS LABEL(FRENCH) (M5, M6)
24	1087017	LOCKING WIRE SADDLE (M5, M6)		
25	2530595	WIRE HARNESS ASSY. (M5, M6)	77 2546673	CAUTION LABEL (HEAT EXCHANGER CLEANING) (M5, M6)
26	2531814	FERRITE CORE (M5, M6)		
27	2534240	FAN MOTOR (M5, M6)	78 0014395	SEALER/ DRAIN HOSE (M5, M6)
28	053203J	CUSHION RUBBER/ FAN MOTOR (M5, M6)	79 143192J	THERMAL INSULATION/ LEAD WIRE (M5, M6)
29	102022J	CLAMP/ WIRE HARNESS (M5, M6)	80 2533760	HOSE BAND (M5, M6)
30	4008841	FERRITE CORE (M5, M6)	81 2546669	TRUSS HEAD TAPPING SCREW PACK (M5, M6)
31	2546667	SWITCH BOX ASSY. (M5, M6)	82 038187J	INSULATION TUBE (M5, M6)
32	099784J	TAPPING SCREW (M5, M6)	83 2455930	DRAIN HOSE (M5, M6)
33	2541256	DRAIN PUMP ASSY. (M5, M6)	84 170324J	INSULATION TUBE (M5, M6)
34	2531815	DRAIN PUMP MOUNTING STAND (M5, M6)		
35	2314279	DRAIN PUMP (M5, M6)		
36	2545345	FLOAT SWITCH ASSY. (M5, M6)		
37	1796234	PAN HEAD TAPPING SCREW (M5, M6)		
38	827920J	TAPPING SCREW (M5, M6)		
39	2531816	PROTECTION PLATE (M5, M6)		
40	121072J	CROSS-RECESSED TAPPING SCREW (M5, M6)		
41	2531812	RESIN CASE (M5, M6)		
42	2541255	PRINTED CIRCUIT BOARD ASSY. (CONTROL) (M5, M6)		
43	065331J	CAPACITY SETTING ADAPTOR (M5)		
43	065340J	CAPACITY SETTING ADAPTOR (M6)		
44	2395519	TERMINAL BLOCK (M5, M6)		
45	2530211	TERMINAL BLOCK (CONTROL) (M5, M6)		
46	2531817	FRONT PLATE ASSY. (M5, M6)		
47	2531820	INNER THERMAL INSULATION ASSY. (M5, M6)		
48	2531821	STRAIGHTENING PLATE (M5, M6)		
49	2543288	DRAIN PAN ASSY. (M5, M6)		
50	095251J	DRAIN PLUG (M5, M6)		
51	054199J	NUT WITH FLAT WASHER (M5, M6)		
52	2531822	BELL MOUTH (M5, M6)		
53	2531823	EL. COMPO. BOX FIXTURE (M5, M6)		

Expanded Model Nomenclature

M1 - BYFQ60C3W2W
M2 - FXZQ05TBVJU
M3 - FXZQ07TBVJU
M4 - FXZQ09TBVJU
M5 - FXZQ12TBVJU
M6 - FXZQ15TBVJU
M7 - FXZQ18TBVJU

FXZQ18TBVJU

FXZQ18TBVJU



Reference #	Drawing #
1	B1
2	B1-1
3	B1-10
4	B1-11
5	B1-1-1
6	B1-1-2
7	B1-1-2
8	B1-2
9	B1-3
10	B1-4
11	B1-7
12	B1-8
13	B2
14	B3
15	C1
16	C2
17	C3
18	E1
19	E10
20	E11
21	E12
22	E13
23	E14
24	E15
25	E16
26	E16-1
27	E17
28	E17-2
29	E18
30	E19
31	E2
32	E20
33	E21
34	E21-1
35	E21-2
36	E21-3
37	E22
38	E23
39	E24
40	E25
41	E3
42	E5
43	E6
44	E7
45	E8
46	F1
47	F10
48	F11
49	F12
50	F12-1
51	F13
52	F14
53	F15
54	F16
55	F17
56	F19
57	F2
58	F20
59	F3
60	F4
61	F5
62	F6
63	F7
64	F8
65	F9
66	K1
67	K10
68	K11
69	K12
70	K15
71	K16
72	K17
73	K18
74	K19
75	K2
76	K20
77	K21
78	K3
79	K4
80	K5
81	K6
82	K7
83	K8
84	K9

