
FXMQ**TBVJU HSP Concealed Ducted Unit

FXMQ15TBVJU
FXMQ18TBVJU
FXMQ24TBVJU
FXMQ30TBVJU
FXMQ36TBVJU
FXMQ48TBVJU
FXMQ54TBVJU



This manual is to be used by qualified technicians only.

Important Information

Index

Functional Parts List	3
Illustration and Parts	4 - 13

Views shown are for parts illustrations only, not servicing procedures.

Text Codes:

AR - As Required

NA - Not Available

NS - Not Shown

00000000 - See Note

QTY - Quantity Example (QTY 3) (If Quantity not shown, Quantity = 1)

M - Model Example (M1) (If M Code not shown, then part is used on all Models)

Expanded Model Nomenclature:

Example M1 - Model#1 M2 - Model#2 M3 - Model#3

Daikin Comfort Technologies Manufacturing , L.P. is not responsible for personal injury or property damage resulting from improper service. Review all service information before beginning repairs.

Warranty service must be performed by an authorized technician, using authorized factory parts. If service is required after the warranty expires, Daikin Comfort Technologies Manufacturing , L.P. also recommends contacting an authorized technician and using authorized factory parts.

Daikin Comfort Technologies Manufacturing , L.P. reserves the right to discontinue, or change at any time, specifications or designs without notice or without incurring obligations.

For assistance within the U.S.A. contact:
Homeowner Support
Daikin Comfort Technologies Manufacturing , L.P.
19001 Kermier Road
Waller, Texas 77484
855-770-5678-Telephone
713-863-2382-Facsimile

For assistance outside the U.S.A. contact:
International Division
Daikin Comfort Technologies Manufacturing , L.P.
19001 Kermier Road
Waller, Texas 77484
713-861-2500-Telephone
713-863-2382-Facsimile

Functional Parts

Part

No: Description:

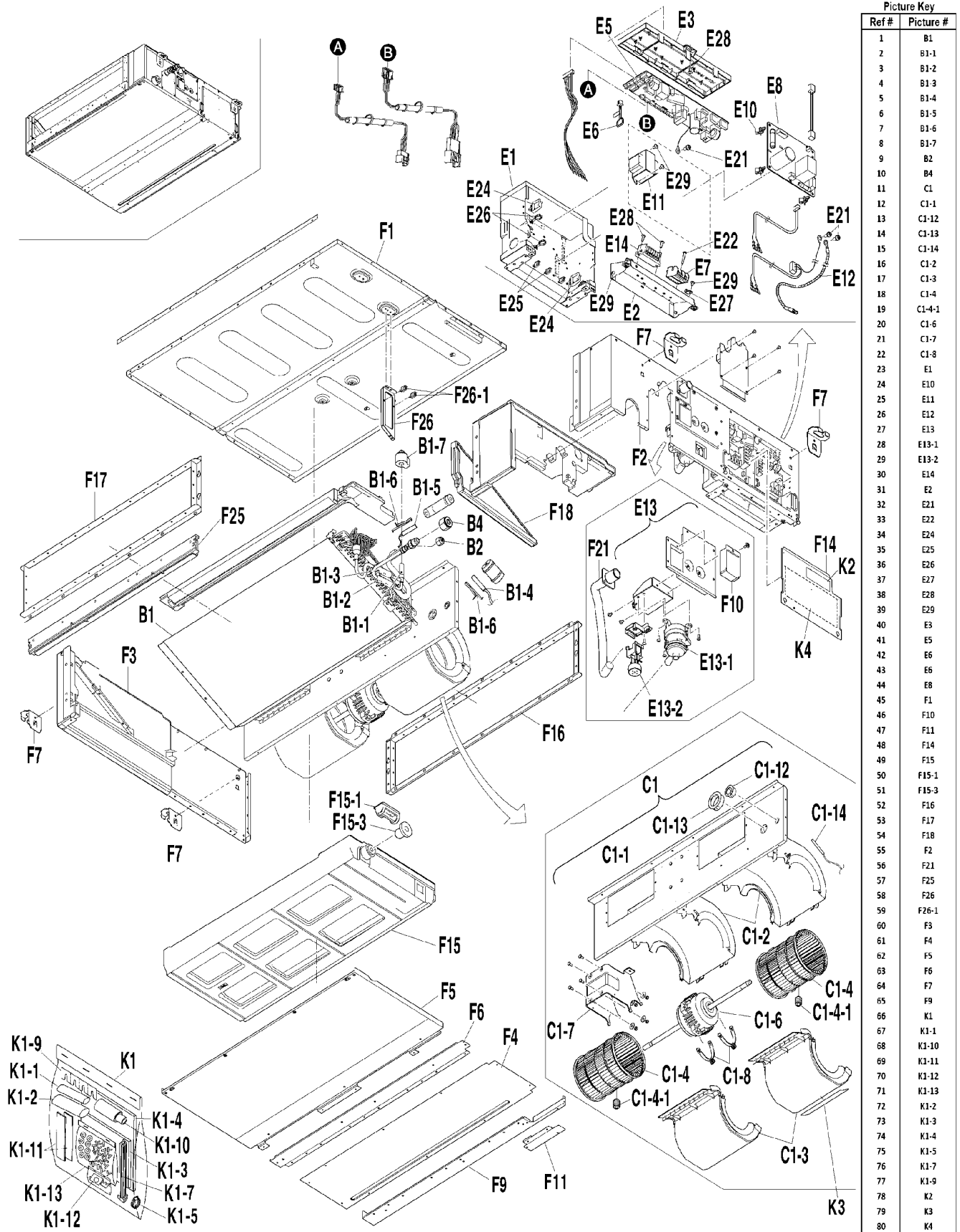
2425326	BODY/ ELECTRONIC EXP. VALVE (M3)
2425333	BODY/ ELECTRONIC EXP. VALVE (M4, M5, M6)
2425340	BODY/ ELECTRONIC EXP. VALVE (M7)
2214021	BODY/ ELECTRONIC EXP. VALVE (M1, M2)
064060J	CAPACITY SETTING ADAPTOR (M2)
065340J	CAPACITY SETTING ADAPTOR (M1)
065336J	CAPACITY SETTING ADAPTOR (M3)
065337J	CAPACITY SETTING ADAPTOR (M5)
066965J	CAPACITY SETTING ADAPTOR (M4)
065338J	CAPACITY SETTING ADAPTOR (M6)
065339J	CAPACITY SETTING ADAPTOR (M7)
4015741	COIL/ ELECTRONIC EXP. VALVE
2534708	FLOAT SWITCH ASSY.
2261089	MOTOR (DRAIN PUMP)
2550996	MOTOR (INDOOR FAN) (M4, M5, M6)
2459057	MOTOR (INDOOR FAN) (M7)
2258153	MOTOR (INDOOR FAN) (M1, M2, M3)
2548333	PRINTED CIRCUIT BOARD ASSY. (CONTROL) (M1, M2, M3)
2548334	PRINTED CIRCUIT BOARD ASSY. (CONTROL) (M4, M5, M6, M7)
4025260	PRINTED CIRCUIT BOARD ASSY. (FAN) (M1, M2, M3)
2548335	PRINTED CIRCUIT BOARD ASSY. (FAN) (M4, M5, M6)
2548408	PRINTED CIRCUIT BOARD ASSY. (FAN) (M7)
2261065	SWITCH BOX ASSY. (M1, M2, M3)
4016363	SWITCH BOX ASSY. (M4, M5, M6, M7)
2398671	THERMISTOR ASSY. (AIR)
2414528	THERMISTOR ASSY. (COIL)
2398664	THERMISTOR ASSY. (COIL)

Expanded Model Nomenclature

M1 - FXMQ15TBVJU
M2 - FXMQ18TBVJU
M3 - FXMQ24TBVJU
M4 - FXMQ30TBVJU
M5 - FXMQ36TBVJU
M6 - FXMQ48TBVJU
M7 - FXMQ54TBVJU

FXMQ[15,18]TBVJU

FXMQ15TBVJU / FXMQ18TBVJU



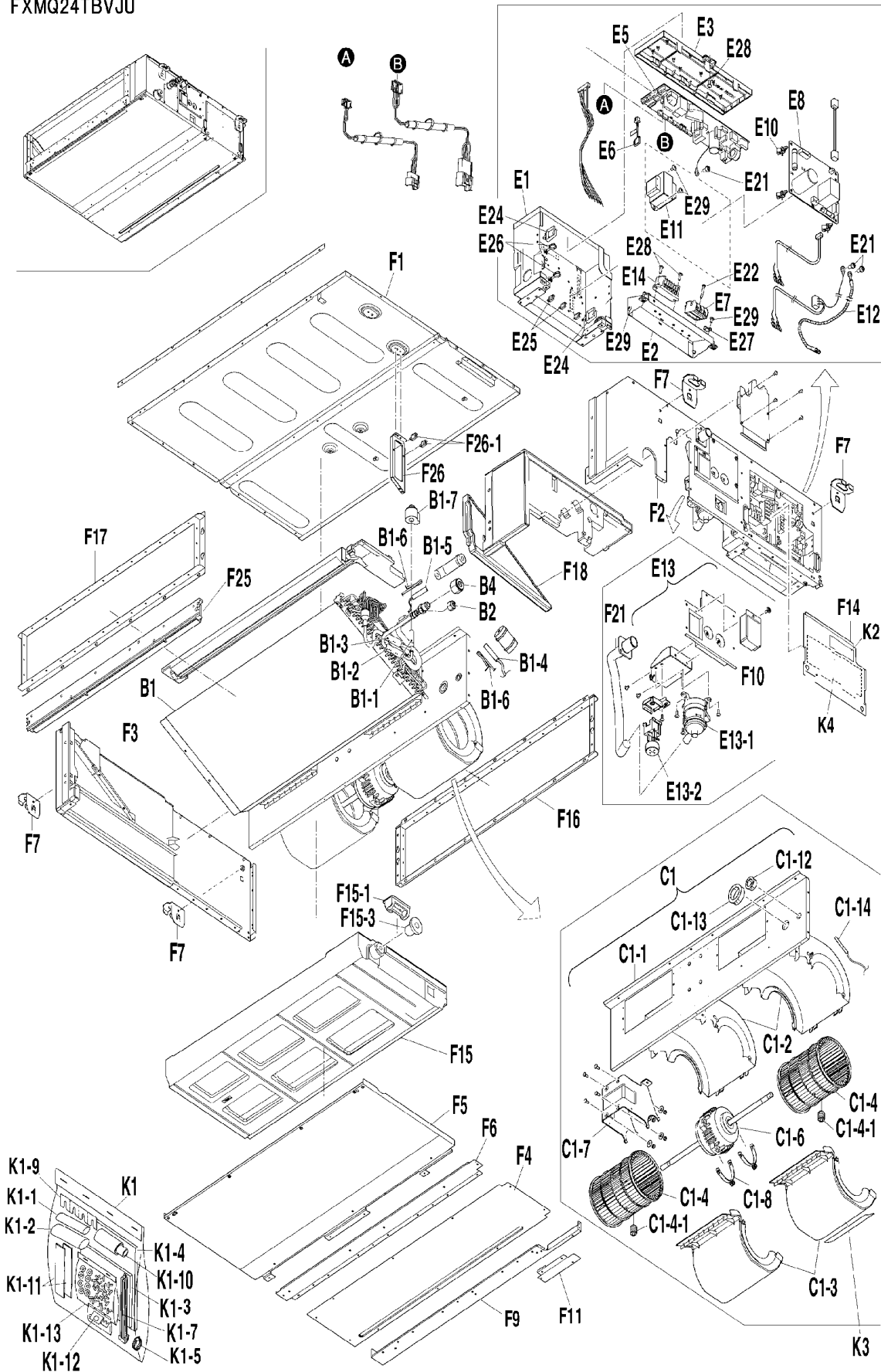
Picture Key	
Ref #	Picture #
1	B1
2	B1-1
3	B1-2
4	B1-3
5	B1-4
6	B1-5
7	B1-6
8	B1-7
9	B2
10	B4
11	C1
12	C1-1
13	C1-12
14	C1-13
15	C1-14
16	C1-2
17	C1-3
18	C1-4
19	C1-4-1
20	C1-6
21	C1-7
22	C1-8
23	E1
24	E10
25	E11
26	E12
27	E13
28	E13-1
29	E13-2
30	E14
31	E2
32	E21
33	E22
34	E23
35	E24
36	E25
37	E26
38	E27
39	E28
40	E29
41	E3
42	E5
43	E6
44	E8
45	F1
46	F10
47	F11
48	F14
49	F15
50	F15-1
51	F15-3
52	F16
53	F17
54	F18
55	F2
56	F21
57	F25
58	F26
59	F26-1
60	F3
61	F4
62	F5
63	F6
64	F7
65	F9
66	K1
67	K1-1
68	K1-10
69	K1-11
70	K1-12
71	K1-13
72	K1-2
73	K1-3
74	K1-4
75	K1-5
76	K1-7
77	K1-9
78	K2
79	K3
80	K4

FXMQ[15,18]TBVJU

Ref. Part No:	Ref. Part No:	Description:	Description:
Image 1:		Image 1:	
1	2214021	BODY/ ELECTRONIC EXP. VALVE (M1, M2)	51 4015767
1	4015741	COIL/ ELECTRONIC EXP. VALVE (M1, M2)	51 537994
1	1723546	FLARE NUT (M1, M2)	51 2261205
1	2546609	HEAT EXCHANGER ASSY. (M1, M2)	51 2261229
1	2141635	REFRIGERANT FILTER (M1, M2)	51 2546610
1	2141642	REFRIGERANT FILTER (M1, M2)	51 2261180
1	007432J	RETAINER/ THERMISTOR CLAMP (M1, M2)	61 NA
1	2398664	THERMISTOR ASSY. (COIL) (M1, M2)	61 2261577
1	2414528	THERMISTOR ASSY. (COIL) (M1, M2)	61 2261281
11	2550990	FAN HOUSING (LOWER) (M1, M2)	61 4017147
11	2550989	FAN HOUSING (UPPER) (M1, M2)	61 4016379
11	2261313	FAN TOP PLATE ASSY. (M1, M2)	61 4000023
11	119849J	FLARE NUT (M1, M2)	61 2550991
11	011582J	HEX SOCKET SCREW (M1, M2)	61 038187J
11	4007850	LOCK PLATE/ FAN MOTOR (M1, M2)	61 2544361
11	2258153	MOTOR (INDOOR FAN) (M1, M2)	61 027843J
11	2261058	MOTOR BASE (M1, M2)	71 2546670
11	2550988	SIROCCO FAN ASSY. (M1, M2)	71 4023075
11	1863716	SIROCCO ROTOR ASSY. (M1, M2)	71 2393001
21	144573J	BUSHING (M1, M2)	71 2455745
21	170618J	BUSHING (LOW VOLTAGE) (M1, M2)	71 2533760
21	064060J	CAPACITY SETTING ADAPTOR (M2)	71 032284J
21	065340J	CAPACITY SETTING ADAPTOR (M1)	71 2261298
21	2548333	PRINTED CIRCUIT BOARD ASSY. (CONTROL) (M1, M2)	71 980773
21	4025260	PRINTED CIRCUIT BOARD ASSY. (FAN) (M1, M2)	71 2532974
21	2374675	RESIN CASE (M1, M2)	71 1755334
21	2374668	SET PLATE/ IMPLEMENT USE (4) (M1, M2)	81 2550997
21	2261065	SWITCH BOX ASSY. (M1, M2)	
21	2395519	TERMINAL BLOCK (M1, M2)	
21	2398671	THERMISTOR ASSY. (AIR) (M1, M2)	
31	2261072	EARTH WIRE (M1, M2)	
31	2534708	FLOAT SWITCH ASSY. (M1, M2)	
31	380402J	LOCKING CARD SPACER (M1, M2)	
31	2261089	MOTOR (DRAIN PUMP) (M1, M2)	
31	174888J	PAN HEAD TAPPING SCREW (M1, M2)	
31	4015730	REACTOR (M1, M2)	
31	4015731	SERVICE LID ASSY. (M1, M2)	
31	113783J	TAPPING SCREW (M1, M2)	
31	2002033	TERMINAL BLOCK (REMOTE CONTROLLER) (M1, M2)	
31	352004	WIRE CLIP (M1, M2)	
41	2261344	BOTTOM PLATE (M1, M2)	
41	2261337	CHAMBER COVER (M1, M2)	
41	121072J	CROSS-RECESSED TAPPING SCREW (M1, M2)	
41	1855164	HARNESS LIFTER (M1, M2)	
41	0816755	RESIN CLAMP (M1, M2)	
41	2546603	SIDE PLATE (LEFT) (M1, M2)	
41	2261135	SIDE PLATE (RIGHT) (M1, M2)	
41	2261320	TOP PLATE ASSY. (M1, M2)	
41	109688J	TRUSS HEAD TAPPING SCREW (M1, M2)	
41	027843J	WIRE CLIP (M1, M2)	
51	2261560	AIR INLET FLANGE ASSY. (M1, M2)	
51	1985421	ANTI-BACTERIAL AGENTS ASSY. (M1, M2)	
51	2261553	BOTTOM FRAME (M1, M2)	
51	2261351	BOTTOM PLATE (3) (M1, M2)	
51	4015767	BOTTOM PLATE (4) (M1, M2)	
51	537994	CAP/ DRAIN SOCKET (M1, M2)	
51	2261205	COVER/ INSPECTION HATCH (M1, M2)	
51	2261229	COVER/ SWITCH BOX (M1, M2)	
51	2546610	DRAIN PAN ASSY. (M1, M2)	
51	2261180	HOOK (M1, M2)	
61	NA	ACCESSORIES ASSY. (1) (M1, M2)	
61	2261577	AIR OUTLET FLANGE ASSY. (M1, M2)	
61	2261281	DRAIN HOSE ASSY. (M1, M2)	
61	4017147	FRONT STAY ASSY. (M1, M2)	
61	4016379	MOUNTING PLATE (M1, M2)	
61	4000023	SEALING MATERIAL (M1, M2)	
61	2550991	THERMAL INSULATION (PARTITION) (M1, M2)	
61	038187J	THERMAL INSULATION TUBE (M1, M2)	
61	2544361	THERMAL INSULATION TUBE (M1, M2)	
61	027843J	WIRE CLIP (M1, M2)	
71	2546670	CAUTION LABEL (ELECTRIC SHOCK) (M1, M2)	
71	4023075	CAUTION LABEL (ROTATING) (M1, M2)	
71	2393001	CONDUIT MOUNTING PLATE (M1, M2)	
71	2455745	DRAIN HOSE (M1, M2)	
71	2533760	HOSE BAND (M1, M2)	
71	032284J	SEALER/ DRAIN HOSE (M1, M2)	
71	2261298	SEALING MATERIAL (M1, M2)	
71	980773	TIE WRAP (M1, M2)	
71	2532974	TRUSS HEAD TAPPING SCREW (M1, M2)	
71	1755334	WASHER FIXING MATERIAL (M1, M2)	
81	2550997	WIRING DIAGRAM LABEL (M1, M2)	
Expanded Model Nomenclature			
M1 - FXMQ15TBVJU			
M2 - FXMQ18TBVJU			
M3 - FXMQ24TBVJU			
M4 - FXMQ30TBVJU			
M5 - FXMQ36TBVJU			
M6 - FXMQ48TBVJU			
M7 - FXMQ54TBVJU			

FXMQ24TBVJU

FXMQ24TBVJU



Picture Key

Ref #	Picture #
1	B1
2	B1-1
3	B1-2
4	B1-3
5	B1-4
6	B1-5
7	B1-6
8	B1-7
9	B2
10	B4
11	C1
12	C1-1
13	C1-2
14	C1-3
15	C1-4
16	C1-4-1
17	C1-6
18	C1-7
19	C1-8
20	C1-12
21	C1-13
22	C1-14
23	E1
24	E2
25	E3
26	E5
27	E6
28	E7
29	E8
30	E10
31	E11
32	E12
33	E13
34	E13-1
35	E13-2
36	E14
37	E21
38	E22
39	E24
40	E25
41	E26
42	E27
43	E28
44	E29
45	F1
46	F2
47	F3
48	F4
49	F5
50	F6
51	F7
52	F9
53	F10
54	F11
55	F14
56	F15
57	F15-1
58	F15-3
59	F16
60	F17
61	F18
62	F21
63	F25
64	F26
65	F26-1
66	K1
67	K1-1
68	K1-2
69	K1-3
70	K1-4
71	K1-5
72	K1-7
73	K1-9
74	K1-10
75	K1-11
76	K1-12
77	K1-13
78	K2
79	K3
80	K4

FXMQ24TBVJU

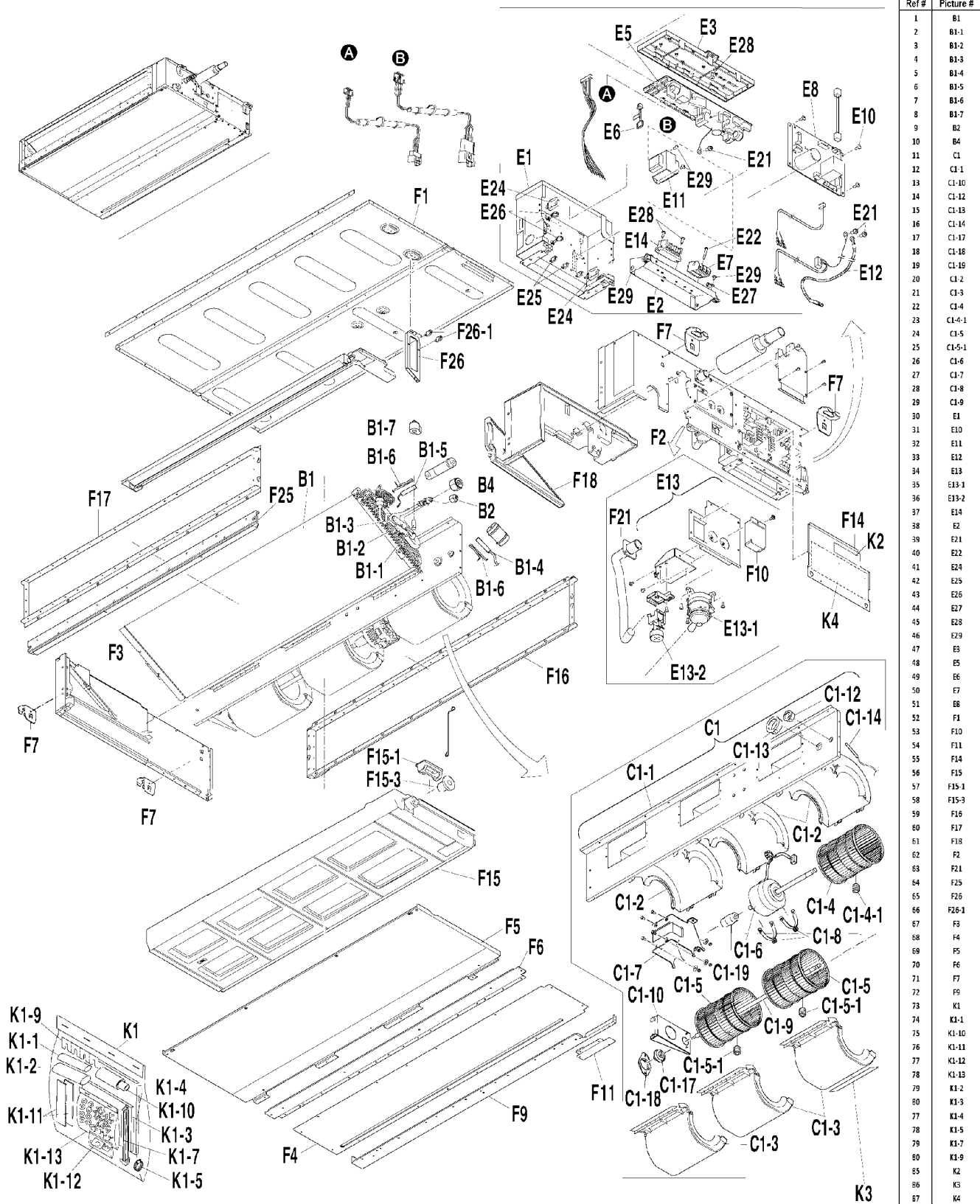
Ref. Part No:	Ref. Part No:	Description:	Description:
Image 1:		Image 1:	
1	2425326	BODY/ ELECTRONIC EXP. VALVE (M3)	51 2261205 COVER/ INSPECTION HATCH (M3)
1	4015741	COIL/ ELECTRONIC EXP. VALVE (M3)	51 2261229 COVER/ SWITCH BOX (M3)
1	119848J	FLARE NUT (M3)	51 2546610 DRAIN PAN ASSY. (M3)
1	2546615	HEAT EXCHANGER ASSY. (M3)	51 2261180 HOOK (M3)
1	2141635	REFRIGERANT FILTER (M3)	61 NA ACCESSORIES ASSY. (1) (M3)
1	2141642	REFRIGERANT FILTER (M3)	61 2261577 AIR OUTLET FLANGE ASSY. (M3)
1	007432J	RETAINER/ THERMISTOR CLAMP (M3)	61 2261281 DRAIN HOSE ASSY. (M3)
1	2398664	THERMISTOR ASSY. (COIL) (M3)	61 4017147 FRONT STAY ASSY. (M3)
1	2414528	THERMISTOR ASSY. (COIL) (M3)	61 4016379 MOUNTING PLATE (M3)
11	2550990	FAN HOUSING (LOWER) (M3)	61 4000023 SEALING MATERIAL (M3)
11	2550989	FAN HOUSING (UPPER) (M3)	61 2550991 THERMAL INSULATION (PARTITION) (M3)
11	2261313	FAN TOP PLATE ASSY. (M3)	61 038187J THERMAL INSULATION TUBE (M3)
11	119850J	FLARE NUT (M3)	61 2544361 THERMAL INSULATION TUBE (M3)
11	011582J	HEX SOCKET SCREW (M3)	61 027843J WIRE CLIP (M3)
11	4007850	LOCK PLATE/ FAN MOTOR (M3)	71 2546670 CAUTION LABEL (ELECTRIC SHOCK) (M3)
11	2258153	MOTOR (INDOOR FAN) (M3)	71 4023075 CAUTION LABEL (ROTATING) (M3)
11	2261058	MOTOR BASE (M3)	71 2393001 CONDUIT MOUNTING PLATE (M3)
11	2550988	SIROCCO FAN ASSY. (M3)	71 2455745 DRAIN HOSE (M3)
11	1863716	SIROCCO ROTOR ASSY. (M3)	71 2533760 HOSE BAND (M3)
21	144573J	BUSHING (M3)	71 032284J SEALER/ DRAIN HOSE (M3)
21	170618J	BUSHING (LOW VOLTAGE) (M3)	71 2261298 SEALING MATERIAL (M3)
21	065336J	CAPACITY SETTING ADAPTOR (M3)	71 980773 TIE WRAP (M3)
21	2548333	PRINTED CIRCUIT BOARD ASSY. (CONTROL) (M3)	71 2532974 TRUSS HEAD TAPPING SCREW (M3)
			71 1755334 WASHER FIXING MATERIAL (M3)
21	4025260	PRINTED CIRCUIT BOARD ASSY. (FAN) (M3)	81 2550997 WIRING DIAGRAM LABEL (M3)
21	2374675	RESIN CASE (M3)	
21	2374668	SET PLATE/ IMPLEMENT USE (4) (M3)	
21	2261065	SWITCH BOX ASSY. (M3)	
21	2395519	TERMINAL BLOCK (M3)	
21	2398671	THERMISTOR ASSY. (AIR) (M3)	
31	2261072	EARTH WIRE (M3)	
31	2534708	FLOAT SWITCH ASSY. (M3)	
31	380402J	LOCKING CARD SPACER (M3)	
31	2261089	MOTOR (DRAIN PUMP) (M3)	
31	174888J	PAN HEAD TAPPING SCREW (M3)	
31	4015730	REACTOR (M3)	
31	4015731	SERVICE LID ASSY. (M3)	
31	113783J	TAPPING SCREW (M3)	
31	2002033	TERMINAL BLOCK (REMOTE CONTROLLER) (M3)	
31	352004	WIRE CLIP (M3)	
41	2261344	BOTTOM PLATE (M3)	
41	2261337	CHAMBER COVER (M3)	
41	121072J	CROSS-RECESSED TAPPING SCREW (M3)	
41	1855164	HARNESS LIFTER (M3)	
41	0816755	RESIN CLAMP (M3)	
41	2546603	SIDE PLATE (LEFT) (M3)	
41	2261135	SIDE PLATE (RIGHT) (M3)	
41	2261320	TOP PLATE ASSY. (M3)	
41	109688J	TRUSS HEAD TAPPING SCREW (M3)	
41	027843J	WIRE CLIP (M3)	
51	2261560	AIR INLET FLANGE ASSY. (M3)	
51	1985421	ANTI-BACTERIAL AGENTS ASSY. (M3)	
51	2261553	BOTTOM FRAME (M3)	
51	2261351	BOTTOM PLATE (3) (M3)	
51	4015767	BOTTOM PLATE (4) (M3)	
51	537994	CAP/ DRAIN SOCKET (M3)	

Expanded Model Nomenclature

M1 - FXMQ15TBVJU
M2 - FXMQ18TBVJU
M3 - FXMQ24TBVJU
M4 - FXMQ30TBVJU
M5 - FXMQ36TBVJU
M6 - FXMQ48TBVJU
M7 - FXMQ54TBVJU

FXMQ[30,36]TBVJU

FXMQ30TBVJU / FXMQ36TBVJU



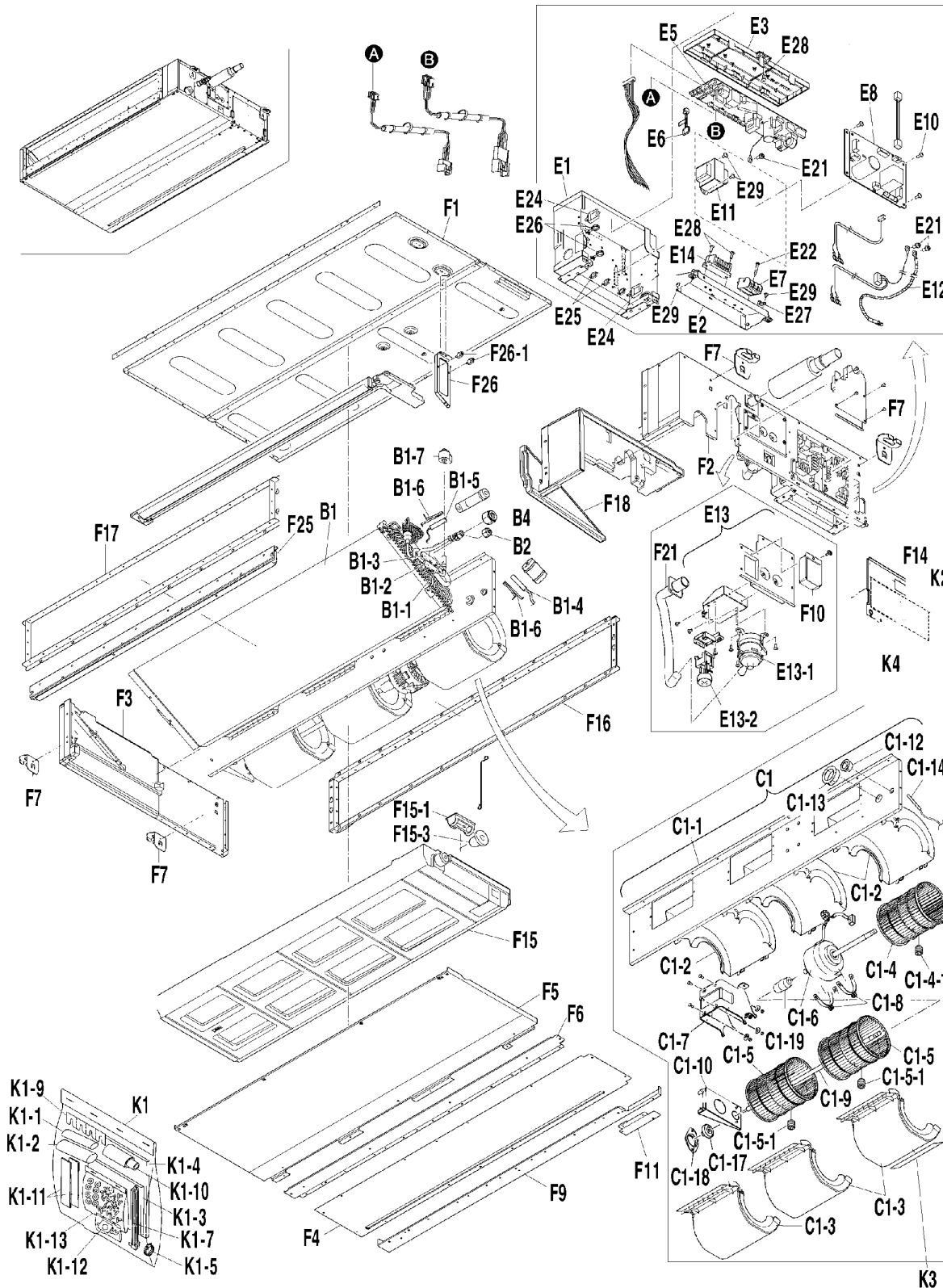
Picture Key	
Ref #	Picture #
1	B1
2	B1-1
3	B1-2
4	B1-3
5	B1-4
6	B1-5
7	B1-6
8	B1-7
9	B2
10	B4
11	C1
12	C1-1
13	C1-10
14	C1-12
15	C1-13
16	C1-14
17	C1-17
18	C1-18
19	C1-19
20	C1-2
21	C1-3
22	C1-4
23	C1-4-1
24	C1-5
25	C1-5-1
26	C1-6
27	C1-7
28	C1-8
29	C1-9
30	E1
31	E10
32	E11
33	E12
34	E13
35	E13-1
36	E13-2
37	E14
38	E2
39	E21
40	E22
41	E24
42	E25
43	E26
44	E27
45	E28
46	E29
47	E3
48	E5
49	E6
50	F7
51	F8
52	F1
53	F10
54	F11
55	F14
56	F15
57	F15-1
58	F15-3
59	F16
60	F17
61	F18
62	F2
63	F21
64	F25
65	F26
66	F26-1
67	F3
68	F4
69	F5
70	F6
71	F7
72	F9
73	F9
74	K1-1
75	K1-10
76	K1-11
77	K1-12
78	K1-13
79	K1-2
80	K1-3
81	K1-3
77	K1-4
78	K1-5
79	K1-7
80	K1-9
85	K2
86	K3
87	K4

FXMQ[30,36]TBVJU

Ref. Part No:	Ref. Part No:	Description:	Description:								
Image 1:		Image 1:									
1	2425333	BODY/ ELECTRONIC EXP. VALVE (M4, M5)	51	2261205	COVER/ INSPECTION HATCH (M4, M5)						
1	4015741	COIL/ ELECTRONIC EXP. VALVE (M4, M5)	51	2261229	COVER/ SWITCH BOX (M4, M5)						
1	119848J	FLARE NUT (M4, M5)	51	2546617	DRAIN PAN ASSY. (M4, M5)						
1	2546616	HEAT EXCHANGER ASSY. (M4, M5)	51	2548335	PRINTED CIRCUIT BOARD ASSY. (FAN) (M4, M5)						
1	2141659	REFRIGERANT FILTER (M4, M5)	51	2395519	TERMINAL BLOCK (M4, M5)						
1	2141666	REFRIGERANT FILTER (M4, M5)	51	2261630	TOP PLATE ASSY. (M4, M5)						
1	007432J	RETAINER/ THERMISTOR CLAMP (M4, M5)	61	2261692	AIR OUTLET FLANGE ASSY. (M4, M5)						
1	2398664	THERMISTOR ASSY. (COIL) (M4, M5)	61	2261654	BOTTOM PLATE (M4, M5)						
1	2414528	THERMISTOR ASSY. (COIL) (M4, M5)	61	2261647	CHAMBER COVER (M4, M5)						
11	144573J	BUSHING (M4, M5)	61	2261281	DRAIN HOSE ASSY. (M4, M5)						
11	170618J	BUSHING (LOW VOLTAGE) (M4, M5)	61	4017148	FRONT STAY ASSY. (M4, M5)						
11	019928J	COUPLING RUBBER (M4, M5)	61	4016379	MOUNTING PLATE (M4, M5)						
11	1876279	FAN BEARING PLATE (M4, M5)	61	2546603	SIDE PLATE (LEFT) (M4, M5)						
11	2456166	FAN BEARING VIBRATION ABSORBER (M4, M5)	61	2261135	SIDE PLATE (RIGHT) (M4, M5)						
11	2261609	FAN TOP PLATE ASSY. (M4, M5)	61	2550991	THERMAL INSULATION (PARTITION) (M4, M5)						
11	119850J	FLARE NUT (M4, M5)	61	027843J	WIRE CLIP (M4, M5)						
11	443026J	MOUNTING PLATE/ FAN BEARING (M4, M5)	71	NA	ACCESSORIES ASSY. (1) (M4, M5)						
11	2550994	SIROCCO FAN ASSY. (M4, M5)	71	2261678	BOTTOM FRAME (M4, M5)						
11	2398671	THERMISTOR ASSY. (AIR) (M4, M5)	71	2261661	BOTTOM PLATE (3) (M4, M5)						
21	2550990	FAN HOUSING (LOWER) (M4, M5)	71	2393001	CONDUIT MOUNTING PLATE (M4, M5)						
21	2550989	FAN HOUSING (UPPER) (M4, M5)	71	2455745	DRAIN HOSE (M4, M5)						
21	2270386	FAN SHAFT ASSY. (M4, M5)	71	2261180	HOOK (M4, M5)						
21	011582J	HEX SOCKET SCREW (M4, M5)	71	2533760	HOSE BAND (M4, M5)						
21	011582J	HEX SOCKET SCREW (M4, M5)	71	032284J	SEALER/ DRAIN HOSE (M4, M5)						
21	4007850	LOCK PLATE/ FAN MOTOR (M4, M5)	71	2261298	SEALING MATERIAL (M4, M5)						
21	2550996	MOTOR (INDOOR FAN) (M4, M5)	71	038187J	THERMAL INSULATION TUBE (M4, M5)						
21	4015746	MOTOR BASE (M4, M5)	71	2544361	THERMAL INSULATION TUBE (M4, M5)						
21	1863716	SIROCCO ROTOR ASSY. (M4, M5)	71	980773	TIE WRAP (M4, M5)						
21	2261616	SIROCCO ROTOR ASSY. (M4, M5)	71	2550995	TRUSS HEAD TAPPING SCREW PACK (M4, M5)						
31	2261072	EARTH WIRE (M4, M5)	81	2546670	CAUTION LABEL (ELECTRIC SHOCK) (M4, M5)						
31	2534708	FLOAT SWITCH ASSY. (M4, M5)	81	4023075	CAUTION LABEL (ROTATING) (M4, M5)						
31	2261089	MOTOR (DRAIN PUMP) (M4, M5)	81	4000023	SEALING MATERIAL (M4, M5)						
31	2397940	REACTOR (M4, M5)	81	1755334	WASHER FIXING MATERIAL (M4, M5)						
31	4015731	SERVICE LID ASSY. (M4, M5)	81	2550997	WIRING DIAGRAM LABEL (M4, M5)						
31	2374668	SET PLATE/ IMPLEMENT USE (4) (M4, M5)	Expanded Model Nomenclature								
31	4016363	SWITCH BOX ASSY. (M4, M5)	<table border="1"> <tr> <td>M1 - FXMQ15TBVJU</td> </tr> <tr> <td>M2 - FXMQ18TBVJU</td> </tr> <tr> <td>M3 - FXMQ24TBVJU</td> </tr> <tr> <td>M4 - FXMQ30TBVJU</td> </tr> <tr> <td>M5 - FXMQ36TBVJU</td> </tr> <tr> <td>M6 - FXMQ48TBVJU</td> </tr> <tr> <td>M7 - FXMQ54TBVJU</td> </tr> </table>		M1 - FXMQ15TBVJU	M2 - FXMQ18TBVJU	M3 - FXMQ24TBVJU	M4 - FXMQ30TBVJU	M5 - FXMQ36TBVJU	M6 - FXMQ48TBVJU	M7 - FXMQ54TBVJU
M1 - FXMQ15TBVJU											
M2 - FXMQ18TBVJU											
M3 - FXMQ24TBVJU											
M4 - FXMQ30TBVJU											
M5 - FXMQ36TBVJU											
M6 - FXMQ48TBVJU											
M7 - FXMQ54TBVJU											
31	113783J	TAPPING SCREW (M4, M5)									
31	2002033	TERMINAL BLOCK (REMOTE CONTROLLER) (M4, M5)									
31	042425J	TRUSS HEAD TAPPING SCREW (M4, M5)									
41	065337J	CAPACITY SETTING ADAPTOR (M5)									
41	066965J	CAPACITY SETTING ADAPTOR (M4)									
41	121072J	CROSS-RECESSED TAPPING SCREW (M4, M5)									
41	1855164	HARNESS LIFTER (M4, M5)									
41	174888J	PAN HEAD TAPPING SCREW (M4, M5)									
41	2548334	PRINTED CIRCUIT BOARD ASSY. (CONTROL) (M4, M5)									
41	2374675	RESIN CASE (M4, M5)									
41	0816755	RESIN CLAMP (M4, M5)									
41	109688J	TRUSS HEAD TAPPING SCREW (M4, M5)									
41	027843J	WIRE CLIP (M4, M5)									
41	352004	WIRE CLIP (M4, M5)									
51	2261685	AIR INLET FLANGE ASSY. (M4, M5)									
51	1985421	ANTI-BACTERIAL AGENTS ASSY. (M4, M5)									
51	4015767	BOTTOM PLATE (4) (M4, M5)									
51	537994	CAP/ DRAIN SOCKET (M4, M5)									

FXMQ48TBVJU

FXMQ48TBVJU



Picture Key

Ref #	Picture #
1	B1
2	B1-1
3	B1-2
4	B1-3
5	B1-4
6	B1-5
7	B1-6
8	B1-7
9	B2
10	B4
11	C1
12	C1-1
13	C1-2
14	C1-3
15	C1-4
16	C1-4-1
17	C1-5
18	C1-5-1
19	C1-6
20	C1-7
21	C1-8
22	C1-9
23	C1-10
24	C1-12
25	C1-13
26	C1-14
27	C1-17
28	C1-18
29	C1-19
30	E1
31	E2
32	E3
33	E5
34	E6
35	E7
36	E8
37	E10
38	E11
39	E12
40	E13
41	E13-1
42	E13-2
43	E14
44	E21
45	E22
46	E24
47	E25
48	E26
49	E27
50	E28
51	E29
52	F1
53	F2
54	F3
55	F4
56	F5
57	F6
58	F7
59	F9
60	F10
61	F11
62	F14
63	F15
64	F15-1
65	F15-3
66	F16
67	F17
68	F18
69	F21
70	F25
71	F26
72	F26-1
73	K1
74	K1-1
75	K1-2
76	K1-3
77	K1-4
78	K1-5
79	K1-7
80	K1-9
81	K1-10
82	K1-11
83	K1-12
84	K1-13
85	K2
86	K3
87	K4

FXMQ48TBVJU

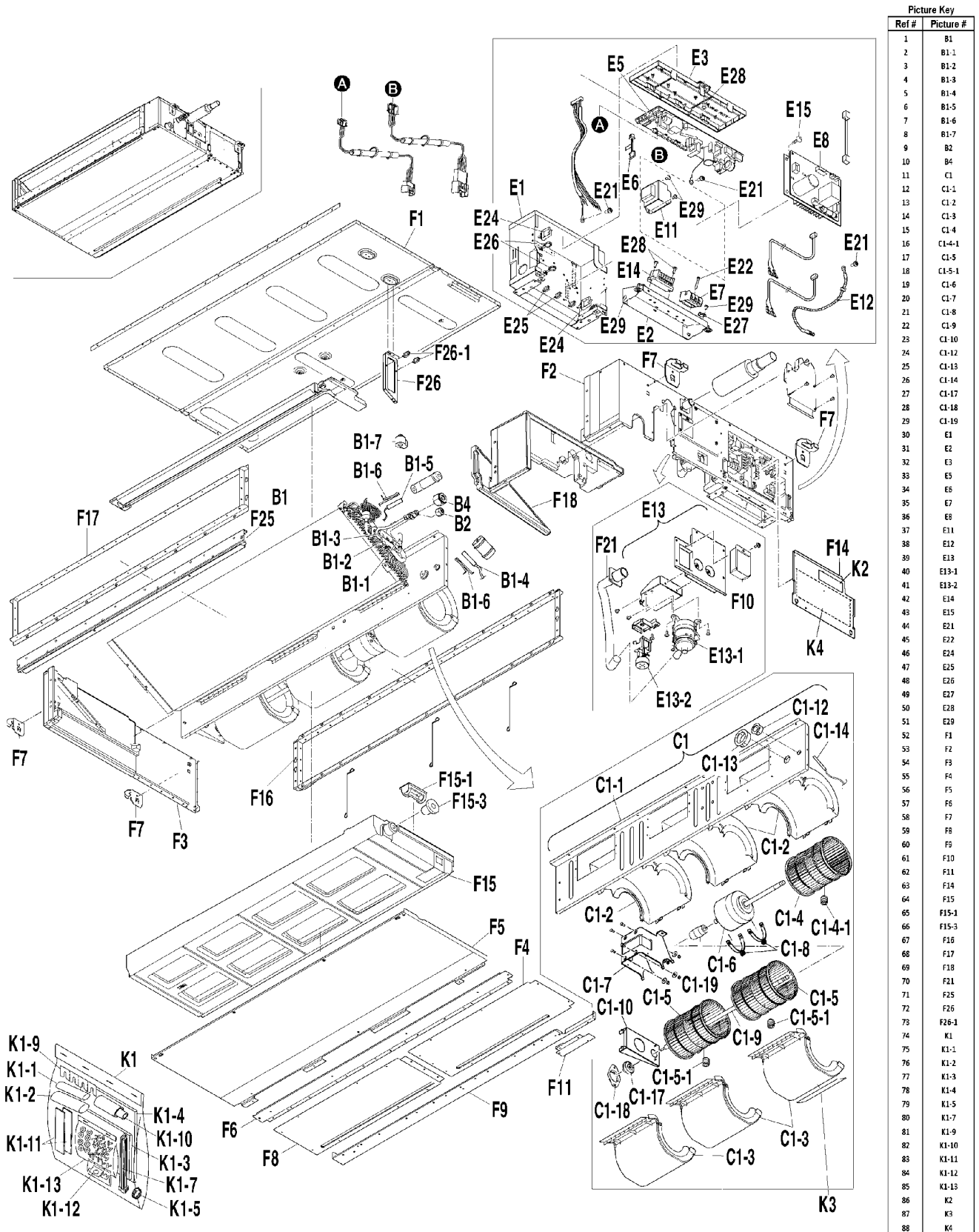
Ref. Part No:	Ref. Part No:	Description:	Description:
Image 1:		Image 1:	
1	2425333	BODY/ ELECTRONIC EXP. VALVE (M6)	51 2546603 SIDE PLATE (LEFT) (M6)
1	4015741	COIL/ ELECTRONIC EXP. VALVE (M6)	51 2261135 SIDE PLATE (RIGHT) (M6)
1	119848J	FLARE NUT (M6)	51 2261630 TOP PLATE ASSY. (M6)
1	2546619	HEAT EXCHANGER ASSY. (M6)	51 109688J TRUSS HEAD TAPPING SCREW (M6)
1	2141659	REFRIGERANT FILTER (M6)	61 2261685 AIR INLET FLANGE ASSY. (M6)
1	2141666	REFRIGERANT FILTER (M6)	61 2261692 AIR OUTLET FLANGE ASSY. (M6)
1	007432J	RETAINER/ THERMISTOR CLAMP (M6)	61 1985421 ANTI-BACTERIAL AGENTS ASSY. (M6)
1	2398664	THERMISTOR ASSY. (COIL) (M6)	61 4015767 BOTTOM PLATE (4) (M6)
1	2414528	THERMISTOR ASSY. (COIL) (M6)	61 537994 CAP/ DRAIN SOCKET (M6)
11	2550990	FAN HOUSING (LOWER) (M6)	61 2261205 COVER/ INSPECTION HATCH (M6)
11	2550989	FAN HOUSING (UPPER) (M6)	61 2261229 COVER/ SWITCH BOX (M6)
11	2261609	FAN TOP PLATE ASSY. (M6)	61 2261281 DRAIN HOSE ASSY. (M6)
11	119850J	FLARE NUT (M6)	61 2546617 DRAIN PAN ASSY. (M6)
11	011582J	HEX SOCKET SCREW (M6)	61 2550991 THERMAL INSULATION (PARTITION) (M6)
11	011582J	HEX SOCKET SCREW (M6)	71 NA ACCESSORIES ASSY. (1) (M6)
11	2550996	MOTOR (INDOOR FAN) (M6)	71 4017148 FRONT STAY ASSY. (M6)
11	2550994	SIROCCO FAN ASSY. (M6)	71 2533760 HOSE BAND (M6)
11	1863716	SIROCCO ROTOR ASSY. (M6)	71 4016379 MOUNTING PLATE (M6)
11	2261616	SIROCCO ROTOR ASSY. (M6)	71 032284J SEALER/ DRAIN HOSE (M6)
21	144573J	BUSHING (M6)	71 4000023 SEALING MATERIAL (M6)
21	170618J	BUSHING (LOW VOLTAGE) (M6)	71 038187J THERMAL INSULATION TUBE (M6)
21	019928J	COUPLING RUBBER (M6)	71 2544361 THERMAL INSULATION TUBE (M6)
21	1876279	FAN BEARING PLATE (M6)	71 980773 TIE WRAP (M6)
21	2456166	FAN BEARING VIBRATION ABSORBER (M6)	71 027843J WIRE CLIP (M6)
21	2270386	FAN SHAFT ASSY. (M6)	81 2546670 CAUTION LABEL (ELECTRIC SHOCK) (M6)
21	4007850	LOCK PLATE/ FAN MOTOR (M6)	81 4023075 CAUTION LABEL (ROTATING) (M6)
21	4015746	MOTOR BASE (M6)	81 2393001 CONDUIT MOUNTING PLATE (M6)
21	443026J	MOUNTING PLATE/ FAN BEARING (M6)	81 2455745 DRAIN HOSE (M6)
21	2398671	THERMISTOR ASSY. (AIR) (M6)	81 2261298 SEALING MATERIAL (M6)
31	065338J	CAPACITY SETTING ADAPTOR (M6)	81 2550995 TRUSS HEAD TAPPING SCREW PACK (M6)
31	2261072	EARTH WIRE (M6)	81 1755334 WASHER FIXING MATERIAL (M6)
31	2548334	PRINTED CIRCUIT BOARD ASSY. (CONTROL) (M6)	81 2550997 WIRING DIAGRAM LABEL (M6)
31	2548335	PRINTED CIRCUIT BOARD ASSY. (FAN) (M6)	
31	2397940	REACTOR (M6)	
31	2374675	RESIN CASE (M6)	
31	2374668	SET PLATE/ IMPLEMENT USE (4) (M6)	
31	4016363	SWITCH BOX ASSY. (M6)	
31	2395519	TERMINAL BLOCK (M6)	
31	042425J	TRUSS HEAD TAPPING SCREW (M6)	
41	2534708	FLOAT SWITCH ASSY. (M6)	
41	1855164	HARNESS LIFTER (M6)	
41	2261089	MOTOR (DRAIN PUMP) (M6)	
41	174888J	PAN HEAD TAPPING SCREW (M6)	
41	0816755	RESIN CLAMP (M6)	
41	4015731	SERVICE LID ASSY. (M6)	
41	113783J	TAPPING SCREW (M6)	
41	2002033	TERMINAL BLOCK (REMOTE CONTROLLER) (M6)	
41	027843J	WIRE CLIP (M6)	
41	352004	WIRE CLIP (M6)	
51	2261678	BOTTOM FRAME (M6)	
51	2261654	BOTTOM PLATE (M6)	
51	2261661	BOTTOM PLATE (3) (M6)	
51	2261647	CHAMBER COVER (M6)	
51	121072J	CROSS-RECESSED TAPPING SCREW (M6)	
51	2261180	HOOK (M6)	

Expanded Model Nomenclature

M1 - FXMQ15TBVJU
M2 - FXMQ18TBVJU
M3 - FXMQ24TBVJU
M4 - FXMQ30TBVJU
M5 - FXMQ36TBVJU
M6 - FXMQ48TBVJU
M7 - FXMQ54TBVJU

FXMQ54TBVJU

FXMQ54TBVJU



Picture Key

Ref #	Picture #
1	B1
2	B1-1
3	B1-2
4	B1-3
5	B1-4
6	B1-5
7	B1-6
8	B1-7
9	B2
10	B4
11	C1
12	C1-1
13	C1-2
14	C1-3
15	C1-4
16	C1-4-1
17	C1-5
18	C1-5-1
19	C1-6
20	C1-7
21	C1-8
22	C1-9
23	C1-10
24	C1-12
25	C1-13
26	C1-14
27	C1-17
28	C1-18
29	C1-19
30	E1
31	E2
32	E3
33	E5
34	E6
35	E7
36	E8
37	E11
38	E12
39	E13
40	E13-1
41	E13-2
42	E14
43	E15
44	E21
45	E22
46	E24
47	E25
48	E26
49	E27
50	E28
51	E29
52	F1
53	F2
54	F3
55	F4
56	F5
57	F6
58	F7
59	F8
60	F9
61	F10
62	F11
63	F13
64	F14
65	F15-1
66	F15-3
67	F16
68	F17
69	F18
70	F21
71	F25
72	F26
73	F26-1
74	K1
75	K1-1
76	K1-2
77	K1-3
78	K1-4
79	K1-5
80	K1-7
81	K1-9
82	K1-10
83	K1-11
84	K1-12
85	K1-13
86	K2
87	K3
88	K4

FXMQ54TBVJU

Ref. Part No:	Part No:	Description:	Ref. Part No:	Part No:	Description:							
Image 1:			Image 1:									
1	2425340	BODY/ ELECTRONIC EXP. VALVE (M7)	51	2546603	SIDE PLATE (LEFT) (M7)							
1	4015741	COIL/ ELECTRONIC EXP. VALVE (M7)	51	2261135	SIDE PLATE (RIGHT) (M7)							
1	119848J	FLARE NUT (M7)	51	4016367	TOP PLATE ASSY. (M7)							
1	2546620	HEAT EXCHANGER ASSY. (M7)	51	109688J	TRUSS HEAD TAPPING SCREW (M7)							
1	2141659	REFRIGERANT FILTER (M7)	61	4016374	AIR INLET FLANGE ASSY. (M7)							
1	2141666	REFRIGERANT FILTER (M7)	61	4016375	AIR OUTLET FLANGE ASSY. (M7)							
1	007432J	RETAINER/ THERMISTOR CLAMP (M7)	61	1985421	ANTI-BACTERIAL AGENTS ASSY. (M7)							
1	2398664	THERMISTOR ASSY. (COIL) (M7)	61	4016372	BOTTOM FRAME ASSY. (M7)							
1	2414528	THERMISTOR ASSY. (COIL) (M7)	61	4015767	BOTTOM PLATE (4) (M7)							
11	2550990	FAN HOUSING (LOWER) (M7)	61	537994	CAP/ DRAIN SOCKET (M7)							
11	2550989	FAN HOUSING (UPPER) (M7)	61	2261205	COVER/ INSPECTION HATCH (M7)							
11	4016360	FAN TOP PLATE ASSY. (M7)	61	2261229	COVER/ SWITCH BOX (M7)							
11	119850J	FLARE NUT (M7)	61	2546621	DRAIN PAN ASSY. (M7)							
11	011582J	HEX SOCKET SCREW (M7)	61	2550991	THERMAL INSULATION (PARTITION) (M7)							
11	011582J	HEX SOCKET SCREW (M7)	71	NA	ACCESSORIES ASSY. (1) (M7)							
11	2459057	MOTOR (INDOOR FAN) (M7)	71	2261281	DRAIN HOSE ASSY. (M7)							
11	2550998	SIROCCO FAN ASSY. (M7)	71	4016378	FRONT STAY ASSY. (M7)							
11	1863716	SIROCCO ROTOR ASSY. (M7)	71	2533760	HOSE BAND (M7)							
11	2261616	SIROCCO ROTOR ASSY. (M7)	71	4016379	MOUNTING PLATE (M7)							
21	144573J	BUSHING (M7)	71	032284J	SEALER/ DRAIN HOSE (M7)							
21	170618J	BUSHING (LOW VOLTAGE) (M7)	71	4000023	SEALING MATERIAL (M7)							
21	019928J	COUPLING RUBBER (M7)	71	038187J	THERMAL INSULATION TUBE (M7)							
21	1876279	FAN BEARING PLATE (M7)	71	2544361	THERMAL INSULATION TUBE (M7)							
21	2456166	FAN BEARING VIBRATION ABSORBER (M7)	71	027843J	WIRE CLIP (M7)							
21	4016362	FAN SHAFT ASSY. (M7)	81	2546670	CAUTION LABEL (ELECTRIC SHOCK) (M7)							
21	4007850	LOCK PLATE/ FAN MOTOR (M7)	81	4023075	CAUTION LABEL (ROTATING) (M7)							
21	4015746	MOTOR BASE (M7)	81	2393001	CONDUIT MOUNTING PLATE (M7)							
21	443026J	MOUNTING PLATE/ FAN BEARING (M7)	81	2455745	DRAIN HOSE (M7)							
21	2398671	THERMISTOR ASSY. (AIR) (M7)	81	2261298	SEALING MATERIAL (M7)							
31	065339J	CAPACITY SETTING ADAPTOR (M7)	81	980773	TIE WRAP (M7)							
31	2261072	EARTH WIRE (M7)	81	2550999	TRUSS HEAD TAPPING SCREW PACK (M7)							
31	2548334	PRINTED CIRCUIT BOARD ASSY. (CONTROL) (M7)	81	1755334	WASHER FIXING MATERIAL (M7)							
31	2548408	PRINTED CIRCUIT BOARD ASSY. (FAN) (M7)	81	2550997	WIRING DIAGRAM LABEL (M7)							
31	2397940	REACTOR (M7)	Expanded Model Nomenclature									
31	2374675	RESIN CASE (M7)	<table border="1"> <tr> <td>M1 - FXMQ15TBVJU</td> </tr> <tr> <td>M2 - FXMQ18TBVJU</td> </tr> <tr> <td>M3 - FXMQ24TBVJU</td> </tr> <tr> <td>M4 - FXMQ30TBVJU</td> </tr> <tr> <td>M5 - FXMQ36TBVJU</td> </tr> <tr> <td>M6 - FXMQ48TBVJU</td> </tr> <tr> <td>M7 - FXMQ54TBVJU</td> </tr> </table>			M1 - FXMQ15TBVJU	M2 - FXMQ18TBVJU	M3 - FXMQ24TBVJU	M4 - FXMQ30TBVJU	M5 - FXMQ36TBVJU	M6 - FXMQ48TBVJU	M7 - FXMQ54TBVJU
M1 - FXMQ15TBVJU												
M2 - FXMQ18TBVJU												
M3 - FXMQ24TBVJU												
M4 - FXMQ30TBVJU												
M5 - FXMQ36TBVJU												
M6 - FXMQ48TBVJU												
M7 - FXMQ54TBVJU												
31	4015731	SERVICE LID ASSY. (M7)										
31	2374668	SET PLATE/ IMPLEMENT USE (4) (M7)										
31	4016363	SWITCH BOX ASSY. (M7)										
31	2395519	TERMINAL BLOCK (M7)										
41	2534708	FLOAT SWITCH ASSY. (M7)										
41	1855164	HARNESS LIFTER (M7)										
41	2261089	MOTOR (DRAIN PUMP) (M7)										
41	174888J	PAN HEAD TAPPING SCREW (M7)										
41	0816755	RESIN CLAMP (M7)										
41	113783J	TAPPING SCREW (M7)										
41	2002033	TERMINAL BLOCK (REMOTE CONTROLLER) (M7)										
41	042425J	TRUSS HEAD TAPPING SCREW (M7)										
41	027843J	WIRE CLIP (M7)										
41	352004	WIRE CLIP (M7)										
51	4016369	BOTTOM PLATE (M7)										
51	4016370	BOTTOM PLATE (3) (M7)										
51	4016368	CHAMBER COVER (1) (M7)										
51	4016371	CHAMBER COVER (2) (M7)										
51	121072J	CROSS-RECESSED TAPPING SCREW (M7)										
51	2261180	HOOK (M7)										